



# Full wwPDB X-ray Structure Validation Report ⓘ

Mar 10, 2026 – 01:56 AM UTC

PDB ID : 1VIK / pdb\_00001vik  
Title : HIV-1 PROTEASE COMPLEXED WITH THE INHIBITOR HOE/BAY 793  
ORTHORHOMBIC FORM  
Authors : Lange-Savage, G.; Berchtold, H.; Liesum, A.; Hilgenfeld, R.  
Deposited on : 1997-05-07  
Resolution : 2.40 Å(reported)

This is a Full wwPDB X-ray Structure Validation Report for a publicly released PDB entry.

We welcome your comments at [validation@mail.wwpdb.org](mailto:validation@mail.wwpdb.org)

A user guide is available at

<https://www.wwpdb.org/validation/2017/XrayValidationReportHelp>

with specific help available everywhere you see the ⓘ symbol.

The types of validation reports are described at

<http://www.wwpdb.org/validation/2017/FAQs#types>.

---

The following versions of software and data (see [references ⓘ](#)) were used in the production of this report:

MolProbity : 4-5-2 with Phenix2.0  
Mogul : 2022.3.0, CSD as543be (2022)  
Xtrriage (Phenix) : **NOT EXECUTED**  
EDS : **NOT EXECUTED**  
Buster-report : wwPDB partial adaption of 1.1.7 (2018)  
Percentile statistics : 20250101.v01 (using entries in the PDB archive January 1st 2025)  
Ideal geometry (proteins) : Engh & Huber (2001)  
Ideal geometry (DNA, RNA) : Parkinson et al. (1996)  
Validation Pipeline (wwPDB-VP) : 2.49

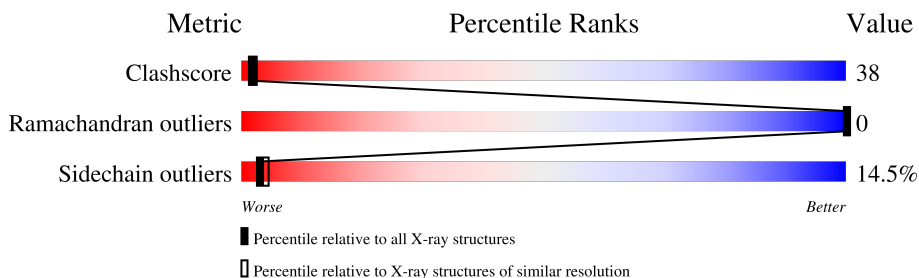
# 1 Overall quality at a glance i

The following experimental techniques were used to determine the structure:

*X-RAY DIFFRACTION*

The reported resolution of this entry is 2.40 Å.

Percentile scores (ranging between 0-100) for global validation metrics of the entry are shown in the following graphic. The table shows the number of entries on which the scores are based.



Metric	Whole archive (#Entries)	Similar resolution (#Entries, resolution range(Å))
Clashscore	190562	5391 (2.40-2.40)
Ramachandran outliers	187476	5320 (2.40-2.40)
Sidechain outliers	187428	5321 (2.40-2.40)

The table below summarises the geometric issues observed across the polymeric chains and their fit to the electron density. The red, orange, yellow and green segments of the lower bar indicate the fraction of residues that contain outliers for  $\geq 3$ , 2, 1 and 0 types of geometric quality criteria respectively. A grey segment represents the fraction of residues that are not modelled. The numeric value for each fraction is indicated below the corresponding segment, with a dot representing fractions  $\leq 5\%$ .

Note EDS was not executed.

Mol	Chain	Length	Quality of chain
1	A	99	
1	B	99	

## 2 Entry composition [i](#)

There are 3 unique types of molecules in this entry. The entry contains 1733 atoms, of which 0 are hydrogens and 0 are deuteriums.

In the tables below, the ZeroOcc column contains the number of atoms modelled with zero occupancy, the AltConf column contains the number of residues with at least one atom in alternate conformation and the Trace column contains the number of residues modelled with at most 2 atoms.

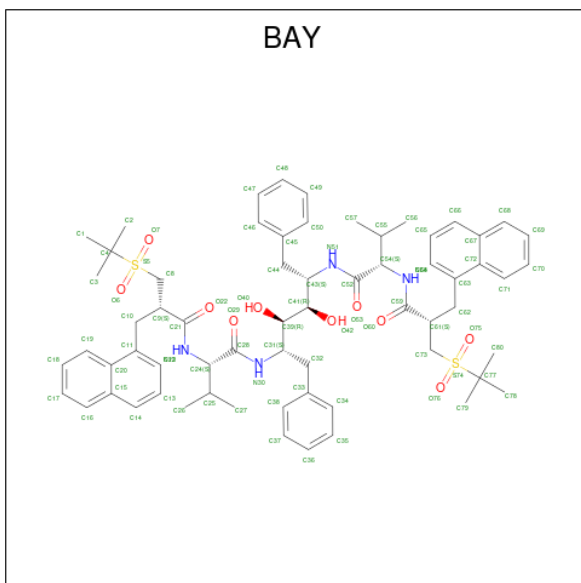
- Molecule 1 is a protein called HIV-1 PROTEASE.

Mol	Chain	Residues	Atoms					ZeroOcc	AltConf	Trace
			Total	C	N	O	S			
1	A	99	Total 760	490	131	135	4	0	0	0
1	B	99	Total 760	490	131	135	4	0	0	0

There are 2 discrepancies between the modelled and reference sequences:

Chain	Residue	Modelled	Actual	Comment	Reference
A	41	ARG	LYS	conflict	UNP P12499
B	41	ARG	LYS	conflict	UNP P12499

- Molecule 2 is N-(1-BENZYL-2,3-DIHYDROXY-4-{3-METHYL-2-[2-(2-METHYL-PROPANE-2-SULFONYLMETHYL)-3-NAPHTHALEN-1-YL-PROPIONYLAMINO]-BUTYRYLAMINO}-5-PHENYL-PENTYL)-3-METHYL-2-[2-(2-METHYL-PROPANE-2-SULFONYLMETHYL)-3-NAPHTHALEN-1-YL-PROPIONYLAMINO]-BUTYRAMIDE (CCD ID: BAY) (formula: C<sub>64</sub>H<sub>82</sub>N<sub>4</sub>O<sub>10</sub>S<sub>2</sub>).



Mol	Chain	Residues	Atoms					ZeroOcc	AltConf
			Total	C	N	O	S		
2	B	1	80	64	4	10	2	0	0

- Molecule 3 is water.

Mol	Chain	Residues	Atoms		ZeroOcc	AltConf
3	A	80	Total	O	0	0
			80	80		
3	B	53	Total	O	0	0
			53	53		

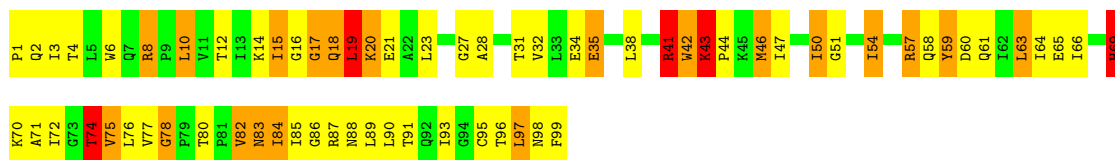
### 3 Residue-property plots [i](#)

These plots are drawn for all protein, RNA, DNA and oligosaccharide chains in the entry. The first graphic for a chain summarises the proportions of the various outlier classes displayed in the second graphic. The second graphic shows the sequence view annotated by issues in geometry. Residues are color-coded according to the number of geometric quality criteria for which they contain at least one outlier: green = 0, yellow = 1, orange = 2 and red = 3 or more. Stretches of 2 or more consecutive residues without any outlier are shown as a green connector. Residues present in the sample, but not in the model, are shown in grey.

Note EDS was not executed.

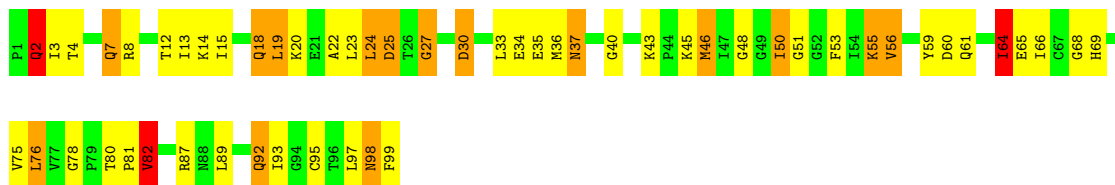
- Molecule 1: HIV-1 PROTEASE

Chain A: 



- Molecule 1: HIV-1 PROTEASE

Chain B: 



## 4 Data and refinement statistics

Xtriage (Phenix) and EDS were not executed - this section is therefore incomplete.

Property	Value	Source
Space group	P 21 21 2	Depositor
Cell constants a, b, c, $\alpha$ , $\beta$ , $\gamma$	58.16Å 86.97Å 47.20Å 90.00° 90.00° 90.00°	Depositor
Resolution (Å)	8.00 – 2.40	Depositor
% Data completeness (in resolution range)	(Not available) (8.00-2.40)	Depositor
$R_{merge}$	(Not available)	Depositor
$R_{sym}$	(Not available)	Depositor
Refinement program	PROLSQ	Depositor
R, $R_{free}$	0.178 , (Not available)	Depositor
Estimated twinning fraction	No twinning to report.	Xtriage
Total number of atoms	1733	wwPDB-VP
Average B, all atoms (Å <sup>2</sup> )	14.0	wwPDB-VP

## 5 Model quality i

### 5.1 Standard geometry i

Bond lengths and bond angles in the following residue types are not validated in this section: BAY

The Z score for a bond length (or angle) is the number of standard deviations the observed value is removed from the expected value. A bond length (or angle) with  $|Z| > 5$  is considered an outlier worth inspection. RMSZ is the root-mean-square of all Z scores of the bond lengths (or angles).

Mol	Chain	Bond lengths		Bond angles	
		RMSZ	# Z  >5	RMSZ	# Z  >5
1	A	1.09	0/773	2.18	42/1046 (4.0%)
1	B	1.11	0/773	2.30	37/1046 (3.5%)
All	All	1.10	0/1546	2.24	79/2092 (3.8%)

There are no bond length outliers.

All (79) bond angle outliers are listed below:

Mol	Chain	Res	Type	Atoms	Z	Observed(°)	Ideal(°)
1	B	87	ARG	CD-NE-CZ	18.11	149.75	124.40
1	B	40	GLY	N-CA-C	12.03	128.96	111.76
1	B	37	ASN	CA-CB-CG	-8.37	104.23	112.60
1	B	82	VAL	CB-CA-C	-8.32	100.24	111.80
1	A	75	VAL	CA-C-O	-7.93	112.15	120.64
1	A	57	ARG	NE-CZ-NH1	-7.91	113.59	121.50
1	B	37	ASN	OD1-CG-ND2	7.64	130.24	122.60
1	A	93	ILE	O-C-N	7.52	128.86	122.09
1	B	19	LEU	CA-C-O	-7.50	112.25	120.43
1	A	41	ARG	N-CA-CB	7.36	122.41	110.41
1	A	63	LEU	CA-C-O	-7.08	112.72	120.43
1	A	57	ARG	CD-NE-CZ	-7.00	114.60	124.40
1	A	43	LYS	O-C-N	6.95	128.20	121.66
1	B	55	LYS	O-C-N	6.95	131.49	123.29
1	B	78	GLY	O-C-N	6.74	128.51	121.77
1	B	25	ASP	N-CA-C	6.72	120.86	107.62
1	B	2	GLN	CA-C-O	-6.69	113.11	120.33
1	A	84	ILE	N-CA-CB	-6.65	102.24	111.41
1	B	56	VAL	CA-C-O	-6.56	112.58	120.78
1	A	69	HIS	CA-C-N	6.56	131.44	122.19
1	A	69	HIS	C-N-CA	6.56	131.44	122.19
1	A	27	GLY	N-CA-C	-6.51	106.59	114.66

*Continued on next page...*

*Continued from previous page...*

Mol	Chain	Res	Type	Atoms	Z	Observed(°)	Ideal(°)
1	B	60	ASP	CA-CB-CG	-6.48	106.12	112.60
1	A	57	ARG	NH1-CZ-NH2	6.45	127.69	119.30
1	B	76	LEU	CA-C-O	-6.39	113.89	121.11
1	A	8	ARG	CA-C-O	-6.34	113.79	119.75
1	B	24	LEU	CA-C-O	6.33	127.75	120.60
1	A	38	LEU	O-C-N	6.24	126.82	121.20
1	B	22	ALA	CA-C-N	6.22	131.76	123.05
1	B	22	ALA	C-N-CA	6.22	131.76	123.05
1	A	85	ILE	CA-C-O	-6.17	113.87	120.59
1	A	8	ARG	O-C-N	6.11	126.74	121.30
1	A	12	THR	CA-C-O	-6.07	113.81	120.43
1	A	35	GLU	N-CA-C	6.00	119.19	110.42
1	A	42	TRP	CA-C-O	-5.98	114.35	121.11
1	B	35	GLU	CA-C-O	-5.97	114.46	120.96
1	A	6	TRP	N-CA-C	-5.96	104.72	112.23
1	A	28	ALA	N-CA-C	5.92	118.37	108.96
1	B	92	GLN	OE1-CD-NE2	5.91	128.51	122.60
1	A	19	LEU	CA-C-N	5.84	130.97	121.74
1	A	19	LEU	C-N-CA	5.84	130.97	121.74
1	A	46	MET	N-CA-CB	-5.80	102.03	110.84
1	A	44	PRO	CA-C-N	5.79	131.59	122.21
1	A	44	PRO	C-N-CA	5.79	131.59	122.21
1	A	17	GLY	CA-C-N	5.78	130.99	121.86
1	A	17	GLY	C-N-CA	5.78	130.99	121.86
1	A	59	TYR	CA-C-O	-5.73	114.64	121.11
1	B	61	GLN	CA-C-N	5.73	129.76	122.37
1	B	61	GLN	C-N-CA	5.73	129.76	122.37
1	B	8	ARG	NE-CZ-NH1	-5.71	115.78	121.50
1	B	37	ASN	CB-CG-ND2	-5.69	107.86	116.40
1	A	12	THR	O-C-N	5.66	129.67	123.27
1	B	35	GLU	O-C-N	5.62	129.81	123.06
1	A	74	THR	N-CA-C	-5.54	102.28	110.48
1	B	19	LEU	CB-CA-C	-5.53	100.62	109.75
1	A	41	ARG	CA-CB-CG	5.52	125.13	114.10
1	B	19	LEU	O-C-N	5.43	129.41	123.27
1	B	27	GLY	CA-C-N	5.40	130.61	123.05
1	B	27	GLY	C-N-CA	5.40	130.61	123.05
1	A	18	GLN	CA-C-N	-5.39	114.77	123.23
1	A	18	GLN	C-N-CA	-5.39	114.77	123.23
1	B	23	LEU	CA-C-O	-5.38	114.40	120.32
1	B	87	ARG	NE-CZ-NH1	5.38	126.88	121.50
1	B	18	GLN	OE1-CD-NE2	5.34	127.94	122.60

*Continued on next page...*

Continued from previous page...

Mol	Chain	Res	Type	Atoms	Z	Observed(°)	Ideal(°)
1	B	55	LYS	CA-C-O	-5.32	114.58	120.38
1	A	10	LEU	CA-C-O	-5.30	115.00	121.05
1	A	78	GLY	O-C-N	5.26	127.03	121.77
1	B	8	ARG	O-C-N	5.20	125.64	121.38
1	B	30	ASP	CA-CB-CG	5.17	117.77	112.60
1	A	83	ASN	OD1-CG-ND2	5.15	127.75	122.60
1	B	92	GLN	N-CA-C	5.14	117.27	111.11
1	A	93	ILE	N-CA-C	-5.12	107.48	112.29
1	B	64	ILE	CA-C-N	-5.10	115.98	122.77
1	B	64	ILE	C-N-CA	-5.10	115.98	122.77
1	A	97	LEU	O-C-N	-5.06	117.45	123.22
1	A	41	ARG	N-CA-C	-5.03	102.32	110.32
1	A	75	VAL	N-CA-C	-5.03	101.38	108.27
1	A	19	LEU	N-CA-C	5.01	117.53	107.41
1	B	98	ASN	CA-C-O	5.01	126.11	120.70

There are no chirality outliers.

There are no planarity outliers.

## 5.2 Too-close contacts [\(i\)](#)

In the following table, the Non-H and H(model) columns list the number of non-hydrogen atoms and hydrogen atoms in the chain respectively. The H(added) column lists the number of hydrogen atoms added and optimized by MolProbity. The Clashes column lists the number of clashes within the asymmetric unit, whereas Symm-Clashes lists symmetry-related clashes.

Mol	Chain	Non-H	H(model)	H(added)	Clashes	Symm-Clashes
1	A	760	0	807	78	0
1	B	760	0	807	60	0
2	B	80	0	82	17	0
3	A	80	0	0	13	0
3	B	53	0	0	4	0
All	All	1733	0	1696	126	0

The all-atom clashscore is defined as the number of clashes found per 1000 atoms (including hydrogen atoms). The all-atom clashscore for this structure is 38.

All (126) close contacts within the same asymmetric unit are listed below, sorted by their clash magnitude.

Atom-1	Atom-2	Interatomic distance (Å)	Clash overlap (Å)
1:B:37:ASN:HB2	3:B:243:HOH:O	1.20	1.26
1:A:41:ARG:NH1	3:A:136:HOH:O	1.80	1.12
1:B:7:GLN:HB3	3:B:221:HOH:O	1.48	1.10
1:A:98:ASN:ND2	1:B:2:GLN:HG2	1.75	0.99
1:A:21:GLU:HG3	3:A:124:HOH:O	1.63	0.98
2:B:201:BAY:H61	2:B:201:BAY:H71	1.49	0.94
1:A:98:ASN:HD21	1:B:2:GLN:CG	1.83	0.92
1:B:37:ASN:N	1:B:37:ASN:HD22	1.69	0.90
1:A:19:LEU:O	1:A:19:LEU:HD23	1.77	0.84
1:B:48:GLY:C	2:B:201:BAY:H70	2.06	0.80
1:B:82:VAL:HG13	2:B:201:BAY:H17	1.63	0.79
1:A:14:LYS:HD2	3:A:131:HOH:O	1.82	0.78
1:B:15:ILE:O	1:B:18:GLN:HB2	1.84	0.77
1:B:82:VAL:CG1	2:B:201:BAY:H17	2.14	0.77
2:B:201:BAY:H49	2:B:201:BAY:H621	1.67	0.77
1:B:20:LYS:HE3	1:B:36:MET:HE1	1.66	0.76
2:B:201:BAY:H61	2:B:201:BAY:C71	2.15	0.76
1:A:64:ILE:HG22	1:A:65:GLU:N	2.03	0.74
1:A:71:ALA:C	1:A:72:ILE:HD12	2.13	0.74
1:A:1:PRO:HG2	1:A:3:ILE:HD11	1.69	0.73
1:A:95:CYS:SG	1:B:97:LEU:HD22	2.29	0.72
2:B:201:BAY:H71	2:B:201:BAY:C61	2.17	0.72
1:A:97:LEU:HG	1:B:95:CYS:SG	2.30	0.72
1:A:98:ASN:ND2	1:B:2:GLN:CG	2.45	0.71
1:A:51:GLY:C	1:B:51:GLY:HA3	2.14	0.71
1:A:34:GLU:HG3	1:A:83:ASN:OD1	1.93	0.69
1:B:69:HIS:HB3	1:B:93:ILE:HG22	1.76	0.67
1:A:2:GLN:OE1	3:A:129:HOH:O	2.13	0.67
1:A:3:ILE:HD12	1:A:3:ILE:N	2.11	0.65
1:A:54:ILE:HG12	1:B:50:ILE:HG23	1.78	0.65
1:B:36:MET:C	1:B:37:ASN:HD22	2.03	0.65
2:B:201:BAY:H621	2:B:201:BAY:C49	2.26	0.65
1:A:97:LEU:HD23	1:B:24:LEU:HD12	1.79	0.65
1:B:46:MET:HE3	1:B:55:LYS:HG3	1.80	0.64
1:B:37:ASN:N	1:B:37:ASN:ND2	2.44	0.63
1:A:70:LYS:HE2	1:A:70:LYS:N	2.14	0.62
1:B:14:LYS:HA	1:B:18:GLN:O	2.00	0.62
1:A:47:ILE:HD11	1:A:54:ILE:HD11	1.81	0.62
1:A:50:ILE:HD13	2:B:201:BAY:H35	1.81	0.62
1:A:31:THR:HG23	1:A:84:ILE:O	2.00	0.61
1:A:42:TRP:HA	1:A:58:GLN:O	2.01	0.61
1:A:98:ASN:CG	1:B:2:GLN:HG2	2.26	0.61

*Continued on next page...*

*Continued from previous page...*

Atom-1	Atom-2	Interatomic distance (Å)	Clash overlap (Å)
1:A:70:LYS:HE2	1:A:70:LYS:H	1.66	0.60
1:B:20:LYS:HE3	1:B:36:MET:CE	2.32	0.60
1:B:30:ASP:HB2	3:B:203:HOH:O	2.02	0.59
1:B:56:VAL:HG21	1:B:76:LEU:HB3	1.85	0.59
1:A:64:ILE:HG22	1:A:65:GLU:H	1.68	0.59
1:A:16:GLY:O	1:A:17:GLY:C	2.46	0.58
1:A:64:ILE:CG2	1:A:65:GLU:N	2.68	0.57
1:A:80:THR:OG1	1:A:82:VAL:O	2.21	0.57
1:A:1:PRO:HD2	1:B:99:PHE:CZ	2.40	0.56
1:A:98:ASN:HD21	1:B:2:GLN:HG3	1.69	0.56
2:B:201:BAY:C71	2:B:201:BAY:C61	2.78	0.56
1:A:87:ARG:O	1:A:91:THR:HG23	2.07	0.54
1:B:33:LEU:CD1	1:B:75:VAL:HG11	2.36	0.54
1:B:36:MET:HE2	3:B:215:HOH:O	2.06	0.54
2:B:201:BAY:H49	2:B:201:BAY:C62	2.37	0.54
1:A:1:PRO:HD2	1:B:99:PHE:CE2	2.42	0.54
1:A:8:ARG:HB2	1:A:10:LEU:HD12	1.91	0.53
1:A:20:LYS:HE2	3:A:117:HOH:O	2.09	0.53
1:B:14:LYS:HG3	1:B:19:LEU:HD23	1.89	0.53
1:A:72:ILE:HD12	1:A:72:ILE:N	2.24	0.53
1:A:96:THR:HG22	1:B:4:THR:HA	1.90	0.52
1:B:13:ILE:HG22	1:B:66:ILE:HG23	1.90	0.52
1:B:14:LYS:CG	1:B:19:LEU:HD23	2.40	0.52
1:B:33:LEU:HG	1:B:75:VAL:HG13	1.91	0.51
1:A:63:LEU:HD12	1:A:71:ALA:O	2.11	0.51
1:B:82:VAL:HG11	2:B:201:BAY:H17	1.91	0.51
1:A:35:GLU:CA	1:A:35:GLU:OE1	2.56	0.50
1:B:33:LEU:HG	1:B:75:VAL:CG1	2.40	0.50
1:B:65:GLU:OE2	1:B:68:GLY:HA2	2.10	0.50
1:A:74:THR:C	1:A:75:VAL:HG23	2.36	0.50
1:A:15:ILE:O	1:A:16:GLY:C	2.55	0.50
1:A:98:ASN:ND2	3:A:145:HOH:O	2.45	0.49
1:A:95:CYS:HA	1:B:98:ASN:O	2.12	0.49
1:A:95:CYS:HA	1:B:99:PHE:HB3	1.95	0.49
1:A:64:ILE:CG2	1:A:65:GLU:H	2.25	0.49
3:A:145:HOH:O	1:B:2:GLN:HG3	2.12	0.49
1:B:20:LYS:CE	1:B:36:MET:HE1	2.39	0.48
1:A:41:ARG:HB3	3:A:136:HOH:O	2.12	0.48
2:B:201:BAY:H12	2:B:201:BAY:C8	2.43	0.47
1:A:43:LYS:HG2	3:A:160:HOH:O	2.14	0.47
1:A:51:GLY:O	1:B:51:GLY:HA3	2.15	0.47

*Continued on next page...*

*Continued from previous page...*

Atom-1	Atom-2	Interatomic distance (Å)	Clash overlap (Å)
1:B:81:PRO:HB2	2:B:201:BAY:H16	1.97	0.47
1:A:96:THR:CG2	1:B:4:THR:HG22	2.45	0.47
1:A:64:ILE:HD13	1:A:64:ILE:HG21	1.45	0.46
1:A:43:LYS:HB2	1:A:43:LYS:HE3	1.49	0.46
1:A:41:ARG:NH1	3:A:115:HOH:O	2.40	0.46
1:A:69:HIS:HB3	3:A:178:HOH:O	2.14	0.46
1:A:14:LYS:HB3	1:A:65:GLU:HB3	1.98	0.46
1:A:98:ASN:HB2	1:B:98:ASN:ND2	2.31	0.46
1:A:35:GLU:OE1	1:A:35:GLU:HA	2.16	0.45
1:A:46:MET:HE3	1:A:54:ILE:C	2.41	0.45
1:B:15:ILE:O	1:B:18:GLN:NE2	2.49	0.45
1:A:3:ILE:N	1:A:3:ILE:CD1	2.80	0.45
1:A:66:ILE:N	1:A:66:ILE:HD12	2.33	0.44
1:B:25:ASP:OD1	1:B:25:ASP:C	2.59	0.44
2:B:201:BAY:O53	2:B:201:BAY:H563	2.17	0.44
1:A:69:HIS:ND1	1:A:69:HIS:N	2.58	0.44
1:A:99:PHE:HE1	1:B:3:ILE:CD1	2.31	0.44
2:B:201:BAY:H49	2:B:201:BAY:C63	2.47	0.44
1:A:50:ILE:HD13	1:A:50:ILE:HA	1.82	0.43
1:A:86:GLY:O	1:A:90:LEU:HG	2.18	0.43
1:A:41:ARG:NH1	1:A:41:ARG:HB3	2.34	0.43
1:A:60:ASP:O	1:A:61:GLN:C	2.61	0.43
1:A:71:ALA:HB1	1:A:89:LEU:HD22	1.99	0.43
1:A:34:GLU:HG3	1:A:34:GLU:H	1.54	0.43
1:A:42:TRP:HB3	1:A:59:TYR:CZ	2.54	0.43
1:B:64:ILE:HD13	1:B:64:ILE:HG21	1.77	0.42
1:A:32:VAL:HA	1:A:76:LEU:O	2.19	0.42
1:A:1:PRO:CD	1:B:99:PHE:CZ	3.02	0.42
1:A:99:PHE:HE1	1:B:3:ILE:HD12	1.82	0.42
1:B:53:PHE:CD1	1:B:53:PHE:N	2.87	0.42
1:A:57:ARG:HH11	1:A:57:ARG:HD2	1.42	0.42
1:A:34:GLU:HA	1:A:78:GLY:O	2.20	0.41
1:B:14:LYS:HE2	1:B:14:LYS:HB3	1.69	0.41
1:B:89:LEU:O	1:B:92:GLN:HB2	2.20	0.41
1:A:20:LYS:CE	3:A:117:HOH:O	2.68	0.41
1:A:35:GLU:HA	1:A:77:VAL:HG13	2.03	0.41
1:B:25:ASP:OD1	1:B:27:GLY:N	2.46	0.41
1:B:59:TYR:CD1	1:B:59:TYR:N	2.89	0.41
1:A:8:ARG:HG3	3:A:166:HOH:O	2.20	0.41
1:B:56:VAL:CG2	1:B:76:LEU:HB3	2.49	0.41
1:B:82:VAL:CG1	2:B:201:BAY:C17	2.91	0.40

*Continued on next page...*

Continued from previous page...

Atom-1	Atom-2	Interatomic distance (Å)	Clash overlap (Å)
1:A:96:THR:HG21	1:B:4:THR:HG22	2.02	0.40
1:A:3:ILE:HG22	1:A:4:THR:O	2.21	0.40

There are no symmetry-related clashes.

## 5.3 Torsion angles [i](#)

### 5.3.1 Protein backbone [i](#)

In the following table, the Percentiles column shows the percent Ramachandran outliers of the chain as a percentile score with respect to all X-ray entries followed by that with respect to entries of similar resolution.

The Analysed column shows the number of residues for which the backbone conformation was analysed, and the total number of residues.

Mol	Chain	Analysed	Favoured	Allowed	Outliers	Percentiles	
1	A	97/99 (98%)	90 (93%)	7 (7%)	0	100	100
1	B	97/99 (98%)	96 (99%)	1 (1%)	0	100	100
All	All	194/198 (98%)	186 (96%)	8 (4%)	0	100	100

There are no Ramachandran outliers to report.

### 5.3.2 Protein sidechains [i](#)

In the following table, the Percentiles column shows the percent sidechain outliers of the chain as a percentile score with respect to all X-ray entries followed by that with respect to entries of similar resolution.

The Analysed column shows the number of residues for which the sidechain conformation was analysed, and the total number of residues.

Mol	Chain	Analysed	Rotameric	Outliers	Percentiles	
1	A	83/83 (100%)	70 (84%)	13 (16%)	2	3
1	B	83/83 (100%)	72 (87%)	11 (13%)	4	5
All	All	166/166 (100%)	142 (86%)	24 (14%)	3	4

All (24) residues with a non-rotameric sidechain are listed below:

Mol	Chain	Res	Type
1	A	15	ILE
1	A	18	GLN
1	A	19	LEU
1	A	20	LYS
1	A	23	LEU
1	A	41	ARG
1	A	43	LYS
1	A	50	ILE
1	A	54	ILE
1	A	69	HIS
1	A	74	THR
1	A	82	VAL
1	A	88	ASN
1	B	2	GLN
1	B	7	GLN
1	B	12	THR
1	B	34	GLU
1	B	43	LYS
1	B	45	LYS
1	B	46	MET
1	B	50	ILE
1	B	64	ILE
1	B	80	THR
1	B	82	VAL

Sometimes sidechains can be flipped to improve hydrogen bonding and reduce clashes. All (4) such sidechains are listed below:

Mol	Chain	Res	Type
1	A	37	ASN
1	A	92	GLN
1	A	98	ASN
1	B	37	ASN

### 5.3.3 RNA [i](#)

There are no RNA molecules in this entry.

## 5.4 Non-standard residues in protein, DNA, RNA chains [i](#)

There are no non-standard protein/DNA/RNA residues in this entry.

## 5.5 Carbohydrates [i](#)

There are no oligosaccharides in this entry.

## 5.6 Ligand geometry [i](#)

1 ligand is modelled in this entry.

In the following table, the Counts columns list the number of bonds (or angles) for which Mogul statistics could be retrieved, the number of bonds (or angles) that are observed in the model and the number of bonds (or angles) that are defined in the Chemical Component Dictionary. The Link column lists molecule types, if any, to which the group is linked. The Z score for a bond length (or angle) is the number of standard deviations the observed value is removed from the expected value. A bond length (or angle) with  $|Z| > 2$  is considered an outlier worth inspection. RMSZ is the root-mean-square of all Z scores of the bond lengths (or angles).

Mol	Type	Chain	Res	Link	Bond lengths			Bond angles		
					Counts	RMSZ	# Z  > 2	Counts	RMSZ	# Z  > 2
2	BAY	B	201	-	83,85,85	3.15	24 (28%)	108,124,124	3.26	29 (26%)

In the following table, the Chirals column lists the number of chiral outliers, the number of chiral centers analysed, the number of these observed in the model and the number defined in the Chemical Component Dictionary. Similar counts are reported in the Torsion and Rings columns. '-' means no outliers of that kind were identified.

Mol	Type	Chain	Res	Link	Chirals	Torsions	Rings
2	BAY	B	201	-	-	26/96/96/96	0/6/6/6

All (24) bond length outliers are listed below:

Mol	Chain	Res	Type	Atoms	Z	Observed(Å)	Ideal(Å)
2	B	201	BAY	O75-S74	15.74	1.64	1.44
2	B	201	BAY	O76-S74	10.08	1.57	1.44
2	B	201	BAY	C73-S74	9.68	1.83	1.77
2	B	201	BAY	C8-S5	9.15	1.82	1.77
2	B	201	BAY	O7-S5	-9.15	1.32	1.44
2	B	201	BAY	C31-N30	4.16	1.53	1.46
2	B	201	BAY	C77-S74	-3.92	1.78	1.82
2	B	201	BAY	C79-C77	3.83	1.59	1.52
2	B	201	BAY	C18-C19	3.23	1.43	1.36
2	B	201	BAY	C35-C34	3.10	1.44	1.38
2	B	201	BAY	C70-C71	3.09	1.43	1.36
2	B	201	BAY	C80-C77	2.97	1.58	1.52
2	B	201	BAY	C17-C16	2.94	1.42	1.36

*Continued on next page...*

Continued from previous page...

Mol	Chain	Res	Type	Atoms	Z	Observed(Å)	Ideal(Å)
2	B	201	BAY	C64-C63	2.85	1.42	1.37
2	B	201	BAY	C39-C31	2.82	1.58	1.53
2	B	201	BAY	C47-C46	2.54	1.43	1.38
2	B	201	BAY	C69-C68	2.47	1.42	1.36
2	B	201	BAY	C13-C14	2.44	1.41	1.36
2	B	201	BAY	C38-C33	2.31	1.43	1.38
2	B	201	BAY	C10-C11	2.16	1.56	1.51
2	B	201	BAY	C9-C21	2.12	1.55	1.51
2	B	201	BAY	C54-N58	2.11	1.50	1.45
2	B	201	BAY	C12-C11	2.09	1.41	1.37
2	B	201	BAY	C49-C50	2.06	1.42	1.38

All (29) bond angle outliers are listed below:

Mol	Chain	Res	Type	Atoms	Z	Observed(°)	Ideal(°)
2	B	201	BAY	C80-C77-C79	-13.61	86.43	111.05
2	B	201	BAY	O76-S74-O75	-12.51	101.48	118.05
2	B	201	BAY	O6-S5-C4	-12.36	95.42	107.75
2	B	201	BAY	C79-C77-C78	-11.59	90.08	111.05
2	B	201	BAY	O7-S5-C4	10.91	118.62	107.75
2	B	201	BAY	C79-C77-S74	5.72	121.83	107.80
2	B	201	BAY	C1-C4-S5	5.71	121.80	107.80
2	B	201	BAY	C11-C10-C9	-5.69	107.14	113.99
2	B	201	BAY	C80-C77-C78	4.60	119.37	111.05
2	B	201	BAY	C2-C4-C1	-4.11	103.62	111.05
2	B	201	BAY	O53-C52-N51	4.08	130.27	122.96
2	B	201	BAY	C62-C61-C73	-3.98	104.39	111.24
2	B	201	BAY	C78-C77-S74	3.94	117.47	107.80
2	B	201	BAY	C73-C61-C59	3.71	116.05	109.71
2	B	201	BAY	C3-C4-C2	-3.69	104.37	111.05
2	B	201	BAY	C10-C9-C8	-3.66	104.94	111.24
2	B	201	BAY	C26-C25-C24	3.28	120.17	111.16
2	B	201	BAY	C80-C77-S74	3.02	115.22	107.80
2	B	201	BAY	C44-C45-C50	-2.99	115.35	120.90
2	B	201	BAY	C31-N30-C28	-2.92	118.16	123.25
2	B	201	BAY	O53-C52-C54	-2.91	114.83	120.75
2	B	201	BAY	O76-S74-C77	2.90	110.64	107.75
2	B	201	BAY	C12-C11-C20	2.78	123.20	119.06
2	B	201	BAY	C63-C62-C61	-2.61	110.85	113.99
2	B	201	BAY	C57-C55-C54	2.48	117.96	111.16
2	B	201	BAY	C25-C24-N23	2.48	117.43	111.44
2	B	201	BAY	C3-C4-C1	-2.43	106.65	111.05

Continued on next page...

*Continued from previous page...*

Mol	Chain	Res	Type	Atoms	Z	Observed(°)	Ideal(°)
2	B	201	BAY	O40-C39-C31	-2.37	103.61	109.28
2	B	201	BAY	O40-C39-C41	2.10	114.36	109.46

There are no chirality outliers.

All (26) torsion outliers are listed below:

Mol	Chain	Res	Type	Atoms
2	B	201	BAY	C2-C4-S5-O6
2	B	201	BAY	C3-C4-S5-O6
2	B	201	BAY	C11-C10-C9-C8
2	B	201	BAY	C11-C10-C9-C21
2	B	201	BAY	C9-C10-C11-C20
2	B	201	BAY	C61-C62-C63-C72
2	B	201	BAY	C78-C77-S74-C73
2	B	201	BAY	C78-C77-S74-O75
2	B	201	BAY	C78-C77-S74-O76
2	B	201	BAY	C79-C77-S74-O76
2	B	201	BAY	N23-C24-C28-O29
2	B	201	BAY	N23-C24-C28-N30
2	B	201	BAY	C1-C4-S5-O6
2	B	201	BAY	C3-C4-S5-O7
2	B	201	BAY	C61-C62-C63-C64
2	B	201	BAY	O53-C52-C54-N58
2	B	201	BAY	N51-C52-C54-N58
2	B	201	BAY	O53-C52-C54-C55
2	B	201	BAY	C25-C24-C28-O29
2	B	201	BAY	C61-C73-S74-C77
2	B	201	BAY	N51-C52-C54-C55
2	B	201	BAY	C25-C24-C28-N30
2	B	201	BAY	C2-C4-S5-O7
2	B	201	BAY	C9-C8-S5-O6
2	B	201	BAY	C61-C73-S74-O76
2	B	201	BAY	C1-C4-S5-O7

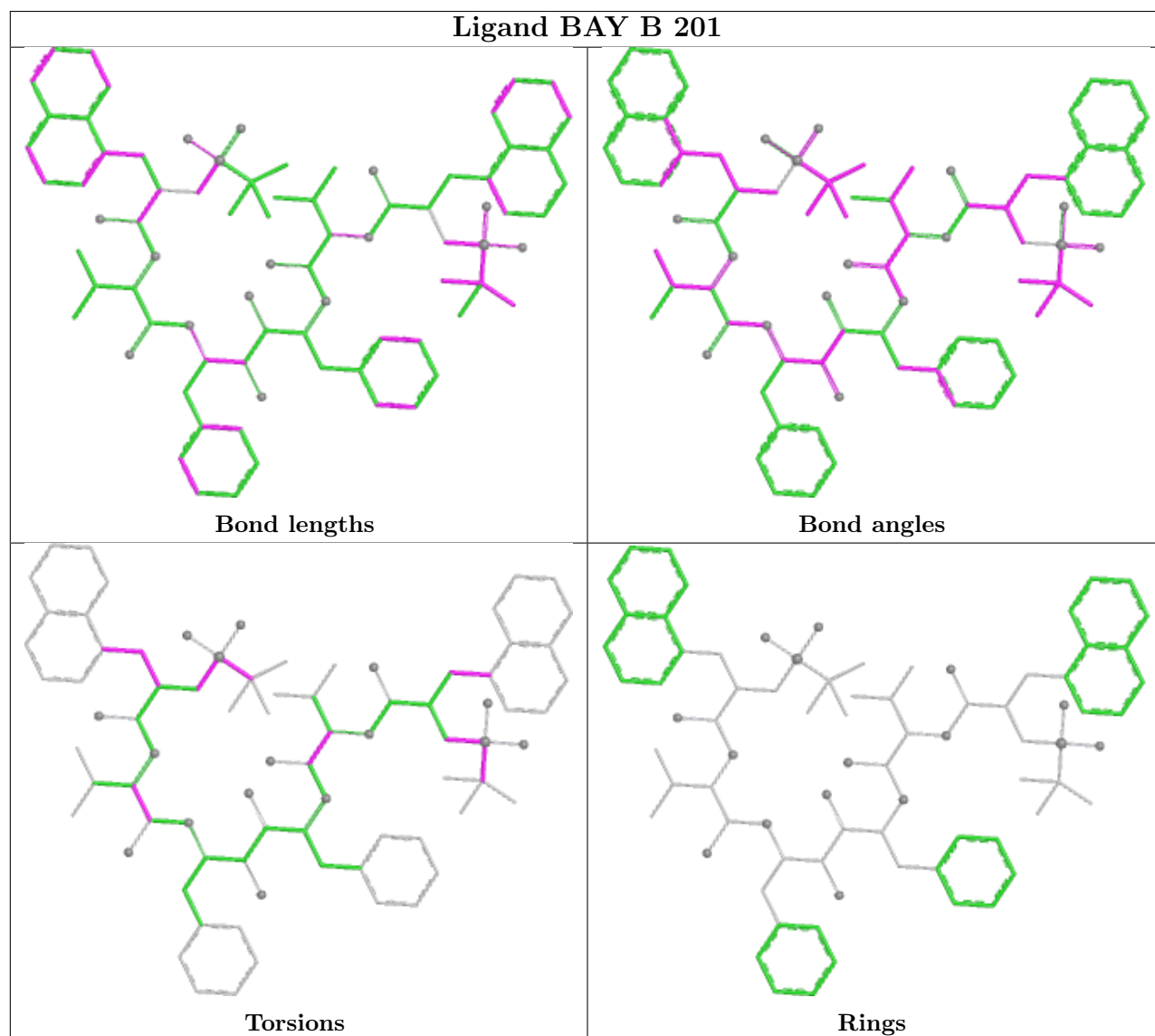
There are no ring outliers.

1 monomer is involved in 17 short contacts:

Mol	Chain	Res	Type	Clashes	Symm-Clashes
2	B	201	BAY	17	0

The following is a two-dimensional graphical depiction of Mogul quality analysis of bond lengths,

bond angles, torsion angles, and ring geometry for all instances of the Ligand of Interest. In addition, ligands with molecular weight > 250 and outliers as shown on the validation Tables will also be included. For torsion angles, if less than 5% of the Mogul distribution of torsion angles is within 10 degrees of the torsion angle in question, then that torsion angle is considered an outlier. Any bond that is central to one or more torsion angles identified as an outlier by Mogul will be highlighted in the graph. For rings, the root-mean-square deviation (RMSD) between the ring in question and similar rings identified by Mogul is calculated over all ring torsion angles. If the average RMSD is greater than 60 degrees and the minimal RMSD between the ring in question and any Mogul-identified rings is also greater than 60 degrees, then that ring is considered an outlier. The outliers are highlighted in purple. The color gray indicates Mogul did not find sufficient equivalents in the CSD to analyse the geometry.



## 5.7 Other polymers [\(i\)](#)

There are no such residues in this entry.

## 5.8 Polymer linkage issues

There are no chain breaks in this entry.

## 6 Fit of model and data [i](#)

### 6.1 Protein, DNA and RNA chains [i](#)

EDS was not executed - this section is therefore empty.

### 6.2 Non-standard residues in protein, DNA, RNA chains [i](#)

EDS was not executed - this section is therefore empty.

### 6.3 Carbohydrates [i](#)

EDS was not executed - this section is therefore empty.

### 6.4 Ligands [i](#)

EDS was not executed - this section is therefore empty.

### 6.5 Other polymers [i](#)

EDS was not executed - this section is therefore empty.