



## wwPDB EM Validation Summary Report ⓘ

Mar 10, 2026 – 06:07 AM UTC

PDB ID : 7VMP / pdb\_00007vmp  
EMDB ID : EMD-33939  
Title : Structure of recombinant RyR2 (Ca<sup>2+</sup> dataset, class 2, open state)  
Authors : Kobayashi, T.; Tsutsumi, A.; Kurebayashi, N.; Kodama, M.; Kikkawa, M.;  
Murayama, T.; Ogawa, H.  
Deposited on : 2021-10-09  
Resolution : 3.50 Å(reported)

This is a wwPDB EM Validation Summary Report for a publicly released PDB entry.

We welcome your comments at [validation@mail.wwpdb.org](mailto:validation@mail.wwpdb.org)

A user guide is available at

<https://www.wwpdb.org/validation/2017/EMValidationReportHelp>

with specific help available everywhere you see the ⓘ symbol.

The types of validation reports are described at

<http://www.wwpdb.org/validation/2017/FAQs#types>.

---

The following versions of software and data (see [references ⓘ](#)) were used in the production of this report:

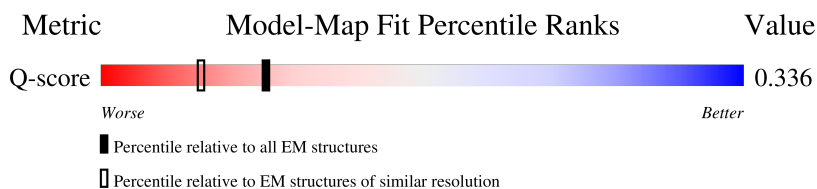
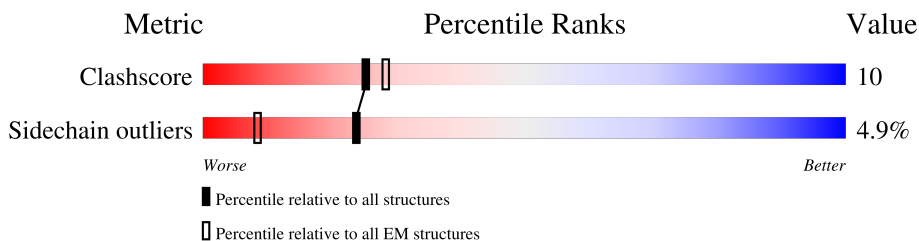
EMDB validation analysis : 0.0.1.dev132  
MolProbity : 4-5-2 with Phenix2.0  
Percentile statistics : 20250101.v01 (using entries in the PDB archive January 1st 2025)  
EM percentile statistics : 202505.v01 (Using data in the EMDB archive up until May 2025)  
MapQ : 1.9.13  
Ideal geometry (proteins) : Engh & Huber (2001)  
Ideal geometry (DNA, RNA) : Parkinson et al. (1996)  
Validation Pipeline (wwPDB-VP) : 2.49

# 1 Overall quality at a glance i

The following experimental techniques were used to determine the structure:  
*ELECTRON MICROSCOPY*

The reported resolution of this entry is 3.50 Å.

Percentile scores (ranging between 0-100) for global validation metrics of the entry are shown in the following graphic. The table shows the number of entries on which the scores are based.



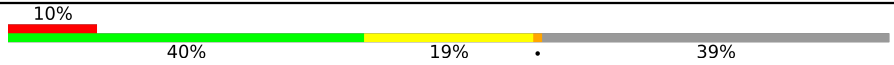
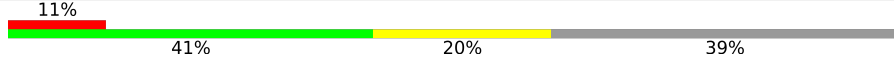
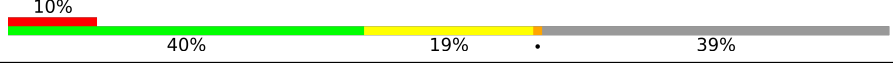
Metric	Whole archive (#Entries)	EM structures (#Entries)	Similar EM resolution (#Entries, resolution range(Å))
Clashescore	229148	23984	-
Sidechain outliers	223484	23102	-
Q-score	-	25397	13085 ( 3.01 - 4.01 )

The table below summarises the geometric issues observed across the polymeric chains and their fit to the map. The red, orange, yellow and green segments of the bar indicate the fraction of residues that contain outliers for  $\geq 3$ , 2, 1 and 0 types of geometric quality criteria respectively. A grey segment represents the fraction of residues that are not modelled. The numeric value for each fraction is indicated below the corresponding segment, with a dot representing fractions  $\leq 5\%$ . The upper red bar (where present) indicates the fraction of residues that have poor fit to the EM map (all-atom inclusion  $< 40\%$ ). The numeric value is given above the bar.

Mol	Chain	Length	Quality of chain
1	A	4966	
1	B	4966	
1	C	4966	
1	D	4966	
2	G	176	

*Continued on next page...*

*Continued from previous page...*

Mol	Chain	Length	Quality of chain
2	H	176	
2	I	176	
2	J	176	

## 2 Entry composition [i](#)

There are 4 unique types of molecules in this entry. The entry contains 122036 atoms, of which 0 are hydrogens and 0 are deuteriums.

In the tables below, the AltConf column contains the number of residues with at least one atom in alternate conformation and the Trace column contains the number of residues modelled with at most 2 atoms.

- Molecule 1 is a protein called Ryanodine receptor 2.

Mol	Chain	Residues	Atoms					AltConf	Trace
			Total	C	N	O	S		
1	A	3991	29688	18782	5180	5553	173	0	0
1	B	3991	29688	18782	5180	5553	173	0	0
1	C	3991	29688	18782	5180	5553	173	0	0
1	D	3991	29688	18782	5180	5553	173	0	0

- Molecule 2 is a protein called Peptidyl-prolyl cis-trans isomerase FKBP1B.

Mol	Chain	Residues	Atoms					AltConf	Trace
			Total	C	N	O	S		
2	G	107	819	516	144	155	4	0	0
2	H	107	819	516	144	155	4	0	0
2	I	107	819	516	144	155	4	0	0
2	J	107	819	516	144	155	4	0	0

There are 276 discrepancies between the modelled and reference sequences:

Chain	Residue	Modelled	Actual	Comment	Reference
G	-67	MET	-	initiating methionine	UNP P68106
G	-66	GLY	-	expression tag	UNP P68106
G	-65	SER	-	expression tag	UNP P68106
G	-64	SER	-	expression tag	UNP P68106
G	-63	HIS	-	expression tag	UNP P68106
G	-62	HIS	-	expression tag	UNP P68106
G	-61	HIS	-	expression tag	UNP P68106
G	-60	HIS	-	expression tag	UNP P68106
G	-59	HIS	-	expression tag	UNP P68106

*Continued on next page...*

*Continued from previous page...*

Chain	Residue	Modelled	Actual	Comment	Reference
G	-58	HIS	-	expression tag	UNP P68106
G	-57	SER	-	expression tag	UNP P68106
G	-56	SER	-	expression tag	UNP P68106
G	-55	GLY	-	expression tag	UNP P68106
G	-54	LEU	-	expression tag	UNP P68106
G	-53	VAL	-	expression tag	UNP P68106
G	-52	PRO	-	expression tag	UNP P68106
G	-51	ARG	-	expression tag	UNP P68106
G	-50	GLY	-	expression tag	UNP P68106
G	-49	SER	-	expression tag	UNP P68106
G	-48	HIS	-	expression tag	UNP P68106
G	-47	MET	-	expression tag	UNP P68106
G	-46	ALA	-	expression tag	UNP P68106
G	-45	SER	-	expression tag	UNP P68106
G	-44	MET	-	expression tag	UNP P68106
G	-43	ASP	-	expression tag	UNP P68106
G	-42	GLU	-	expression tag	UNP P68106
G	-41	LYS	-	expression tag	UNP P68106
G	-40	THR	-	expression tag	UNP P68106
G	-39	THR	-	expression tag	UNP P68106
G	-38	GLY	-	expression tag	UNP P68106
G	-37	TRP	-	expression tag	UNP P68106
G	-36	ARG	-	expression tag	UNP P68106
G	-35	GLY	-	expression tag	UNP P68106
G	-34	GLY	-	expression tag	UNP P68106
G	-33	HIS	-	expression tag	UNP P68106
G	-32	VAL	-	expression tag	UNP P68106
G	-31	VAL	-	expression tag	UNP P68106
G	-30	GLU	-	expression tag	UNP P68106
G	-29	GLY	-	expression tag	UNP P68106
G	-28	LEU	-	expression tag	UNP P68106
G	-27	ALA	-	expression tag	UNP P68106
G	-26	GLY	-	expression tag	UNP P68106
G	-25	GLU	-	expression tag	UNP P68106
G	-24	LEU	-	expression tag	UNP P68106
G	-23	GLU	-	expression tag	UNP P68106
G	-22	GLN	-	expression tag	UNP P68106
G	-21	LEU	-	expression tag	UNP P68106
G	-20	ARG	-	expression tag	UNP P68106
G	-19	ALA	-	expression tag	UNP P68106
G	-18	ARG	-	expression tag	UNP P68106
G	-17	LEU	-	expression tag	UNP P68106

*Continued on next page...*

*Continued from previous page...*

Chain	Residue	Modelled	Actual	Comment	Reference
G	-16	GLU	-	expression tag	UNP P68106
G	-15	HIS	-	expression tag	UNP P68106
G	-14	HIS	-	expression tag	UNP P68106
G	-13	PRO	-	expression tag	UNP P68106
G	-12	GLN	-	expression tag	UNP P68106
G	-11	GLY	-	expression tag	UNP P68106
G	-10	GLN	-	expression tag	UNP P68106
G	-9	ARG	-	expression tag	UNP P68106
G	-8	GLU	-	expression tag	UNP P68106
G	-7	PRO	-	expression tag	UNP P68106
G	-6	GLY	-	expression tag	UNP P68106
G	-5	SER	-	expression tag	UNP P68106
G	-4	GLY	-	expression tag	UNP P68106
G	-3	GLY	-	expression tag	UNP P68106
G	-2	SER	-	expression tag	UNP P68106
G	-1	GLY	-	expression tag	UNP P68106
G	0	GLY	-	expression tag	UNP P68106
G	1	THR	-	expression tag	UNP P68106
H	-67	MET	-	initiating methionine	UNP P68106
H	-66	GLY	-	expression tag	UNP P68106
H	-65	SER	-	expression tag	UNP P68106
H	-64	SER	-	expression tag	UNP P68106
H	-63	HIS	-	expression tag	UNP P68106
H	-62	HIS	-	expression tag	UNP P68106
H	-61	HIS	-	expression tag	UNP P68106
H	-60	HIS	-	expression tag	UNP P68106
H	-59	HIS	-	expression tag	UNP P68106
H	-58	HIS	-	expression tag	UNP P68106
H	-57	SER	-	expression tag	UNP P68106
H	-56	SER	-	expression tag	UNP P68106
H	-55	GLY	-	expression tag	UNP P68106
H	-54	LEU	-	expression tag	UNP P68106
H	-53	VAL	-	expression tag	UNP P68106
H	-52	PRO	-	expression tag	UNP P68106
H	-51	ARG	-	expression tag	UNP P68106
H	-50	GLY	-	expression tag	UNP P68106
H	-49	SER	-	expression tag	UNP P68106
H	-48	HIS	-	expression tag	UNP P68106
H	-47	MET	-	expression tag	UNP P68106
H	-46	ALA	-	expression tag	UNP P68106
H	-45	SER	-	expression tag	UNP P68106
H	-44	MET	-	expression tag	UNP P68106

*Continued on next page...*

*Continued from previous page...*

Chain	Residue	Modelled	Actual	Comment	Reference
H	-43	ASP	-	expression tag	UNP P68106
H	-42	GLU	-	expression tag	UNP P68106
H	-41	LYS	-	expression tag	UNP P68106
H	-40	THR	-	expression tag	UNP P68106
H	-39	THR	-	expression tag	UNP P68106
H	-38	GLY	-	expression tag	UNP P68106
H	-37	TRP	-	expression tag	UNP P68106
H	-36	ARG	-	expression tag	UNP P68106
H	-35	GLY	-	expression tag	UNP P68106
H	-34	GLY	-	expression tag	UNP P68106
H	-33	HIS	-	expression tag	UNP P68106
H	-32	VAL	-	expression tag	UNP P68106
H	-31	VAL	-	expression tag	UNP P68106
H	-30	GLU	-	expression tag	UNP P68106
H	-29	GLY	-	expression tag	UNP P68106
H	-28	LEU	-	expression tag	UNP P68106
H	-27	ALA	-	expression tag	UNP P68106
H	-26	GLY	-	expression tag	UNP P68106
H	-25	GLU	-	expression tag	UNP P68106
H	-24	LEU	-	expression tag	UNP P68106
H	-23	GLU	-	expression tag	UNP P68106
H	-22	GLN	-	expression tag	UNP P68106
H	-21	LEU	-	expression tag	UNP P68106
H	-20	ARG	-	expression tag	UNP P68106
H	-19	ALA	-	expression tag	UNP P68106
H	-18	ARG	-	expression tag	UNP P68106
H	-17	LEU	-	expression tag	UNP P68106
H	-16	GLU	-	expression tag	UNP P68106
H	-15	HIS	-	expression tag	UNP P68106
H	-14	HIS	-	expression tag	UNP P68106
H	-13	PRO	-	expression tag	UNP P68106
H	-12	GLN	-	expression tag	UNP P68106
H	-11	GLY	-	expression tag	UNP P68106
H	-10	GLN	-	expression tag	UNP P68106
H	-9	ARG	-	expression tag	UNP P68106
H	-8	GLU	-	expression tag	UNP P68106
H	-7	PRO	-	expression tag	UNP P68106
H	-6	GLY	-	expression tag	UNP P68106
H	-5	SER	-	expression tag	UNP P68106
H	-4	GLY	-	expression tag	UNP P68106
H	-3	GLY	-	expression tag	UNP P68106
H	-2	SER	-	expression tag	UNP P68106

*Continued on next page...*

*Continued from previous page...*

Chain	Residue	Modelled	Actual	Comment	Reference
H	-1	GLY	-	expression tag	UNP P68106
H	0	GLY	-	expression tag	UNP P68106
H	1	THR	-	expression tag	UNP P68106
I	-67	MET	-	initiating methionine	UNP P68106
I	-66	GLY	-	expression tag	UNP P68106
I	-65	SER	-	expression tag	UNP P68106
I	-64	SER	-	expression tag	UNP P68106
I	-63	HIS	-	expression tag	UNP P68106
I	-62	HIS	-	expression tag	UNP P68106
I	-61	HIS	-	expression tag	UNP P68106
I	-60	HIS	-	expression tag	UNP P68106
I	-59	HIS	-	expression tag	UNP P68106
I	-58	HIS	-	expression tag	UNP P68106
I	-57	SER	-	expression tag	UNP P68106
I	-56	SER	-	expression tag	UNP P68106
I	-55	GLY	-	expression tag	UNP P68106
I	-54	LEU	-	expression tag	UNP P68106
I	-53	VAL	-	expression tag	UNP P68106
I	-52	PRO	-	expression tag	UNP P68106
I	-51	ARG	-	expression tag	UNP P68106
I	-50	GLY	-	expression tag	UNP P68106
I	-49	SER	-	expression tag	UNP P68106
I	-48	HIS	-	expression tag	UNP P68106
I	-47	MET	-	expression tag	UNP P68106
I	-46	ALA	-	expression tag	UNP P68106
I	-45	SER	-	expression tag	UNP P68106
I	-44	MET	-	expression tag	UNP P68106
I	-43	ASP	-	expression tag	UNP P68106
I	-42	GLU	-	expression tag	UNP P68106
I	-41	LYS	-	expression tag	UNP P68106
I	-40	THR	-	expression tag	UNP P68106
I	-39	THR	-	expression tag	UNP P68106
I	-38	GLY	-	expression tag	UNP P68106
I	-37	TRP	-	expression tag	UNP P68106
I	-36	ARG	-	expression tag	UNP P68106
I	-35	GLY	-	expression tag	UNP P68106
I	-34	GLY	-	expression tag	UNP P68106
I	-33	HIS	-	expression tag	UNP P68106
I	-32	VAL	-	expression tag	UNP P68106
I	-31	VAL	-	expression tag	UNP P68106
I	-30	GLU	-	expression tag	UNP P68106
I	-29	GLY	-	expression tag	UNP P68106

*Continued on next page...*

*Continued from previous page...*

Chain	Residue	Modelled	Actual	Comment	Reference
I	-28	LEU	-	expression tag	UNP P68106
I	-27	ALA	-	expression tag	UNP P68106
I	-26	GLY	-	expression tag	UNP P68106
I	-25	GLU	-	expression tag	UNP P68106
I	-24	LEU	-	expression tag	UNP P68106
I	-23	GLU	-	expression tag	UNP P68106
I	-22	GLN	-	expression tag	UNP P68106
I	-21	LEU	-	expression tag	UNP P68106
I	-20	ARG	-	expression tag	UNP P68106
I	-19	ALA	-	expression tag	UNP P68106
I	-18	ARG	-	expression tag	UNP P68106
I	-17	LEU	-	expression tag	UNP P68106
I	-16	GLU	-	expression tag	UNP P68106
I	-15	HIS	-	expression tag	UNP P68106
I	-14	HIS	-	expression tag	UNP P68106
I	-13	PRO	-	expression tag	UNP P68106
I	-12	GLN	-	expression tag	UNP P68106
I	-11	GLY	-	expression tag	UNP P68106
I	-10	GLN	-	expression tag	UNP P68106
I	-9	ARG	-	expression tag	UNP P68106
I	-8	GLU	-	expression tag	UNP P68106
I	-7	PRO	-	expression tag	UNP P68106
I	-6	GLY	-	expression tag	UNP P68106
I	-5	SER	-	expression tag	UNP P68106
I	-4	GLY	-	expression tag	UNP P68106
I	-3	GLY	-	expression tag	UNP P68106
I	-2	SER	-	expression tag	UNP P68106
I	-1	GLY	-	expression tag	UNP P68106
I	0	GLY	-	expression tag	UNP P68106
I	1	THR	-	expression tag	UNP P68106
J	-67	MET	-	initiating methionine	UNP P68106
J	-66	GLY	-	expression tag	UNP P68106
J	-65	SER	-	expression tag	UNP P68106
J	-64	SER	-	expression tag	UNP P68106
J	-63	HIS	-	expression tag	UNP P68106
J	-62	HIS	-	expression tag	UNP P68106
J	-61	HIS	-	expression tag	UNP P68106
J	-60	HIS	-	expression tag	UNP P68106
J	-59	HIS	-	expression tag	UNP P68106
J	-58	HIS	-	expression tag	UNP P68106
J	-57	SER	-	expression tag	UNP P68106
J	-56	SER	-	expression tag	UNP P68106

*Continued on next page...*

*Continued from previous page...*

Chain	Residue	Modelled	Actual	Comment	Reference
J	-55	GLY	-	expression tag	UNP P68106
J	-54	LEU	-	expression tag	UNP P68106
J	-53	VAL	-	expression tag	UNP P68106
J	-52	PRO	-	expression tag	UNP P68106
J	-51	ARG	-	expression tag	UNP P68106
J	-50	GLY	-	expression tag	UNP P68106
J	-49	SER	-	expression tag	UNP P68106
J	-48	HIS	-	expression tag	UNP P68106
J	-47	MET	-	expression tag	UNP P68106
J	-46	ALA	-	expression tag	UNP P68106
J	-45	SER	-	expression tag	UNP P68106
J	-44	MET	-	expression tag	UNP P68106
J	-43	ASP	-	expression tag	UNP P68106
J	-42	GLU	-	expression tag	UNP P68106
J	-41	LYS	-	expression tag	UNP P68106
J	-40	THR	-	expression tag	UNP P68106
J	-39	THR	-	expression tag	UNP P68106
J	-38	GLY	-	expression tag	UNP P68106
J	-37	TRP	-	expression tag	UNP P68106
J	-36	ARG	-	expression tag	UNP P68106
J	-35	GLY	-	expression tag	UNP P68106
J	-34	GLY	-	expression tag	UNP P68106
J	-33	HIS	-	expression tag	UNP P68106
J	-32	VAL	-	expression tag	UNP P68106
J	-31	VAL	-	expression tag	UNP P68106
J	-30	GLU	-	expression tag	UNP P68106
J	-29	GLY	-	expression tag	UNP P68106
J	-28	LEU	-	expression tag	UNP P68106
J	-27	ALA	-	expression tag	UNP P68106
J	-26	GLY	-	expression tag	UNP P68106
J	-25	GLU	-	expression tag	UNP P68106
J	-24	LEU	-	expression tag	UNP P68106
J	-23	GLU	-	expression tag	UNP P68106
J	-22	GLN	-	expression tag	UNP P68106
J	-21	LEU	-	expression tag	UNP P68106
J	-20	ARG	-	expression tag	UNP P68106
J	-19	ALA	-	expression tag	UNP P68106
J	-18	ARG	-	expression tag	UNP P68106
J	-17	LEU	-	expression tag	UNP P68106
J	-16	GLU	-	expression tag	UNP P68106
J	-15	HIS	-	expression tag	UNP P68106
J	-14	HIS	-	expression tag	UNP P68106

*Continued on next page...*

*Continued from previous page...*

Chain	Residue	Modelled	Actual	Comment	Reference
J	-13	PRO	-	expression tag	UNP P68106
J	-12	GLN	-	expression tag	UNP P68106
J	-11	GLY	-	expression tag	UNP P68106
J	-10	GLN	-	expression tag	UNP P68106
J	-9	ARG	-	expression tag	UNP P68106
J	-8	GLU	-	expression tag	UNP P68106
J	-7	PRO	-	expression tag	UNP P68106
J	-6	GLY	-	expression tag	UNP P68106
J	-5	SER	-	expression tag	UNP P68106
J	-4	GLY	-	expression tag	UNP P68106
J	-3	GLY	-	expression tag	UNP P68106
J	-2	SER	-	expression tag	UNP P68106
J	-1	GLY	-	expression tag	UNP P68106
J	0	GLY	-	expression tag	UNP P68106
J	1	THR	-	expression tag	UNP P68106

- Molecule 3 is ZINC ION (CCD ID: ZN) (formula: Zn) (labeled as "Ligand of Interest" by depositor).

Mol	Chain	Residues	Atoms	AltConf
3	A	1	Total Zn 1 1	0
3	B	1	Total Zn 1 1	0
3	C	1	Total Zn 1 1	0
3	D	1	Total Zn 1 1	0

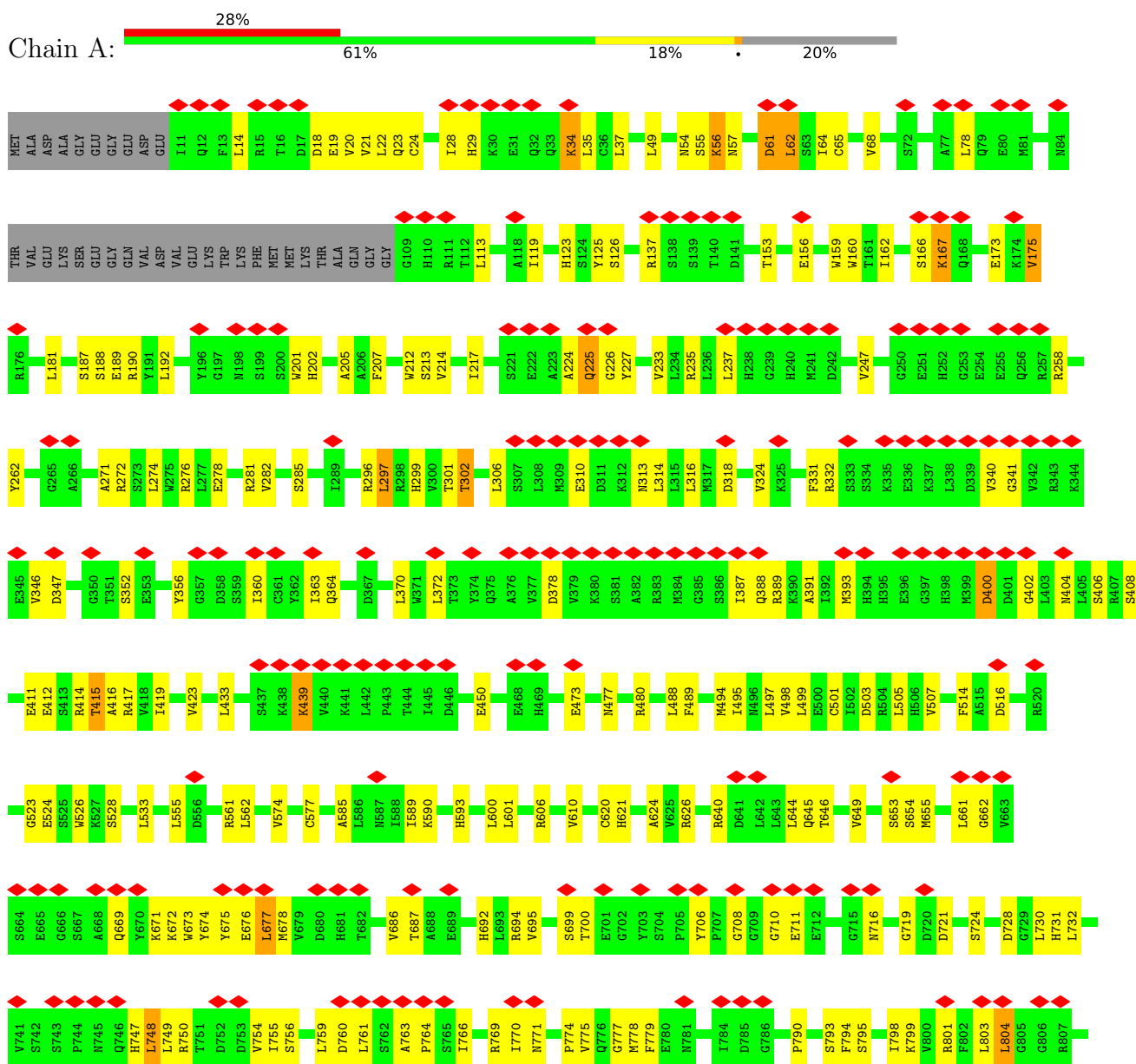
- Molecule 4 is CALCIUM ION (CCD ID: CA) (formula: Ca) (labeled as "Ligand of Interest" by depositor).

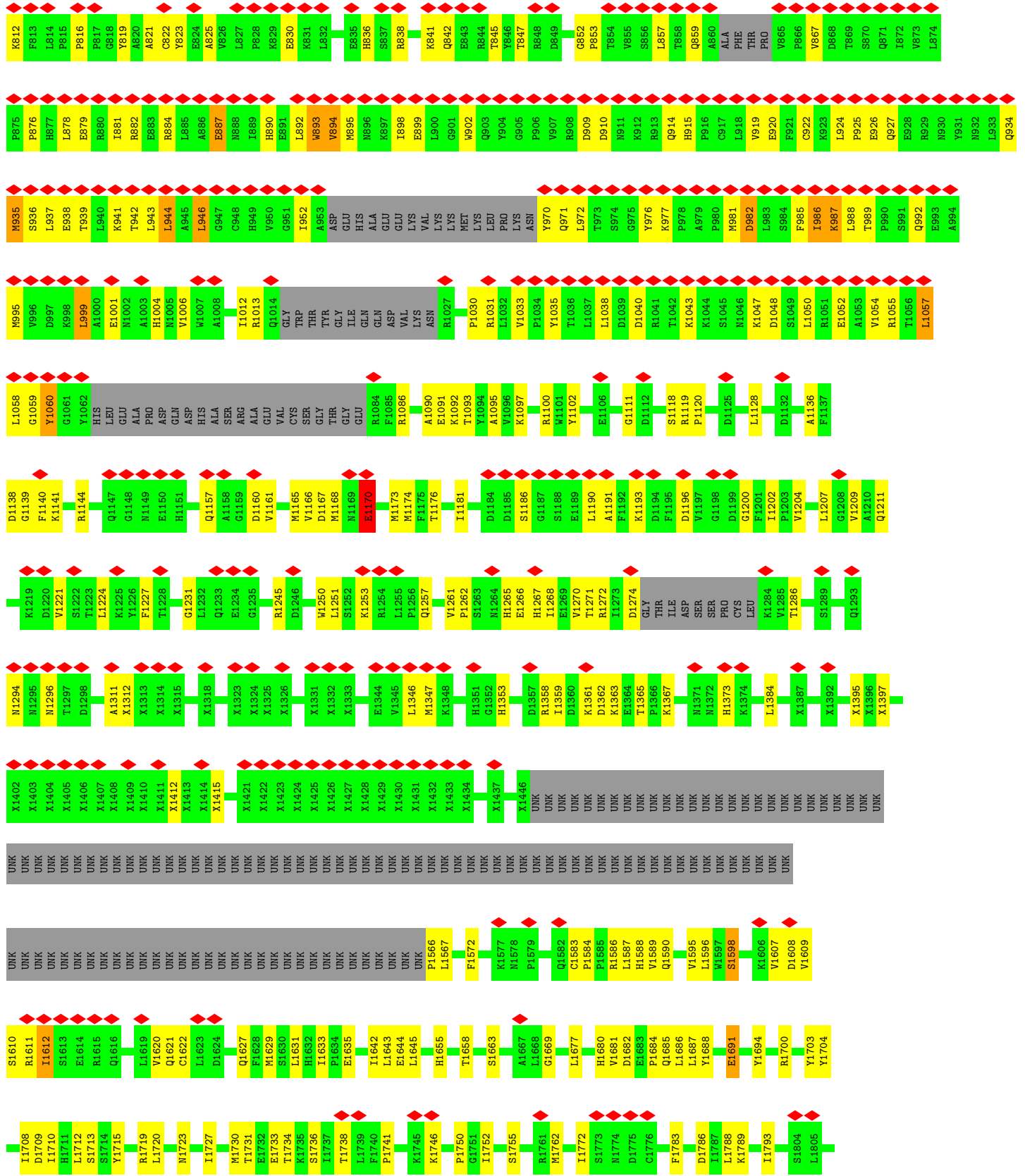
Mol	Chain	Residues	Atoms	AltConf
4	A	1	Total Ca 1 1	0
4	B	1	Total Ca 1 1	0
4	C	1	Total Ca 1 1	0
4	D	1	Total Ca 1 1	0

### 3 Residue-property plots

These plots are drawn for all protein, RNA, DNA and oligosaccharide chains in the entry. The first graphic for a chain summarises the proportions of the various outlier classes displayed in the second graphic. The second graphic shows the sequence view annotated by issues in geometry and atom inclusion in map density. Residues are color-coded according to the number of geometric quality criteria for which they contain at least one outlier: green = 0, yellow = 1, orange = 2 and red = 3 or more. A red diamond above a residue indicates a poor fit to the EM map for this residue (all-atom inclusion < 40%). Stretches of 2 or more consecutive residues without any outlier are shown as a green connector. Residues present in the sample, but not in the model, are shown in grey.

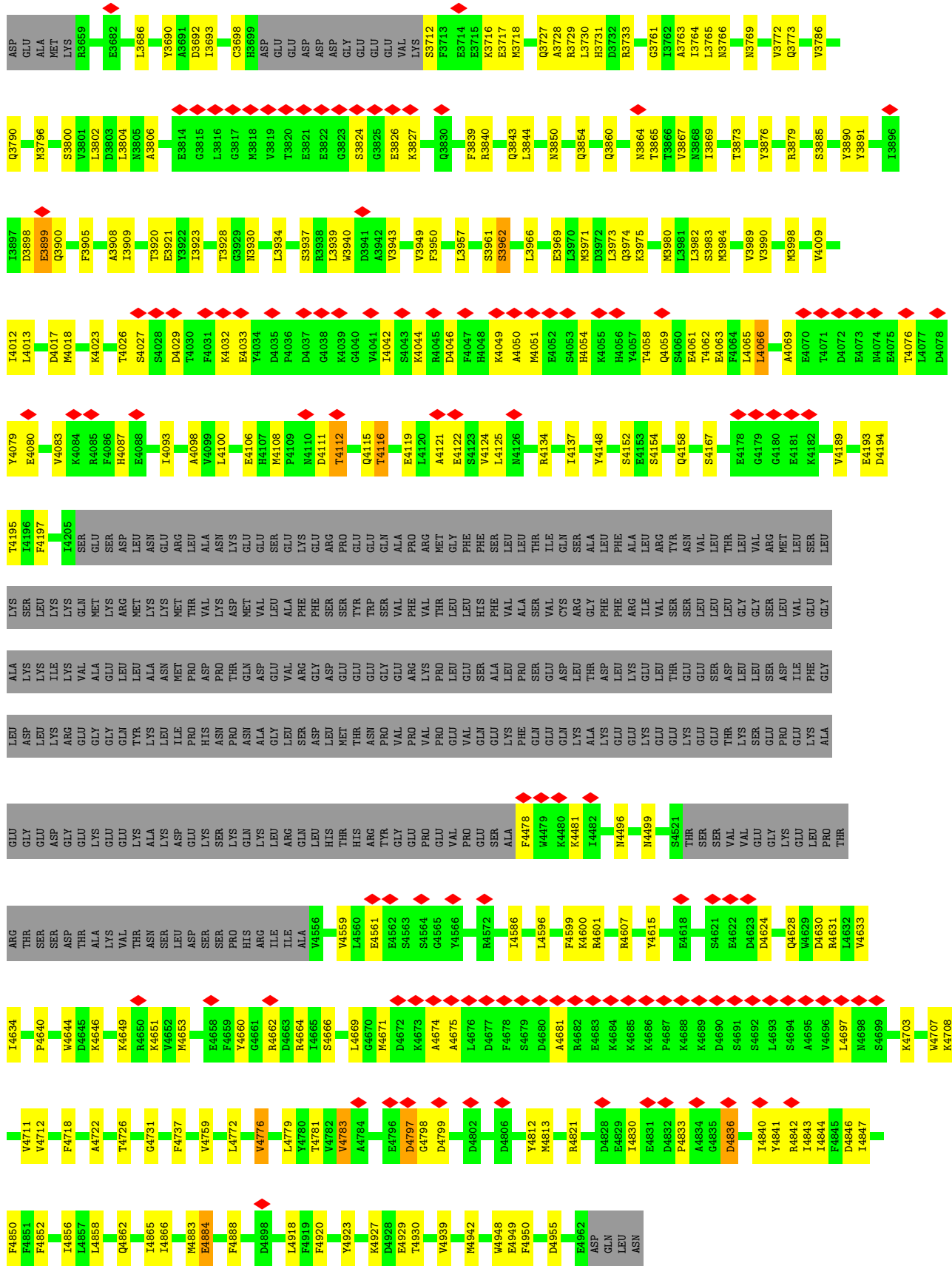
#### • Molecule 1: Ryanodine receptor 2



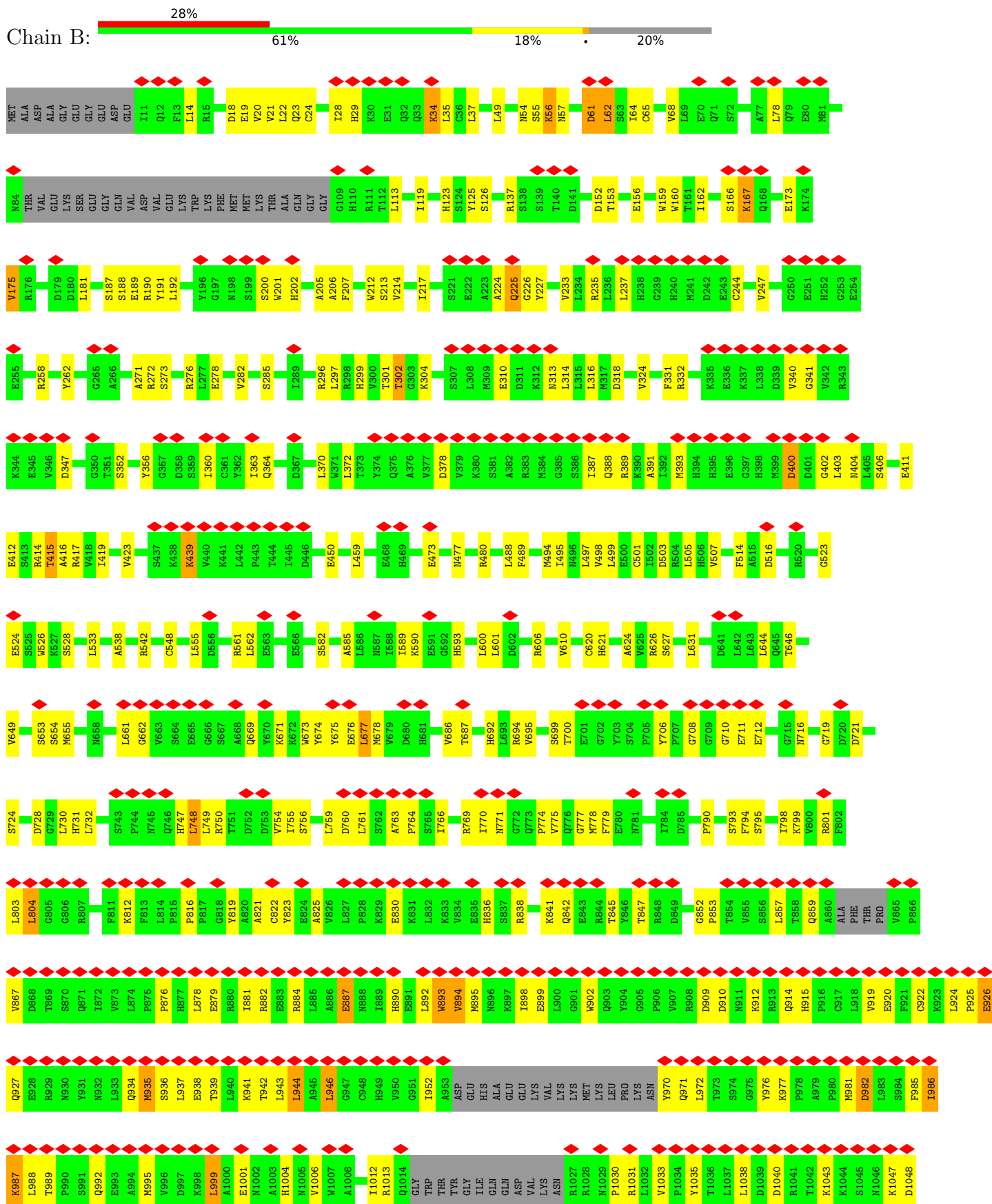








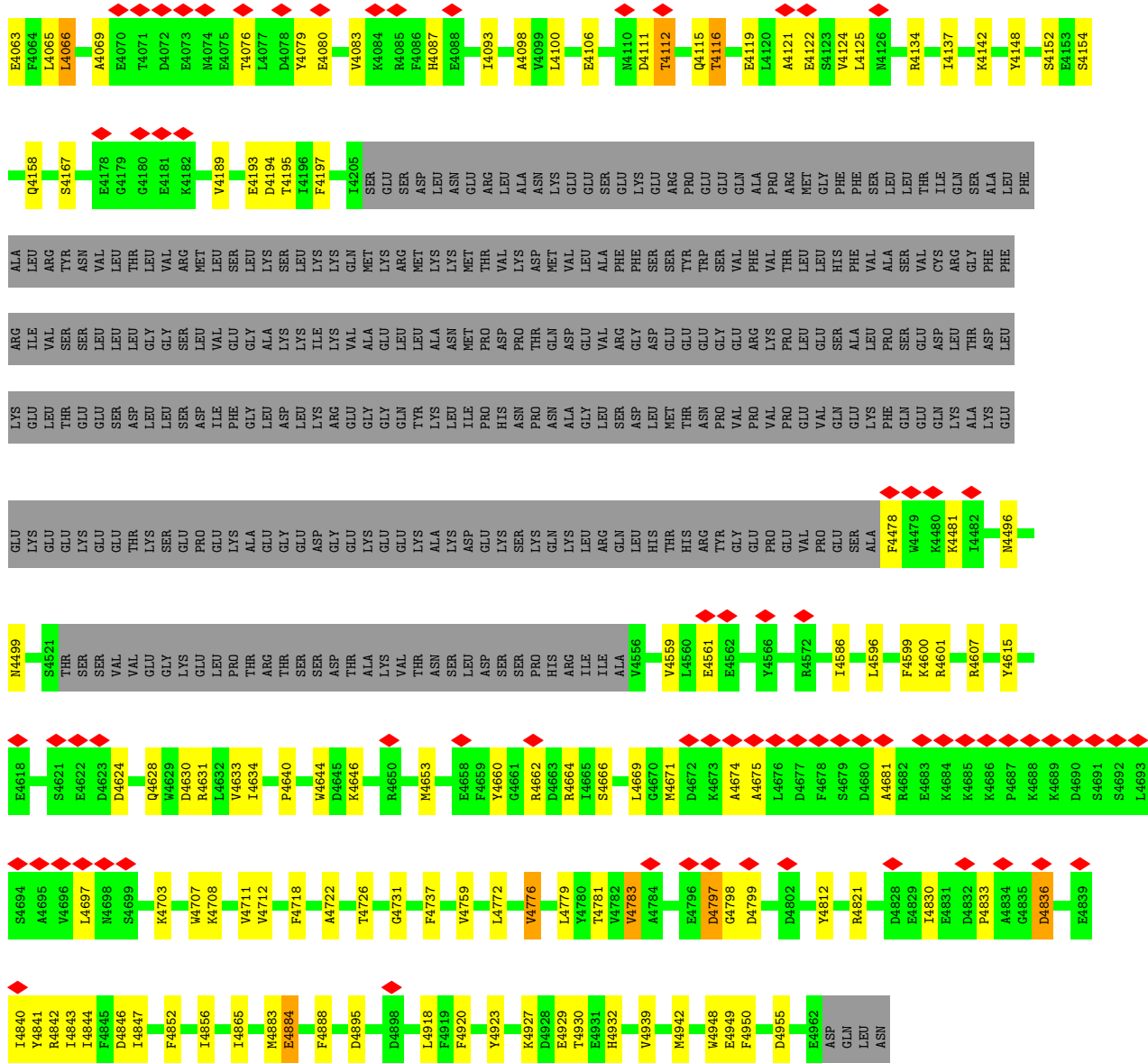
• Molecule 1: Ryanodine receptor 2



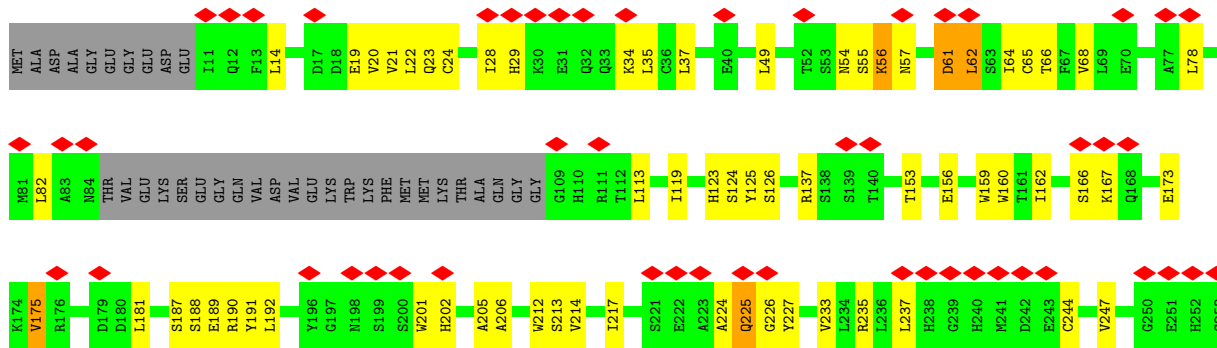


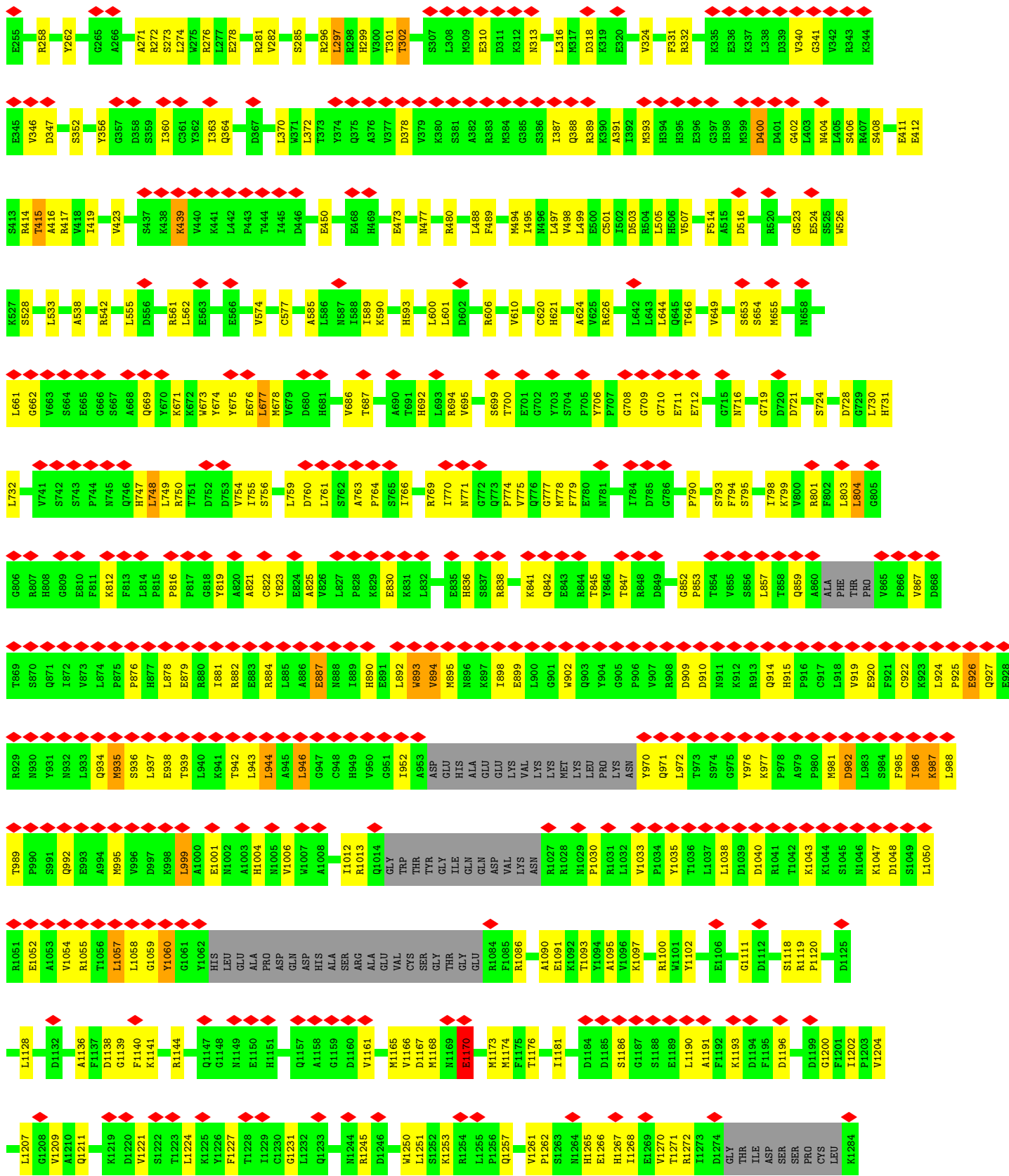


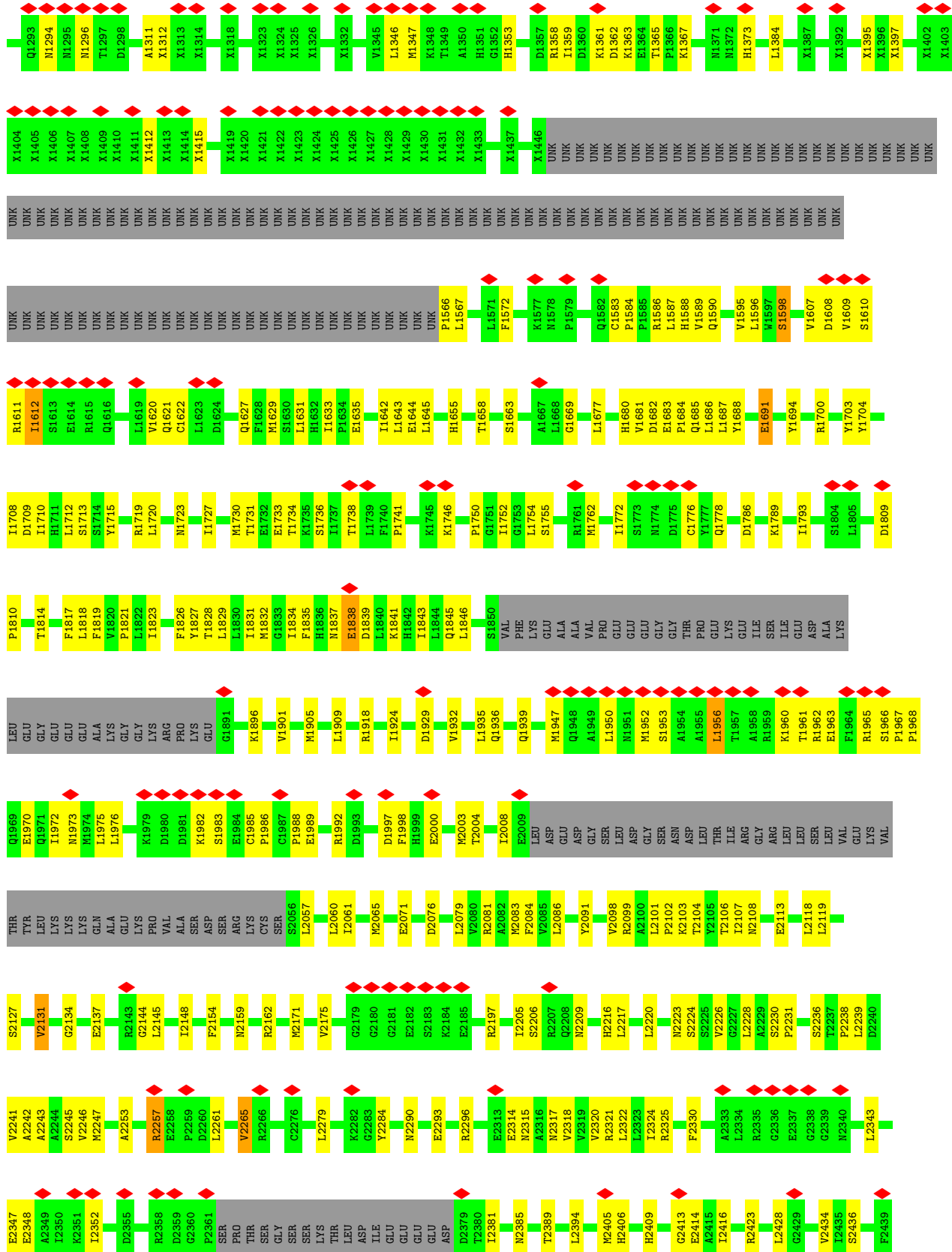
L3973	T3866	H3731	L3620	X3500	X3380	X3260	X3200	X3140	UNK
Q3974	I3866	D3732	E3624	X3501	X3381	X3261	X3201	X3141	UNK
K3975	N3867	R3733		X3502	X3382	X3262	X3202	X3142	UNK
M3980	M3868	G3761	T3630	X3503	X3383	X3263	UNK	X3143	UNK
L3981	I3869	L3762	E3631	X3504	X3384	X3264	UNK	X3144	UNK
L3982	T3870	A3763	L3639	X3505	X3385	X3265	UNK	X3145	UNK
M3983	Y3876	L3764	G3647	X3506	X3386	X3266	UNK	X3146	UNK
M3984	L3877	N3766	A3648	X3507	X3387	X3267	UNK	X3147	UNK
V3989	L3878	N3766	GLU	X3508	X3388	X3268	UNK	X3148	UNK
V3990	R3879	N3769	LEU	X3509	X3389	X3269	UNK	X3149	UNK
V4009	S3885	V3772	PRO	X3510	X3390	X3270	UNK	X3150	UNK
L4012	Y3890	Q3773	GLU	X3511	X3391	X3271	UNK	X3151	UNK
L4013	Y3891	V3786	GLU	X3512	X3392	X3272	UNK	X3152	UNK
D4017	D3898	Q3790	ASP	X3513	X3393	X3273	UNK	X3153	UNK
H4018	E3899	M3796	ALA	X3514	X3394	X3274	UNK	X3154	UNK
R4023	Q3900	M3796	MET	X3515	X3395	X3275	UNK	X3155	UNK
T4026	F3905	S3800	LYS	X3516	X3396	X3276	UNK	X3156	UNK
S4027	S4026	R3659	L3666	X3517	X3397	X3277	UNK	X3157	UNK
S4028	A3908	L3802	E3682	X3518	X3398	X3278	UNK	X3158	UNK
D4029	I3909	D3803	L3686	X3519	X3399	X3279	UNK	X3159	UNK
T4030	T3920	L3804	E3686	X3520	X3400	X3280	UNK	X3160	UNK
F4031	E3921	N3805	L3686	X3521	X3401	X3281	UNK	X3161	UNK
K4032	Y3922	A3806	Y3690	X3522	X3402	X3282	UNK	X3162	UNK
V4033	I3923	K3812	D3691	X3523	X3403	X3283	UNK	X3163	UNK
V4034	P3926	E3813	A3691	X3524	X3404	X3284	UNK	X3164	UNK
D4035	C3927	E3814	D3692	X3525	X3405	X3285	UNK	X3165	UNK
F4036	T3928	G3815	L3693	X3526	X3406	X3286	UNK	X3166	UNK
D4037	S3937	L3816	C3698	X3527	X3407	X3287	UNK	X3167	UNK
G4038	R3938	G3817	H3699	X3528	X3408	X3288	UNK	X3168	UNK
K4039	L3939	M3818	ASP	X3529	X3409	X3289	UNK	X3169	UNK
G4040	M3940	V3819	GLU	X3530	X3410	X3290	UNK	X3170	UNK
V4041	D3941	T3820	ASP	X3531	X3411	X3291	UNK	X3171	UNK
V4042	A3942	E3822	ASP	X3532	X3412	X3292	UNK	X3172	UNK
S4043	V3943	G3823	GLY	X3533	X3413	X3293	UNK	X3173	UNK
K4044	V3949	G3824	GLY	X3534	X3414	X3294	UNK	X3174	UNK
R4045	F3950	M3825	GLU	X3535	X3415	X3295	UNK	X3175	UNK
D4046	V3956	G3826	GLU	X3536	X3416	X3296	UNK	X3176	UNK
F4047	L3957	K3827	VAL	X3537	X3417	X3297	UNK	X3177	UNK
H4048	M3958	F3712	LYS	X3538	X3418	X3298	UNK	X3178	UNK
K4049	K3956	F3713	ASP	X3539	X3419	X3299	UNK	X3179	UNK
A4050	L3957	E3714	UNK	X3540	X3420	X3300	UNK	X3180	UNK
M4051	S3961	E3715	UNK	X3541	X3421	X3301	UNK	X3181	UNK
H4052	S3962	K3716	UNK	X3542	X3422	X3302	UNK	X3182	UNK
H4054	L3966	E3717	UNK	X3543	X3423	X3303	UNK	X3183	UNK
H4055	E3969	M3718	UNK	X3544	X3424	X3304	UNK	X3184	UNK
H4056	L3970	Q3727	P3611	X3545	X3425	X3305	UNK	X3185	UNK
T4057	L3971	A3728	H3613	X3546	X3426	X3306	UNK	X3186	UNK
T4058	M3971	R3729	R3614	X3547	X3427	X3307	UNK	X3187	UNK
Q4059	D3972	L3730	V3615	X3548	X3428	X3308	UNK	X3188	UNK
S4060			N3617	X3549	X3429	X3309	UNK	X3189	UNK
E4061			L3618	X3550	X3430	X3310	UNK	X3190	UNK
T4062			F3619	X3551	X3431	X3311	UNK	X3191	UNK
				X3552	X3432	X3312	UNK	X3192	UNK
				X3553	X3433	X3313	UNK	X3193	UNK
				X3554	X3434	X3314	UNK	X3194	UNK
				X3555	UNK	X3315	UNK	X3195	UNK
				X3556	UNK	X3316	UNK	X3196	UNK
				X3557	UNK	X3317	UNK	X3197	UNK
				X3558	UNK	X3318	UNK	X3198	UNK
				X3559	UNK	X3319	UNK	X3199	UNK

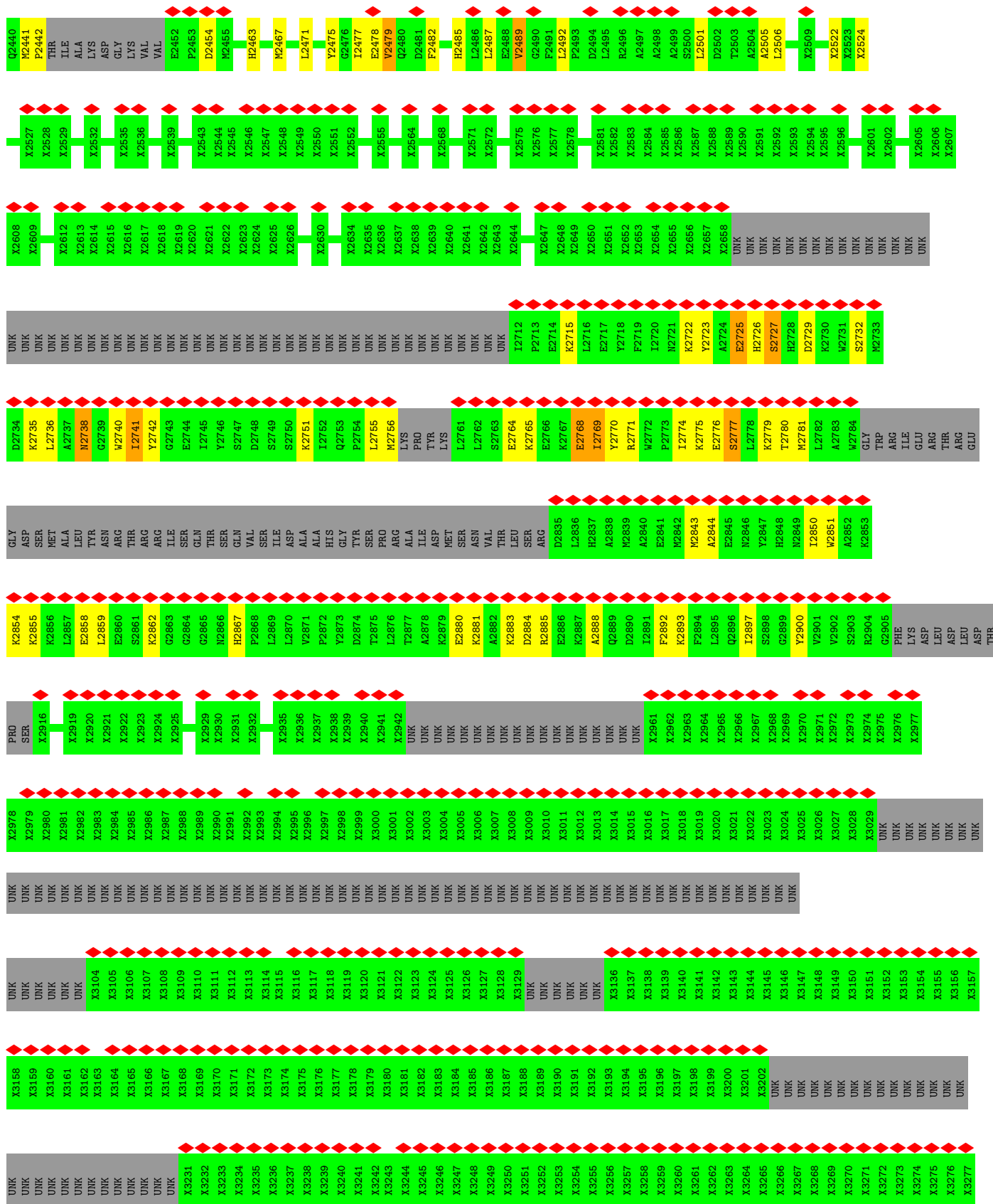


• Molecule 1: Ryanodine receptor 2

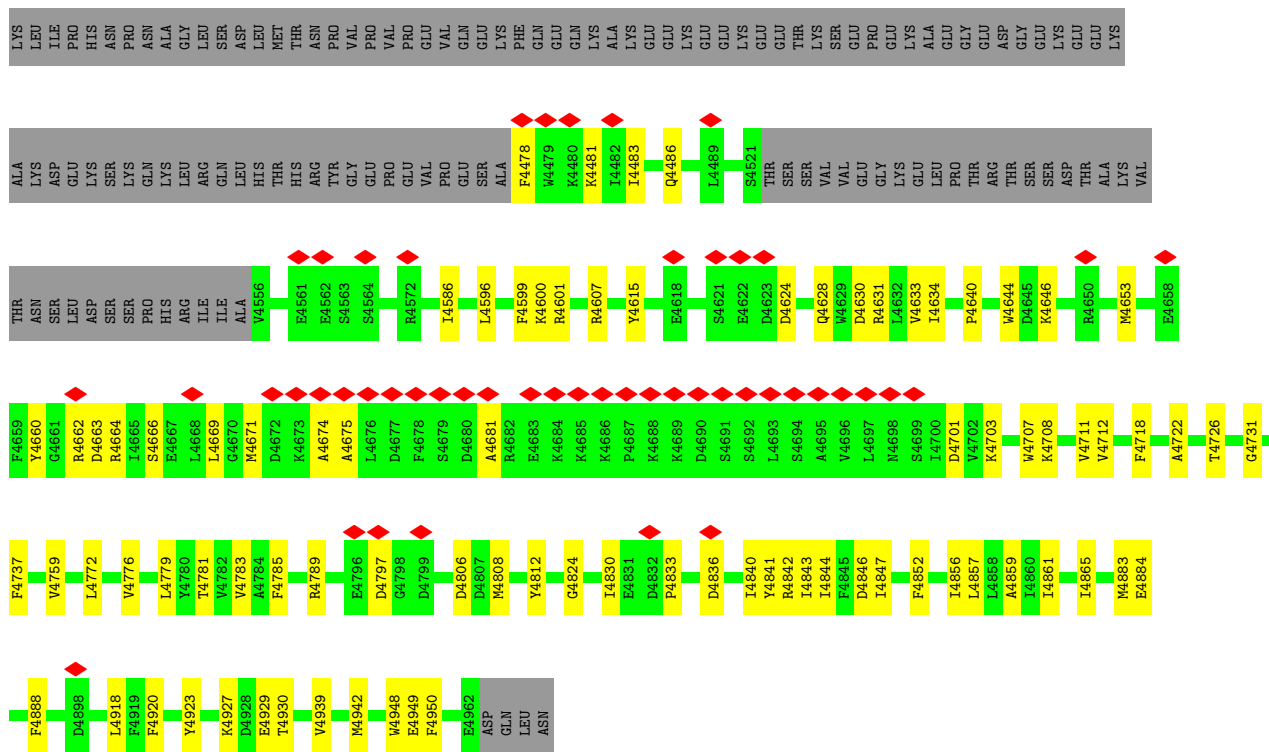




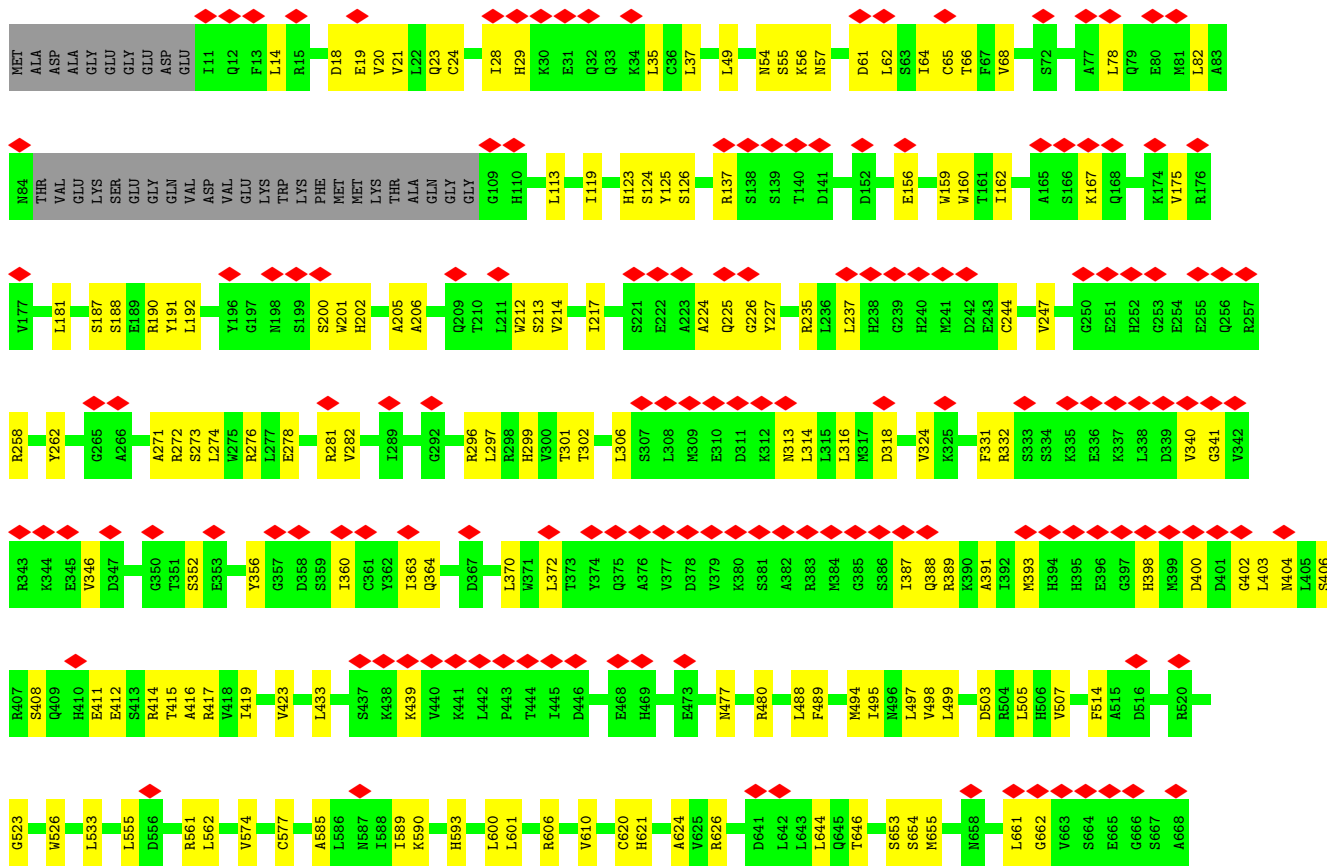








• Molecule 1: Ryanodine receptor 2

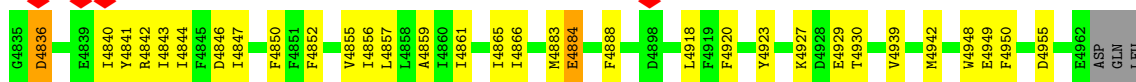






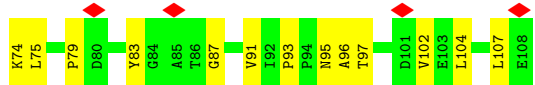
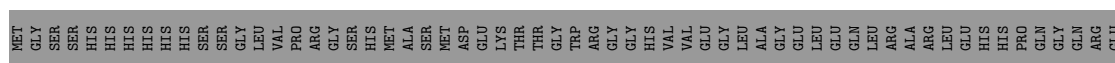
UNK	UNK	X3333	X3273	UNK	UNK	X3153	UNK	UNK	X2973	Y2947	ARG
UNK	UNK	X3334	X3274	UNK	UNK	X3154	UNK	UNK	X2974	H2948	ILE
UNK	UNK	X3335	X3275	UNK	UNK	X3155	UNK	UNK	X2975	H2949	GLU
UNK	UNK	X3336	X3276	UNK	UNK	X3156	UNK	UNK	X2976	I2850	THR
UNK	UNK	X3337	X3277	UNK	UNK	X3157	UNK	UNK	X2977	W2851	ARG
UNK	UNK	X3338	X3278	UNK	UNK	X3158	UNK	UNK	X2978	A2852	GLU
UNK	UNK	X3339	X3279	UNK	UNK	X3159	UNK	UNK	X2979	K2853	PRO
UNK	UNK	X3340	X3280	UNK	UNK	X3160	UNK	UNK	X2980	K2854	ASP
UNK	UNK	X3341	X3281	UNK	UNK	X3161	UNK	UNK	X2981	K2855	SER
UNK	UNK	X3342	X3282	UNK	UNK	X3162	UNK	UNK	X2982	K2856	MET
UNK	UNK	X3343	X3283	UNK	UNK	X3163	UNK	UNK	X2983	L2857	ALA
UNK	UNK	X3344	X3284	UNK	UNK	X3164	UNK	UNK	X2984	E2858	LEU
UNK	UNK	X3345	X3285	UNK	UNK	X3165	UNK	UNK	X2985	L2859	TYR
UNK	UNK	X3346	X3286	UNK	UNK	X3166	UNK	UNK	X2986	E2860	ASN
UNK	UNK	X3347	X3287	UNK	UNK	X3167	UNK	UNK	X2987	S2861	THR
UNK	UNK	X3348	X3288	UNK	UNK	X3168	UNK	UNK	X2988	K2862	ARG
UNK	UNK	X3349	X3289	UNK	UNK	X3169	UNK	UNK	X2989	G2863	ILE
UNK	UNK	X3350	X3290	UNK	UNK	X3170	UNK	UNK	X2990	G2864	SER
UNK	UNK	X3351	X3291	UNK	UNK	X3171	UNK	UNK	X2991	G2865	GLN
UNK	UNK	X3352	X3292	UNK	UNK	X3172	UNK	UNK	X2992	G2866	THR
UNK	UNK	X3353	X3293	UNK	UNK	X3173	UNK	UNK	X2993	H2867	GLN
UNK	UNK	X3354	X3294	UNK	UNK	X3174	UNK	UNK	X2994	P2868	VAL
UNK	UNK	X3355	X3295	UNK	UNK	X3175	UNK	UNK	X2995	L2869	SER
UNK	UNK	X3356	X3296	UNK	UNK	X3176	UNK	UNK	X2996	L2870	ILE
UNK	UNK	X3357	X3297	UNK	UNK	X3177	UNK	UNK	X2997	P2871	ALA
UNK	UNK	X3358	X3298	UNK	UNK	X3178	UNK	UNK	X2998	S2872	ALA
UNK	UNK	X3359	X3299	UNK	UNK	X3179	UNK	UNK	X2999	P2873	ALA
UNK	UNK	X3360	X3300	UNK	UNK	X3180	UNK	UNK	X3000	D2874	ALA
UNK	UNK	X3361	X3301	UNK	UNK	X3181	UNK	UNK	X3001	L2875	ALA
UNK	UNK	X3362	X3302	UNK	UNK	X3182	UNK	UNK	X3002	T2876	ALA
UNK	UNK	X3363	X3303	UNK	UNK	X3183	UNK	UNK	X3003	L2877	ALA
UNK	UNK	X3364	X3304	UNK	UNK	X3184	UNK	UNK	X3004	T2878	ALA
UNK	UNK	X3365	X3305	UNK	UNK	X3185	UNK	UNK	X3005	A2879	ALA
UNK	UNK	X3366	X3306	UNK	UNK	X3186	UNK	UNK	X3006	K2880	ALA
UNK	UNK	X3367	X3307	UNK	UNK	X3187	UNK	UNK	X3007	E2881	ALA
UNK	UNK	X3368	X3308	UNK	UNK	X3188	UNK	UNK	X3008	A2882	ALA
UNK	UNK	X3369	X3309	UNK	UNK	X3189	UNK	UNK	X3009	K2883	ALA
UNK	UNK	X3370	X3310	UNK	UNK	X3190	UNK	UNK	X3010	D2884	ALA
UNK	UNK	X3371	X3311	UNK	UNK	X3191	UNK	UNK	X3011	R2885	ALA
UNK	UNK	X3372	X3312	UNK	UNK	X3192	UNK	UNK	X3012	R2886	ALA
UNK	UNK	X3373	X3313	UNK	UNK	X3193	UNK	UNK	X3013	E2887	ALA
UNK	UNK	X3374	X3314	UNK	UNK	X3194	UNK	UNK	X3014	K2888	ALA
UNK	UNK	X3375	X3315	UNK	UNK	X3195	UNK	UNK	X3015	A2889	ALA
UNK	UNK	X3376	X3316	UNK	UNK	X3196	UNK	UNK	X3016	Q2890	ALA
UNK	UNK	X3377	X3317	UNK	UNK	X3197	UNK	UNK	X3017	D2891	ALA
UNK	UNK	X3378	X3318	UNK	UNK	X3198	UNK	UNK	X3018	F2892	ALA
UNK	UNK	X3379	X3319	UNK	UNK	X3199	UNK	UNK	X3019	I2893	ALA
UNK	UNK	X3380	X3320	UNK	UNK	X3200	UNK	UNK	X3020	K2894	ALA
UNK	UNK	X3381	X3321	UNK	UNK	X3201	UNK	UNK	X3021	P2895	ALA
UNK	UNK	X3382	X3322	UNK	UNK	X3202	UNK	UNK	X3022	F2896	ALA
UNK	UNK	X3383	X3323	UNK	UNK	X3203	UNK	UNK	X3023	Q2897	ALA
UNK	UNK	X3384	X3324	UNK	UNK	X3204	UNK	UNK	X3024	L2898	ALA
UNK	UNK	X3385	X3325	UNK	UNK	X3205	UNK	UNK	X3025	S2899	ALA
UNK	UNK	X3386	X3326	UNK	UNK	X3206	UNK	UNK	X3026	G2900	ALA
UNK	UNK	X3387	X3327	UNK	UNK	X3207	UNK	UNK	X3027	Y2901	ALA
UNK	UNK	X3388	X3328	UNK	UNK	X3208	UNK	UNK	X3028	V2902	ALA
UNK	UNK	X3389	X3329	UNK	UNK	X3209	UNK	UNK	X3029	S2903	ALA
UNK	UNK	X3390	X3330	UNK	UNK	UNK	UNK	UNK	UNK	R2904	ALA
UNK	UNK	X3391	X3331	UNK	UNK	X3152	UNK	UNK	UNK	G2905	ALA
UNK	UNK	X3392	X3332	UNK	UNK	UNK	UNK	UNK	UNK	PHE	ALA



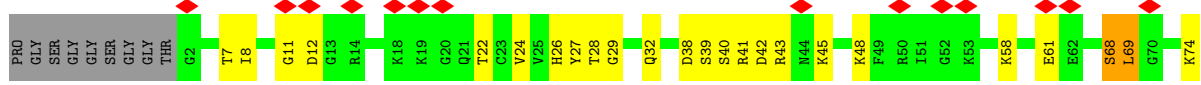


ASN

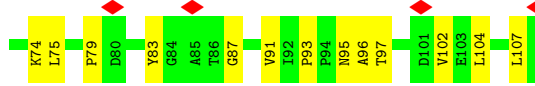
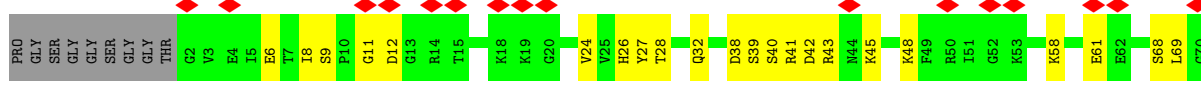
• Molecule 2: Peptidyl-prolyl cis-trans isomerase FKBP1B



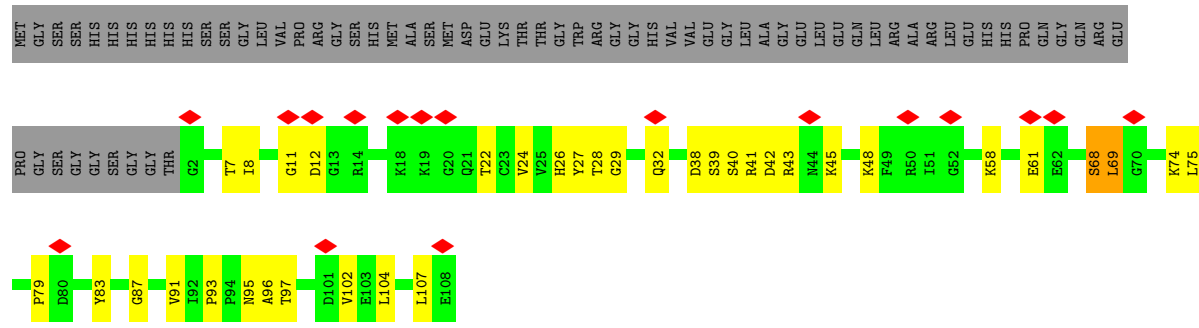
• Molecule 2: Peptidyl-prolyl cis-trans isomerase FKBP1B



• Molecule 2: Peptidyl-prolyl cis-trans isomerase FKBP1B



● Molecule 2: Peptidyl-prolyl cis-trans isomerase FKBP1B



## 4 Experimental information

Property	Value	Source
EM reconstruction method	SINGLE PARTICLE	Depositor
Imposed symmetry	POINT, Not provided	
Number of particles used	42375	Depositor
Resolution determination method	FSC 0.143 CUT-OFF	Depositor
CTF correction method	PHASE FLIPPING AND AMPLITUDE CORRECTION	Depositor
Microscope	FEI TITAN KRIOS	Depositor
Voltage (kV)	300	Depositor
Electron dose ( $e^-/\text{\AA}^2$ )	60	Depositor
Minimum defocus (nm)	Not provided	
Maximum defocus (nm)	Not provided	
Magnification	Not provided	
Image detector	GATAN K3 (6k x 4k)	Depositor
Maximum map value	0.165	Depositor
Minimum map value	-0.096	Depositor
Average map value	-0.000	Depositor
Map value standard deviation	0.006	Depositor
Recommended contour level	0.021	Depositor
Map size (Å)	421.25998, 421.25998, 421.25998	wwPDB
Map dimensions	340, 340, 340	wwPDB
Map angles (°)	90.0, 90.0, 90.0	wwPDB
Pixel spacing (Å)	1.239, 1.239, 1.239	Depositor

## 5 Model quality

### 5.1 Standard geometry

Bond lengths and bond angles in the following residue types are not validated in this section: CA, ZN

The Z score for a bond length (or angle) is the number of standard deviations the observed value is removed from the expected value. A bond length (or angle) with  $|Z| > 5$  is considered an outlier worth inspection. RMSZ is the root-mean-square of all Z scores of the bond lengths (or angles).

Mol	Chain	Bond lengths		Bond angles	
		RMSZ	# Z  >5	RMSZ	# Z  >5
1	A	0.14	0/26573	0.38	7/35881 (0.0%)
1	B	0.14	0/26573	0.38	7/35881 (0.0%)
1	C	0.14	0/26573	0.38	7/35881 (0.0%)
1	D	0.14	0/26573	0.38	7/35881 (0.0%)
2	G	0.13	0/835	0.38	0/1123
2	H	0.13	0/835	0.38	0/1123
2	I	0.13	0/835	0.38	0/1123
2	J	0.13	0/835	0.38	0/1123
All	All	0.14	0/109632	0.38	28/148016 (0.0%)

There are no bond length outliers.

The worst 5 of 28 bond angle outliers are listed below:

Mol	Chain	Res	Type	Atoms	Z	Observed(°)	Ideal(°)
1	C	1170	GLU	CA-CB-CG	6.12	126.33	114.10
1	D	1170	GLU	CA-CB-CG	6.11	126.33	114.10
1	A	1170	GLU	CA-CB-CG	6.09	126.29	114.10
1	B	1170	GLU	CA-CB-CG	6.09	126.28	114.10
1	A	1838	GLU	CA-CB-CG	5.87	125.85	114.10

There are no chirality outliers.

There are no planarity outliers.

### 5.2 Too-close contacts

In the following table, the Non-H and H(model) columns list the number of non-hydrogen atoms and hydrogen atoms in the chain respectively. The H(added) column lists the number of hydrogen atoms added and optimized by MolProbity. The Clashes column lists the number of clashes within the asymmetric unit, whereas Symm-Clashes lists symmetry-related clashes.

Mol	Chain	Non-H	H(model)	H(added)	Clashes	Symm-Clashes
1	A	29688	0	26383	585	0
1	B	29688	0	26383	586	0
1	C	29688	0	26383	583	0
1	D	29688	0	26383	594	0
2	G	819	0	821	23	0
2	H	819	0	821	23	0
2	I	819	0	821	25	0
2	J	819	0	821	23	0
3	A	1	0	0	0	0
3	B	1	0	0	0	0
3	C	1	0	0	0	0
3	D	1	0	0	0	0
4	A	1	0	0	0	0
4	B	1	0	0	0	0
4	C	1	0	0	0	0
4	D	1	0	0	0	0
All	All	122036	0	108816	2398	0

The all-atom clashscore is defined as the number of clashes found per 1000 atoms (including hydrogen atoms). The all-atom clashscore for this structure is 10.

The worst 5 of 2398 close contacts within the same asymmetric unit are listed below, sorted by their clash magnitude.

Atom-1	Atom-2	Interatomic distance (Å)	Clash overlap (Å)
1:A:1687:LEU:O	1:A:1691:GLU:HB3	1.78	0.84
1:B:1687:LEU:O	1:B:1691:GLU:HB3	1.78	0.84
1:A:1170:GLU:OE1	1:A:1170:GLU:N	2.11	0.84
1:C:1687:LEU:O	1:C:1691:GLU:HB3	1.78	0.84
1:D:1687:LEU:O	1:D:1691:GLU:HB3	1.78	0.84

There are no symmetry-related clashes.

## 5.3 Torsion angles [i](#)

### 5.3.1 Protein backbone [i](#)

There are no protein backbone outliers to report in this entry.

### 5.3.2 Protein sidechains [i](#)

In the following table, the Percentiles column shows the percent sidechain outliers of the chain as a percentile score with respect to all PDB entries followed by that with respect to all EM entries.

The Analysed column shows the number of residues for which the sidechain conformation was analysed, and the total number of residues.

Mol	Chain	Analysed	Rotameric	Outliers	Percentiles	
1	A	2827/3387 (84%)	2688 (95%)	139 (5%)	22	48
1	B	2827/3387 (84%)	2687 (95%)	140 (5%)	22	48
1	C	1938/3387 (57%)	1832 (94%)	106 (6%)	19	46
1	D	1728/3387 (51%)	1656 (96%)	72 (4%)	26	52
2	G	88/140 (63%)	84 (96%)	4 (4%)	24	50
2	H	88/140 (63%)	84 (96%)	4 (4%)	24	50
2	J	88/140 (63%)	84 (96%)	4 (4%)	24	50
All	All	9584/13968 (69%)	9115 (95%)	469 (5%)	24	48

5 of 469 residues with a non-rotameric sidechain are listed below:

Mol	Chain	Res	Type
1	B	2408	ILE
1	D	3885	SER
2	H	69	LEU
1	D	3620	LEU
1	D	1060	TYR

Sometimes sidechains can be flipped to improve hydrogen bonding and reduce clashes. 5 of 204 such sidechains are listed below:

Mol	Chain	Res	Type
1	B	3959	GLN
1	C	650	ASN
1	D	4786	ASN
1	B	4491	ASN
1	C	150	GLN

### 5.3.3 RNA [i](#)

There are no RNA molecules in this entry.

## 5.4 Non-standard residues in protein, DNA, RNA chains [i](#)

There are no non-standard protein/DNA/RNA residues in this entry.

## 5.5 Carbohydrates [i](#)

There are no oligosaccharides in this entry.

## 5.6 Ligand geometry [i](#)

Of 8 ligands modelled in this entry, 8 are monoatomic - leaving 0 for Mogul analysis.

There are no bond length outliers.

There are no bond angle outliers.

There are no chirality outliers.

There are no torsion outliers.

There are no ring outliers.

No monomer is involved in short contacts.

## 5.7 Other polymers [i](#)

There are no such residues in this entry.

## 5.8 Polymer linkage issues [i](#)

There are no chain breaks in this entry.

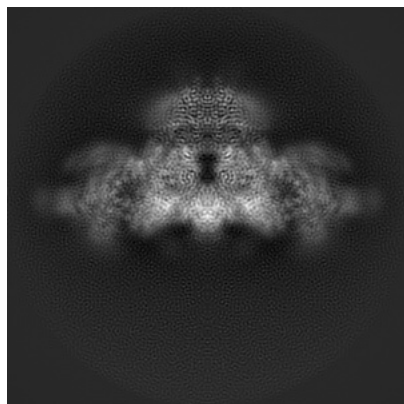
## 6 Map visualisation [i](#)

This section contains visualisations of the EMDB entry EMD-33939. These allow visual inspection of the internal detail of the map and identification of artifacts.

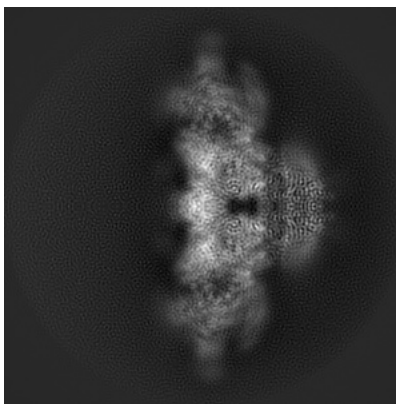
Images derived from a raw map, generated by summing the deposited half-maps, are presented below the corresponding image components of the primary map to allow further visual inspection and comparison with those of the primary map.

### 6.1 Orthogonal projections [i](#)

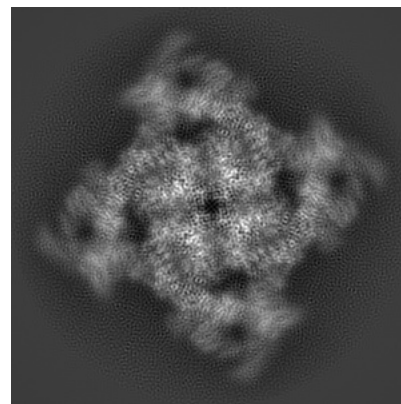
#### 6.1.1 Primary map



X

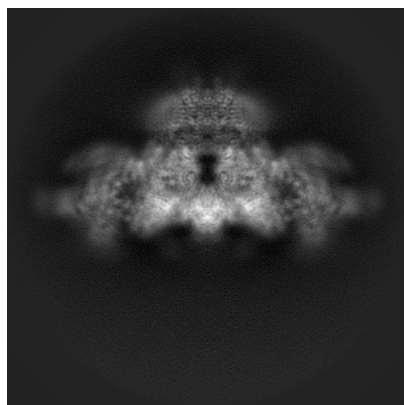


Y

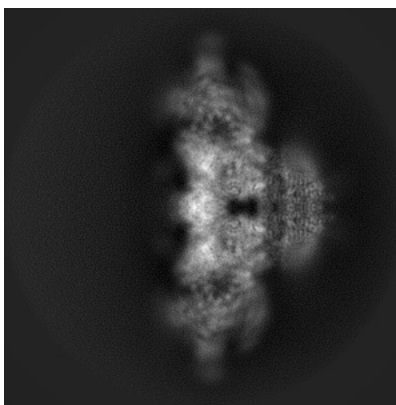


Z

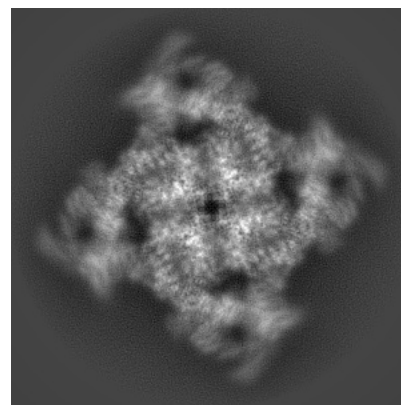
#### 6.1.2 Raw map



X



Y

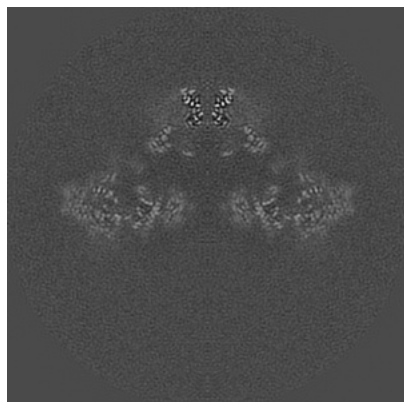


Z

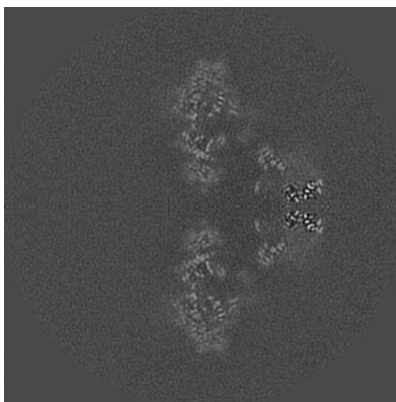
The images above show the map projected in three orthogonal directions.

## 6.2 Central slices [i](#)

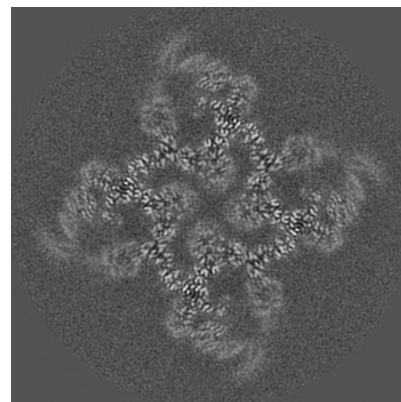
### 6.2.1 Primary map



X Index: 170

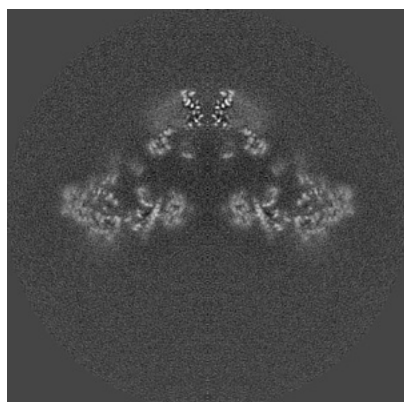


Y Index: 170

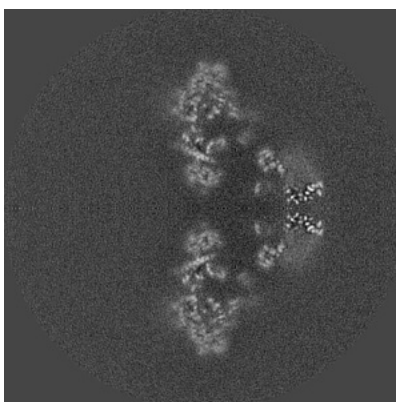


Z Index: 170

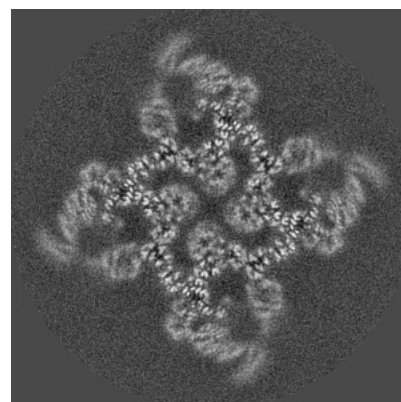
### 6.2.2 Raw map



X Index: 170



Y Index: 170

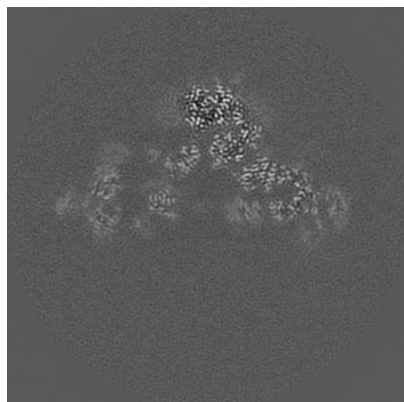


Z Index: 170

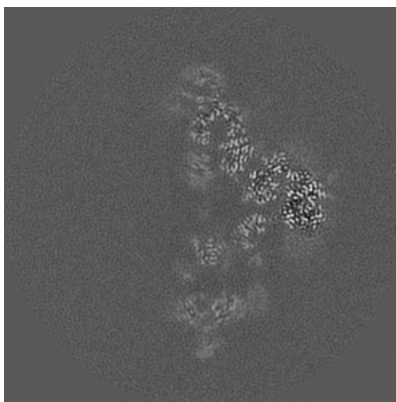
The images above show central slices of the map in three orthogonal directions.

## 6.3 Largest variance slices [i](#)

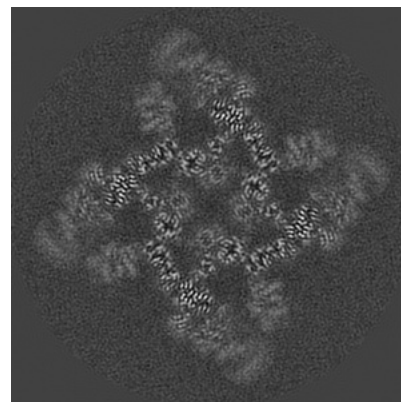
### 6.3.1 Primary map



X Index: 182

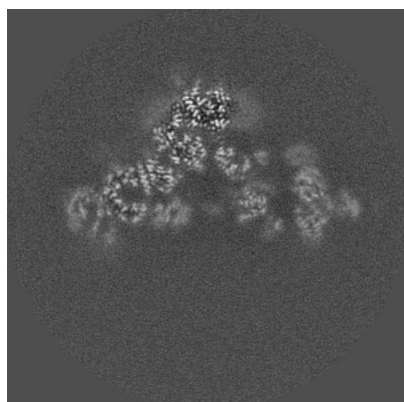


Y Index: 158

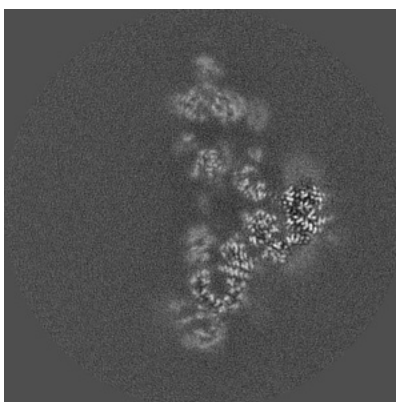


Z Index: 174

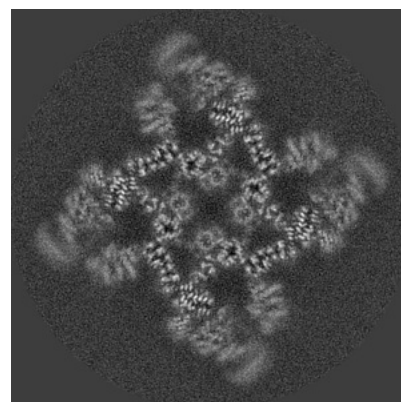
### 6.3.2 Raw map



X Index: 158



Y Index: 182

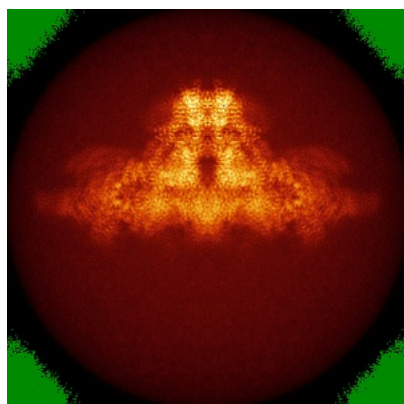


Z Index: 174

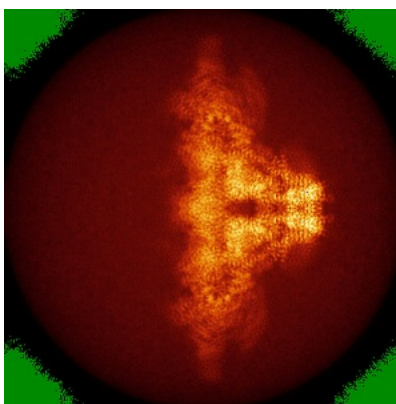
The images above show the largest variance slices of the map in three orthogonal directions.

## 6.4 Orthogonal standard-deviation projections (False-color) [i](#)

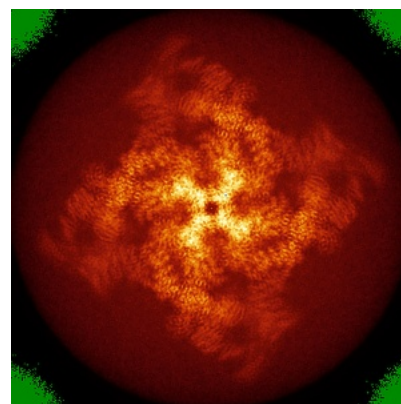
### 6.4.1 Primary map



X

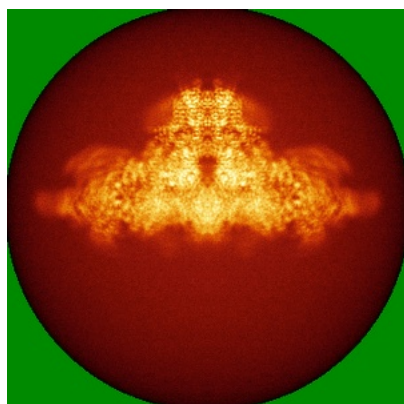


Y

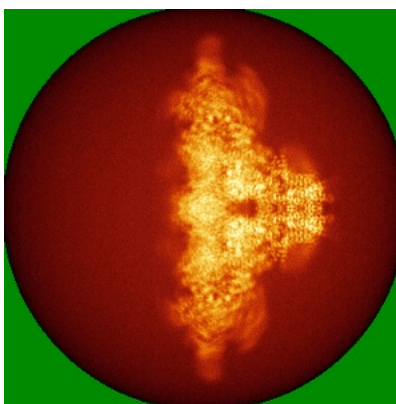


Z

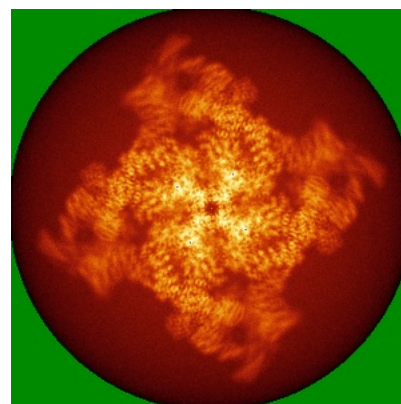
### 6.4.2 Raw map



X



Y

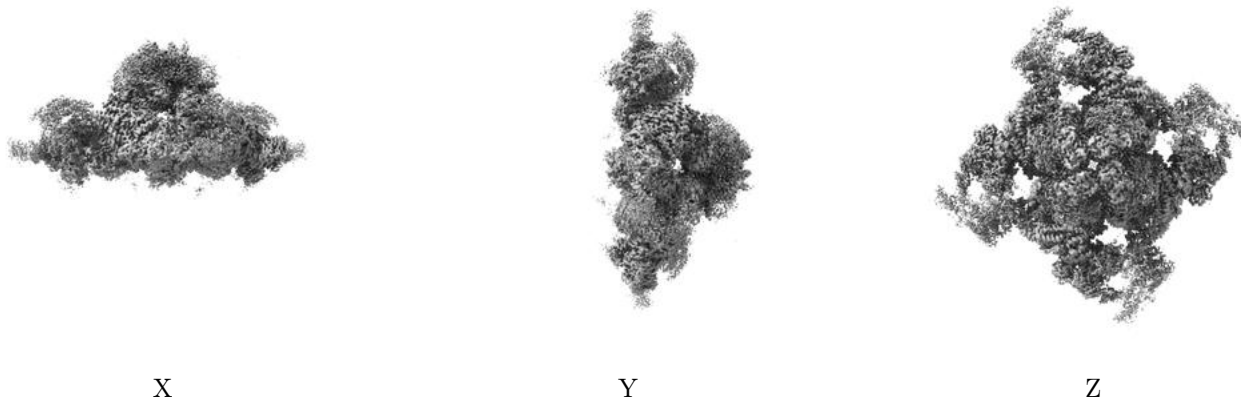


Z

The images above show the map standard deviation projections with false color in three orthogonal directions. Minimum values are shown in green, max in blue, and dark to light orange shades represent small to large values respectively.

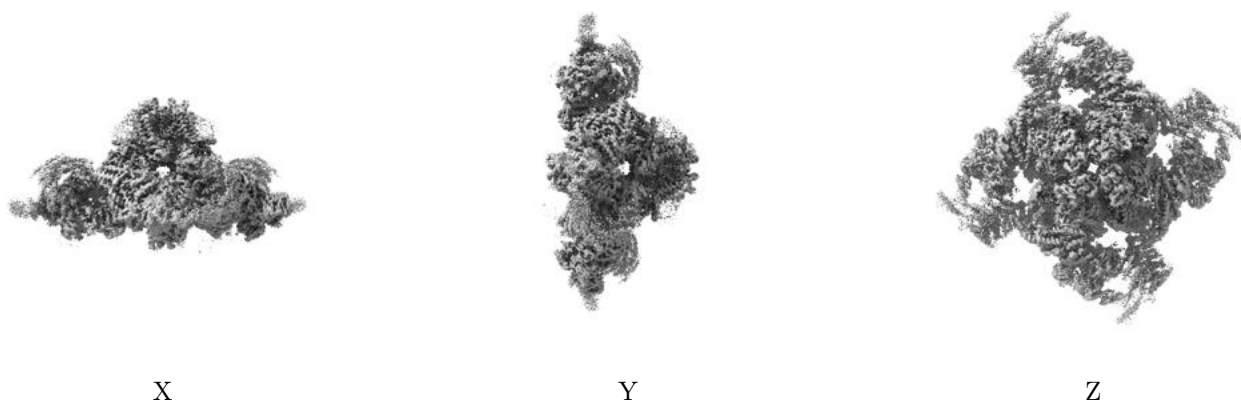
## 6.5 Orthogonal surface views [i](#)

### 6.5.1 Primary map



The images above show the 3D surface view of the map at the recommended contour level 0.021. These images, in conjunction with the slice images, may facilitate assessment of whether an appropriate contour level has been provided.

### 6.5.2 Raw map



These images show the 3D surface of the raw map. The raw map's contour level was selected so that its surface encloses the same volume as the primary map does at its recommended contour level.

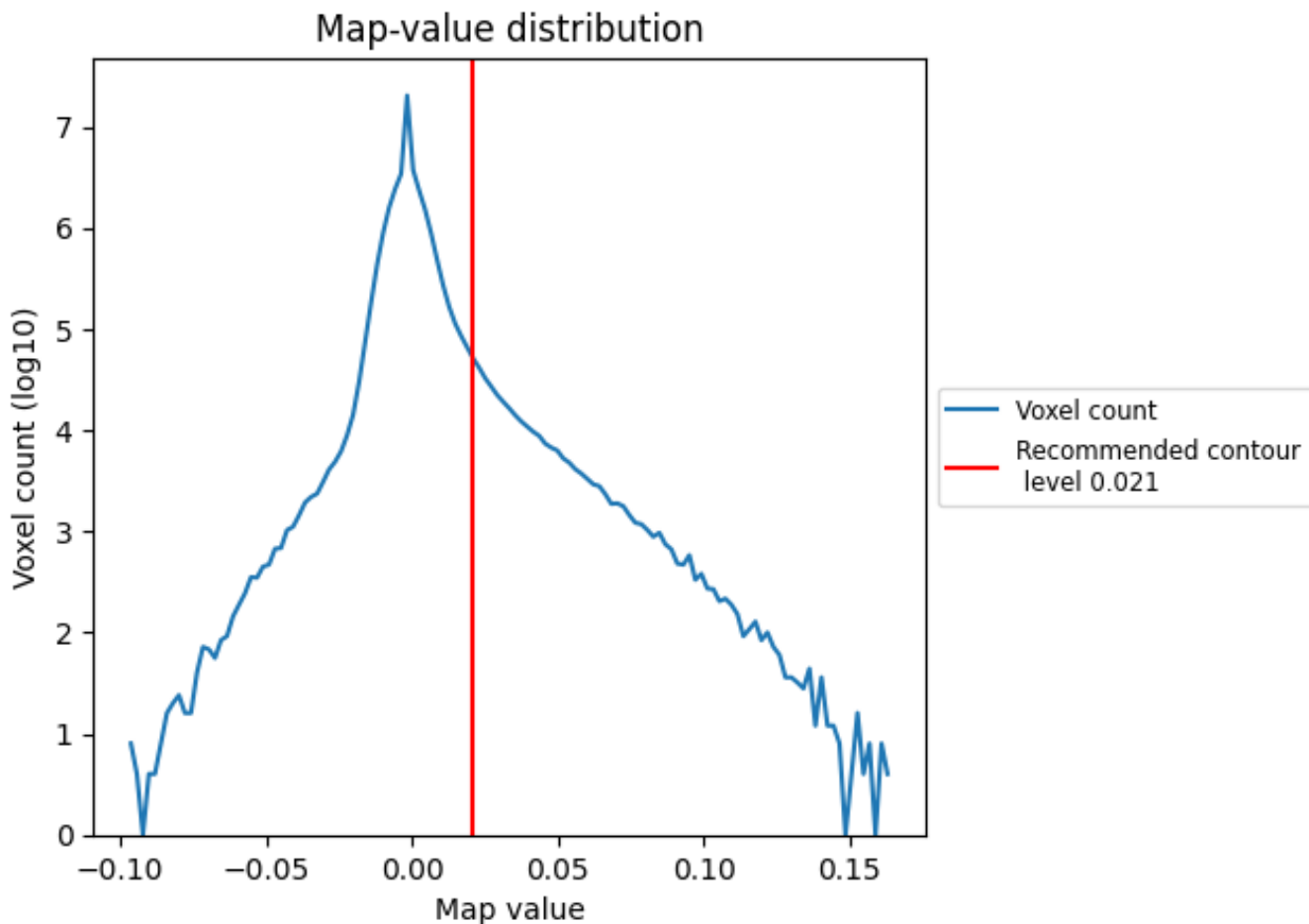
## 6.6 Mask visualisation [i](#)

This section was not generated. No masks/segmentation were deposited.

## 7 Map analysis [i](#)

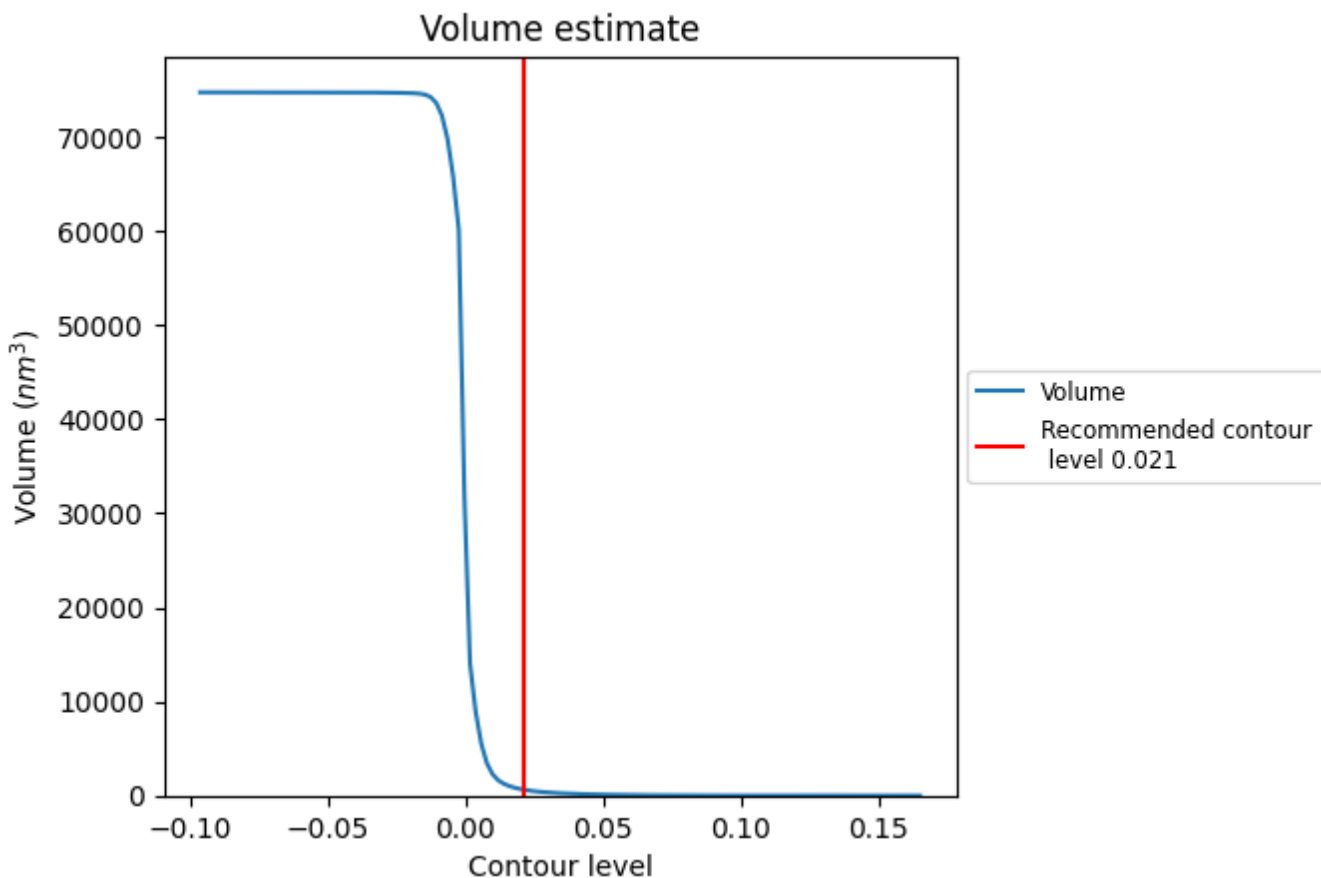
This section contains the results of statistical analysis of the map.

### 7.1 Map-value distribution [i](#)



The map-value distribution is plotted in 128 intervals along the x-axis. The y-axis is logarithmic. A spike in this graph at zero usually indicates that the volume has been masked.

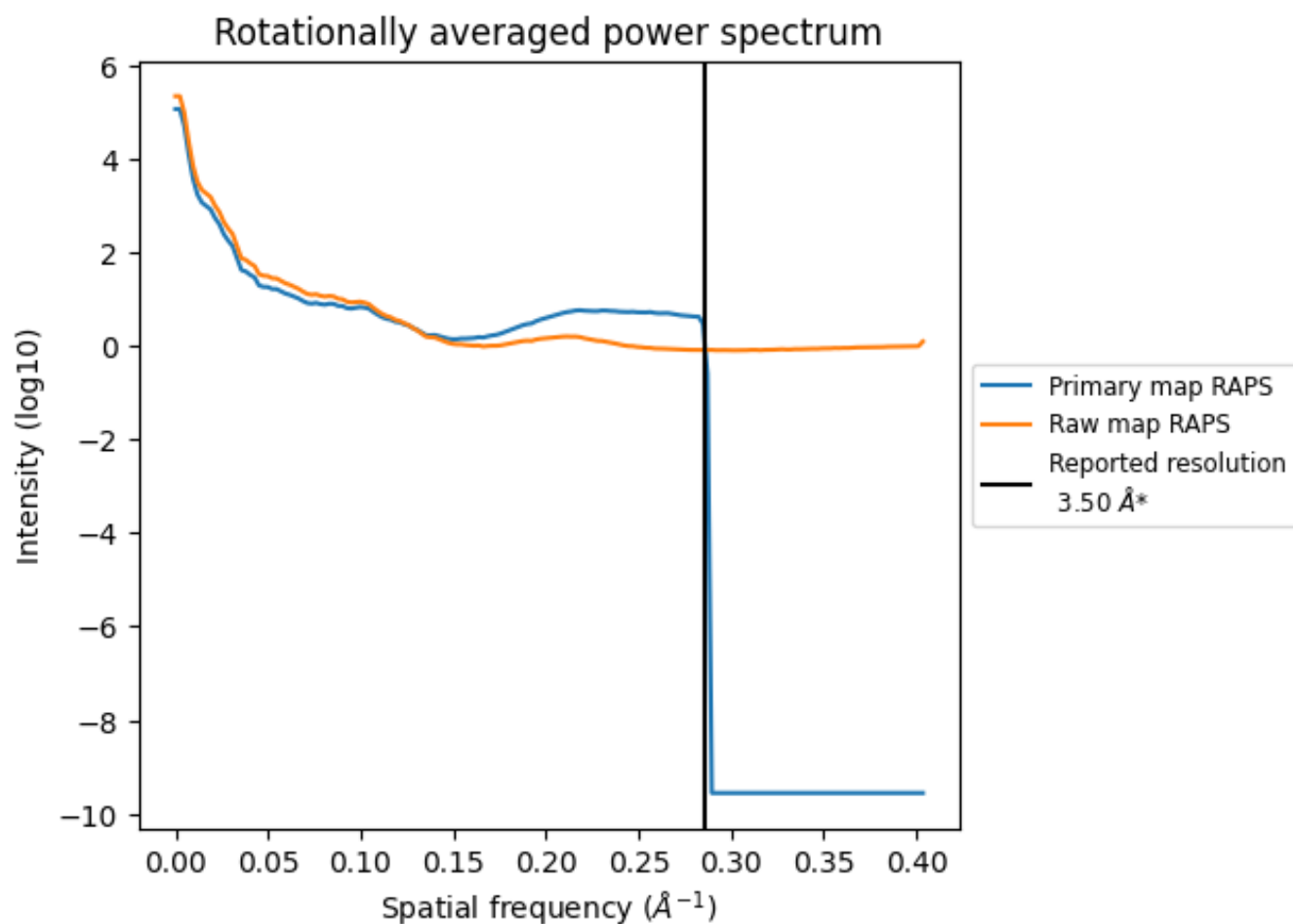
## 7.2 Volume estimate [i](#)



The volume at the recommended contour level is 638 nm<sup>3</sup>; this corresponds to an approximate mass of 576 kDa.

The volume estimate graph shows how the enclosed volume varies with the contour level. The recommended contour level is shown as a vertical line and the intersection between the line and the curve gives the volume of the enclosed surface at the given level.

### 7.3 Rotationally averaged power spectrum i

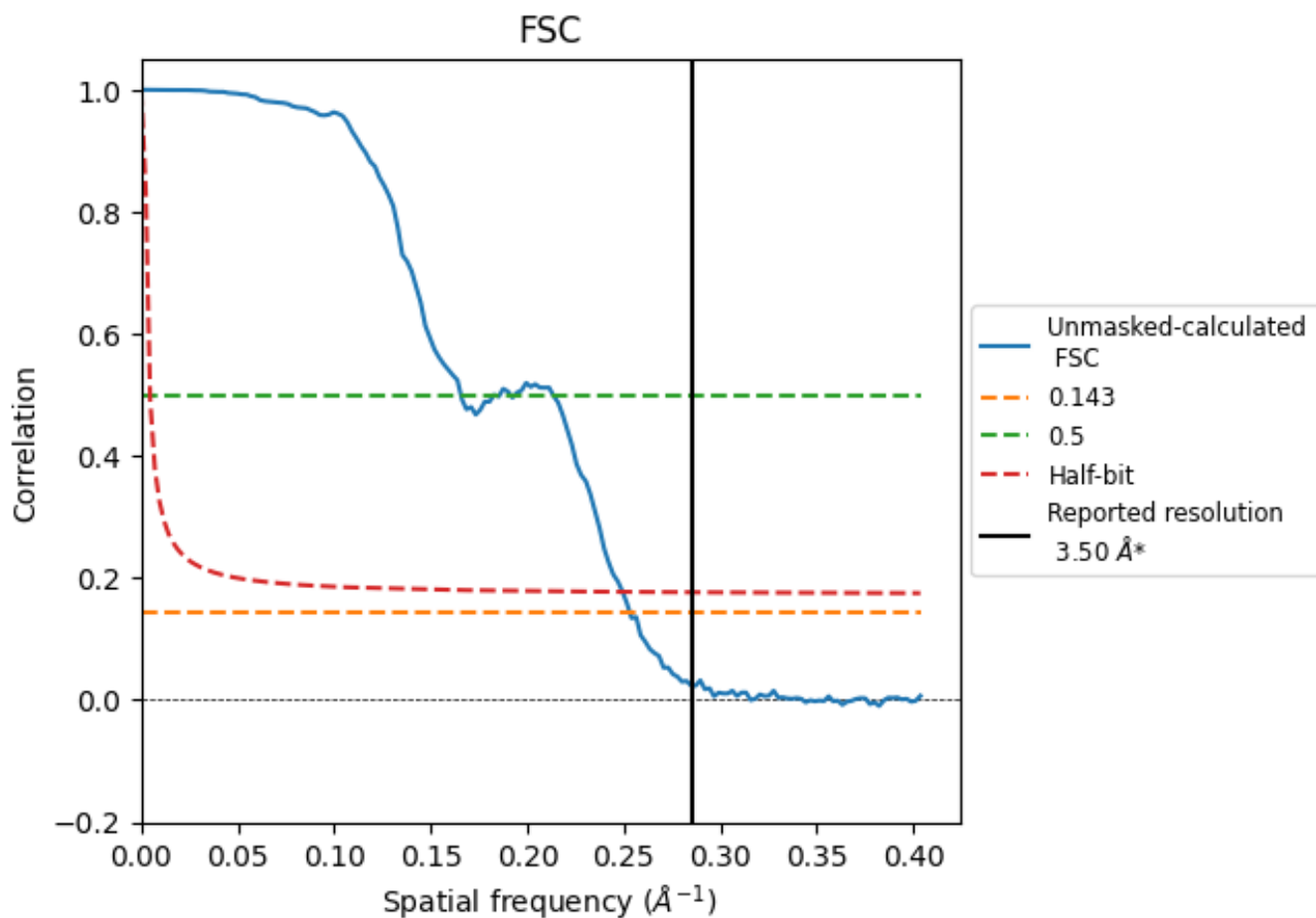


\*Reported resolution corresponds to spatial frequency of 0.286 Å<sup>-1</sup>

## 8 Fourier-Shell correlation [i](#)

Fourier-Shell Correlation (FSC) is the most commonly used method to estimate the resolution of single-particle and subtomogram-averaged maps. The shape of the curve depends on the imposed symmetry, mask and whether or not the two 3D reconstructions used were processed from a common reference. The reported resolution is shown as a black line. A curve is displayed for the half-bit criterion in addition to lines showing the 0.143 gold standard cut-off and 0.5 cut-off.

### 8.1 FSC [i](#)



\*Reported resolution corresponds to spatial frequency of 0.286 Å<sup>-1</sup>

## 8.2 Resolution estimates [i](#)

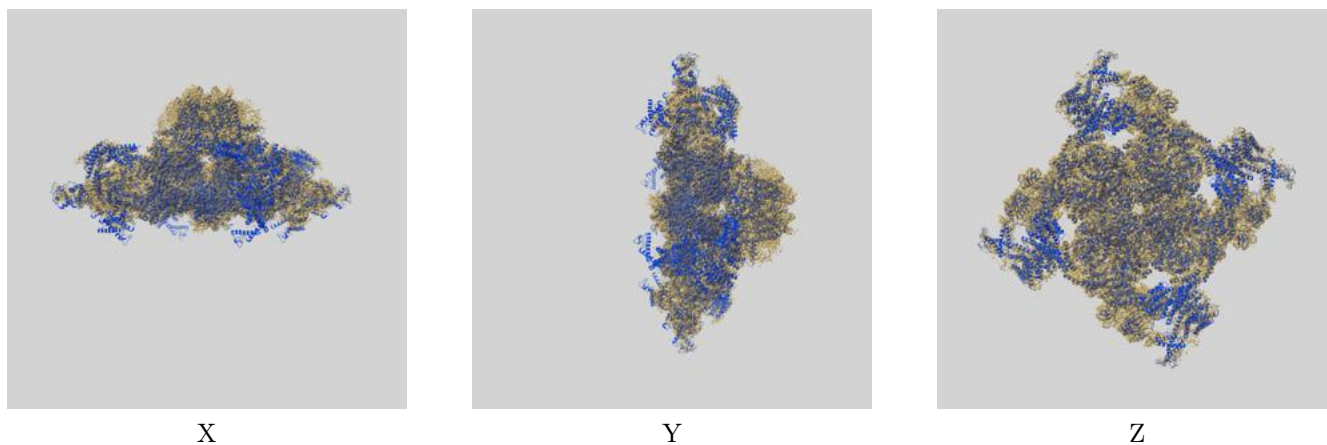
Resolution estimate (Å)	Estimation criterion (FSC cut-off)		
	0.143	0.5	Half-bit
Reported by author	3.50	-	-
Author-provided FSC curve	-	-	-
Unmasked-calculated*	3.95	6.04	4.01

\*Resolution estimate based on FSC curve calculated by comparison of deposited half-maps. The value from deposited half-maps intersecting FSC 0.143 CUT-OFF 3.95 differs from the reported value 3.5 by more than 10 %

## 9 Map-model fit [i](#)

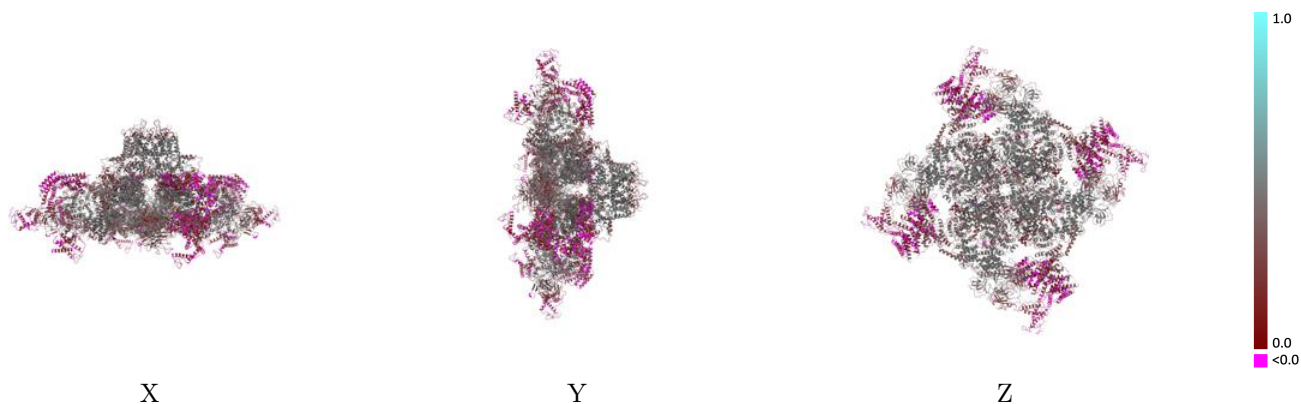
This section contains information regarding the fit between EMDB map EMD-33939 and PDB model 7VMP. Per-residue inclusion information can be found in section [3](#) on page [12](#).

### 9.1 Map-model overlay [i](#)



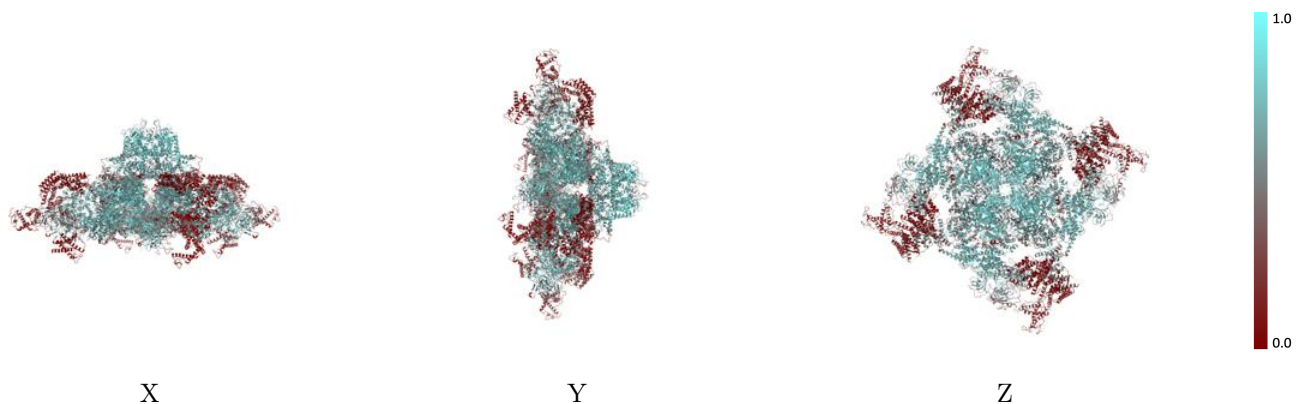
The images above show the 3D surface view of the map at the recommended contour level 0.021 at 50% transparency in yellow overlaid with a ribbon representation of the model coloured in blue. These images allow for the visual assessment of the quality of fit between the atomic model and the map.

## 9.2 Q-score mapped to coordinate model [i](#)



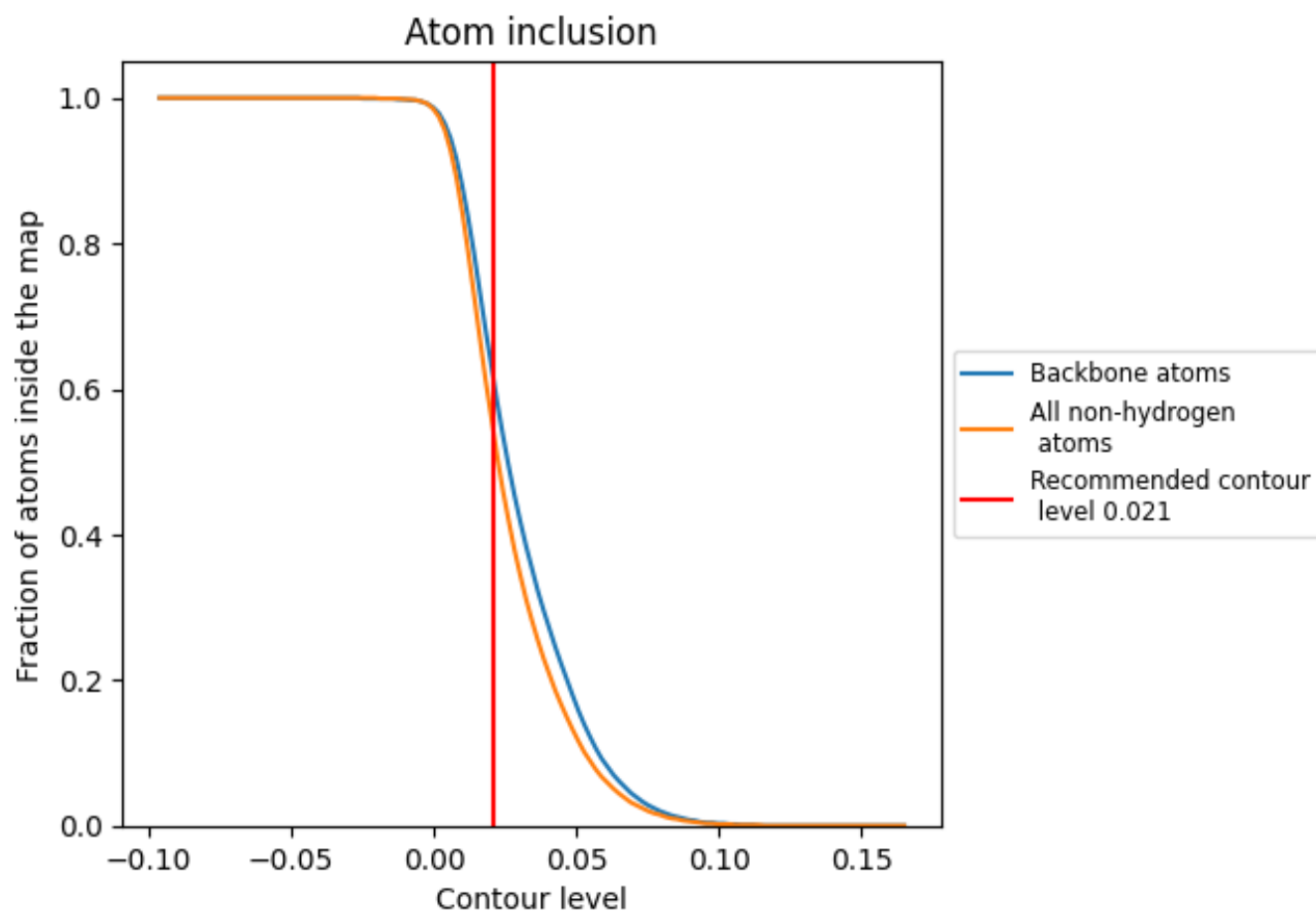
The images above show the model with each residue coloured according to its Q-score. This shows their resolvability in the map with higher Q-score values reflecting better resolvability. Please note: Q-score is calculating the resolvability of atoms, and thus high values are only expected at resolutions at which atoms can be resolved. Low Q-score values may therefore be expected for many entries.

## 9.3 Atom inclusion mapped to coordinate model [i](#)



The images above show the model with each residue coloured according to its atom inclusion. This shows to what extent they are inside the map at the recommended contour level (0.021).



















## 9.4 Atom inclusion [i](#)



At the recommended contour level, 61% of all backbone atoms, 54% of all non-hydrogen atoms, are inside the map.

## 9.5 Map-model fit summary

The table lists the average atom inclusion at the recommended contour level (0.021) and Q-score for the entire model and for each chain.

Chain	Atom inclusion	Q-score
All	 0.5370	 0.3360
A	 0.5360	 0.3340
B	 0.5370	 0.3380
C	 0.5330	 0.3330
D	 0.5350	 0.3310
G	 0.6070	 0.4090
H	 0.6100	 0.4110
I	 0.6050	 0.4090
J	 0.6130	 0.4090

