



Full wwPDB X-ray Structure Validation Report ⓘ

Mar 5, 2026 – 02:03 AM UTC

PDB ID : 2VSX / pdb_00002vsx
Title : Crystal Structure of a Translation Initiation Complex
Authors : Schutz, P.; Bumann, M.; Oberholzer, A.E.; Bieniossek, C.; Altmann, M.; Trachsel, H.; Baumann, U.
Deposited on : 2008-04-30
Resolution : 2.80 Å(reported)

This is a Full wwPDB X-ray Structure Validation Report for a publicly released PDB entry.

We welcome your comments at validation@mail.wwpdb.org

A user guide is available at

<https://www.wwpdb.org/validation/2017/XrayValidationReportHelp>

with specific help available everywhere you see the ⓘ symbol.

The types of validation reports are described at

<http://www.wwpdb.org/validation/2017/FAQs#types>.

The following versions of software and data (see [references ⓘ](#)) were used in the production of this report:

MolProbity : 4-5-2 with Phenix2.0
Mogul : 2022.3.0, CSD as543be (2022)
Xtrriage (Phenix) : 2.0
EDS : 3.0
Buster-report : wwPDB partial adaption of 1.1.7 (2018)
Percentile statistics : 20250101.v01 (using entries in the PDB archive January 1st 2025)
CCP4 : 9.0.010 (Gargrove)
Density-Fitness : 1.0.12
Ideal geometry (proteins) : Engh & Huber (2001)
Ideal geometry (DNA, RNA) : Parkinson et al. (1996)
Validation Pipeline (wwPDB-VP) : 2.49

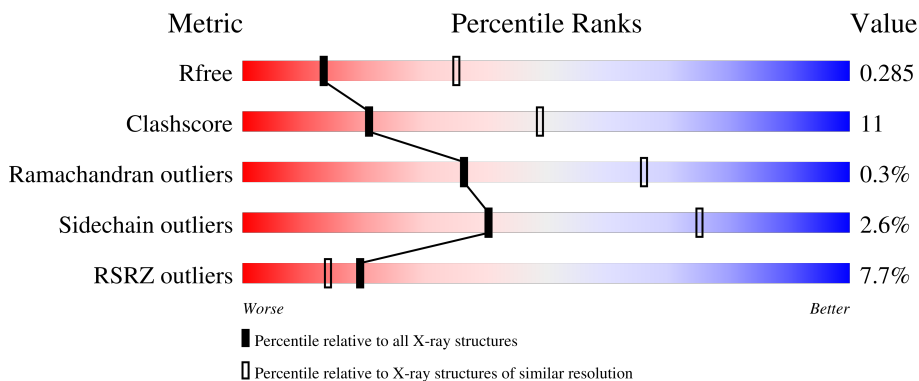
1 Overall quality at a glance

The following experimental techniques were used to determine the structure:

X-RAY DIFFRACTION

The reported resolution of this entry is 2.80 Å.

Percentile scores (ranging between 0-100) for global validation metrics of the entry are shown in the following graphic. The table shows the number of entries on which the scores are based.



Metric	Whole archive (#Entries)	Similar resolution (#Entries, resolution range(Å))
R_{free}	180053	3866 (2.80-2.80)
Clashscore	190562	4276 (2.80-2.80)
Ramachandran outliers	187476	4196 (2.80-2.80)
Sidechain outliers	187428	4198 (2.80-2.80)
RSRZ outliers	180081	3869 (2.80-2.80)

The table below summarises the geometric issues observed across the polymeric chains and their fit to the electron density. The red, orange, yellow and green segments of the lower bar indicate the fraction of residues that contain outliers for ≥ 3 , 2, 1 and 0 types of geometric quality criteria respectively. A grey segment represents the fraction of residues that are not modelled. The numeric value for each fraction is indicated below the corresponding segment, with a dot representing fractions $\leq 5\%$. The upper red bar (where present) indicates the fraction of residues that have poor fit to the electron density. The numeric value is given above the bar.

Mol	Chain	Length	Quality of chain
1	A	395	
1	B	395	
2	E	284	
2	F	284	

2 Entry composition [i](#)

There are 3 unique types of molecules in this entry. The entry contains 9623 atoms, of which 0 are hydrogens and 0 are deuteriums.

In the tables below, the ZeroOcc column contains the number of atoms modelled with zero occupancy, the AltConf column contains the number of residues with at least one atom in alternate conformation and the Trace column contains the number of residues modelled with at most 2 atoms.

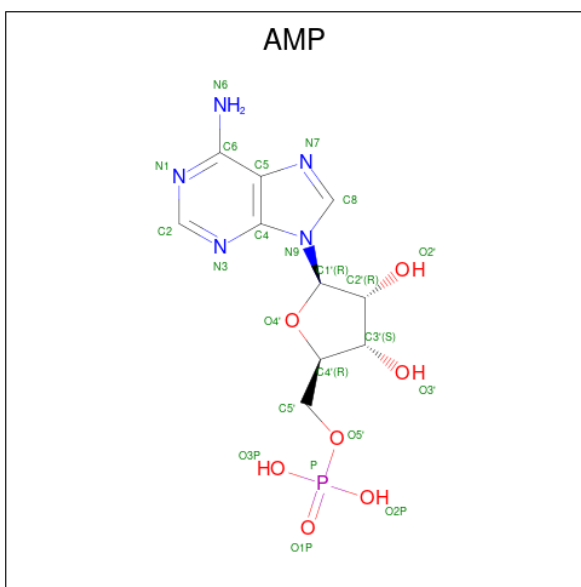
- Molecule 1 is a protein called ATP-DEPENDENT RNA HELICASE EIF4A.

Mol	Chain	Residues	Atoms					ZeroOcc	AltConf	Trace
			Total	C	N	O	S			
1	A	366	Total 2907	C 1846	N 490	O 557	S 14	0	0	0
1	B	366	Total 2907	C 1846	N 490	O 557	S 14	0	0	0

- Molecule 2 is a protein called EUKARYOTIC INITIATION FACTOR 4F SUBUNIT P150.

Mol	Chain	Residues	Atoms					ZeroOcc	AltConf	Trace
			Total	C	N	O	S			
2	E	240	Total 1892	C 1208	N 320	O 354	S 10	0	0	0
2	F	237	Total 1871	C 1197	N 316	O 348	S 10	0	0	0

- Molecule 3 is ADENOSINE MONOPHOSPHATE (CCD ID: AMP) (formula: C₁₀H₁₄N₅O₇P).

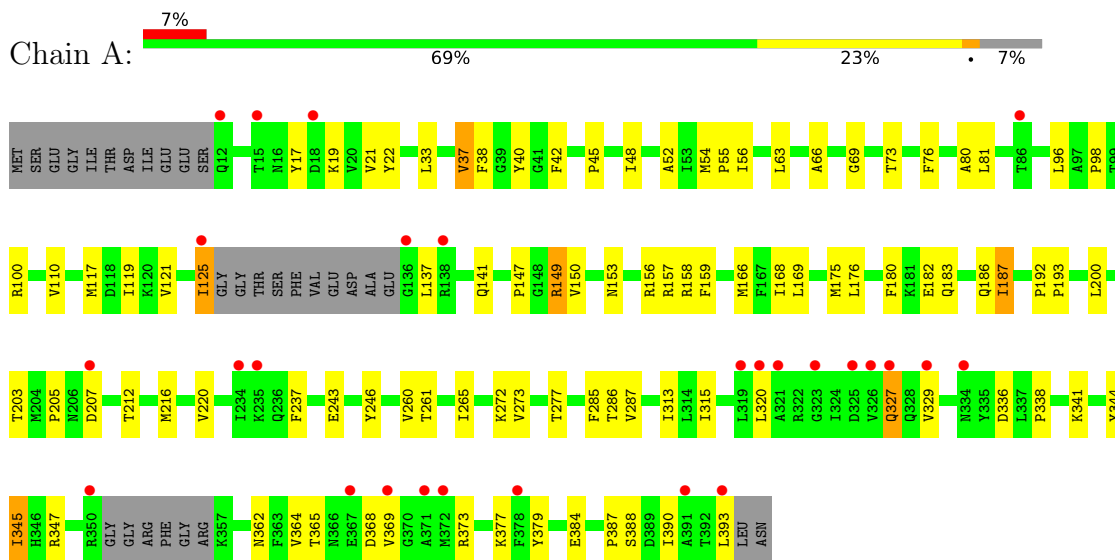


Mol	Chain	Residues	Atoms					ZeroOcc	AltConf
3	A	1	Total	C	N	O	P	0	0
			23	10	5	7	1		
3	B	1	Total	C	N	O	P	0	0
			23	10	5	7	1		

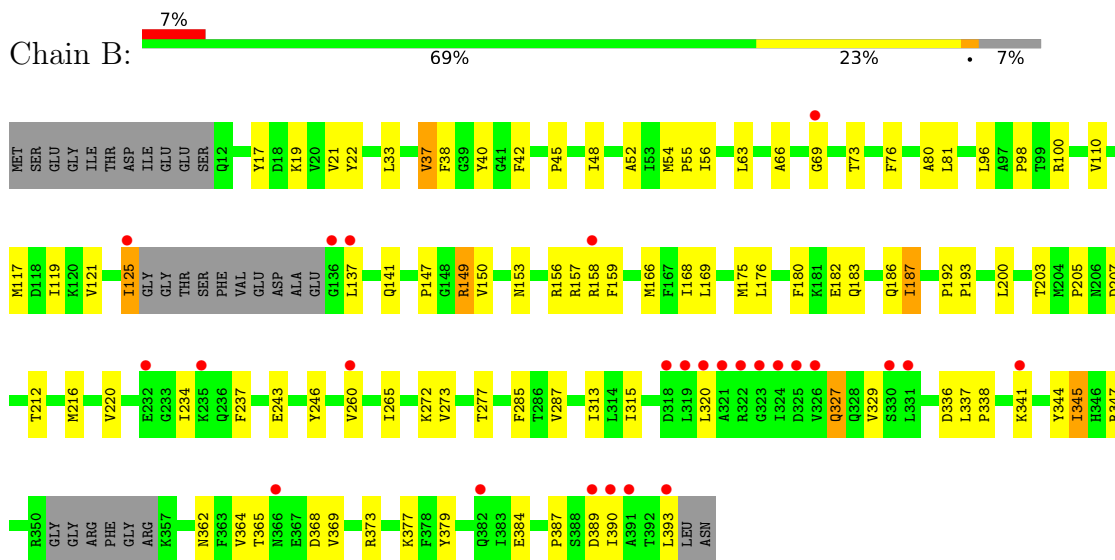
3 Residue-property plots i

These plots are drawn for all protein, RNA, DNA and oligosaccharide chains in the entry. The first graphic for a chain summarises the proportions of the various outlier classes displayed in the second graphic. The second graphic shows the sequence view annotated by issues in geometry and electron density. Residues are color-coded according to the number of geometric quality criteria for which they contain at least one outlier: green = 0, yellow = 1, orange = 2 and red = 3 or more. A red dot above a residue indicates a poor fit to the electron density ($RSRZ > 2$). Stretches of 2 or more consecutive residues without any outlier are shown as a green connector. Residues present in the sample, but not in the model, are shown in grey.

- Molecule 1: ATP-DEPENDENT RNA HELICASE EIF4A

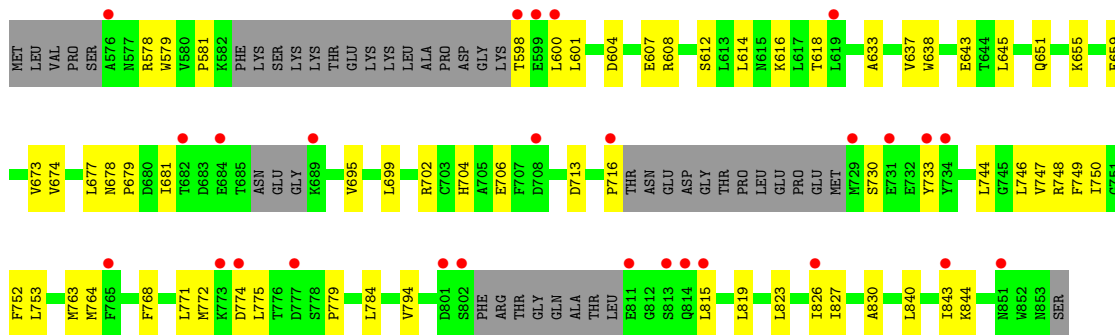


- Molecule 1: ATP-DEPENDENT RNA HELICASE EIF4A

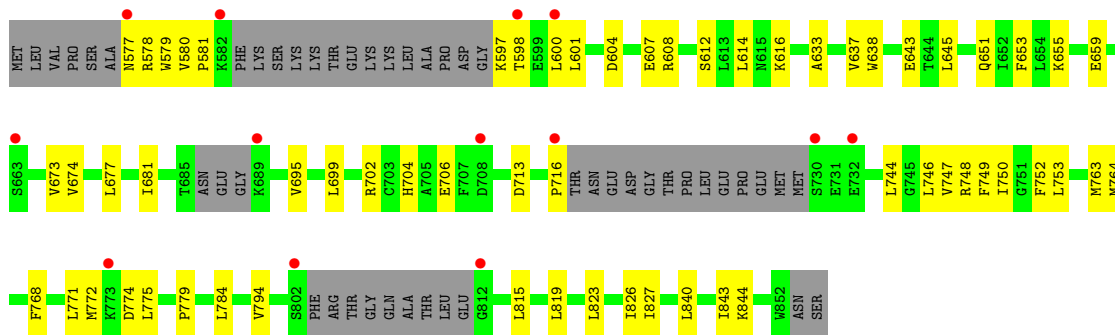


- Molecule 2: EUKARYOTIC INITIATION FACTOR 4F SUBUNIT P150





● Molecule 2: EUKARYOTIC INITIATION FACTOR 4F SUBUNIT P150



4 Data and refinement statistics

Property	Value	Source
Space group	P 1 21 1	Depositor
Cell constants a, b, c, α , β , γ	68.92Å 111.36Å 111.28Å 90.00° 99.71° 90.00°	Depositor
Resolution (Å)	33.21 – 2.80 33.21 – 2.80	Depositor EDS
% Data completeness (in resolution range)	99.8 (33.21-2.80) 99.2 (33.21-2.80)	Depositor EDS
R_{merge}	0.09	Depositor
R_{sym}	(Not available)	Depositor
$\langle I/\sigma(I) \rangle$ ¹	1.98 (at 2.81Å)	Xtrriage
Refinement program	PHENIX (PHENIX.REFINE)	Depositor
R, R_{free}	0.252 , 0.287 0.249 , 0.285	Depositor DCC
R_{free} test set	1668 reflections (4.11%)	wwPDB-VP
Wilson B-factor (Å ²)	56.0	Xtrriage
Anisotropy	0.374	Xtrriage
Bulk solvent k_{sol} (e/Å ³), B_{sol} (Å ²)	0.32 , 83.3	EDS
L-test for twinning ²	$\langle L \rangle = 0.48$, $\langle L^2 \rangle = 0.31$	Xtrriage
Estimated twinning fraction	No twinning to report.	Xtrriage
F_o, F_c correlation	0.93	EDS
Total number of atoms	9623	wwPDB-VP
Average B, all atoms (Å ²)	83.0	wwPDB-VP

Xtrriage's analysis on translational NCS is as follows: *The analyses of the Patterson function reveals a significant off-origin peak that is 48.32 % of the origin peak, indicating pseudo-translational symmetry. The chance of finding a peak of this or larger height randomly in a structure without pseudo-translational symmetry is equal to 8.7551e-05. The detected translational NCS is most likely also responsible for the elevated intensity ratio.*

¹Intensities estimated from amplitudes.

²Theoretical values of $\langle |L| \rangle$, $\langle L^2 \rangle$ for acentric reflections are 0.5, 0.333 respectively for untwinned datasets, and 0.375, 0.2 for perfectly twinned datasets.

5 Model quality [i](#)

5.1 Standard geometry [i](#)

Bond lengths and bond angles in the following residue types are not validated in this section: AMP

The Z score for a bond length (or angle) is the number of standard deviations the observed value is removed from the expected value. A bond length (or angle) with $|Z| > 5$ is considered an outlier worth inspection. RMSZ is the root-mean-square of all Z scores of the bond lengths (or angles).

Mol	Chain	Bond lengths		Bond angles	
		RMSZ	# Z >5	RMSZ	# Z >5
1	A	0.28	0/2949	0.71	0/3985
1	B	0.28	0/2949	0.72	0/3985
2	E	0.27	0/1920	0.68	1/2585 (0.0%)
2	F	0.26	0/1899	0.68	1/2556 (0.0%)
All	All	0.27	0/9717	0.70	2/13111 (0.0%)

There are no bond length outliers.

All (2) bond angle outliers are listed below:

Mol	Chain	Res	Type	Atoms	Z	Observed(°)	Ideal(°)
2	E	716	PRO	N-CA-CB	6.71	110.39	103.00
2	F	716	PRO	N-CA-CB	6.70	110.37	103.00

There are no chirality outliers.

There are no planarity outliers.

5.2 Too-close contacts [i](#)

In the following table, the Non-H and H(model) columns list the number of non-hydrogen atoms and hydrogen atoms in the chain respectively. The H(added) column lists the number of hydrogen atoms added and optimized by MolProbity. The Clashes column lists the number of clashes within the asymmetric unit, whereas Symm-Clashes lists symmetry-related clashes.

Mol	Chain	Non-H	H(model)	H(added)	Clashes	Symm-Clashes
1	A	2907	0	2935	68	0
1	B	2907	0	2935	66	0
2	E	1892	0	1887	46	0
2	F	1871	0	1866	42	0
3	A	23	0	12	1	0

Continued on next page...

Continued from previous page...

Mol	Chain	Non-H	H(model)	H(added)	Clashes	Symm-Clashes
3	B	23	0	12	1	0
All	All	9623	0	9647	214	0

The all-atom clashscore is defined as the number of clashes found per 1000 atoms (including hydrogen atoms). The all-atom clashscore for this structure is 11.

All (214) close contacts within the same asymmetric unit are listed below, sorted by their clash magnitude.

Atom-1	Atom-2	Interatomic distance (Å)	Clash overlap (Å)
1:A:69:GLY:HA2	3:A:1178:AMP:H5'1	1.37	1.04
1:A:341:LYS:H	1:A:341:LYS:HD2	1.31	0.93
1:B:341:LYS:H	1:B:341:LYS:HD2	1.31	0.92
1:B:69:GLY:HA2	3:B:1178:AMP:H5'1	1.51	0.90
2:E:730:SER:HB3	2:E:733:TYR:HB3	1.64	0.80
1:A:63:LEU:HD13	1:A:216:MET:HE1	1.64	0.80
1:B:63:LEU:HD13	1:B:216:MET:HE1	1.65	0.79
1:A:156:ARG:HH11	1:A:158:ARG:HH12	1.32	0.78
1:B:156:ARG:HH11	1:B:158:ARG:HH12	1.31	0.76
2:F:600:LEU:HD23	2:F:601:LEU:H	1.53	0.74
2:E:600:LEU:HD23	2:E:601:LEU:H	1.54	0.73
1:A:345:ILE:HG12	1:A:379:TYR:CE1	2.24	0.73
1:B:137:LEU:HD11	1:B:153:ASN:HD22	1.55	0.72
1:B:345:ILE:HG12	1:B:379:TYR:CE1	2.24	0.71
1:A:137:LEU:HD11	1:A:153:ASN:HD22	1.55	0.71
1:A:212:THR:HG23	1:A:216:MET:HE3	1.74	0.69
1:B:176:LEU:HD13	1:B:207:ASP:HB3	1.75	0.69
1:B:212:THR:HG23	1:B:216:MET:HE3	1.75	0.68
2:E:764:MET:HE3	2:E:764:MET:HA	1.76	0.67
2:F:764:MET:HE3	2:F:764:MET:HA	1.76	0.67
1:A:365:THR:H	1:A:368:ASP:HB2	1.59	0.67
1:A:176:LEU:HD13	1:A:207:ASP:HB3	1.76	0.66
1:B:365:THR:H	1:B:368:ASP:HB2	1.61	0.64
1:A:125:ILE:HA	1:A:149:ARG:HG3	1.81	0.63
1:B:80:ALA:HA	1:B:166:MET:HE1	1.82	0.61
1:B:125:ILE:HA	1:B:149:ARG:HG3	1.80	0.61
1:A:80:ALA:HA	1:A:166:MET:HE1	1.83	0.61
2:F:633:ALA:HB1	2:F:645:LEU:HD13	1.83	0.61
1:A:345:ILE:HG12	1:A:379:TYR:HE1	1.66	0.61
1:B:344:TYR:HE1	1:B:362:ASN:HD21	1.49	0.60
1:A:327:GLN:HG3	1:A:329:VAL:HG23	1.83	0.60
1:A:344:TYR:HE1	1:A:362:ASN:HD21	1.50	0.60

Continued on next page...

Continued from previous page...

Atom-1	Atom-2	Interatomic distance (Å)	Clash overlap (Å)
2:E:633:ALA:HB1	2:E:645:LEU:HD13	1.83	0.59
1:B:327:GLN:HG3	1:B:329:VAL:HG23	1.83	0.59
1:B:345:ILE:HG12	1:B:379:TYR:HE1	1.66	0.59
2:F:746:LEU:O	2:F:750:ILE:HG12	2.03	0.58
2:F:784:LEU:HD21	2:F:826:ILE:HD13	1.85	0.58
2:F:713:ASP:HB2	2:F:774:ASP:OD2	2.04	0.58
2:E:607:GLU:HA	2:E:651:GLN:HE22	1.69	0.58
2:E:784:LEU:HD21	2:E:826:ILE:HD13	1.85	0.57
1:A:287:VAL:HG12	1:A:313:ILE:HB	1.84	0.57
2:E:746:LEU:O	2:E:750:ILE:HG12	2.04	0.57
1:B:37:VAL:HG23	1:B:42:PHE:HB2	1.85	0.57
2:F:607:GLU:HA	2:F:651:GLN:HE22	1.69	0.57
1:B:287:VAL:HG12	1:B:313:ILE:HB	1.85	0.57
2:F:744:LEU:O	2:F:747:VAL:HG22	2.05	0.57
1:B:81:LEU:HB3	1:B:117:MET:HE1	1.86	0.57
1:A:37:VAL:HG23	1:A:42:PHE:HB2	1.86	0.57
2:E:713:ASP:HB2	2:E:774:ASP:OD2	2.04	0.57
1:B:389:ASP:O	1:B:393:LEU:HG	2.05	0.56
1:A:277:THR:HG23	1:A:287:VAL:CG2	2.36	0.56
2:F:748:ARG:HE	2:F:752:PHE:HE1	1.53	0.56
1:B:277:THR:HG23	1:B:287:VAL:CG2	2.35	0.56
2:E:772:MET:HE1	2:E:815:LEU:HD11	1.88	0.56
2:F:772:MET:HE1	2:F:815:LEU:HD11	1.88	0.56
1:B:48:ILE:HD11	1:B:66:ALA:HB1	1.88	0.55
2:E:748:ARG:HE	2:E:752:PHE:HE1	1.54	0.55
1:A:81:LEU:HB3	1:A:117:MET:HE1	1.87	0.55
2:E:744:LEU:O	2:E:747:VAL:HG22	2.06	0.55
1:A:48:ILE:HD11	1:A:66:ALA:HB1	1.89	0.54
1:A:243:GLU:HB2	1:A:246:TYR:CD1	2.43	0.54
1:B:243:GLU:HB2	1:B:246:TYR:CD1	2.43	0.53
1:B:76:PHE:HB2	1:B:168:ILE:HD13	1.89	0.53
1:A:273:VAL:HG13	1:A:315:ILE:HG22	1.90	0.53
1:B:273:VAL:HG13	1:B:315:ILE:HG22	1.89	0.53
1:A:169:LEU:HB3	1:A:175:MET:HE1	1.90	0.53
1:A:285:PHE:CZ	2:E:616:LYS:HE2	2.45	0.52
1:A:76:PHE:HB2	1:A:168:ILE:HD13	1.90	0.52
1:B:169:LEU:HB3	1:B:175:MET:HE1	1.91	0.52
2:F:677:LEU:HD22	2:F:695:VAL:CG2	2.40	0.52
2:F:597:LYS:CB	2:F:638:TRP:HE1	2.23	0.52
2:F:614:LEU:HB3	2:F:655:LYS:HG3	1.90	0.52
1:A:119:ILE:HA	1:A:141:GLN:OE1	2.10	0.52

Continued on next page...

Continued from previous page...

Atom-1	Atom-2	Interatomic distance (Å)	Clash overlap (Å)
1:B:52:ALA:O	1:B:56:ILE:HG13	2.09	0.52
2:E:600:LEU:HD23	2:E:601:LEU:N	2.24	0.52
1:B:96:LEU:HD11	1:B:150:VAL:HG11	1.92	0.52
1:B:119:ILE:HA	1:B:141:GLN:OE1	2.10	0.52
1:A:338:PRO:HD3	1:A:347:ARG:NH1	2.25	0.51
2:E:614:LEU:HB3	2:E:655:LYS:HG3	1.91	0.51
1:B:52:ALA:O	1:B:55:PRO:HG2	2.10	0.51
2:E:677:LEU:HD22	2:E:695:VAL:CG2	2.40	0.51
1:A:149:ARG:HA	1:A:149:ARG:CZ	2.40	0.51
1:A:52:ALA:O	1:A:56:ILE:HG13	2.11	0.51
1:A:203:THR:C	1:A:205:PRO:HD3	2.36	0.51
1:A:96:LEU:HD11	1:A:150:VAL:HG11	1.92	0.51
2:F:749:PHE:CE2	2:F:753:LEU:HD11	2.46	0.51
1:B:341:LYS:H	1:B:341:LYS:CD	2.09	0.51
2:F:600:LEU:HD23	2:F:601:LEU:N	2.24	0.51
2:F:637:VAL:HG12	2:F:681:ILE:HG12	1.93	0.51
1:B:338:PRO:HD3	1:B:347:ARG:NH1	2.26	0.51
1:A:17:TYR:HB2	1:A:220:VAL:HG13	1.92	0.50
1:B:203:THR:C	1:B:205:PRO:HD3	2.36	0.50
1:A:285:PHE:CE1	2:E:616:LYS:HE2	2.46	0.50
1:B:17:TYR:CZ	1:B:19:LYS:HD3	2.47	0.50
1:B:17:TYR:HB2	1:B:220:VAL:HG13	1.93	0.50
2:E:674:VAL:HG22	2:E:695:VAL:HB	1.94	0.50
2:F:674:VAL:HG22	2:F:695:VAL:HB	1.94	0.50
1:B:149:ARG:CZ	1:B:149:ARG:HA	2.41	0.50
2:F:771:LEU:O	2:F:775:LEU:HB2	2.12	0.50
1:A:52:ALA:O	1:A:55:PRO:HG2	2.11	0.50
1:A:365:THR:N	1:A:368:ASP:HB2	2.26	0.49
2:E:637:VAL:HG12	2:E:681:ILE:HG12	1.94	0.49
1:A:17:TYR:CZ	1:A:19:LYS:HD3	2.47	0.49
1:A:369:VAL:O	1:A:373:ARG:HG2	2.12	0.49
1:A:387:PRO:O	2:E:579:TRP:HB2	2.12	0.49
2:E:771:LEU:O	2:E:775:LEU:HB2	2.12	0.49
1:A:388:SER:HB3	2:E:578:ARG:O	2.14	0.48
1:B:272:LYS:HD2	1:B:336:ASP:OD1	2.13	0.48
2:E:823:LEU:O	2:E:826:ILE:HG22	2.13	0.48
1:A:286:THR:HB	2:E:618:THR:HG21	1.95	0.48
2:E:749:PHE:CE2	2:E:753:LEU:HD11	2.47	0.48
2:F:673:VAL:O	2:F:677:LEU:HB2	2.14	0.48
1:B:369:VAL:O	1:B:373:ARG:HG2	2.13	0.48
1:A:54:MET:N	1:A:55:PRO:HD2	2.28	0.48

Continued on next page...

Continued from previous page...

Atom-1	Atom-2	Interatomic distance (Å)	Clash overlap (Å)
1:B:54:MET:N	1:B:55:PRO:HD2	2.29	0.48
2:F:702:ARG:O	2:F:706:GLU:HG2	2.14	0.48
1:B:277:THR:HG23	1:B:287:VAL:HG23	1.96	0.47
2:F:823:LEU:O	2:F:826:ILE:HG22	2.13	0.47
1:B:33:LEU:O	1:B:37:VAL:HG12	2.14	0.47
1:B:183:GLN:O	1:B:187:ILE:HD12	2.15	0.47
2:E:673:VAL:O	2:E:677:LEU:HB2	2.14	0.47
1:A:272:LYS:HD2	1:A:336:ASP:OD1	2.15	0.47
2:F:772:MET:HG2	2:F:819:LEU:HD13	1.96	0.47
1:A:33:LEU:O	1:A:37:VAL:HG12	2.15	0.47
2:E:702:ARG:O	2:E:706:GLU:HG2	2.14	0.47
1:B:365:THR:N	1:B:368:ASP:HB2	2.27	0.46
1:A:373:ARG:O	1:A:377:LYS:HG2	2.15	0.46
2:E:772:MET:HG2	2:E:819:LEU:HD13	1.97	0.46
1:A:277:THR:HG23	1:A:287:VAL:HG23	1.97	0.46
1:B:373:ARG:O	1:B:377:LYS:HG2	2.14	0.46
2:E:704:HIS:CD2	2:E:763:MET:HE1	2.51	0.46
2:F:775:LEU:HD11	2:F:784:LEU:HD23	1.98	0.46
2:E:775:LEU:HA	2:E:779:PRO:HG3	1.97	0.46
2:F:775:LEU:HA	2:F:779:PRO:HG3	1.97	0.46
2:E:695:VAL:O	2:E:699:LEU:HG	2.16	0.45
1:B:285:PHE:CZ	2:F:616:LYS:HE2	2.52	0.45
2:F:843:ILE:HD12	2:F:844:LYS:N	2.31	0.45
1:B:387:PRO:O	2:F:579:TRP:HB2	2.17	0.45
2:F:695:VAL:O	2:F:699:LEU:HG	2.16	0.45
2:F:604:ASP:O	2:F:608:ARG:HG3	2.17	0.45
1:B:182:GLU:O	1:B:186:GLN:HG2	2.17	0.45
1:A:38:PHE:C	1:A:40:TYR:H	2.25	0.45
1:A:261:THR:HG22	2:E:659:GLU:HG2	1.99	0.45
1:A:183:GLN:O	1:A:187:ILE:HD12	2.16	0.45
1:B:38:PHE:C	1:B:40:TYR:H	2.25	0.45
2:F:577:ASN:O	2:F:578:ARG:HG3	2.17	0.45
2:E:843:ILE:HD12	2:E:844:LYS:N	2.31	0.45
1:A:17:TYR:CB	1:A:220:VAL:HG13	2.48	0.44
1:A:182:GLU:O	1:A:186:GLN:HG2	2.17	0.44
1:B:137:LEU:HG	1:B:159:PHE:HB3	1.99	0.44
2:F:704:HIS:CD2	2:F:763:MET:HE1	2.52	0.44
1:B:22:TYR:O	1:B:45:PRO:HD2	2.17	0.44
1:A:137:LEU:HG	1:A:159:PHE:HB3	2.00	0.44
1:A:265:ILE:HB	1:A:315:ILE:HG13	1.99	0.44
1:B:265:ILE:HB	1:B:315:ILE:HG13	1.99	0.44

Continued on next page...

Continued from previous page...

Atom-1	Atom-2	Interatomic distance (Å)	Clash overlap (Å)
1:B:345:ILE:HG12	1:B:379:TYR:CZ	2.52	0.44
2:E:844:LYS:O	2:E:844:LYS:HD3	2.18	0.44
2:F:827:ILE:HD11	2:F:840:LEU:HB3	2.00	0.44
2:E:604:ASP:O	2:E:608:ARG:HG3	2.17	0.44
2:F:823:LEU:O	2:F:827:ILE:HG13	2.17	0.44
2:F:823:LEU:HD22	2:F:840:LEU:HD22	1.99	0.44
2:F:844:LYS:O	2:F:844:LYS:HD3	2.18	0.44
2:E:730:SER:HB3	2:E:733:TYR:CB	2.41	0.44
2:E:775:LEU:HD11	2:E:784:LEU:HD23	1.99	0.44
1:B:21:VAL:HG21	1:B:54:MET:HG3	1.99	0.44
1:A:21:VAL:HG21	1:A:54:MET:HG3	2.00	0.43
1:B:17:TYR:CB	1:B:220:VAL:HG13	2.48	0.43
2:F:823:LEU:HA	2:F:826:ILE:HG22	2.00	0.43
1:A:341:LYS:HD2	1:A:341:LYS:N	2.14	0.43
2:E:612:SER:O	2:E:616:LYS:HG3	2.19	0.43
2:E:823:LEU:HA	2:E:826:ILE:HG22	2.00	0.43
1:A:237:PHE:HA	1:A:384:GLU:O	2.18	0.43
2:E:827:ILE:HD11	2:E:840:LEU:HB3	2.00	0.43
1:A:22:TYR:O	1:A:45:PRO:HD2	2.18	0.43
1:A:169:LEU:HD12	1:A:169:LEU:N	2.34	0.43
1:B:237:PHE:HA	1:B:384:GLU:O	2.18	0.43
2:E:823:LEU:O	2:E:827:ILE:HG13	2.18	0.43
1:A:345:ILE:HG12	1:A:379:TYR:CZ	2.52	0.42
1:B:137:LEU:H	1:B:137:LEU:HD23	1.84	0.42
2:F:612:SER:O	2:F:616:LYS:HG3	2.19	0.42
1:A:137:LEU:HD23	1:A:137:LEU:H	1.84	0.42
1:B:327:GLN:CG	1:B:329:VAL:HG23	2.48	0.42
2:E:823:LEU:HD22	2:E:840:LEU:HD22	2.01	0.42
2:F:580:VAL:HA	2:F:581:PRO:HD3	1.88	0.42
1:A:125:ILE:HD12	1:A:125:ILE:N	2.34	0.42
2:F:637:VAL:HG23	2:F:638:TRP:CD2	2.55	0.41
1:A:192:PRO:HA	1:A:193:PRO:HD2	1.89	0.41
2:E:655:LYS:NZ	2:E:659:GLU:OE1	2.53	0.41
2:E:826:ILE:O	2:E:830:ALA:HB3	2.20	0.41
1:A:200:LEU:HD12	1:A:200:LEU:N	2.35	0.41
1:A:110:VAL:HG12	1:A:121:VAL:HG21	2.02	0.41
1:B:169:LEU:N	1:B:169:LEU:HD12	2.36	0.41
1:B:337:LEU:HD12	1:B:337:LEU:HA	1.96	0.41
1:B:192:PRO:HA	1:B:193:PRO:HD2	1.88	0.41
1:A:100:ARG:HB3	1:A:125:ILE:HG21	2.01	0.41
1:A:98:PRO:HG3	1:A:175:MET:HG3	2.03	0.41

Continued on next page...

Continued from previous page...

Atom-1	Atom-2	Interatomic distance (Å)	Clash overlap (Å)
1:B:125:ILE:N	1:B:125:ILE:HD12	2.35	0.41
1:A:73:THR:HA	1:A:76:PHE:CE2	2.56	0.41
1:A:327:GLN:CG	1:A:329:VAL:HG23	2.47	0.41
1:B:73:THR:HA	1:B:76:PHE:CE2	2.55	0.41
1:B:98:PRO:HG3	1:B:175:MET:HG3	2.03	0.41
2:E:637:VAL:HG23	2:E:638:TRP:CD2	2.55	0.41
1:B:200:LEU:N	1:B:200:LEU:HD12	2.36	0.41
2:E:678:ASN:HA	2:E:679:PRO:HD3	1.92	0.41
2:E:768:PHE:O	2:E:772:MET:HG3	2.20	0.41
1:A:147:PRO:HB2	1:A:180:PHE:CD2	2.56	0.40
1:B:100:ARG:HB3	1:B:125:ILE:HG21	2.01	0.40
2:F:655:LYS:NZ	2:F:659:GLU:OE1	2.54	0.40
1:A:243:GLU:HB2	1:A:246:TYR:CE1	2.56	0.40
1:B:110:VAL:HG12	1:B:121:VAL:HG21	2.02	0.40
2:F:653:PHE:CD1	2:F:702:ARG:HG3	2.56	0.40
2:F:768:PHE:O	2:F:772:MET:HG3	2.21	0.40
1:B:147:PRO:HB2	1:B:180:PHE:CD2	2.56	0.40
1:B:234:ILE:HD12	1:B:234:ILE:O	2.21	0.40

There are no symmetry-related clashes.

5.3 Torsion angles [i](#)

5.3.1 Protein backbone [i](#)

In the following table, the Percentiles column shows the percent Ramachandran outliers of the chain as a percentile score with respect to all X-ray entries followed by that with respect to entries of similar resolution.

The Analysed column shows the number of residues for which the backbone conformation was analysed, and the total number of residues.

Mol	Chain	Analysed	Favoured	Allowed	Outliers	Percentiles	
1	A	360/395 (91%)	342 (95%)	17 (5%)	1 (0%)	36	66
1	B	360/395 (91%)	342 (95%)	17 (5%)	1 (0%)	36	66
2	E	230/284 (81%)	215 (94%)	14 (6%)	1 (0%)	30	60
2	F	227/284 (80%)	217 (96%)	10 (4%)	0	100	100
All	All	1177/1358 (87%)	1116 (95%)	58 (5%)	3 (0%)	36	66

All (3) Ramachandran outliers are listed below:

Mol	Chain	Res	Type
2	E	581	PRO
1	A	327	GLN
1	B	327	GLN

5.3.2 Protein sidechains [i](#)

In the following table, the Percentiles column shows the percent sidechain outliers of the chain as a percentile score with respect to all X-ray entries followed by that with respect to entries of similar resolution.

The Analysed column shows the number of residues for which the sidechain conformation was analysed, and the total number of residues.

Mol	Chain	Analysed	Rotameric	Outliers	Percentiles	
1	A	322/348 (92%)	311 (97%)	11 (3%)	32	68
1	B	322/348 (92%)	312 (97%)	10 (3%)	35	70
2	E	203/253 (80%)	200 (98%)	3 (2%)	57	84
2	F	200/253 (79%)	197 (98%)	3 (2%)	57	84
All	All	1047/1202 (87%)	1020 (97%)	27 (3%)	40	75

All (27) residues with a non-rotameric sidechain are listed below:

Mol	Chain	Res	Type
1	A	37	VAL
1	A	125	ILE
1	A	149	ARG
1	A	157	ARG
1	A	187	ILE
1	A	260	VAL
1	A	320	LEU
1	A	345	ILE
1	A	364	VAL
1	A	390	ILE
1	A	393	LEU
1	B	37	VAL
1	B	125	ILE
1	B	149	ARG
1	B	157	ARG
1	B	187	ILE
1	B	260	VAL
1	B	320	LEU
1	B	345	ILE

Continued on next page...

Continued from previous page...

Mol	Chain	Res	Type
1	B	364	VAL
1	B	390	ILE
2	E	598	THR
2	E	643	GLU
2	E	794	VAL
2	F	598	THR
2	F	643	GLU
2	F	794	VAL

Sometimes sidechains can be flipped to improve hydrogen bonding and reduce clashes. All (15) such sidechains are listed below:

Mol	Chain	Res	Type
1	A	50	GLN
1	A	60	HIS
1	A	67	GLN
1	A	153	ASN
1	A	206	ASN
1	A	362	ASN
1	B	50	GLN
1	B	60	HIS
1	B	153	ASN
1	B	206	ASN
1	B	362	ASN
2	E	651	GLN
2	E	697	HIS
2	F	651	GLN
2	F	697	HIS

5.3.3 RNA [i](#)

There are no RNA molecules in this entry.

5.4 Non-standard residues in protein, DNA, RNA chains [i](#)

There are no non-standard protein/DNA/RNA residues in this entry.

5.5 Carbohydrates [i](#)

There are no oligosaccharides in this entry.

5.6 Ligand geometry

2 ligands are modelled in this entry.

In the following table, the Counts columns list the number of bonds (or angles) for which Mogul statistics could be retrieved, the number of bonds (or angles) that are observed in the model and the number of bonds (or angles) that are defined in the Chemical Component Dictionary. The Link column lists molecule types, if any, to which the group is linked. The Z score for a bond length (or angle) is the number of standard deviations the observed value is removed from the expected value. A bond length (or angle) with $|Z| > 2$ is considered an outlier worth inspection. RMSZ is the root-mean-square of all Z scores of the bond lengths (or angles).

Mol	Type	Chain	Res	Link	Bond lengths			Bond angles		
					Counts	RMSZ	# Z > 2	Counts	RMSZ	# Z > 2
3	AMP	B	1178	-	25,25,25	1.45	4 (16%)	37,38,38	1.98	10 (27%)
3	AMP	A	1178	-	25,25,25	1.44	4 (16%)	37,38,38	1.96	9 (24%)

In the following table, the Chirals column lists the number of chiral outliers, the number of chiral centers analysed, the number of these observed in the model and the number defined in the Chemical Component Dictionary. Similar counts are reported in the Torsion and Rings columns. '-' means no outliers of that kind were identified.

Mol	Type	Chain	Res	Link	Chirals	Torsions	Rings
3	AMP	B	1178	-	-	2/10/26/26	0/3/3/3
3	AMP	A	1178	-	-	3/10/26/26	0/3/3/3

All (8) bond length outliers are listed below:

Mol	Chain	Res	Type	Atoms	Z	Observed(Å)	Ideal(Å)
3	B	1178	AMP	C5-C4	4.73	1.47	1.39
3	A	1178	AMP	C5-C4	4.67	1.47	1.39
3	B	1178	AMP	C5-C6	2.88	1.49	1.41
3	A	1178	AMP	C5-C6	2.80	1.48	1.41
3	A	1178	AMP	C8-N7	2.33	1.36	1.31
3	B	1178	AMP	C8-N7	2.29	1.36	1.31
3	A	1178	AMP	C5-N7	-2.21	1.35	1.39
3	B	1178	AMP	C5-N7	-2.19	1.35	1.39

All (19) bond angle outliers are listed below:

Mol	Chain	Res	Type	Atoms	Z	Observed(°)	Ideal(°)
3	B	1178	AMP	C5-C4-N3	-5.85	118.67	126.72
3	A	1178	AMP	C5-C4-N3	-5.82	118.71	126.72
3	A	1178	AMP	N3-C4-N9	4.63	135.04	127.17

Continued on next page...

Continued from previous page...

Mol	Chain	Res	Type	Atoms	Z	Observed(°)	Ideal(°)
3	B	1178	AMP	N3-C4-N9	4.58	134.95	127.17
3	B	1178	AMP	C4-C5-N7	-3.73	106.32	110.58
3	B	1178	AMP	C2-N3-C4	3.73	120.93	111.83
3	A	1178	AMP	C2-N3-C4	3.71	120.89	111.83
3	A	1178	AMP	C4-C5-N7	-3.52	106.56	110.58
3	A	1178	AMP	N3-C2-N1	-3.18	123.77	128.58
3	B	1178	AMP	N3-C2-N1	-3.17	123.79	128.58
3	B	1178	AMP	C5-N7-C8	2.77	107.80	103.45
3	A	1178	AMP	C4-N9-C8	2.74	108.62	105.74
3	B	1178	AMP	C4-N9-C8	2.72	108.60	105.74
3	A	1178	AMP	C5-N7-C8	2.60	107.54	103.45
3	B	1178	AMP	C6-C5-N7	2.30	136.53	132.09
3	A	1178	AMP	C6-C5-N7	2.15	136.23	132.09
3	B	1178	AMP	N9-C8-N7	-2.13	110.91	113.94
3	B	1178	AMP	C3'-C2'-C1'	2.08	105.41	101.46
3	A	1178	AMP	N9-C8-N7	-2.05	111.03	113.94

There are no chirality outliers.

All (5) torsion outliers are listed below:

Mol	Chain	Res	Type	Atoms
3	A	1178	AMP	C5'-O5'-P-O1P
3	B	1178	AMP	C5'-O5'-P-O1P
3	A	1178	AMP	C5'-O5'-P-O2P
3	B	1178	AMP	C5'-O5'-P-O2P
3	A	1178	AMP	O4'-C4'-C5'-O5'

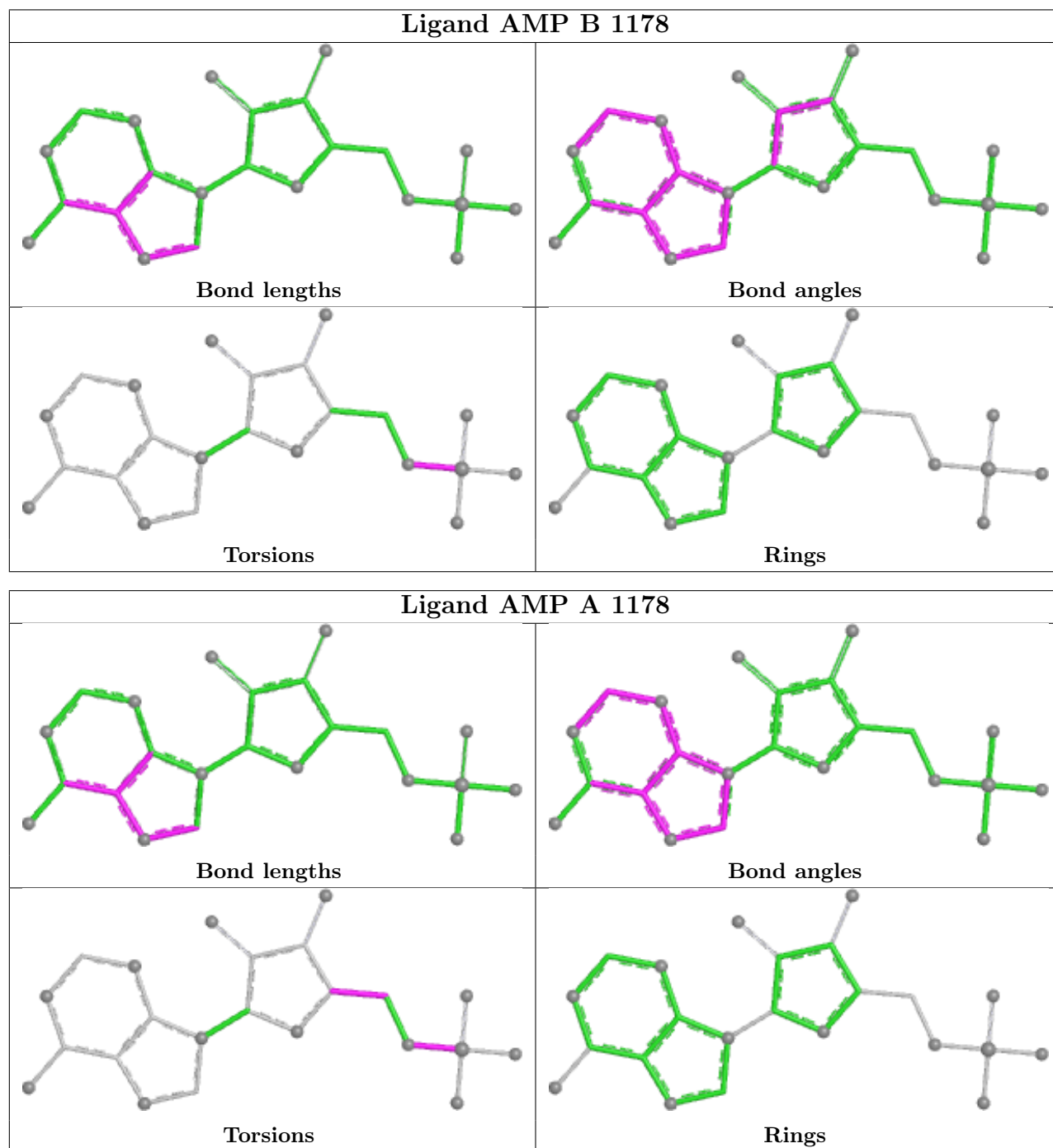
There are no ring outliers.

2 monomers are involved in 2 short contacts:

Mol	Chain	Res	Type	Clashes	Symm-Clashes
3	B	1178	AMP	1	0
3	A	1178	AMP	1	0

The following is a two-dimensional graphical depiction of Mogul quality analysis of bond lengths, bond angles, torsion angles, and ring geometry for all instances of the Ligand of Interest. In addition, ligands with molecular weight > 250 and outliers as shown on the validation Tables will also be included. For torsion angles, if less than 5% of the Mogul distribution of torsion angles is within 10 degrees of the torsion angle in question, then that torsion angle is considered an outlier. Any bond that is central to one or more torsion angles identified as an outlier by Mogul will be highlighted in the graph. For rings, the root-mean-square deviation (RMSD) between the ring in question and similar rings identified by Mogul is calculated over all ring torsion angles. If the

average RMSD is greater than 60 degrees and the minimal RMSD between the ring in question and any Mogul-identified rings is also greater than 60 degrees, then that ring is considered an outlier. The outliers are highlighted in purple. The color gray indicates Mogul did not find sufficient equivalents in the CSD to analyse the geometry.



5.7 Other polymers ⓘ

There are no such residues in this entry.

5.8 Polymer linkage issues

There are no chain breaks in this entry.

6 Fit of model and data

6.1 Protein, DNA and RNA chains

In the following table, the column labelled ‘#RSRZ > 2’ contains the number (and percentage) of RSRZ outliers, followed by percent RSRZ outliers for the chain as percentile scores relative to all X-ray entries and entries of similar resolution. The OWAB column contains the minimum, median, 95th percentile and maximum values of the occupancy-weighted average B-factor per residue. The column labelled ‘Q < 0.9’ lists the number of (and percentage) of residues with an average occupancy less than 0.9.

Mol	Chain	Analysed	<RSRZ>	#RSRZ>2	OWAB(Å ²)	Q<0.9
1	A	366/395 (92%)	0.54	27 (7%) 20 15	39, 72, 133, 197	0
1	B	366/395 (92%)	0.46	26 (7%) 22 16	40, 73, 133, 197	0
2	E	240/284 (84%)	0.80	27 (11%) 10 7	52, 83, 130, 155	0
2	F	237/284 (83%)	0.59	13 (5%) 30 23	56, 87, 130, 155	0
All	All	1209/1358 (89%)	0.58	93 (7%) 19 14	39, 78, 132, 197	0

All (93) RSRZ outliers are listed below:

Mol	Chain	Res	Type	RSRZ
1	A	326	VAL	4.0
1	B	136	GLY	4.0
1	B	331	LEU	4.0
2	E	811	GLU	3.9
1	A	319	LEU	3.9
2	E	843	ILE	3.8
1	A	136	GLY	3.8
1	B	393	LEU	3.5
2	F	802	SER	3.5
1	A	320	LEU	3.5
1	A	393	LEU	3.5
1	B	319	LEU	3.4
1	A	371	ALA	3.4
2	E	599	GLU	3.3
2	E	813	SER	3.3
2	E	600	LEU	3.3
2	F	600	LEU	3.3
1	B	326	VAL	3.2
2	E	716	PRO	3.2
2	F	598	THR	3.1
2	E	851	ASN	3.1

Continued on next page...

Continued from previous page...

Mol	Chain	Res	Type	RSRZ
2	E	598	THR	3.1
1	B	323	GLY	3.0
1	A	391	ALA	3.0
2	E	802	SER	3.0
1	A	325	ASP	3.0
2	E	814	GLN	3.0
2	F	812	GLY	3.0
1	B	324	ILE	2.9
2	E	684	GLU	2.9
1	A	12	GLN	2.8
1	A	350	ARG	2.8
2	F	730	SER	2.8
1	B	232	GLU	2.8
1	A	18	ASP	2.7
2	E	826	ILE	2.7
1	B	391	ALA	2.7
2	E	733	TYR	2.7
1	B	341	LYS	2.6
1	A	235	LYS	2.6
1	A	321	ALA	2.6
2	E	765	PHE	2.6
1	A	86	THR	2.6
1	B	390	ILE	2.5
1	B	325	ASP	2.5
2	F	582	LYS	2.5
2	E	619	LEU	2.5
1	B	322	ARG	2.5
2	E	815	LEU	2.4
1	B	125	ILE	2.4
2	E	576	ALA	2.4
2	F	689	LYS	2.4
1	B	382	GLN	2.4
1	B	137	LEU	2.4
2	E	689	LYS	2.4
1	B	330	SER	2.4
1	A	369	VAL	2.3
2	E	774	ASP	2.3
2	E	731	GLU	2.3
1	B	69	GLY	2.3
2	F	732	GLU	2.3
2	F	708	ASP	2.3
2	E	773	LYS	2.3

Continued on next page...

Continued from previous page...

Mol	Chain	Res	Type	RSRZ
1	B	158	ARG	2.3
1	B	389	ASP	2.3
1	A	234	ILE	2.2
2	F	773	LYS	2.2
1	A	15	THR	2.2
2	E	734	TYR	2.2
2	E	708	ASP	2.2
1	B	318	ASP	2.2
1	A	378	PHE	2.2
2	E	729	MET	2.1
1	A	138	ARG	2.1
1	A	125	ILE	2.1
1	A	327	GLN	2.1
1	A	334	ASN	2.1
1	A	372	MET	2.1
2	F	716	PRO	2.1
2	E	801	ASP	2.1
2	E	682	THR	2.1
1	B	235	LYS	2.1
1	A	323	GLY	2.1
1	B	321	ALA	2.1
1	A	367	GLU	2.1
2	F	663	SER	2.1
1	B	320	LEU	2.1
1	A	207	ASP	2.1
1	A	329	VAL	2.0
1	B	260	VAL	2.0
2	E	777	ASP	2.0
1	B	366	ASN	2.0
2	F	577	ASN	2.0

6.2 Non-standard residues in protein, DNA, RNA chains [\(i\)](#)

There are no non-standard protein/DNA/RNA residues in this entry.

6.3 Carbohydrates [\(i\)](#)

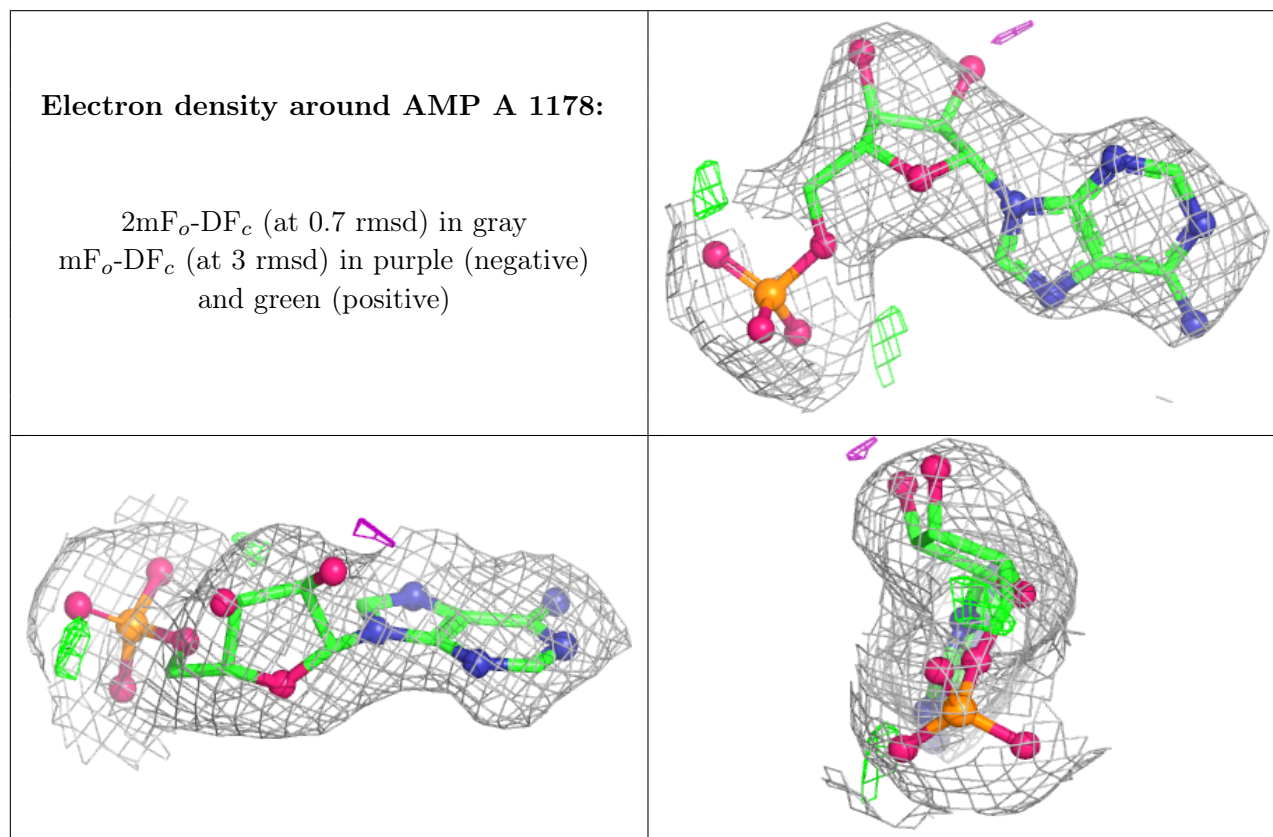
There are no oligosaccharides in this entry.

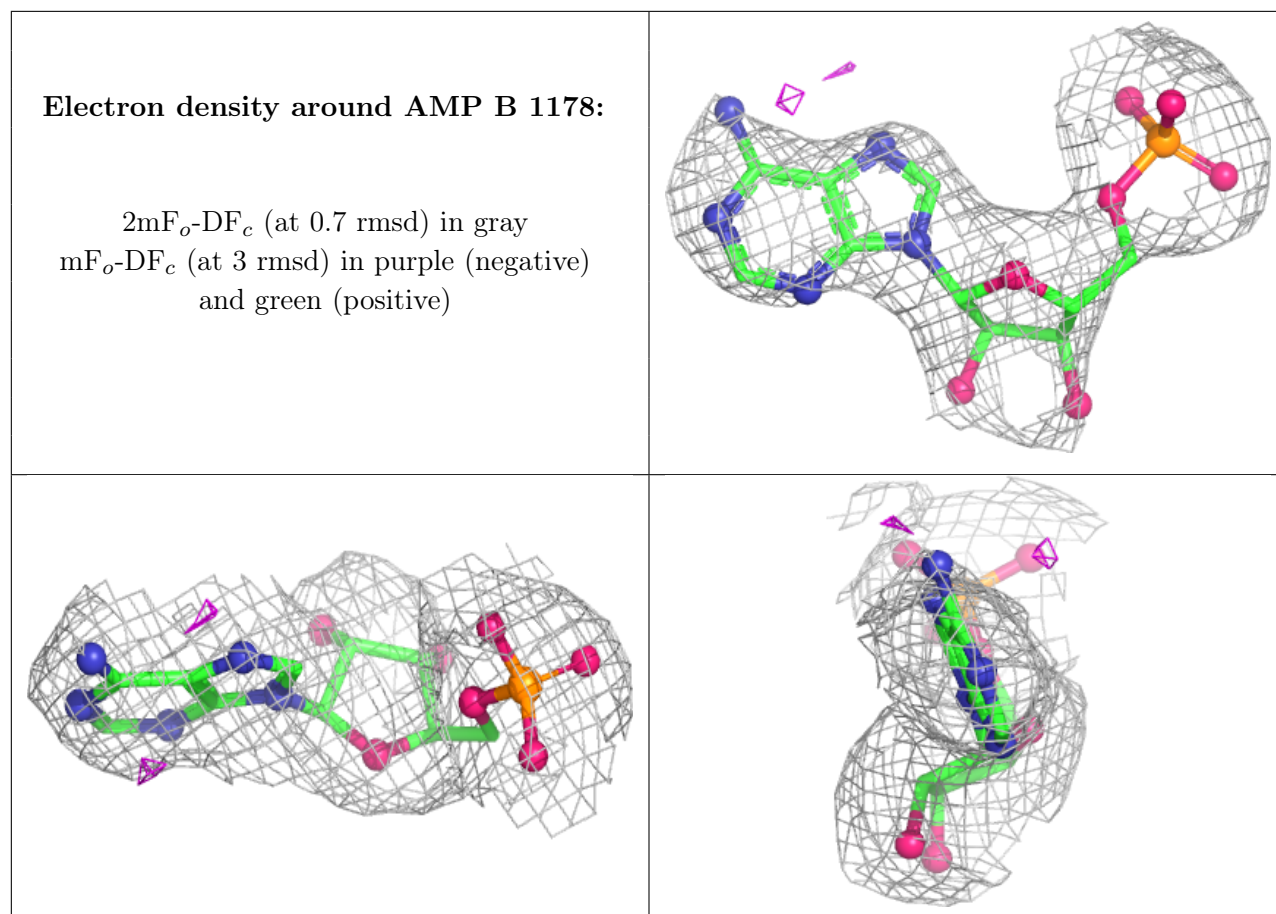
6.4 Ligands [i](#)

In the following table, the Atoms column lists the number of modelled atoms in the group and the number defined in the chemical component dictionary. The B-factors column lists the minimum, median, 95th percentile and maximum values of B factors of atoms in the group. The column labelled 'Q<0.9' lists the number of atoms with occupancy less than 0.9.

Mol	Type	Chain	Res	Atoms	RSCC	RSR	B-factors(\AA^2)	Q<0.9
3	AMP	A	1178	23/23	0.92	0.10	49,74,86,104	0
3	AMP	B	1178	23/23	0.92	0.12	38,93,114,123	0

The following is a graphical depiction of the model fit to experimental electron density of all instances of the Ligand of Interest. In addition, ligands with molecular weight > 250 and outliers as shown on the geometry validation Tables will also be included. Each fit is shown from different orientation to approximate a three-dimensional view.





6.5 Other polymers [i](#)

There are no such residues in this entry.