



Full wwPDB X-ray Structure Validation Report ⓘ

Mar 5, 2026 – 06:42 AM UTC

PDB ID : 6VSF / pdb_00006vsf
Title : Mycobacterium tuberculosis dihydrofolate reductase in complex with 4-(3,4-dihydro-2H-benzo[b][1,4]dioxepin-7-yl)-4-oxobutanoic acid(fragment 16)
Authors : Ribeiro, J.A.; Dias, M.V.B.
Deposited on : 2020-02-11
Resolution : 2.01 Å(reported)

This is a Full wwPDB X-ray Structure Validation Report for a publicly released PDB entry.

We welcome your comments at validation@mail.wwpdb.org

A user guide is available at

<https://www.wwpdb.org/validation/2017/XrayValidationReportHelp>

with specific help available everywhere you see the ⓘ symbol.

The types of validation reports are described at

<http://www.wwpdb.org/validation/2017/FAQs#types>.

The following versions of software and data (see [references ⓘ](#)) were used in the production of this report:

MolProbity : 4-5-2 with Phenix2.0
Mogul : 2022.3.0, CSD as543be (2022)
Xtrriage (Phenix) : 2.0
EDS : 3.0
Buster-report : wwPDB partial adaption of 1.1.7 (2018)
Percentile statistics : 20250101.v01 (using entries in the PDB archive January 1st 2025)
CCP4 : 9.0.010 (Gargrove)
Density-Fitness : 1.0.12
Ideal geometry (proteins) : Engh & Huber (2001)
Ideal geometry (DNA, RNA) : Parkinson et al. (1996)
Validation Pipeline (wwPDB-VP) : 2.49

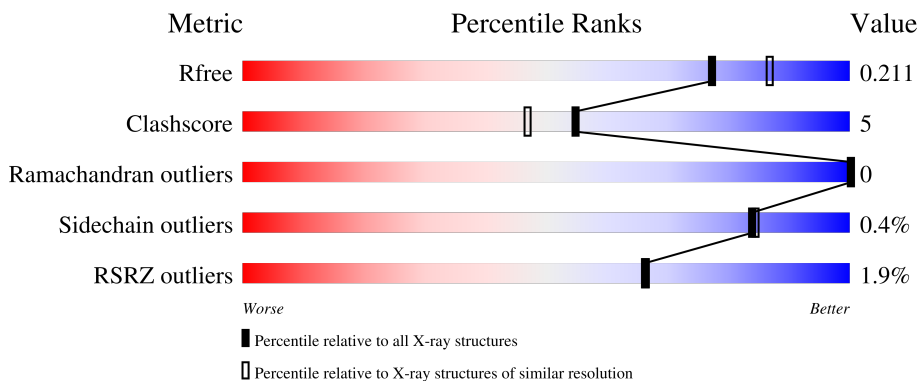
1 Overall quality at a glance

The following experimental techniques were used to determine the structure:

X-RAY DIFFRACTION

The reported resolution of this entry is 2.01 Å.

Percentile scores (ranging between 0-100) for global validation metrics of the entry are shown in the following graphic. The table shows the number of entries on which the scores are based.



Metric	Whole archive (#Entries)	Similar resolution (#Entries, resolution range(Å))
R_{free}	180053	13299 (2.04-2.00)
Clashscore	190562	1022 (2.02-2.02)
Ramachandran outliers	187476	1014 (2.02-2.02)
Sidechain outliers	187428	1014 (2.02-2.02)
RSRZ outliers	180081	13314 (2.04-2.00)

The table below summarises the geometric issues observed across the polymeric chains and their fit to the electron density. The red, orange, yellow and green segments of the lower bar indicate the fraction of residues that contain outliers for ≥ 3 , 2, 1 and 0 types of geometric quality criteria respectively. A grey segment represents the fraction of residues that are not modelled. The numeric value for each fraction is indicated below the corresponding segment, with a dot representing fractions $\leq 5\%$. The upper red bar (where present) indicates the fraction of residues that have poor fit to the electron density. The numeric value is given above the bar.

Mol	Chain	Length	Quality of chain
1	A	161	 93% 6%
1	B	161	 4% 84% 14%

2 Entry composition [i](#)

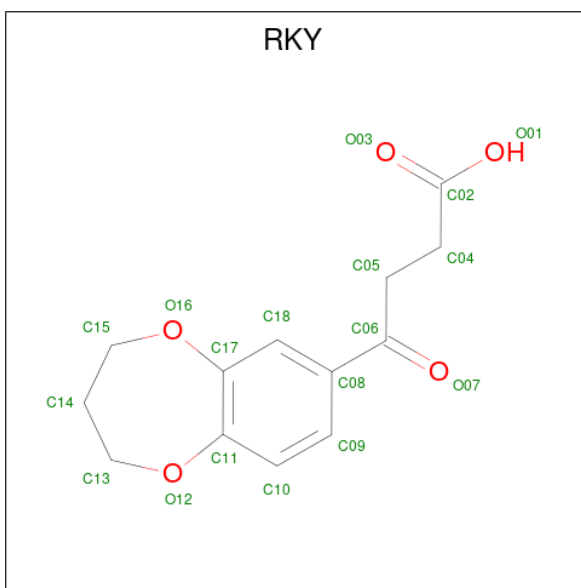
There are 7 unique types of molecules in this entry. The entry contains 2960 atoms, of which 0 are hydrogens and 0 are deuteriums.

In the tables below, the ZeroOcc column contains the number of atoms modelled with zero occupancy, the AltConf column contains the number of residues with at least one atom in alternate conformation and the Trace column contains the number of residues modelled with at most 2 atoms.

- Molecule 1 is a protein called Dihydrofolate reductase.

Mol	Chain	Residues	Atoms					ZeroOcc	AltConf	Trace
			Total	C	N	O	S			
1	A	159	Total	C	N	O	S	0	0	0
			1244	783	228	228	5			
1	B	159	Total	C	N	O	S	0	0	0
			1244	783	228	228	5			

- Molecule 2 is 4-(3,4-dihydro-2H-1,5-benzodioxepin-7-yl)-4-oxobutanoic acid (CCD ID: RKY) (formula: C₁₃H₁₄O₅) (labeled as "Ligand of Interest" by depositor).

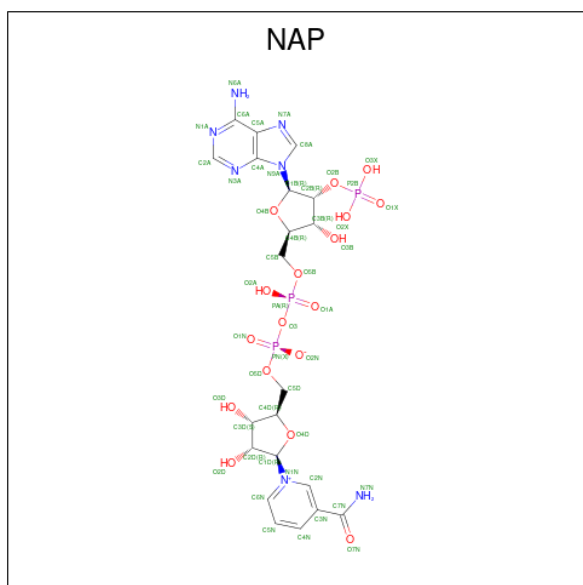


Mol	Chain	Residues	Atoms			ZeroOcc	AltConf
			Total	C	O		
2	A	1	Total	C	O	0	0
			18	13	5		
2	B	1	Total	C	O	0	0
			18	13	5		
2	B	1	Total	C	O	0	0
			18	13	5		

- Molecule 3 is COBALT (II) ION (CCD ID: CO) (formula: Co).

Mol	Chain	Residues	Atoms	ZeroOcc	AltConf
3	A	1	Total Co 1 1	0	0
3	B	1	Total Co 1 1	0	0

- Molecule 4 is NADP NICOTINAMIDE-ADENINE-DINUCLEOTIDE PHOSPHATE (CCD ID: NAP) (formula: C₂₁H₂₈N₇O₁₇P₃).



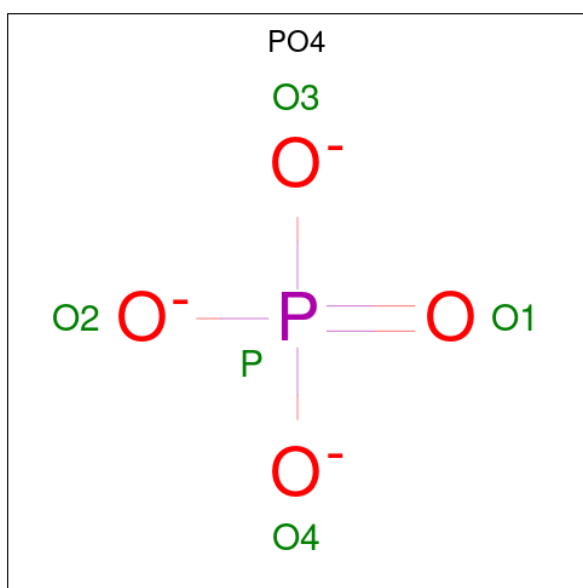
Mol	Chain	Residues	Atoms	ZeroOcc	AltConf
4	A	1	Total C N O P 48 21 7 17 3	0	0
4	B	1	Total C N O P 48 21 7 17 3	0	0

- Molecule 5 is GLYCEROL (CCD ID: GOL) (formula: C₃H₈O₃).



Mol	Chain	Residues	Atoms			ZeroOcc	AltConf
5	A	1	Total	C	O	0	0
			6	3	3		
5	B	1	Total	C	O	0	0
			6	3	3		

- Molecule 6 is PHOSPHATE ION (CCD ID: PO4) (formula: O_4P).



Mol	Chain	Residues	Atoms			ZeroOcc	AltConf
6	A	1	Total	O	P	0	0
			5	4	1		
6	B	1	Total	O	P	0	0
			5	4	1		

Continued on next page...

Continued from previous page...

Mol	Chain	Residues	Atoms			ZeroOcc	AltConf
6	B	1	Total	O	P	0	0
			5	4	1		

- Molecule 7 is water.

Mol	Chain	Residues	Atoms		ZeroOcc	AltConf
7	A	170	Total	O	0	0
			170	170		
7	B	123	Total	O	0	0
			123	123		

4 Data and refinement statistics

Property	Value	Source
Space group	P 21 21 21	Depositor
Cell constants a, b, c, α , β , γ	61.56Å 70.90Å 71.94Å 90.00° 90.00° 90.00°	Depositor
Resolution (Å)	46.77 – 2.01 46.77 – 2.01	Depositor EDS
% Data completeness (in resolution range)	99.3 (46.77-2.01) 99.3 (46.77-2.01)	Depositor EDS
R_{merge}	0.24	Depositor
R_{sym}	(Not available)	Depositor
$\langle I/\sigma(I) \rangle$ ¹	1.70 (at 2.01Å)	Xtrriage
Refinement program	PHENIX 1.14	Depositor
R, R_{free}	0.163 , 0.211 0.164 , 0.211	Depositor DCC
R_{free} test set	1115 reflections (5.18%)	wwPDB-VP
Wilson B-factor (Å ²)	20.3	Xtrriage
Anisotropy	0.183	Xtrriage
Bulk solvent k_{sol} (e/Å ³), B_{sol} (Å ²)	0.38 , 53.6	EDS
L-test for twinning ²	$\langle L \rangle = 0.48$, $\langle L^2 \rangle = 0.32$	Xtrriage
Estimated twinning fraction	0.026 for -h,l,k	Xtrriage
F_o, F_c correlation	0.95	EDS
Total number of atoms	2960	wwPDB-VP
Average B, all atoms (Å ²)	22.0	wwPDB-VP

Xtrriage's analysis on translational NCS is as follows: *The largest off-origin peak in the Patterson function is 6.62% of the height of the origin peak. No significant pseudotranslation is detected.*

¹Intensities estimated from amplitudes.

²Theoretical values of $\langle |L| \rangle$, $\langle L^2 \rangle$ for acentric reflections are 0.5, 0.333 respectively for untwinned datasets, and 0.375, 0.2 for perfectly twinned datasets.

5 Model quality [i](#)

5.1 Standard geometry [i](#)

Bond lengths and bond angles in the following residue types are not validated in this section: CO, PO4, NAP, GOL, RKY

The Z score for a bond length (or angle) is the number of standard deviations the observed value is removed from the expected value. A bond length (or angle) with $|Z| > 5$ is considered an outlier worth inspection. RMSZ is the root-mean-square of all Z scores of the bond lengths (or angles).

Mol	Chain	Bond lengths		Bond angles	
		RMSZ	# Z >5	RMSZ	# Z >5
1	A	0.32	0/1275	0.56	0/1732
1	B	0.33	0/1275	0.56	1/1732 (0.1%)
All	All	0.33	0/2550	0.56	1/3464 (0.0%)

There are no bond length outliers.

All (1) bond angle outliers are listed below:

Mol	Chain	Res	Type	Atoms	Z	Observed(°)	Ideal(°)
1	B	32	ARG	NE-CZ-NH2	5.61	124.25	119.20

There are no chirality outliers.

There are no planarity outliers.

5.2 Too-close contacts [i](#)

In the following table, the Non-H and H(model) columns list the number of non-hydrogen atoms and hydrogen atoms in the chain respectively. The H(added) column lists the number of hydrogen atoms added and optimized by MolProbity. The Clashes column lists the number of clashes within the asymmetric unit, whereas Symm-Clashes lists symmetry-related clashes.

Mol	Chain	Non-H	H(model)	H(added)	Clashes	Symm-Clashes
1	A	1244	0	1223	11	0
1	B	1244	0	1222	17	0
2	A	18	0	0	0	0
2	B	36	0	0	0	0
3	A	1	0	0	0	0
3	B	1	0	0	0	0
4	A	48	0	25	1	0
4	B	48	0	25	2	0

Continued on next page...

Continued from previous page...

Mol	Chain	Non-H	H(model)	H(added)	Clashes	Symm-Clashes
5	A	6	0	8	2	0
5	B	6	0	7	1	0
6	A	5	0	0	0	0
6	B	10	0	0	0	0
7	A	170	0	0	3	0
7	B	123	0	0	3	0
All	All	2960	0	2510	25	0

The all-atom clashscore is defined as the number of clashes found per 1000 atoms (including hydrogen atoms). The all-atom clashscore for this structure is 5.

All (25) close contacts within the same asymmetric unit are listed below, sorted by their clash magnitude.

Atom-1	Atom-2	Interatomic distance (Å)	Clash overlap (Å)
1:A:138:GLU:OE1	7:A:301:HOH:O	1.99	0.80
1:B:7:ALA:H	4:B:204:NAP:H72N	1.26	0.78
1:A:72:MET:HA	1:A:72:MET:HE2	1.71	0.73
1:A:72:MET:SD	7:A:446:HOH:O	2.53	0.66
1:A:27:ASP:HB3	5:A:204:GOL:H11	1.84	0.59
1:A:33:GLU:HB2	1:B:136:ARG:NH2	2.20	0.57
1:A:138:GLU:HG2	1:B:153:LEU:HD12	1.88	0.55
1:B:24:LEU:HD23	1:B:27:ASP:HB2	1.89	0.54
1:B:1:MET:HE3	1:B:90:GLU:HG3	1.93	0.50
1:B:67:ARG:NH1	7:B:309:HOH:O	2.43	0.50
1:A:14:ILE:O	4:A:203:NAP:H2N	2.15	0.47
1:A:24:LEU:H	5:A:204:GOL:H12	1.81	0.45
1:B:132:ASP:O	7:B:301:HOH:O	2.21	0.44
1:B:143:ARG:NH1	7:B:311:HOH:O	2.50	0.44
1:B:53:LYS:N	1:B:53:LYS:HD3	2.32	0.44
1:B:72:MET:HE2	1:B:72:MET:HB3	1.90	0.44
1:B:68:GLN:HB2	1:B:71:PHE:HB2	2.01	0.43
1:A:33:GLU:HB2	1:B:136:ARG:HH21	1.84	0.43
1:B:6:TRP:HB3	1:B:100:TYR:CZ	2.55	0.42
1:B:65:LEU:HG	4:B:204:NAP:N3A	2.35	0.41
1:A:63:VAL:HG11	1:A:85:ALA:HB2	2.02	0.41
1:A:143:ARG:NH1	7:A:315:HOH:O	2.53	0.40
1:B:6:TRP:CH2	1:B:129:PRO:HG2	2.56	0.40
1:B:28:GLN:HE21	5:B:205:GOL:H32	1.86	0.40
1:B:116:ASP:HB2	1:B:142:TRP:CZ3	2.56	0.40

There are no symmetry-related clashes.

5.3 Torsion angles [i](#)

5.3.1 Protein backbone [i](#)

In the following table, the Percentiles column shows the percent Ramachandran outliers of the chain as a percentile score with respect to all X-ray entries followed by that with respect to entries of similar resolution.

The Analysed column shows the number of residues for which the backbone conformation was analysed, and the total number of residues.

Mol	Chain	Analysed	Favoured	Allowed	Outliers	Percentiles	
1	A	157/161 (98%)	153 (98%)	4 (2%)	0	100	100
1	B	157/161 (98%)	152 (97%)	5 (3%)	0	100	100
All	All	314/322 (98%)	305 (97%)	9 (3%)	0	100	100

There are no Ramachandran outliers to report.

5.3.2 Protein sidechains [i](#)

In the following table, the Percentiles column shows the percent sidechain outliers of the chain as a percentile score with respect to all X-ray entries followed by that with respect to entries of similar resolution.

The Analysed column shows the number of residues for which the sidechain conformation was analysed, and the total number of residues.

Mol	Chain	Analysed	Rotameric	Outliers	Percentiles	
1	A	127/129 (98%)	127 (100%)	0	100	100
1	B	127/129 (98%)	126 (99%)	1 (1%)	73	75
All	All	254/258 (98%)	253 (100%)	1 (0%)	84	84

All (1) residues with a non-rotameric sidechain are listed below:

Mol	Chain	Res	Type
1	B	159	SER

Sometimes sidechains can be flipped to improve hydrogen bonding and reduce clashes. All (1) such sidechains are listed below:

Mol	Chain	Res	Type
1	B	28	GLN

5.3.3 RNA [i](#)

There are no RNA molecules in this entry.

5.4 Non-standard residues in protein, DNA, RNA chains [i](#)

There are no non-standard protein/DNA/RNA residues in this entry.

5.5 Carbohydrates [i](#)

There are no oligosaccharides in this entry.

5.6 Ligand geometry [i](#)

Of 12 ligands modelled in this entry, 2 are monoatomic - leaving 10 for Mogul analysis.

In the following table, the Counts columns list the number of bonds (or angles) for which Mogul statistics could be retrieved, the number of bonds (or angles) that are observed in the model and the number of bonds (or angles) that are defined in the Chemical Component Dictionary. The Link column lists molecule types, if any, to which the group is linked. The Z score for a bond length (or angle) is the number of standard deviations the observed value is removed from the expected value. A bond length (or angle) with $|Z| > 2$ is considered an outlier worth inspection. RMSZ is the root-mean-square of all Z scores of the bond lengths (or angles).

Mol	Type	Chain	Res	Link	Bond lengths			Bond angles		
					Counts	RMSZ	# Z > 2	Counts	RMSZ	# Z > 2
5	GOL	B	205	-	5,5,5	0.77	0	5,5,5	1.58	1 (20%)
4	NAP	A	203	-	50,52,52	2.79	17 (34%)	71,80,80	1.77	15 (21%)
2	RKY	A	201	-	19,19,19	2.33	6 (31%)	25,25,25	1.06	2 (8%)
2	RKY	B	201	-	19,19,19	2.71	10 (52%)	25,25,25	2.55	11 (44%)
6	PO4	B	206	-	4,4,4	0.96	0	6,6,6	0.49	0
6	PO4	B	207	-	4,4,4	0.78	0	6,6,6	0.65	0
2	RKY	B	202	-	19,19,19	2.39	6 (31%)	25,25,25	1.10	2 (8%)
4	NAP	B	204	-	50,52,52	3.01	13 (26%)	71,80,80	1.87	15 (21%)
5	GOL	A	204	-	5,5,5	0.56	0	5,5,5	0.84	0
6	PO4	A	205	-	4,4,4	0.99	0	6,6,6	0.48	0

In the following table, the Chirals column lists the number of chiral outliers, the number of chiral centers analysed, the number of these observed in the model and the number defined in the Chemical Component Dictionary. Similar counts are reported in the Torsion and Rings columns. '-' means no outliers of that kind were identified.

Mol	Type	Chain	Res	Link	Chirals	Torsions	Rings
5	GOL	B	205	-	-	0/4/4/4	-
4	NAP	A	203	-	-	5/35/67/67	0/5/5/5
2	RKY	A	201	-	-	0/9/17/17	0/2/2/2
2	RKY	B	201	-	-	2/9/17/17	0/2/2/2
2	RKY	B	202	-	-	2/9/17/17	0/2/2/2
4	NAP	B	204	-	-	6/35/67/67	0/5/5/5
5	GOL	A	204	-	-	0/4/4/4	-

All (52) bond length outliers are listed below:

Mol	Chain	Res	Type	Atoms	Z	Observed(Å)	Ideal(Å)
4	B	204	NAP	P2B-O2B	11.94	1.80	1.59
4	A	203	NAP	P2B-O2B	10.91	1.78	1.59
4	B	204	NAP	PA-O3	8.37	1.68	1.59
4	B	204	NAP	C4N-C3N	7.15	1.50	1.39
4	A	203	NAP	C4N-C3N	6.78	1.49	1.39
4	B	204	NAP	C5N-C4N	6.65	1.50	1.38
4	A	203	NAP	PA-O3	6.52	1.66	1.59
4	A	203	NAP	C5N-C4N	5.97	1.49	1.38
2	B	202	RKY	C05-C06	5.68	1.59	1.51
2	B	201	RKY	O16-C17	5.68	1.48	1.38
2	B	201	RKY	C08-C06	5.41	1.57	1.49
2	A	201	RKY	C05-C06	5.18	1.59	1.51
2	B	201	RKY	C05-C06	4.90	1.58	1.51
4	B	204	NAP	C3N-C7N	-4.70	1.43	1.50
2	A	201	RKY	O16-C17	4.60	1.46	1.38
2	B	202	RKY	O16-C17	4.54	1.46	1.38
4	B	204	NAP	PN-O5D	4.49	1.77	1.59
2	A	201	RKY	C08-C06	4.09	1.55	1.49
2	B	202	RKY	C08-C06	3.86	1.55	1.49
4	A	203	NAP	C2N-N1N	3.76	1.39	1.35
4	A	203	NAP	O4D-C1D	3.69	1.45	1.40
4	B	204	NAP	PN-O3	3.64	1.63	1.59
4	B	204	NAP	O2B-C2B	-3.40	1.32	1.44
4	A	203	NAP	PN-O5D	3.24	1.72	1.59
2	B	201	RKY	O07-C06	-3.18	1.16	1.22
4	A	203	NAP	O2B-C2B	-3.00	1.33	1.44
4	B	204	NAP	C2N-N1N	2.95	1.38	1.35
4	B	204	NAP	C6N-N1N	2.85	1.41	1.35
2	B	202	RKY	O07-C06	-2.83	1.17	1.22
2	B	201	RKY	O12-C11	2.81	1.43	1.38
4	A	203	NAP	C6N-N1N	2.81	1.41	1.35

Continued on next page...

Continued from previous page...

Mol	Chain	Res	Type	Atoms	Z	Observed(Å)	Ideal(Å)
2	A	201	RKY	O12-C11	2.76	1.43	1.38
2	A	201	RKY	O07-C06	-2.67	1.17	1.22
2	B	202	RKY	O12-C11	2.62	1.43	1.38
4	A	203	NAP	C3B-C2B	2.51	1.58	1.53
4	A	203	NAP	C5A-C4A	2.47	1.43	1.39
4	B	204	NAP	C2N-C3N	-2.34	1.35	1.39
4	A	203	NAP	C6N-C5N	-2.17	1.34	1.38
2	B	201	RKY	O16-C15	-2.16	1.39	1.44
4	A	203	NAP	C2A-N1A	2.15	1.37	1.33
2	A	201	RKY	O16-C15	-2.15	1.39	1.44
4	B	204	NAP	C2A-N1A	2.11	1.37	1.33
2	B	202	RKY	O16-C15	-2.09	1.39	1.44
2	B	201	RKY	C09-C08	2.07	1.42	1.39
4	A	203	NAP	O4B-C4B	-2.07	1.40	1.45
4	A	203	NAP	C8A-N7A	2.05	1.35	1.31
4	A	203	NAP	C8A-N9A	2.03	1.41	1.37
2	B	201	RKY	C04-C02	2.03	1.55	1.50
4	A	203	NAP	C7N-N7N	2.01	1.36	1.33
2	B	201	RKY	C10-C11	2.01	1.43	1.39
4	B	204	NAP	C4A-N3A	2.00	1.38	1.34
2	B	201	RKY	C14-C13	2.00	1.56	1.51

All (46) bond angle outliers are listed below:

Mol	Chain	Res	Type	Atoms	Z	Observed(°)	Ideal(°)
4	B	204	NAP	C5N-C4N-C3N	-8.50	112.01	120.36
4	A	203	NAP	C5N-C4N-C3N	-7.83	112.67	120.36
2	B	201	RKY	C18-C08-C06	-5.39	108.45	120.18
2	B	201	RKY	O12-C11-C17	-5.07	117.98	123.24
2	B	201	RKY	C09-C08-C06	5.04	131.90	120.60
4	B	204	NAP	O7N-C7N-C3N	5.02	125.73	119.60
4	A	203	NAP	O7N-C7N-C3N	4.05	124.55	119.60
4	A	203	NAP	O7N-C7N-N7N	-3.85	117.05	122.62
4	B	204	NAP	O2B-P2B-O1X	-3.70	96.16	109.33
2	B	201	RKY	O16-C17-C11	3.69	127.06	123.24
2	B	201	RKY	C05-C06-C08	3.69	124.22	119.07
4	B	204	NAP	C2N-C3N-C4N	3.69	122.55	118.26
2	B	201	RKY	O07-C06-C08	-3.40	116.18	120.73
4	A	203	NAP	O2B-P2B-O1X	-3.31	97.52	109.33
4	A	203	NAP	C2N-C3N-C4N	3.19	121.97	118.26
4	B	204	NAP	P2B-O2B-C2B	-2.92	115.63	123.43
2	B	201	RKY	O01-C02-C04	2.79	122.80	114.00

Continued on next page...

Continued from previous page...

Mol	Chain	Res	Type	Atoms	Z	Observed(°)	Ideal(°)
4	B	204	NAP	C3N-C7N-N7N	-2.79	114.31	117.74
2	B	202	RKY	O16-C17-C11	-2.75	120.39	123.24
4	A	203	NAP	O3X-P2B-O2X	2.67	117.81	107.80
5	B	205	GOL	C3-C2-C1	-2.65	102.08	111.80
4	B	204	NAP	O3X-P2B-O2X	2.56	117.40	107.80
4	A	203	NAP	C4D-O4D-C1D	-2.52	107.62	109.92
2	B	201	RKY	C04-C05-C06	-2.48	109.57	112.60
4	A	203	NAP	C3B-C2B-C1B	-2.47	98.07	102.81
2	B	201	RKY	O16-C15-C14	-2.47	107.63	112.80
4	B	204	NAP	PA-O5B-C5B	-2.42	107.47	121.35
4	B	204	NAP	C6N-N1N-C2N	-2.42	119.82	121.88
4	A	203	NAP	C6N-C5N-C4N	2.41	122.92	119.45
2	B	201	RKY	O16-C17-C18	-2.36	113.00	116.83
4	A	203	NAP	PA-O5B-C5B	-2.28	108.30	121.35
4	B	204	NAP	C2B-C3B-C4B	-2.28	97.10	101.99
4	A	203	NAP	O3X-P2B-O2B	-2.27	97.00	105.85
2	A	201	RKY	O01-C02-C04	2.25	121.10	114.00
4	B	204	NAP	C4D-O4D-C1D	-2.25	107.87	109.92
2	A	201	RKY	C15-O16-C17	-2.20	112.48	116.13
4	A	203	NAP	O2A-PA-O3	2.19	113.18	107.27
4	B	204	NAP	N3A-C4A-N9A	2.13	130.79	127.17
4	B	204	NAP	C6N-C5N-C4N	2.12	122.51	119.45
4	A	203	NAP	C6N-N1N-C2N	-2.09	120.10	121.88
2	B	202	RKY	O01-C02-C04	2.09	120.60	114.00
4	B	204	NAP	C3B-C2B-C1B	-2.08	98.83	102.81
4	A	203	NAP	C2A-N1A-C6A	-2.05	115.37	118.73
2	B	201	RKY	C09-C10-C11	-2.04	116.19	120.06
4	A	203	NAP	O2B-C2B-C1B	-2.03	102.91	110.05
4	B	204	NAP	C2A-N1A-C6A	-2.02	115.41	118.73

There are no chirality outliers.

All (15) torsion outliers are listed below:

Mol	Chain	Res	Type	Atoms
4	A	203	NAP	PA-O3-PN-O5D
4	A	203	NAP	O4D-C1D-N1N-C6N
4	A	203	NAP	C2D-C1D-N1N-C2N
4	B	204	NAP	PA-O3-PN-O5D
4	B	204	NAP	O4D-C1D-N1N-C2N
4	B	204	NAP	O4D-C1D-N1N-C6N
4	A	203	NAP	C5B-O5B-PA-O1A
4	B	204	NAP	C5B-O5B-PA-O1A

Continued on next page...

Continued from previous page...

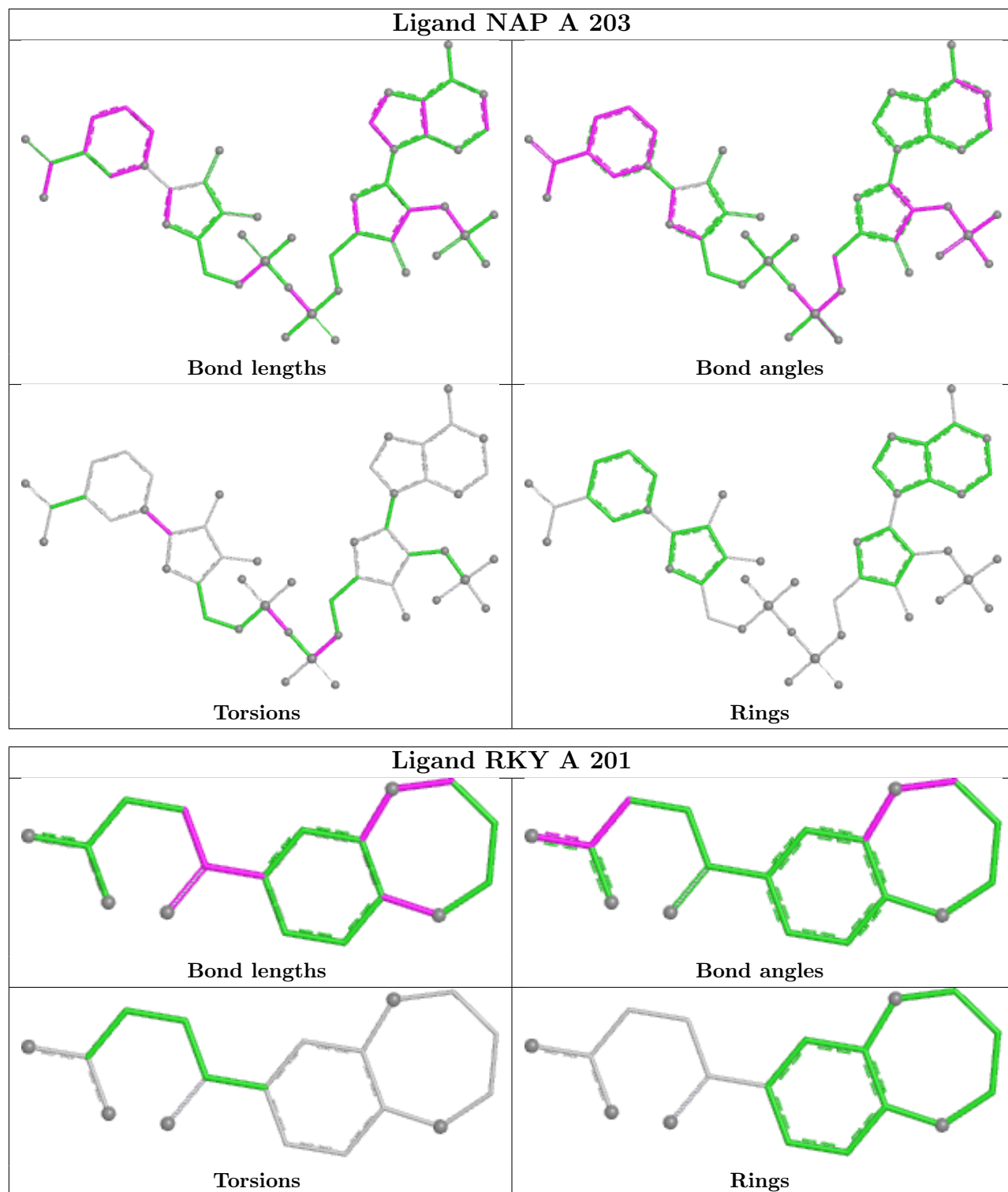
Mol	Chain	Res	Type	Atoms
4	B	204	NAP	C2D-C1D-N1N-C2N
4	B	204	NAP	C2D-C1D-N1N-C6N
2	B	202	RKY	O01-C02-C04-C05
4	A	203	NAP	O4D-C1D-N1N-C2N
2	B	202	RKY	O03-C02-C04-C05
2	B	201	RKY	O01-C02-C04-C05
2	B	201	RKY	O03-C02-C04-C05

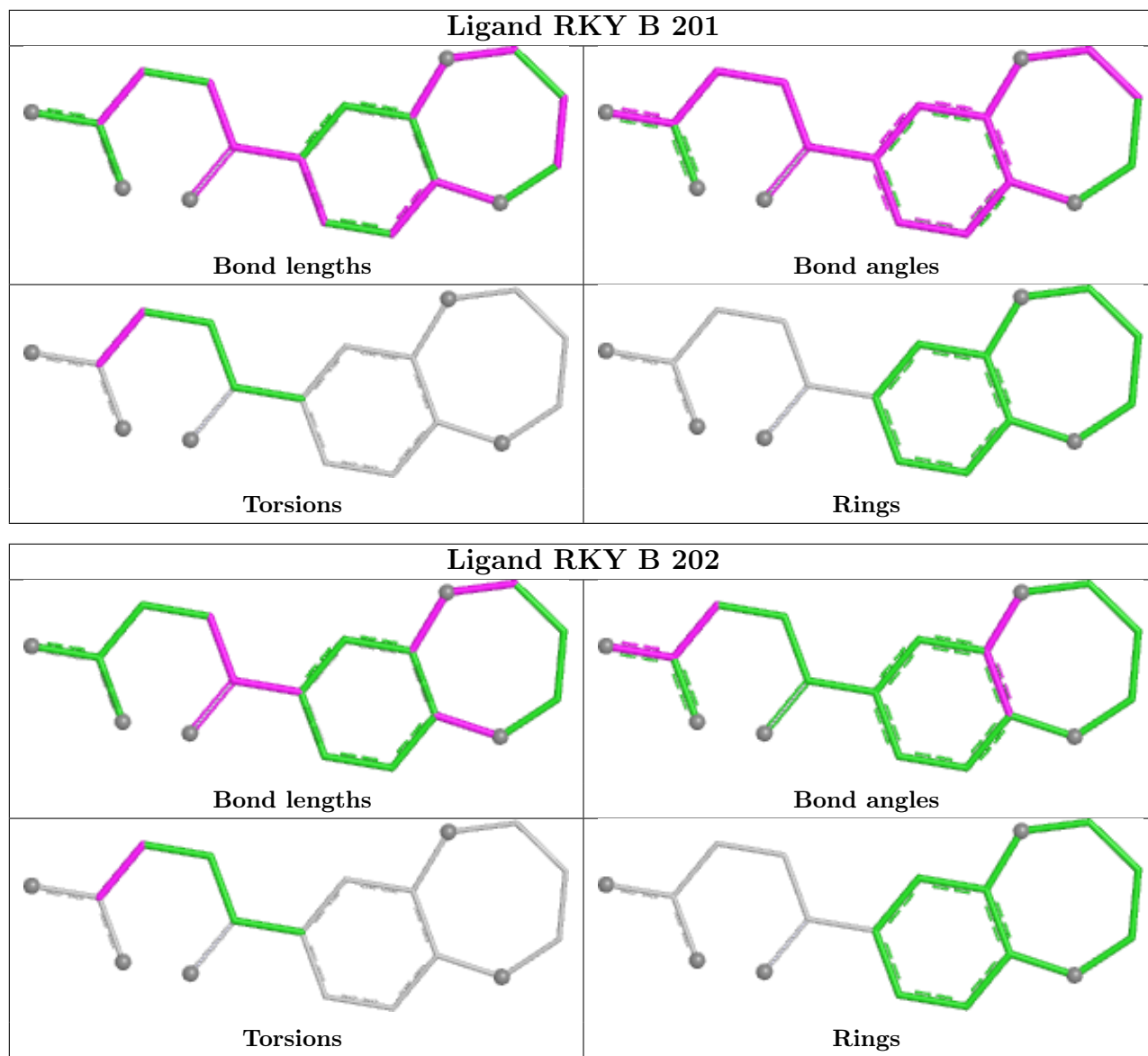
There are no ring outliers.

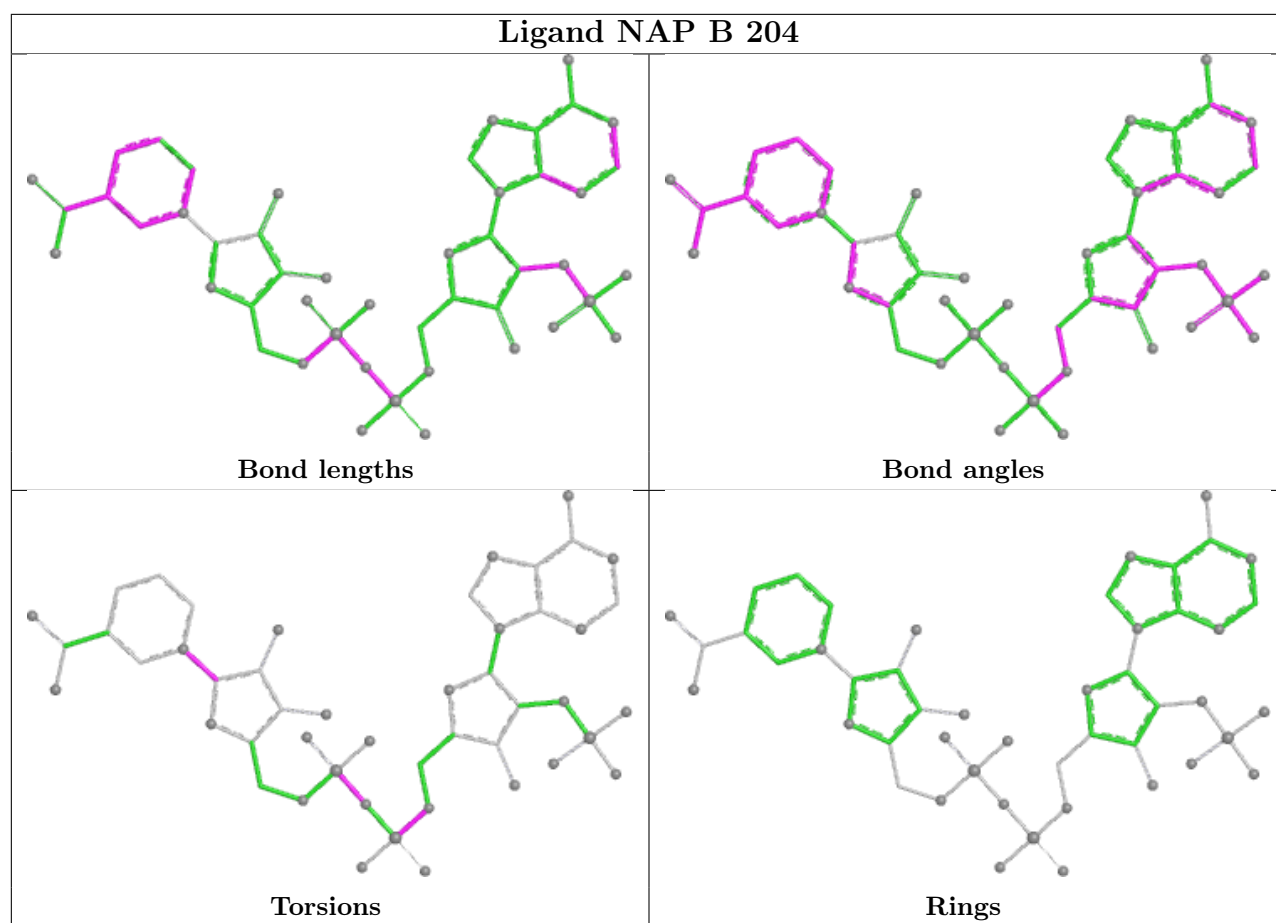
4 monomers are involved in 6 short contacts:

Mol	Chain	Res	Type	Clashes	Symm-Clashes
5	B	205	GOL	1	0
4	A	203	NAP	1	0
4	B	204	NAP	2	0
5	A	204	GOL	2	0

The following is a two-dimensional graphical depiction of Mogul quality analysis of bond lengths, bond angles, torsion angles, and ring geometry for all instances of the Ligand of Interest. In addition, ligands with molecular weight > 250 and outliers as shown on the validation Tables will also be included. For torsion angles, if less than 5% of the Mogul distribution of torsion angles is within 10 degrees of the torsion angle in question, then that torsion angle is considered an outlier. Any bond that is central to one or more torsion angles identified as an outlier by Mogul will be highlighted in the graph. For rings, the root-mean-square deviation (RMSD) between the ring in question and similar rings identified by Mogul is calculated over all ring torsion angles. If the average RMSD is greater than 60 degrees and the minimal RMSD between the ring in question and any Mogul-identified rings is also greater than 60 degrees, then that ring is considered an outlier. The outliers are highlighted in purple. The color gray indicates Mogul did not find sufficient equivalents in the CSD to analyse the geometry.







5.7 Other polymers [\(i\)](#)

There are no such residues in this entry.

5.8 Polymer linkage issues [\(i\)](#)

There are no chain breaks in this entry.

6 Fit of model and data [i](#)

6.1 Protein, DNA and RNA chains [i](#)

In the following table, the column labelled ‘#RSRZ> 2’ contains the number (and percentage) of RSRZ outliers, followed by percent RSRZ outliers for the chain as percentile scores relative to all X-ray entries and entries of similar resolution. The OWAB column contains the minimum, median, 95th percentile and maximum values of the occupancy-weighted average B-factor per residue. The column labelled ‘Q< 0.9’ lists the number of (and percentage) of residues with an average occupancy less than 0.9.

Mol	Chain	Analysed	<RSRZ>	#RSRZ>2	OWAB(Å ²)	Q<0.9
1	A	159/161 (98%)	-0.54	0 100 100	8, 17, 38, 45	0
1	B	159/161 (98%)	-0.22	6 (3%) 44 43	10, 20, 45, 64	0
All	All	318/322 (98%)	-0.38	6 (1%) 66 66	8, 18, 42, 64	0

All (6) RSRZ outliers are listed below:

Mol	Chain	Res	Type	RSRZ
1	B	87	THR	3.7
1	B	88	SER	3.4
1	B	144	PHE	3.3
1	B	117	ILE	2.4
1	B	70	ASP	2.0
1	B	69	ALA	2.0

6.2 Non-standard residues in protein, DNA, RNA chains [i](#)

There are no non-standard protein/DNA/RNA residues in this entry.

6.3 Carbohydrates [i](#)

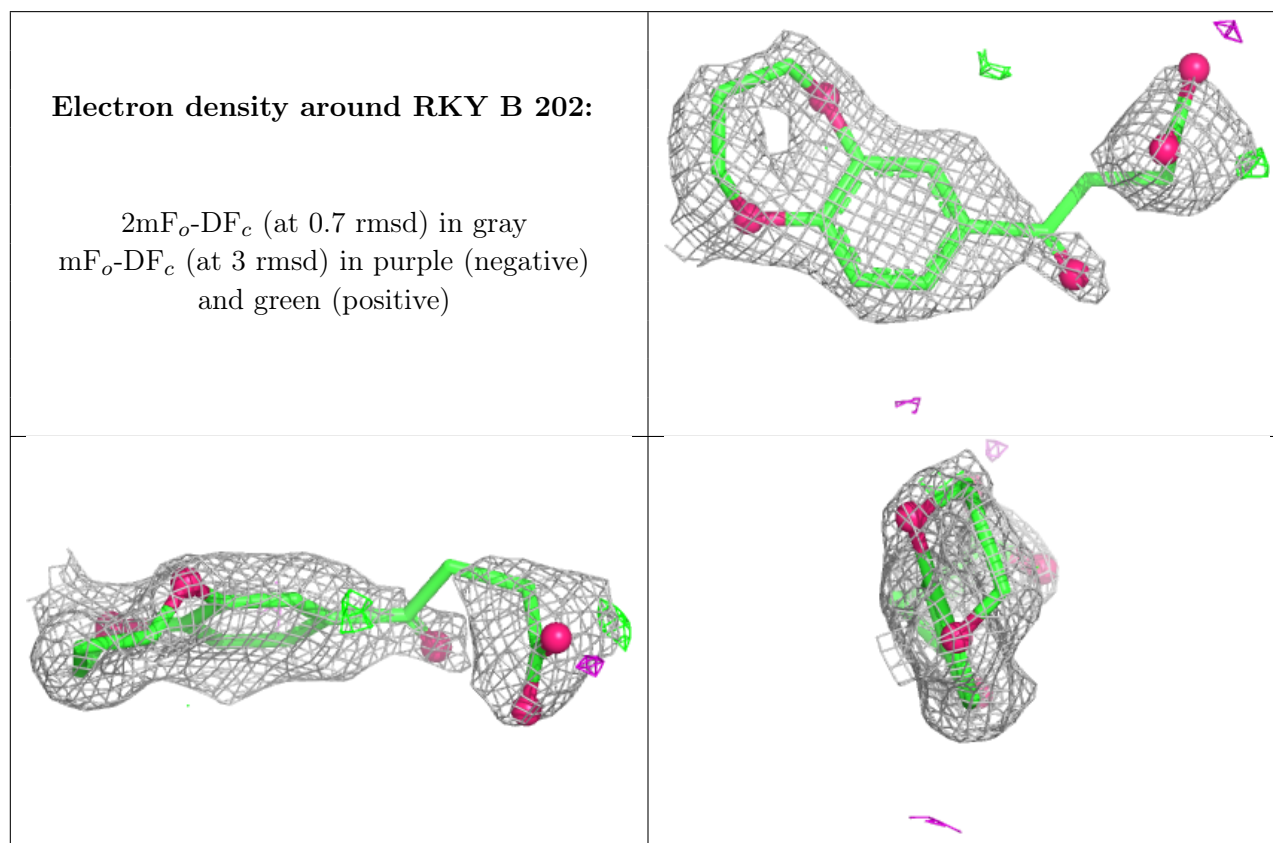
There are no oligosaccharides in this entry.

6.4 Ligands [i](#)

In the following table, the Atoms column lists the number of modelled atoms in the group and the number defined in the chemical component dictionary. The B-factors column lists the minimum, median, 95th percentile and maximum values of B factors of atoms in the group. The column labelled ‘Q< 0.9’ lists the number of atoms with occupancy less than 0.9.

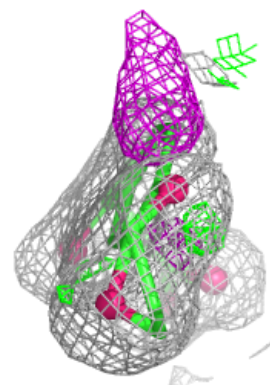
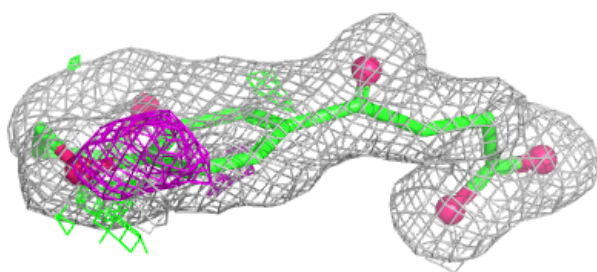
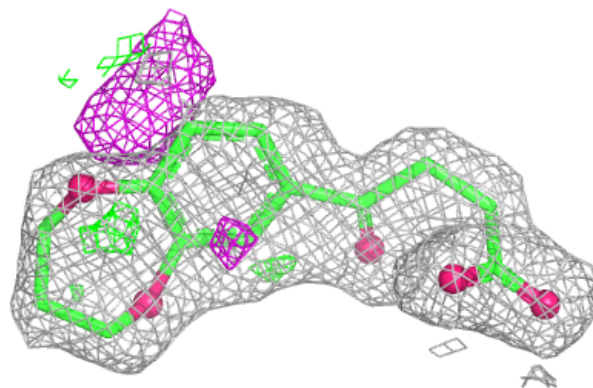
Mol	Type	Chain	Res	Atoms	RSCC	RSR	B-factors(\AA^2)	Q<0.9
5	GOL	B	205	6/6	0.77	0.22	23,41,51,59	0
2	RKY	B	202	18/18	0.80	0.14	21,31,48,50	18
6	PO4	B	207	5/5	0.82	0.16	48,53,59,66	0
6	PO4	B	206	5/5	0.84	0.11	57,59,61,68	0
5	GOL	A	204	6/6	0.84	0.17	22,41,44,50	0
6	PO4	A	205	5/5	0.86	0.13	50,54,58,60	0
2	RKY	B	201	18/18	0.90	0.10	14,28,41,43	0
2	RKY	A	201	18/18	0.96	0.06	12,21,32,33	0
4	NAP	B	204	48/48	0.97	0.06	3,17,25,28	0
4	NAP	A	203	48/48	0.98	0.04	7,12,18,21	0
3	CO	B	203	1/1	0.99	0.02	25,25,25,25	0
3	CO	A	202	1/1	1.00	0.01	17,17,17,17	0

The following is a graphical depiction of the model fit to experimental electron density of all instances of the Ligand of Interest. In addition, ligands with molecular weight > 250 and outliers as shown on the geometry validation Tables will also be included. Each fit is shown from different orientation to approximate a three-dimensional view.

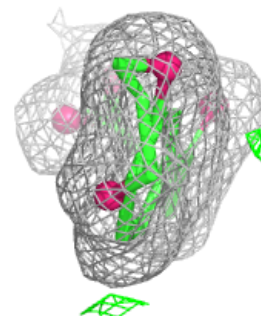
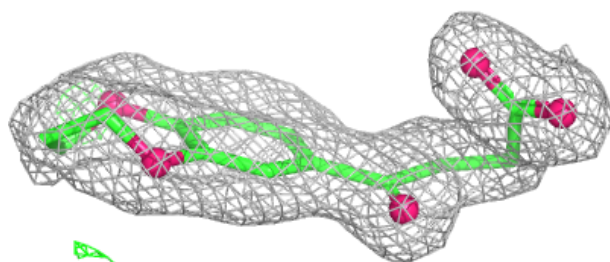
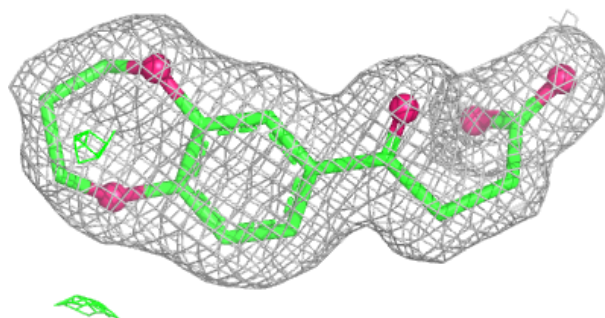


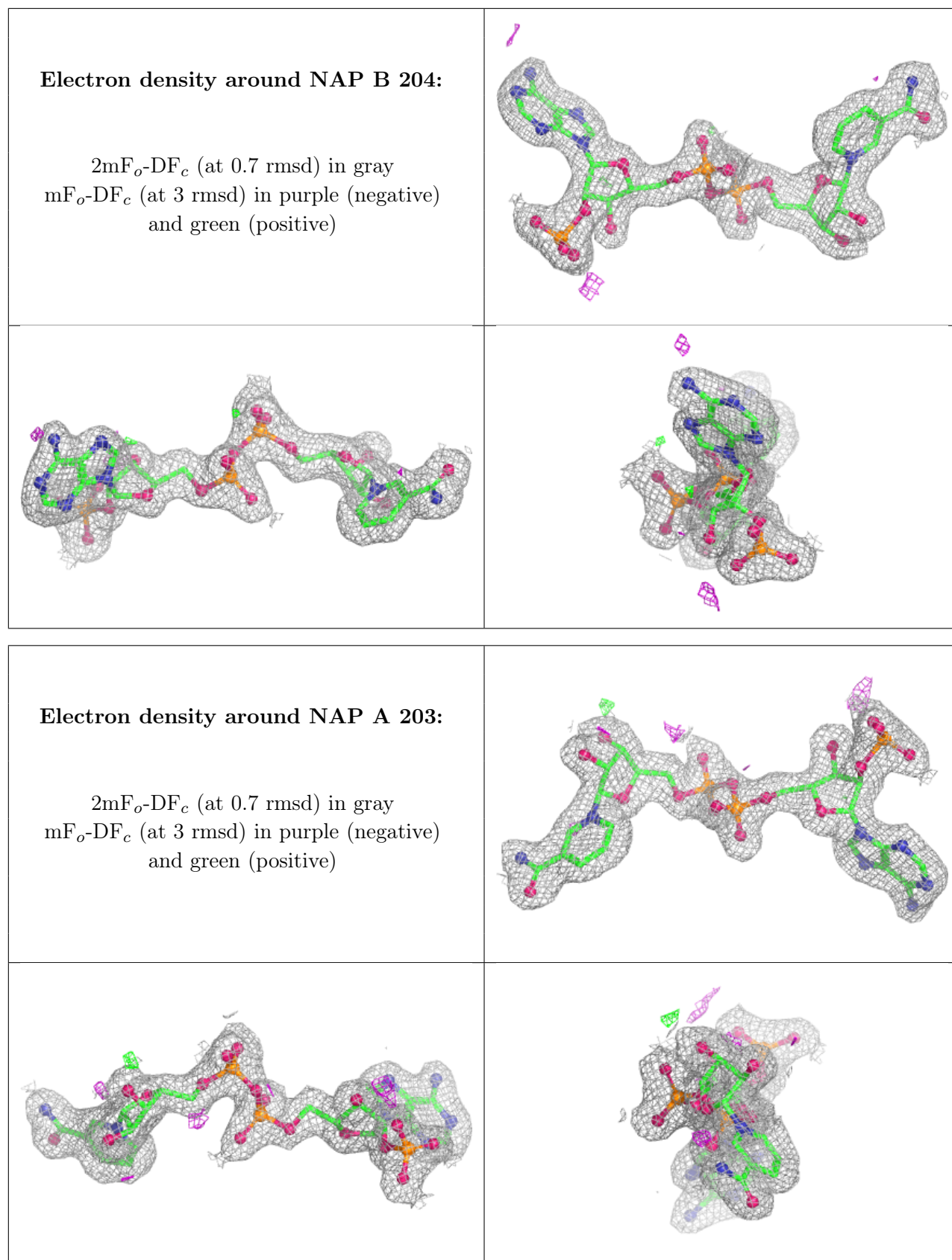
Electron density around RKY B 201:

$2mF_o-DF_c$ (at 0.7 rmsd) in gray
 mF_o-DF_c (at 3 rmsd) in purple (negative)
and green (positive)

**Electron density around RKY A 201:**

$2mF_o-DF_c$ (at 0.7 rmsd) in gray
 mF_o-DF_c (at 3 rmsd) in purple (negative)
and green (positive)





6.5 Other polymers [i](#)

There are no such residues in this entry.