



wwPDB X-ray Structure Validation Summary Report ⓘ

Mar 9, 2026 – 05:29 AM UTC

PDB ID : 3WFE / pdb_00003wfe
Title : Reduced and cyanide-bound cytochrome c-dependent nitric oxide reductase (cNOR) from *Pseudomonas aeruginosa* in complex with antibody fragment
Authors : Sato, N.; Ishii, S.; Hino, T.; Sugimoto, H.; Fukumori, Y.; Shiro, Y.; Tosha, T.
Deposited on : 2013-07-18
Resolution : 2.49 Å (reported)

This is a wwPDB X-ray Structure Validation Summary Report for a publicly released PDB entry.

We welcome your comments at validation@mail.wwpdb.org

A user guide is available at

<https://www.wwpdb.org/validation/2017/XrayValidationReportHelp>

with specific help available everywhere you see the ⓘ symbol.

The types of validation reports are described at

<http://www.wwpdb.org/validation/2017/FAQs#types>.

The following versions of software and data (see [references ⓘ](#)) were used in the production of this report:

MolProbity : 4-5-2 with Phenix2.0
Mogul : 2022.3.0, CSD as543be (2022)
Xtriage (Phenix) : 2.0
EDS : 3.0
Buster-report : wwPDB partial adaption of 1.1.7 (2018)
Percentile statistics : 20250101.v01 (using entries in the PDB archive January 1st 2025)
CCP4 : 9.0.010 (Gargrove)
Density-Fitness : 1.0.12
Ideal geometry (proteins) : Engh & Huber (2001)
Ideal geometry (DNA, RNA) : Parkinson et al. (1996)
Validation Pipeline (wwPDB-VP) : 2.49

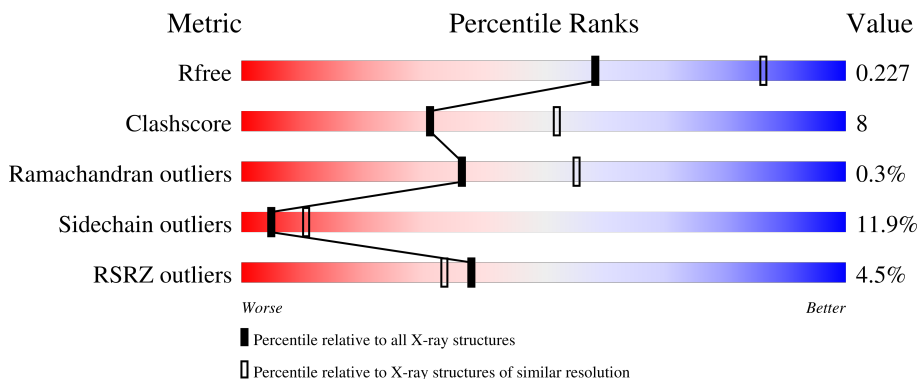
1 Overall quality at a glance

The following experimental techniques were used to determine the structure:

X-RAY DIFFRACTION

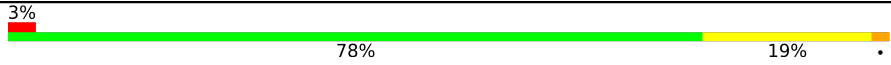



The reported resolution of this entry is 2.49 Å.

Percentile scores (ranging between 0-100) for global validation metrics of the entry are shown in the following graphic. The table shows the number of entries on which the scores are based.



Metric	Whole archive (#Entries)	Similar resolution (#Entries, resolution range(Å))
R_{free}	180053	5829 (2.50-2.50)
Clashscore	190562	6492 (2.50-2.50)
Ramachandran outliers	187476	6378 (2.50-2.50)
Sidechain outliers	187428	6380 (2.50-2.50)
RSRZ outliers	180081	5833 (2.50-2.50)

The table below summarises the geometric issues observed across the polymeric chains and their fit to the electron density. The red, orange, yellow and green segments of the lower bar indicate the fraction of residues that contain outliers for ≥ 3 , 2, 1 and 0 types of geometric quality criteria respectively. A grey segment represents the fraction of residues that are not modelled. The numeric value for each fraction is indicated below the corresponding segment, with a dot representing fractions $\leq 5\%$. The upper red bar (where present) indicates the fraction of residues that have poor fit to the electron density. The numeric value is given above the bar.

Mol	Chain	Length	Quality of chain
1	L	213	
2	H	225	
3	B	465	
4	C	146	

2 Entry composition [i](#)

There are 11 unique types of molecules in this entry. The entry contains 8503 atoms, of which 0 are hydrogens and 0 are deuteriums.

In the tables below, the ZeroOcc column contains the number of atoms modelled with zero occupancy, the AltConf column contains the number of residues with at least one atom in alternate conformation and the Trace column contains the number of residues modelled with at most 2 atoms.

- Molecule 1 is a protein called antibody fab fragment light chain.

Mol	Chain	Residues	Atoms					ZeroOcc	AltConf	Trace
			Total	C	N	O	S			
1	L	213	1669	1047	277	338	7	0	0	0

- Molecule 2 is a protein called antibody fab fragment heavy chain.

Mol	Chain	Residues	Atoms					ZeroOcc	AltConf	Trace
			Total	C	N	O	S			
2	H	225	1692	1065	280	338	9	0	0	0

- Molecule 3 is a protein called Nitric oxide reductase subunit B.

Mol	Chain	Residues	Atoms					ZeroOcc	AltConf	Trace
			Total	C	N	O	S			
3	B	449	3576	2416	563	572	25	0	0	0

There is a discrepancy between the modelled and reference sequences:

Chain	Residue	Modelled	Actual	Comment	Reference
B	?	-	ARG	deletion	UNP Q59647

- Molecule 4 is a protein called Nitric oxide reductase subunit C.

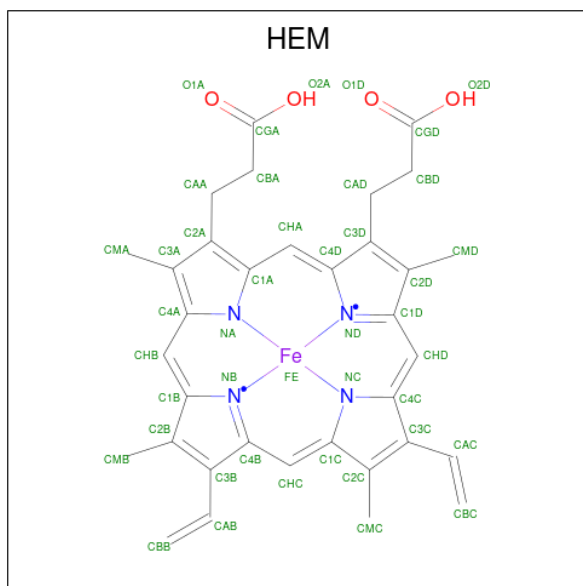
Mol	Chain	Residues	Atoms					ZeroOcc	AltConf	Trace
			Total	C	N	O	S			
4	C	142	1123	720	195	202	6	0	0	0

There is a discrepancy between the modelled and reference sequences:

Chain	Residue	Modelled	Actual	Comment	Reference
C	100	LYS	ASN	conflict	UNP Q59646

- Molecule 5 is PROTOPORPHYRIN IX CONTAINING FE (CCD ID: HEM) (formula:

$C_{34}H_{32}FeN_4O_4$).

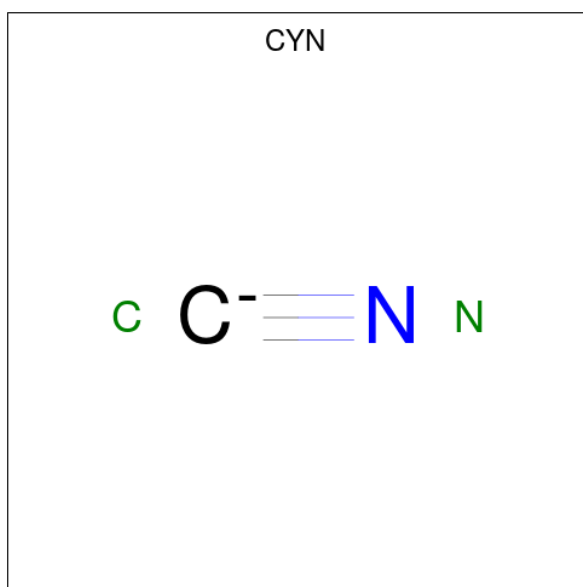


Mol	Chain	Residues	Atoms				ZeroOcc	AltConf	
5	B	1	Total	C	Fe	N	O	0	0
			43	34	1	4	4		
5	B	1	Total	C	Fe	N	O	0	0
			43	34	1	4	4		

- Molecule 6 is FE (III) ION (CCD ID: FE) (formula: Fe).

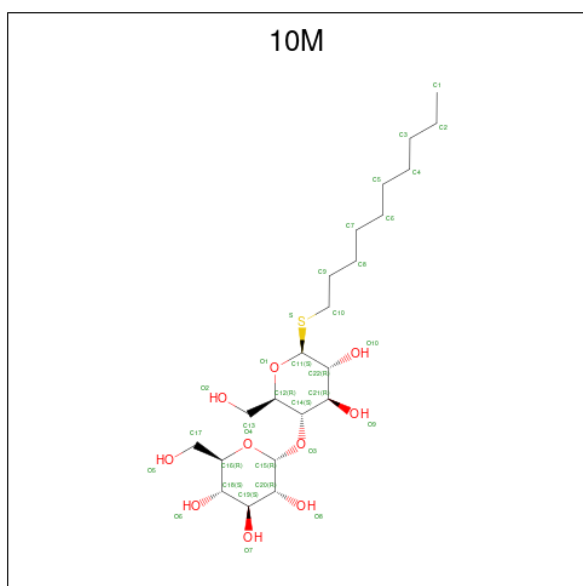
Mol	Chain	Residues	Atoms		ZeroOcc	AltConf
6	B	1	Total	Fe	0	0
			1	1		

- Molecule 7 is CYANIDE ION (CCD ID: CYN) (formula: CN).



Mol	Chain	Residues	Atoms			ZeroOcc	AltConf
7	B	1	Total	C	N	0	0
			2	1	1		
7	B	1	Total	C	N	0	0
			2	1	1		

- Molecule 8 is decyl 4-O-alpha-D-glucopyranosyl-1-thio-beta-D-glucopyranoside (CCD ID: 10M) (formula: C₂₂H₄₂O₁₀S).



Mol	Chain	Residues	Atoms				ZeroOcc	AltConf
8	B	1	Total	C	O	S	0	0
			33	22	10	1		

Continued on next page...

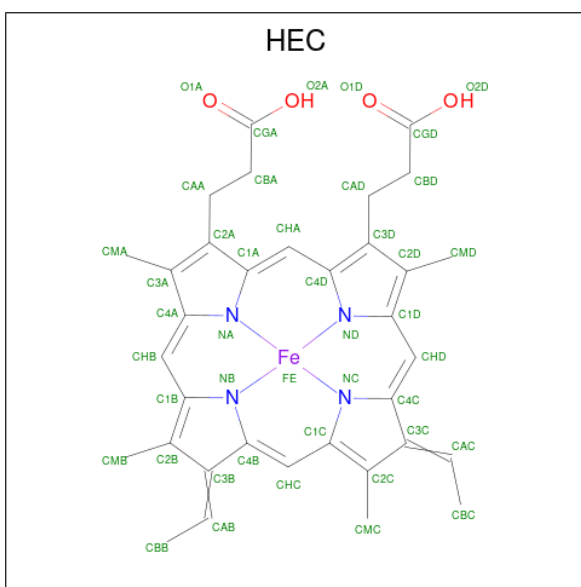
Continued from previous page...

Mol	Chain	Residues	Atoms				ZeroOcc	AltConf
8	B	1	Total	C	O	S	0	0
			33	22	10	1		

- Molecule 9 is CALCIUM ION (CCD ID: CA) (formula: Ca).

Mol	Chain	Residues	Atoms		ZeroOcc	AltConf
9	B	1	Total	Ca	0	0
			1	1		

- Molecule 10 is HEME C (CCD ID: HEC) (formula: C₃₄H₃₄FeN₄O₄).



Mol	Chain	Residues	Atoms					ZeroOcc	AltConf
10	C	1	Total	C	Fe	N	O	0	0
			43	34	1	4	4		

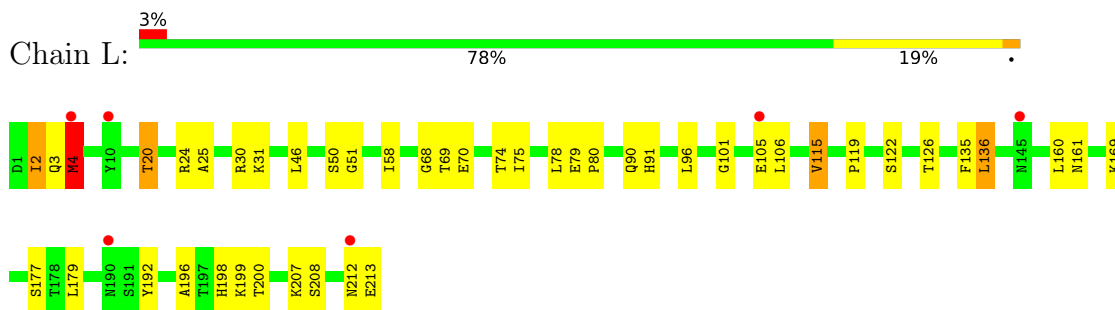
- Molecule 11 is water.

Mol	Chain	Residues	Atoms		ZeroOcc	AltConf
11	L	80	Total	O	0	0
			80	80		
11	H	77	Total	O	0	0
			77	77		
11	B	47	Total	O	0	0
			47	47		
11	C	38	Total	O	0	0
			38	38		

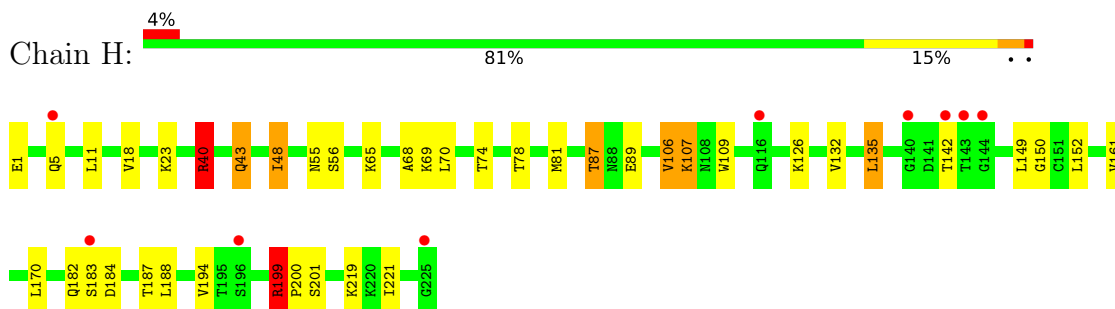
3 Residue-property plots [i](#)

These plots are drawn for all protein, RNA, DNA and oligosaccharide chains in the entry. The first graphic for a chain summarises the proportions of the various outlier classes displayed in the second graphic. The second graphic shows the sequence view annotated by issues in geometry and electron density. Residues are color-coded according to the number of geometric quality criteria for which they contain at least one outlier: green = 0, yellow = 1, orange = 2 and red = 3 or more. A red dot above a residue indicates a poor fit to the electron density ($RSRZ > 2$). Stretches of 2 or more consecutive residues without any outlier are shown as a green connector. Residues present in the sample, but not in the model, are shown in grey.

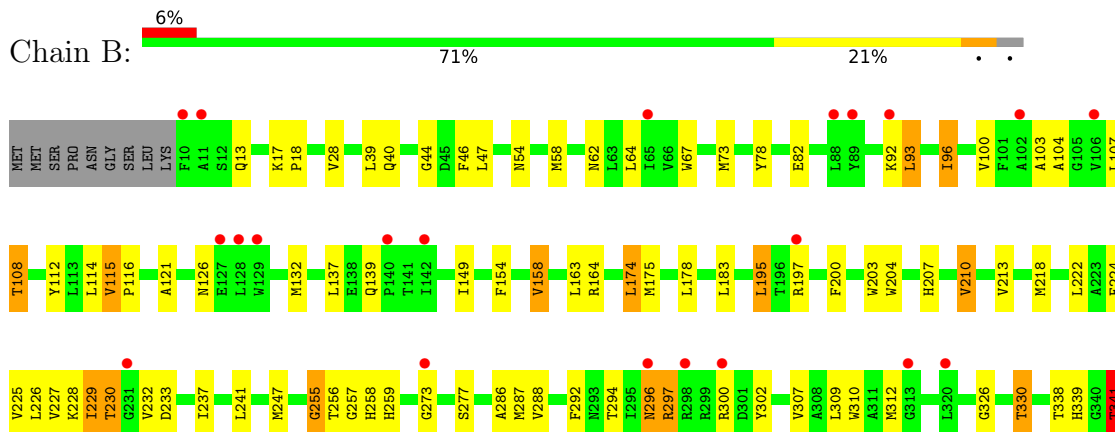
- Molecule 1: antibody fab fragment light chain

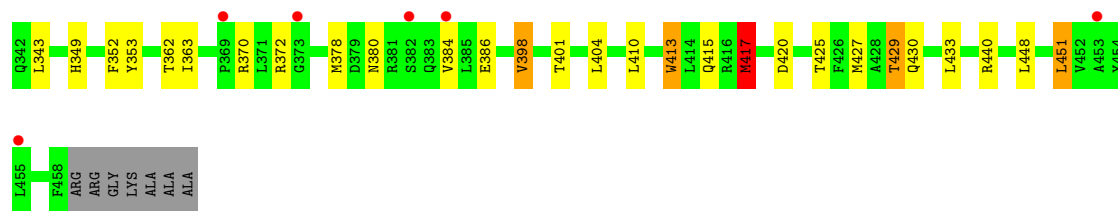


- Molecule 2: antibody fab fragment heavy chain

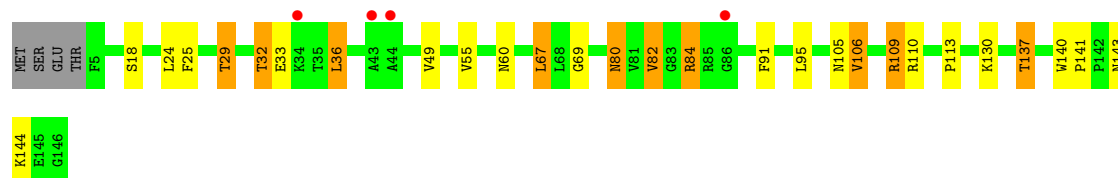
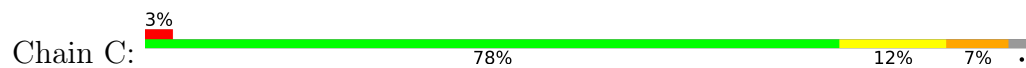


- Molecule 3: Nitric oxide reductase subunit B





● Molecule 4: Nitric oxide reductase subunit C



4 Data and refinement statistics

Property	Value	Source
Space group	P 21 21 21	Depositor
Cell constants a, b, c, α , β , γ	90.69Å 107.38Å 195.29Å 90.00° 90.00° 90.00°	Depositor
Resolution (Å)	35.16 – 2.49 35.16 – 2.49	Depositor EDS
% Data completeness (in resolution range)	98.4 (35.16-2.49) 98.4 (35.16-2.49)	Depositor EDS
R_{merge}	0.08	Depositor
R_{sym}	0.08	Depositor
$\langle I/\sigma(I) \rangle$ ¹	4.24 (at 2.51Å)	Xtrriage
Refinement program	REFMAC 5.7.0029	Depositor
R, R_{free}	0.189 , 0.227 (Not available) , 0.227	Depositor DCC
R_{free} test set	3358 reflections (5.00%)	wwPDB-VP
Wilson B-factor (Å ²)	53.2	Xtrriage
Anisotropy	0.278	Xtrriage
Bulk solvent k_{sol} (e/Å ³), B_{sol} (Å ²)	0.35 , 50.5	EDS
L-test for twinning ²	$\langle L \rangle = 0.51$, $\langle L^2 \rangle = 0.34$	Xtrriage
Estimated twinning fraction	No twinning to report.	Xtrriage
F_o, F_c correlation	0.95	EDS
Total number of atoms	8503	wwPDB-VP
Average B, all atoms (Å ²)	61.0	wwPDB-VP

Xtrriage's analysis on translational NCS is as follows: *The largest off-origin peak in the Patterson function is 3.46% of the height of the origin peak. No significant pseudotranslation is detected.*

¹Intensities estimated from amplitudes.

²Theoretical values of $\langle |L| \rangle$, $\langle L^2 \rangle$ for acentric reflections are 0.5, 0.333 respectively for untwinned datasets, and 0.375, 0.2 for perfectly twinned datasets.

5 Model quality [i](#)

5.1 Standard geometry [i](#)

Bond lengths and bond angles in the following residue types are not validated in this section: HEC, FE, HEM, CYN, 10M, CA

The Z score for a bond length (or angle) is the number of standard deviations the observed value is removed from the expected value. A bond length (or angle) with $|Z| > 5$ is considered an outlier worth inspection. RMSZ is the root-mean-square of all Z scores of the bond lengths (or angles).

Mol	Chain	Bond lengths		Bond angles	
		RMSZ	# $ Z > 5$	RMSZ	# $ Z > 5$
1	L	1.09	5/1709 (0.3%)	1.09	3/2317 (0.1%)
2	H	1.09	1/1735 (0.1%)	1.09	3/2367 (0.1%)
3	B	0.86	0/3693	1.02	7/5039 (0.1%)
4	C	0.88	1/1153 (0.1%)	1.09	6/1559 (0.4%)
All	All	0.97	7/8290 (0.1%)	1.06	19/11282 (0.2%)

The worst 5 of 7 bond length outliers are listed below:

Mol	Chain	Res	Type	Atoms	Z	Observed(Å)	Ideal(Å)
1	L	58	ILE	C-O	-6.18	1.16	1.24
1	L	119	PRO	C-O	-5.73	1.18	1.24
1	L	115	VAL	C-O	-5.65	1.18	1.24
1	L	4	MET	CA-C	-5.64	1.45	1.52
2	H	132	VAL	N-CA	-5.54	1.39	1.46

The worst 5 of 19 bond angle outliers are listed below:

Mol	Chain	Res	Type	Atoms	Z	Observed(°)	Ideal(°)
2	H	199	ARG	N-CA-C	11.27	118.28	108.13
4	C	105	ASN	CA-C-N	-7.58	117.14	122.59
4	C	105	ASN	C-N-CA	-7.58	117.14	122.59
4	C	106	VAL	CB-CA-C	6.40	117.56	110.71
3	B	341	THR	N-CA-CB	-6.38	101.29	111.62

There are no chirality outliers.

There are no planarity outliers.

5.2 Too-close contacts [i](#)

In the following table, the Non-H and H(model) columns list the number of non-hydrogen atoms and hydrogen atoms in the chain respectively. The H(added) column lists the number of hydrogen atoms added and optimized by MolProbity. The Clashes column lists the number of clashes within the asymmetric unit, whereas Symm-Clashes lists symmetry-related clashes.

Mol	Chain	Non-H	H(model)	H(added)	Clashes	Symm-Clashes
1	L	1669	0	1606	25	0
2	H	1692	0	1647	24	0
3	B	3576	0	3619	70	0
4	C	1123	0	1092	22	0
5	B	86	0	60	8	0
6	B	1	0	0	0	0
7	B	4	0	0	1	0
8	B	66	0	84	1	0
9	B	1	0	0	0	0
10	C	43	0	30	5	0
11	B	47	0	0	0	0
11	C	38	0	0	0	0
11	H	77	0	0	3	0
11	L	80	0	0	1	0
All	All	8503	0	8138	134	0

The all-atom clashscore is defined as the number of clashes found per 1000 atoms (including hydrogen atoms). The all-atom clashscore for this structure is 8.

The worst 5 of 134 close contacts within the same asymmetric unit are listed below, sorted by their clash magnitude.

Atom-1	Atom-2	Interatomic distance (Å)	Clash overlap (Å)
3:B:121:ALA:HA	3:B:132:MET:HE1	1.28	1.12
2:H:48:ILE:HG21	2:H:81:MET:HE1	1.51	0.91
2:H:48:ILE:HG21	2:H:81:MET:CE	2.09	0.82
3:B:427:MET:HE3	10:C:201:HEC:HAD1	1.64	0.78
4:C:25:PHE:O	4:C:29:THR:HG23	1.85	0.77

There are no symmetry-related clashes.

5.3 Torsion angles [i](#)

5.3.1 Protein backbone [i](#)

In the following table, the Percentiles column shows the percent Ramachandran outliers of the chain as a percentile score with respect to all X-ray entries followed by that with respect to entries of similar resolution.

The Analysed column shows the number of residues for which the backbone conformation was analysed, and the total number of residues.

Mol	Chain	Analysed	Favoured	Allowed	Outliers	Percentiles	
1	L	211/213 (99%)	202 (96%)	8 (4%)	1 (0%)	24	43
2	H	223/225 (99%)	213 (96%)	9 (4%)	1 (0%)	30	49
3	B	447/465 (96%)	428 (96%)	18 (4%)	1 (0%)	43	63
4	C	140/146 (96%)	135 (96%)	5 (4%)	0	100	100
All	All	1021/1049 (97%)	978 (96%)	40 (4%)	3 (0%)	36	55

All (3) Ramachandran outliers are listed below:

Mol	Chain	Res	Type
1	L	68	GLY
3	B	255	GLY
2	H	106	VAL

5.3.2 Protein sidechains [i](#)

In the following table, the Percentiles column shows the percent sidechain outliers of the chain as a percentile score with respect to all X-ray entries followed by that with respect to entries of similar resolution.

The Analysed column shows the number of residues for which the sidechain conformation was analysed, and the total number of residues.

Mol	Chain	Analysed	Rotameric	Outliers	Percentiles	
1	L	189/189 (100%)	171 (90%)	18 (10%)	8	17
2	H	192/192 (100%)	168 (88%)	24 (12%)	4	9
3	B	360/371 (97%)	314 (87%)	46 (13%)	4	9
4	C	116/120 (97%)	102 (88%)	14 (12%)	5	10
All	All	857/872 (98%)	755 (88%)	102 (12%)	5	11

5 of 102 residues with a non-rotameric sidechain are listed below:

Mol	Chain	Res	Type
3	B	183	LEU
3	B	330	THR
4	C	106	VAL
3	B	210	VAL
3	B	241	LEU

Sometimes sidechains can be flipped to improve hydrogen bonding and reduce clashes. 5 of 22 such sidechains are listed below:

Mol	Chain	Res	Type
3	B	296	ASN
3	B	430	GLN
3	B	411	GLN
4	C	60	ASN
1	L	212	ASN

5.3.3 RNA [i](#)

There are no RNA molecules in this entry.

5.4 Non-standard residues in protein, DNA, RNA chains [i](#)

There are no non-standard protein/DNA/RNA residues in this entry.

5.5 Carbohydrates [i](#)

There are no oligosaccharides in this entry.

5.6 Ligand geometry [i](#)

Of 9 ligands modelled in this entry, 2 are monoatomic - leaving 7 for Mogul analysis.

In the following table, the Counts columns list the number of bonds (or angles) for which Mogul statistics could be retrieved, the number of bonds (or angles) that are observed in the model and the number of bonds (or angles) that are defined in the Chemical Component Dictionary. The Link column lists molecule types, if any, to which the group is linked. The Z score for a bond length (or angle) is the number of standard deviations the observed value is removed from the expected value. A bond length (or angle) with $|Z| > 2$ is considered an outlier worth inspection. RMSZ is the root-mean-square of all Z scores of the bond lengths (or angles).

Mol	Type	Chain	Res	Link	Bond lengths			Bond angles		
					Counts	RMSZ	# Z > 2	Counts	RMSZ	# Z > 2
5	HEM	B	802	9,7,3	50,50,50	1.70	8 (16%)	67,82,82	2.25	24 (35%)
5	HEM	B	801	9,3	50,50,50	1.68	10 (20%)	67,82,82	2.21	20 (29%)
7	CYN	B	804	5	1,1,1	0.58	0	-		
7	CYN	B	805	6	1,1,1	0.59	0	-		
8	10M	B	807	-	34,34,34	1.14	3 (8%)	44,45,45	1.28	6 (13%)
10	HEC	C	201	4	46,50,50	1.87	5 (10%)	58,82,82	1.84	7 (12%)
8	10M	B	806	-	34,34,34	0.93	2 (5%)	44,45,45	1.18	4 (9%)

In the following table, the Chirals column lists the number of chiral outliers, the number of chiral centers analysed, the number of these observed in the model and the number defined in the Chemical Component Dictionary. Similar counts are reported in the Torsion and Rings columns. '-' means no outliers of that kind were identified.

Mol	Type	Chain	Res	Link	Chirals	Torsions	Rings
5	HEM	B	802	9,7,3	-	5/14/54/54	-
5	HEM	B	801	9,3	-	5/14/54/54	-
8	10M	B	807	-	-	3/19/59/59	0/2/2/2
10	HEC	C	201	4	-	6/14/54/54	-
8	10M	B	806	-	-	9/19/59/59	0/2/2/2

The worst 5 of 28 bond length outliers are listed below:

Mol	Chain	Res	Type	Atoms	Z	Observed(Å)	Ideal(Å)
5	B	802	HEM	C3D-C2D	6.58	1.51	1.36
5	B	801	HEM	C3D-C2D	6.26	1.50	1.36
10	C	201	HEC	CAC-C3C	6.24	1.55	1.35
10	C	201	HEC	CAB-C3B	5.90	1.54	1.35
10	C	201	HEC	C3D-C2D	5.05	1.52	1.38

The worst 5 of 61 bond angle outliers are listed below:

Mol	Chain	Res	Type	Atoms	Z	Observed(°)	Ideal(°)
10	C	201	HEC	CBB-CAB-C3B	-10.32	106.81	127.43
5	B	801	HEM	C4C-C3C-C2C	8.40	114.09	106.81
5	B	802	HEM	C1D-C2D-C3D	-6.56	100.08	106.98
5	B	802	HEM	CMB-C2B-C1B	-5.44	116.53	125.03
5	B	801	HEM	CBC-CAC-C3C	-5.42	100.42	127.53

There are no chirality outliers.

5 of 28 torsion outliers are listed below:

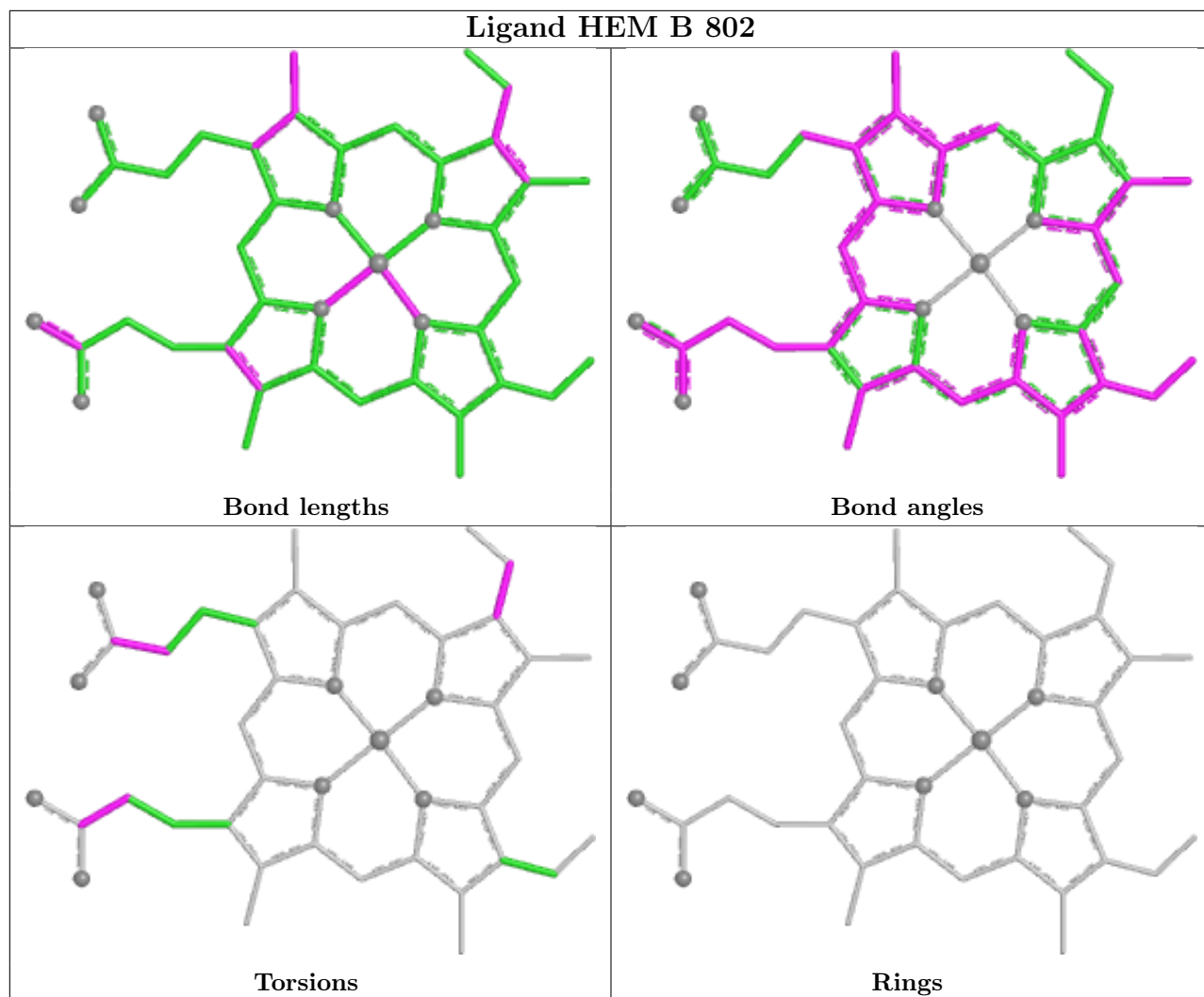
Mol	Chain	Res	Type	Atoms
5	B	801	HEM	C2C-C3C-CAC-CBC
10	C	201	HEC	C2B-C3B-CAB-CBB
10	C	201	HEC	C4B-C3B-CAB-CBB
10	C	201	HEC	C2C-C3C-CAC-CBC
10	C	201	HEC	C4C-C3C-CAC-CBC

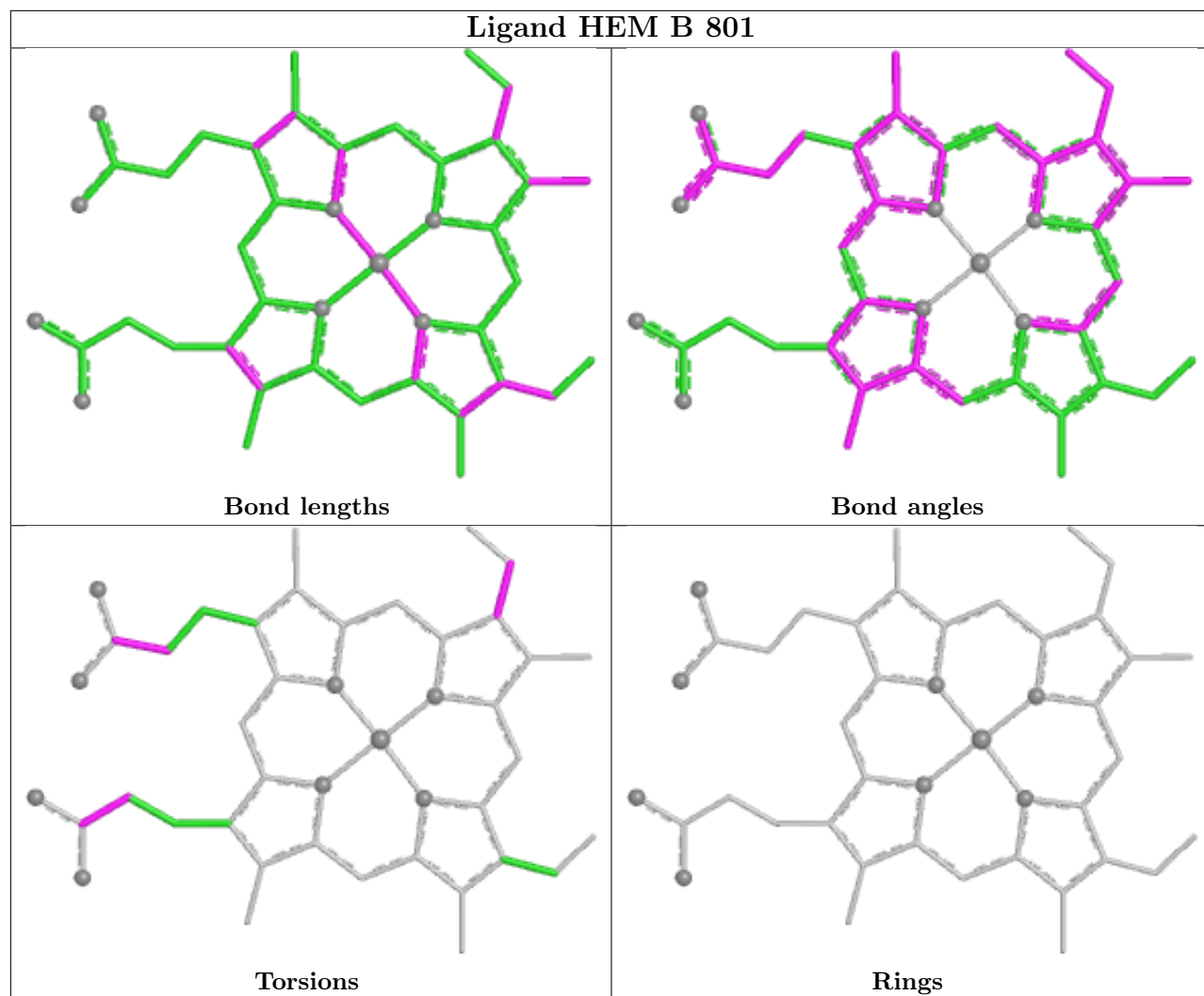
There are no ring outliers.

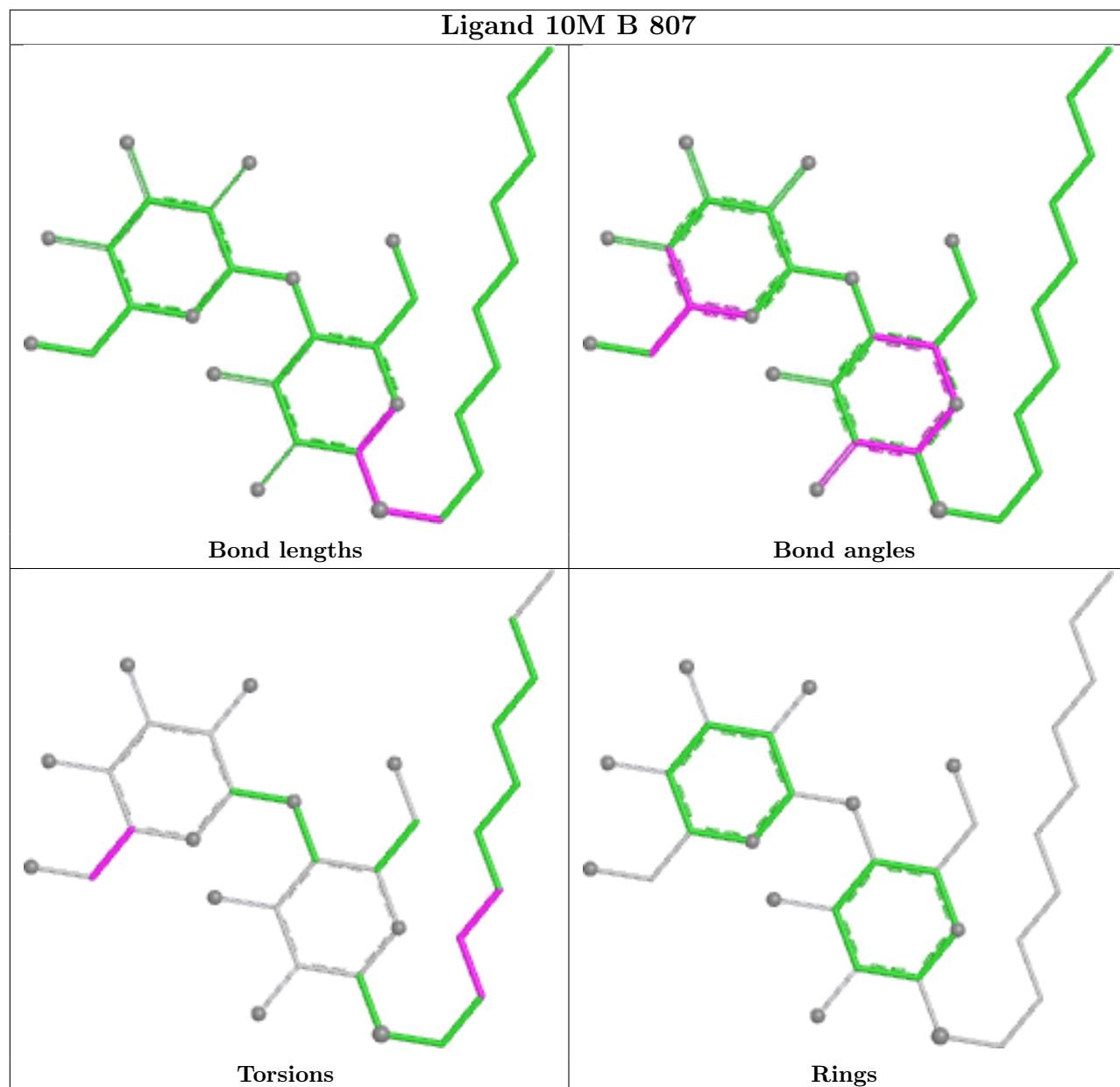
6 monomers are involved in 14 short contacts:

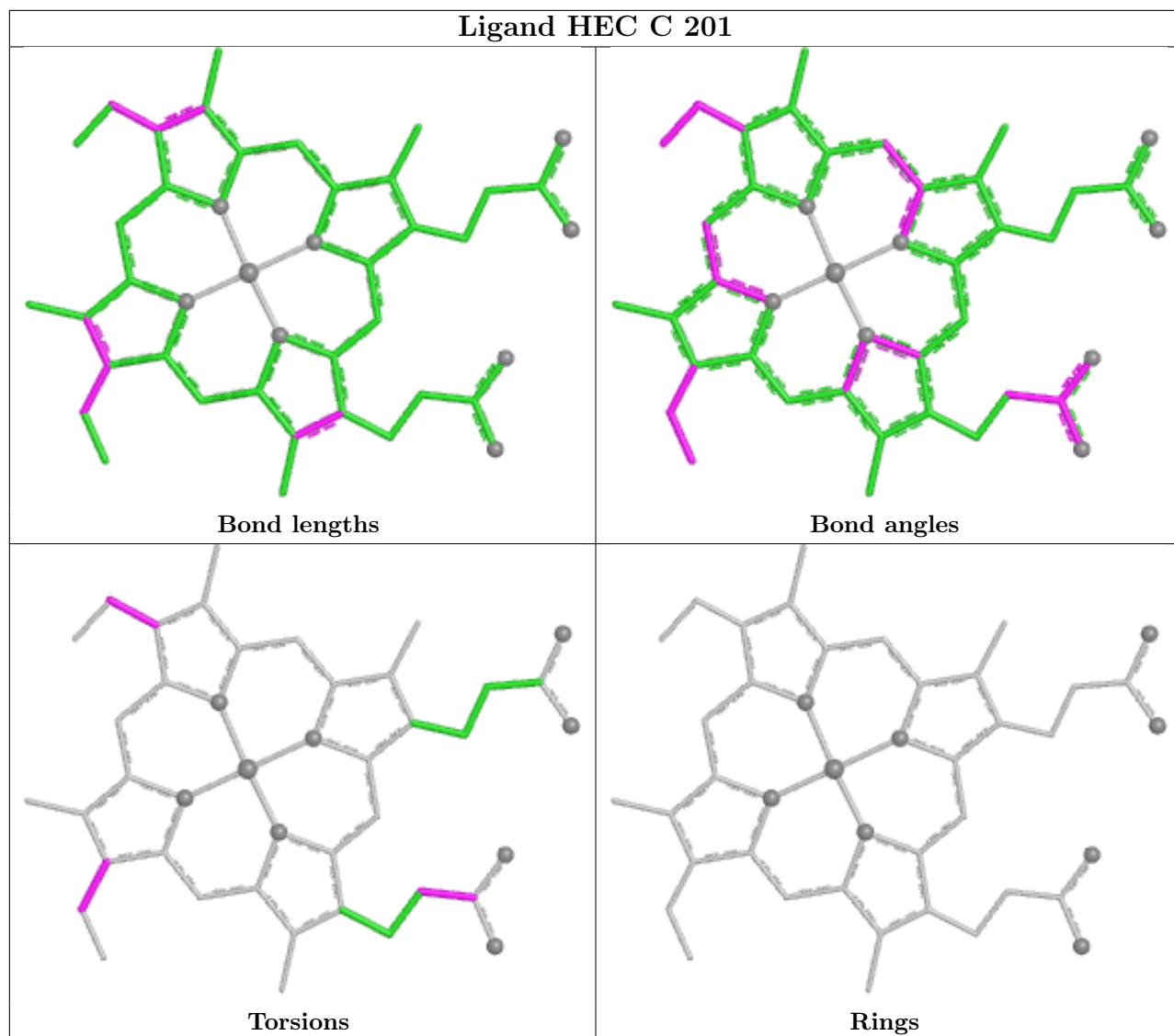
Mol	Chain	Res	Type	Clashes	Symm-Clashes
5	B	802	HEM	3	0
5	B	801	HEM	5	0
7	B	804	CYN	1	0
8	B	807	10M	1	0
10	C	201	HEC	5	0
8	B	806	10M	1	0

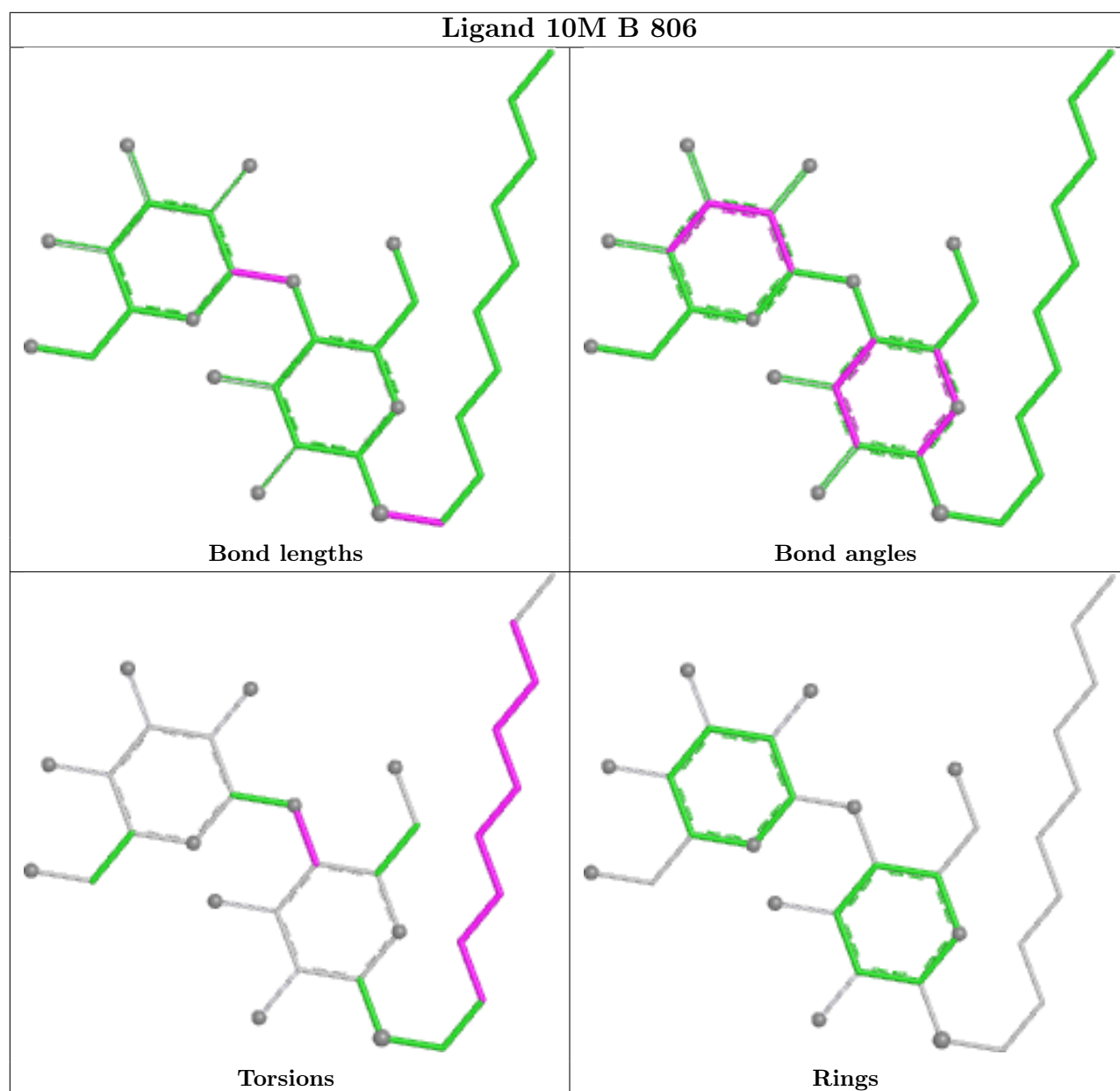
The following is a two-dimensional graphical depiction of Mogul quality analysis of bond lengths, bond angles, torsion angles, and ring geometry for all instances of the Ligand of Interest. In addition, ligands with molecular weight > 250 and outliers as shown on the validation Tables will also be included. For torsion angles, if less than 5% of the Mogul distribution of torsion angles is within 10 degrees of the torsion angle in question, then that torsion angle is considered an outlier. Any bond that is central to one or more torsion angles identified as an outlier by Mogul will be highlighted in the graph. For rings, the root-mean-square deviation (RMSD) between the ring in question and similar rings identified by Mogul is calculated over all ring torsion angles. If the average RMSD is greater than 60 degrees and the minimal RMSD between the ring in question and any Mogul-identified rings is also greater than 60 degrees, then that ring is considered an outlier. The outliers are highlighted in purple. The color gray indicates Mogul did not find sufficient equivalents in the CSD to analyse the geometry.











5.7 Other polymers [\(i\)](#)

There are no such residues in this entry.

5.8 Polymer linkage issues [\(i\)](#)

There are no chain breaks in this entry.

6 Fit of model and data [i](#)

6.1 Protein, DNA and RNA chains [i](#)

In the following table, the column labelled ‘#RSRZ > 2’ contains the number (and percentage) of RSRZ outliers, followed by percent RSRZ outliers for the chain as percentile scores relative to all X-ray entries and entries of similar resolution. The OWAB column contains the minimum, median, 95th percentile and maximum values of the occupancy-weighted average B-factor per residue. The column labelled ‘Q < 0.9’ lists the number of (and percentage) of residues with an average occupancy less than 0.9.

Mol	Chain	Analysed	<RSRZ>	#RSRZ>2	OWAB(Å ²)	Q<0.9
1	L	213/213 (100%)	-0.08	6 (2%) 55 50	37, 49, 70, 113	0
2	H	225/225 (100%)	0.05	9 (4%) 42 38	37, 49, 83, 163	0
3	B	449/465 (96%)	0.53	27 (6%) 27 24	42, 65, 100, 137	0
4	C	142/146 (97%)	0.28	4 (2%) 55 50	41, 64, 91, 106	0
All	All	1029/1049 (98%)	0.26	46 (4%) 38 33	37, 58, 95, 163	0

The worst 5 of 46 RSRZ outliers are listed below:

Mol	Chain	Res	Type	RSRZ
1	L	145	ASN	4.1
2	H	142	THR	3.7
4	C	86	GLY	3.6
1	L	212	ASN	3.5
3	B	127	GLU	3.4

6.2 Non-standard residues in protein, DNA, RNA chains [i](#)

There are no non-standard protein/DNA/RNA residues in this entry.

6.3 Carbohydrates [i](#)

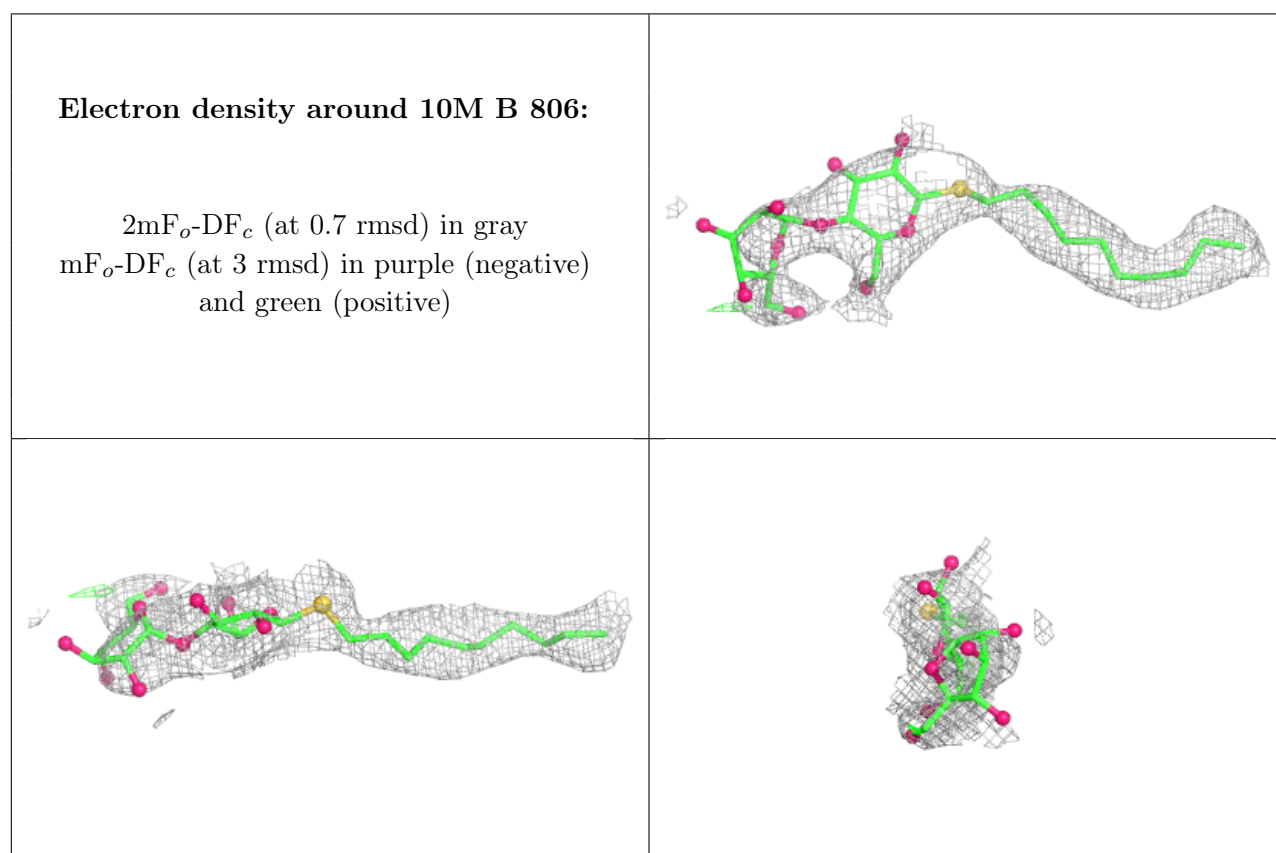
There are no oligosaccharides in this entry.

6.4 Ligands [i](#)

In the following table, the Atoms column lists the number of modelled atoms in the group and the number defined in the chemical component dictionary. The B-factors column lists the minimum, median, 95th percentile and maximum values of B factors of atoms in the group. The column labelled ‘Q < 0.9’ lists the number of atoms with occupancy less than 0.9.

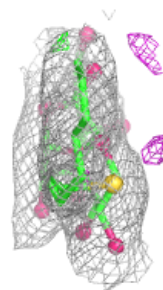
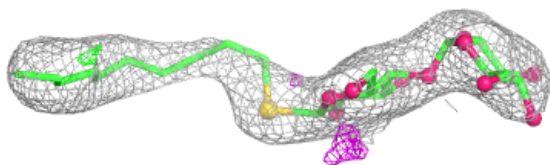
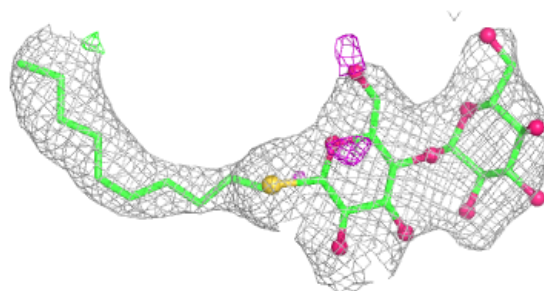
Mol	Type	Chain	Res	Atoms	RSCC	RSR	B-factors(\AA^2)	Q<0.9
8	10M	B	806	33/33	0.78	0.16	101,131,158,159	0
8	10M	B	807	33/33	0.91	0.13	76,86,108,117	0
7	CYN	B	804	2/2	0.97	0.09	47,47,47,49	0
5	HEM	B	802	43/43	0.98	0.07	40,45,46,48	0
5	HEM	B	801	43/43	0.98	0.09	41,48,57,64	0
10	HEC	C	201	43/43	0.98	0.08	35,42,49,53	0
7	CYN	B	805	2/2	0.99	0.04	39,39,39,42	0
9	CA	B	808	1/1	1.00	0.03	53,53,53,53	0
6	FE	B	803	1/1	1.00	0.01	47,47,47,47	0

The following is a graphical depiction of the model fit to experimental electron density of all instances of the Ligand of Interest. In addition, ligands with molecular weight > 250 and outliers as shown on the geometry validation Tables will also be included. Each fit is shown from different orientation to approximate a three-dimensional view.



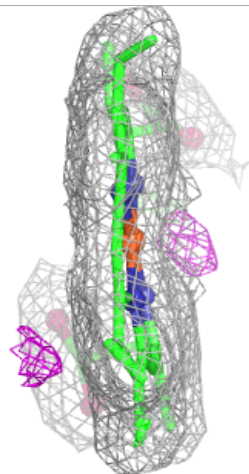
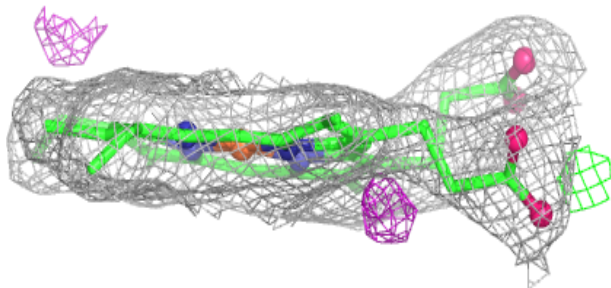
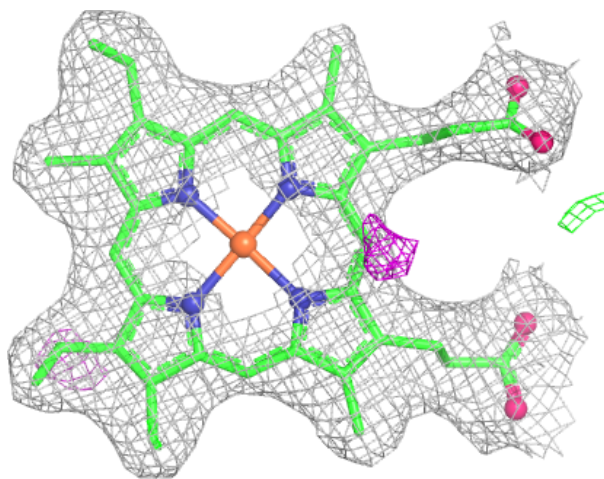
Electron density around 10M B 807:

$2mF_o-DF_c$ (at 0.7 rmsd) in gray
 mF_o-DF_c (at 3 rmsd) in purple (negative)
and green (positive)



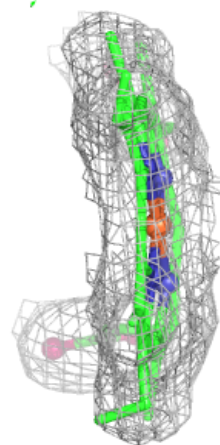
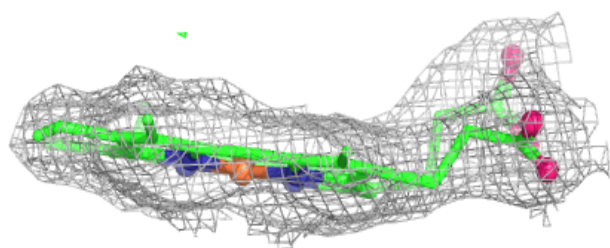
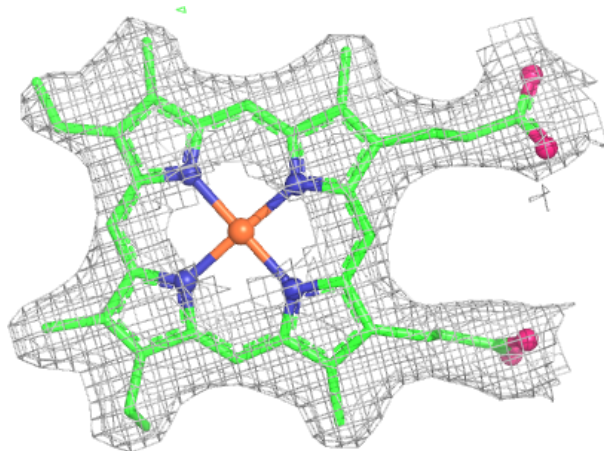
Electron density around HEM B 802:

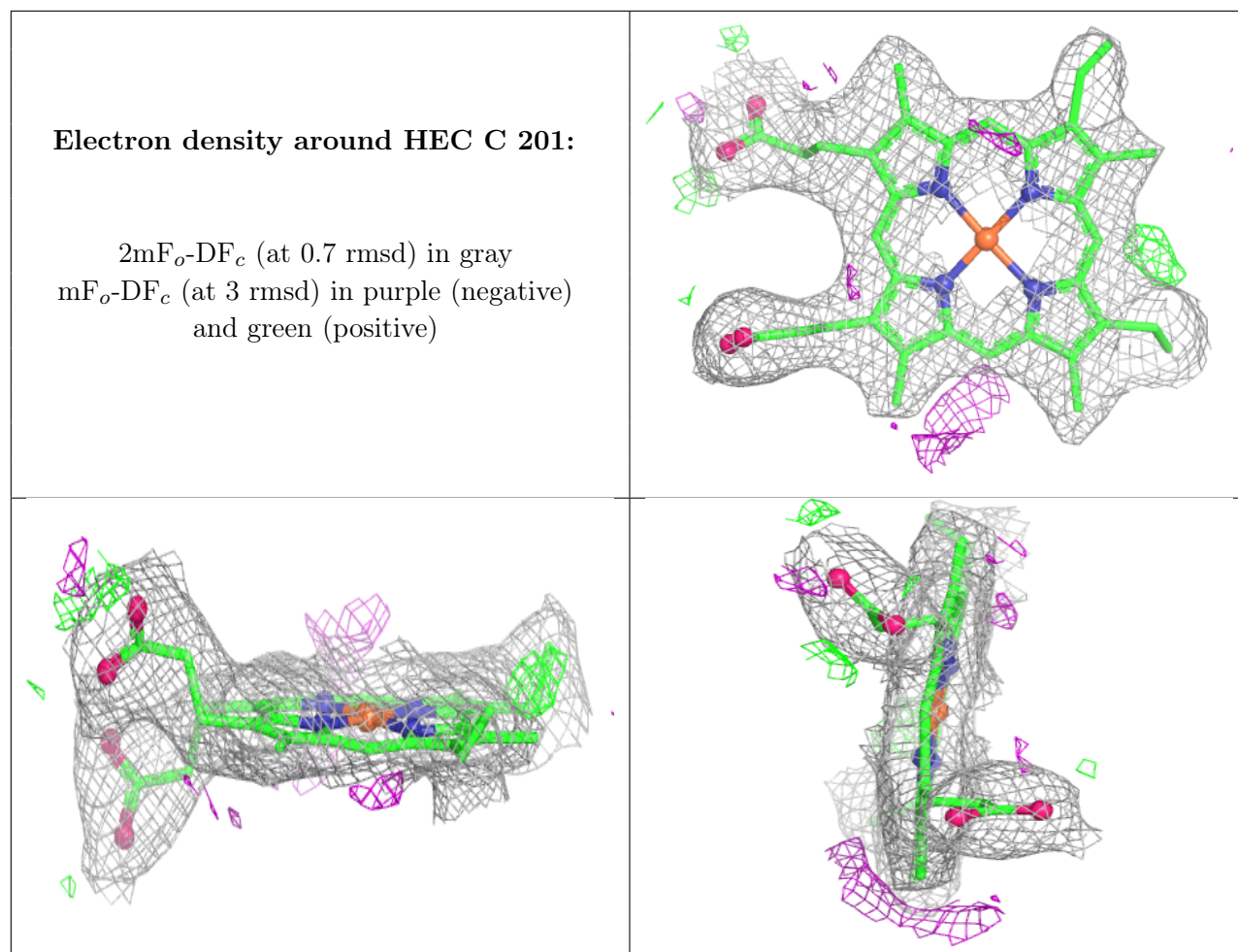
$2mF_o-DF_c$ (at 0.7 rmsd) in gray
 mF_o-DF_c (at 3 rmsd) in purple (negative)
and green (positive)



Electron density around HEM B 801:

$2mF_o-DF_c$ (at 0.7 rmsd) in gray
 mF_o-DF_c (at 3 rmsd) in purple (negative)
and green (positive)





6.5 Other polymers [i](#)

There are no such residues in this entry.