



# Full wwPDB X-ray Structure Validation Report ⓘ

Mar 6, 2026 – 11:22 AM UTC

PDB ID : 2WP5 / pdb\_00002wp5  
Title : Trypanosoma brucei trypanothione reductase in complex with 3,4- dihydro-quinazoline inhibitor (DDD00065414)  
Authors : Alpey, M.S.; Patterson, S.; Fairlamb, A.H.  
Deposited on : 2009-08-03  
Resolution : 2.80 Å(reported)

This is a Full wwPDB X-ray Structure Validation Report for a publicly released PDB entry.

We welcome your comments at [validation@mail.wwpdb.org](mailto:validation@mail.wwpdb.org)

A user guide is available at

<https://www.wwpdb.org/validation/2017/XrayValidationReportHelp>

with specific help available everywhere you see the ⓘ symbol.

The types of validation reports are described at

<http://www.wwpdb.org/validation/2017/FAQs#types>.

---

The following versions of software and data (see [references ⓘ](#)) were used in the production of this report:

MolProbity : 4-5-2 with Phenix2.0  
Mogul : 2022.3.0, CSD as543be (2022)  
Xtrriage (Phenix) : 2.0  
EDS : 3.0  
Buster-report : wwPDB partial adaption of 1.1.7 (2018)  
Percentile statistics : 20250101.v01 (using entries in the PDB archive January 1st 2025)  
CCP4 : 9.0.010 (Gargrove)  
Density-Fitness : 1.0.12  
Ideal geometry (proteins) : Engh & Huber (2001)  
Ideal geometry (DNA, RNA) : Parkinson et al. (1996)  
Validation Pipeline (wwPDB-VP) : 2.49

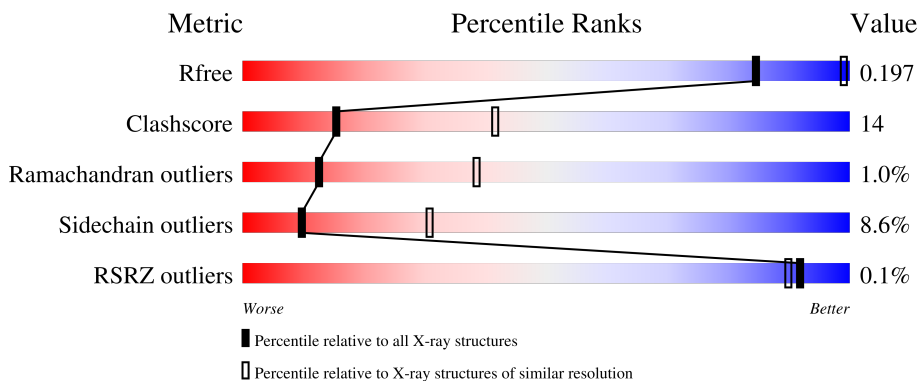
# 1 Overall quality at a glance i

The following experimental techniques were used to determine the structure:

*X-RAY DIFFRACTION*

The reported resolution of this entry is 2.80 Å.

Percentile scores (ranging between 0-100) for global validation metrics of the entry are shown in the following graphic. The table shows the number of entries on which the scores are based.



Metric	Whole archive (#Entries)	Similar resolution (#Entries, resolution range(Å))
$R_{free}$	180053	3866 (2.80-2.80)
Clashscore	190562	4276 (2.80-2.80)
Ramachandran outliers	187476	4196 (2.80-2.80)
Sidechain outliers	187428	4198 (2.80-2.80)
RSRZ outliers	180081	3869 (2.80-2.80)

The table below summarises the geometric issues observed across the polymeric chains and their fit to the electron density. The red, orange, yellow and green segments of the lower bar indicate the fraction of residues that contain outliers for  $\geq 3$ , 2, 1 and 0 types of geometric quality criteria respectively. A grey segment represents the fraction of residues that are not modelled. The numeric value for each fraction is indicated below the corresponding segment, with a dot representing fractions  $\leq 5\%$ . The upper red bar (where present) indicates the fraction of residues that have poor fit to the electron density. The numeric value is given above the bar.

Mol	Chain	Length	Quality of chain
1	A	495	70% (green), 25% (yellow), 5% (orange), 0% (red), 0% (grey)
1	B	495	66% (green), 28% (yellow), 5% (orange), 0% (red), 1% (grey)
1	C	495	71% (green), 22% (yellow), 5% (orange), 0% (red), 0% (grey)
1	D	495	67% (green), 28% (yellow), 5% (orange), 0% (red), 0% (grey)

The following table lists non-polymeric compounds, carbohydrate monomers and non-standard

residues in protein, DNA, RNA chains that are outliers for geometric or electron-density-fit criteria:

Mol	Type	Chain	Res	Chirality	Geometry	Clashes	Electron density
6	MRD	A	1491	-	-	X	-
7	MPD	D	1491	-	-	X	-
7	MPD	D	1492	-	-	X	-

## 2 Entry composition [i](#)

There are 8 unique types of molecules in this entry. The entry contains 15423 atoms, of which 0 are hydrogens and 0 are deuteriums.

In the tables below, the ZeroOcc column contains the number of atoms modelled with zero occupancy, the AltConf column contains the number of residues with at least one atom in alternate conformation and the Trace column contains the number of residues modelled with at most 2 atoms.

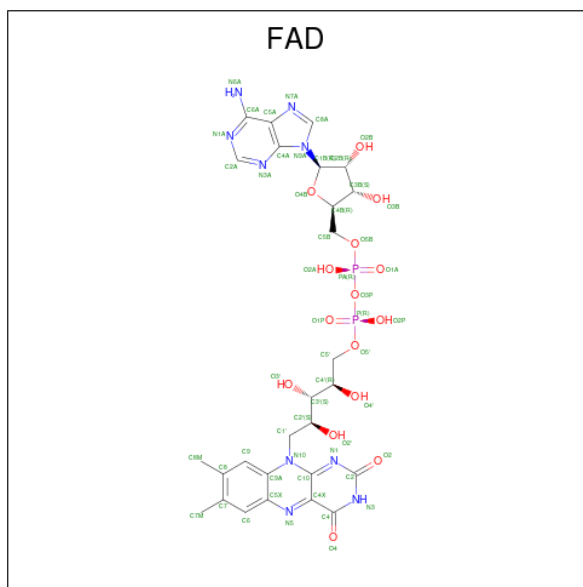
- Molecule 1 is a protein called TRYPANOTHIONE REDUCTASE.

Mol	Chain	Residues	Atoms					ZeroOcc	AltConf	Trace
			Total	C	N	O	S			
1	A	488	3735	2380	634	701	20	0	2	0
1	B	485	3715	2363	635	698	19	0	5	0
1	C	485	3700	2355	629	697	19	0	2	0
1	D	488	3716	2364	631	701	20	0	1	0

There are 12 discrepancies between the modelled and reference sequences:

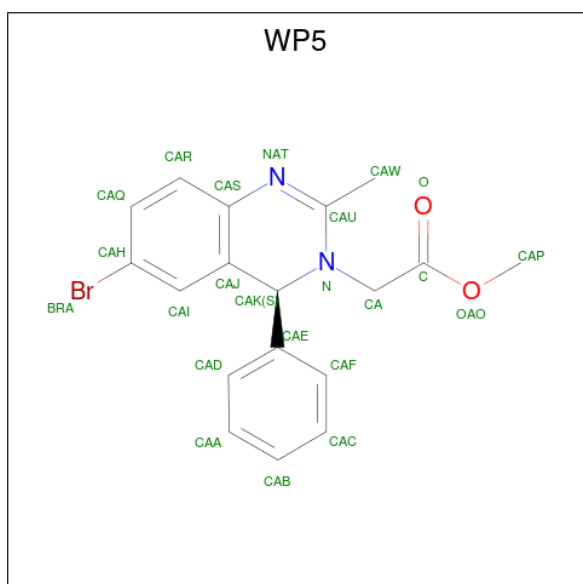
Chain	Residue	Modelled	Actual	Comment	Reference
A	-2	GLY	-	expression tag	UNP Q389T8
A	-1	SER	-	expression tag	UNP Q389T8
A	0	HIS	-	expression tag	UNP Q389T8
B	-2	GLY	-	expression tag	UNP Q389T8
B	-1	SER	-	expression tag	UNP Q389T8
B	0	HIS	-	expression tag	UNP Q389T8
C	-2	GLY	-	expression tag	UNP Q389T8
C	-1	SER	-	expression tag	UNP Q389T8
C	0	HIS	-	expression tag	UNP Q389T8
D	-2	GLY	-	expression tag	UNP Q389T8
D	-1	SER	-	expression tag	UNP Q389T8
D	0	HIS	-	expression tag	UNP Q389T8

- Molecule 2 is FLAVIN-ADENINE DINUCLEOTIDE (CCD ID: FAD) (formula:  $C_{27}H_{33}N_9O_{15}P_2$ ).



Mol	Chain	Residues	Atoms				ZeroOcc	AltConf		
			Total	C	N	O			P	
2	A	1	Total	53	27	9	15	2	0	0
2	B	1	Total	53	27	9	15	2	0	0
2	C	1	Total	53	27	9	15	2	0	0
2	D	1	Total	53	27	9	15	2	0	0

- Molecule 3 is METHYL [(4S)-6-BROMO-2-METHYL-4-PHENYLQUINAZOLIN-3(4H)-YL]ACETATE (CCD ID: WP5) (formula: C<sub>18</sub>H<sub>17</sub>BrN<sub>2</sub>O<sub>2</sub>).



Mol	Chain	Residues	Atoms					ZeroOcc	AltConf
			Total	Br	C	N	O		
3	A	1	23	1	18	2	2	0	0
3	B	1	23	1	18	2	2	0	0
3	C	1	23	1	18	2	2	0	0
3	D	1	23	1	18	2	2	0	0

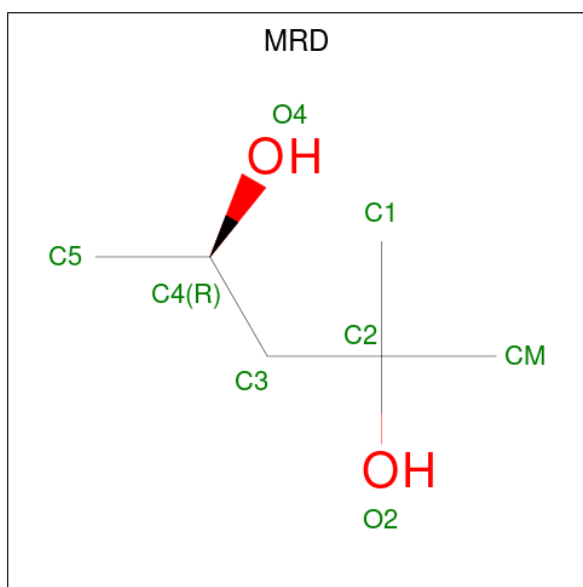
- Molecule 4 is CHLORIDE ION (CCD ID: CL) (formula: Cl).

Mol	Chain	Residues	Atoms		ZeroOcc	AltConf
			Total	Cl		
4	A	2	2	2	0	0
4	B	2	2	2	0	0
4	C	2	2	2	0	0
4	D	2	2	2	0	0

- Molecule 5 is SODIUM ION (CCD ID: NA) (formula: Na).

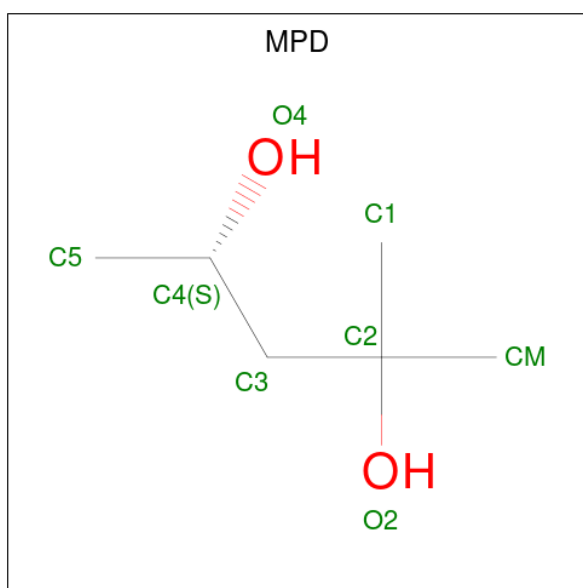
Mol	Chain	Residues	Atoms		ZeroOcc	AltConf
			Total	Na		
5	A	1	1	1	0	0
5	B	2	2	2	0	0
5	C	1	1	1	0	0
5	D	2	2	2	0	0

- Molecule 6 is (4R)-2-METHYLPENTANE-2,4-DIOL (CCD ID: MRD) (formula: C<sub>6</sub>H<sub>14</sub>O<sub>2</sub>).



Mol	Chain	Residues	Atoms			ZeroOcc	AltConf
6	A	1	Total	C	O	0	0
			8	6	2		
6	A	1	Total	C	O	0	0
			8	6	2		

- Molecule 7 is (4S)-2-METHYL-2,4-PENTANEDIOL (CCD ID: MPD) (formula: C<sub>6</sub>H<sub>14</sub>O<sub>2</sub>).



Mol	Chain	Residues	Atoms			ZeroOcc	AltConf
7	D	1	Total	C	O	0	0
			8	6	2		
7	D	1	Total	C	O	0	0
			8	6	2		

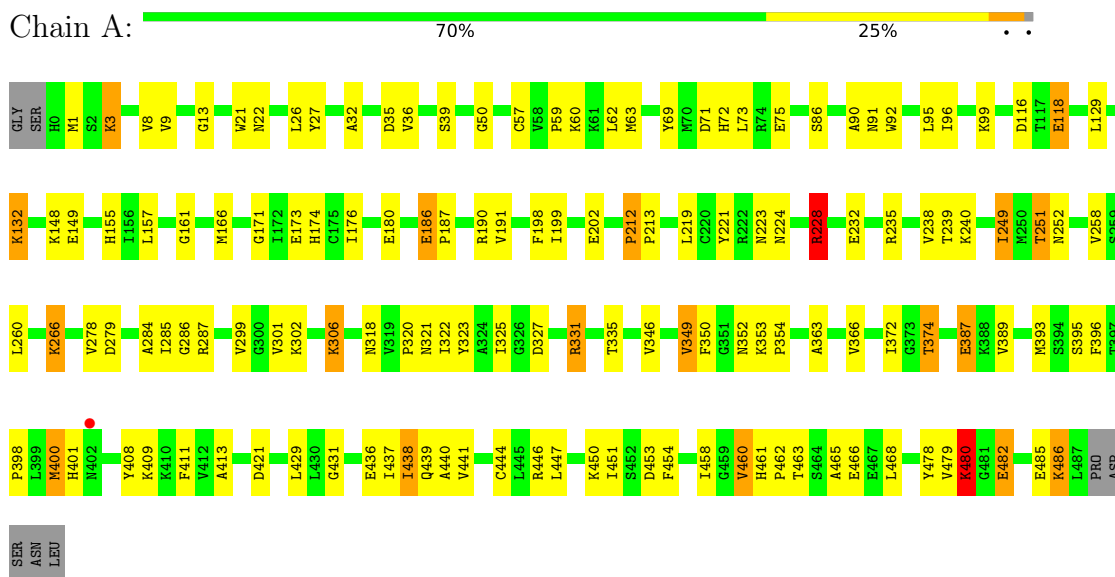
- Molecule 8 is water.

<b>Mol</b>	<b>Chain</b>	<b>Residues</b>	<b>Atoms</b>		<b>ZeroOcc</b>	<b>AltConf</b>
8	A	71	Total 71	O 71	0	0
8	B	44	Total 44	O 44	0	0
8	C	36	Total 36	O 36	0	0
8	D	56	Total 56	O 56	0	0

### 3 Residue-property plots

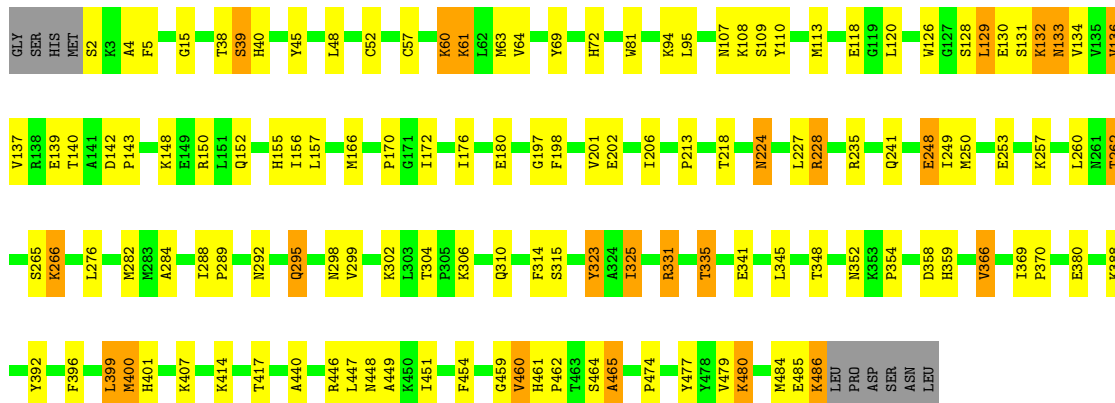
These plots are drawn for all protein, RNA, DNA and oligosaccharide chains in the entry. The first graphic for a chain summarises the proportions of the various outlier classes displayed in the second graphic. The second graphic shows the sequence view annotated by issues in geometry and electron density. Residues are color-coded according to the number of geometric quality criteria for which they contain at least one outlier: green = 0, yellow = 1, orange = 2 and red = 3 or more. A red dot above a residue indicates a poor fit to the electron density ( $RSRZ > 2$ ). Stretches of 2 or more consecutive residues without any outlier are shown as a green connector. Residues present in the sample, but not in the model, are shown in grey.

#### • Molecule 1: TRYPTANOTHIONE REDUCTASE



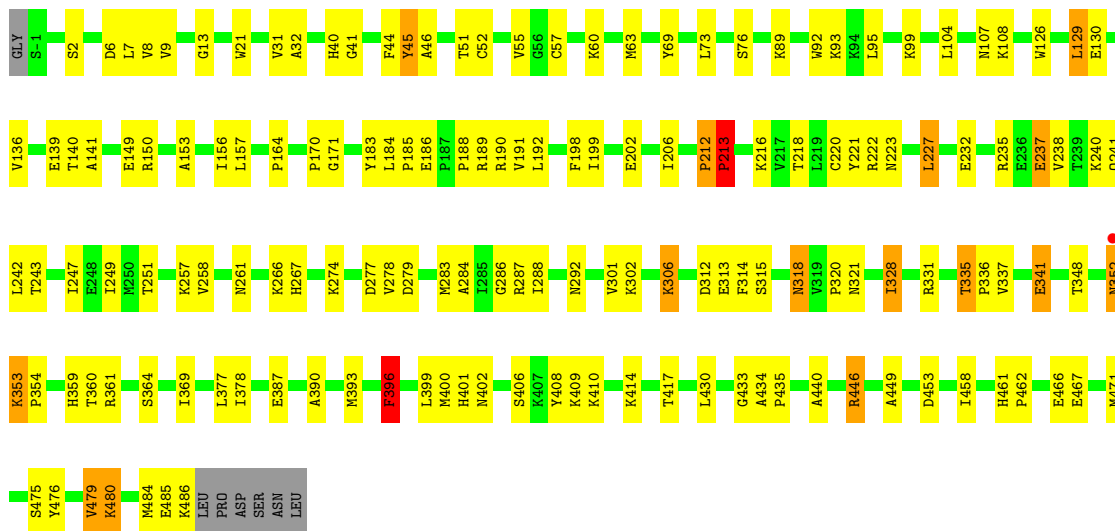
- Molecule 1: TRYPTANOTHIONE REDUCTASE

Chain C:  71% 22% 5%



- Molecule 1: TRYPTANOTHIONE REDUCTASE

Chain D:  67% 28%



## 4 Data and refinement statistics

Property	Value	Source
Space group	P 1 21 1	Depositor
Cell constants a, b, c, $\alpha$ , $\beta$ , $\gamma$	100.94Å 63.30Å 169.41Å 90.00° 98.09° 90.00°	Depositor
Resolution (Å)	46.71 – 2.80 46.71 – 2.80	Depositor EDS
% Data completeness (in resolution range)	100.0 (46.71-2.80) 83.4 (46.71-2.80)	Depositor EDS
$R_{merge}$	0.13	Depositor
$R_{sym}$	(Not available)	Depositor
$\langle I/\sigma(I) \rangle$ <sup>1</sup>	4.08 (at 2.81Å)	Xtrriage
Refinement program	REFMAC 5.5.0088	Depositor
R, $R_{free}$	0.164 , 0.219 (Not available) , 0.197	Depositor DCC
$R_{free}$ test set	2203 reflections (5.00%)	wwPDB-VP
Wilson B-factor (Å <sup>2</sup> )	22.4	Xtrriage
Anisotropy	0.389	Xtrriage
Bulk solvent $k_{sol}$ (e/Å <sup>3</sup> ), $B_{sol}$ (Å <sup>2</sup> )	0.31 , 22.4	EDS
L-test for twinning <sup>2</sup>	$\langle  L  \rangle = 0.48$ , $\langle L^2 \rangle = 0.31$	Xtrriage
Estimated twinning fraction	No twinning to report.	Xtrriage
$F_o, F_c$ correlation	0.94	EDS
Total number of atoms	15423	wwPDB-VP
Average B, all atoms (Å <sup>2</sup> )	16.0	wwPDB-VP

Xtrriage's analysis on translational NCS is as follows: *The largest off-origin peak in the Patterson function is 6.19% of the height of the origin peak. No significant pseudotranslation is detected.*

<sup>1</sup>Intensities estimated from amplitudes.

<sup>2</sup>Theoretical values of  $\langle |L| \rangle$ ,  $\langle L^2 \rangle$  for acentric reflections are 0.5, 0.333 respectively for untwinned datasets, and 0.375, 0.2 for perfectly twinned datasets.

## 5 Model quality [i](#)

### 5.1 Standard geometry [i](#)

Bond lengths and bond angles in the following residue types are not validated in this section: MRD, MPD, FAD, WP5, CL, NA

The Z score for a bond length (or angle) is the number of standard deviations the observed value is removed from the expected value. A bond length (or angle) with  $|Z| > 5$  is considered an outlier worth inspection. RMSZ is the root-mean-square of all Z scores of the bond lengths (or angles).

Mol	Chain	Bond lengths		Bond angles	
		RMSZ	# $ Z  > 5$	RMSZ	# $ Z  > 5$
1	A	1.01	2/3824 (0.1%)	1.15	9/5186 (0.2%)
1	B	0.95	1/3807 (0.0%)	1.13	12/5161 (0.2%)
1	C	0.96	1/3784 (0.0%)	1.13	5/5132 (0.1%)
1	D	1.02	4/3798 (0.1%)	1.13	8/5151 (0.2%)
All	All	0.99	8/15213 (0.1%)	1.14	34/20630 (0.2%)

Chiral center outliers are detected by calculating the chiral volume of a chiral center and verifying if the center is modelled as a planar moiety or with the opposite hand. A planarity outlier is detected by checking planarity of atoms in a peptide group, atoms in a mainchain group or atoms of a sidechain that are expected to be planar.

Mol	Chain	#Chirality outliers	#Planarity outliers
1	B	0	1
1	D	0	2
All	All	0	3

All (8) bond length outliers are listed below:

Mol	Chain	Res	Type	Atoms	Z	Observed(Å)	Ideal(Å)
1	B	166	MET	CA-C	-5.99	1.47	1.52
1	A	363	ALA	CA-CB	-5.96	1.43	1.53
1	D	369	ILE	CA-CB	5.84	1.59	1.54
1	D	212	PRO	CA-C	5.55	1.57	1.52
1	C	262	THR	CA-CB	5.50	1.62	1.53
1	A	228	ARG	CD-NE	5.36	1.53	1.46
1	D	484	MET	CA-C	-5.14	1.47	1.53
1	D	141	ALA	CA-CB	-5.08	1.45	1.53

All (34) bond angle outliers are listed below:

Mol	Chain	Res	Type	Atoms	Z	Observed(°)	Ideal(°)
1	B	319	VAL	CA-C-N	8.42	130.36	119.84
1	B	319	VAL	C-N-CA	8.42	130.36	119.84
1	D	292	ASN	N-CA-C	8.36	121.33	111.71
1	B	212	PRO	CA-C-N	-8.33	109.81	119.05
1	B	212	PRO	C-N-CA	-8.33	109.81	119.05
1	A	186	GLU	N-CA-C	7.50	114.97	108.22
1	D	6	ASP	N-CA-C	-6.97	103.11	111.69
1	B	292	ASN	N-CA-C	6.94	118.85	111.28
1	D	139	GLU	N-CA-C	6.80	118.69	111.28
1	C	5	PHE	N-CA-C	6.78	119.37	109.07
1	D	232	GLU	N-CA-C	6.75	119.47	111.71
1	A	212	PRO	CA-C-N	6.10	127.46	119.84
1	A	212	PRO	C-N-CA	6.10	127.46	119.84
1	B	353	LYS	CA-C-N	5.99	126.30	119.83
1	B	353	LYS	C-N-CA	5.99	126.30	119.83
1	B	31	VAL	N-CA-C	5.95	116.65	107.78
1	A	374	THR	N-CA-C	5.86	118.78	108.75
1	B	352	ASN	N-CA-C	-5.75	98.55	110.80
1	B	215	GLY	N-CA-C	5.72	120.38	112.37
1	C	61	LYS	N-CA-C	-5.50	105.18	111.07
1	D	198	PHE	N-CA-C	5.50	117.99	111.33
1	C	366	VAL	N-CA-C	-5.46	100.46	108.11
1	A	482	GLU	N-CA-C	5.43	118.67	109.76
1	A	166	MET	CA-C-N	-5.35	113.76	120.51
1	A	166	MET	C-N-CA	-5.35	113.76	120.51
1	C	157	LEU	N-CA-C	5.24	116.96	108.41
1	D	227	LEU	N-CA-C	5.24	118.81	111.74
1	B	237	GLU	N-CA-C	5.22	116.65	111.07
1	B	304	THR	N-CA-C	-5.10	103.52	110.36
1	C	150	ARG	N-CA-C	-5.03	101.49	109.59
1	D	458	ILE	N-CA-C	5.02	115.81	108.58
1	A	9	VAL	CA-C-N	-5.01	116.73	122.95
1	A	9	VAL	C-N-CA	-5.01	116.73	122.95
1	D	484	MET	N-CA-C	-5.00	101.16	108.07

There are no chirality outliers.

All (3) planarity outliers are listed below:

Mol	Chain	Res	Type	Group
1	B	351	GLY	Peptide
1	D	396	PHE	Peptide
1	D	479	VAL	Peptide

## 5.2 Too-close contacts

In the following table, the Non-H and H(model) columns list the number of non-hydrogen atoms and hydrogen atoms in the chain respectively. The H(added) column lists the number of hydrogen atoms added and optimized by MolProbity. The Clashes column lists the number of clashes within the asymmetric unit, whereas Symm-Clashes lists symmetry-related clashes.

Mol	Chain	Non-H	H(model)	H(added)	Clashes	Symm-Clashes
1	A	3735	0	3751	103	0
1	B	3715	0	3741	110	0
1	C	3700	0	3712	83	0
1	D	3716	0	3723	126	0
2	A	53	0	31	0	0
2	B	53	0	31	2	0
2	C	53	0	31	0	0
2	D	53	0	31	4	0
3	A	23	0	17	2	0
3	B	23	0	17	4	0
3	C	23	0	17	2	0
3	D	23	0	17	1	0
4	A	2	0	0	0	0
4	B	2	0	0	0	0
4	C	2	0	0	0	0
4	D	2	0	0	1	0
5	A	1	0	0	0	0
5	B	2	0	0	0	0
5	C	1	0	0	0	0
5	D	2	0	0	0	0
6	A	16	0	28	9	0
7	D	16	0	28	26	0
8	A	71	0	0	4	0
8	B	44	0	0	3	0
8	C	36	0	0	4	0
8	D	56	0	0	8	0
All	All	15423	0	15175	411	0

The all-atom clashscore is defined as the number of clashes found per 1000 atoms (including hydrogen atoms). The all-atom clashscore for this structure is 14.

All (411) close contacts within the same asymmetric unit are listed below, sorted by their clash magnitude.

Atom-1	Atom-2	Interatomic distance (Å)	Clash overlap (Å)
1:B:250:MET:HE2	1:B:253:GLU:HG3	1.27	1.14

*Continued on next page...*

*Continued from previous page...*

Atom-1	Atom-2	Interatomic distance (Å)	Clash overlap (Å)
1:A:284:ALA:HA	6:A:1491:MRD:H5C2	1.19	1.08
1:B:234:ILE:O	1:B:238:VAL:HG12	1.55	1.06
1:C:348:THR:HB	8:C:2020:HOH:O	1.55	1.04
1:B:351:GLY:CA	1:B:352:ASN:HB2	1.86	1.03
1:D:485:GLU:O	1:D:485:GLU:HG2	1.60	1.02
1:A:284:ALA:HA	6:A:1491:MRD:C5	1.90	1.01
1:A:132:LYS:NZ	1:A:321:ASN:HB2	1.76	1.01
1:A:199:ILE:HD12	6:A:1491:MRD:H1C1	1.46	0.96
1:B:472:ARG:HG3	1:B:472:ARG:HH11	1.28	0.95
1:D:164:PRO:HB3	7:D:1491:MPD:H53	1.47	0.95
1:D:318:ASN:H	1:D:318:ASN:HD22	1.14	0.94
1:B:130:GLU:OE2	1:B:150:ARG:NH2	2.02	0.93
1:D:185:PRO:HD2	8:D:2025:HOH:O	1.72	0.90
1:C:130:GLU:HB2	1:C:136:VAL:HG22	1.53	0.90
1:A:485:GLU:HG3	1:A:486:LYS:HG2	1.53	0.88
1:B:351:GLY:HA3	1:B:352:ASN:HB2	1.53	0.88
1:A:21:TRP:CD1	3:A:1000:WP5:HAW3	2.09	0.88
1:A:387:GLU:OE1	1:A:480:LYS:HG2	1.75	0.86
1:D:199:ILE:HD12	7:D:1491:MPD:O2	1.76	0.85
1:D:286:GLY:N	7:D:1491:MPD:H11	1.90	0.85
1:B:448[B]:ASN:HD21	1:B:450:LYS:NZ	1.76	0.81
1:C:155:HIS:HD1	1:C:323:TYR:HH	1.24	0.81
1:D:284:ALA:HB1	7:D:1491:MPD:HM3	1.62	0.80
1:D:396:PHE:HD1	1:D:396:PHE:H	1.30	0.79
1:A:132:LYS:HZ2	1:A:321:ASN:HB2	1.48	0.79
1:D:377:LEU:HD23	7:D:1492:MPD:H11	1.66	0.77
1:C:295:GLN:HA	1:C:295:GLN:NE2	1.97	0.77
1:B:302:LYS:H	1:B:318:ASN:HD21	1.32	0.77
1:A:228:ARG:NH1	1:A:235:ARG:HH22	1.83	0.77
1:A:440:ALA:HB3	1:B:440:ALA:HB3	1.67	0.77
1:D:192:LEU:HD11	1:D:220:CYS:SG	2.26	0.76
1:D:286:GLY:H	7:D:1491:MPD:H11	1.49	0.76
1:D:284:ALA:HA	7:D:1491:MPD:H52	1.68	0.75
1:B:8:VAL:HG22	1:B:32:ALA:HB3	1.67	0.75
1:A:132:LYS:HZ1	1:A:321:ASN:HB2	1.51	0.75
1:B:472:ARG:HH11	1:B:472:ARG:CG	2.00	0.74
1:B:37:GLN:OE1	1:B:44:PHE:HB2	1.87	0.73
1:A:3:LYS:NZ	1:A:149:GLU:OE1	2.15	0.73
1:A:224:ASN:HB3	1:A:252:ASN:HD21	1.54	0.72
1:B:129:LEU:HD23	1:B:299:VAL:HG21	1.70	0.72
1:D:321:ASN:CB	8:D:2014:HOH:O	2.38	0.71

*Continued on next page...*

*Continued from previous page...*

Atom-1	Atom-2	Interatomic distance (Å)	Clash overlap (Å)
1:B:302:LYS:HD3	1:B:310:GLN:HE22	1.56	0.70
1:B:351:GLY:HA2	1:B:352:ASN:HB2	1.71	0.70
1:D:284:ALA:HB1	7:D:1491:MPD:CM	2.21	0.70
1:D:286:GLY:CA	7:D:1491:MPD:H13	2.22	0.70
1:B:60:LYS:NZ	2:B:998:FAD:O4	2.25	0.70
1:A:132:LYS:NZ	1:A:321:ASN:CB	2.55	0.69
1:A:157:LEU:HD11	1:A:325:ILE:HG12	1.75	0.69
1:A:22:ASN:O	1:A:26:LEU:HB2	1.93	0.69
1:A:221:TYR:CE2	1:A:223:ASN:HB2	2.27	0.69
1:D:286:GLY:N	7:D:1491:MPD:C1	2.54	0.69
1:A:485:GLU:HG3	1:A:486:LYS:CG	2.23	0.68
1:D:318:ASN:HD22	1:D:318:ASN:N	1.91	0.68
1:C:197:GLY:O	1:C:201:VAL:HG23	1.94	0.68
1:C:224:ASN:OD1	1:C:228:ARG:NH1	2.27	0.67
1:D:446:ARG:HB3	1:D:446:ARG:NH1	2.09	0.67
1:B:60:LYS:HE3	1:B:202:GLU:CD	2.20	0.67
1:B:472:ARG:HG3	1:B:472:ARG:NH1	2.03	0.66
1:D:69:TYR:O	1:D:73:LEU:HG	1.95	0.66
1:D:222:ARG:HD2	4:D:1487:CL:CL	2.33	0.66
1:D:321:ASN:HB3	8:D:2014:HOH:O	1.93	0.66
1:D:306:LYS:HZ1	1:D:306:LYS:H	1.44	0.65
1:B:60:LYS:HE3	1:B:202:GLU:OE1	1.96	0.65
1:B:346:VAL:HG13	1:B:350:PHE:HD2	1.60	0.65
1:D:352:ASN:C	1:D:352:ASN:ND2	2.55	0.65
1:B:296:LEU:HD12	1:B:303:LEU:HD21	1.79	0.64
1:A:198:PHE:O	1:A:202:GLU:HG3	1.97	0.64
1:B:351:GLY:CA	1:B:352:ASN:CB	2.67	0.64
1:B:302:LYS:H	1:B:318:ASN:ND2	1.95	0.64
1:B:9:VAL:HB	1:B:33:VAL:HG22	1.79	0.64
1:B:129:LEU:HD23	1:B:299:VAL:CG2	2.28	0.64
1:B:302:LYS:HD3	1:B:310:GLN:NE2	2.13	0.63
1:D:227:LEU:HB2	1:D:235:ARG:HG2	1.81	0.63
1:D:314:PHE:O	1:D:315:SER:HB2	1.99	0.63
1:D:199:ILE:HB	7:D:1491:MPD:CM	2.29	0.63
1:D:287:ARG:HG3	7:D:1491:MPD:H32	1.81	0.63
1:D:104:LEU:HG	1:D:108:LYS:HE3	1.80	0.62
1:C:170:PRO:HG2	1:C:257:LYS:HB3	1.82	0.62
1:B:253:GLU:OE1	8:B:2023:HOH:O	2.16	0.62
1:C:348:THR:HG23	1:C:354:PRO:HA	1.80	0.62
1:A:59:PRO:HB3	1:A:99:LYS:HD3	1.82	0.62
1:D:446:ARG:HB3	1:D:446:ARG:HH11	1.66	0.61

*Continued on next page...*

*Continued from previous page...*

Atom-1	Atom-2	Interatomic distance (Å)	Clash overlap (Å)
1:A:69:TYR:HA	1:A:72:HIS:HB2	1.83	0.60
1:D:396:PHE:CD1	1:D:396:PHE:N	2.68	0.60
1:B:44:PHE:CE1	1:B:126:TRP:HZ2	2.19	0.60
1:D:93:LYS:HE3	8:D:2024:HOH:O	2.01	0.60
1:D:243:THR:HA	1:D:247:ILE:O	2.01	0.60
1:B:2:SER:C	1:B:3:LYS:HG2	2.26	0.60
1:A:132:LYS:HZ2	1:A:321:ASN:CB	2.13	0.60
1:D:286:GLY:HA2	7:D:1491:MPD:H13	1.84	0.60
1:C:440:ALA:HB3	1:D:440:ALA:HB3	1.83	0.60
1:B:448[B]:ASN:HD21	1:B:450:LYS:HZ3	1.47	0.60
1:B:17:LEU:HD12	3:B:1000:WP5:BRA	2.56	0.59
1:D:318:ASN:H	1:D:318:ASN:ND2	1.90	0.59
1:B:250:MET:CE	1:B:253:GLU:HG3	2.18	0.59
1:A:148:LYS:C	1:A:149:GLU:HG2	2.28	0.59
1:B:225:LEU:HB3	1:B:235:ARG:NH2	2.18	0.59
1:C:60:LYS:HE3	1:C:202:GLU:OE1	2.03	0.59
1:A:148:LYS:O	1:A:149:GLU:HG2	2.04	0.58
1:D:286:GLY:H	7:D:1491:MPD:C1	2.14	0.58
1:A:400:MET:HG3	1:A:401:HIS:N	2.18	0.58
1:B:130:GLU:HB2	1:B:136:VAL:HB	1.84	0.58
1:C:60:LYS:HE3	1:C:202:GLU:CD	2.29	0.58
1:A:266:LYS:HE3	1:A:279:ASP:O	2.04	0.58
1:C:484:MET:HE2	1:C:486:LYS:HB2	1.86	0.58
1:D:170:PRO:HG2	1:D:257:LYS:HB3	1.85	0.58
1:B:397:THR:OG1	1:B:410:LYS:NZ	2.37	0.57
1:D:227:LEU:HD12	1:D:238:VAL:HG11	1.86	0.57
1:D:199:ILE:HB	7:D:1491:MPD:HM1	1.86	0.57
1:D:479:VAL:O	1:D:480:LYS:C	2.47	0.57
1:B:167:PRO:O	1:B:172:ILE:HG12	2.03	0.57
1:D:13:GLY:HA3	2:D:998:FAD:H52A	1.85	0.57
1:C:265:SER:C	1:C:266:LYS:HD3	2.29	0.57
1:C:358:ASP:OD2	1:C:446:ARG:NH2	2.37	0.57
1:B:253:GLU:OE1	1:B:253:GLU:HA	2.05	0.56
1:C:228:ARG:HE	1:C:235:ARG:HH22	1.52	0.56
1:B:351:GLY:HA2	1:B:352:ASN:CB	2.33	0.56
1:A:224:ASN:O	1:A:251:THR:HG21	2.05	0.56
1:A:462:PRO:HG2	1:B:61:LYS:HG2	1.86	0.56
1:C:69:TYR:HA	1:C:72:HIS:HB2	1.86	0.56
1:A:228:ARG:NH1	1:A:235:ARG:NH2	2.54	0.56
1:B:18:GLU:HG2	1:B:339:ILE:HG23	1.87	0.56
1:B:189:ARG:HA	1:B:212:PRO:HD2	1.86	0.56

*Continued on next page...*

*Continued from previous page...*

Atom-1	Atom-2	Interatomic distance (Å)	Clash overlap (Å)
1:D:378:ILE:HG12	8:D:2045:HOH:O	2.05	0.56
1:B:154:ASP:O	1:B:321:ASN:CG	2.48	0.56
1:C:155:HIS:ND1	1:C:323:TYR:OH	2.25	0.56
1:B:104:LEU:O	1:B:108:LYS:HG3	2.04	0.55
1:C:198:PHE:HB2	1:C:366:VAL:HG13	1.89	0.55
1:C:131:SER:O	1:C:133:ASN:N	2.39	0.55
1:D:40:HIS:H	1:D:107:ASN:ND2	2.04	0.55
1:A:69:TYR:O	1:A:73:LEU:HG	2.07	0.55
1:D:434:ALA:HB3	1:D:435:PRO:HD3	1.88	0.55
1:C:40:HIS:H	1:C:107:ASN:ND2	2.05	0.55
1:D:341:GLU:OE2	1:D:359:HIS:HE1	1.89	0.55
1:C:459:GLY:O	1:D:336:PRO:HG2	2.06	0.55
1:A:429:LEU:HD21	1:A:468:LEU:HD21	1.88	0.55
1:B:176:ILE:HB	1:B:180:GLU:HB2	1.89	0.54
1:C:4:ALA:HB2	1:C:152:GLN:HB2	1.89	0.54
1:A:331[B]:ARG:HB3	8:A:2050:HOH:O	2.06	0.54
1:C:166:MET:HE3	1:C:172:ILE:HD11	1.89	0.54
1:D:341:GLU:OE2	1:D:359:HIS:CE1	2.60	0.54
1:A:129:LEU:HD23	1:A:299:VAL:HG21	1.88	0.54
1:D:352:ASN:C	1:D:352:ASN:HD22	2.15	0.54
1:B:95:LEU:HD22	1:B:210:TYR:CZ	2.42	0.54
1:D:92:TRP:O	1:D:93:LYS:C	2.51	0.54
1:A:413:ALA:HA	1:A:429:LEU:HD23	1.90	0.54
1:B:335:THR:HB	1:B:336:PRO:HD3	1.90	0.54
1:A:174:HIS:CE1	1:A:260:LEU:HG	2.43	0.53
1:A:286:GLY:CA	6:A:1491:MRD:O2	2.56	0.53
1:C:341:GLU:OE2	1:C:359:HIS:HE1	1.91	0.53
1:A:132:LYS:NZ	1:A:320:PRO:O	2.40	0.53
1:A:161:GLY:HA2	1:A:327:ASP:HB2	1.91	0.53
1:B:263:ASP:OD1	1:B:263:ASP:C	2.52	0.53
1:C:241:GLN:OE1	1:C:370:PRO:HG3	2.08	0.53
1:D:8:VAL:HG22	1:D:32:ALA:HB3	1.91	0.53
1:A:132:LYS:CE	1:A:320:PRO:O	2.57	0.52
1:B:415:ILE:HG13	1:B:471:MET:HE3	1.91	0.52
2:D:998:FAD:H5'1	2:D:998:FAD:O1A	2.10	0.52
1:A:176:ILE:HB	1:A:180:GLU:HB2	1.91	0.52
1:A:302:LYS:H	1:A:318:ASN:ND2	2.06	0.52
1:C:110:TYR:CE2	3:C:1000:WP5:HAI	2.45	0.52
1:D:192:LEU:HA	1:D:218:THR:O	2.10	0.52
1:D:286:GLY:CA	7:D:1491:MPD:C1	2.88	0.52
1:C:110:TYR:CZ	3:C:1000:WP5:HAI	2.45	0.52

*Continued on next page...*

*Continued from previous page...*

Atom-1	Atom-2	Interatomic distance (Å)	Clash overlap (Å)
1:D:45:TYR:HB3	1:D:55:VAL:HG11	1.92	0.52
1:A:463:THR:O	1:A:466:GLU:HG2	2.09	0.52
1:D:467:GLU:O	1:D:471:MET:HE2	2.09	0.52
1:B:257:LYS:HG3	8:B:2025:HOH:O	2.10	0.52
1:A:396:PHE:H	1:A:396:PHE:HD1	1.53	0.51
1:B:14:SER:HB2	2:B:998:FAD:O5'	2.10	0.51
1:B:142:ASP:C	1:B:144:LYS:H	2.18	0.51
1:B:133:ASN:ND2	1:B:153:ALA:O	2.36	0.51
1:B:18:GLU:CG	1:B:339:ILE:HG23	2.41	0.51
1:C:218:THR:HG23	1:C:248:GLU:HG2	1.92	0.51
1:B:331[B]:ARG:NH2	1:B:359:HIS:CD2	2.79	0.51
1:A:301:VAL:HA	1:A:318:ASN:HD21	1.75	0.51
1:D:302:LYS:H	1:D:318:ASN:HD21	1.58	0.51
1:A:118:GLU:HA	1:A:118:GLU:OE1	2.10	0.51
1:A:132:LYS:HE2	1:A:320:PRO:O	2.11	0.51
1:A:395:SER:HA	1:A:411:PHE:O	2.11	0.51
1:A:421:ASP:O	1:A:450:LYS:HD3	2.10	0.51
1:B:348:THR:HA	1:B:354:PRO:HA	1.93	0.51
1:B:253:GLU:OE1	1:B:272:SER:HB3	2.11	0.50
1:C:60:LYS:HD2	1:C:61:LYS:N	2.26	0.50
1:C:295:GLN:NE2	1:C:295:GLN:CA	2.72	0.50
1:C:447:LEU:HD11	1:D:449:ALA:HB2	1.93	0.50
1:D:126:TRP:CD1	1:D:140:THR:HA	2.46	0.50
1:B:408:TYR:CE2	1:B:409:LYS:HG3	2.46	0.50
1:C:302:LYS:HG2	1:C:310:GLN:NE2	2.27	0.50
1:A:21:TRP:NE1	3:A:1000:WP5:HAW3	2.26	0.50
1:A:287:ARG:HG3	6:A:1491:MRD:H4	1.94	0.50
1:D:171:GLY:HA3	1:D:258:VAL:O	2.12	0.50
1:B:463:THR:O	1:B:466:GLU:HG2	2.12	0.50
1:D:360:THR:HB	7:D:1492:MPD:HM1	1.93	0.50
1:D:164:PRO:HB3	7:D:1491:MPD:C5	2.30	0.50
1:D:302:LYS:H	1:D:318:ASN:ND2	2.09	0.50
1:B:197:GLY:O	1:B:201:VAL:HG23	2.13	0.49
1:C:52:CYS:HB2	1:C:335:THR:OG1	2.12	0.49
1:C:224:ASN:OD1	1:C:224:ASN:N	2.31	0.49
1:D:190:ARG:HB2	1:D:278:VAL:HA	1.94	0.49
1:C:81:TRP:NE1	1:D:69:TYR:HB2	2.25	0.49
1:C:126:TRP:CD1	1:C:140:THR:HA	2.48	0.49
1:D:189:ARG:HB3	1:D:279:ASP:OD2	2.12	0.49
1:C:109:SER:O	1:C:113:MET:HG3	2.13	0.49
1:D:390:ALA:HB3	1:D:417:THR:OG1	2.13	0.49

*Continued on next page...*

*Continued from previous page...*

Atom-1	Atom-2	Interatomic distance (Å)	Clash overlap (Å)
1:B:44:PHE:CZ	1:B:126:TRP:HZ2	2.31	0.49
1:C:295:GLN:HA	1:C:295:GLN:HE21	1.76	0.49
1:B:479:VAL:C	1:B:481:GLY:H	2.20	0.49
1:C:40:HIS:H	1:C:107:ASN:HD21	1.60	0.49
1:C:250:MET:HE2	1:C:253:GLU:HG3	1.94	0.49
1:D:352:ASN:HD22	1:D:353:LYS:N	2.11	0.49
1:C:392:TYR:O	1:C:414:LYS:HA	2.12	0.49
1:B:477:TYR:O	1:B:483:LYS:HA	2.12	0.49
1:A:349:VAL:HG12	1:A:350:PHE:CD2	2.48	0.48
1:B:63:MET:HA	1:B:95:LEU:HD11	1.96	0.48
1:D:261:ASN:OD1	1:D:267:HIS:HB2	2.13	0.48
1:D:8:VAL:CG2	1:D:153:ALA:HB2	2.44	0.48
1:D:221:TYR:CE2	1:D:223:ASN:HB2	2.48	0.48
1:D:485:GLU:O	1:D:485:GLU:CG	2.46	0.48
1:C:400:MET:HE2	1:C:401:HIS:CE1	2.48	0.48
1:D:321:ASN:HB2	8:D:2014:HOH:O	2.05	0.48
1:A:232:GLU:OE1	8:A:2026:HOH:O	2.20	0.48
1:B:341:GLU:OE2	1:B:359:HIS:HE1	1.96	0.48
1:A:186:GLU:HB2	1:A:187:PRO:HD2	1.96	0.48
1:B:479:VAL:C	1:B:481:GLY:N	2.72	0.48
1:C:345:LEU:HA	8:C:2020:HOH:O	2.14	0.48
1:B:461:HIS:HA	1:B:462:PRO:HA	1.71	0.47
1:A:63:MET:HG2	1:A:95:LEU:HD21	1.97	0.47
1:A:439:GLN:OE1	1:B:466:GLU:HA	2.14	0.47
1:B:104:LEU:O	1:B:107:ASN:HB2	2.15	0.47
1:A:132:LYS:HZ1	1:A:321:ASN:CB	2.22	0.47
1:B:346:VAL:HG13	1:B:350:PHE:CD2	2.47	0.47
1:C:282:MET:HE3	1:C:284:ALA:HB2	1.95	0.47
1:C:399:LEU:O	1:C:400:MET:C	2.54	0.47
1:D:130:GLU:HB2	1:D:136:VAL:HG23	1.95	0.47
2:D:998:FAD:HM81	2:D:998:FAD:HM73	1.69	0.47
1:A:485:GLU:C	1:A:486:LYS:HG2	2.40	0.47
1:D:45:TYR:CD2	1:D:45:TYR:N	2.81	0.47
1:D:399:LEU:HD12	1:D:402:ASN:HB2	1.95	0.47
1:B:220:CYS:HA	1:B:250:MET:O	2.14	0.47
1:D:129:LEU:HD11	1:D:156:ILE:HG21	1.97	0.47
1:A:320:PRO:C	1:A:322:ILE:H	2.23	0.47
1:A:460:VAL:HG13	1:B:364:SER:HA	1.96	0.47
1:D:21:TRP:CD1	3:D:1000:WP5:HAW3	2.50	0.47
1:A:306:LYS:CD	1:A:306:LYS:H	2.27	0.47
1:C:60:LYS:C	1:C:60:LYS:CD	2.88	0.47

*Continued on next page...*

*Continued from previous page...*

Atom-1	Atom-2	Interatomic distance (Å)	Clash overlap (Å)
1:D:479:VAL:HG22	1:D:480:LYS:H	1.80	0.46
1:B:415:ILE:HG13	1:B:471:MET:CE	2.45	0.46
1:B:221:TYR:CE2	1:B:223:ASN:HB2	2.49	0.46
1:D:199:ILE:HB	7:D:1491:MPD:HM2	1.98	0.46
1:D:377:LEU:HG	7:D:1492:MPD:H4	1.97	0.46
1:B:154:ASP:O	1:B:321:ASN:ND2	2.48	0.46
1:C:137:VAL:O	1:C:148:LYS:HB2	2.15	0.46
1:C:460:VAL:HG13	1:D:364:SER:HA	1.98	0.46
1:D:306:LYS:H	1:D:306:LYS:NZ	2.13	0.46
1:A:286:GLY:N	6:A:1491:MRD:O2	2.49	0.46
1:C:131:SER:O	1:C:134:VAL:N	2.40	0.46
1:C:341:GLU:OE2	1:C:359:HIS:CE1	2.69	0.46
1:D:212:PRO:CB	1:D:213:PRO:HD2	2.46	0.45
1:B:411:PHE:CD1	1:B:431:GLY:HA3	2.51	0.45
1:A:71:ASP:OD2	1:A:409:LYS:NZ	2.38	0.45
1:B:61:LYS:HE3	1:B:367:PHE:CE1	2.51	0.45
1:A:441:VAL:O	1:A:444:CYS:HB2	2.17	0.45
1:D:461:HIS:HA	1:D:462:PRO:HA	1.61	0.45
1:B:157:LEU:HD12	1:B:158:LEU:N	2.31	0.45
1:C:142:ASP:HA	1:C:143:PRO:HD3	1.84	0.45
1:C:417:THR:HG21	1:C:451:ILE:HB	1.99	0.45
1:D:461:HIS:HD1	1:D:466:GLU:CD	2.24	0.45
1:D:51:THR:O	1:D:52:CYS:C	2.59	0.45
1:D:202:GLU:O	1:D:206:ILE:HG13	2.17	0.45
1:D:387:GLU:HG3	1:D:480:LYS:HD3	1.99	0.45
1:A:69:TYR:CD1	1:B:76:SER:HB3	2.51	0.45
1:A:366:VAL:HB	1:A:372:ILE:HB	1.99	0.45
1:A:461:HIS:HA	1:A:462:PRO:HA	1.81	0.45
1:C:129:LEU:HD11	1:C:156:ILE:HG21	1.98	0.45
1:A:239:THR:O	1:A:240:LYS:C	2.60	0.45
1:C:447:LEU:HD21	1:D:453:ASP:CG	2.42	0.45
1:D:320:PRO:O	1:D:321:ASN:HB2	2.17	0.45
1:A:173:GLU:OE1	1:A:173:GLU:N	2.44	0.44
1:B:351:GLY:HA2	1:B:352:ASN:ND2	2.32	0.44
1:C:227:LEU:HB2	1:C:235:ARG:HG2	1.99	0.44
1:C:461:HIS:HA	1:C:462:PRO:HA	1.76	0.44
1:C:479:VAL:O	1:C:480:LYS:C	2.60	0.44
1:A:75:GLU:OE2	1:A:409:LYS:NZ	2.37	0.44
1:B:34:VAL:HA	1:B:123:PHE:O	2.17	0.44
1:B:242:LEU:HD22	1:B:247:ILE:HD12	2.00	0.44
1:D:283:MET:O	7:D:1491:MPD:H52	2.18	0.44

*Continued on next page...*

*Continued from previous page...*

Atom-1	Atom-2	Interatomic distance (Å)	Clash overlap (Å)
1:D:301:VAL:HA	1:D:318:ASN:HD21	1.82	0.44
1:C:370:PRO:HG3	8:C:2015:HOH:O	2.15	0.44
1:D:348:THR:HA	1:D:354:PRO:HA	1.99	0.44
1:A:451:ILE:O	1:A:454:PHE:HB2	2.17	0.44
1:B:392:TYR:O	1:B:414:LYS:HA	2.17	0.44
1:D:140:THR:HB	8:D:2015:HOH:O	2.18	0.44
1:D:360:THR:HB	7:D:1492:MPD:O4	2.17	0.44
1:A:13:GLY:HA2	1:A:50:GLY:HA3	1.99	0.44
1:A:173:GLU:H	1:A:173:GLU:CD	2.23	0.44
1:A:436:GLU:HB3	1:B:437:ILE:HG12	1.99	0.44
1:B:270:PHE:HB3	8:B:2023:HOH:O	2.17	0.44
1:D:99:LYS:HD2	1:D:99:LYS:C	2.43	0.44
1:D:52:CYS:HB2	1:D:335:THR:OG1	2.17	0.44
1:B:378:ILE:HD12	1:B:380:GLU:OE1	2.17	0.44
1:D:387:GLU:O	1:D:479:VAL:HA	2.18	0.44
1:B:219:LEU:C	1:B:219:LEU:HD23	2.43	0.43
1:D:40:HIS:H	1:D:107:ASN:HD21	1.66	0.43
1:A:287:ARG:CG	6:A:1491:MRD:H1C2	2.47	0.43
1:A:396:PHE:CD1	1:A:396:PHE:N	2.72	0.43
6:A:1491:MRD:HMC1	8:A:2041:HOH:O	2.18	0.43
1:D:41:GLY:O	1:D:45:TYR:N	2.45	0.43
1:D:241:GLN:NE2	1:D:410:LYS:H	2.16	0.43
1:C:38:THR:O	1:C:48:LEU:HB3	2.18	0.43
1:C:130:GLU:OE1	1:C:134:VAL:HG11	2.17	0.43
1:D:480:LYS:HD2	1:D:480:LYS:HA	1.88	0.43
1:A:353:LYS:HA	1:A:354:PRO:HD2	1.84	0.43
1:A:453:ASP:OD2	1:B:447:LEU:HD21	2.17	0.43
1:B:242:LEU:CD2	1:B:247:ILE:HD12	2.48	0.43
1:C:314:PHE:O	1:C:315:SER:HB2	2.18	0.43
1:C:331[B]:ARG:NH2	1:C:359:HIS:CD2	2.87	0.43
1:D:44:PHE:O	1:D:46:ALA:N	2.50	0.43
1:D:318:ASN:N	1:D:318:ASN:ND2	2.54	0.43
2:D:998:FAD:H5'1	2:D:998:FAD:PA	2.58	0.43
1:D:190:ARG:HD2	1:D:277:ASP:O	2.19	0.43
1:A:190:ARG:HB3	1:A:278:VAL:HG12	2.00	0.43
1:B:438:ILE:O	1:B:441:VAL:HB	2.18	0.43
1:C:449:ALA:HB1	1:C:454:PHE:HE2	1.83	0.43
1:C:4:ALA:CB	1:C:152:GLN:HB2	2.49	0.43
1:A:320:PRO:O	1:A:321:ASN:HB2	2.18	0.43
1:B:268:VAL:O	1:B:275:THR:HA	2.18	0.43
1:D:63:MET:HG2	1:D:95:LEU:HD21	2.00	0.43

*Continued on next page...*

*Continued from previous page...*

Atom-1	Atom-2	Interatomic distance (Å)	Clash overlap (Å)
1:D:328:ILE:HG12	1:D:328:ILE:O	2.18	0.43
1:B:44:PHE:CE1	1:B:126:TRP:CZ2	3.04	0.43
1:B:366:VAL:HB	1:B:372:ILE:HB	2.01	0.43
1:D:249:ILE:HG22	1:D:251:THR:HG23	2.00	0.43
1:B:265:SER:HB2	1:B:278:VAL:O	2.19	0.43
1:A:1:MET:HE3	1:A:1:MET:HB2	1.92	0.42
1:A:408:TYR:CE2	1:A:409:LYS:HG3	2.54	0.42
1:D:188:PRO:HD2	8:D:2026:HOH:O	2.18	0.42
1:A:171:GLY:HA3	1:A:258:VAL:O	2.19	0.42
1:D:9:VAL:HG22	1:D:157:LEU:HB3	2.00	0.42
1:A:35:ASP:OD1	1:A:36:VAL:N	2.51	0.42
1:A:438:ILE:HD12	1:A:438:ILE:HA	1.88	0.42
1:C:15:GLY:HA3	1:C:325:ILE:HD13	2.00	0.42
1:D:312:ASP:C	1:D:314:PHE:H	2.27	0.42
1:D:361:ARG:HG3	7:D:1492:MPD:H53	2.01	0.42
1:A:285:ILE:N	6:A:1491:MRD:H5C3	2.34	0.42
1:B:18:GLU:OE1	3:B:1000:WP5:NAT	2.52	0.42
1:C:69:TYR:CD1	1:D:76:SER:HB3	2.55	0.42
1:A:91:ASN:HB3	1:B:80:GLY:O	2.19	0.42
1:A:27:TYR:HE2	1:A:346:VAL:HG12	1.83	0.42
1:B:21:TRP:CD1	3:B:1000:WP5:HAW3	2.55	0.42
1:C:474:PRO:HG2	1:C:477:TYR:OH	2.20	0.42
1:D:199:ILE:HD12	7:D:1491:MPD:CM	2.49	0.42
1:D:337:VAL:O	1:D:341:GLU:HB2	2.20	0.42
1:A:62:LEU:HD23	1:A:62:LEU:HA	1.93	0.42
1:D:408:TYR:CE2	1:D:409:LYS:HG3	2.54	0.42
1:A:437:ILE:HG12	1:A:465:ALA:HB2	2.02	0.42
1:B:479:VAL:O	1:B:481:GLY:N	2.53	0.42
1:C:176:ILE:HB	1:C:180:GLU:HB2	2.02	0.42
1:D:183:TYR:O	1:D:184:LEU:C	2.62	0.42
1:D:237:GLU:OE1	1:D:240:LYS:NZ	2.53	0.42
1:D:190:ARG:HA	1:D:216:LYS:O	2.20	0.41
1:A:155:HIS:HB3	1:A:323:TYR:HE2	1.84	0.41
1:B:22:ASN:O	1:B:26:LEU:HB2	2.20	0.41
1:B:353:LYS:HA	1:B:354:PRO:HD2	1.83	0.41
1:D:352:ASN:O	1:D:354:PRO:HD2	2.20	0.41
7:D:1491:MPD:HM1	7:D:1491:MPD:H4	1.89	0.41
1:B:63:MET:HB2	1:B:206:ILE:HD13	2.01	0.41
1:C:392:TYR:CZ	1:C:474:PRO:HG3	2.56	0.41
1:D:361:ARG:N	7:D:1492:MPD:O2	2.45	0.41
1:B:110:TYR:CE2	3:B:1000:WP5:HAI	2.56	0.41

*Continued on next page...*

*Continued from previous page...*

Atom-1	Atom-2	Interatomic distance (Å)	Clash overlap (Å)
1:C:449:ALA:HB1	1:C:454:PHE:CE2	2.54	0.41
1:A:228:ARG:HG2	1:A:228:ARG:HH11	1.85	0.41
1:A:249:ILE:O	1:A:249:ILE:HG22	2.20	0.41
1:C:331[B]:ARG:HH21	1:C:359:HIS:CD2	2.38	0.41
1:A:212:PRO:CB	1:A:213:PRO:HD2	2.51	0.41
1:B:60:LYS:HD2	1:B:61:LYS:N	2.35	0.41
1:B:473:THR:HA	1:B:474:PRO:HD3	1.91	0.41
1:A:228:ARG:HH11	1:A:228:ARG:CG	2.33	0.41
1:A:398:PRO:HD3	1:A:411:PHE:H	1.86	0.41
1:C:63:MET:HG2	1:C:95:LEU:HD21	2.03	0.41
1:D:393:MET:HG3	1:D:414:LYS:CG	2.51	0.41
1:A:479:VAL:O	1:A:480:LYS:C	2.64	0.41
1:C:39:SER:HA	1:C:107:ASN:ND2	2.36	0.41
1:D:399:LEU:O	1:D:400:MET:C	2.63	0.41
1:A:447:LEU:HD23	1:A:447:LEU:HA	1.88	0.40
1:B:274[B]:LYS:HE2	1:B:274[B]:LYS:HB2	1.47	0.40
1:C:64:VAL:HG23	1:C:206:ILE:HD11	2.03	0.40
1:C:480:LYS:HD2	1:C:480:LYS:HA	1.71	0.40
1:D:475:SER:O	1:D:476:TYR:HB3	2.20	0.40
1:A:478:TYR:HA	1:A:482:GLU:O	2.21	0.40
1:C:250:MET:HE2	1:C:253:GLU:CG	2.51	0.40
1:C:396:PHE:H	1:C:396:PHE:HD1	1.66	0.40
1:C:399:LEU:C	1:C:401:HIS:N	2.75	0.40
1:C:464:SER:O	1:C:465:ALA:C	2.62	0.40
1:A:90:ALA:HB2	1:B:81:TRP:CH2	2.57	0.40
1:A:92:TRP:O	1:A:96:ILE:HG12	2.22	0.40
1:B:455:TYR:HB2	1:B:472:ARG:NH1	2.37	0.40
1:C:40:HIS:N	1:C:107:ASN:ND2	2.70	0.40
1:C:292:ASN:HB2	8:C:2019:HOH:O	2.21	0.40
1:D:7:LEU:HB3	1:D:31:VAL:HG22	2.03	0.40
1:D:433:GLY:O	1:D:434:ALA:C	2.64	0.40
1:A:8:VAL:HG22	1:A:32:ALA:HB3	2.03	0.40
1:B:9:VAL:HG22	1:B:157:LEU:HB3	2.02	0.40
1:B:95:LEU:HD22	1:B:210:TYR:CE2	2.57	0.40
1:C:295:GLN:CA	1:C:295:GLN:HE21	2.34	0.40
1:A:75:GLU:HA	8:A:2061:HOH:O	2.21	0.40
1:A:411:PHE:CD1	1:A:431:GLY:HA3	2.57	0.40
1:B:321:ASN:HD22	1:B:321:ASN:HA	1.72	0.40
1:C:250:MET:HE2	1:C:253:GLU:CB	2.52	0.40
1:D:400:MET:HG3	1:D:401:HIS:N	2.36	0.40

There are no symmetry-related clashes.

## 5.3 Torsion angles [i](#)

### 5.3.1 Protein backbone [i](#)

In the following table, the Percentiles column shows the percent Ramachandran outliers of the chain as a percentile score with respect to all X-ray entries followed by that with respect to entries of similar resolution.

The Analysed column shows the number of residues for which the backbone conformation was analysed, and the total number of residues.

Mol	Chain	Analysed	Favoured	Allowed	Outliers	Percentiles	
1	A	489/495 (99%)	456 (93%)	31 (6%)	2 (0%)	30	60
1	B	488/495 (99%)	440 (90%)	41 (8%)	7 (1%)	9	30
1	C	485/495 (98%)	446 (92%)	32 (7%)	7 (1%)	9	30
1	D	487/495 (98%)	450 (92%)	33 (7%)	4 (1%)	16	44
All	All	1949/1980 (98%)	1792 (92%)	137 (7%)	20 (1%)	12	38

All (20) Ramachandran outliers are listed below:

Mol	Chain	Res	Type
1	A	480	LYS
1	C	132	LYS
1	C	133	ASN
1	D	213	PRO
1	C	298	ASN
1	C	352	ASN
1	D	480	LYS
1	B	271	GLU
1	B	320	PRO
1	B	352	ASN
1	B	480	LYS
1	B	45	TYR
1	B	252	ASN
1	D	331	ARG
1	A	352	ASN
1	B	476	TYR
1	C	45	TYR
1	C	465	ALA
1	D	45	TYR
1	C	213	PRO

### 5.3.2 Protein sidechains [i](#)

In the following table, the Percentiles column shows the percent sidechain outliers of the chain as a percentile score with respect to all X-ray entries followed by that with respect to entries of similar resolution.

The Analysed column shows the number of residues for which the sidechain conformation was analysed, and the total number of residues.

Mol	Chain	Analysed	Rotameric	Outliers	Percentiles	
1	A	404/407 (99%)	373 (92%)	31 (8%)	12	36
1	B	403/407 (99%)	365 (91%)	38 (9%)	8	27
1	C	400/407 (98%)	357 (89%)	43 (11%)	6	21
1	D	402/407 (99%)	374 (93%)	28 (7%)	14	40
All	All	1609/1628 (99%)	1469 (91%)	140 (9%)	10	30

All (140) residues with a non-rotameric sidechain are listed below:

Mol	Chain	Res	Type
1	A	3	LYS
1	A	39	SER
1	A	57	CYS
1	A	60	LYS
1	A	86	SER
1	A	116	ASP
1	A	118	GLU
1	A	132	LYS
1	A	191	VAL
1	A	219	LEU
1	A	228	ARG
1	A	238	VAL
1	A	249	ILE
1	A	251	THR
1	A	266	LYS
1	A	306	LYS
1	A	331[A]	ARG
1	A	331[B]	ARG
1	A	335	THR
1	A	349	VAL
1	A	374	THR
1	A	387	GLU
1	A	389	VAL
1	A	393	MET

*Continued on next page...*

*Continued from previous page...*

<b>Mol</b>	<b>Chain</b>	<b>Res</b>	<b>Type</b>
1	A	400	MET
1	A	438	ILE
1	A	446	ARG
1	A	458	ILE
1	A	460	VAL
1	A	480	LYS
1	A	486	LYS
1	B	3	LYS
1	B	26	LEU
1	B	57	CYS
1	B	60	LYS
1	B	111	GLU
1	B	129	LEU
1	B	136	VAL
1	B	149	GLU
1	B	152	GLN
1	B	160	THR
1	B	162	SER
1	B	165	GLN
1	B	172	ILE
1	B	178	SER
1	B	238	VAL
1	B	260	LEU
1	B	288	ILE
1	B	291	THR
1	B	292	ASN
1	B	293	ASP
1	B	306	LYS
1	B	320	PRO
1	B	321	ASN
1	B	331[A]	ARG
1	B	331[B]	ARG
1	B	349	VAL
1	B	356	LYS
1	B	380	GLU
1	B	400	MET
1	B	407	LYS
1	B	410	LYS
1	B	415	ILE
1	B	420	SER
1	B	472	ARG
1	B	473	THR

*Continued on next page...*

*Continued from previous page...*

<b>Mol</b>	<b>Chain</b>	<b>Res</b>	<b>Type</b>
1	B	475	SER
1	B	485	GLU
1	B	486	LYS
1	C	2	SER
1	C	39	SER
1	C	57	CYS
1	C	60	LYS
1	C	94	LYS
1	C	108	LYS
1	C	118	GLU
1	C	120	LEU
1	C	128	SER
1	C	129	LEU
1	C	132	LYS
1	C	136	VAL
1	C	139	GLU
1	C	224	ASN
1	C	228	ARG
1	C	248	GLU
1	C	249	ILE
1	C	260	LEU
1	C	262	THR
1	C	266	LYS
1	C	276	LEU
1	C	288	ILE
1	C	289	PRO
1	C	295	GLN
1	C	299	VAL
1	C	304	THR
1	C	306	LYS
1	C	323	TYR
1	C	325	ILE
1	C	331[A]	ARG
1	C	331[B]	ARG
1	C	335	THR
1	C	369	ILE
1	C	380	GLU
1	C	388	LYS
1	C	399	LEU
1	C	400	MET
1	C	407	LYS
1	C	448	ASN

*Continued on next page...*

*Continued from previous page...*

Mol	Chain	Res	Type
1	C	460	VAL
1	C	480	LYS
1	C	485	GLU
1	C	486	LYS
1	D	2	SER
1	D	57	CYS
1	D	60	LYS
1	D	89	LYS
1	D	129	LEU
1	D	149	GLU
1	D	150	ARG
1	D	186	GLU
1	D	191	VAL
1	D	213	PRO
1	D	237	GLU
1	D	242	LEU
1	D	266	LYS
1	D	274	LYS
1	D	288	ILE
1	D	306	LYS
1	D	313	GLU
1	D	318	ASN
1	D	328	ILE
1	D	335	THR
1	D	341	GLU
1	D	352	ASN
1	D	353	LYS
1	D	396	PHE
1	D	406	SER
1	D	430	LEU
1	D	446	ARG
1	D	486	LYS

Sometimes sidechains can be flipped to improve hydrogen bonding and reduce clashes. All (27) such sidechains are listed below:

Mol	Chain	Res	Type
1	A	223	ASN
1	A	252	ASN
1	A	261	ASN
1	A	318	ASN
1	A	321	ASN
1	B	223	ASN

*Continued on next page...*

*Continued from previous page...*

Mol	Chain	Res	Type
1	B	252	ASN
1	B	310	GLN
1	B	318	ASN
1	B	321	ASN
1	B	352	ASN
1	B	359	HIS
1	C	22	ASN
1	C	107	ASN
1	C	223	ASN
1	C	295	GLN
1	C	310	GLN
1	C	340	ASN
1	C	359	HIS
1	C	419	HIS
1	D	107	ASN
1	D	252	ASN
1	D	318	ASN
1	D	321	ASN
1	D	352	ASN
1	D	359	HIS
1	D	419	HIS

### 5.3.3 RNA [i](#)

There are no RNA molecules in this entry.

### 5.4 Non-standard residues in protein, DNA, RNA chains [i](#)

There are no non-standard protein/DNA/RNA residues in this entry.

### 5.5 Carbohydrates [i](#)

There are no oligosaccharides in this entry.

### 5.6 Ligand geometry [i](#)

Of 26 ligands modelled in this entry, 14 are monoatomic - leaving 12 for Mogul analysis.

In the following table, the Counts columns list the number of bonds (or angles) for which Mogul statistics could be retrieved, the number of bonds (or angles) that are observed in the model and the number of bonds (or angles) that are defined in the Chemical Component Dictionary. The

Link column lists molecule types, if any, to which the group is linked. The Z score for a bond length (or angle) is the number of standard deviations the observed value is removed from the expected value. A bond length (or angle) with  $|Z| > 2$  is considered an outlier worth inspection. RMSZ is the root-mean-square of all Z scores of the bond lengths (or angles).

Mol	Type	Chain	Res	Link	Bond lengths			Bond angles		
					Counts	RMSZ	# Z  > 2	Counts	RMSZ	# Z  > 2
3	WP5	C	1000	-	25,25,25	2.57	7 (28%)	29,35,35	1.98	7 (24%)
2	FAD	D	998	-	58,58,58	1.14	4 (6%)	85,89,89	1.71	23 (27%)
6	MRD	A	1491	-	7,7,7	0.48	0	9,10,10	2.03	2 (22%)
7	MPD	D	1492	-	7,7,7	0.47	0	9,10,10	1.26	1 (11%)
2	FAD	B	998	-	58,58,58	1.22	6 (10%)	85,89,89	1.77	16 (18%)
3	WP5	A	1000	-	25,25,25	2.52	6 (24%)	29,35,35	1.67	4 (13%)
2	FAD	C	998	-	58,58,58	1.12	5 (8%)	85,89,89	1.83	20 (23%)
3	WP5	D	1000	-	25,25,25	2.45	5 (20%)	29,35,35	1.64	5 (17%)
6	MRD	A	1492	-	7,7,7	0.41	0	9,10,10	1.39	2 (22%)
7	MPD	D	1491	-	7,7,7	0.46	0	9,10,10	1.39	1 (11%)
2	FAD	A	998	-	58,58,58	1.20	7 (12%)	85,89,89	1.74	22 (25%)
3	WP5	B	1000	-	25,25,25	2.00	4 (16%)	29,35,35	1.86	8 (27%)

In the following table, the Chirals column lists the number of chiral outliers, the number of chiral centers analysed, the number of these observed in the model and the number defined in the Chemical Component Dictionary. Similar counts are reported in the Torsion and Rings columns. '-' means no outliers of that kind were identified.

Mol	Type	Chain	Res	Link	Chirals	Torsions	Rings
3	WP5	C	1000	-	-	4/10/26/26	0/3/3/3
2	FAD	D	998	-	-	3/34/50/50	0/6/6/6
6	MRD	A	1491	-	-	2/5/5/5	-
7	MPD	D	1492	-	-	3/5/5/5	-
2	FAD	B	998	-	-	10/34/50/50	0/6/6/6
3	WP5	A	1000	-	-	4/10/26/26	0/3/3/3
2	FAD	C	998	-	-	4/34/50/50	0/6/6/6
3	WP5	D	1000	-	-	4/10/26/26	0/3/3/3
6	MRD	A	1492	-	-	3/5/5/5	-
7	MPD	D	1491	-	-	0/5/5/5	-
2	FAD	A	998	-	-	6/34/50/50	0/6/6/6
3	WP5	B	1000	-	-	2/10/26/26	0/3/3/3

All (44) bond length outliers are listed below:

Mol	Chain	Res	Type	Atoms	Z	Observed(Å)	Ideal(Å)
3	D	1000	WP5	CAU-NAT	9.68	1.41	1.29
3	C	1000	WP5	CAU-NAT	9.45	1.41	1.29
3	A	1000	WP5	CAU-NAT	8.78	1.40	1.29
3	B	1000	WP5	CAU-NAT	7.92	1.39	1.29
3	A	1000	WP5	CAK-N	4.51	1.50	1.48
3	C	1000	WP5	CA-N	4.33	1.50	1.45
3	D	1000	WP5	CA-N	4.22	1.50	1.45
3	A	1000	WP5	CA-N	4.20	1.50	1.45
2	B	998	FAD	C4X-N5	3.70	1.38	1.30
2	C	998	FAD	C4X-N5	3.57	1.38	1.30
2	A	998	FAD	C4X-N5	3.48	1.38	1.30
2	D	998	FAD	C4X-N5	3.43	1.38	1.30
3	A	1000	WP5	CAU-N	3.41	1.44	1.35
3	D	1000	WP5	CAU-N	3.37	1.44	1.35
3	C	1000	WP5	CAW-CAU	3.34	1.54	1.49
3	C	1000	WP5	CAJ-CAK	3.34	1.55	1.51
3	D	1000	WP5	CAK-N	3.28	1.50	1.48
3	C	1000	WP5	CAE-CAK	3.21	1.57	1.52
3	A	1000	WP5	CAW-CAU	3.18	1.54	1.49
2	B	998	FAD	C2A-N3A	3.15	1.39	1.33
2	C	998	FAD	C10-N1	3.12	1.39	1.33
2	B	998	FAD	C2A-N1A	2.77	1.38	1.33
2	D	998	FAD	C8A-N7A	2.77	1.37	1.31
3	B	1000	WP5	CAU-N	2.76	1.43	1.35
2	A	998	FAD	C2A-N1A	2.74	1.38	1.33
2	A	998	FAD	C9-C8	2.66	1.43	1.39
3	B	1000	WP5	CAW-CAU	2.63	1.53	1.49
2	D	998	FAD	C10-N1	2.51	1.38	1.33
3	C	1000	WP5	CAU-N	2.47	1.42	1.35
3	B	1000	WP5	CA-N	2.47	1.48	1.45
3	D	1000	WP5	CAW-CAU	2.43	1.53	1.49
2	A	998	FAD	C5'-C4'	2.42	1.55	1.51
2	A	998	FAD	C10-N1	2.24	1.37	1.33
2	B	998	FAD	C10-N1	2.24	1.37	1.33
2	C	998	FAD	C2A-N1A	2.24	1.37	1.33
3	A	1000	WP5	CAE-CAK	2.23	1.56	1.52
2	A	998	FAD	O4B-C4B	-2.19	1.40	1.45
2	B	998	FAD	C5A-N7A	-2.18	1.35	1.39
2	C	998	FAD	C1'-C2'	-2.17	1.49	1.52
2	A	998	FAD	C2A-N3A	2.13	1.37	1.33
2	B	998	FAD	O4B-C4B	-2.11	1.40	1.45
2	D	998	FAD	C2A-N1A	2.10	1.37	1.33
2	C	998	FAD	C4A-N3A	2.07	1.38	1.34

*Continued on next page...*

*Continued from previous page...*

Mol	Chain	Res	Type	Atoms	Z	Observed(Å)	Ideal(Å)
3	C	1000	WP5	CA-C	2.06	1.55	1.51

All (111) bond angle outliers are listed below:

Mol	Chain	Res	Type	Atoms	Z	Observed(°)	Ideal(°)
2	C	998	FAD	N3A-C2A-N1A	-7.47	117.27	128.58
3	C	1000	WP5	OAO-C-CA	6.33	122.61	110.30
2	B	998	FAD	N3A-C2A-N1A	-5.97	119.55	128.58
2	A	998	FAD	N3A-C2A-N1A	-5.30	120.55	128.58
3	A	1000	WP5	OAO-C-CA	5.16	120.34	110.30
3	C	1000	WP5	CAS-NAT-CAU	5.16	122.59	118.16
2	B	998	FAD	C5A-C4A-N3A	-5.10	119.70	126.72
2	D	998	FAD	N3A-C2A-N1A	-4.82	121.29	128.58
3	B	1000	WP5	CAS-NAT-CAU	4.71	122.20	118.16
2	B	998	FAD	C5A-N7A-C8A	4.44	110.43	103.45
2	C	998	FAD	N9A-C8A-N7A	-4.38	107.72	113.94
6	A	1491	MRD	CM-C2-C1	-4.37	100.84	110.63
2	D	998	FAD	C5A-C4A-N3A	-4.24	120.87	126.72
3	D	1000	WP5	CAE-CAK-N	-4.22	105.92	111.65
3	B	1000	WP5	OAO-C-CA	4.22	118.50	110.30
2	C	998	FAD	C5A-C4A-N3A	-4.14	121.02	126.72
2	C	998	FAD	C5A-N7A-C8A	4.03	109.79	103.45
3	D	1000	WP5	OAO-C-CA	4.01	118.11	110.30
2	B	998	FAD	N9A-C8A-N7A	-3.94	108.34	113.94
2	A	998	FAD	C5A-C4A-N3A	-3.94	121.30	126.72
2	A	998	FAD	C4X-C10-N10	3.92	122.10	116.48
2	C	998	FAD	C2A-N3A-C4A	3.79	121.09	111.83
2	B	998	FAD	C2A-N3A-C4A	3.77	121.03	111.83
3	D	1000	WP5	CAP-OAO-C	-3.75	104.06	116.07
2	C	998	FAD	C9A-C5X-N5	-3.63	118.61	122.45
2	A	998	FAD	N9A-C8A-N7A	-3.60	108.82	113.94
2	A	998	FAD	C4-C4X-N5	3.58	123.15	118.21
2	A	998	FAD	C10-C4X-N5	-3.48	117.71	124.81
3	A	1000	WP5	CAS-NAT-CAU	3.47	121.14	118.16
2	D	998	FAD	O2P-P-O3P	3.46	116.62	107.27
2	B	998	FAD	C4A-C5A-N7A	-3.38	106.71	110.58
2	C	998	FAD	C4X-C4-N3	3.37	121.83	113.25
2	B	998	FAD	O4-C4-C4X	-3.35	117.70	126.53
2	B	998	FAD	N3A-C4A-N9A	3.32	132.82	127.17
2	D	998	FAD	O3P-PA-O1A	3.28	120.56	110.70
2	A	998	FAD	C2A-N3A-C4A	3.22	119.70	111.83
2	C	998	FAD	N3A-C4A-N9A	3.21	132.63	127.17

*Continued on next page...*

*Continued from previous page...*

Mol	Chain	Res	Type	Atoms	Z	Observed(°)	Ideal(°)
2	A	998	FAD	O2B-C2B-C1B	-3.21	99.04	110.10
2	D	998	FAD	N9A-C8A-N7A	-3.17	109.44	113.94
2	C	998	FAD	C4-N3-C2	-3.17	120.02	125.64
3	C	1000	WP5	CAE-CAK-N	-3.15	107.38	111.65
2	B	998	FAD	C4X-C4-N3	3.11	121.18	113.25
2	B	998	FAD	C4-N3-C2	-3.11	120.12	125.64
3	B	1000	WP5	CAW-CAU-NAT	-3.08	115.40	119.32
2	D	998	FAD	C2A-N3A-C4A	3.07	119.34	111.83
2	C	998	FAD	O4-C4-C4X	-3.00	118.62	126.53
2	A	998	FAD	C5A-N7A-C8A	2.97	108.11	103.45
2	D	998	FAD	C4B-O4B-C1B	-2.90	103.06	109.47
2	A	998	FAD	O4-C4-N3	-2.89	114.67	120.11
2	C	998	FAD	O3P-P-O1P	-2.84	102.15	110.70
2	A	998	FAD	O2A-PA-O3P	2.83	114.92	107.27
3	B	1000	WP5	CAE-CAK-N	-2.83	107.81	111.65
2	D	998	FAD	O4B-C1B-N9A	2.80	113.46	108.09
3	B	1000	WP5	CAE-CAK-CAJ	-2.75	107.85	112.75
7	D	1492	MPD	O2-C2-C1	-2.69	99.62	107.99
3	B	1000	WP5	CAJ-CAS-NAT	-2.67	119.86	122.16
2	A	998	FAD	C4-N3-C2	-2.66	120.92	125.64
3	D	1000	WP5	CAS-NAT-CAU	2.65	120.43	118.16
2	C	998	FAD	C2A-N1A-C6A	2.64	123.06	118.73
2	D	998	FAD	C5A-N7A-C8A	2.63	107.59	103.45
2	D	998	FAD	C4X-C10-N10	2.58	120.17	116.48
2	D	998	FAD	C4X-C4-N3	2.58	119.81	113.25
2	A	998	FAD	C4A-C5A-N7A	-2.58	107.64	110.58
2	D	998	FAD	C4-N3-C2	-2.57	121.09	125.64
6	A	1491	MRD	C1-C2-C3	2.57	121.27	110.20
7	D	1491	MPD	CM-C2-C1	-2.54	104.93	110.63
2	A	998	FAD	O4B-C1B-N9A	2.51	112.91	108.09
2	D	998	FAD	C5A-C6A-N6A	-2.50	117.09	123.29
6	A	1492	MRD	O2-C2-CM	-2.41	100.47	107.99
2	A	998	FAD	C4X-C4-N3	2.39	119.33	113.25
2	D	998	FAD	N3A-C4A-N9A	2.38	131.22	127.17
2	B	998	FAD	O3P-P-O1P	-2.38	103.55	110.70
2	B	998	FAD	C4'-C3'-C2'	-2.35	109.65	113.57
2	C	998	FAD	C10-N1-C2	2.34	121.92	116.85
2	C	998	FAD	C5X-C9A-N10	2.31	120.06	117.97
2	B	998	FAD	C4X-C10-N10	2.31	119.79	116.48
2	D	998	FAD	C4A-C5A-N7A	-2.31	107.94	110.58
2	B	998	FAD	C2B-C1B-N9A	2.29	119.00	113.30
2	C	998	FAD	O2A-PA-O3P	2.29	113.46	107.27

*Continued on next page...*

Continued from previous page...

Mol	Chain	Res	Type	Atoms	Z	Observed(°)	Ideal(°)
2	C	998	FAD	C4X-C10-N1	-2.29	118.98	124.59
2	D	998	FAD	O2'-C2'-C3'	-2.28	103.90	109.25
2	B	998	FAD	O3B-C3B-C4B	-2.28	104.53	111.08
2	D	998	FAD	C10-C4X-N5	-2.27	120.17	124.81
2	D	998	FAD	O4B-C4B-C5B	2.26	116.56	109.33
2	A	998	FAD	C8M-C8-C9	2.25	123.54	119.57
3	A	1000	WP5	CAE-CAK-CAJ	-2.24	108.75	112.75
2	C	998	FAD	C4A-N9A-C8A	2.23	108.08	105.74
2	D	998	FAD	C7M-C7-C6	2.22	123.49	119.57
3	B	1000	WP5	CAJ-CAK-N	2.22	113.62	110.39
3	C	1000	WP5	CAQ-CAH-CAI	-2.22	118.34	121.53
2	D	998	FAD	O4-C4-C4X	-2.21	120.69	126.53
2	D	998	FAD	N6A-C6A-N1A	-2.20	113.47	118.38
2	C	998	FAD	C4A-C5A-N7A	-2.20	108.07	110.58
2	B	998	FAD	C6A-C5A-C4A	2.20	120.18	117.18
3	C	1000	WP5	CAJ-CAS-NAT	-2.19	120.28	122.16
3	B	1000	WP5	CAD-CAE-CAF	2.18	121.01	118.30
6	A	1492	MRD	O2-C2-C1	-2.16	101.25	107.99
2	A	998	FAD	C10-N1-C2	2.16	121.52	116.85
2	A	998	FAD	C5A-C4A-N9A	2.15	108.16	105.81
2	D	998	FAD	C5X-C9A-N10	2.14	119.91	117.97
2	D	998	FAD	O5B-C5B-C4B	2.14	116.28	108.99
2	A	998	FAD	C4X-C10-N1	-2.12	119.39	124.59
2	A	998	FAD	C9A-C9-C8	2.12	123.48	119.22
2	A	998	FAD	C2B-C3B-C4B	2.10	106.66	102.61
3	A	1000	WP5	CAJ-CAK-N	2.09	113.43	110.39
2	C	998	FAD	O3B-C3B-C4B	-2.05	105.21	111.08
3	D	1000	WP5	CAJ-CAK-N	2.04	113.35	110.39
3	C	1000	WP5	CAJ-CAK-N	2.04	113.35	110.39
2	A	998	FAD	C6A-C5A-C4A	2.03	119.95	117.18
2	C	998	FAD	C4X-C10-N10	2.03	119.38	116.48
3	C	1000	WP5	CAJ-CAI-CAH	2.02	122.55	119.83

There are no chirality outliers.

All (45) torsion outliers are listed below:

Mol	Chain	Res	Type	Atoms
2	B	998	FAD	C5'-O5'-P-O1P
2	B	998	FAD	C5'-O5'-P-O2P
2	B	998	FAD	C5'-O5'-P-O3P
2	C	998	FAD	PA-O3P-P-O5'
2	D	998	FAD	C3'-C4'-C5'-O5'

Continued on next page...

*Continued from previous page...*

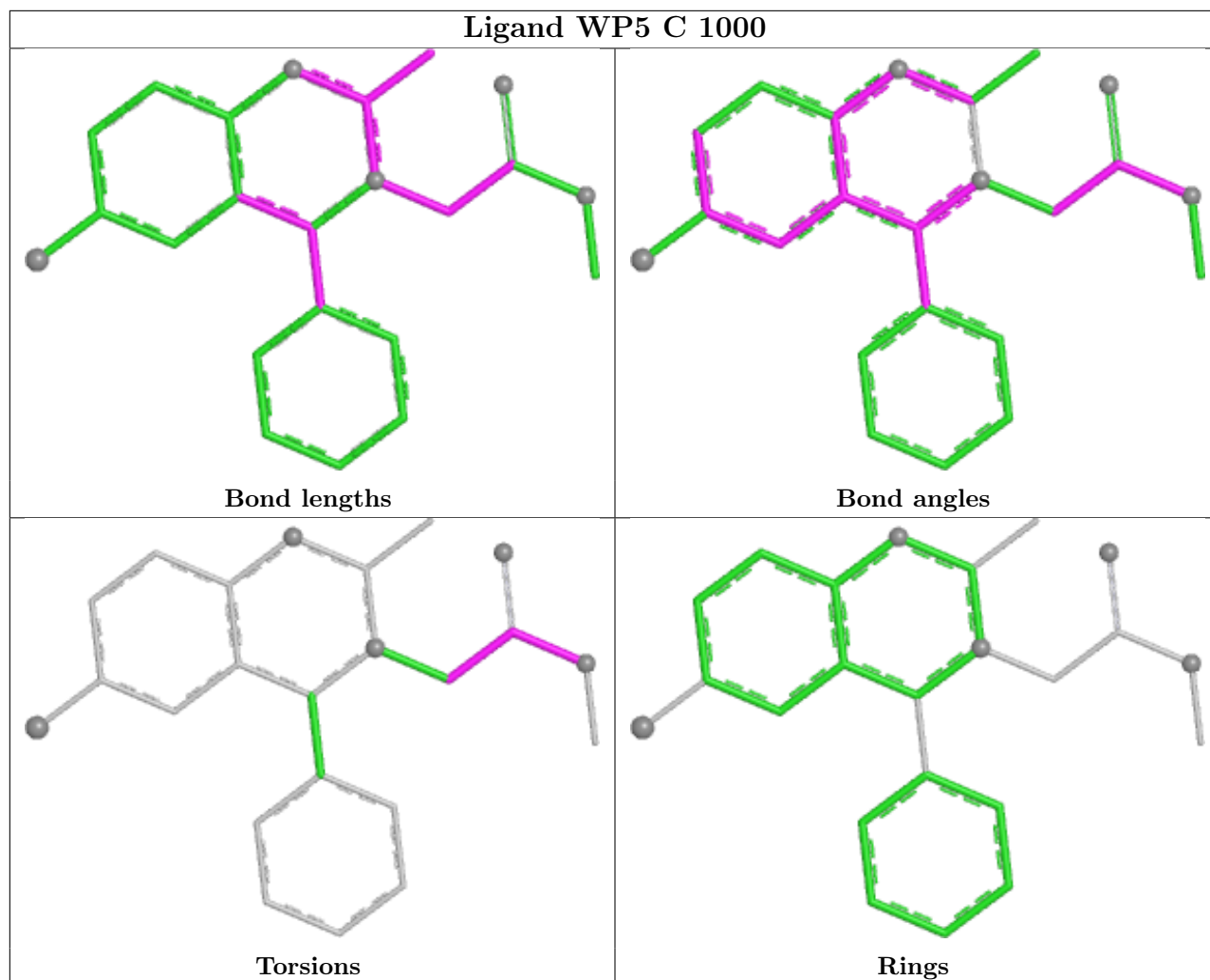
Mol	Chain	Res	Type	Atoms
2	D	998	FAD	O4'-C4'-C5'-O5'
3	A	1000	WP5	CA-C-OAO-CAP
3	B	1000	WP5	CA-C-OAO-CAP
3	C	1000	WP5	CA-C-OAO-CAP
3	D	1000	WP5	CA-C-OAO-CAP
6	A	1492	MRD	C2-C3-C4-C5
7	D	1492	MPD	CM-C2-C3-C4
3	C	1000	WP5	O-C-OAO-CAP
3	A	1000	WP5	O-C-OAO-CAP
3	B	1000	WP5	O-C-OAO-CAP
3	D	1000	WP5	O-C-CA-N
3	A	1000	WP5	OAO-C-CA-N
3	A	1000	WP5	O-C-CA-N
3	D	1000	WP5	OAO-C-CA-N
3	C	1000	WP5	OAO-C-CA-N
3	D	1000	WP5	O-C-OAO-CAP
2	A	998	FAD	C3B-C4B-C5B-O5B
2	A	998	FAD	PA-O3P-P-O5'
2	B	998	FAD	PA-O3P-P-O5'
3	C	1000	WP5	O-C-CA-N
2	A	998	FAD	O4B-C4B-C5B-O5B
7	D	1492	MPD	O2-C2-C3-C4
6	A	1492	MRD	C1-C2-C3-C4
6	A	1492	MRD	CM-C2-C3-C4
7	D	1492	MPD	C1-C2-C3-C4
2	B	998	FAD	C5B-O5B-PA-O1A
2	B	998	FAD	C5B-O5B-PA-O2A
2	B	998	FAD	C5B-O5B-PA-O3P
6	A	1491	MRD	C2-C3-C4-C5
2	A	998	FAD	P-O3P-PA-O2A
2	B	998	FAD	O4B-C4B-C5B-O5B
2	A	998	FAD	P-O3P-PA-O1A
2	D	998	FAD	P-O3P-PA-O2A
6	A	1491	MRD	C2-C3-C4-O4
2	B	998	FAD	O4'-C4'-C5'-O5'
2	A	998	FAD	PA-O3P-P-O2P
2	B	998	FAD	PA-O3P-P-O1P
2	C	998	FAD	PA-O3P-P-O1P
2	C	998	FAD	PA-O3P-P-O2P
2	C	998	FAD	O4B-C4B-C5B-O5B

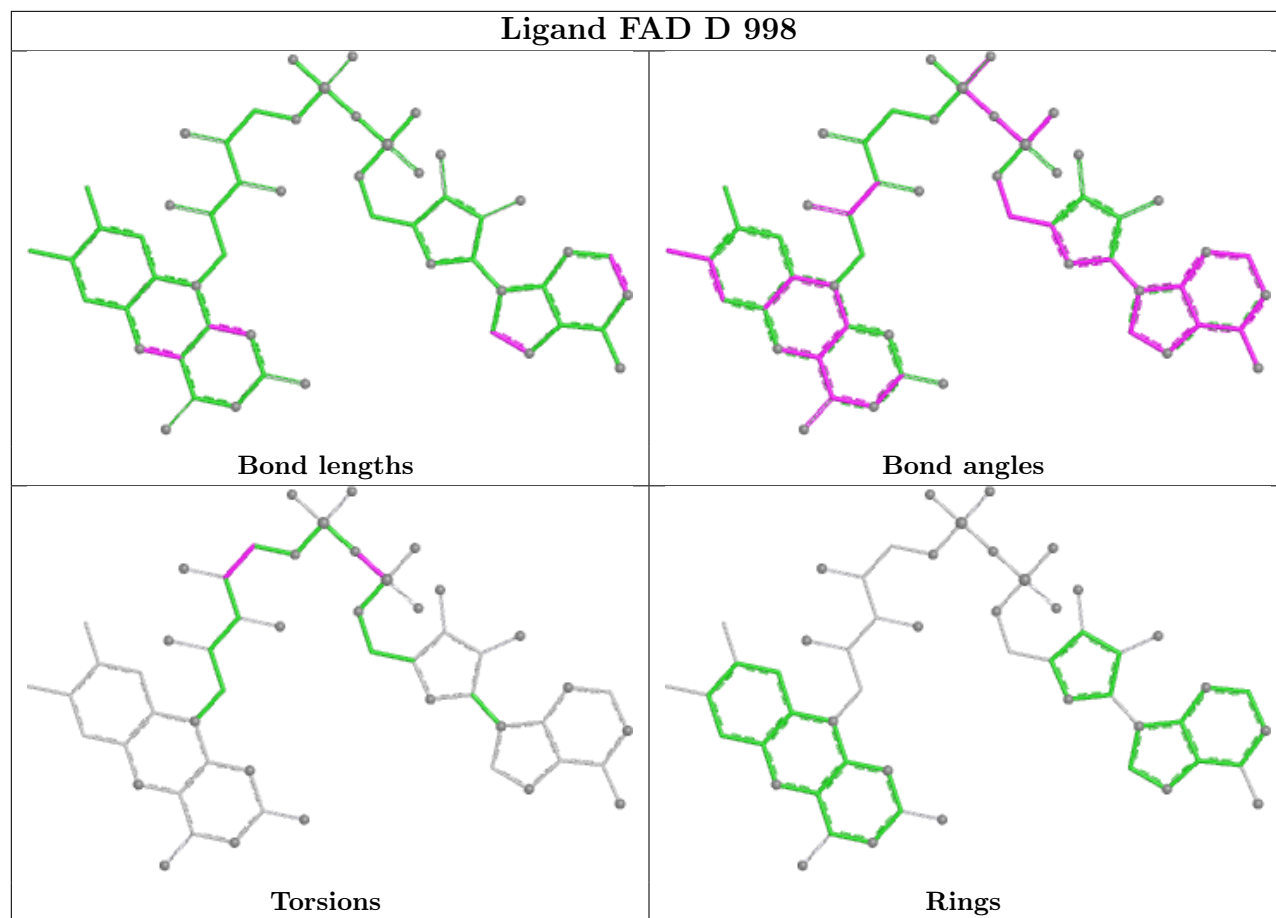
There are no ring outliers.

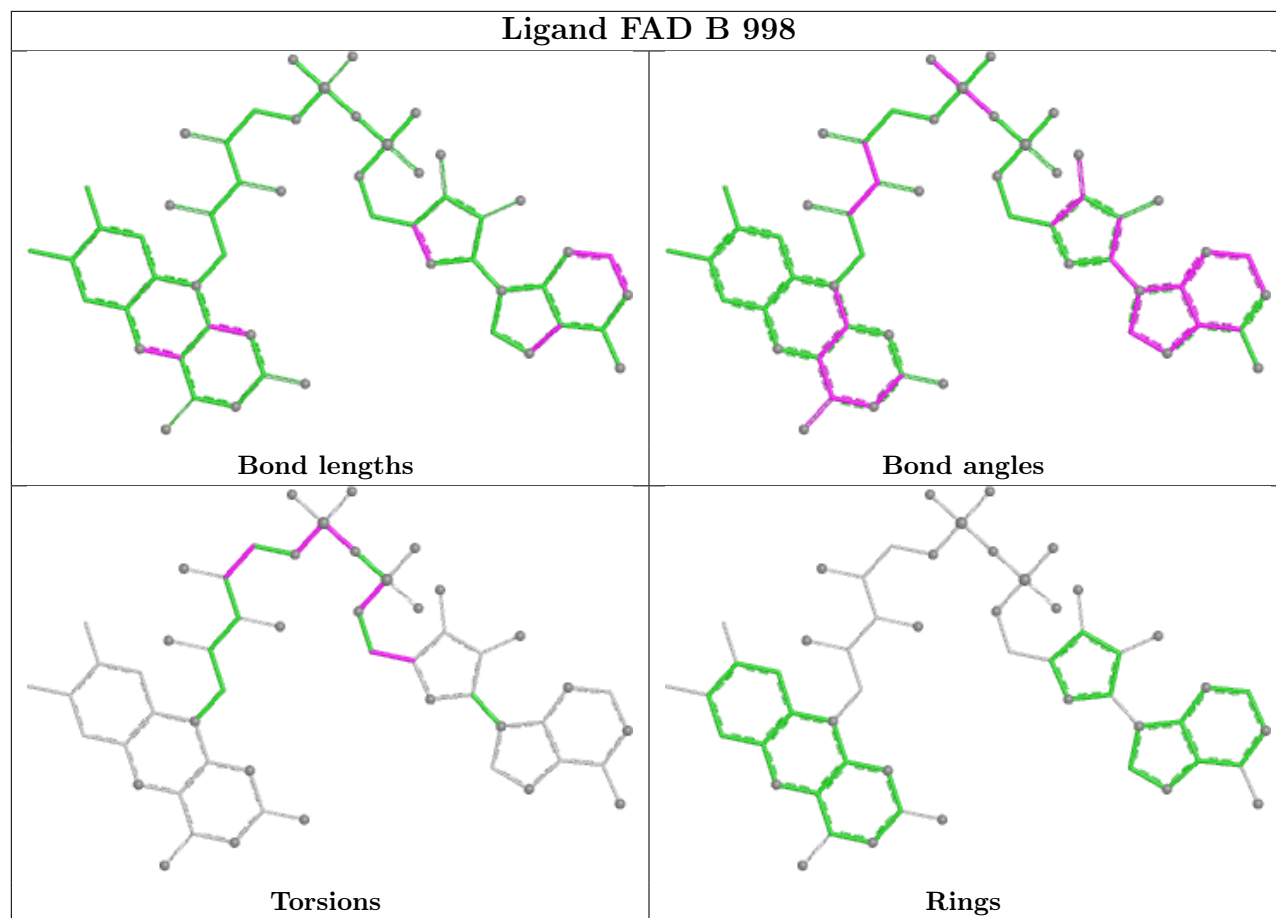
9 monomers are involved in 50 short contacts:

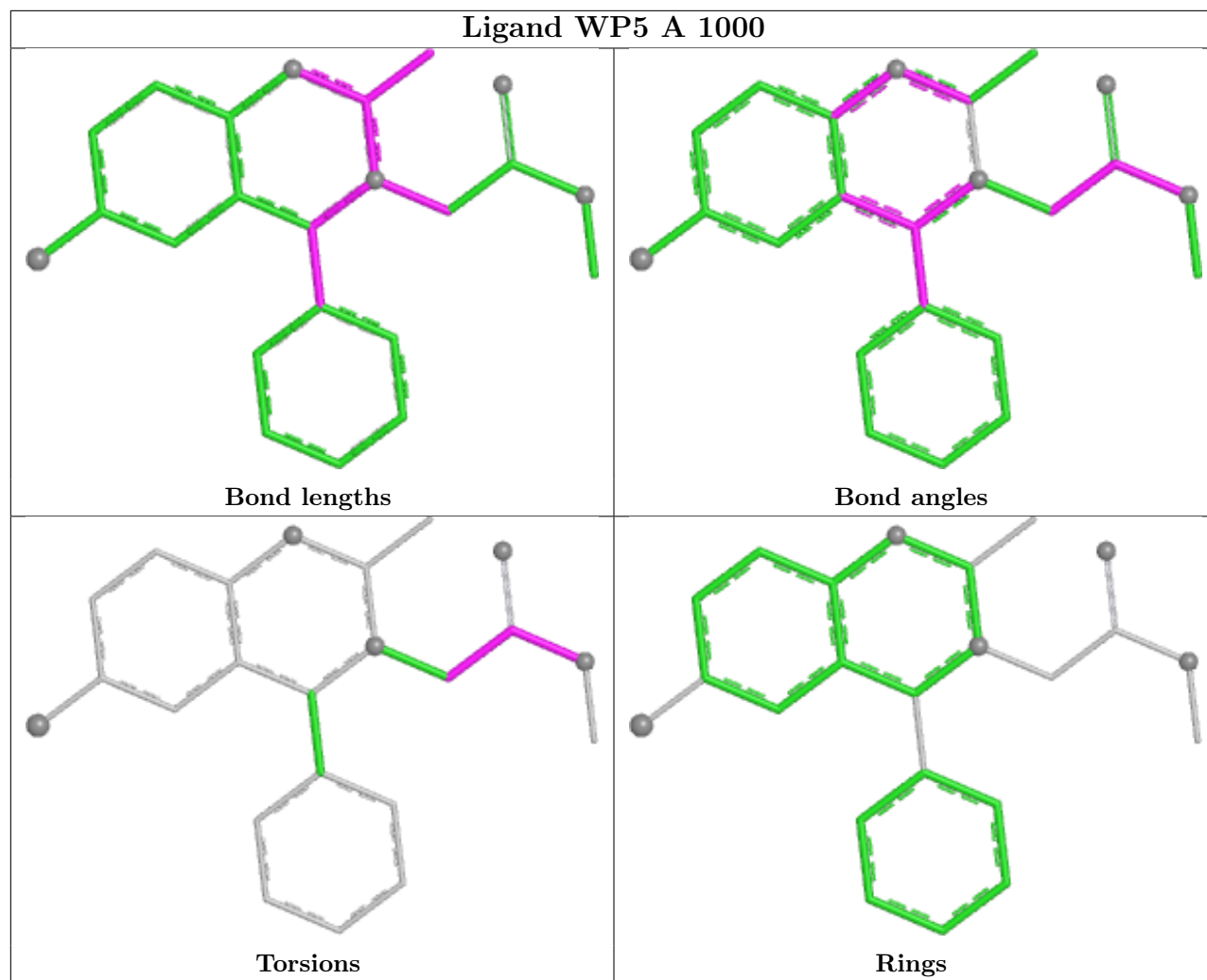
Mol	Chain	Res	Type	Clashes	Symm-Clashes
3	C	1000	WP5	2	0
2	D	998	FAD	4	0
6	A	1491	MRD	9	0
7	D	1492	MPD	6	0
2	B	998	FAD	2	0
3	A	1000	WP5	2	0
3	D	1000	WP5	1	0
7	D	1491	MPD	20	0
3	B	1000	WP5	4	0

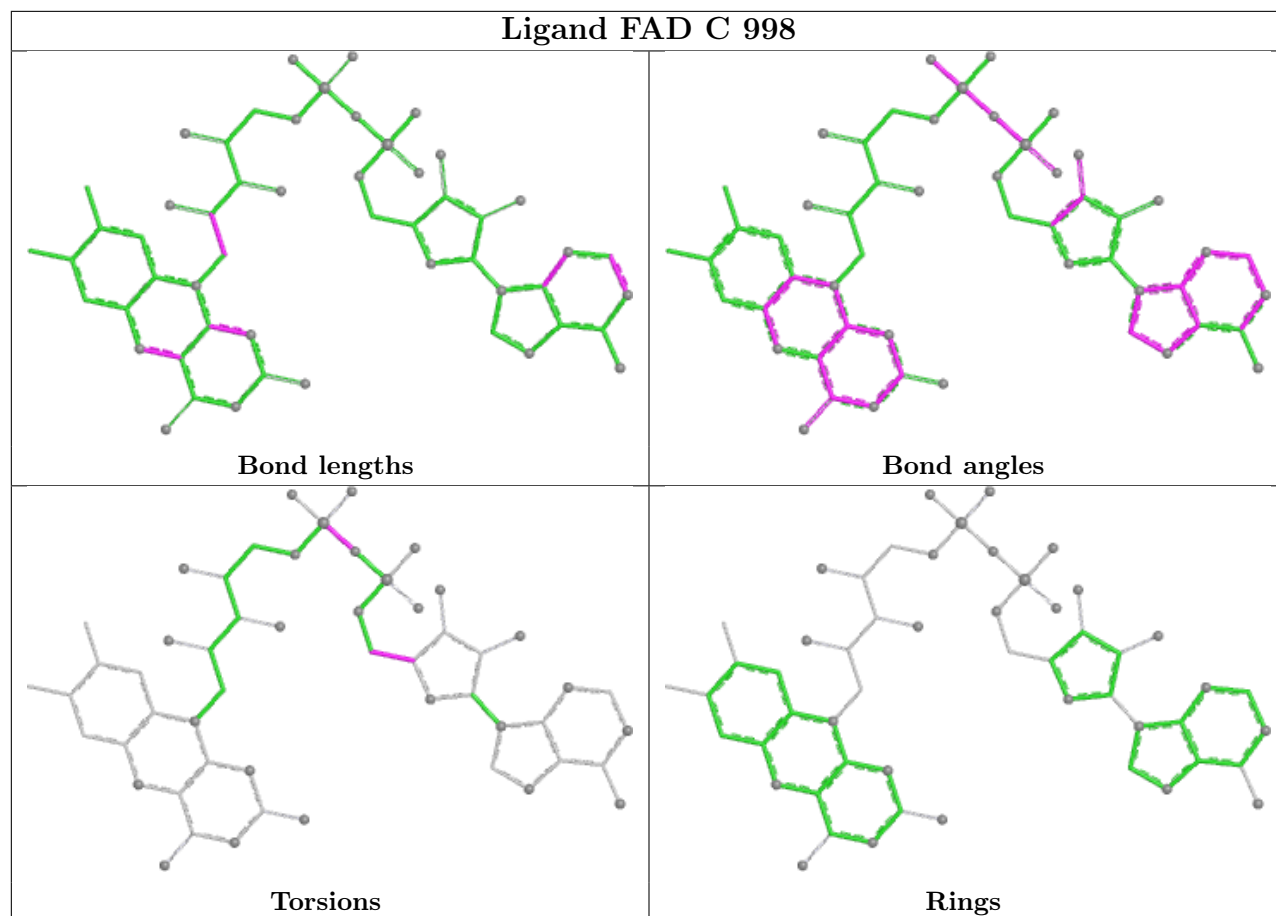
The following is a two-dimensional graphical depiction of Mogul quality analysis of bond lengths, bond angles, torsion angles, and ring geometry for all instances of the Ligand of Interest. In addition, ligands with molecular weight > 250 and outliers as shown on the validation Tables will also be included. For torsion angles, if less than 5% of the Mogul distribution of torsion angles is within 10 degrees of the torsion angle in question, then that torsion angle is considered an outlier. Any bond that is central to one or more torsion angles identified as an outlier by Mogul will be highlighted in the graph. For rings, the root-mean-square deviation (RMSD) between the ring in question and similar rings identified by Mogul is calculated over all ring torsion angles. If the average RMSD is greater than 60 degrees and the minimal RMSD between the ring in question and any Mogul-identified rings is also greater than 60 degrees, then that ring is considered an outlier. The outliers are highlighted in purple. The color gray indicates Mogul did not find sufficient equivalents in the CSD to analyse the geometry.

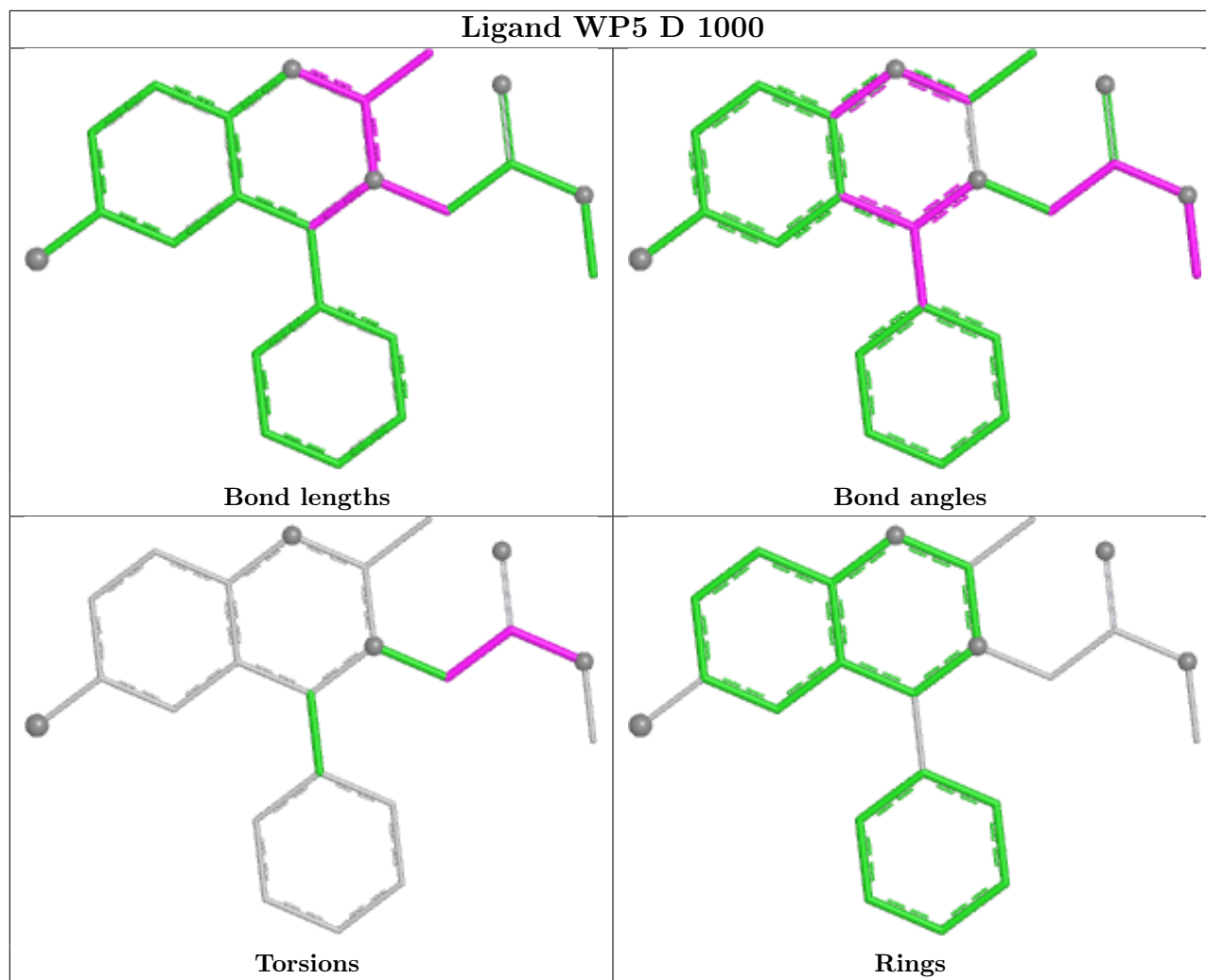


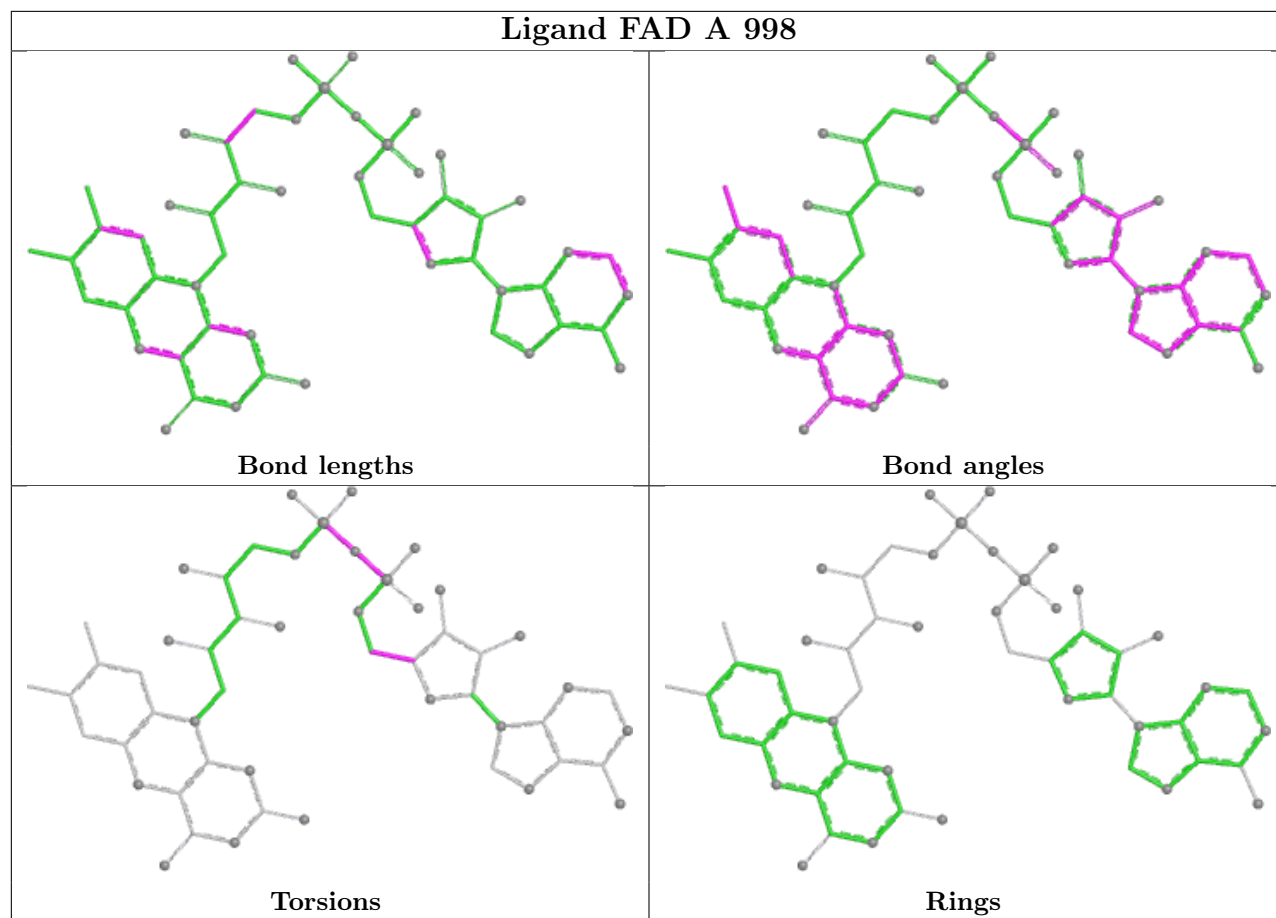


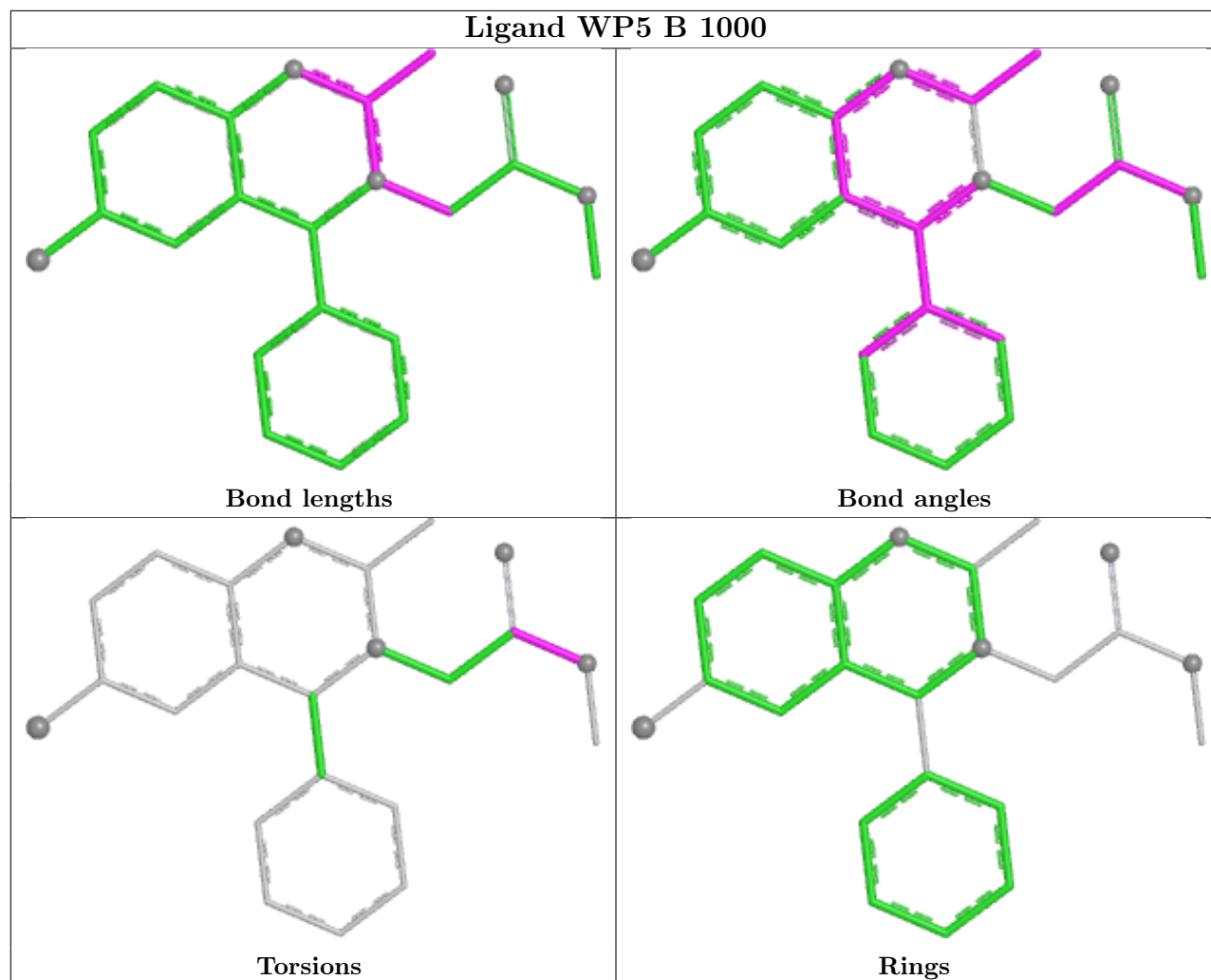












## 5.7 Other polymers [i](#)

There are no such residues in this entry.

## 5.8 Polymer linkage issues [i](#)

There are no chain breaks in this entry.

## 6 Fit of model and data [i](#)

### 6.1 Protein, DNA and RNA chains [i](#)

In the following table, the column labelled ‘#RSRZ> 2’ contains the number (and percentage) of RSRZ outliers, followed by percent RSRZ outliers for the chain as percentile scores relative to all X-ray entries and entries of similar resolution. The OWAB column contains the minimum, median, 95<sup>th</sup> percentile and maximum values of the occupancy-weighted average B-factor per residue. The column labelled ‘Q< 0.9’ lists the number of (and percentage) of residues with an average occupancy less than 0.9.

Mol	Chain	Analysed	<RSRZ>	#RSRZ>2	OWAB(Å <sup>2</sup> )	Q<0.9
1	A	488/495 (98%)	-0.79	1 (0%) 91   88	2, 11, 25, 38	2 (0%)
1	B	485/495 (97%)	-0.60	0 100   100	4, 16, 35, 41	5 (1%)
1	C	485/495 (97%)	-0.61	0 100   100	4, 16, 36, 49	2 (0%)
1	D	488/495 (98%)	-0.74	1 (0%) 91   88	3, 13, 27, 49	1 (0%)
All	All	1946/1980 (98%)	-0.68	2 (0%) 92   90	2, 14, 34, 49	10 (0%)

All (2) RSRZ outliers are listed below:

Mol	Chain	Res	Type	RSRZ
1	D	352	ASN	2.4
1	A	402	ASN	2.1

### 6.2 Non-standard residues in protein, DNA, RNA chains [i](#)

There are no non-standard protein/DNA/RNA residues in this entry.

### 6.3 Carbohydrates [i](#)

There are no oligosaccharides in this entry.

### 6.4 Ligands [i](#)

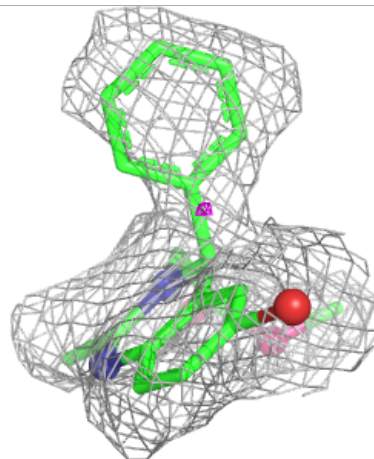
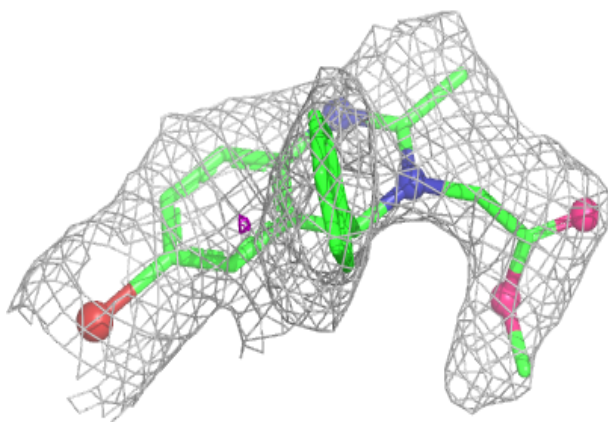
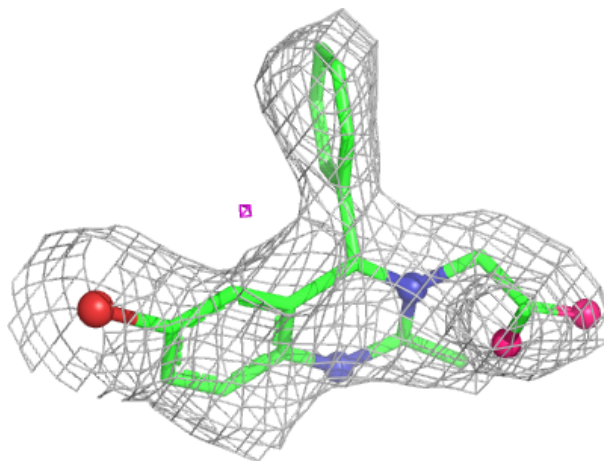
In the following table, the Atoms column lists the number of modelled atoms in the group and the number defined in the chemical component dictionary. The B-factors column lists the minimum, median, 95<sup>th</sup> percentile and maximum values of B factors of atoms in the group. The column labelled ‘Q< 0.9’ lists the number of atoms with occupancy less than 0.9.

Mol	Type	Chain	Res	Atoms	RSCC	RSR	B-factors( $\text{\AA}^2$ )	Q<0.9
7	MPD	D	1492	8/8	0.88	0.16	40,41,42,43	0
7	MPD	D	1491	8/8	0.89	0.22	33,36,40,41	0
5	NA	D	1490	1/1	0.89	0.26	46,46,46,46	0
6	MRD	A	1492	8/8	0.92	0.11	19,20,21,22	0
5	NA	C	1489	1/1	0.94	0.11	25,25,25,25	0
5	NA	D	1489	1/1	0.95	0.09	30,30,30,30	0
5	NA	B	1490	1/1	0.95	0.07	20,20,20,20	0
6	MRD	A	1491	8/8	0.95	0.12	11,15,22,22	0
3	WP5	C	1000	23/23	0.97	0.08	31,34,37,37	0
5	NA	A	1490	1/1	0.97	0.10	16,16,16,16	0
3	WP5	B	1000	23/23	0.98	0.07	22,24,27,31	0
2	FAD	A	998	53/53	0.98	0.05	2,6,10,13	0
3	WP5	D	1000	23/23	0.98	0.07	19,21,25,27	0
2	FAD	B	998	53/53	0.98	0.07	8,11,25,26	0
2	FAD	C	998	53/53	0.98	0.06	2,12,22,25	0
3	WP5	A	1000	23/23	0.98	0.07	14,20,23,25	0
2	FAD	D	998	53/53	0.99	0.05	4,8,14,15	0
5	NA	B	1489	1/1	0.99	0.06	11,11,11,11	0
4	CL	A	1488	1/1	0.99	0.03	5,5,5,5	0
4	CL	A	1489	1/1	0.99	0.06	7,7,7,7	0
4	CL	B	1487	1/1	0.99	0.04	9,9,9,9	0
4	CL	B	1488	1/1	0.99	0.03	8,8,8,8	0
4	CL	C	1487	1/1	0.99	0.03	7,7,7,7	0
4	CL	C	1488	1/1	0.99	0.04	21,21,21,21	0
4	CL	D	1487	1/1	0.99	0.07	5,5,5,5	0
4	CL	D	1488	1/1	0.99	0.03	13,13,13,13	0

The following is a graphical depiction of the model fit to experimental electron density of all instances of the Ligand of Interest. In addition, ligands with molecular weight > 250 and outliers as shown on the geometry validation Tables will also be included. Each fit is shown from different orientation to approximate a three-dimensional view.

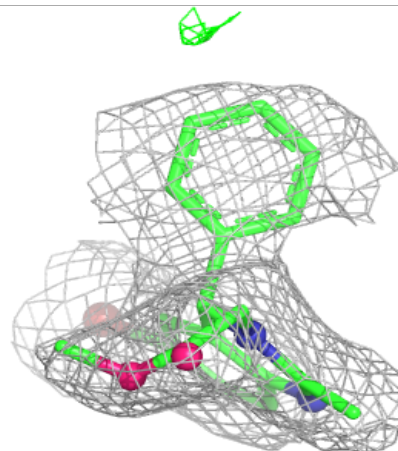
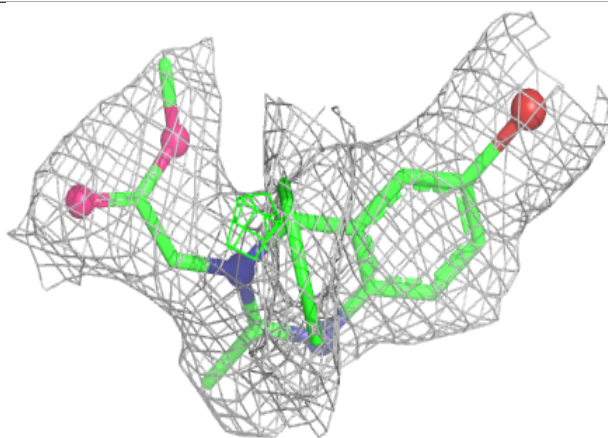
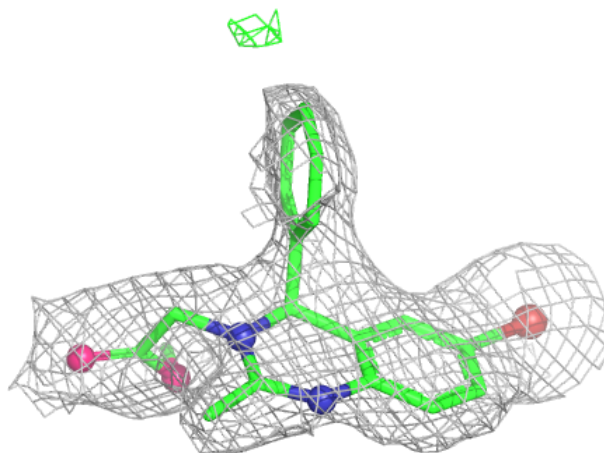
**Electron density around WP5 C 1000:**

$2mF_o-DF_c$  (at 0.7 rmsd) in gray  
 $mF_o-DF_c$  (at 3 rmsd) in purple (negative)  
and green (positive)



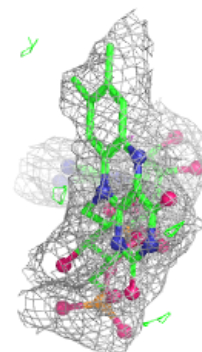
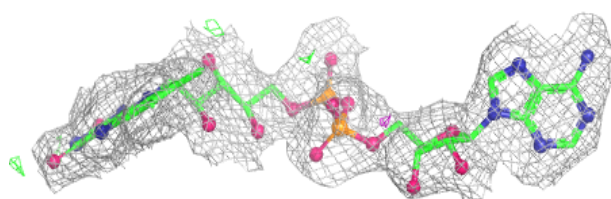
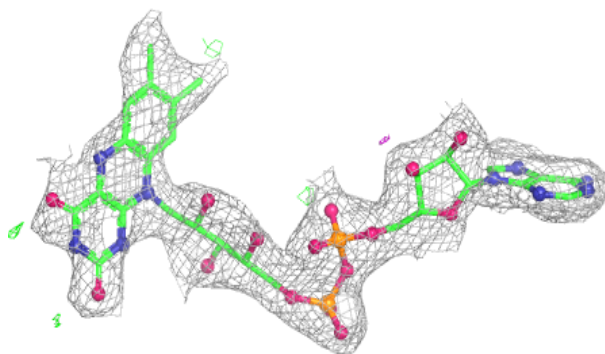
**Electron density around WP5 B 1000:**

$2mF_o-DF_c$  (at 0.7 rmsd) in gray  
 $mF_o-DF_c$  (at 3 rmsd) in purple (negative)  
and green (positive)

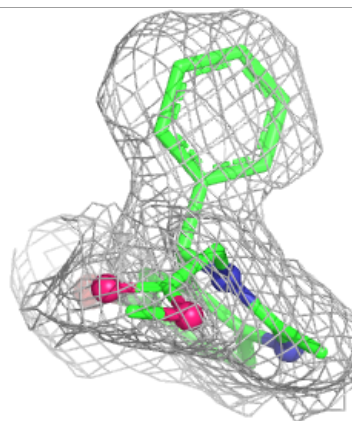
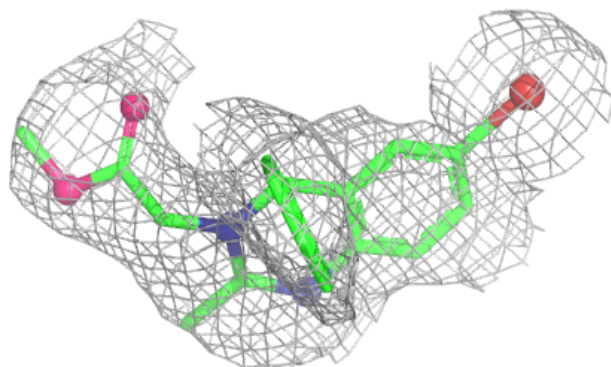
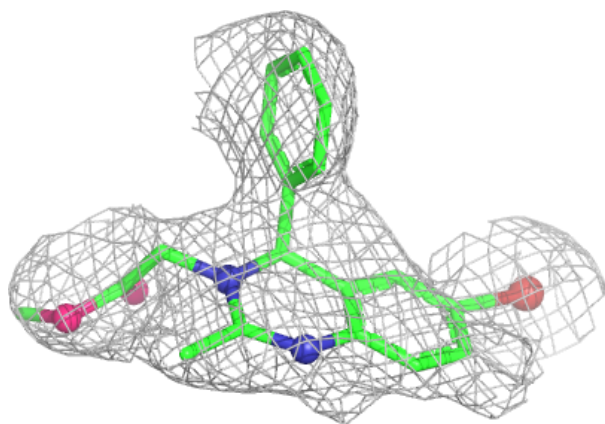


**Electron density around FAD A 998:**

$2mF_o-DF_c$  (at 0.7 rmsd) in gray  
 $mF_o-DF_c$  (at 3 rmsd) in purple (negative)  
and green (positive)

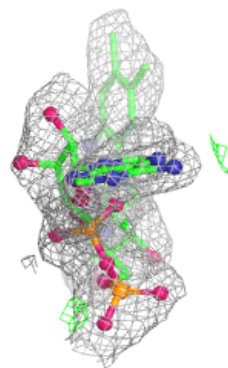
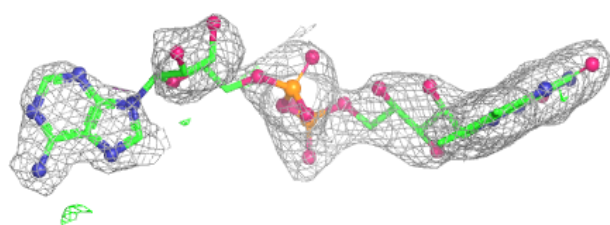
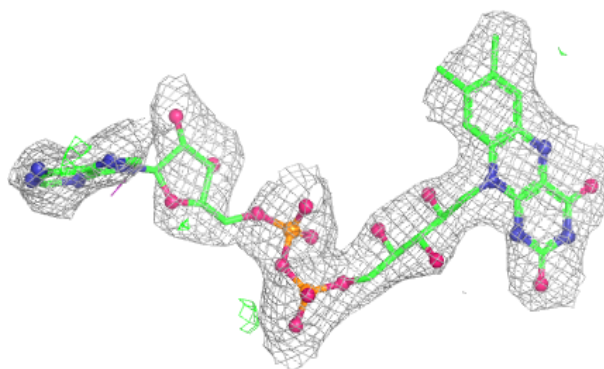
**Electron density around WP5 D 1000:**

$2mF_o-DF_c$  (at 0.7 rmsd) in gray  
 $mF_o-DF_c$  (at 3 rmsd) in purple (negative)  
and green (positive)

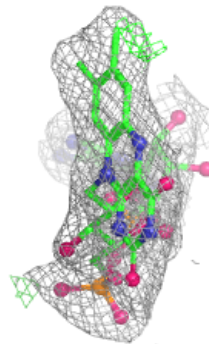
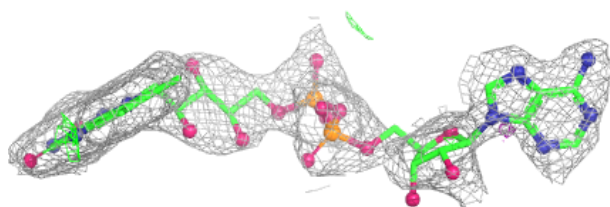
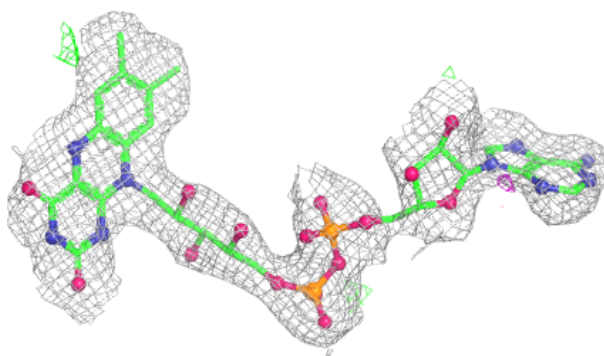


**Electron density around FAD B 998:**

$2mF_o-DF_c$  (at 0.7 rmsd) in gray  
 $mF_o-DF_c$  (at 3 rmsd) in purple (negative)  
and green (positive)

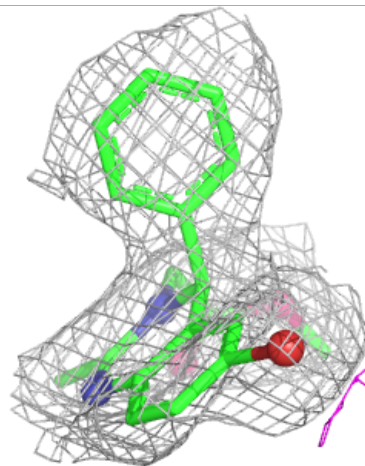
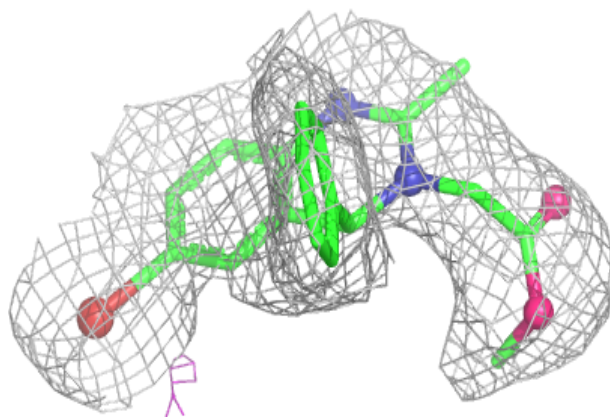
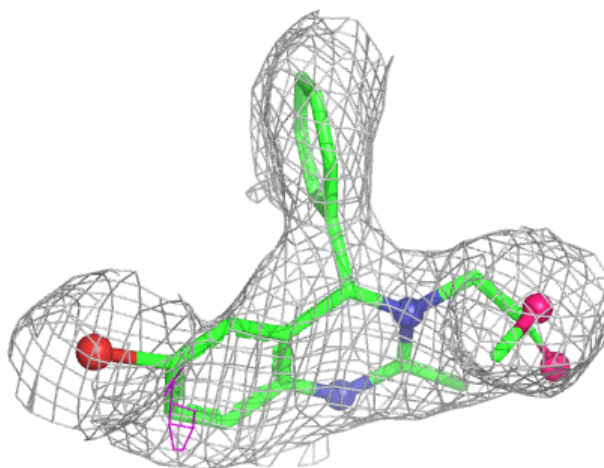
**Electron density around FAD C 998:**

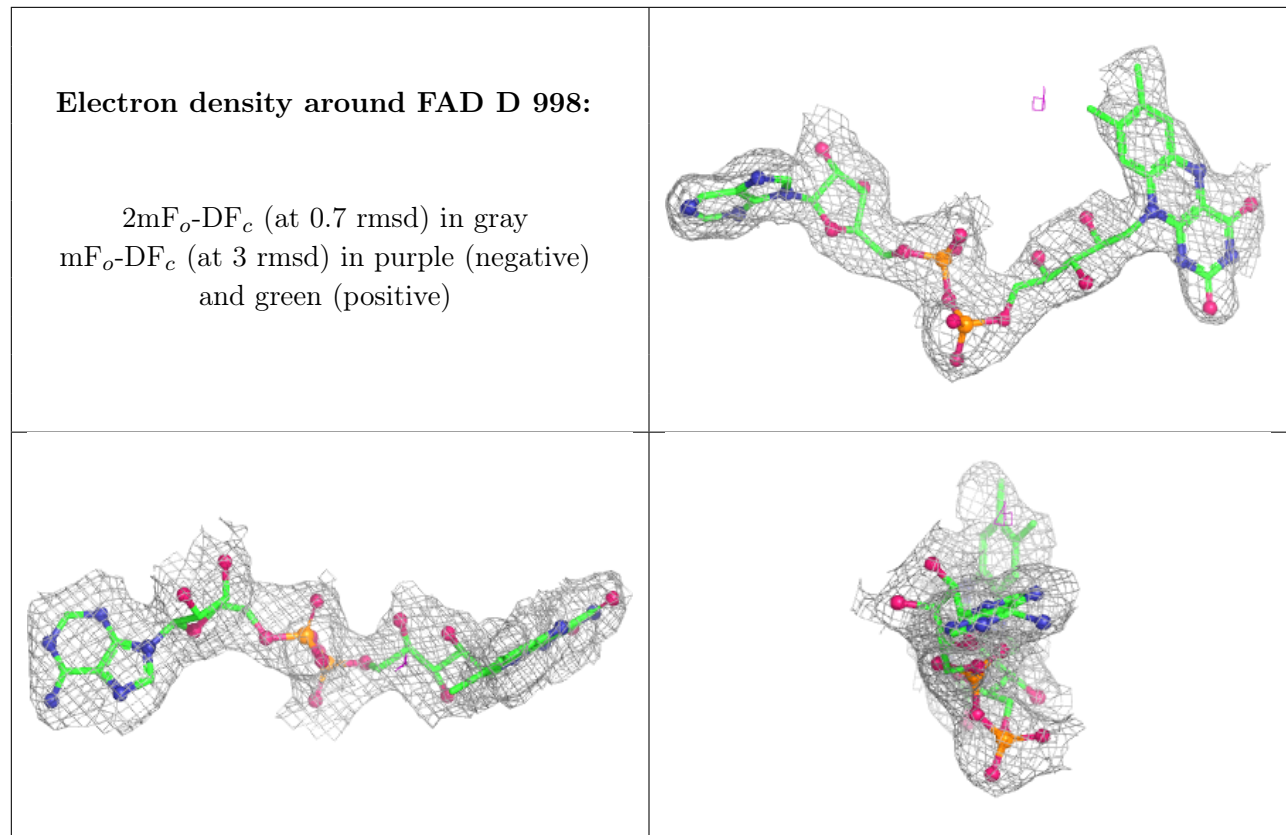
$2mF_o-DF_c$  (at 0.7 rmsd) in gray  
 $mF_o-DF_c$  (at 3 rmsd) in purple (negative)  
and green (positive)



**Electron density around WP5 A 1000:**

$2mF_o-DF_c$  (at 0.7 rmsd) in gray  
 $mF_o-DF_c$  (at 3 rmsd) in purple (negative)  
and green (positive)





## 6.5 Other polymers [i](#)

There are no such residues in this entry.