



# Full wwPDB X-ray Structure Validation Report ⓘ

Apr 26, 2026 – 01:16 AM EDT

PDB ID : 4WP9 / pdb\_00004wp9  
Title : Crystal structure of Adenylyl cyclase MA1120 from Mycobacterium Avium bound to 2'5'-DD-3'-ATP, Calcium and Magnesium ion  
Authors : Bharambe, N.G.; Barathy, D.V.; Suguna, K.  
Deposited on : 2014-10-17  
Resolution : 1.38 Å(reported)

This is a Full wwPDB X-ray Structure Validation Report for a publicly released PDB entry.

We welcome your comments at [validation@mail.wwpdb.org](mailto:validation@mail.wwpdb.org)

A user guide is available at

<https://www.wwpdb.org/validation/2017/XrayValidationReportHelp>

with specific help available everywhere you see the ⓘ symbol.

The types of validation reports are described at

<http://www.wwpdb.org/validation/2017/FAQs#types>.

---

The following versions of software and data (see [references ⓘ](#)) were used in the production of this report:

MolProbity : 4-5-2 with Phenix2.0  
Mogul : 2022.3.0, CSD as543be (2022)  
Xtrriage (Phenix) : 2.0  
EDS : 3.0  
Buster-report : wwPDB partial adaption of 1.1.7 (2018)  
Percentile statistics : 20250101.v01 (using entries in the PDB archive January 1st 2025)  
CCP4 : 9.0.010 (Gargrove)  
Density-Fitness : 1.0.12  
Ideal geometry (proteins) : Engh & Huber (2001)  
Ideal geometry (DNA, RNA) : Parkinson et al. (1996)  
Validation Pipeline (wwPDB-VP) : 2.49

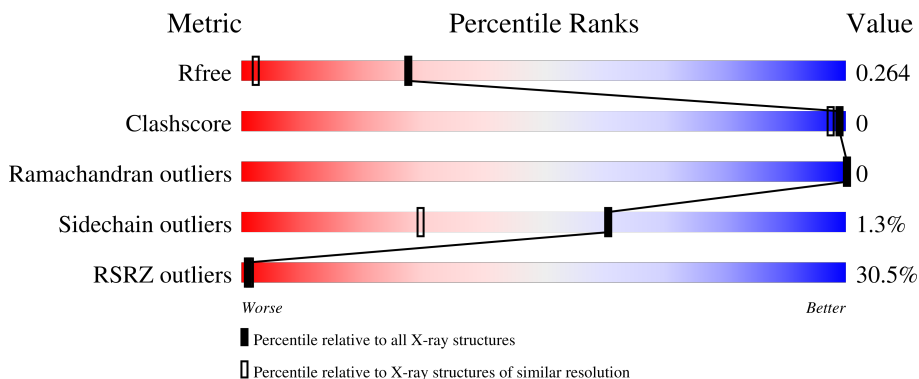
# 1 Overall quality at a glance

The following experimental techniques were used to determine the structure:

*X-RAY DIFFRACTION*

The reported resolution of this entry is 1.38 Å.

Percentile scores (ranging between 0-100) for global validation metrics of the entry are shown in the following graphic. The table shows the number of entries on which the scores are based.



Metric	Whole archive (#Entries)	Similar resolution (#Entries, resolution range(Å))
$R_{free}$	180053	4403 (1.40-1.36)
Clashscore	190562	4528 (1.40-1.36)
Ramachandran outliers	187476	4459 (1.40-1.36)
Sidechain outliers	187428	4458 (1.40-1.36)
RSRZ outliers	180081	4399 (1.40-1.36)

The table below summarises the geometric issues observed across the polymeric chains and their fit to the electron density. The red, orange, yellow and green segments of the lower bar indicate the fraction of residues that contain outliers for  $\geq 3$ , 2, 1 and 0 types of geometric quality criteria respectively. A grey segment represents the fraction of residues that are not modelled. The numeric value for each fraction is indicated below the corresponding segment, with a dot representing fractions  $\leq 5\%$ . The upper red bar (where present) indicates the fraction of residues that have poor fit to the electron density. The numeric value is given above the bar.

Mol	Chain	Length	Quality of chain
1	A	177	
1	B	177	

The following table lists non-polymeric compounds, carbohydrate monomers and non-standard residues in protein, DNA, RNA chains that are outliers for geometric or electron-density-fit criteria:

Mol	Type	Chain	Res	Chirality	Geometry	Clashes	Electron density
2	MG	A	301	-	-	-	X

## 2 Entry composition [i](#)

There are 5 unique types of molecules in this entry. The entry contains 5315 atoms, of which 2413 are hydrogens and 0 are deuteriums.

In the tables below, the ZeroOcc column contains the number of atoms modelled with zero occupancy, the AltConf column contains the number of residues with at least one atom in alternate conformation and the Trace column contains the number of residues modelled with at most 2 atoms.

- Molecule 1 is a protein called Ma1120.

Mol	Chain	Residues	Atoms						ZeroOcc	AltConf	Trace
			Total	C	H	N	O	S			
1	A	165	2447	770	1217	225	229	6	0	3	0
1	B	160	2373	753	1172	216	226	6	0	10	0

There are 14 discrepancies between the modelled and reference sequences:

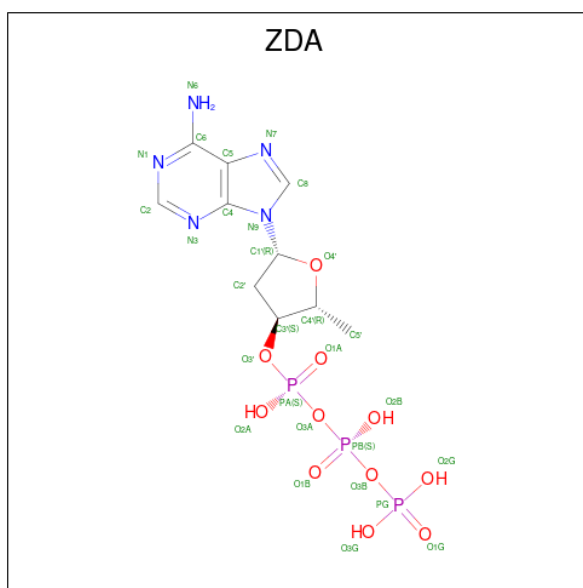
Chain	Residue	Modelled	Actual	Comment	Reference
A	47	PHE	-	expression tag	UNP Q5UFR5
A	48	GLN	-	expression tag	UNP Q5UFR5
A	49	GLY	-	expression tag	UNP Q5UFR5
A	50	ALA	-	expression tag	UNP Q5UFR5
A	51	MET	-	expression tag	UNP Q5UFR5
A	52	GLY	-	expression tag	UNP Q5UFR5
A	53	SER	-	expression tag	UNP Q5UFR5
B	47	PHE	-	expression tag	UNP Q5UFR5
B	48	GLN	-	expression tag	UNP Q5UFR5
B	49	GLY	-	expression tag	UNP Q5UFR5
B	50	ALA	-	expression tag	UNP Q5UFR5
B	51	MET	-	expression tag	UNP Q5UFR5
B	52	GLY	-	expression tag	UNP Q5UFR5
B	53	SER	-	expression tag	UNP Q5UFR5

- Molecule 2 is MAGNESIUM ION (CCD ID: MG) (formula: Mg).

Mol	Chain	Residues	Atoms		ZeroOcc	AltConf
2	A	2	Total	Mg	0	0
			2	2		
2	B	1	Total	Mg	0	0
			1	1		

- Molecule 3 is 2',5'-dideoxyadenosine 3'-(tetrahydrogen triphosphate) (CCD ID: ZDA)

(formula: C<sub>10</sub>H<sub>16</sub>N<sub>5</sub>O<sub>11</sub>P<sub>3</sub>).



Mol	Chain	Residues	Atoms					ZeroOcc	AltConf	
			Total	C	H	N	O			P
3	A	1	Total	C	H	N	O	P	0	0
			41	10	12	5	11	3		
3	B	1	Total	C	H	N	O	P	0	0
			41	10	12	5	11	3		

- Molecule 4 is CALCIUM ION (CCD ID: CA) (formula: Ca).

Mol	Chain	Residues	Atoms	ZeroOcc	AltConf
4	A	2	Total Ca 2 2	0	0
4	B	1	Total Ca 1 1	0	0

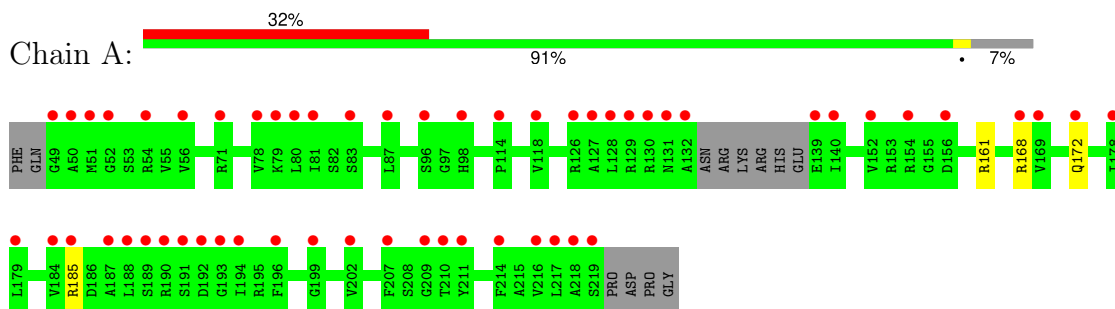
- Molecule 5 is water.

Mol	Chain	Residues	Atoms	ZeroOcc	AltConf
5	A	201	Total O 201 201	0	0
5	B	206	Total O 206 206	0	0

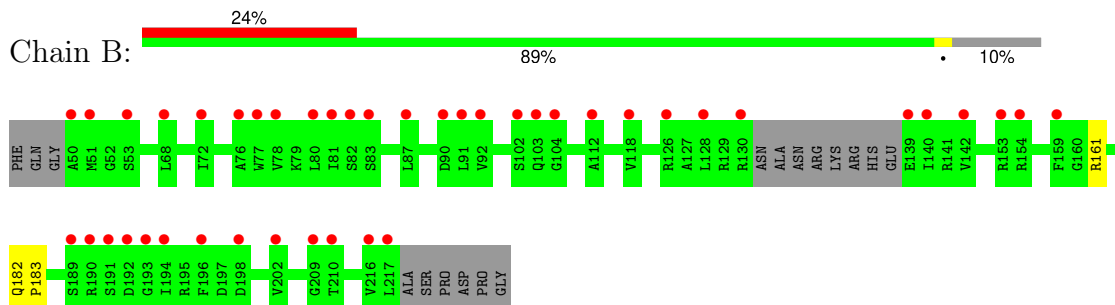
### 3 Residue-property plots [i](#)

These plots are drawn for all protein, RNA, DNA and oligosaccharide chains in the entry. The first graphic for a chain summarises the proportions of the various outlier classes displayed in the second graphic. The second graphic shows the sequence view annotated by issues in geometry and electron density. Residues are color-coded according to the number of geometric quality criteria for which they contain at least one outlier: green = 0, yellow = 1, orange = 2 and red = 3 or more. A red dot above a residue indicates a poor fit to the electron density ( $RSRZ > 2$ ). Stretches of 2 or more consecutive residues without any outlier are shown as a green connector. Residues present in the sample, but not in the model, are shown in grey.

- Molecule 1: Ma1120



- Molecule 1: Ma1120



## 4 Data and refinement statistics

Property	Value	Source
Space group	P 1 21 1	Depositor
Cell constants a, b, c, $\alpha$ , $\beta$ , $\gamma$	52.47Å 56.09Å 55.77Å 90.00° 110.72° 90.00°	Depositor
Resolution (Å)	26.95 – 1.38 26.95 – 1.38	Depositor EDS
% Data completeness (in resolution range)	97.1 (26.95-1.38) 98.2 (26.95-1.38)	Depositor EDS
$R_{merge}$	0.09	Depositor
$R_{sym}$	(Not available)	Depositor
$\langle I/\sigma(I) \rangle$ <sup>1</sup>	1.55 (at 1.38Å)	Xtrriage
Refinement program	PHENIX (phenix.refine: 1.9_1692)	Depositor
R, $R_{free}$	0.231 , 0.264 0.234 , 0.264	Depositor DCC
$R_{free}$ test set	3008 reflections (4.85%)	wwPDB-VP
Wilson B-factor (Å <sup>2</sup> )	14.3	Xtrriage
Anisotropy	0.243	Xtrriage
Bulk solvent $k_{sol}$ (e/Å <sup>3</sup> ), $B_{sol}$ (Å <sup>2</sup> )	0.39 , 37.4	EDS
L-test for twinning <sup>2</sup>	$\langle  L  \rangle = 0.50$ , $\langle L^2 \rangle = 0.34$	Xtrriage
Estimated twinning fraction	No twinning to report.	Xtrriage
$F_o, F_c$ correlation	0.91	EDS
Total number of atoms	5315	wwPDB-VP
Average B, all atoms (Å <sup>2</sup> )	26.0	wwPDB-VP

Xtrriage's analysis on translational NCS is as follows: *The largest off-origin peak in the Patterson function is 6.83% of the height of the origin peak. No significant pseudotranslation is detected.*

<sup>1</sup>Intensities estimated from amplitudes.

<sup>2</sup>Theoretical values of  $\langle |L| \rangle$ ,  $\langle L^2 \rangle$  for acentric reflections are 0.5, 0.333 respectively for untwinned datasets, and 0.375, 0.2 for perfectly twinned datasets.

## 5 Model quality [i](#)

### 5.1 Standard geometry [i](#)

Bond lengths and bond angles in the following residue types are not validated in this section: MG, CA, ZDA

The Z score for a bond length (or angle) is the number of standard deviations the observed value is removed from the expected value. A bond length (or angle) with  $|Z| > 5$  is considered an outlier worth inspection. RMSZ is the root-mean-square of all Z scores of the bond lengths (or angles).

Mol	Chain	Bond lengths		Bond angles	
		RMSZ	# Z  >5	RMSZ	# Z  >5
1	A	0.46	0/1252	0.67	0/1679
1	B	0.49	0/1247	0.70	0/1677
All	All	0.48	0/2499	0.68	0/3356

There are no bond length outliers.

There are no bond angle outliers.

There are no chirality outliers.

There are no planarity outliers.

### 5.2 Too-close contacts [i](#)

In the following table, the Non-H and H(model) columns list the number of non-hydrogen atoms and hydrogen atoms in the chain respectively. The H(added) column lists the number of hydrogen atoms added and optimized by MolProbity. The Clashes column lists the number of clashes within the asymmetric unit, whereas Symm-Clashes lists symmetry-related clashes.

Mol	Chain	Non-H	H(model)	H(added)	Clashes	Symm-Clashes
1	A	1230	1217	1218	1	0
1	B	1201	1172	1149	1	0
2	A	2	0	0	0	0
2	B	1	0	0	0	0
3	A	29	12	12	0	0
3	B	29	12	12	0	0
4	A	2	0	0	0	0
4	B	1	0	0	0	0
5	A	201	0	0	0	0
5	B	206	0	0	0	0
All	All	2902	2413	2391	2	0

The all-atom clashscore is defined as the number of clashes found per 1000 atoms (including hydrogen atoms). The all-atom clashscore for this structure is 0.

All (2) close contacts within the same asymmetric unit are listed below, sorted by their clash magnitude.

Atom-1	Atom-2	Interatomic distance (Å)	Clash overlap (Å)
1:A:168:ARG:O	1:A:172:GLN:HG2	2.20	0.42
1:B:182:GLN:HB3	1:B:183:PRO:HD3	2.03	0.41

There are no symmetry-related clashes.

## 5.3 Torsion angles [i](#)

### 5.3.1 Protein backbone [i](#)

In the following table, the Percentiles column shows the percent Ramachandran outliers of the chain as a percentile score with respect to all X-ray entries followed by that with respect to entries of similar resolution.

The Analysed column shows the number of residues for which the backbone conformation was analysed, and the total number of residues.

Mol	Chain	Analysed	Favoured	Allowed	Outliers	Percentiles	
1	A	164/177 (93%)	163 (99%)	1 (1%)	0	100	100
1	B	165/177 (93%)	164 (99%)	1 (1%)	0	100	100
All	All	329/354 (93%)	327 (99%)	2 (1%)	0	100	100

There are no Ramachandran outliers to report.

### 5.3.2 Protein sidechains [i](#)

In the following table, the Percentiles column shows the percent sidechain outliers of the chain as a percentile score with respect to all X-ray entries followed by that with respect to entries of similar resolution.

The Analysed column shows the number of residues for which the sidechain conformation was analysed, and the total number of residues.

Mol	Chain	Analysed	Rotameric	Outliers	Percentiles	
1	A	122/141 (86%)	120 (98%)	2 (2%)	55	22
1	B	121/141 (86%)	120 (99%)	1 (1%)	73	48

*Continued on next page...*

*Continued from previous page...*

Mol	Chain	Analysed	Rotameric	Outliers	Percentiles
All	All	243/282 (86%)	240 (99%)	3 (1%)	61 33

All (3) residues with a non-rotameric sidechain are listed below:

Mol	Chain	Res	Type
1	A	161	ARG
1	A	185	ARG
1	B	161	ARG

Sometimes sidechains can be flipped to improve hydrogen bonding and reduce clashes. All (2) such sidechains are listed below:

Mol	Chain	Res	Type
1	B	69	ASN
1	B	98	HIS

### 5.3.3 RNA [i](#)

There are no RNA molecules in this entry.

## 5.4 Non-standard residues in protein, DNA, RNA chains [i](#)

There are no non-standard protein/DNA/RNA residues in this entry.

## 5.5 Carbohydrates [i](#)

There are no oligosaccharides in this entry.

## 5.6 Ligand geometry [i](#)

Of 8 ligands modelled in this entry, 6 are monoatomic - leaving 2 for Mogul analysis.

In the following table, the Counts columns list the number of bonds (or angles) for which Mogul statistics could be retrieved, the number of bonds (or angles) that are observed in the model and the number of bonds (or angles) that are defined in the Chemical Component Dictionary. The Link column lists molecule types, if any, to which the group is linked. The Z score for a bond length (or angle) is the number of standard deviations the observed value is removed from the expected value. A bond length (or angle) with  $|Z| > 2$  is considered an outlier worth inspection. RMSZ is the root-mean-square of all Z scores of the bond lengths (or angles).

Mol	Type	Chain	Res	Link	Bond lengths			Bond angles		
					Counts	RMSZ	# Z  > 2	Counts	RMSZ	# Z  > 2
3	ZDA	A	303	2,4	30,31,31	3.92	8 (26%)	42,49,49	1.83	8 (19%)
3	ZDA	B	301	2,4	30,31,31	3.05	6 (20%)	42,49,49	1.50	7 (16%)

In the following table, the Chirals column lists the number of chiral outliers, the number of chiral centers analysed, the number of these observed in the model and the number defined in the Chemical Component Dictionary. Similar counts are reported in the Torsion and Rings columns. '-' means no outliers of that kind were identified.

Mol	Type	Chain	Res	Link	Chirals	Torsions	Rings
3	ZDA	A	303	2,4	-	6/21/33/33	0/3/3/3
3	ZDA	B	301	2,4	-	3/21/33/33	0/3/3/3

All (14) bond length outliers are listed below:

Mol	Chain	Res	Type	Atoms	Z	Observed(Å)	Ideal(Å)
3	A	303	ZDA	PB-O3A	14.03	1.74	1.59
3	B	301	ZDA	PB-O3A	9.48	1.69	1.59
3	A	303	ZDA	PB-O3B	-9.00	1.49	1.59
3	A	303	ZDA	O3'-C3'	-8.33	1.28	1.46
3	B	301	ZDA	O3'-C3'	-8.05	1.28	1.46
3	A	303	ZDA	PA-O3A	-7.11	1.51	1.59
3	B	301	ZDA	PB-O3B	-6.84	1.52	1.59
3	B	301	ZDA	PA-O3'	4.89	1.74	1.59
3	B	301	ZDA	PA-O3A	-4.88	1.54	1.59
3	A	303	ZDA	O4'-C1'	-4.21	1.33	1.42
3	A	303	ZDA	PA-O3'	2.83	1.67	1.59
3	A	303	ZDA	C8-N7	2.76	1.37	1.31
3	A	303	ZDA	C3'-C4'	2.45	1.57	1.53
3	B	301	ZDA	C3'-C4'	2.10	1.57	1.53

All (15) bond angle outliers are listed below:

Mol	Chain	Res	Type	Atoms	Z	Observed(°)	Ideal(°)
3	A	303	ZDA	O3'-PA-O1A	-5.64	91.77	109.81
3	A	303	ZDA	O3A-PB-O1B	-5.43	94.37	110.70
3	A	303	ZDA	O2A-PA-O3A	4.11	118.39	107.27
3	B	301	ZDA	C2'-C1'-N9	-3.20	107.12	114.63
3	B	301	ZDA	O2B-PB-O3A	-3.15	98.77	107.27
3	B	301	ZDA	O2A-PA-O3A	3.13	115.73	107.27
3	B	301	ZDA	C5-C4-N3	-2.86	122.78	126.72
3	A	303	ZDA	C5-C4-N3	-2.67	123.03	126.72

*Continued on next page...*

*Continued from previous page...*

Mol	Chain	Res	Type	Atoms	Z	Observed(°)	Ideal(°)
3	B	301	ZDA	O2A-PA-O3'	-2.60	96.11	106.70
3	B	301	ZDA	O2B-PB-O1B	2.46	123.87	112.44
3	A	303	ZDA	O2B-PB-O1B	2.45	123.84	112.44
3	A	303	ZDA	O4'-C1'-N9	2.35	112.18	107.96
3	A	303	ZDA	O2A-PA-O1A	2.21	122.73	112.44
3	B	301	ZDA	O3A-PA-O1A	2.15	117.18	110.70
3	A	303	ZDA	O2A-PA-O3'	-2.02	98.48	106.70

There are no chirality outliers.

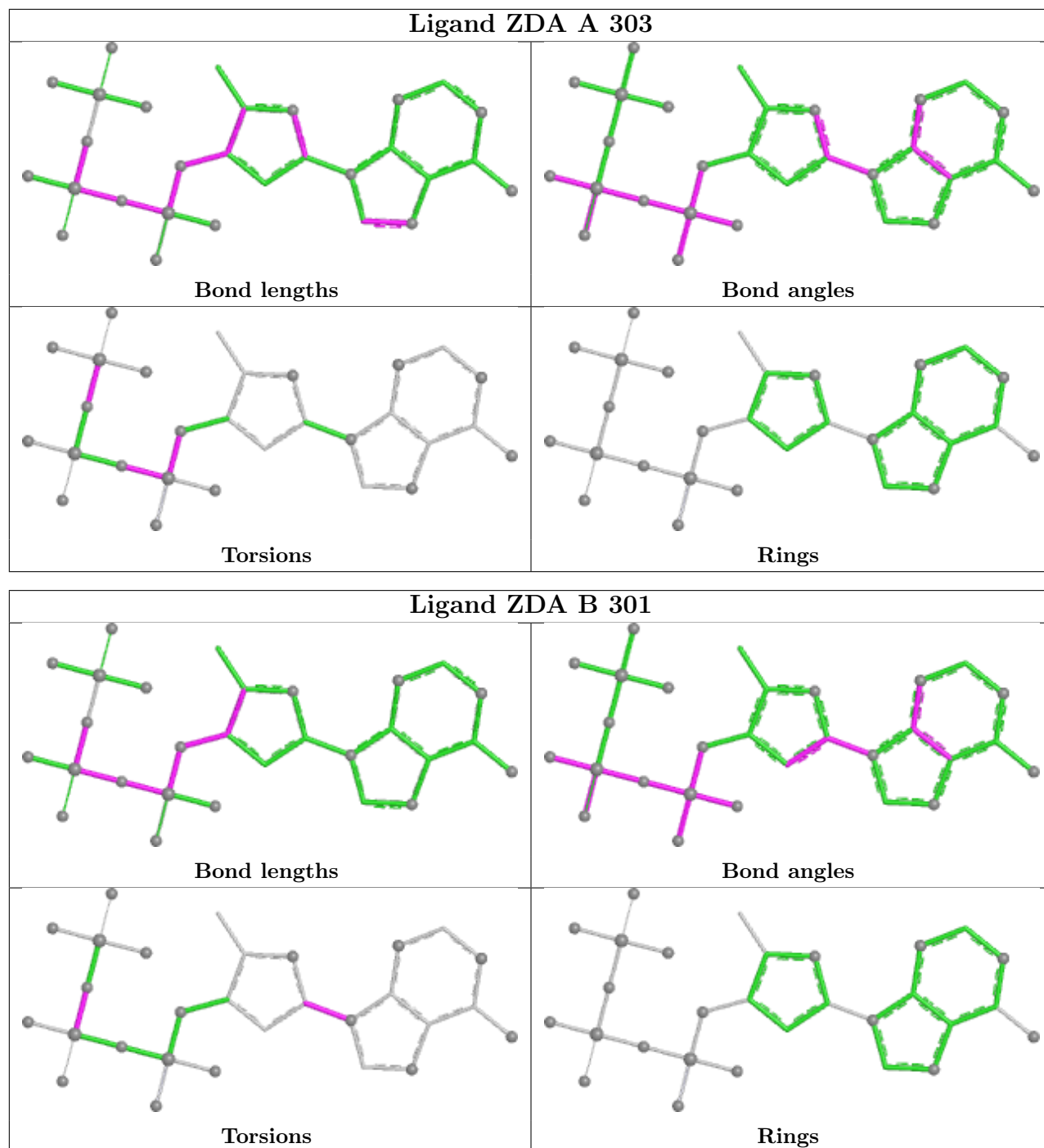
All (9) torsion outliers are listed below:

Mol	Chain	Res	Type	Atoms
3	A	303	ZDA	C3'-O3'-PA-O3A
3	A	303	ZDA	PB-O3B-PG-O3G
3	A	303	ZDA	C3'-O3'-PA-O1A
3	B	301	ZDA	PG-O3B-PB-O1B
3	A	303	ZDA	PB-O3B-PG-O1G
3	A	303	ZDA	C3'-O3'-PA-O2A
3	B	301	ZDA	PG-O3B-PB-O2B
3	B	301	ZDA	O4'-C1'-N9-C4
3	A	303	ZDA	PB-O3A-PA-O1A

There are no ring outliers.

No monomer is involved in short contacts.

The following is a two-dimensional graphical depiction of Mogul quality analysis of bond lengths, bond angles, torsion angles, and ring geometry for all instances of the Ligand of Interest. In addition, ligands with molecular weight > 250 and outliers as shown on the validation Tables will also be included. For torsion angles, if less than 5% of the Mogul distribution of torsion angles is within 10 degrees of the torsion angle in question, then that torsion angle is considered an outlier. Any bond that is central to one or more torsion angles identified as an outlier by Mogul will be highlighted in the graph. For rings, the root-mean-square deviation (RMSD) between the ring in question and similar rings identified by Mogul is calculated over all ring torsion angles. If the average RMSD is greater than 60 degrees and the minimal RMSD between the ring in question and any Mogul-identified rings is also greater than 60 degrees, then that ring is considered an outlier. The outliers are highlighted in purple. The color gray indicates Mogul did not find sufficient equivalents in the CSD to analyse the geometry.



## 5.7 Other polymers [\(i\)](#)

There are no such residues in this entry.

## 5.8 Polymer linkage issues [\(i\)](#)

There are no chain breaks in this entry.

## 6 Fit of model and data

### 6.1 Protein, DNA and RNA chains

In the following table, the column labelled ‘#RSRZ > 2’ contains the number (and percentage) of RSRZ outliers, followed by percent RSRZ outliers for the chain as percentile scores relative to all X-ray entries and entries of similar resolution. The OWAB column contains the minimum, median, 95<sup>th</sup> percentile and maximum values of the occupancy-weighted average B-factor per residue. The column labelled ‘Q < 0.9’ lists the number of (and percentage) of residues with an average occupancy less than 0.9.

Mol	Chain	Analysed	<RSRZ>	#RSRZ>2	OWAB(Å <sup>2</sup> )	Q<0.9
1	A	165/177 (93%)	1.87	56 (33%) <b>1</b> <b>1</b>	12, 25, 42, 51	3 (1%)
1	B	160/177 (90%)	1.62	43 (26%) <b>1</b> <b>2</b>	8, 23, 38, 43	7 (4%)
All	All	325/354 (91%)	1.75	99 (30%) <b>1</b> <b>1</b>	8, 24, 41, 51	10 (3%)

All (99) RSRZ outliers are listed below:

Mol	Chain	Res	Type	RSRZ
1	A	190	ARG	6.3
1	B	217	LEU	5.6
1	B	191	SER	5.6
1	A	193	GLY	5.2
1	A	191	SER	5.0
1	A	194	ILE	4.9
1	A	49	GLY	4.9
1	A	132	ALA	4.8
1	B	189	SER	4.7
1	B	190	ARG	4.7
1	A	50	ALA	4.7
1	A	218	ALA	4.7
1	A	219	SER	4.4
1	B	140	ILE	4.3
1	A	192	ASP	4.1
1	A	140	ILE	4.1
1	B	104	GLY	3.9
1	A	217	LEU	3.9
1	A	189	SER	3.8
1	A	131	ASN	3.7
1	B	193	GLY	3.6
1	B	81	ILE	3.6
1	B	202	VAL	3.5
1	B	130	ARG	3.4

*Continued on next page...*

*Continued from previous page...*

<b>Mol</b>	<b>Chain</b>	<b>Res</b>	<b>Type</b>	<b>RSRZ</b>
1	B	139	GLU	3.4
1	B	80	LEU	3.3
1	A	196	PHE	3.3
1	A	214	PHE	3.3
1	B	50	ALA	3.3
1	B	153	ARG	3.2
1	A	210	THR	3.2
1	A	139	GLU	3.1
1	B	198	ASP	3.1
1	B	209	GLY	3.1
1	B	72	ILE	3.0
1	A	168	ARG	3.0
1	A	202	VAL	2.9
1	B	78	VAL	2.9
1	A	130	ARG	2.9
1	A	52	GLY	2.9
1	B	192	ASP	2.9
1	A	54	ARG	2.9
1	B	196	PHE	2.8
1	A	178	ILE	2.8
1	A	51	MET	2.8
1	A	211	TYR	2.8
1	A	188	LEU	2.8
1	A	114	PRO	2.8
1	A	81	ILE	2.8
1	A	156	ASP	2.7
1	B	76	ALA	2.7
1	A	129	ARG	2.7
1	A	127	ALA	2.6
1	A	199	GLY	2.6
1	B	112	ALA	2.5
1	B	51	MET	2.5
1	A	83	SER	2.4
1	A	128	LEU	2.4
1	A	78	VAL	2.4
1	A	154	ARG	2.4
1	B	77	TRP	2.4
1	B	102	SER	2.4
1	B	159	PHE	2.4
1	B	194	ILE	2.3
1	A	80	LEU	2.3
1	A	184	VAL	2.3

*Continued on next page...*

*Continued from previous page...*

Mol	Chain	Res	Type	RSRZ
1	A	216	VAL	2.3
1	A	126	ARG	2.3
1	A	172	GLN	2.3
1	B	103	GLN	2.3
1	B	83[A]	SER	2.3
1	B	90	ASP	2.3
1	A	179	LEU	2.3
1	B	68	LEU	2.3
1	A	79	LYS	2.3
1	B	126	ARG	2.3
1	A	207	PHE	2.3
1	B	87	LEU	2.3
1	A	98	HIS	2.3
1	A	96	SER	2.2
1	A	209	GLY	2.2
1	A	71	ARG	2.2
1	B	216	VAL	2.2
1	B	154	ARG	2.2
1	A	152	VAL	2.2
1	B	91	LEU	2.1
1	B	142	VAL	2.1
1	B	92	VAL	2.1
1	B	53	SER	2.1
1	A	185	ARG	2.1
1	B	128	LEU	2.1
1	B	210[A]	THR	2.1
1	A	187	ALA	2.1
1	A	169	VAL	2.1
1	B	82[A]	SER	2.0
1	A	87	LEU	2.0
1	A	56	VAL	2.0
1	A	118	VAL	2.0
1	B	118	VAL	2.0

## 6.2 Non-standard residues in protein, DNA, RNA chains [i](#)

There are no non-standard protein/DNA/RNA residues in this entry.

## 6.3 Carbohydrates [i](#)

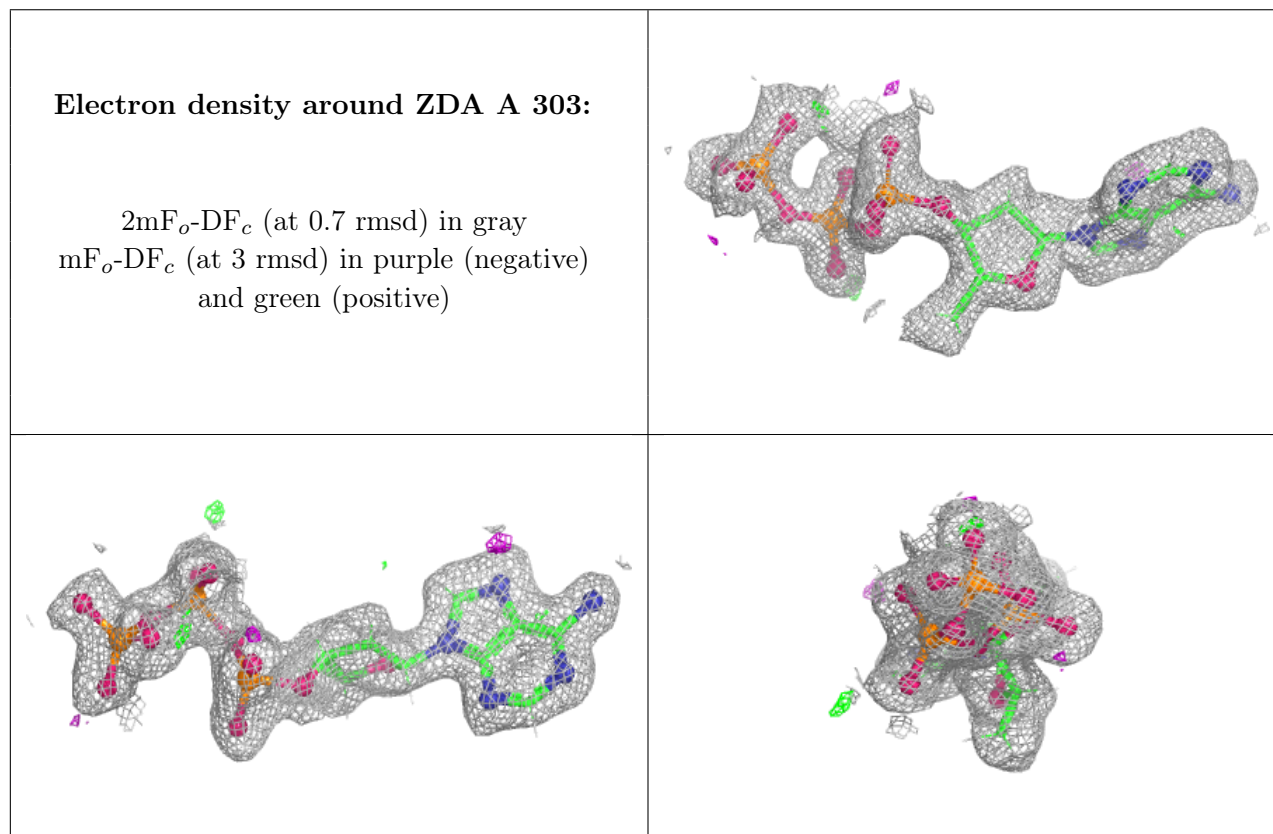
There are no oligosaccharides in this entry.

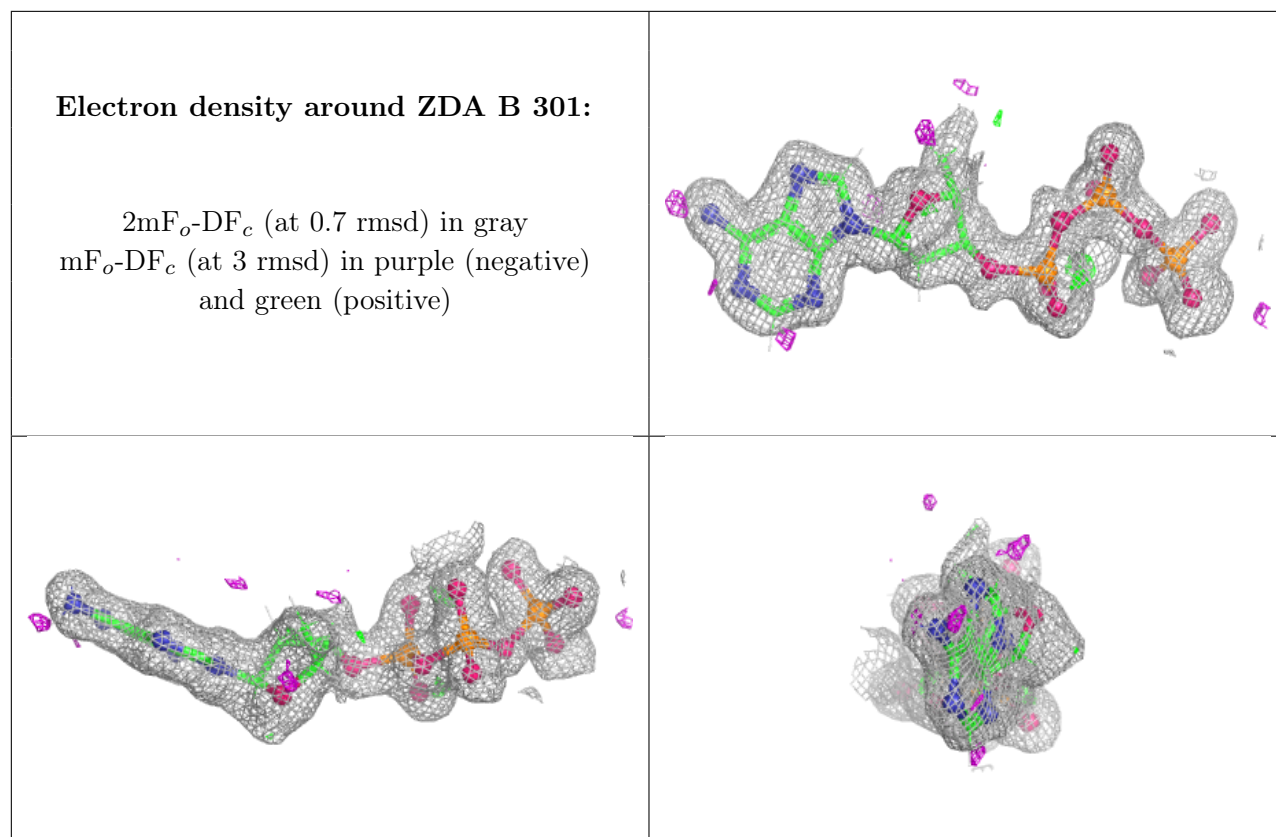
## 6.4 Ligands [i](#)

In the following table, the Atoms column lists the number of modelled atoms in the group and the number defined in the chemical component dictionary. The B-factors column lists the minimum, median, 95<sup>th</sup> percentile and maximum values of B factors of atoms in the group. The column labelled 'Q< 0.9' lists the number of atoms with occupancy less than 0.9.

Mol	Type	Chain	Res	Atoms	RSCC	RSR	B-factors(Å <sup>2</sup> )	Q<0.9
2	MG	A	301	1/1	-0.08	1.08	42,42,42,42	0
2	MG	A	302	1/1	0.93	0.11	27,27,27,27	0
2	MG	B	302	1/1	0.93	0.11	28,28,28,28	0
3	ZDA	A	303	29/29	0.94	0.10	13,19,24,26	0
3	ZDA	B	301	29/29	0.95	0.09	13,18,28,33	0
4	CA	A	305	1/1	0.96	0.14	25,25,25,25	0
4	CA	A	304	1/1	0.98	0.05	16,16,16,16	0
4	CA	B	303	1/1	1.00	0.03	15,15,15,15	0

The following is a graphical depiction of the model fit to experimental electron density of all instances of the Ligand of Interest. In addition, ligands with molecular weight > 250 and outliers as shown on the geometry validation Tables will also be included. Each fit is shown from different orientation to approximate a three-dimensional view.





## 6.5 Other polymers [i](#)

There are no such residues in this entry.