



# Full wwPDB X-ray Structure Validation Report ⓘ

Apr 25, 2026 – 05:27 PM EDT

PDB ID : 3WT0 / pdb\_00003wt0  
Title : Crystal Structure Analysis of Cell Division Protein  
Authors : Kato, K.; Ishido, T.; Matsui, T.; Yao, M.  
Deposited on : 2014-03-31  
Resolution : 2.00 Å(reported)

This is a Full wwPDB X-ray Structure Validation Report for a publicly released PDB entry.

We welcome your comments at [validation@mail.wwpdb.org](mailto:validation@mail.wwpdb.org)

A user guide is available at

<https://www.wwpdb.org/validation/2017/XrayValidationReportHelp>

with specific help available everywhere you see the ⓘ symbol.

The types of validation reports are described at

<http://www.wwpdb.org/validation/2017/FAQs#types>.

---

The following versions of software and data (see [references ⓘ](#)) were used in the production of this report:

MolProbity : 4-5-2 with Phenix2.0  
Mogul : 2022.3.0, CSD as543be (2022)  
Xtriage (Phenix) : 2.0  
EDS : 3.0  
Buster-report : wwPDB partial adaption of 1.1.7 (2018)  
Percentile statistics : 20250101.v01 (using entries in the PDB archive January 1st 2025)  
CCP4 : 9.0.010 (Gargrove)  
Density-Fitness : 1.0.12  
Ideal geometry (proteins) : Engh & Huber (2001)  
Ideal geometry (DNA, RNA) : Parkinson et al. (1996)  
Validation Pipeline (wwPDB-VP) : 2.49

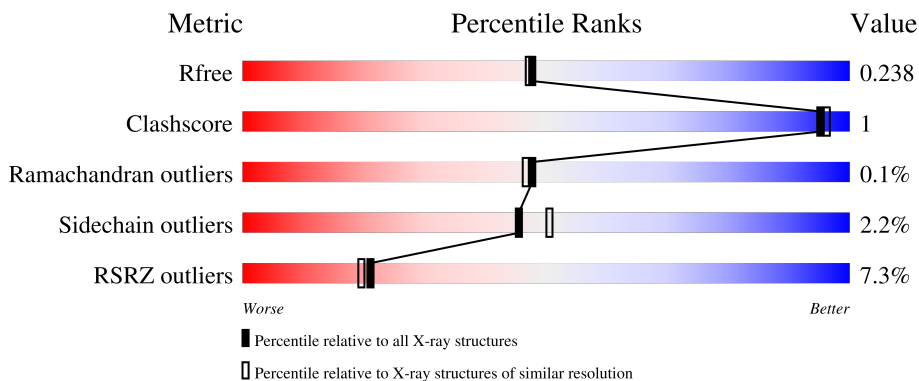
# 1 Overall quality at a glance

The following experimental techniques were used to determine the structure:

*X-RAY DIFFRACTION*

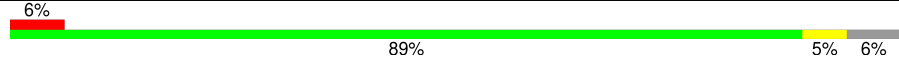
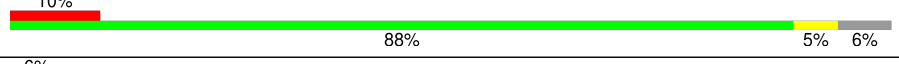
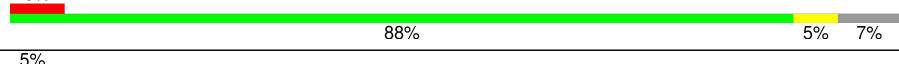
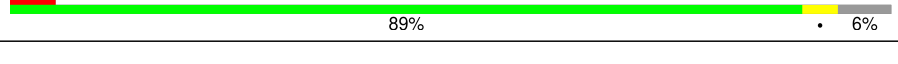
The reported resolution of this entry is 2.00 Å.

Percentile scores (ranging between 0-100) for global validation metrics of the entry are shown in the following graphic. The table shows the number of entries on which the scores are based.



Metric	Whole archive (#Entries)	Similar resolution (#Entries, resolution range(Å))
$R_{free}$	180053	10052 (2.00-2.00)
Clashscore	190562	11152 (2.00-2.00)
Ramachandran outliers	187476	11031 (2.00-2.00)
Sidechain outliers	187428	11029 (2.00-2.00)
RSRZ outliers	180081	10067 (2.00-2.00)

The table below summarises the geometric issues observed across the polymeric chains and their fit to the electron density. The red, orange, yellow and green segments of the lower bar indicate the fraction of residues that contain outliers for  $\geq 3$ , 2, 1 and 0 types of geometric quality criteria respectively. A grey segment represents the fraction of residues that are not modelled. The numeric value for each fraction is indicated below the corresponding segment, with a dot representing fractions  $\leq 5\%$ . The upper red bar (where present) indicates the fraction of residues that have poor fit to the electron density. The numeric value is given above the bar.

Mol	Chain	Length	Quality of chain
1	A	402	 6% 89% 5% 6%
1	B	402	 10% 88% 5% 6%
1	C	402	 6% 88% 5% 7%
1	D	402	 5% 89% 5% 6%

## 2 Entry composition i

There are 4 unique types of molecules in this entry. The entry contains 12594 atoms, of which 0 are hydrogens and 0 are deuteriums.

In the tables below, the ZeroOcc column contains the number of atoms modelled with zero occupancy, the AltConf column contains the number of residues with at least one atom in alternate conformation and the Trace column contains the number of residues modelled with at most 2 atoms.

- Molecule 1 is a protein called Cell division protein FtsA.

Mol	Chain	Residues	Atoms					ZeroOcc	AltConf	Trace
			Total	C	N	O	S			
1	A	376	Total 2927	C 1843	N 467	O 610	S 7	0	1	0
1	B	376	Total 2921	C 1840	N 466	O 608	S 7	0	0	0
1	C	374	Total 2903	C 1830	N 464	O 602	S 7	0	0	0
1	D	378	Total 2938	C 1853	N 468	O 610	S 7	0	0	0

There are 72 discrepancies between the modelled and reference sequences:

Chain	Residue	Modelled	Actual	Comment	Reference
A	-17	MET	-	expression tag	UNP Q8NX33
A	-16	ASN	-	expression tag	UNP Q8NX33
A	-15	HIS	-	expression tag	UNP Q8NX33
A	-14	HIS	-	expression tag	UNP Q8NX33
A	-13	HIS	-	expression tag	UNP Q8NX33
A	-12	HIS	-	expression tag	UNP Q8NX33
A	-11	HIS	-	expression tag	UNP Q8NX33
A	-10	HIS	-	expression tag	UNP Q8NX33
A	-9	GLU	-	expression tag	UNP Q8NX33
A	-8	ASN	-	expression tag	UNP Q8NX33
A	-7	LEU	-	expression tag	UNP Q8NX33
A	-6	TYR	-	expression tag	UNP Q8NX33
A	-5	PHE	-	expression tag	UNP Q8NX33
A	-4	GLN	-	expression tag	UNP Q8NX33
A	-3	GLY	-	expression tag	UNP Q8NX33
A	-2	GLY	-	expression tag	UNP Q8NX33
A	-1	ALA	-	expression tag	UNP Q8NX33
A	0	HIS	-	expression tag	UNP Q8NX33
B	-17	MET	-	expression tag	UNP Q8NX33
B	-16	ASN	-	expression tag	UNP Q8NX33
B	-15	HIS	-	expression tag	UNP Q8NX33

*Continued on next page...*

*Continued from previous page...*

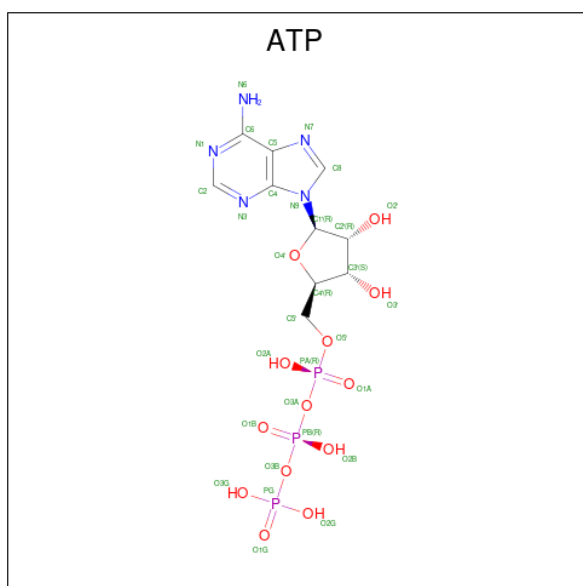
Chain	Residue	Modelled	Actual	Comment	Reference
B	-14	HIS	-	expression tag	UNP Q8NX33
B	-13	HIS	-	expression tag	UNP Q8NX33
B	-12	HIS	-	expression tag	UNP Q8NX33
B	-11	HIS	-	expression tag	UNP Q8NX33
B	-10	HIS	-	expression tag	UNP Q8NX33
B	-9	GLU	-	expression tag	UNP Q8NX33
B	-8	ASN	-	expression tag	UNP Q8NX33
B	-7	LEU	-	expression tag	UNP Q8NX33
B	-6	TYR	-	expression tag	UNP Q8NX33
B	-5	PHE	-	expression tag	UNP Q8NX33
B	-4	GLN	-	expression tag	UNP Q8NX33
B	-3	GLY	-	expression tag	UNP Q8NX33
B	-2	GLY	-	expression tag	UNP Q8NX33
B	-1	ALA	-	expression tag	UNP Q8NX33
B	0	HIS	-	expression tag	UNP Q8NX33
C	-17	MET	-	expression tag	UNP Q8NX33
C	-16	ASN	-	expression tag	UNP Q8NX33
C	-15	HIS	-	expression tag	UNP Q8NX33
C	-14	HIS	-	expression tag	UNP Q8NX33
C	-13	HIS	-	expression tag	UNP Q8NX33
C	-12	HIS	-	expression tag	UNP Q8NX33
C	-11	HIS	-	expression tag	UNP Q8NX33
C	-10	HIS	-	expression tag	UNP Q8NX33
C	-9	GLU	-	expression tag	UNP Q8NX33
C	-8	ASN	-	expression tag	UNP Q8NX33
C	-7	LEU	-	expression tag	UNP Q8NX33
C	-6	TYR	-	expression tag	UNP Q8NX33
C	-5	PHE	-	expression tag	UNP Q8NX33
C	-4	GLN	-	expression tag	UNP Q8NX33
C	-3	GLY	-	expression tag	UNP Q8NX33
C	-2	GLY	-	expression tag	UNP Q8NX33
C	-1	ALA	-	expression tag	UNP Q8NX33
C	0	HIS	-	expression tag	UNP Q8NX33
D	-17	MET	-	expression tag	UNP Q8NX33
D	-16	ASN	-	expression tag	UNP Q8NX33
D	-15	HIS	-	expression tag	UNP Q8NX33
D	-14	HIS	-	expression tag	UNP Q8NX33
D	-13	HIS	-	expression tag	UNP Q8NX33
D	-12	HIS	-	expression tag	UNP Q8NX33
D	-11	HIS	-	expression tag	UNP Q8NX33
D	-10	HIS	-	expression tag	UNP Q8NX33
D	-9	GLU	-	expression tag	UNP Q8NX33

*Continued on next page...*

Continued from previous page...

Chain	Residue	Modelled	Actual	Comment	Reference
D	-8	ASN	-	expression tag	UNP Q8NX33
D	-7	LEU	-	expression tag	UNP Q8NX33
D	-6	TYR	-	expression tag	UNP Q8NX33
D	-5	PHE	-	expression tag	UNP Q8NX33
D	-4	GLN	-	expression tag	UNP Q8NX33
D	-3	GLY	-	expression tag	UNP Q8NX33
D	-2	GLY	-	expression tag	UNP Q8NX33
D	-1	ALA	-	expression tag	UNP Q8NX33
D	0	HIS	-	expression tag	UNP Q8NX33

- Molecule 2 is ADENOSINE-5'-TRIPHOSPHATE (CCD ID: ATP) (formula:  $C_{10}H_{16}N_5O_{13}P_3$ ).



Mol	Chain	Residues	Atoms					ZeroOcc	AltConf
			Total	C	N	O	P		
2	A	1	Total	C	N	O	P	0	0
			31	10	5	13	3		
2	B	1	Total	C	N	O	P	0	0
			31	10	5	13	3		
2	C	1	Total	C	N	O	P	0	0
			31	10	5	13	3		
2	D	1	Total	C	N	O	P	0	0
			31	10	5	13	3		

- Molecule 3 is MAGNESIUM ION (CCD ID: MG) (formula: Mg).

Mol	Chain	Residues	Atoms	ZeroOcc	AltConf
3	A	1	Total Mg 1 1	0	0
3	B	1	Total Mg 1 1	0	0
3	C	1	Total Mg 1 1	0	0
3	D	1	Total Mg 1 1	0	0

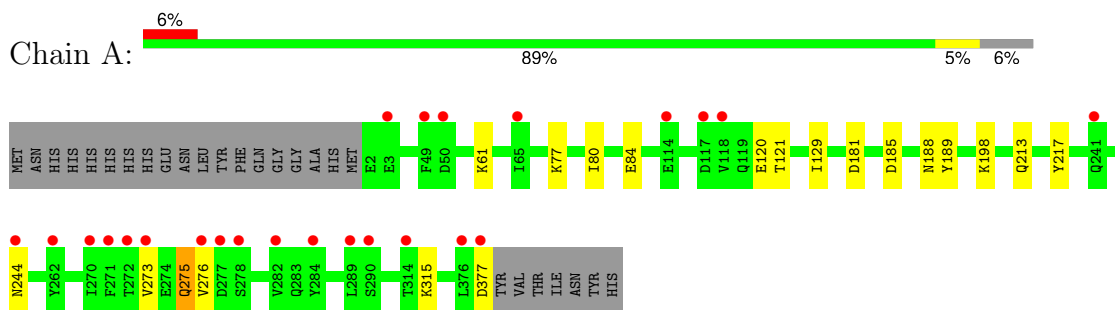
- Molecule 4 is water.

Mol	Chain	Residues	Atoms	ZeroOcc	AltConf
4	A	147	Total O 147 147	0	0
4	B	191	Total O 191 191	0	0
4	C	218	Total O 218 218	0	0
4	D	221	Total O 221 221	0	0

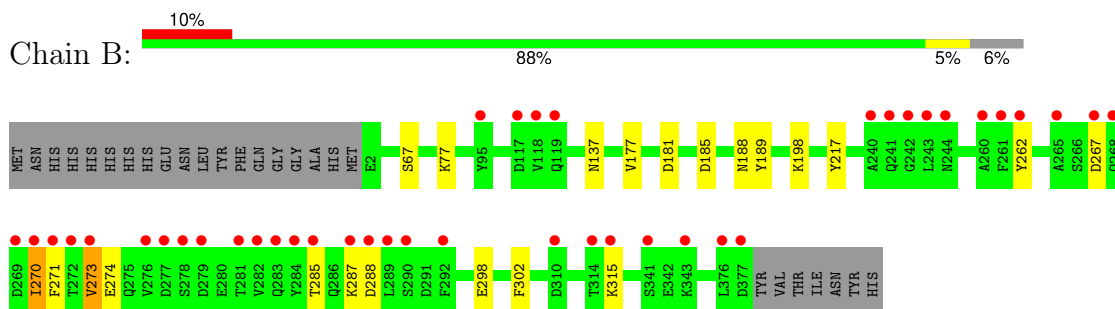
### 3 Residue-property plots [i](#)

These plots are drawn for all protein, RNA, DNA and oligosaccharide chains in the entry. The first graphic for a chain summarises the proportions of the various outlier classes displayed in the second graphic. The second graphic shows the sequence view annotated by issues in geometry and electron density. Residues are color-coded according to the number of geometric quality criteria for which they contain at least one outlier: green = 0, yellow = 1, orange = 2 and red = 3 or more. A red dot above a residue indicates a poor fit to the electron density ( $RSRZ > 2$ ). Stretches of 2 or more consecutive residues without any outlier are shown as a green connector. Residues present in the sample, but not in the model, are shown in grey.

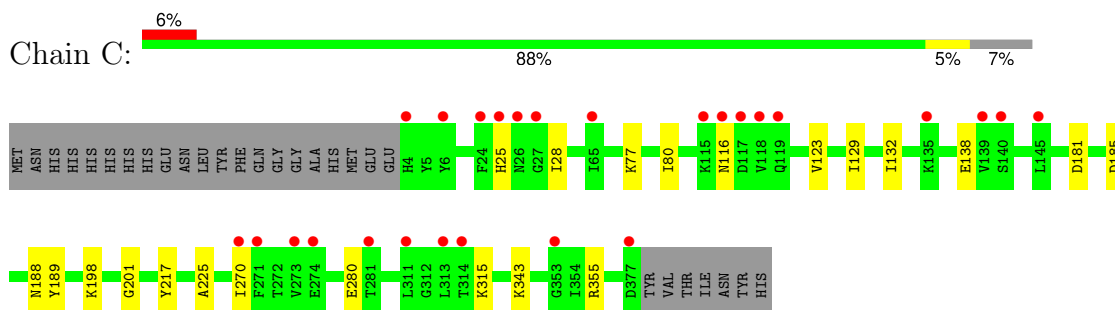
- Molecule 1: Cell division protein FtsA



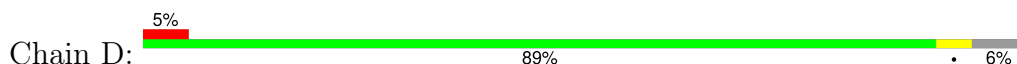
- Molecule 1: Cell division protein FtsA

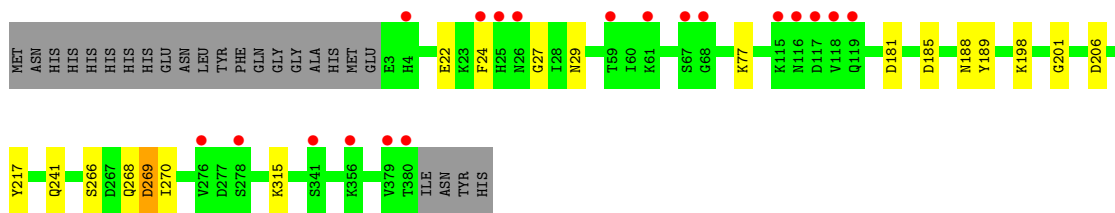


- Molecule 1: Cell division protein FtsA



- Molecule 1: Cell division protein FtsA





## 4 Data and refinement statistics

Property	Value	Source
Space group	P 1 21 1	Depositor
Cell constants a, b, c, $\alpha$ , $\beta$ , $\gamma$	106.03Å 70.63Å 120.68Å 90.00° 108.00° 90.00°	Depositor
Resolution (Å)	44.54 – 2.00 44.54 – 2.00	Depositor EDS
% Data completeness (in resolution range)	99.9 (44.54-2.00) 99.9 (44.54-2.00)	Depositor EDS
$R_{merge}$	0.06	Depositor
$R_{sym}$	(Not available)	Depositor
$\langle I/\sigma(I) \rangle$ <sup>1</sup>	2.45 (at 2.00Å)	Xtrriage
Refinement program	PHENIX (phenix.refine: 1.8.4_1496)	Depositor
R, $R_{free}$	0.208 , 0.236 0.212 , 0.238	Depositor DCC
$R_{free}$ test set	5816 reflections (4.99%)	wwPDB-VP
Wilson B-factor (Å <sup>2</sup> )	34.4	Xtrriage
Anisotropy	0.606	Xtrriage
Bulk solvent $k_{sol}$ (e/Å <sup>3</sup> ), $B_{sol}$ (Å <sup>2</sup> )	0.35 , 42.2	EDS
L-test for twinning <sup>2</sup>	$\langle  L  \rangle = 0.49$ , $\langle L^2 \rangle = 0.32$	Xtrriage
Estimated twinning fraction	No twinning to report.	Xtrriage
$F_o, F_c$ correlation	0.95	EDS
Total number of atoms	12594	wwPDB-VP
Average B, all atoms (Å <sup>2</sup> )	45.0	wwPDB-VP

Xtrriage's analysis on translational NCS is as follows: *The analyses of the Patterson function reveals a significant off-origin peak that is 25.99 % of the origin peak, indicating pseudo-translational symmetry. The chance of finding a peak of this or larger height randomly in a structure without pseudo-translational symmetry is equal to 2.8605e-03. The detected translational NCS is most likely also responsible for the elevated intensity ratio.*

<sup>1</sup>Intensities estimated from amplitudes.

<sup>2</sup>Theoretical values of  $\langle |L| \rangle$ ,  $\langle L^2 \rangle$  for acentric reflections are 0.5, 0.333 respectively for untwinned datasets, and 0.375, 0.2 for perfectly twinned datasets.

## 5 Model quality [i](#)

### 5.1 Standard geometry [i](#)

Bond lengths and bond angles in the following residue types are not validated in this section: ATP, MG

The Z score for a bond length (or angle) is the number of standard deviations the observed value is removed from the expected value. A bond length (or angle) with  $|Z| > 5$  is considered an outlier worth inspection. RMSZ is the root-mean-square of all Z scores of the bond lengths (or angles).

Mol	Chain	Bond lengths		Bond angles	
		RMSZ	# Z  >5	RMSZ	# Z  >5
1	A	0.38	0/2967	0.80	1/4013 (0.0%)
1	B	0.39	0/2961	0.80	1/4005 (0.0%)
1	C	0.37	0/2943	0.80	2/3981 (0.1%)
1	D	0.37	0/2979	0.82	1/4031 (0.0%)
All	All	0.37	0/11850	0.80	5/16030 (0.0%)

There are no bond length outliers.

All (5) bond angle outliers are listed below:

Mol	Chain	Res	Type	Atoms	Z	Observed(°)	Ideal(°)
1	D	27	GLY	N-CA-C	8.92	122.96	110.74
1	A	129	ILE	N-CA-C	-5.60	105.64	111.58
1	B	137	ASN	N-CA-C	5.15	116.70	108.41
1	C	28	ILE	N-CA-C	5.09	115.45	108.12
1	C	129	ILE	N-CA-C	-5.00	106.28	111.58

There are no chirality outliers.

There are no planarity outliers.

### 5.2 Too-close contacts [i](#)

In the following table, the Non-H and H(model) columns list the number of non-hydrogen atoms and hydrogen atoms in the chain respectively. The H(added) column lists the number of hydrogen atoms added and optimized by MolProbity. The Clashes column lists the number of clashes within the asymmetric unit, whereas Symm-Clashes lists symmetry-related clashes.

Mol	Chain	Non-H	H(model)	H(added)	Clashes	Symm-Clashes
1	A	2927	0	2862	5	0
1	B	2921	0	2858	9	0

*Continued on next page...*

Continued from previous page...

Mol	Chain	Non-H	H(model)	H(added)	Clashes	Symm-Clashes
1	C	2903	0	2846	9	0
1	D	2938	0	2877	9	0
2	A	31	0	12	0	0
2	B	31	0	12	0	0
2	C	31	0	12	0	0
2	D	31	0	12	0	0
3	A	1	0	0	0	0
3	B	1	0	0	0	0
3	C	1	0	0	0	0
3	D	1	0	0	0	0
4	A	147	0	0	0	0
4	B	191	0	0	0	0
4	C	218	0	0	1	0
4	D	221	0	0	0	0
All	All	12594	0	11491	29	0

The all-atom clashscore is defined as the number of clashes found per 1000 atoms (including hydrogen atoms). The all-atom clashscore for this structure is 1.

All (29) close contacts within the same asymmetric unit are listed below, sorted by their clash magnitude.

Atom-1	Atom-2	Interatomic distance (Å)	Clash overlap (Å)
1:C:116:ASN:HD22	1:C:123:VAL:HG23	1.51	0.75
1:C:280:GLU:O	4:C:716:HOH:O	2.15	0.64
1:D:266:SER:HB2	1:D:269:ASP:HB2	1.81	0.62
1:D:22:GLU:OE2	1:D:29:ASN:ND2	2.26	0.59
1:B:285:THR:HG22	1:B:288:ASP:OD2	2.09	0.52
1:B:270:ILE:HG12	1:B:271:PHE:N	2.27	0.49
1:B:267:ASP:OD1	1:B:285:THR:HG21	2.12	0.48
1:B:67:SER:O	1:D:241:GLN:NE2	2.49	0.46
1:D:189:TYR:OH	1:D:206:ASP:OD2	2.34	0.45
1:B:262:TYR:CE1	1:B:287:LYS:HG2	2.52	0.44
1:A:120:GLU:HG2	1:A:121:THR:HG23	2.00	0.44
1:B:298:GLU:HG2	1:B:302:PHE:CE1	2.53	0.44
1:D:185:ASP:HA	1:D:188:ASN:HB2	2.00	0.43
1:A:244:ASN:ND2	1:A:275:GLN:HG3	2.34	0.43
1:D:201:GLY:HA2	1:D:217:TYR:O	2.19	0.43
1:C:185:ASP:HA	1:C:188:ASN:HB2	2.01	0.42
1:A:185:ASP:HA	1:A:188:ASN:HB2	2.01	0.42
1:A:189:TYR:HB2	1:A:217:TYR:OH	2.19	0.42
1:A:80:ILE:HD12	1:A:213:GLN:HB3	2.02	0.42

Continued on next page...

Continued from previous page...

Atom-1	Atom-2	Interatomic distance (Å)	Clash overlap (Å)
1:B:189:TYR:HB2	1:B:217:TYR:OH	2.19	0.42
1:D:22:GLU:CD	1:D:24:PHE:HE2	2.28	0.41
1:B:273:VAL:HG13	1:B:274:GLU:O	2.21	0.41
1:C:189:TYR:HB2	1:C:217:TYR:OH	2.21	0.41
1:C:201:GLY:HA2	1:C:217:TYR:O	2.20	0.41
1:C:343:LYS:HA	1:D:268:GLN:HG3	2.02	0.40
1:B:185:ASP:HA	1:B:188:ASN:HB2	2.03	0.40
1:C:132:ILE:HG12	1:C:138:GLU:HG2	2.03	0.40
1:C:80:ILE:HD13	1:C:225:ALA:HB1	2.03	0.40
1:C:343:LYS:HG2	1:D:268:GLN:OE1	2.21	0.40

There are no symmetry-related clashes.

## 5.3 Torsion angles [i](#)

### 5.3.1 Protein backbone [i](#)

In the following table, the Percentiles column shows the percent Ramachandran outliers of the chain as a percentile score with respect to all X-ray entries followed by that with respect to entries of similar resolution.

The Analysed column shows the number of residues for which the backbone conformation was analysed, and the total number of residues.

Mol	Chain	Analysed	Favoured	Allowed	Outliers	Percentiles	
1	A	375/402 (93%)	366 (98%)	9 (2%)	0	100	100
1	B	374/402 (93%)	364 (97%)	10 (3%)	0	100	100
1	C	372/402 (92%)	362 (97%)	9 (2%)	1 (0%)	36	35
1	D	376/402 (94%)	367 (98%)	9 (2%)	0	100	100
All	All	1497/1608 (93%)	1459 (98%)	37 (2%)	1 (0%)	48	46

All (1) Ramachandran outliers are listed below:

Mol	Chain	Res	Type
1	C	25	HIS

### 5.3.2 Protein sidechains [i](#)

In the following table, the Percentiles column shows the percent sidechain outliers of the chain as a percentile score with respect to all X-ray entries followed by that with respect to entries of similar resolution.

The Analysed column shows the number of residues for which the sidechain conformation was analysed, and the total number of residues.

Mol	Chain	Analysed	Rotameric	Outliers	Percentiles	
1	A	328/350 (94%)	318 (97%)	10 (3%)	36	38
1	B	327/350 (93%)	320 (98%)	7 (2%)	47	52
1	C	325/350 (93%)	319 (98%)	6 (2%)	51	58
1	D	329/350 (94%)	323 (98%)	6 (2%)	51	58
All	All	1309/1400 (94%)	1280 (98%)	29 (2%)	45	50

All (29) residues with a non-rotameric sidechain are listed below:

Mol	Chain	Res	Type
1	A	61	LYS
1	A	77	LYS
1	A	84	GLU
1	A	181	ASP
1	A	198	LYS
1	A	273	VAL
1	A	275	GLN
1	A	276	VAL
1	A	315	LYS
1	A	377	ASP
1	B	77	LYS
1	B	177	VAL
1	B	181	ASP
1	B	198	LYS
1	B	270	ILE
1	B	273	VAL
1	B	315	LYS
1	C	77	LYS
1	C	181	ASP
1	C	198	LYS
1	C	270	ILE
1	C	315	LYS
1	C	355	ARG
1	D	77	LYS

*Continued on next page...*

*Continued from previous page...*

Mol	Chain	Res	Type
1	D	181	ASP
1	D	198	LYS
1	D	269	ASP
1	D	270	ILE
1	D	315	LYS

Sometimes sidechains can be flipped to improve hydrogen bonding and reduce clashes. All (7) such sidechains are listed below:

Mol	Chain	Res	Type
1	A	149	HIS
1	A	244	ASN
1	A	275	GLN
1	C	43	ASN
1	C	161	GLN
1	D	43	ASN
1	D	241	GLN

### 5.3.3 RNA [i](#)

There are no RNA molecules in this entry.

### 5.4 Non-standard residues in protein, DNA, RNA chains [i](#)

There are no non-standard protein/DNA/RNA residues in this entry.

### 5.5 Carbohydrates [i](#)

There are no oligosaccharides in this entry.

### 5.6 Ligand geometry [i](#)

Of 8 ligands modelled in this entry, 4 are monoatomic - leaving 4 for Mogul analysis.

In the following table, the Counts columns list the number of bonds (or angles) for which Mogul statistics could be retrieved, the number of bonds (or angles) that are observed in the model and the number of bonds (or angles) that are defined in the Chemical Component Dictionary. The Link column lists molecule types, if any, to which the group is linked. The Z score for a bond length (or angle) is the number of standard deviations the observed value is removed from the expected value. A bond length (or angle) with  $|Z| > 2$  is considered an outlier worth inspection. RMSZ is the root-mean-square of all Z scores of the bond lengths (or angles).

Mol	Type	Chain	Res	Link	Bond lengths			Bond angles		
					Counts	RMSZ	# Z  > 2	Counts	RMSZ	# Z  > 2
2	ATP	D	400	3	32,33,33	1.34	4 (12%)	48,52,52	1.68	10 (20%)
2	ATP	A	400	3	32,33,33	1.37	4 (12%)	48,52,52	1.67	9 (18%)
2	ATP	B	400	3	32,33,33	1.38	4 (12%)	48,52,52	1.70	9 (18%)
2	ATP	C	400	3	32,33,33	1.36	4 (12%)	48,52,52	1.67	9 (18%)

In the following table, the Chirals column lists the number of chiral outliers, the number of chiral centers analysed, the number of these observed in the model and the number defined in the Chemical Component Dictionary. Similar counts are reported in the Torsion and Rings columns. '-' means no outliers of that kind were identified.

Mol	Type	Chain	Res	Link	Chirals	Torsions	Rings
2	ATP	D	400	3	-	2/22/38/38	0/3/3/3
2	ATP	A	400	3	-	1/22/38/38	0/3/3/3
2	ATP	B	400	3	-	2/22/38/38	0/3/3/3
2	ATP	C	400	3	-	2/22/38/38	0/3/3/3

All (16) bond length outliers are listed below:

Mol	Chain	Res	Type	Atoms	Z	Observed(Å)	Ideal(Å)
2	C	400	ATP	C5-C4	4.83	1.47	1.39
2	A	400	ATP	C5-C4	4.80	1.47	1.39
2	B	400	ATP	C5-C4	4.73	1.47	1.39
2	D	400	ATP	C5-C4	4.72	1.47	1.39
2	A	400	ATP	C5-C6	2.75	1.48	1.41
2	B	400	ATP	C5-C6	2.71	1.48	1.41
2	C	400	ATP	C5-C6	2.70	1.48	1.41
2	D	400	ATP	C5-C6	2.69	1.48	1.41
2	D	400	ATP	C8-N7	2.42	1.36	1.31
2	C	400	ATP	C8-N7	2.39	1.36	1.31
2	A	400	ATP	C8-N7	2.38	1.36	1.31
2	B	400	ATP	C8-N7	2.36	1.36	1.31
2	B	400	ATP	C5-N7	-2.25	1.35	1.39
2	A	400	ATP	C5-N7	-2.22	1.35	1.39
2	C	400	ATP	C5-N7	-2.18	1.35	1.39
2	D	400	ATP	C5-N7	-2.14	1.35	1.39

All (37) bond angle outliers are listed below:

Mol	Chain	Res	Type	Atoms	Z	Observed(°)	Ideal(°)
2	B	400	ATP	C5-C4-N3	-5.54	119.09	126.72

*Continued on next page...*

Continued from previous page...

Mol	Chain	Res	Type	Atoms	Z	Observed(°)	Ideal(°)
2	A	400	ATP	C5-C4-N3	-5.54	119.09	126.72
2	C	400	ATP	C5-C4-N3	-5.38	119.30	126.72
2	D	400	ATP	C5-C4-N3	-5.30	119.42	126.72
2	B	400	ATP	N3-C4-N9	4.42	134.69	127.17
2	A	400	ATP	N3-C4-N9	4.39	134.63	127.17
2	C	400	ATP	N3-C4-N9	4.37	134.61	127.17
2	D	400	ATP	N3-C4-N9	4.33	134.53	127.17
2	D	400	ATP	C2-N3-C4	3.56	120.53	111.83
2	A	400	ATP	C2-N3-C4	3.54	120.47	111.83
2	B	400	ATP	C2-N3-C4	3.53	120.44	111.83
2	D	400	ATP	N3-C2-N1	-3.51	123.27	128.58
2	A	400	ATP	C4-C5-N7	-3.45	106.63	110.58
2	C	400	ATP	C2-N3-C4	3.45	120.25	111.83
2	B	400	ATP	C4-C5-N7	-3.43	106.66	110.58
2	C	400	ATP	C4-C5-N7	-3.36	106.74	110.58
2	B	400	ATP	N3-C2-N1	-3.31	123.57	128.58
2	D	400	ATP	C4-C5-N7	-3.29	106.83	110.58
2	C	400	ATP	N3-C2-N1	-3.28	123.62	128.58
2	A	400	ATP	N3-C2-N1	-3.27	123.63	128.58
2	D	400	ATP	C4-N9-C8	2.96	108.84	105.74
2	C	400	ATP	C4-N9-C8	2.81	108.69	105.74
2	B	400	ATP	C4-N9-C8	2.68	108.55	105.74
2	A	400	ATP	C4-N9-C8	2.64	108.51	105.74
2	C	400	ATP	C5-N7-C8	2.49	107.37	103.45
2	B	400	ATP	C5-N7-C8	2.49	107.36	103.45
2	A	400	ATP	C5-N7-C8	2.47	107.33	103.45
2	D	400	ATP	C5-N7-C8	2.44	107.29	103.45
2	D	400	ATP	C6-C5-N7	2.25	136.43	132.09
2	C	400	ATP	C2-N1-C6	2.19	122.33	118.73
2	A	400	ATP	C6-C5-N7	2.18	136.29	132.09
2	D	400	ATP	C2-N1-C6	2.16	122.28	118.73
2	B	400	ATP	C6-C5-N7	2.15	136.24	132.09
2	A	400	ATP	C2-N1-C6	2.14	122.24	118.73
2	C	400	ATP	C6-C5-N7	2.13	136.20	132.09
2	B	400	ATP	C2-N1-C6	2.13	122.22	118.73
2	D	400	ATP	N9-C8-N7	-2.08	110.98	113.94

There are no chirality outliers.

All (7) torsion outliers are listed below:

Mol	Chain	Res	Type	Atoms
2	B	400	ATP	PB-O3B-PG-O3G

Continued on next page...

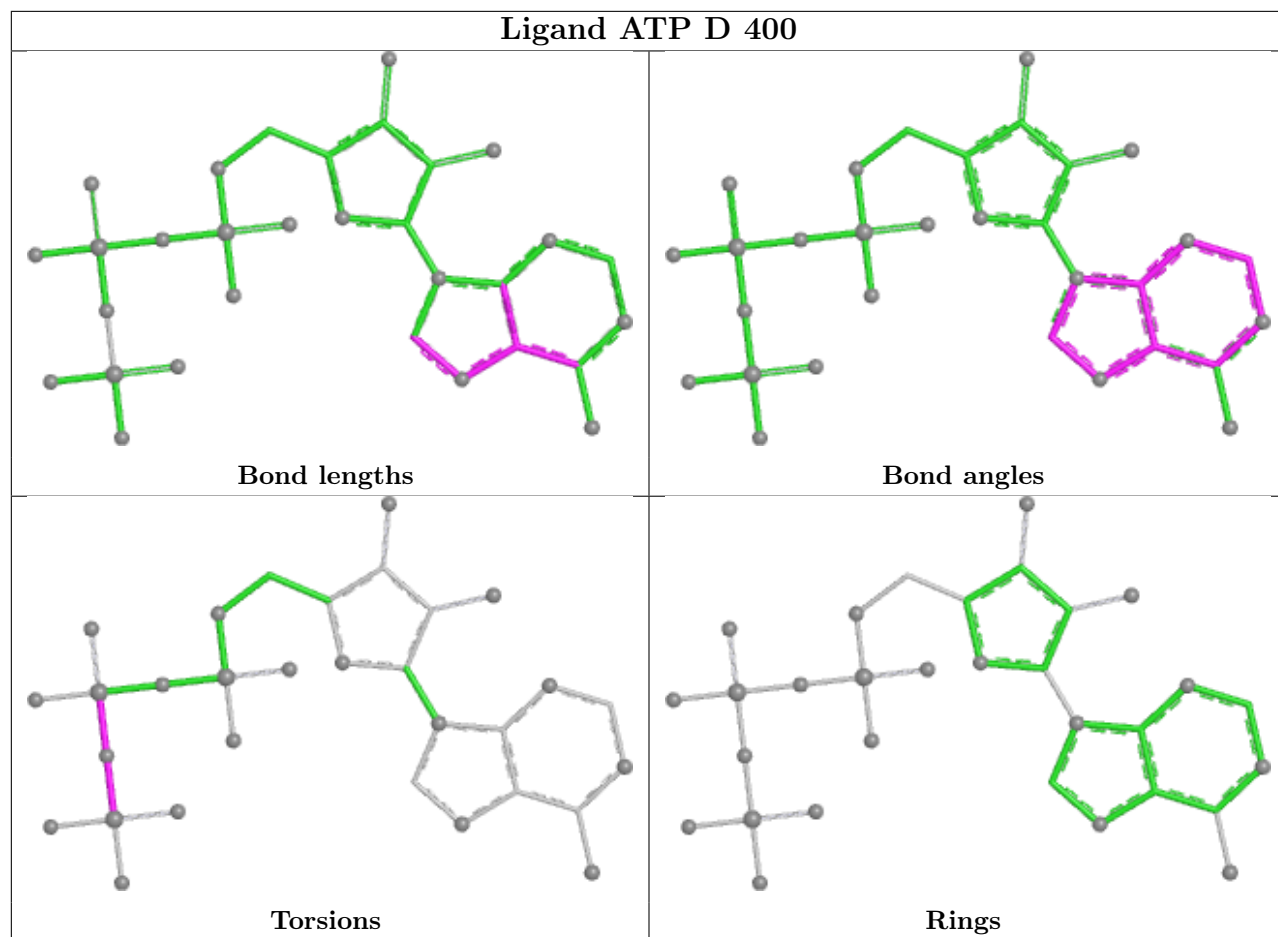
*Continued from previous page...*

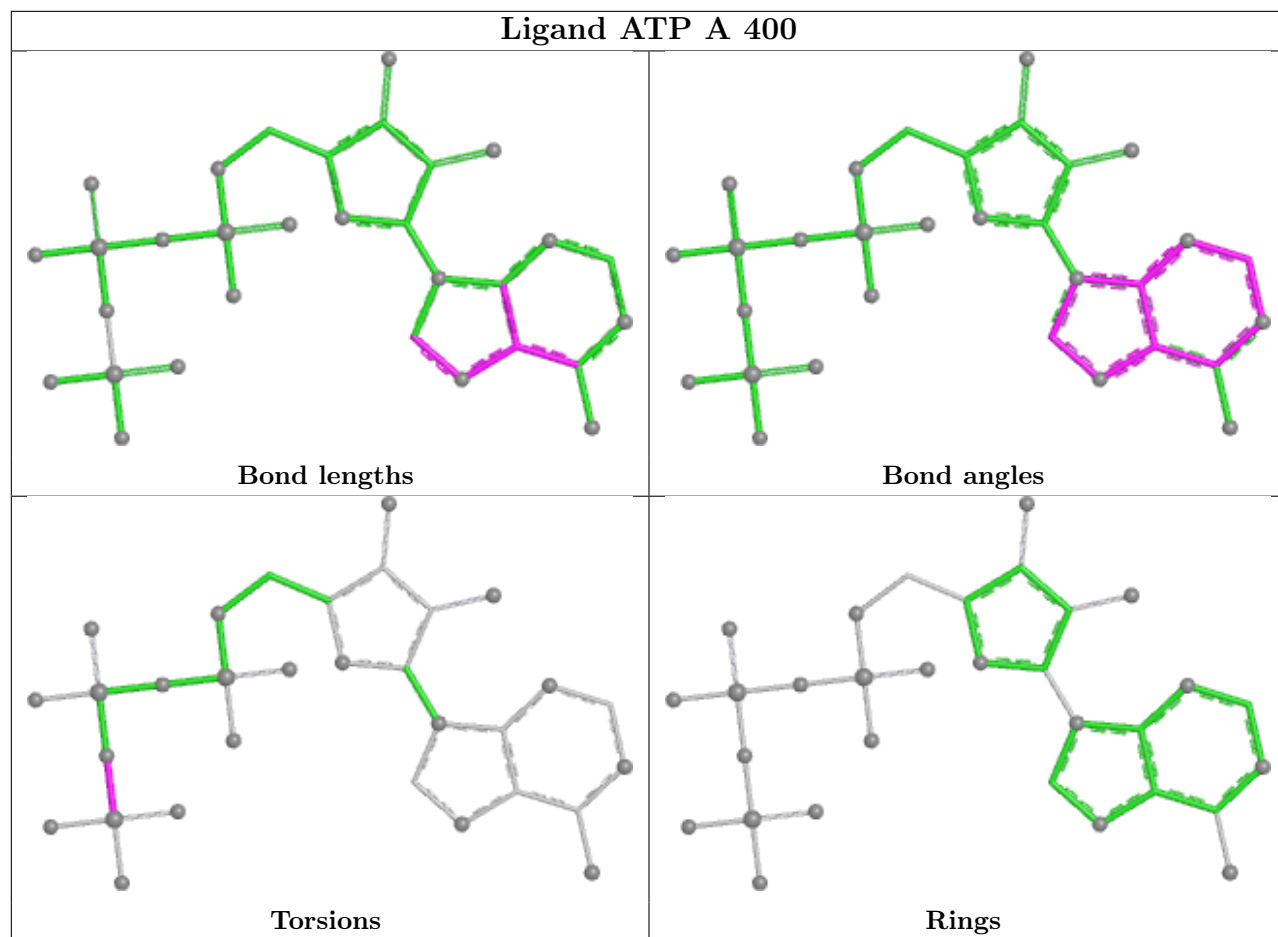
Mol	Chain	Res	Type	Atoms
2	C	400	ATP	PB-O3B-PG-O2G
2	D	400	ATP	PB-O3B-PG-O3G
2	A	400	ATP	PB-O3B-PG-O3G
2	B	400	ATP	PB-O3B-PG-O2G
2	C	400	ATP	PB-O3B-PG-O3G
2	D	400	ATP	PG-O3B-PB-O2B

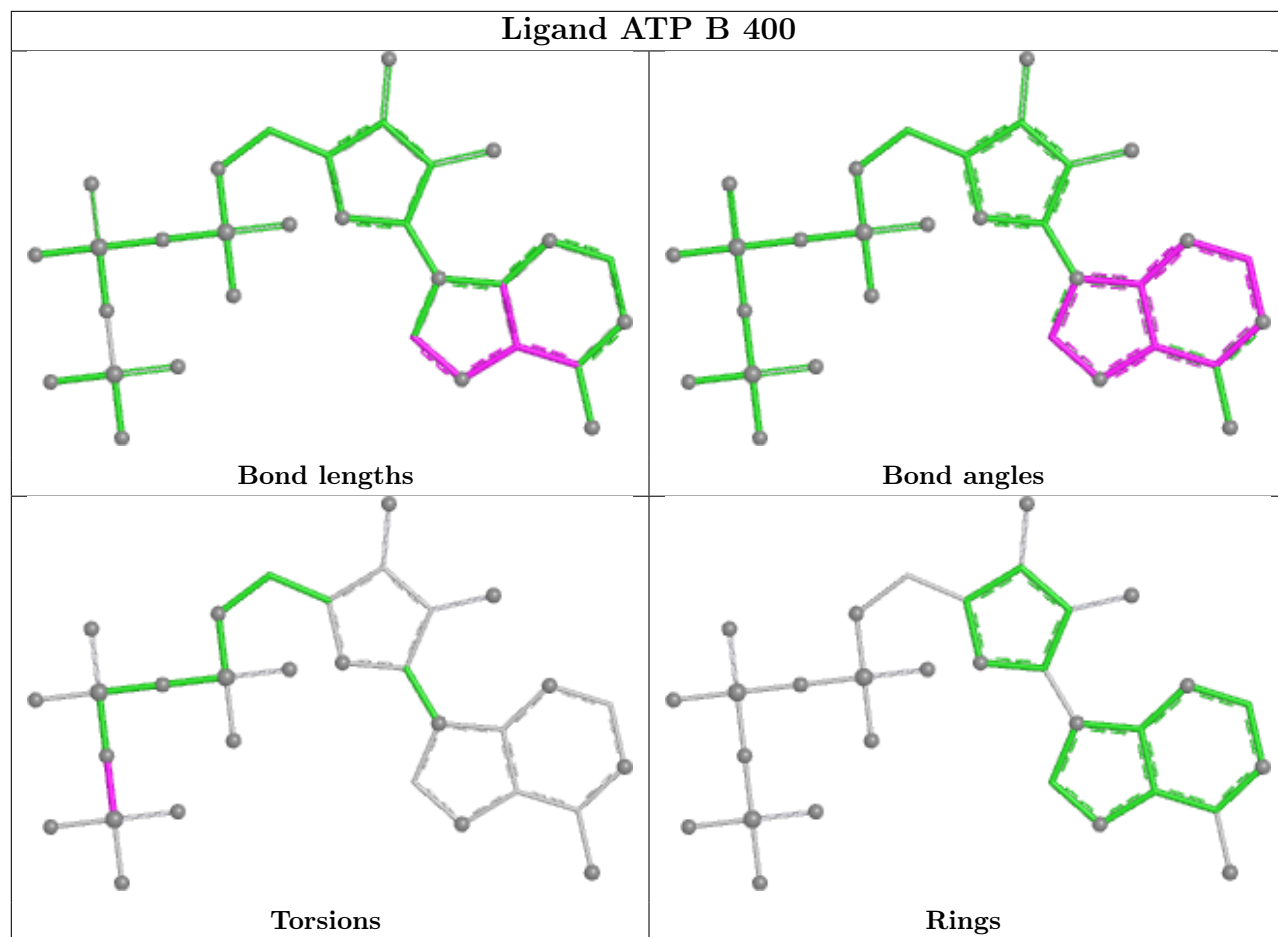
There are no ring outliers.

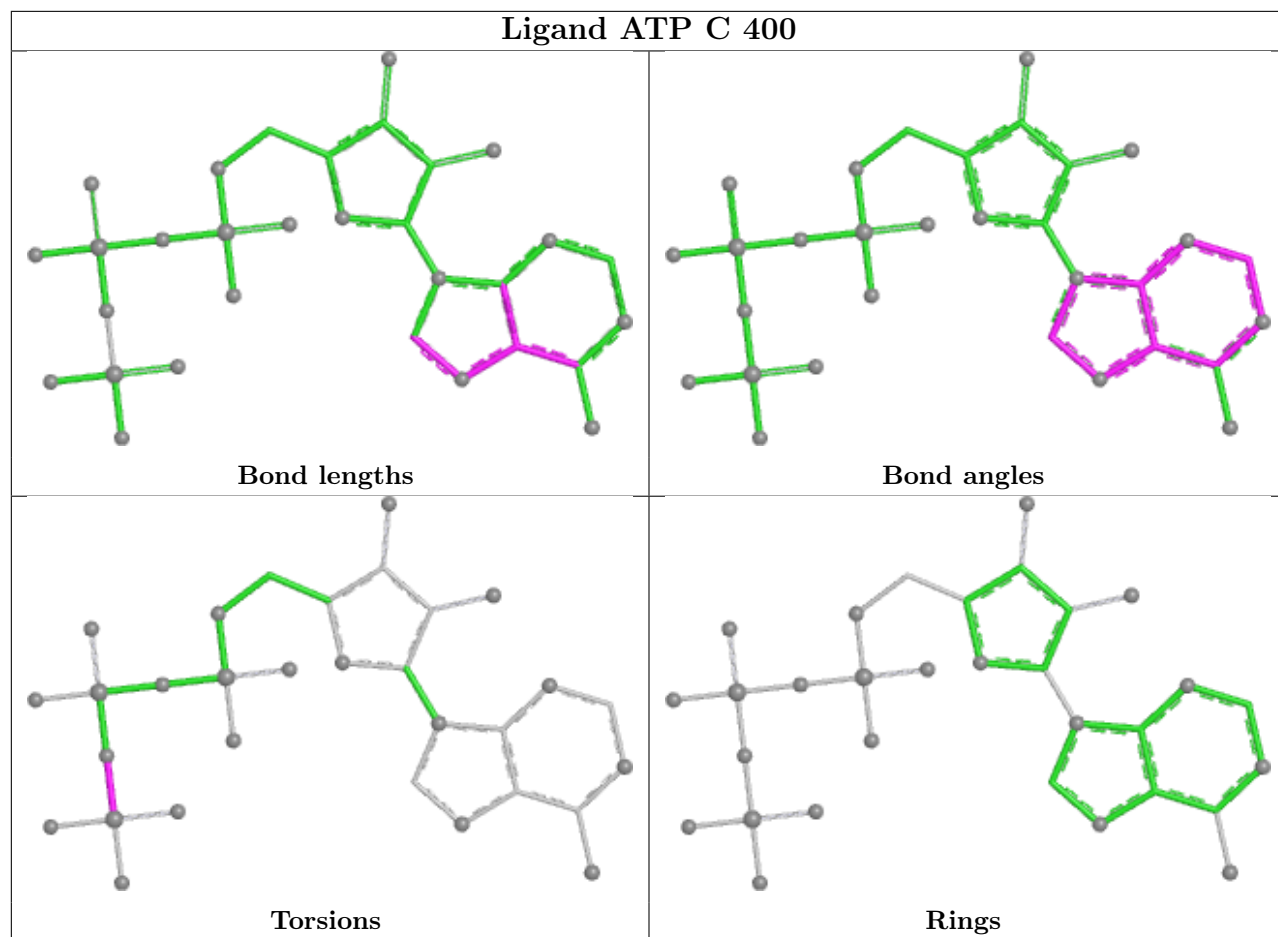
No monomer is involved in short contacts.

The following is a two-dimensional graphical depiction of Mogul quality analysis of bond lengths, bond angles, torsion angles, and ring geometry for all instances of the Ligand of Interest. In addition, ligands with molecular weight > 250 and outliers as shown on the validation Tables will also be included. For torsion angles, if less than 5% of the Mogul distribution of torsion angles is within 10 degrees of the torsion angle in question, then that torsion angle is considered an outlier. Any bond that is central to one or more torsion angles identified as an outlier by Mogul will be highlighted in the graph. For rings, the root-mean-square deviation (RMSD) between the ring in question and similar rings identified by Mogul is calculated over all ring torsion angles. If the average RMSD is greater than 60 degrees and the minimal RMSD between the ring in question and any Mogul-identified rings is also greater than 60 degrees, then that ring is considered an outlier. The outliers are highlighted in purple. The color gray indicates Mogul did not find sufficient equivalents in the CSD to analyse the geometry.









## 5.7 Other polymers [i](#)

There are no such residues in this entry.

## 5.8 Polymer linkage issues [i](#)

There are no chain breaks in this entry.

## 6 Fit of model and data

### 6.1 Protein, DNA and RNA chains

In the following table, the column labelled ‘#RSRZ > 2’ contains the number (and percentage) of RSRZ outliers, followed by percent RSRZ outliers for the chain as percentile scores relative to all X-ray entries and entries of similar resolution. The OWAB column contains the minimum, median, 95<sup>th</sup> percentile and maximum values of the occupancy-weighted average B-factor per residue. The column labelled ‘Q < 0.9’ lists the number of (and percentage) of residues with an average occupancy less than 0.9.

Mol	Chain	Analysed	<RSRZ>	#RSRZ>2	OWAB(Å <sup>2</sup> )	Q<0.9
1	A	376/402 (93%)	0.58	24 (6%) 25 24	19, 44, 81, 104	1 (0%)
1	B	376/402 (93%)	0.56	41 (10%) 10 9	23, 39, 79, 104	0
1	C	374/402 (93%)	0.48	26 (6%) 22 21	25, 40, 71, 88	0
1	D	378/402 (94%)	0.42	19 (5%) 34 33	24, 39, 68, 100	0
All	All	1504/1608 (93%)	0.51	110 (7%) 21 19	19, 40, 74, 104	1 (0%)

All (110) RSRZ outliers are listed below:

Mol	Chain	Res	Type	RSRZ
1	C	118	VAL	5.0
1	B	95	TYR	4.5
1	C	117	ASP	4.1
1	B	267	ASP	4.0
1	D	380	THR	3.9
1	B	282	VAL	3.9
1	D	25	HIS	3.9
1	C	313	LEU	3.8
1	B	270	ILE	3.8
1	C	116	ASN	3.7
1	B	377	ASP	3.7
1	D	118	VAL	3.7
1	A	314	THR	3.5
1	D	276	VAL	3.5
1	B	277	ASP	3.4
1	B	269	ASP	3.4
1	D	24	PHE	3.4
1	C	314	THR	3.4
1	A	65	ILE	3.4
1	C	353	GLY	3.3
1	A	376	LEU	3.3

*Continued on next page...*

*Continued from previous page...*

<b>Mol</b>	<b>Chain</b>	<b>Res</b>	<b>Type</b>	<b>RSRZ</b>
1	B	244	ASN	3.3
1	B	117	ASP	3.3
1	B	283	GLN	3.2
1	A	117	ASP	3.2
1	C	274	GLU	3.2
1	B	273	VAL	3.1
1	A	377	ASP	3.1
1	A	273	VAL	3.1
1	A	278	SER	3.1
1	B	284	TYR	3.0
1	B	118	VAL	3.0
1	B	276	VAL	3.0
1	D	26	ASN	3.0
1	B	278	SER	3.0
1	C	377	ASP	3.0
1	A	282	VAL	3.0
1	B	281	THR	2.9
1	C	139	VAL	2.9
1	B	271	PHE	2.9
1	B	376	LEU	2.9
1	B	261	PHE	2.8
1	B	265	ALA	2.8
1	D	61	LYS	2.8
1	C	27	GLY	2.8
1	C	25	HIS	2.8
1	A	284	TYR	2.8
1	C	270	ILE	2.8
1	A	262	TYR	2.7
1	B	242	GLY	2.7
1	A	270	ILE	2.7
1	D	115	LYS	2.7
1	A	272	THR	2.6
1	D	379	VAL	2.6
1	B	241	GLN	2.6
1	A	50	ASP	2.6
1	C	24	PHE	2.6
1	C	273	VAL	2.6
1	A	3	GLU	2.5
1	D	117	ASP	2.5
1	B	243	LEU	2.5
1	A	276	VAL	2.5
1	B	268	GLN	2.5

*Continued on next page...*

*Continued from previous page...*

<b>Mol</b>	<b>Chain</b>	<b>Res</b>	<b>Type</b>	<b>RSRZ</b>
1	C	145	LEU	2.5
1	C	115	LYS	2.4
1	B	288	ASP	2.4
1	C	65	ILE	2.4
1	C	26	ASN	2.3
1	D	67	SER	2.3
1	B	289	LEU	2.3
1	B	292	PHE	2.3
1	B	262	TYR	2.3
1	A	290	SER	2.3
1	D	4	HIS	2.3
1	A	49	PHE	2.3
1	C	119	GLN	2.3
1	B	290	SER	2.2
1	A	271	PHE	2.2
1	A	277	ASP	2.2
1	B	240	ALA	2.2
1	D	341	SER	2.2
1	B	285	THR	2.2
1	B	279	ASP	2.2
1	A	241	GLN	2.2
1	B	315	LYS	2.2
1	B	310	ASP	2.2
1	B	260	ALA	2.1
1	D	68	GLY	2.1
1	D	356	LYS	2.1
1	D	116	ASN	2.1
1	B	272	THR	2.1
1	B	343	LYS	2.1
1	D	119	GLN	2.1
1	C	6	TYR	2.1
1	C	135	LYS	2.1
1	C	311	LEU	2.0
1	A	244	ASN	2.0
1	C	4	HIS	2.0
1	B	314	THR	2.0
1	B	287	LYS	2.0
1	A	114	GLU	2.0
1	A	118	VAL	2.0
1	C	271	PHE	2.0
1	B	341	SER	2.0
1	C	140	SER	2.0

*Continued on next page...*

*Continued from previous page...*

Mol	Chain	Res	Type	RSRZ
1	D	278	SER	2.0
1	A	289	LEU	2.0
1	B	119	GLN	2.0
1	C	281	THR	2.0
1	D	59	THR	2.0

## 6.2 Non-standard residues in protein, DNA, RNA chains [i](#)

There are no non-standard protein/DNA/RNA residues in this entry.

## 6.3 Carbohydrates [i](#)

There are no oligosaccharides in this entry.

## 6.4 Ligands [i](#)

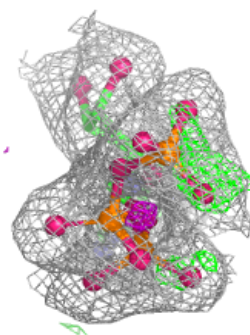
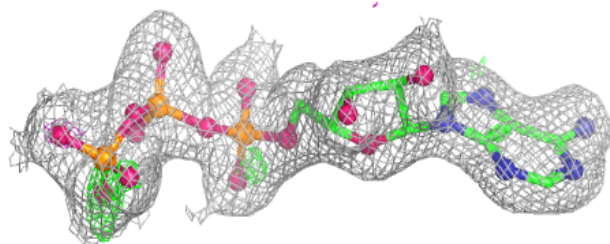
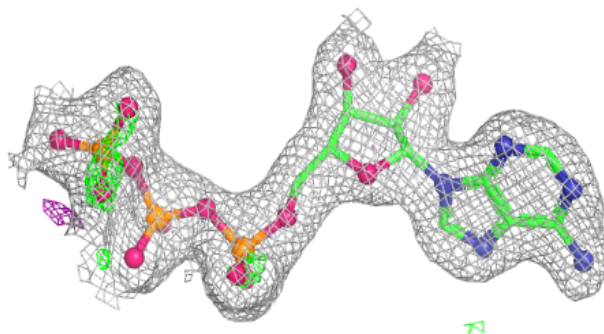
In the following table, the Atoms column lists the number of modelled atoms in the group and the number defined in the chemical component dictionary. The B-factors column lists the minimum, median, 95<sup>th</sup> percentile and maximum values of B factors of atoms in the group. The column labelled 'Q< 0.9' lists the number of atoms with occupancy less than 0.9.

Mol	Type	Chain	Res	Atoms	RSCC	RSR	B-factors(Å <sup>2</sup> )	Q<0.9
2	ATP	B	400	31/31	0.97	0.07	21,34,43,44	0
2	ATP	C	400	31/31	0.97	0.07	25,31,38,42	0
2	ATP	D	400	31/31	0.97	0.07	24,29,37,57	0
3	MG	D	401	1/1	0.97	0.04	33,33,33,33	0
2	ATP	A	400	31/31	0.98	0.06	32,38,48,49	0
3	MG	B	401	1/1	0.99	0.08	34,34,34,34	0
3	MG	C	401	1/1	0.99	0.05	35,35,35,35	0
3	MG	A	401	1/1	0.99	0.03	35,35,35,35	0

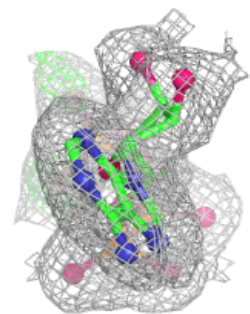
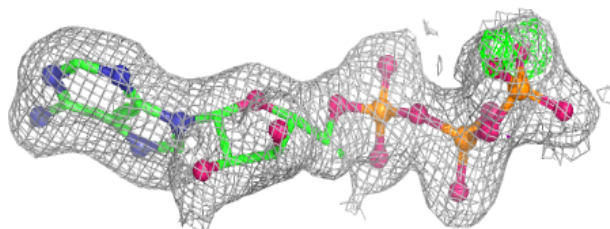
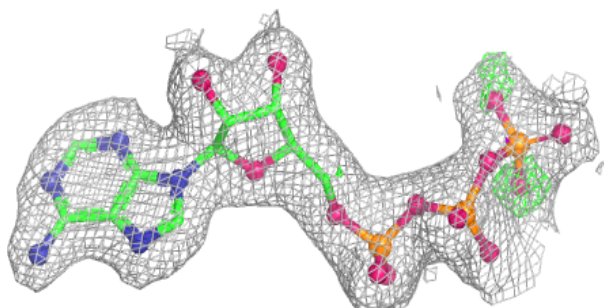
The following is a graphical depiction of the model fit to experimental electron density of all instances of the Ligand of Interest. In addition, ligands with molecular weight > 250 and outliers as shown on the geometry validation Tables will also be included. Each fit is shown from different orientation to approximate a three-dimensional view.

**Electron density around ATP B 400:**

$2mF_o-DF_c$  (at 0.7 rmsd) in gray  
 $mF_o-DF_c$  (at 3 rmsd) in purple (negative)  
and green (positive)

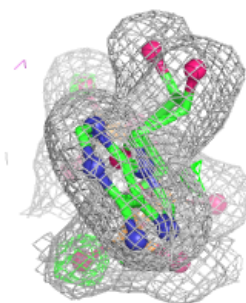
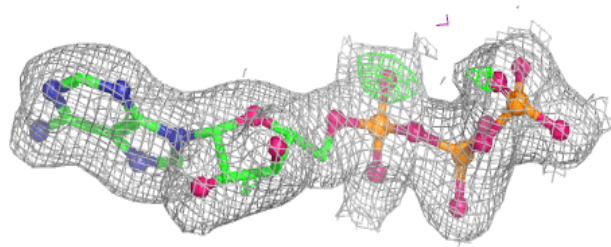
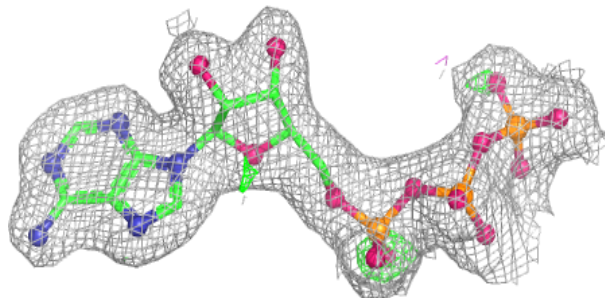
**Electron density around ATP C 400:**

$2mF_o-DF_c$  (at 0.7 rmsd) in gray  
 $mF_o-DF_c$  (at 3 rmsd) in purple (negative)  
and green (positive)

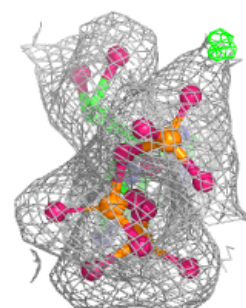
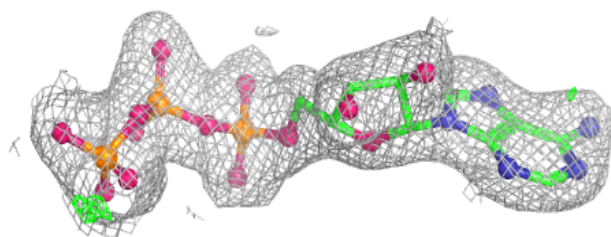
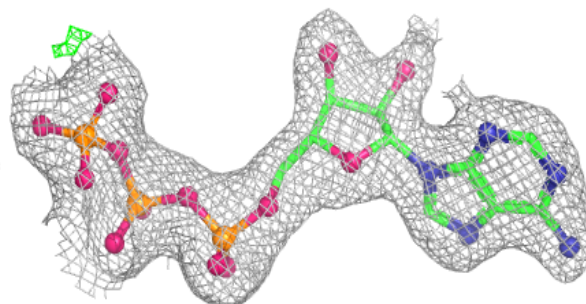


**Electron density around ATP D 400:**

$2mF_o-DF_c$  (at 0.7 rmsd) in gray  
 $mF_o-DF_c$  (at 3 rmsd) in purple (negative)  
and green (positive)

**Electron density around ATP A 400:**

$2mF_o-DF_c$  (at 0.7 rmsd) in gray  
 $mF_o-DF_c$  (at 3 rmsd) in purple (negative)  
and green (positive)



## 6.5 Other polymers [i](#)

There are no such residues in this entry.