



wwPDB EM Validation Summary Report ⓘ

Mar 28, 2026 – 06:05 PM UTC

PDB ID : 7WTR / pdb_00007wtr
EMDB ID : EMD-32796
Title : Cryo-EM structure of a yeast pre-40S ribosomal subunit - State Tsr1-3
Authors : Cheng, J.; Lau, B.; Thoms, M.; Ameismeier, M.; Berninghausen, O.; Hurt, E.; Beckmann, R.
Deposited on : 2022-02-05
Resolution : 3.50 Å(reported)

This is a wwPDB EM Validation Summary Report for a publicly released PDB entry.

We welcome your comments at validation@mail.wwpdb.org

A user guide is available at

<https://www.wwpdb.org/validation/2017/EMValidationReportHelp>

with specific help available everywhere you see the ⓘ symbol.

The types of validation reports are described at

<http://www.wwpdb.org/validation/2017/FAQs#types>.

The following versions of software and data (see [references ⓘ](#)) were used in the production of this report:

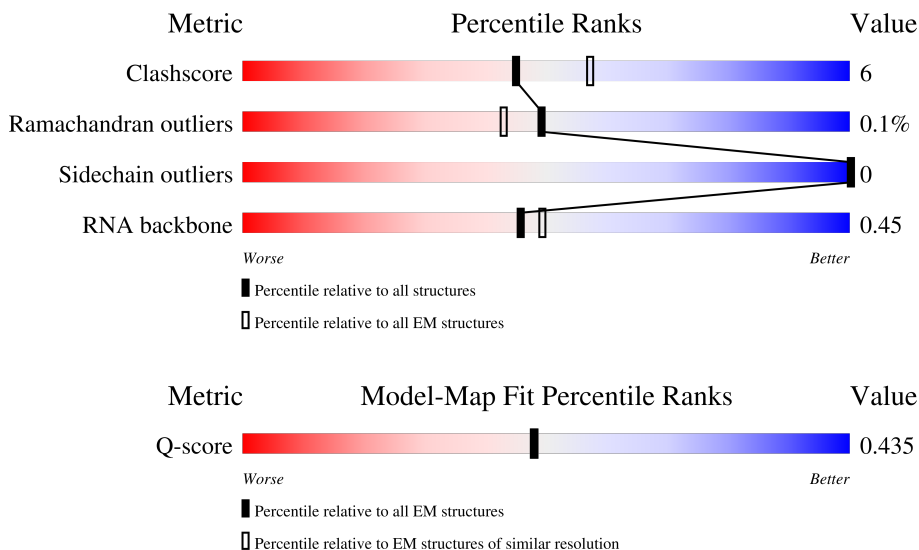
EMDB validation analysis : 0.0.1.dev132
MolProbity : 4-5-2 with Phenix2.0
Percentile statistics : 20250101.v01 (using entries in the PDB archive January 1st 2025)
EM percentile statistics : 202505.v01 (Using data in the EMDB archive up until May 2025)
MapQ : 1.9.13
Ideal geometry (proteins) : Engh & Huber (2001)
Ideal geometry (DNA, RNA) : Parkinson et al. (1996)
Validation Pipeline (wwPDB-VP) : 2.49

1 Overall quality at a glance i

The following experimental techniques were used to determine the structure:
ELECTRON MICROSCOPY

The reported resolution of this entry is 3.50 Å.

Percentile scores (ranging between 0-100) for global validation metrics of the entry are shown in the following graphic. The table shows the number of entries on which the scores are based.



Metric	Whole archive (#Entries)	EM structures (#Entries)	Similar EM resolution (#Entries, resolution range(Å))
Clashscore	229148	23984	-
Ramachandran outliers	224038	23583	-
Sidechain outliers	223484	23102	-
RNA backbone	8273	3508	-
Q-score	-	25397	13950 (3.00 - 4.00)

The table below summarises the geometric issues observed across the polymeric chains and their fit to the map. The red, orange, yellow and green segments of the bar indicate the fraction of residues that contain outliers for ≥ 3 , 2, 1 and 0 types of geometric quality criteria respectively. A grey segment represents the fraction of residues that are not modelled. The numeric value for each fraction is indicated below the corresponding segment, with a dot representing fractions $\leq 5\%$. The upper red bar (where present) indicates the fraction of residues that have poor fit to the EM map (all-atom inclusion $< 40\%$). The numeric value is given above the bar.

Mol	Chain	Length	Quality of chain
1	C2	1800	
2	SB	255	
3	SC	254	

Continued on next page...

Continued from previous page...

Mol	Chain	Length	Quality of chain
4	SE	261	83% 16%
5	SG	236	74% 19% 8%
6	SH	190	77% 18% . .
7	SI	200	80% 14% 6%
8	SJ	197	76% 18% 6%
9	SL	156	76% 17% 6%
10	SN	151	89% 11% .
11	SO	137	75% 18% 7%
12	SW	130	87% 12% .
13	SX	145	80% 19% .
14	SY	135	82% 15% . .
15	Sb	82	80% 18% .
16	Se	63	14% 63% 10% . 25%
17	CA	274	52% 14% 34%
18	CB	275	9% . 87%
19	CC	788	62% 16% 22%

2 Entry composition [i](#)

There are 20 unique types of molecules in this entry. The entry contains 53512 atoms, of which 0 are hydrogens and 0 are deuteriums.

In the tables below, the AltConf column contains the number of residues with at least one atom in alternate conformation and the Trace column contains the number of residues modelled with at most 2 atoms.

- Molecule 1 is a RNA chain called 18S rRNA.

Mol	Chain	Residues	Atoms					AltConf	Trace
			Total	C	N	O	P		
1	C2	1298	27674	12376	4917	9083	1298	0	0

- Molecule 2 is a protein called 40S ribosomal protein S1-A.

Mol	Chain	Residues	Atoms					AltConf	Trace
			Total	C	N	O	S		
2	SB	216	1722	1091	312	315	4	0	0

- Molecule 3 is a protein called 40S ribosomal protein S2.

Mol	Chain	Residues	Atoms					AltConf	Trace
			Total	C	N	O	S		
3	SC	217	1635	1047	289	297	2	0	0

- Molecule 4 is a protein called 40S ribosomal protein S4-A.

Mol	Chain	Residues	Atoms					AltConf	Trace
			Total	C	N	O	S		
4	SE	260	2068	1316	389	360	3	0	0

- Molecule 5 is a protein called 40S ribosomal protein S6-A.

Mol	Chain	Residues	Atoms					AltConf	Trace
			Total	C	N	O	S		
5	SG	218	1755	1102	337	313	3	0	0

- Molecule 6 is a protein called 40S ribosomal protein S7-A.

Mol	Chain	Residues	Atoms				AltConf	Trace
			Total	C	N	O		
6	SH	185	1486	954	266	266	0	0

- Molecule 7 is a protein called 40S ribosomal protein S8-A.

Mol	Chain	Residues	Atoms					AltConf	Trace
			Total	C	N	O	S		
7	SI	188	1489	925	298	264	2	0	0

- Molecule 8 is a protein called 40S ribosomal protein S9-A.

Mol	Chain	Residues	Atoms					AltConf	Trace
			Total	C	N	O	S		
8	SJ	185	1494	943	289	261	1	0	0

- Molecule 9 is a protein called 40S ribosomal protein S11-A.

Mol	Chain	Residues	Atoms					AltConf	Trace
			Total	C	N	O	S		
9	SL	146	1168	747	221	197	3	0	0

- Molecule 10 is a protein called 40S ribosomal protein S13.

Mol	Chain	Residues	Atoms					AltConf	Trace
			Total	C	N	O	S		
10	SN	150	1192	759	224	207	2	0	0

- Molecule 11 is a protein called 40S ribosomal protein S14-A.

Mol	Chain	Residues	Atoms					AltConf	Trace
			Total	C	N	O	S		
11	SO	128	949	582	188	176	3	0	0

- Molecule 12 is a protein called 40S ribosomal protein S22-A.

Mol	Chain	Residues	Atoms					AltConf	Trace
			Total	C	N	O	S		
12	SW	129	1021	650	188	180	3	0	0

- Molecule 13 is a protein called 40S ribosomal protein S23-A.

Mol	Chain	Residues	Atoms					AltConf	Trace
			Total	C	N	O	S		
13	SX	144	1121	708	220	191	2	0	0

- Molecule 14 is a protein called 40S ribosomal protein S24-A.

Mol	Chain	Residues	Atoms				AltConf	Trace
14	SY	134	Total	C	N	O	0	0
			1073	676	208	189		

- Molecule 15 is a protein called 40S ribosomal protein S27-A.

Mol	Chain	Residues	Atoms					AltConf	Trace
15	Sb	81	Total	C	N	O	S	0	0
			610	382	110	113	5		

- Molecule 16 is a protein called 40S ribosomal protein S30-A.

Mol	Chain	Residues	Atoms					AltConf	Trace
16	Se	47	Total	C	N	O	S	0	0
			378	238	80	59	1		

- Molecule 17 is a protein called Pre-rRNA-processing protein PNO1.

Mol	Chain	Residues	Atoms					AltConf	Trace
17	CA	181	Total	C	N	O	S	0	0
			1436	917	261	254	4		

- Molecule 18 is a protein called 18S rRNA (guanine(1575)-N(7))-methyltransferase.

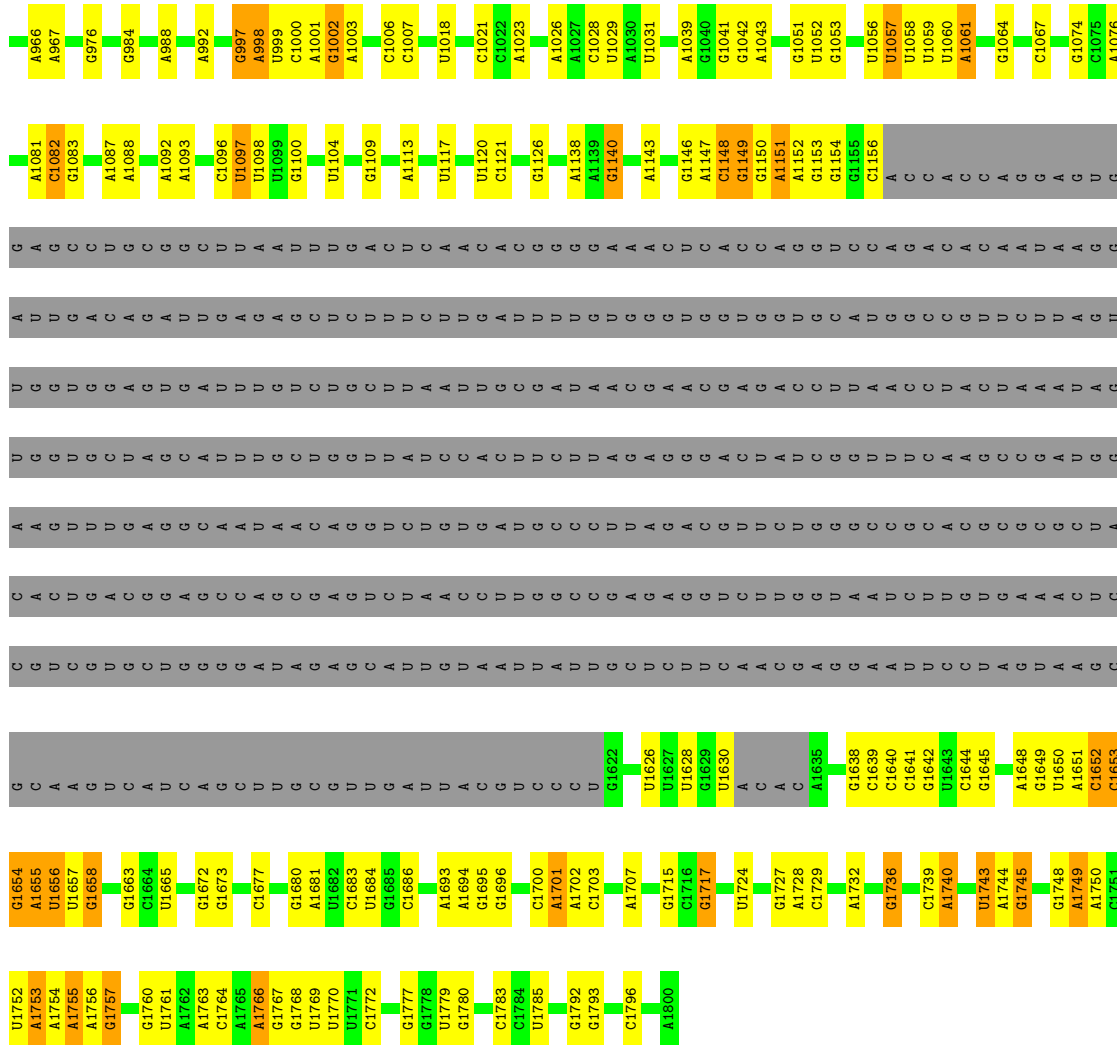
Mol	Chain	Residues	Atoms					AltConf	Trace
18	CB	35	Total	C	N	O	S	0	0
			302	189	69	43	1		

- Molecule 19 is a protein called Ribosome biogenesis protein TSR1.

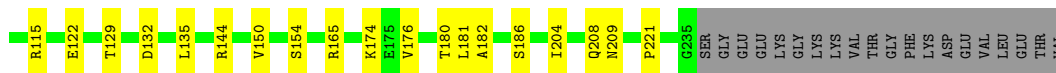
Mol	Chain	Residues	Atoms					AltConf	Trace
19	CC	615	Total	C	N	O	S	0	0
			4938	3162	867	896	13		

- Molecule 20 is ZINC ION (CCD ID: ZN) (formula: Zn).

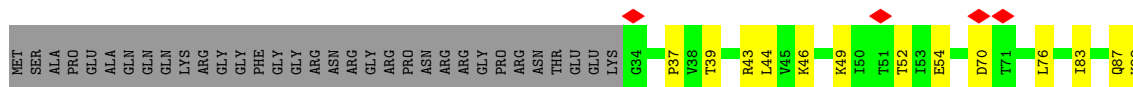
Mol	Chain	Residues	Atoms		AltConf
20	Sb	1	Total	Zn	0
			1	1	

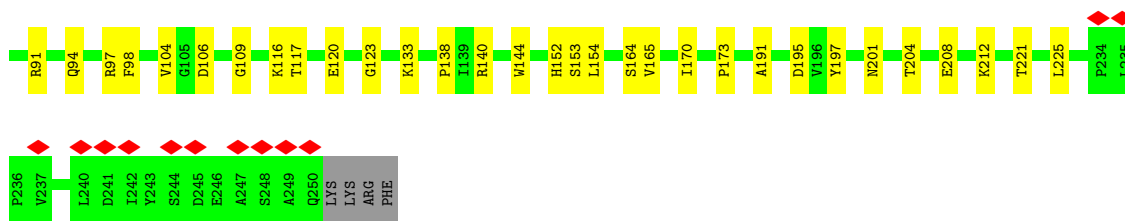


• Molecule 2: 40S ribosomal protein S1-A

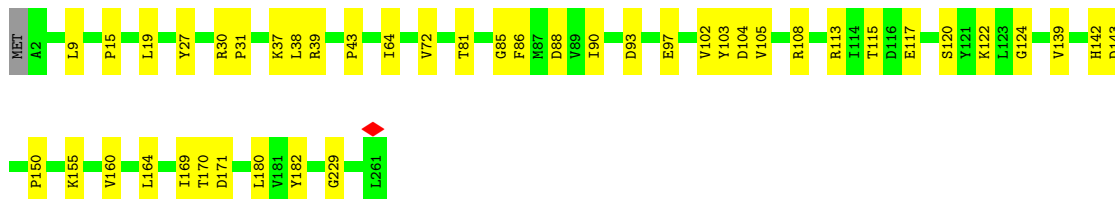
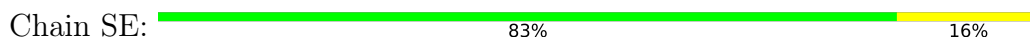


• Molecule 3: 40S ribosomal protein S2

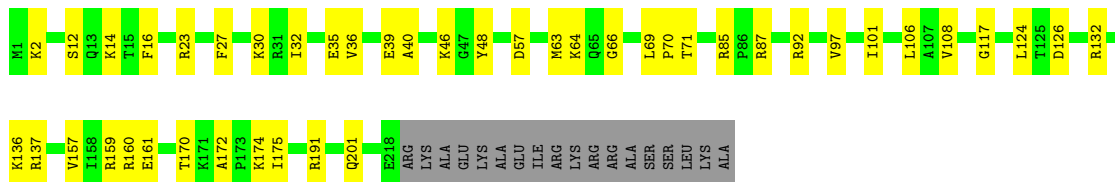
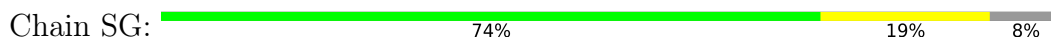




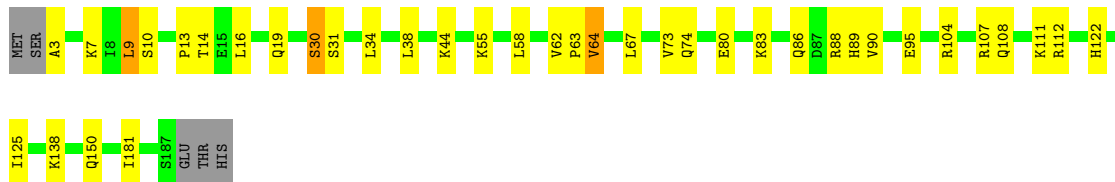
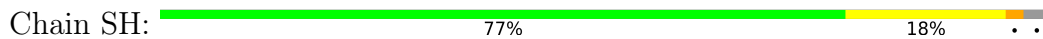
• Molecule 4: 40S ribosomal protein S4-A



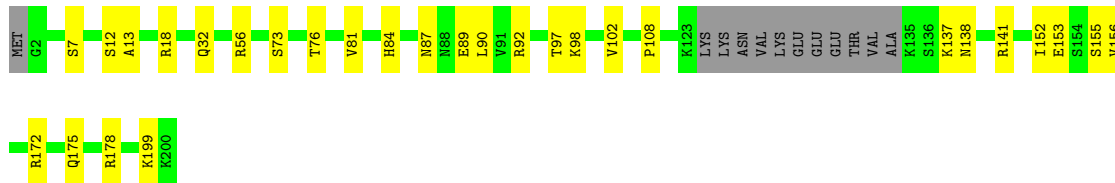
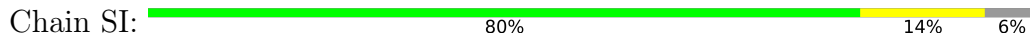
• Molecule 5: 40S ribosomal protein S6-A



• Molecule 6: 40S ribosomal protein S7-A

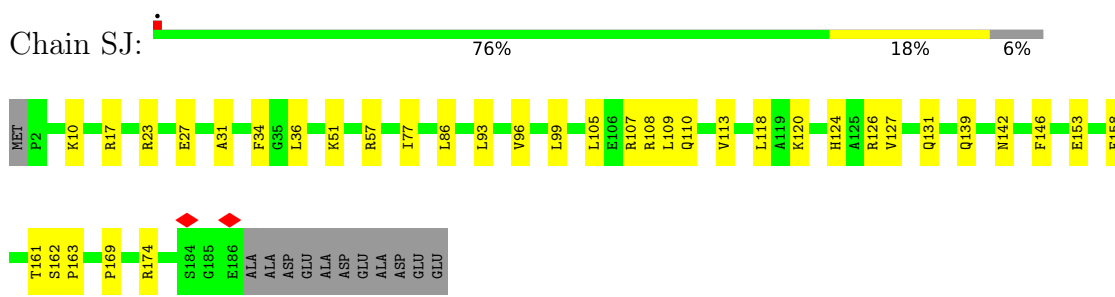


• Molecule 7: 40S ribosomal protein S8-A

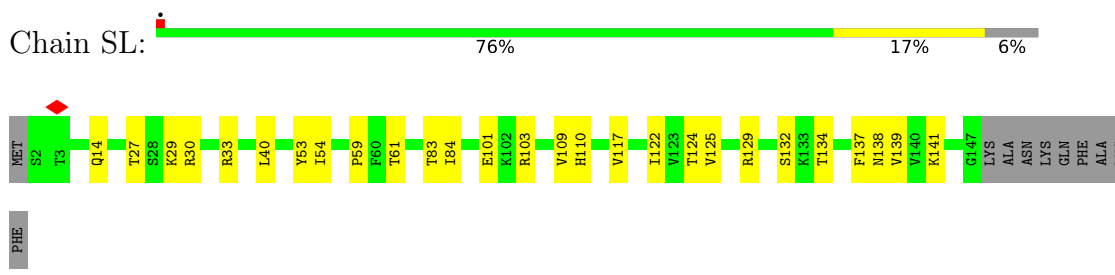


• Molecule 8: 40S ribosomal protein S9-A

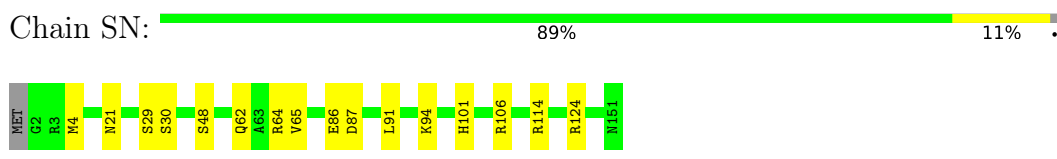




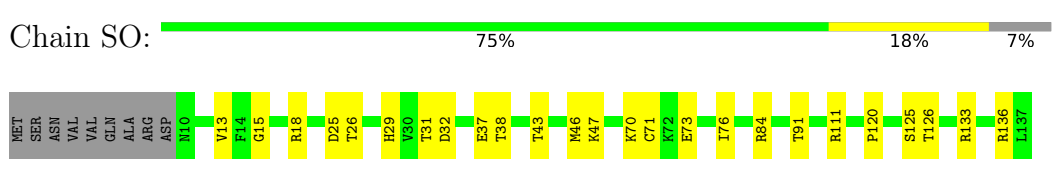
• Molecule 9: 40S ribosomal protein S11-A



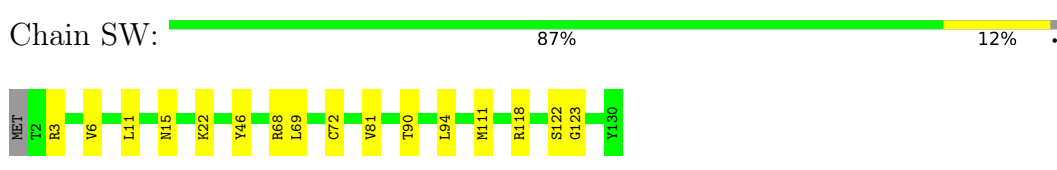
• Molecule 10: 40S ribosomal protein S13



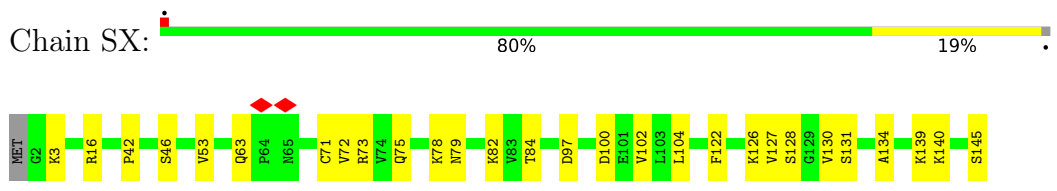
• Molecule 11: 40S ribosomal protein S14-A



• Molecule 12: 40S ribosomal protein S22-A

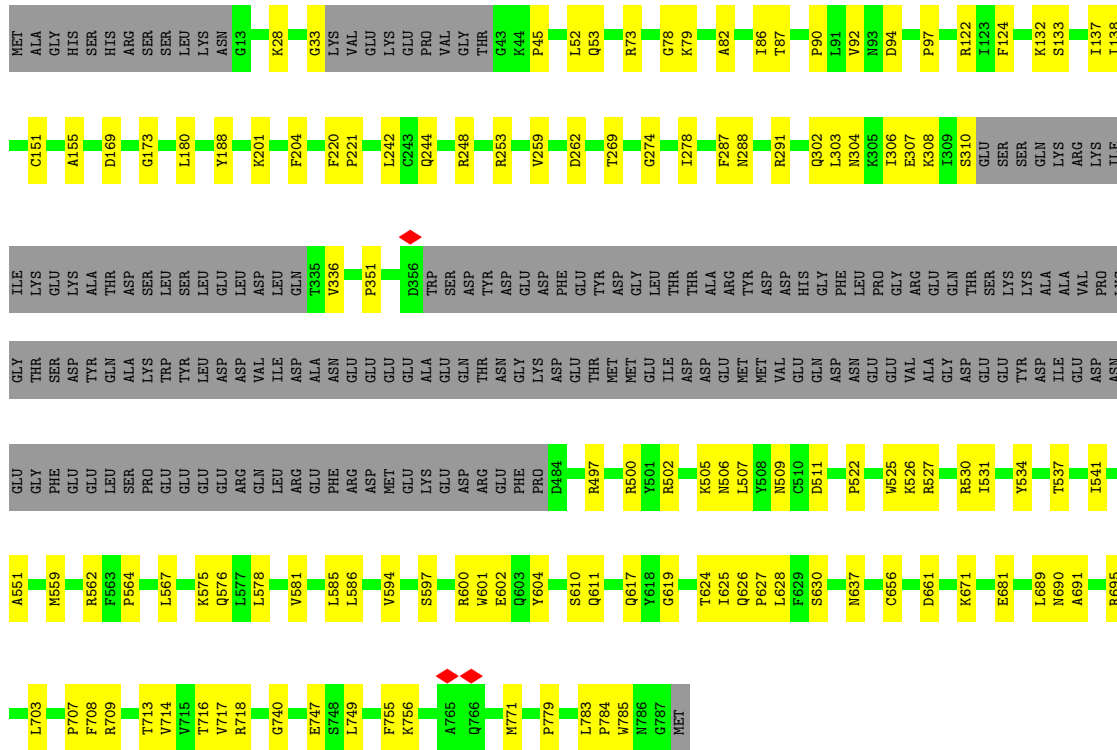


• Molecule 13: 40S ribosomal protein S23-A



• Molecule 14: 40S ribosomal protein S24-A

● Molecule 19: Ribosome biogenesis protein TSR1



4 Experimental information

Property	Value	Source
EM reconstruction method	SINGLE PARTICLE	Depositor
Imposed symmetry	POINT, Not provided	
Number of particles used	35400	Depositor
Resolution determination method	FSC 0.143 CUT-OFF	Depositor
CTF correction method	PHASE FLIPPING AND AMPLITUDE CORRECTION; Relion	Depositor
Microscope	FEI TITAN KRIOS	Depositor
Voltage (kV)	300	Depositor
Electron dose ($e^-/\text{\AA}^2$)	44	Depositor
Minimum defocus (nm)	800	Depositor
Maximum defocus (nm)	2500	Depositor
Magnification	Not provided	
Image detector	GATAN K2 SUMMIT (4k x 4k)	Depositor
Maximum map value	0.304	Depositor
Minimum map value	-0.183	Depositor
Average map value	0.000	Depositor
Map value standard deviation	0.007	Depositor
Recommended contour level	0.01	Depositor
Map size (Å)	381.24, 381.24, 381.24	wwPDB
Map dimensions	360, 360, 360	wwPDB
Map angles (°)	90.0, 90.0, 90.0	wwPDB
Pixel spacing (Å)	1.059, 1.059, 1.059	Depositor

5 Model quality i

5.1 Standard geometry i

Bond lengths and bond angles in the following residue types are not validated in this section:
ZN

The Z score for a bond length (or angle) is the number of standard deviations the observed value is removed from the expected value. A bond length (or angle) with $|Z| > 5$ is considered an outlier worth inspection. RMSZ is the root-mean-square of all Z scores of the bond lengths (or angles).

Mol	Chain	Bond lengths		Bond angles	
		RMSZ	# Z >5	RMSZ	# Z >5
1	C2	0.33	0/30957	0.39	0/48226
2	SB	0.32	0/1748	0.59	0/2352
3	SC	0.20	0/1665	0.47	1/2263 (0.0%)
4	SE	0.33	0/2109	0.56	0/2839
5	SG	0.24	0/1779	0.47	0/2379
6	SH	0.29	0/1511	0.69	2/2036 (0.1%)
7	SI	0.34	0/1514	0.52	0/2021
8	SJ	0.29	0/1519	0.53	0/2035
9	SL	0.39	0/1194	0.58	0/1610
10	SN	0.32	0/1215	0.53	0/1638
11	SO	0.28	0/960	0.66	1/1290 (0.1%)
12	SW	0.38	0/1038	0.48	0/1395
13	SX	0.34	0/1139	0.62	0/1518
14	SY	0.29	0/1087	0.68	3/1449 (0.2%)
15	Sb	0.28	0/620	0.60	0/838
16	Se	0.27	0/384	0.66	0/510
17	CA	0.26	0/1462	0.48	0/1969
18	CB	0.24	0/305	0.63	0/394
19	CC	0.17	0/5049	0.40	0/6817
All	All	0.31	0/57255	0.46	7/83579 (0.0%)

Chiral center outliers are detected by calculating the chiral volume of a chiral center and verifying if the center is modelled as a planar moiety or with the opposite hand. A planarity outlier is detected by checking planarity of atoms in a peptide group, atoms in a mainchain group or atoms of a sidechain that are expected to be planar.

Mol	Chain	#Chirality outliers	#Planarity outliers
6	SH	0	2
10	SN	0	1
13	SX	0	1
14	SY	0	2

Continued on next page...

Continued from previous page...

Mol	Chain	#Chirality outliers	#Planarity outliers
16	Se	0	1
All	All	0	7

There are no bond length outliers.

The worst 5 of 7 bond angle outliers are listed below:

Mol	Chain	Res	Type	Atoms	Z	Observed(°)	Ideal(°)
14	SY	49	LYS	CA-CB-CG	6.86	127.82	114.10
14	SY	48	TYR	CA-C-N	6.00	131.30	121.58
14	SY	48	TYR	C-N-CA	6.00	131.30	121.58
3	SC	138	PRO	CA-N-CD	-5.71	104.00	112.00
6	SH	30	SER	CA-C-N	5.63	131.84	121.70

There are no chirality outliers.

5 of 7 planarity outliers are listed below:

Mol	Chain	Res	Type	Group
6	SH	64	VAL	Peptide
6	SH	9	LEU	Peptide
10	SN	21	ASN	Peptide
13	SX	63	GLN	Peptide
14	SY	31	ASN	Peptide

5.2 Too-close contacts [i](#)

In the following table, the Non-H and H(model) columns list the number of non-hydrogen atoms and hydrogen atoms in the chain respectively. The H(added) column lists the number of hydrogen atoms added and optimized by MolProbity. The Clashes column lists the number of clashes within the asymmetric unit, whereas Symm-Clashes lists symmetry-related clashes.

Mol	Chain	Non-H	H(model)	H(added)	Clashes	Symm-Clashes
1	C2	27674	0	13920	267	0
2	SB	1722	0	1793	28	0
3	SC	1635	0	1723	26	0
4	SE	2068	0	2154	27	0
5	SG	1755	0	1846	28	0
6	SH	1486	0	1576	25	0
7	SI	1489	0	1525	20	0
8	SJ	1494	0	1573	27	0
9	SL	1168	0	1233	16	0

Continued on next page...

Continued from previous page...

Mol	Chain	Non-H	H(model)	H(added)	Clashes	Symm-Clashes
10	SN	1192	0	1255	12	0
11	SO	949	0	985	19	0
12	SW	1021	0	1060	11	0
13	SX	1121	0	1196	19	0
14	SY	1073	0	1132	14	0
15	Sb	610	0	632	9	0
16	Se	378	0	413	5	0
17	CA	1436	0	1515	24	0
18	CB	302	0	340	10	0
19	CC	4938	0	4909	74	0
20	Sb	1	0	0	0	0
All	All	53512	0	40780	584	0

The all-atom clashscore is defined as the number of clashes found per 1000 atoms (including hydrogen atoms). The all-atom clashscore for this structure is 6.

The worst 5 of 584 close contacts within the same asymmetric unit are listed below, sorted by their clash magnitude.

Atom-1	Atom-2	Interatomic distance (Å)	Clash overlap (Å)
1:C2:704:C:N4	1:C2:734:A:H61	1.51	1.09
1:C2:704:C:H42	1:C2:734:A:N6	1.50	1.07
1:C2:717:C:H42	1:C2:720:G:H22	1.14	0.94
1:C2:1677:C:H42	1:C2:1724:U:H3	1.04	0.93
1:C2:717:C:N4	1:C2:720:G:H22	1.69	0.90

There are no symmetry-related clashes.

5.3 Torsion angles [i](#)

5.3.1 Protein backbone [i](#)

In the following table, the Percentiles column shows the percent Ramachandran outliers of the chain as a percentile score with respect to all PDB entries followed by that with respect to all EM entries.

The Analysed column shows the number of residues for which the backbone conformation was analysed, and the total number of residues.

Mol	Chain	Analysed	Favoured	Allowed	Outliers	Percentiles
2	SB	214/255 (84%)	199 (93%)	15 (7%)	0	100 100

Continued on next page...

Continued from previous page...

Mol	Chain	Analysed	Favoured	Allowed	Outliers	Percentiles	
3	SC	215/254 (85%)	202 (94%)	13 (6%)	0	100	100
4	SE	258/261 (99%)	234 (91%)	24 (9%)	0	100	100
5	SG	216/236 (92%)	205 (95%)	11 (5%)	0	100	100
6	SH	183/190 (96%)	162 (88%)	21 (12%)	0	100	100
7	SI	184/200 (92%)	174 (95%)	10 (5%)	0	100	100
8	SJ	183/197 (93%)	171 (93%)	12 (7%)	0	100	100
9	SL	144/156 (92%)	125 (87%)	18 (12%)	1 (1%)	18	51
10	SN	148/151 (98%)	130 (88%)	18 (12%)	0	100	100
11	SO	126/137 (92%)	114 (90%)	12 (10%)	0	100	100
12	SW	127/130 (98%)	122 (96%)	5 (4%)	0	100	100
13	SX	142/145 (98%)	129 (91%)	13 (9%)	0	100	100
14	SY	132/135 (98%)	117 (89%)	13 (10%)	2 (2%)	8	37
15	Sb	79/82 (96%)	69 (87%)	10 (13%)	0	100	100
16	Se	43/63 (68%)	37 (86%)	6 (14%)	0	100	100
17	CA	179/274 (65%)	169 (94%)	10 (6%)	0	100	100
18	CB	33/275 (12%)	31 (94%)	2 (6%)	0	100	100
19	CC	607/788 (77%)	588 (97%)	19 (3%)	0	100	100
All	All	3213/3929 (82%)	2978 (93%)	232 (7%)	3 (0%)	49	79

All (3) Ramachandran outliers are listed below:

Mol	Chain	Res	Type
9	SL	61	THR
14	SY	32	ARG
14	SY	52	LYS

5.3.2 Protein sidechains [i](#)

In the following table, the Percentiles column shows the percent sidechain outliers of the chain as a percentile score with respect to all PDB entries followed by that with respect to all EM entries.

The Analysed column shows the number of residues for which the sidechain conformation was analysed, and the total number of residues.

Mol	Chain	Analysed	Rotameric	Outliers	Percentiles	
2	SB	192/224 (86%)	192 (100%)	0	100	100
3	SC	176/205 (86%)	176 (100%)	0	100	100
4	SE	221/222 (100%)	221 (100%)	0	100	100
5	SG	187/201 (93%)	187 (100%)	0	100	100
6	SH	165/170 (97%)	165 (100%)	0	100	100
7	SI	150/161 (93%)	150 (100%)	0	100	100
8	SJ	158/166 (95%)	158 (100%)	0	100	100
9	SL	129/137 (94%)	129 (100%)	0	100	100
10	SN	127/128 (99%)	127 (100%)	0	100	100
11	SO	97/105 (92%)	97 (100%)	0	100	100
12	SW	110/111 (99%)	110 (100%)	0	100	100
13	SX	119/120 (99%)	119 (100%)	0	100	100
14	SY	112/113 (99%)	112 (100%)	0	100	100
15	Sb	70/71 (99%)	70 (100%)	0	100	100
16	Se	40/54 (74%)	40 (100%)	0	100	100
17	CA	158/238 (66%)	158 (100%)	0	100	100
18	CB	31/233 (13%)	31 (100%)	0	100	100
19	CC	532/703 (76%)	532 (100%)	0	100	100
All	All	2774/3362 (82%)	2774 (100%)	0	100	100

There are no protein residues with a non-rotameric sidechain to report.

Sometimes sidechains can be flipped to improve hydrogen bonding and reduce clashes. 5 of 28 such sidechains are listed below:

Mol	Chain	Res	Type
12	SW	66	ASN
19	CC	711	HIS
14	SY	110	GLN
19	CC	290	ASN
14	SY	22	GLN

5.3.3 RNA [i](#)

Mol	Chain	Analysed	Backbone Outliers	Pucker Outliers
1	C2	1292/1800 (71%)	334 (25%)	14 (1%)

5 of 334 RNA backbone outliers are listed below:

Mol	Chain	Res	Type
1	C2	2	A
1	C2	4	C
1	C2	6	G
1	C2	9	U
1	C2	11	A

5 of 14 RNA pucker outliers are listed below:

Mol	Chain	Res	Type
1	C2	555	A
1	C2	755	A
1	C2	1652	C
1	C2	1051	G
1	C2	1097	U

5.4 Non-standard residues in protein, DNA, RNA chains [i](#)

There are no non-standard protein/DNA/RNA residues in this entry.

5.5 Carbohydrates [i](#)

There are no oligosaccharides in this entry.

5.6 Ligand geometry [i](#)

Of 1 ligands modelled in this entry, 1 is monoatomic - leaving 0 for Mogul analysis.

There are no bond length outliers.

There are no bond angle outliers.

There are no chirality outliers.

There are no torsion outliers.

There are no ring outliers.

No monomer is involved in short contacts.

5.7 Other polymers [i](#)

There are no such residues in this entry.

5.8 Polymer linkage issues

There are no chain breaks in this entry.

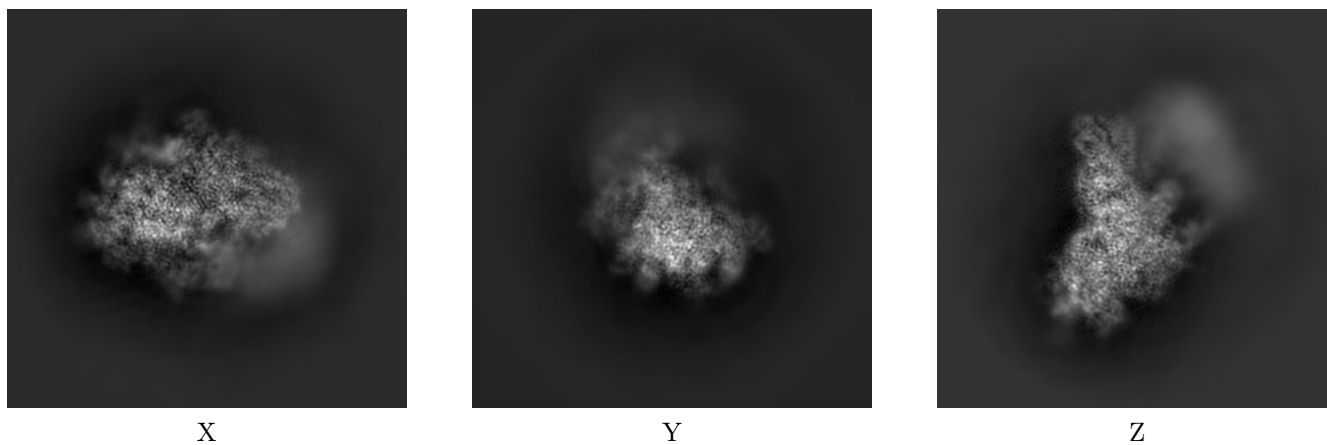
6 Map visualisation [i](#)

This section contains visualisations of the EMDB entry EMD-32796. These allow visual inspection of the internal detail of the map and identification of artifacts.

No raw map or half-maps were deposited for this entry and therefore no images, graphs, etc. pertaining to the raw map can be shown.

6.1 Orthogonal projections [i](#)

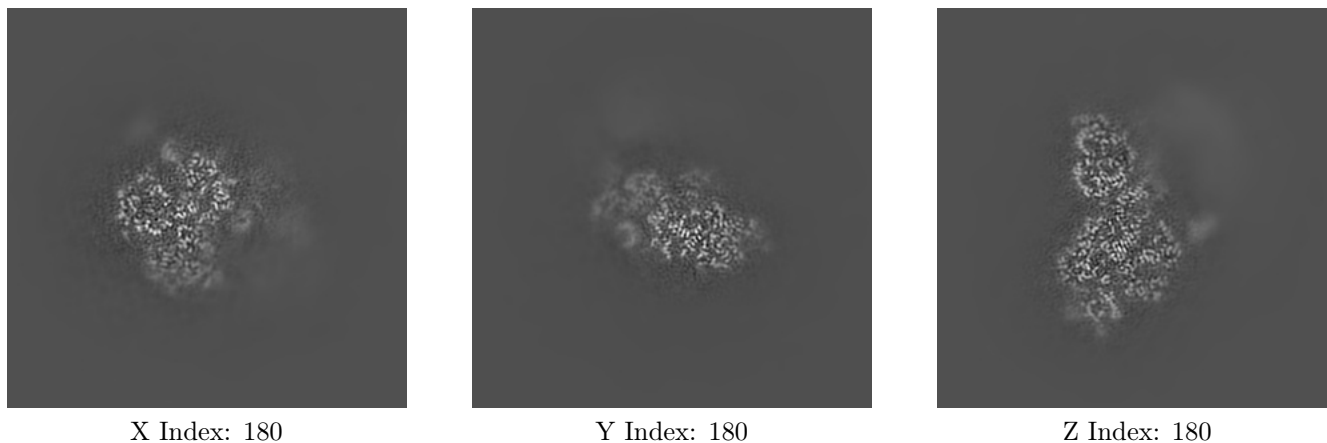
6.1.1 Primary map



The images above show the map projected in three orthogonal directions.

6.2 Central slices [i](#)

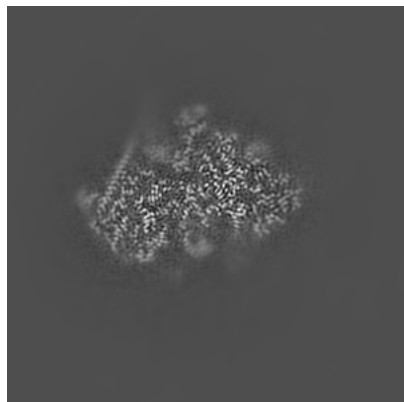
6.2.1 Primary map



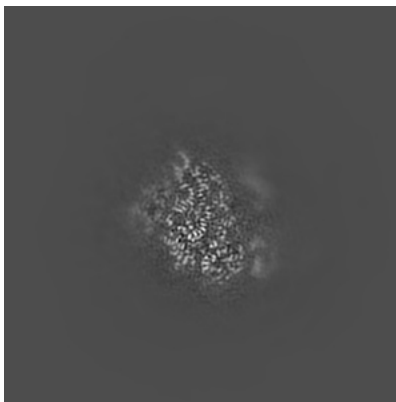
The images above show central slices of the map in three orthogonal directions.

6.3 Largest variance slices [i](#)

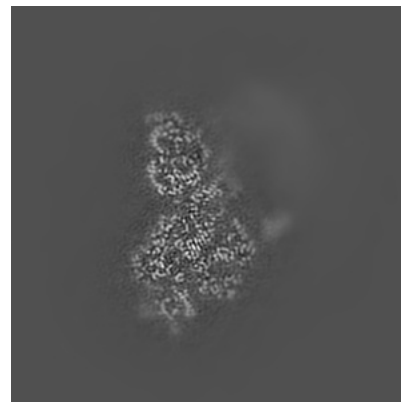
6.3.1 Primary map



X Index: 147



Y Index: 138

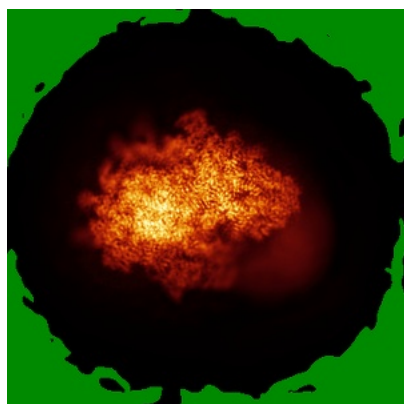


Z Index: 180

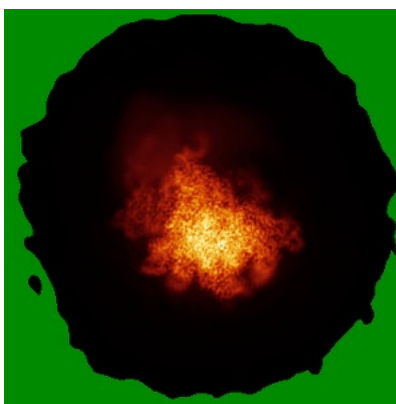
The images above show the largest variance slices of the map in three orthogonal directions.

6.4 Orthogonal standard-deviation projections (False-color) [i](#)

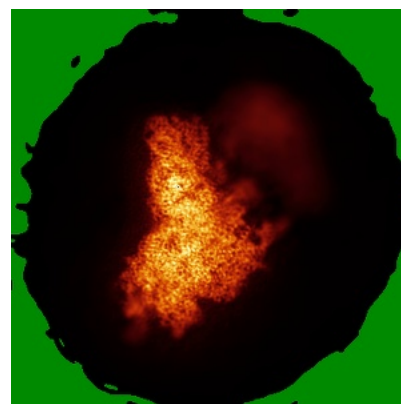
6.4.1 Primary map



X



Y

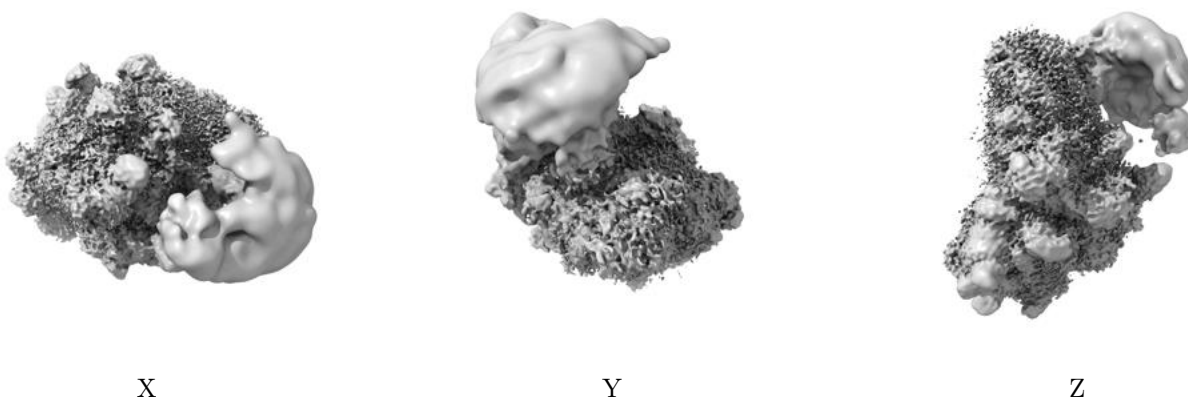


Z

The images above show the map standard deviation projections with false color in three orthogonal directions. Minimum values are shown in green, max in blue, and dark to light orange shades represent small to large values respectively.

6.5 Orthogonal surface views [i](#)

6.5.1 Primary map



The images above show the 3D surface view of the map at the recommended contour level 0.01. These images, in conjunction with the slice images, may facilitate assessment of whether an appropriate contour level has been provided.

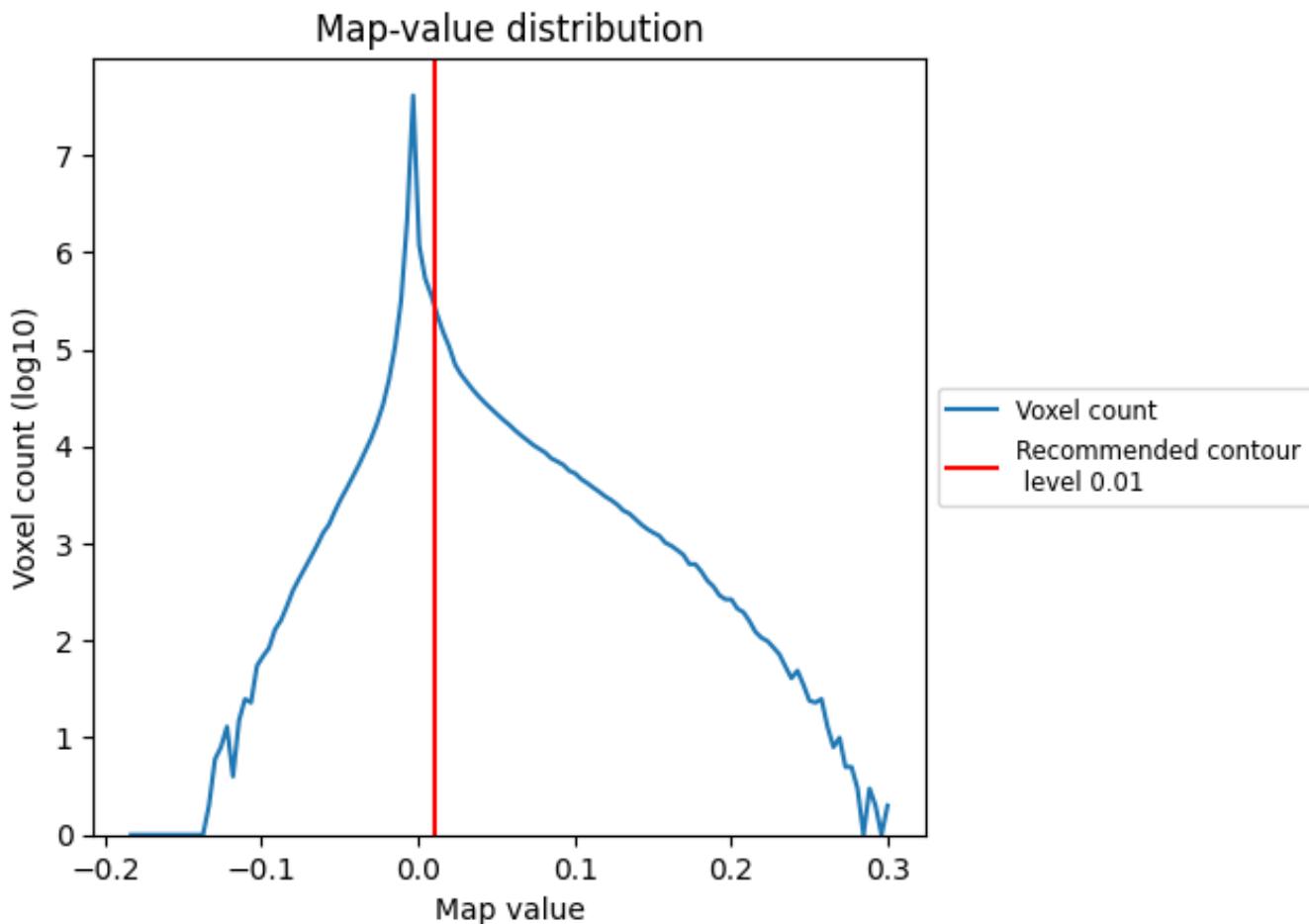
6.6 Mask visualisation [i](#)

This section was not generated. No masks/segmentation were deposited.

7 Map analysis [i](#)

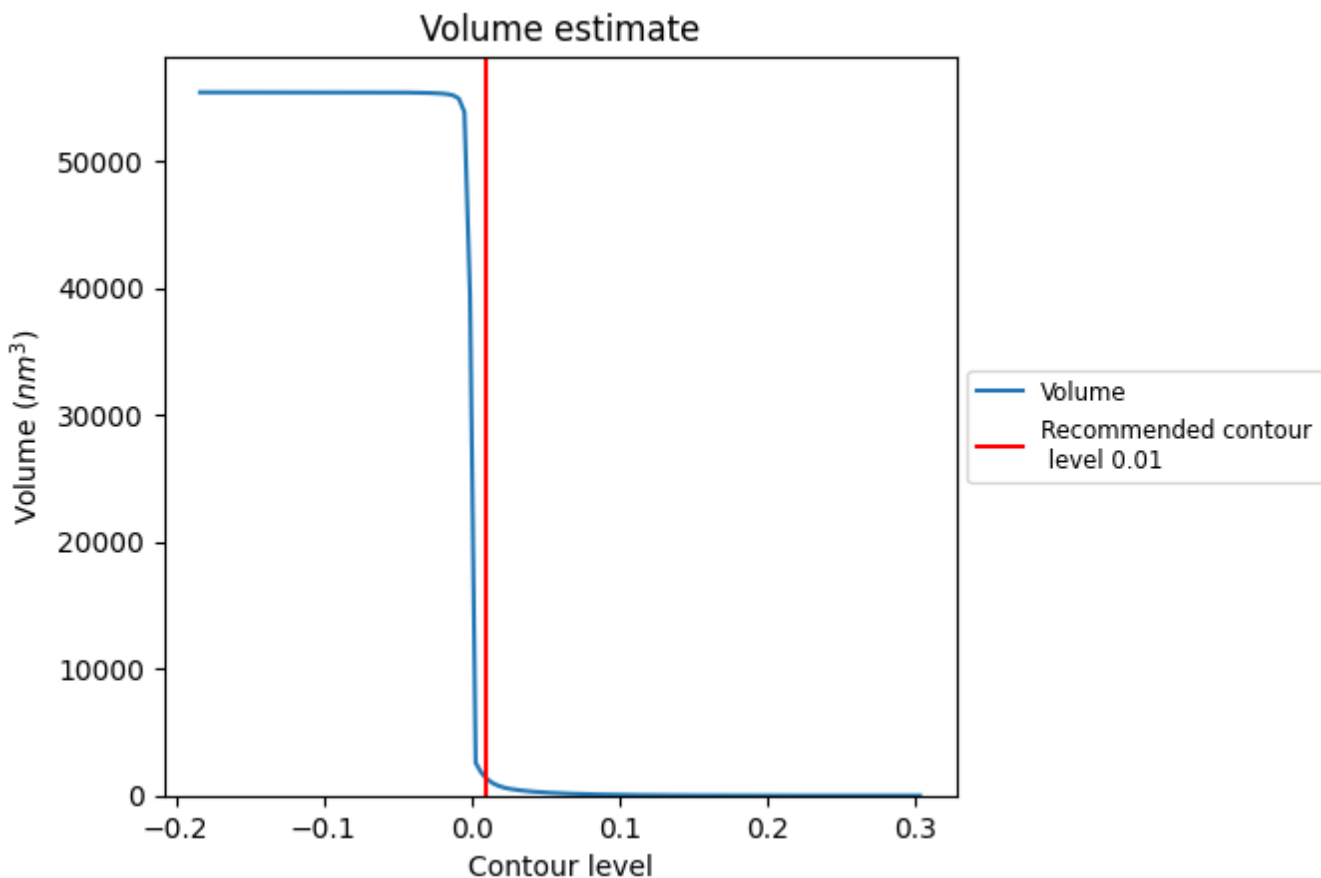
This section contains the results of statistical analysis of the map.

7.1 Map-value distribution [i](#)



The map-value distribution is plotted in 128 intervals along the x-axis. The y-axis is logarithmic. A spike in this graph at zero usually indicates that the volume has been masked.

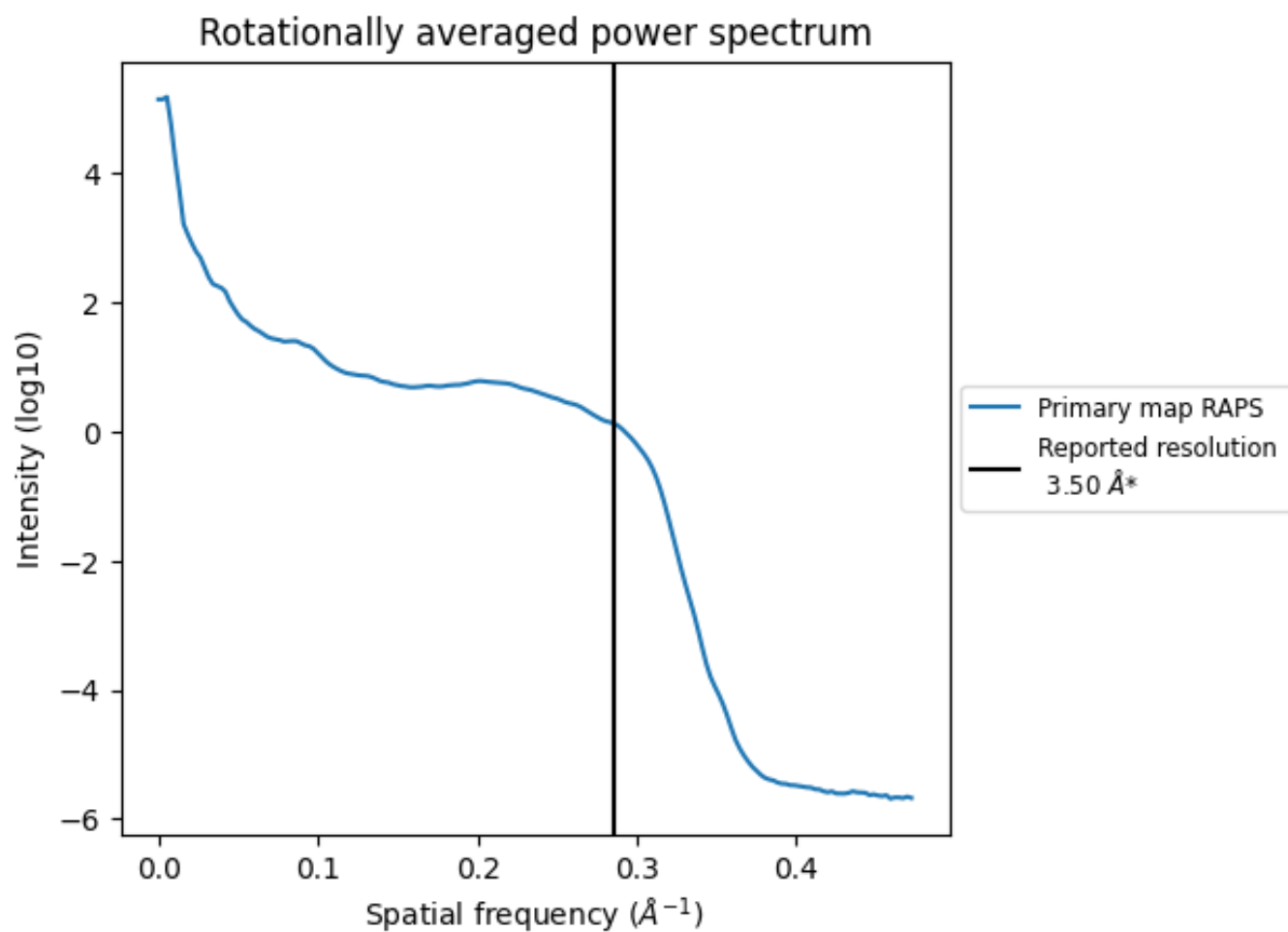
7.2 Volume estimate [i](#)



The volume at the recommended contour level is 1400 nm³; this corresponds to an approximate mass of 1264 kDa.

The volume estimate graph shows how the enclosed volume varies with the contour level. The recommended contour level is shown as a vertical line and the intersection between the line and the curve gives the volume of the enclosed surface at the given level.

7.3 Rotationally averaged power spectrum [i](#)

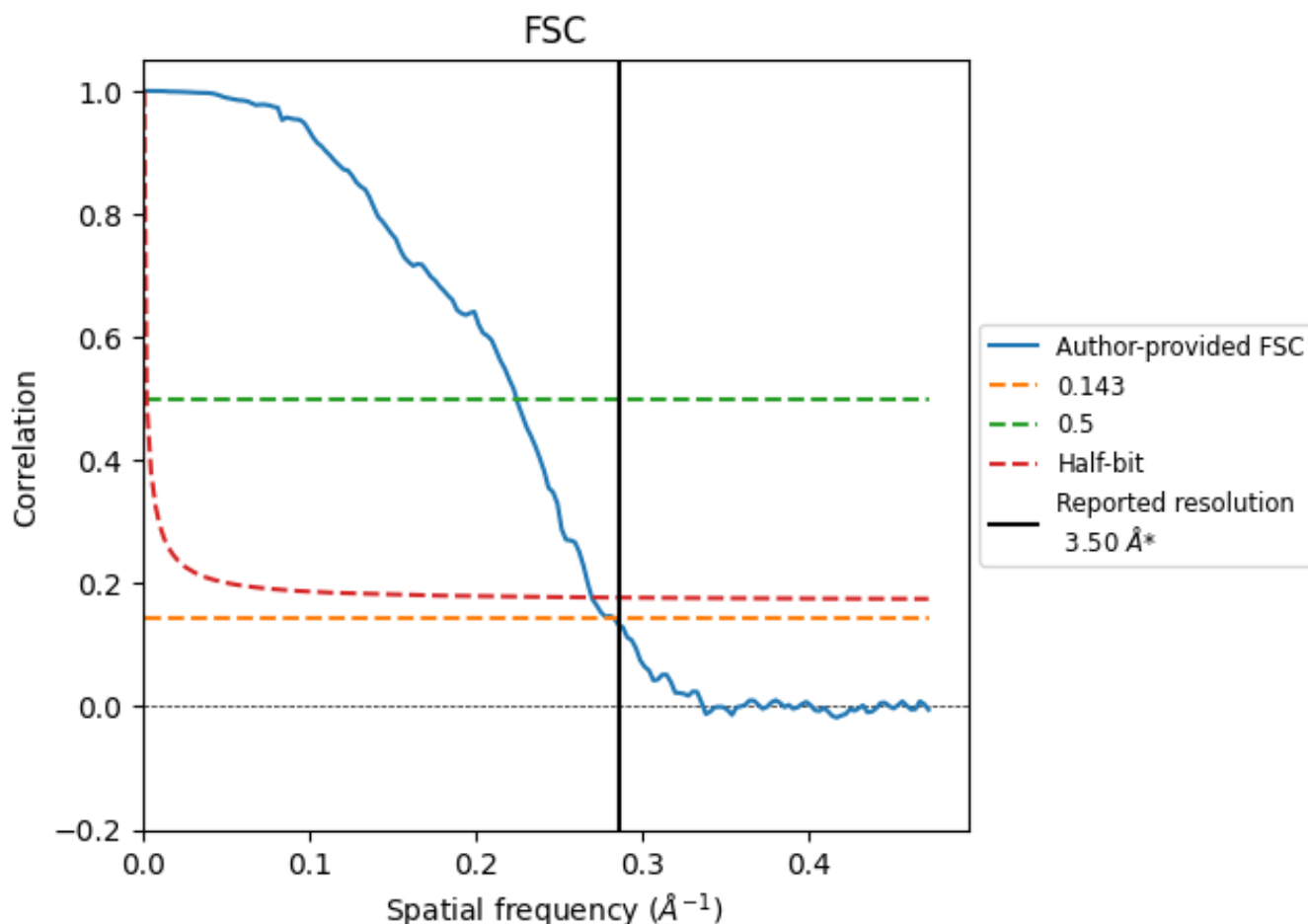


*Reported resolution corresponds to spatial frequency of 0.286\AA^{-1}

8 Fourier-Shell correlation [i](#)

Fourier-Shell Correlation (FSC) is the most commonly used method to estimate the resolution of single-particle and subtomogram-averaged maps. The shape of the curve depends on the imposed symmetry, mask and whether or not the two 3D reconstructions used were processed from a common reference. The reported resolution is shown as a black line. A curve is displayed for the half-bit criterion in addition to lines showing the 0.143 gold standard cut-off and 0.5 cut-off.

8.1 FSC [i](#)



*Reported resolution corresponds to spatial frequency of 0.286 Å⁻¹

8.2 Resolution estimates [i](#)

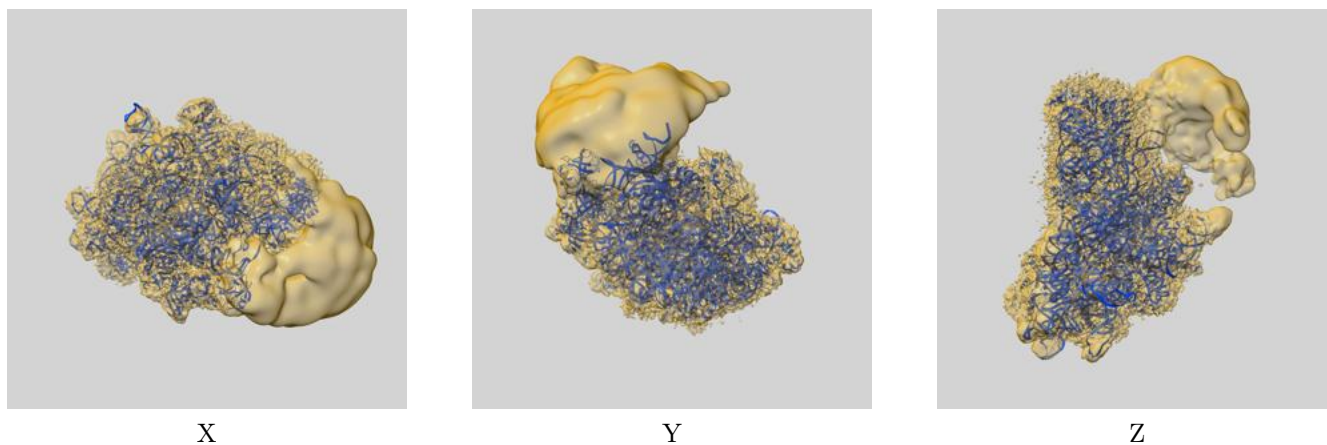
Resolution estimate (Å)	Estimation criterion (FSC cut-off)		
	0.143	0.5	Half-bit
Reported by author	3.50	-	-
Author-provided FSC curve	3.53	4.45	3.71
Unmasked-calculated*	-	-	-

*Resolution estimate based on FSC curve calculated by comparison of deposited half-maps.

9 Map-model fit [i](#)

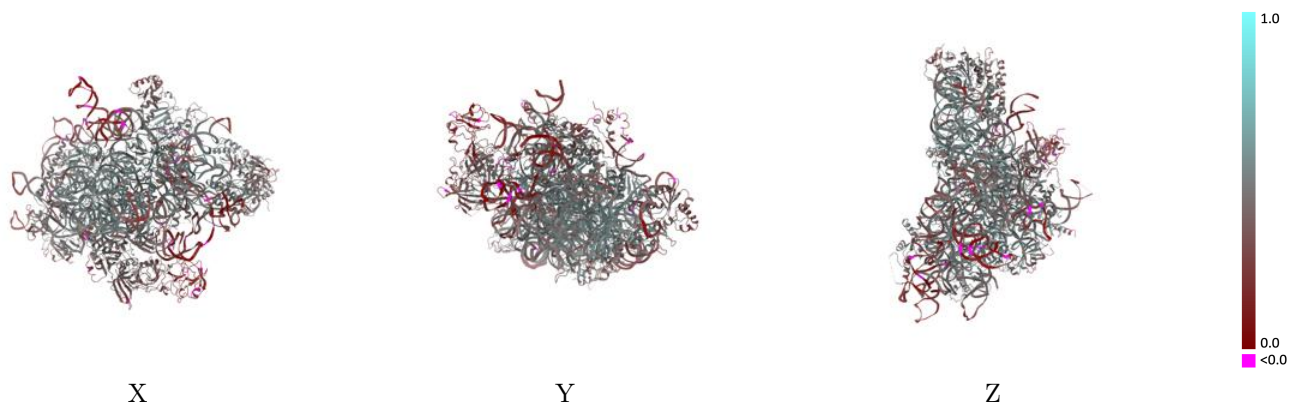
This section contains information regarding the fit between EMDB map EMD-32796 and PDB model 7WTR. Per-residue inclusion information can be found in section 3 on page 7.

9.1 Map-model overlay [i](#)



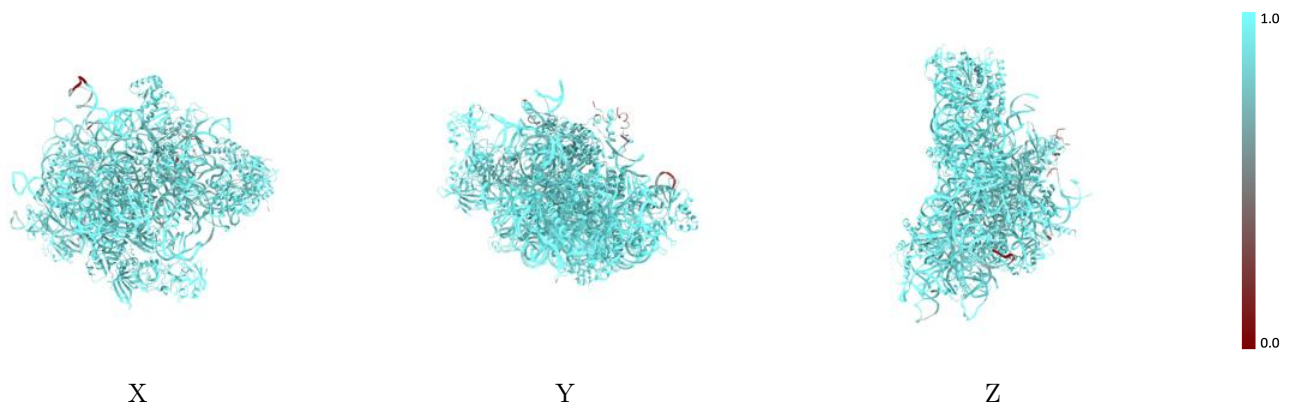
The images above show the 3D surface view of the map at the recommended contour level 0.01 at 50% transparency in yellow overlaid with a ribbon representation of the model coloured in blue. These images allow for the visual assessment of the quality of fit between the atomic model and the map.

9.2 Q-score mapped to coordinate model [i](#)



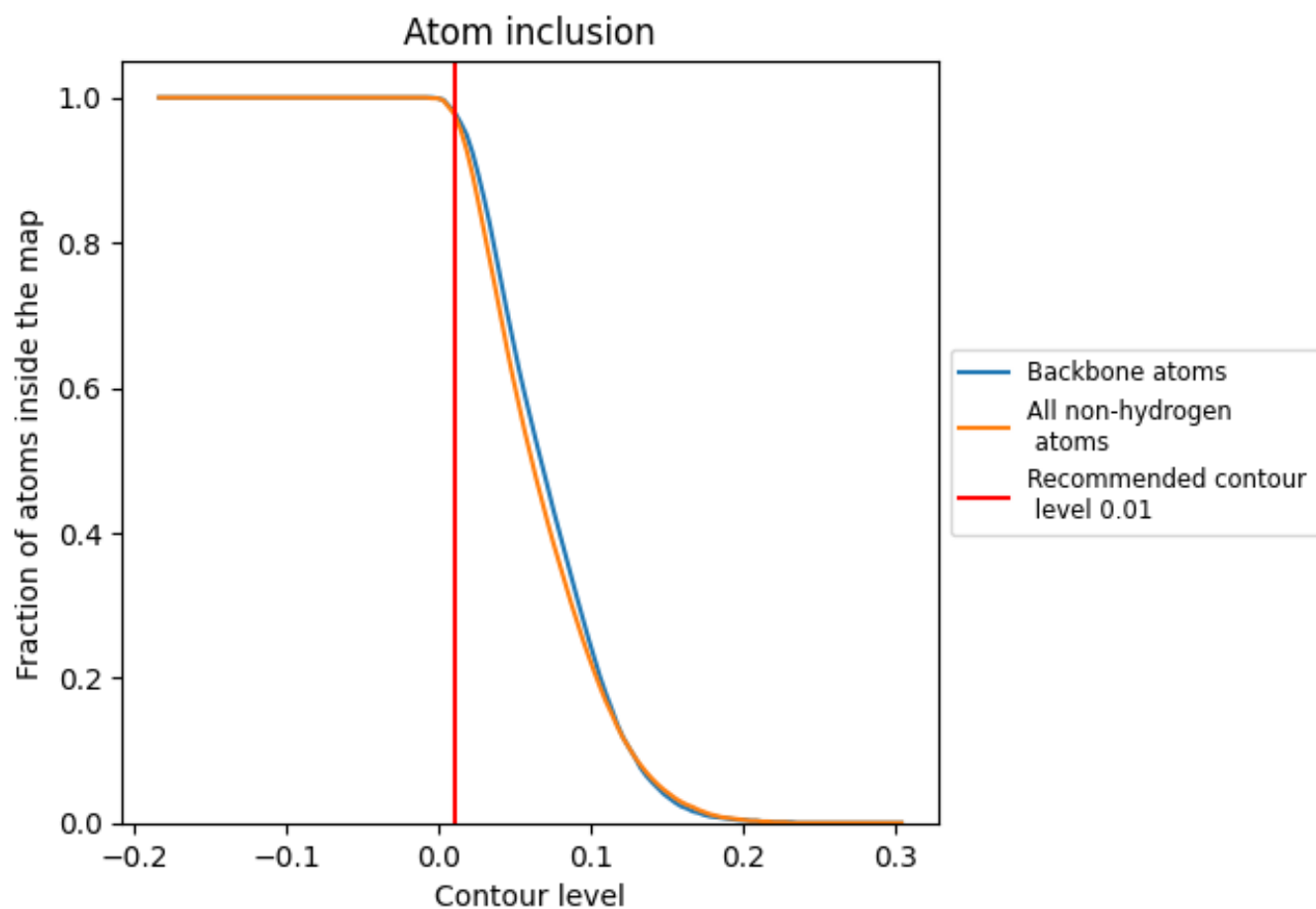
The images above show the model with each residue coloured according its Q-score. This shows their resolvability in the map with higher Q-score values reflecting better resolvability. Please note: Q-score is calculating the resolvability of atoms, and thus high values are only expected at resolutions at which atoms can be resolved. Low Q-score values may therefore be expected for many entries.

9.3 Atom inclusion mapped to coordinate model [i](#)



The images above show the model with each residue coloured according to its atom inclusion. This shows to what extent they are inside the map at the recommended contour level (0.01).





















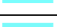

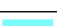

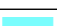



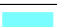











9.4 Atom inclusion [i](#)



At the recommended contour level, 98% of all backbone atoms, 98% of all non-hydrogen atoms, are inside the map.

9.5 Map-model fit summary

The table lists the average atom inclusion at the recommended contour level (0.01) and Q-score for the entire model and for each chain.

Chain	Atom inclusion	Q-score
All	 0.9780	 0.4350
C2	 0.9820	 0.4290
CA	 0.9830	 0.4310
CB	 0.9720	 0.3910
CC	 0.9770	 0.3480
SB	 0.9760	 0.4670
SC	 0.8550	 0.3480
SE	 0.9910	 0.5240
SG	 0.9970	 0.4390
SH	 0.9900	 0.4000
SI	 0.9940	 0.5040
SJ	 0.9830	 0.4890
SL	 0.9890	 0.5340
SN	 0.9960	 0.5090
SO	 0.9670	 0.4570
SW	 0.9960	 0.5380
SX	 0.9630	 0.4640
SY	 0.9880	 0.4770
Sb	 0.9780	 0.4730
Se	 0.8070	 0.3780

