



wwPDB X-ray Structure Validation Summary Report ⓘ

Mar 29, 2026 – 09:45 PM UTC

PDB ID : 4XCS / pdb_00004xcs
Title : Human peroxiredoxin-1 C83S mutant
Authors : Cho, K.J.; Lee, J.-H.; Khan, T.G.; Park, Y.; Cho, A.; Chang, T.-S.; Kim, K.H.
Deposited on : 2014-12-18
Resolution : 2.10 Å(reported)

This is a wwPDB X-ray Structure Validation Summary Report for a publicly released PDB entry.

We welcome your comments at validation@mail.wwpdb.org

A user guide is available at

<https://www.wwpdb.org/validation/2017/XrayValidationReportHelp>

with specific help available everywhere you see the ⓘ symbol.

The types of validation reports are described at

<http://www.wwpdb.org/validation/2017/FAQs#types>.

The following versions of software and data (see [references ⓘ](#)) were used in the production of this report:

MolProbity : 4-5-2 with Phenix2.0
Mogul : 2022.3.0, CSD as543be (2022)
Xtrriage (Phenix) : 2.0
EDS : 3.0
Buster-report : wwPDB partial adaption of 1.1.7 (2018)
Percentile statistics : 20250101.v01 (using entries in the PDB archive January 1st 2025)
CCP4 : 9.0.010 (Gargrove)
Density-Fitness : 1.0.12
Ideal geometry (proteins) : Engh & Huber (2001)
Ideal geometry (DNA, RNA) : Parkinson et al. (1996)
Validation Pipeline (wwPDB-VP) : 2.49

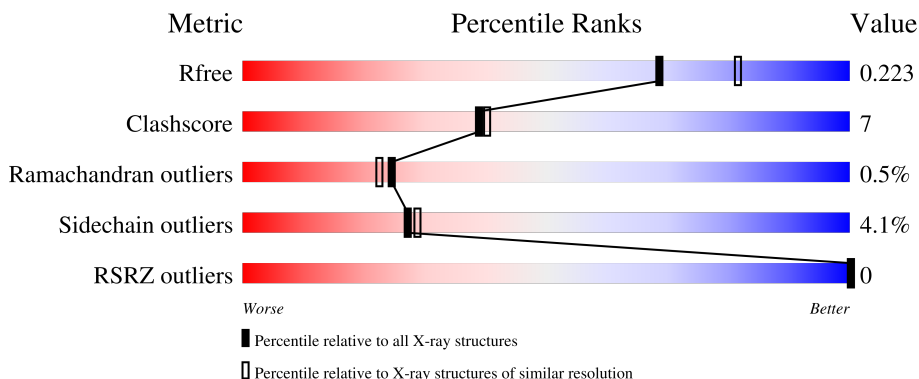
1 Overall quality at a glance

The following experimental techniques were used to determine the structure:

X-RAY DIFFRACTION

The reported resolution of this entry is 2.10 Å.

Percentile scores (ranging between 0-100) for global validation metrics of the entry are shown in the following graphic. The table shows the number of entries on which the scores are based.




Metric	Whole archive (#Entries)	Similar resolution (#Entries, resolution range(Å))
R_{free}	180053	6658 (2.10-2.10)
Clashscore	190562	7164 (2.10-2.10)
Ramachandran outliers	187476	7099 (2.10-2.10)
Sidechain outliers	187428	7100 (2.10-2.10)
RSRZ outliers	180081	6662 (2.10-2.10)

The table below summarises the geometric issues observed across the polymeric chains and their fit to the electron density. The red, orange, yellow and green segments of the lower bar indicate the fraction of residues that contain outliers for ≥ 3 , 2, 1 and 0 types of geometric quality criteria respectively. A grey segment represents the fraction of residues that are not modelled. The numeric value for each fraction is indicated below the corresponding segment, with a dot representing fractions $\leq 5\%$. The upper red bar (where present) indicates the fraction of residues that have poor fit to the electron density. The numeric value is given above the bar.

Mol	Chain	Length	Quality of chain
1	A	219	 63% 14% 18%
1	B	219	 72% 7% 20%
1	C	219	 67% 13% 18%
1	D	219	 66% 12% 20%
1	E	219	 68% 9% 19%

Continued on next page...

Continued from previous page...

Mol	Chain	Length	Quality of chain
1	F	219	 66% 13% 18%

2 Entry composition [i](#)

There are 4 unique types of molecules in this entry. The entry contains 8912 atoms, of which 0 are hydrogens and 0 are deuteriums.

In the tables below, the ZeroOcc column contains the number of atoms modelled with zero occupancy, the AltConf column contains the number of residues with at least one atom in alternate conformation and the Trace column contains the number of residues modelled with at most 2 atoms.

- Molecule 1 is a protein called Peroxiredoxin-1.

Mol	Chain	Residues	Atoms					ZeroOcc	AltConf	Trace
			Total	C	N	O	S			
1	A	179	1393	895	235	257	6	0	1	0
1	B	176	1401	910	232	254	5	0	4	0
1	C	179	1387	891	234	256	6	0	0	0
1	D	176	1398	905	235	253	5	0	3	0
1	E	177	1400	904	234	257	5	0	3	0
1	F	179	1390	893	234	257	6	0	1	0

There are 126 discrepancies between the modelled and reference sequences:

Chain	Residue	Modelled	Actual	Comment	Reference
A	-19	MET	-	expression tag	UNP Q06830
A	-18	GLY	-	expression tag	UNP Q06830
A	-17	SER	-	expression tag	UNP Q06830
A	-16	SER	-	expression tag	UNP Q06830
A	-15	HIS	-	expression tag	UNP Q06830
A	-14	HIS	-	expression tag	UNP Q06830
A	-13	HIS	-	expression tag	UNP Q06830
A	-12	HIS	-	expression tag	UNP Q06830
A	-11	HIS	-	expression tag	UNP Q06830
A	-10	HIS	-	expression tag	UNP Q06830
A	-9	SER	-	expression tag	UNP Q06830
A	-8	SER	-	expression tag	UNP Q06830
A	-7	GLY	-	expression tag	UNP Q06830
A	-6	LEU	-	expression tag	UNP Q06830
A	-5	VAL	-	expression tag	UNP Q06830
A	-4	PRO	-	expression tag	UNP Q06830
A	-3	ARG	-	expression tag	UNP Q06830

Continued on next page...

Continued from previous page...

Chain	Residue	Modelled	Actual	Comment	Reference
A	-2	GLY	-	expression tag	UNP Q06830
A	-1	SER	-	expression tag	UNP Q06830
A	0	HIS	-	expression tag	UNP Q06830
A	83	SER	CYS	engineered mutation	UNP Q06830
B	-19	MET	-	expression tag	UNP Q06830
B	-18	GLY	-	expression tag	UNP Q06830
B	-17	SER	-	expression tag	UNP Q06830
B	-16	SER	-	expression tag	UNP Q06830
B	-15	HIS	-	expression tag	UNP Q06830
B	-14	HIS	-	expression tag	UNP Q06830
B	-13	HIS	-	expression tag	UNP Q06830
B	-12	HIS	-	expression tag	UNP Q06830
B	-11	HIS	-	expression tag	UNP Q06830
B	-10	HIS	-	expression tag	UNP Q06830
B	-9	SER	-	expression tag	UNP Q06830
B	-8	SER	-	expression tag	UNP Q06830
B	-7	GLY	-	expression tag	UNP Q06830
B	-6	LEU	-	expression tag	UNP Q06830
B	-5	VAL	-	expression tag	UNP Q06830
B	-4	PRO	-	expression tag	UNP Q06830
B	-3	ARG	-	expression tag	UNP Q06830
B	-2	GLY	-	expression tag	UNP Q06830
B	-1	SER	-	expression tag	UNP Q06830
B	0	HIS	-	expression tag	UNP Q06830
B	83	SER	CYS	engineered mutation	UNP Q06830
C	-19	MET	-	expression tag	UNP Q06830
C	-18	GLY	-	expression tag	UNP Q06830
C	-17	SER	-	expression tag	UNP Q06830
C	-16	SER	-	expression tag	UNP Q06830
C	-15	HIS	-	expression tag	UNP Q06830
C	-14	HIS	-	expression tag	UNP Q06830
C	-13	HIS	-	expression tag	UNP Q06830
C	-12	HIS	-	expression tag	UNP Q06830
C	-11	HIS	-	expression tag	UNP Q06830
C	-10	HIS	-	expression tag	UNP Q06830
C	-9	SER	-	expression tag	UNP Q06830
C	-8	SER	-	expression tag	UNP Q06830
C	-7	GLY	-	expression tag	UNP Q06830
C	-6	LEU	-	expression tag	UNP Q06830
C	-5	VAL	-	expression tag	UNP Q06830
C	-4	PRO	-	expression tag	UNP Q06830
C	-3	ARG	-	expression tag	UNP Q06830

Continued on next page...

Continued from previous page...

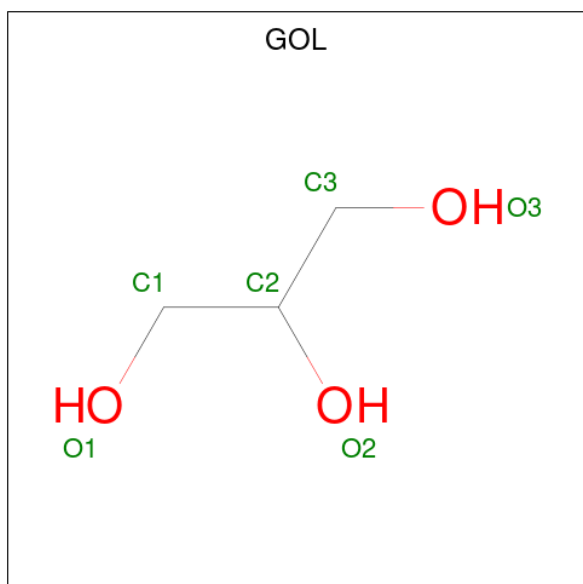
Chain	Residue	Modelled	Actual	Comment	Reference
C	-2	GLY	-	expression tag	UNP Q06830
C	-1	SER	-	expression tag	UNP Q06830
C	0	HIS	-	expression tag	UNP Q06830
C	83	SER	CYS	engineered mutation	UNP Q06830
D	-19	MET	-	expression tag	UNP Q06830
D	-18	GLY	-	expression tag	UNP Q06830
D	-17	SER	-	expression tag	UNP Q06830
D	-16	SER	-	expression tag	UNP Q06830
D	-15	HIS	-	expression tag	UNP Q06830
D	-14	HIS	-	expression tag	UNP Q06830
D	-13	HIS	-	expression tag	UNP Q06830
D	-12	HIS	-	expression tag	UNP Q06830
D	-11	HIS	-	expression tag	UNP Q06830
D	-10	HIS	-	expression tag	UNP Q06830
D	-9	SER	-	expression tag	UNP Q06830
D	-8	SER	-	expression tag	UNP Q06830
D	-7	GLY	-	expression tag	UNP Q06830
D	-6	LEU	-	expression tag	UNP Q06830
D	-5	VAL	-	expression tag	UNP Q06830
D	-4	PRO	-	expression tag	UNP Q06830
D	-3	ARG	-	expression tag	UNP Q06830
D	-2	GLY	-	expression tag	UNP Q06830
D	-1	SER	-	expression tag	UNP Q06830
D	0	HIS	-	expression tag	UNP Q06830
D	83	SER	CYS	engineered mutation	UNP Q06830
E	-19	MET	-	expression tag	UNP Q06830
E	-18	GLY	-	expression tag	UNP Q06830
E	-17	SER	-	expression tag	UNP Q06830
E	-16	SER	-	expression tag	UNP Q06830
E	-15	HIS	-	expression tag	UNP Q06830
E	-14	HIS	-	expression tag	UNP Q06830
E	-13	HIS	-	expression tag	UNP Q06830
E	-12	HIS	-	expression tag	UNP Q06830
E	-11	HIS	-	expression tag	UNP Q06830
E	-10	HIS	-	expression tag	UNP Q06830
E	-9	SER	-	expression tag	UNP Q06830
E	-8	SER	-	expression tag	UNP Q06830
E	-7	GLY	-	expression tag	UNP Q06830
E	-6	LEU	-	expression tag	UNP Q06830
E	-5	VAL	-	expression tag	UNP Q06830
E	-4	PRO	-	expression tag	UNP Q06830
E	-3	ARG	-	expression tag	UNP Q06830

Continued on next page...

Continued from previous page...

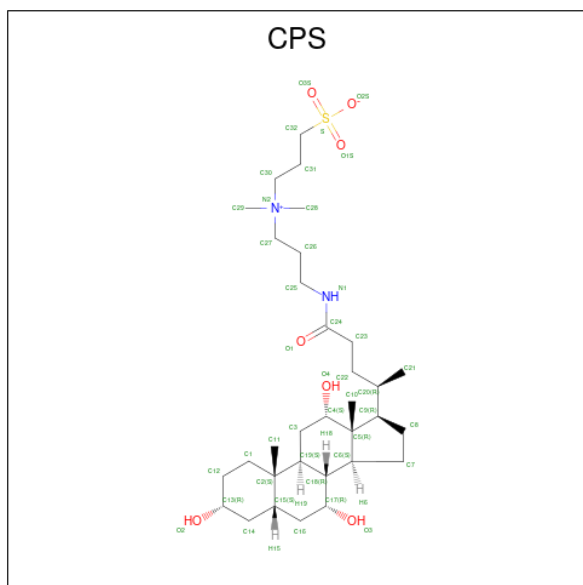
Chain	Residue	Modelled	Actual	Comment	Reference
E	-2	GLY	-	expression tag	UNP Q06830
E	-1	SER	-	expression tag	UNP Q06830
E	0	HIS	-	expression tag	UNP Q06830
E	83	SER	CYS	engineered mutation	UNP Q06830
F	-19	MET	-	expression tag	UNP Q06830
F	-18	GLY	-	expression tag	UNP Q06830
F	-17	SER	-	expression tag	UNP Q06830
F	-16	SER	-	expression tag	UNP Q06830
F	-15	HIS	-	expression tag	UNP Q06830
F	-14	HIS	-	expression tag	UNP Q06830
F	-13	HIS	-	expression tag	UNP Q06830
F	-12	HIS	-	expression tag	UNP Q06830
F	-11	HIS	-	expression tag	UNP Q06830
F	-10	HIS	-	expression tag	UNP Q06830
F	-9	SER	-	expression tag	UNP Q06830
F	-8	SER	-	expression tag	UNP Q06830
F	-7	GLY	-	expression tag	UNP Q06830
F	-6	LEU	-	expression tag	UNP Q06830
F	-5	VAL	-	expression tag	UNP Q06830
F	-4	PRO	-	expression tag	UNP Q06830
F	-3	ARG	-	expression tag	UNP Q06830
F	-2	GLY	-	expression tag	UNP Q06830
F	-1	SER	-	expression tag	UNP Q06830
F	0	HIS	-	expression tag	UNP Q06830
F	83	SER	CYS	engineered mutation	UNP Q06830

- Molecule 2 is GLYCEROL (CCD ID: GOL) (formula: C₃H₈O₃).



Mol	Chain	Residues	Atoms	ZeroOcc	AltConf
2	A	1	Total C O 6 3 3	0	0
2	C	1	Total C O 6 3 3	0	0
2	F	1	Total C O 6 3 3	0	0

- Molecule 3 is 3-[(3-CHOLAMIDOPROPYL)DIMETHYLAMMONIO]-1-PROPANESULFONATE (CCD ID: CPS) (formula: C₃₂H₅₈N₂O₇S).



Mol	Chain	Residues	Atoms	ZeroOcc	AltConf
3	A	1	Total C N O S 42 32 2 7 1	0	0
3	D	1	Total C N O S 42 32 2 7 1	0	0
3	E	1	Total C N O S 42 32 2 7 1	0	0

- Molecule 4 is water.

Mol	Chain	Residues	Atoms	ZeroOcc	AltConf
4	A	89	Total O 89 89	0	0
4	B	50	Total O 50 50	0	0
4	C	90	Total O 90 90	0	0

Continued on next page...

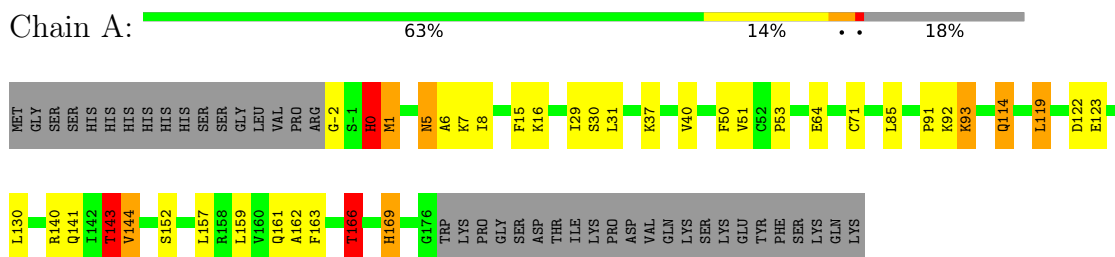
Continued from previous page...

Mol	Chain	Residues	Atoms	ZeroOcc	AltConf
4	D	44	Total O 44 44	0	0
4	E	52	Total O 52 52	0	0
4	F	74	Total O 74 74	0	0

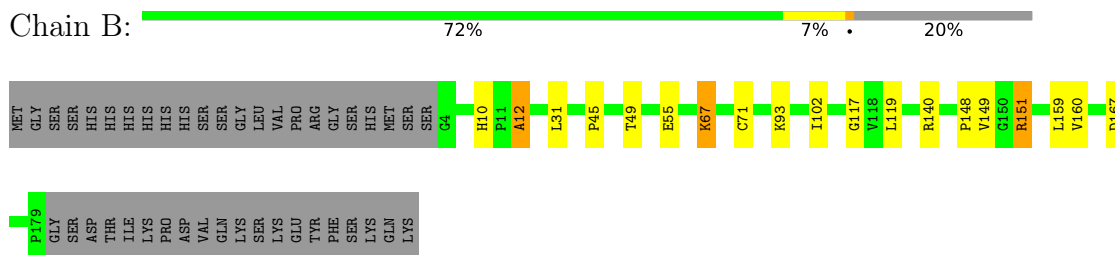
3 Residue-property plots [i](#)

These plots are drawn for all protein, RNA, DNA and oligosaccharide chains in the entry. The first graphic for a chain summarises the proportions of the various outlier classes displayed in the second graphic. The second graphic shows the sequence view annotated by issues in geometry and electron density. Residues are color-coded according to the number of geometric quality criteria for which they contain at least one outlier: green = 0, yellow = 1, orange = 2 and red = 3 or more. A red dot above a residue indicates a poor fit to the electron density ($RSRZ > 2$). Stretches of 2 or more consecutive residues without any outlier are shown as a green connector. Residues present in the sample, but not in the model, are shown in grey.

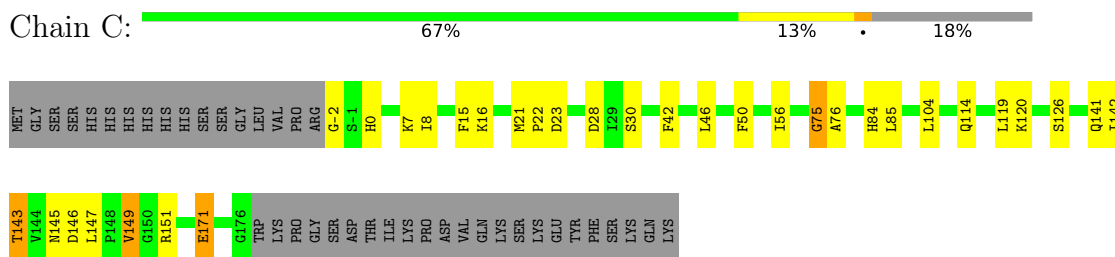
- Molecule 1: Peroxiredoxin-1



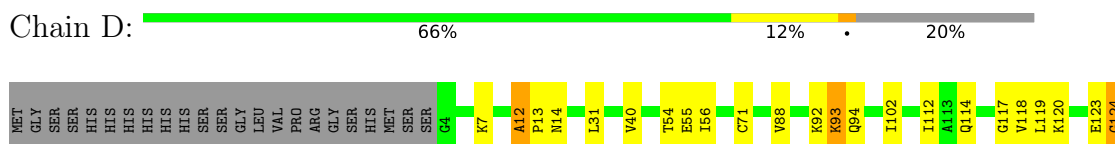
- Molecule 1: Peroxiredoxin-1

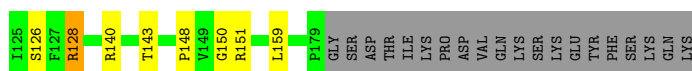


- Molecule 1: Peroxiredoxin-1

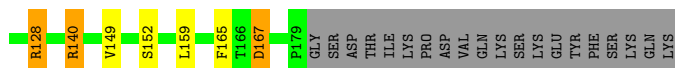


- Molecule 1: Peroxiredoxin-1





- Molecule 1: Peroxiredoxin-1



- Molecule 1: Peroxiredoxin-1



4 Data and refinement statistics i

Property	Value	Source
Space group	C 1 2 1	Depositor
Cell constants a, b, c, α , β , γ	138.79Å 80.13Å 125.62Å 90.00° 89.99° 90.00°	Depositor
Resolution (Å)	50.00 – 2.10 50.00 – 2.10	Depositor EDS
% Data completeness (in resolution range)	99.7 (50.00-2.10) 99.7 (50.00-2.10)	Depositor EDS
R_{merge}	0.06	Depositor
R_{sym}	0.38	Depositor
$\langle I/\sigma(I) \rangle$ ¹	5.04 (at 2.10Å)	Xtriage
Refinement program	REFMAC 5.8.0071	Depositor
R, R_{free}	0.176 , 0.222 0.183 , 0.223	Depositor DCC
R_{free} test set	4013 reflections (5.01%)	wwPDB-VP
Wilson B-factor (Å ²)	29.3	Xtriage
Anisotropy	0.041	Xtriage
Bulk solvent k_{sol} (e/Å ³), B_{sol} (Å ²)	0.37 , 32.2	EDS
L-test for twinning ²	$\langle L \rangle = 0.49$, $\langle L^2 \rangle = 0.32$	Xtriage
Estimated twinning fraction	0.032 for -1/2*h-3/2*k,-1/2*h+1/2*k,-l 0.033 for -1/2*h+3/2*k,1/2*h+1/2*k,-l 0.488 for 1/2*h-3/2*k,-1/2*h-1/2*k,-l 0.488 for 1/2*h+3/2*k,1/2*h-1/2*k,-l 0.029 for -h,-k,l	Xtriage
F_o, F_c correlation	0.97	EDS
Total number of atoms	8912	wwPDB-VP
Average B, all atoms (Å ²)	33.0	wwPDB-VP

Xtriage's analysis on translational NCS is as follows: *The largest off-origin peak in the Patterson function is 4.92% of the height of the origin peak. No significant pseudotranslation is detected.*

¹Intensities estimated from amplitudes.

²Theoretical values of $\langle |L| \rangle$, $\langle L^2 \rangle$ for acentric reflections are 0.5, 0.333 respectively for untwinned datasets, and 0.375, 0.2 for perfectly twinned datasets.

5 Model quality [i](#)

5.1 Standard geometry [i](#)

Bond lengths and bond angles in the following residue types are not validated in this section: GOL, CPS

The Z score for a bond length (or angle) is the number of standard deviations the observed value is removed from the expected value. A bond length (or angle) with $|Z| > 5$ is considered an outlier worth inspection. RMSZ is the root-mean-square of all Z scores of the bond lengths (or angles).

Mol	Chain	Bond lengths		Bond angles	
		RMSZ	# Z >5	RMSZ	# Z >5
1	A	1.30	7/1431 (0.5%)	1.22	5/1936 (0.3%)
1	B	1.23	2/1448 (0.1%)	1.15	2/1962 (0.1%)
1	C	1.31	4/1422 (0.3%)	1.14	3/1924 (0.2%)
1	D	1.23	2/1441 (0.1%)	1.18	7/1952 (0.4%)
1	E	1.25	4/1443 (0.3%)	1.24	11/1955 (0.6%)
1	F	1.32	5/1428 (0.4%)	1.21	3/1932 (0.2%)
All	All	1.27	24/8613 (0.3%)	1.19	31/11661 (0.3%)

Chiral center outliers are detected by calculating the chiral volume of a chiral center and verifying if the center is modelled as a planar moiety or with the opposite hand. A planarity outlier is detected by checking planarity of atoms in a peptide group, atoms in a mainchain group or atoms of a sidechain that are expected to be planar.

Mol	Chain	#Chirality outliers	#Planarity outliers
1	A	0	1
1	D	0	1
1	F	0	1
All	All	0	3

The worst 5 of 24 bond length outliers are listed below:

Mol	Chain	Res	Type	Atoms	Z	Observed(Å)	Ideal(Å)
1	B	102	ILE	C-O	-7.73	1.18	1.24
1	E	102	ILE	C-O	-6.78	1.19	1.24
1	F	50	PHE	C-O	-6.20	1.15	1.24
1	C	142	ILE	C-O	6.06	1.30	1.24
1	D	102	ILE	C-O	-5.80	1.20	1.24

The worst 5 of 31 bond angle outliers are listed below:

Mol	Chain	Res	Type	Atoms	Z	Observed(°)	Ideal(°)
1	A	169	HIS	N-CA-C	-10.89	92.63	109.95
1	D	128	ARG	NE-CZ-NH2	-7.49	112.46	119.20
1	F	0	HIS	N-CA-C	7.21	119.22	111.36
1	E	140	ARG	NE-CZ-NH2	-7.11	112.80	119.20
1	E	128	ARG	CG-CD-NE	-6.75	97.15	112.00

There are no chirality outliers.

All (3) planarity outliers are listed below:

Mol	Chain	Res	Type	Group
1	A	0	HIS	Peptide
1	D	123	GLU	Peptide
1	F	0	HIS	Peptide

5.2 Too-close contacts [i](#)

In the following table, the Non-H and H(model) columns list the number of non-hydrogen atoms and hydrogen atoms in the chain respectively. The H(added) column lists the number of hydrogen atoms added and optimized by MolProbity. The Clashes column lists the number of clashes within the asymmetric unit, whereas Symm-Clashes lists symmetry-related clashes.

Mol	Chain	Non-H	H(model)	H(added)	Clashes	Symm-Clashes
1	A	1393	0	1379	41	0
1	B	1401	0	1392	9	0
1	C	1387	0	1371	21	0
1	D	1398	0	1391	16	0
1	E	1400	0	1385	13	0
1	F	1390	0	1376	24	0
2	A	6	0	8	0	0
2	C	6	0	8	0	0
2	F	6	0	8	2	0
3	A	42	0	57	0	0
3	D	42	0	57	0	0
3	E	42	0	57	2	0
4	A	89	0	0	4	0
4	B	50	0	0	1	0
4	C	90	0	0	2	0
4	D	44	0	0	3	0
4	E	52	0	0	3	0
4	F	74	0	0	0	0
All	All	8912	0	8489	116	0

The all-atom clashscore is defined as the number of clashes found per 1000 atoms (including hydrogen atoms). The all-atom clashscore for this structure is 7.

The worst 5 of 116 close contacts within the same asymmetric unit are listed below, sorted by their clash magnitude.

Atom-1	Atom-2	Interatomic distance (Å)	Clash overlap (Å)
1:B:151:ARG:NH2	4:B:236:HOH:O	1.88	1.05
1:C:0:HIS:HE1	1:C:8:ILE:H	1.30	0.78
1:A:166:THR:HG23	4:A:323:HOH:O	1.88	0.73
1:D:114:GLN:HG3	1:D:119:LEU:HD22	1.71	0.73
1:B:140:ARG:NH2	1:B:167:ASP:OD1	2.22	0.72

There are no symmetry-related clashes.

5.3 Torsion angles [i](#)

5.3.1 Protein backbone [i](#)

In the following table, the Percentiles column shows the percent Ramachandran outliers of the chain as a percentile score with respect to all X-ray entries followed by that with respect to entries of similar resolution.

The Analysed column shows the number of residues for which the backbone conformation was analysed, and the total number of residues.

Mol	Chain	Analysed	Favoured	Allowed	Outliers	Percentiles	
1	A	178/219 (81%)	171 (96%)	6 (3%)	1 (1%)	21	18
1	B	178/219 (81%)	175 (98%)	2 (1%)	1 (1%)	21	18
1	C	177/219 (81%)	174 (98%)	3 (2%)	0	100	100
1	D	177/219 (81%)	170 (96%)	5 (3%)	2 (1%)	11	8
1	E	178/219 (81%)	172 (97%)	6 (3%)	0	100	100
1	F	178/219 (81%)	171 (96%)	6 (3%)	1 (1%)	21	18
All	All	1066/1314 (81%)	1033 (97%)	28 (3%)	5 (0%)	24	22

All (5) Ramachandran outliers are listed below:

Mol	Chain	Res	Type
1	A	1	MET
1	F	1	MET
1	D	124	GLY

Continued on next page...

Continued from previous page...

Mol	Chain	Res	Type
1	D	93	LYS
1	B	45	PRO

5.3.2 Protein sidechains [i](#)

In the following table, the Percentiles column shows the percent sidechain outliers of the chain as a percentile score with respect to all X-ray entries followed by that with respect to entries of similar resolution.

The Analysed column shows the number of residues for which the sidechain conformation was analysed, and the total number of residues.

Mol	Chain	Analysed	Rotameric	Outliers	Percentiles
1	A	152/188 (81%)	145 (95%)	7 (5%)	24 25
1	B	153/188 (81%)	146 (95%)	7 (5%)	24 25
1	C	151/188 (80%)	148 (98%)	3 (2%)	48 56
1	D	152/188 (81%)	146 (96%)	6 (4%)	28 31
1	E	153/188 (81%)	144 (94%)	9 (6%)	18 16
1	F	152/188 (81%)	147 (97%)	5 (3%)	33 37
All	All	913/1128 (81%)	876 (96%)	37 (4%)	27 29

5 of 37 residues with a non-rotameric sidechain are listed below:

Mol	Chain	Res	Type
1	E	119	LEU
1	F	168	LYS
1	E	149	VAL
1	F	16	LYS
1	B	151	ARG

Sometimes sidechains can be flipped to improve hydrogen bonding and reduce clashes. 5 of 25 such sidechains are listed below:

Mol	Chain	Res	Type
1	D	25	GLN
1	E	5	ASN
1	F	161	GLN
1	D	101	ASN
1	E	70	ASN

5.3.3 RNA [i](#)

There are no RNA molecules in this entry.

5.4 Non-standard residues in protein, DNA, RNA chains [i](#)

There are no non-standard protein/DNA/RNA residues in this entry.

5.5 Carbohydrates [i](#)

There are no oligosaccharides in this entry.

5.6 Ligand geometry [i](#)

6 ligands are modelled in this entry.

In the following table, the Counts columns list the number of bonds (or angles) for which Mogul statistics could be retrieved, the number of bonds (or angles) that are observed in the model and the number of bonds (or angles) that are defined in the Chemical Component Dictionary. The Link column lists molecule types, if any, to which the group is linked. The Z score for a bond length (or angle) is the number of standard deviations the observed value is removed from the expected value. A bond length (or angle) with $|Z| > 2$ is considered an outlier worth inspection. RMSZ is the root-mean-square of all Z scores of the bond lengths (or angles).

Mol	Type	Chain	Res	Link	Bond lengths			Bond angles		
					Counts	RMSZ	# Z > 2	Counts	RMSZ	# Z > 2
2	GOL	A	201	-	5,5,5	0.49	0	5,5,5	0.61	0
2	GOL	F	201	-	5,5,5	0.74	0	5,5,5	1.36	1 (20%)
3	CPS	E	201	-	45,45,45	1.39	3 (6%)	70,70,70	1.89	16 (22%)
2	GOL	C	201	-	5,5,5	0.34	0	5,5,5	0.64	0
3	CPS	D	201	-	45,45,45	1.44	4 (8%)	70,70,70	1.89	20 (28%)
3	CPS	A	202	-	45,45,45	1.57	3 (6%)	70,70,70	1.95	19 (27%)

In the following table, the Chirals column lists the number of chiral outliers, the number of chiral centers analysed, the number of these observed in the model and the number defined in the Chemical Component Dictionary. Similar counts are reported in the Torsion and Rings columns. '-' means no outliers of that kind were identified.

Mol	Type	Chain	Res	Link	Chirals	Torsions	Rings
2	GOL	A	201	-	-	1/4/4/4	-
2	GOL	F	201	-	-	4/4/4/4	-
3	CPS	E	201	-	-	8/25/90/90	0/4/4/4

Continued on next page...

Continued from previous page...

Mol	Type	Chain	Res	Link	Chirals	Torsions	Rings
2	GOL	C	201	-	-	0/4/4/4	-
3	CPS	D	201	-	-	9/25/90/90	0/4/4/4
3	CPS	A	202	-	-	8/25/90/90	0/4/4/4

The worst 5 of 10 bond length outliers are listed below:

Mol	Chain	Res	Type	Atoms	Z	Observed(Å)	Ideal(Å)
3	A	202	CPS	C32-S	-7.78	1.66	1.77
3	D	201	CPS	C32-S	-6.83	1.68	1.77
3	E	201	CPS	C32-S	-6.17	1.68	1.77
3	A	202	CPS	C7-C6	-3.40	1.47	1.54
3	E	201	CPS	C7-C6	-3.25	1.47	1.54

The worst 5 of 56 bond angle outliers are listed below:

Mol	Chain	Res	Type	Atoms	Z	Observed(°)	Ideal(°)
3	A	202	CPS	C7-C6-C5	6.41	109.76	103.54
3	E	201	CPS	C7-C6-C5	5.90	109.26	103.54
3	E	201	CPS	C7-C6-C18	5.34	125.68	118.36
3	A	202	CPS	C14-C15-C2	-4.32	108.06	112.66
3	E	201	CPS	C5-C6-C18	4.26	120.11	114.72

There are no chirality outliers.

5 of 30 torsion outliers are listed below:

Mol	Chain	Res	Type	Atoms
2	F	201	GOL	O1-C1-C2-C3
3	A	202	CPS	C25-C26-C27-N2
3	A	202	CPS	N2-C30-C31-C32
3	A	202	CPS	C31-C32-S-O1S
3	D	201	CPS	C26-C27-N2-C30

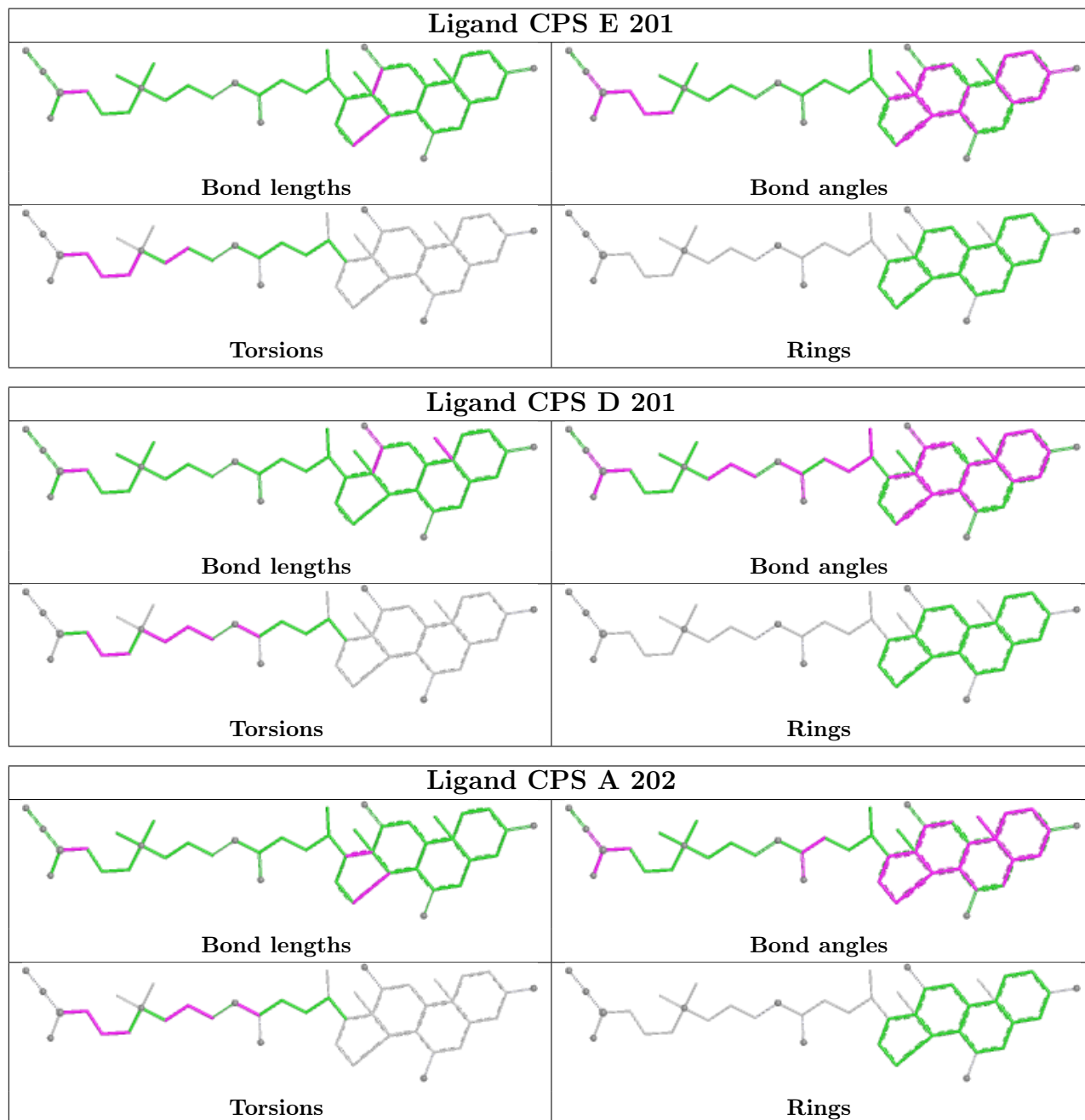
There are no ring outliers.

2 monomers are involved in 4 short contacts:

Mol	Chain	Res	Type	Clashes	Symm-Clashes
2	F	201	GOL	2	0
3	E	201	CPS	2	0

The following is a two-dimensional graphical depiction of Mogul quality analysis of bond lengths, bond angles, torsion angles, and ring geometry for all instances of the Ligand of Interest. In

addition, ligands with molecular weight > 250 and outliers as shown on the validation Tables will also be included. For torsion angles, if less than 5% of the Mogul distribution of torsion angles is within 10 degrees of the torsion angle in question, then that torsion angle is considered an outlier. Any bond that is central to one or more torsion angles identified as an outlier by Mogul will be highlighted in the graph. For rings, the root-mean-square deviation (RMSD) between the ring in question and similar rings identified by Mogul is calculated over all ring torsion angles. If the average RMSD is greater than 60 degrees and the minimal RMSD between the ring in question and any Mogul-identified rings is also greater than 60 degrees, then that ring is considered an outlier. The outliers are highlighted in purple. The color gray indicates Mogul did not find sufficient equivalents in the CSD to analyse the geometry.



5.7 Other polymers [i](#)

There are no such residues in this entry.

5.8 Polymer linkage issues [i](#)

There are no chain breaks in this entry.

6 Fit of model and data [i](#)

6.1 Protein, DNA and RNA chains [i](#)

In the following table, the column labelled ‘#RSRZ> 2’ contains the number (and percentage) of RSRZ outliers, followed by percent RSRZ outliers for the chain as percentile scores relative to all X-ray entries and entries of similar resolution. The OWAB column contains the minimum, median, 95th percentile and maximum values of the occupancy-weighted average B-factor per residue. The column labelled ‘Q< 0.9’ lists the number of (and percentage) of residues with an average occupancy less than 0.9.

Mol	Chain	Analysed	<RSRZ>	#RSRZ>2	OWAB(Å ²)	Q<0.9
1	A	179/219 (81%)	-1.42	0 100 100	20, 27, 47, 62	1 (0%)
1	B	176/219 (80%)	-1.34	0 100 100	15, 34, 53, 76	4 (2%)
1	C	179/219 (81%)	-1.41	0 100 100	19, 28, 47, 68	0
1	D	176/219 (80%)	-1.31	0 100 100	15, 34, 52, 71	3 (1%)
1	E	177/219 (80%)	-1.31	0 100 100	18, 34, 52, 73	3 (1%)
1	F	179/219 (81%)	-1.42	0 100 100	15, 28, 48, 76	1 (0%)
All	All	1066/1314 (81%)	-1.37	0 100 100	15, 30, 50, 76	12 (1%)

There are no RSRZ outliers to report.

6.2 Non-standard residues in protein, DNA, RNA chains [i](#)

There are no non-standard protein/DNA/RNA residues in this entry.

6.3 Carbohydrates [i](#)

There are no oligosaccharides in this entry.

6.4 Ligands [i](#)

In the following table, the Atoms column lists the number of modelled atoms in the group and the number defined in the chemical component dictionary. The B-factors column lists the minimum, median, 95th percentile and maximum values of B factors of atoms in the group. The column labelled ‘Q< 0.9’ lists the number of atoms with occupancy less than 0.9.

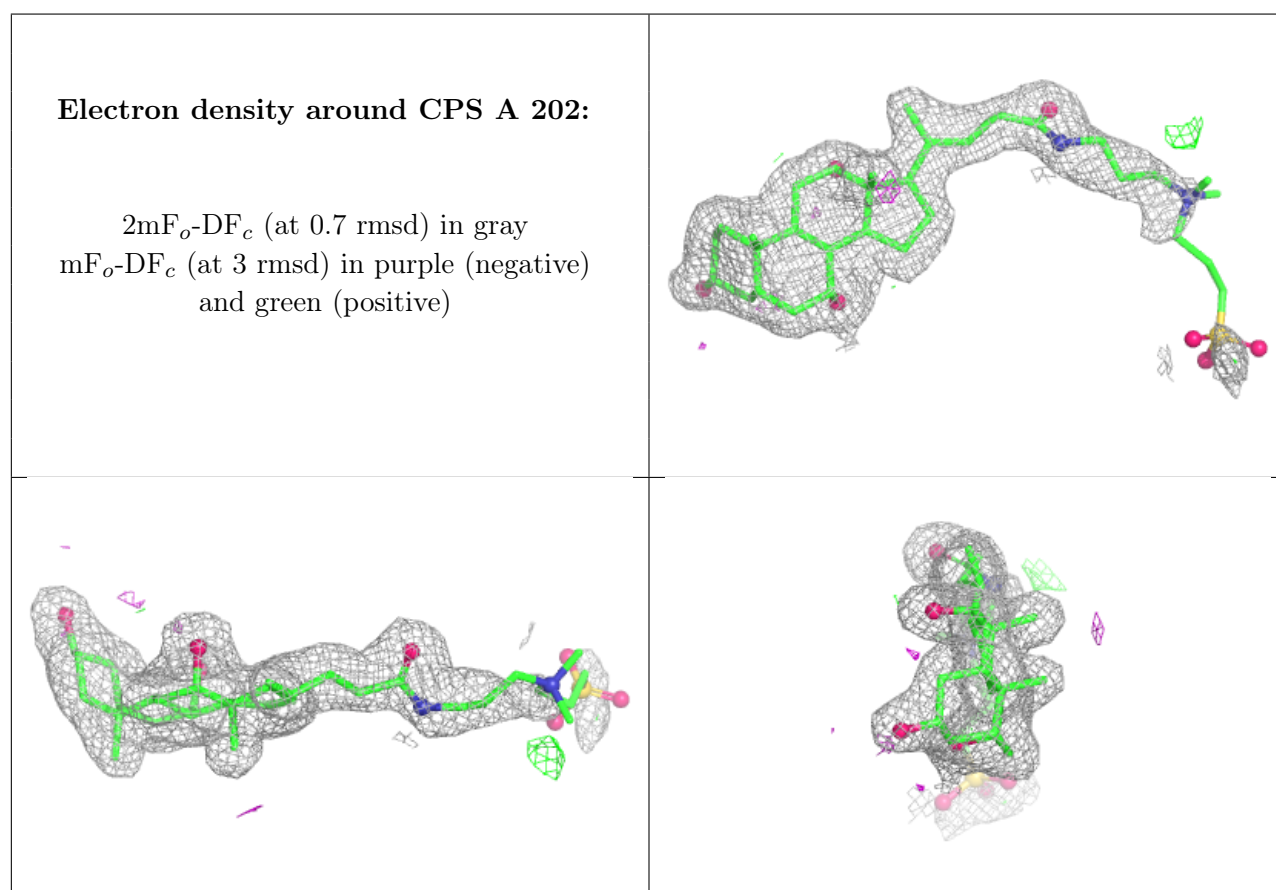
Mol	Type	Chain	Res	Atoms	RSCC	RSR	B-factors(Å ²)	Q<0.9
2	GOL	A	201	6/6	0.99	0.04	31,33,33,34	0

Continued on next page...

Continued from previous page...

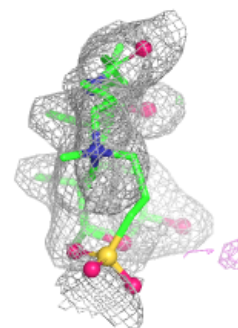
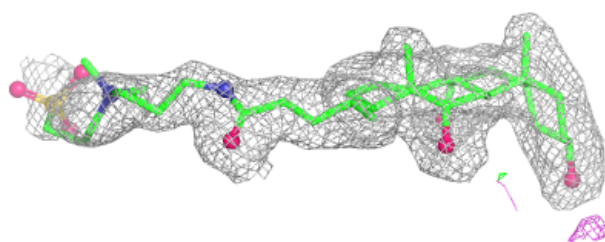
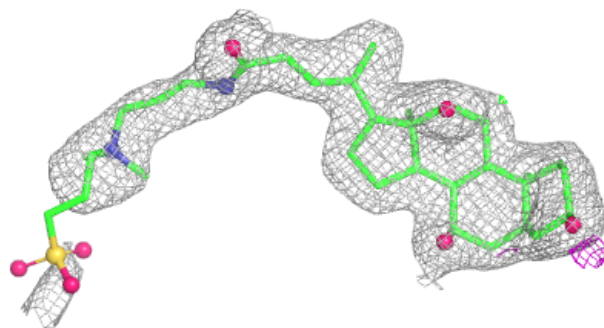
Mol	Type	Chain	Res	Atoms	RSCC	RSR	B-factors(\AA^2)	Q<0.9
2	GOL	C	201	6/6	0.99	0.04	30,35,37,37	0
2	GOL	F	201	6/6	0.99	0.05	30,37,39,57	0
3	CPS	A	202	42/42	0.99	0.06	24,30,147,167	0
3	CPS	D	201	42/42	0.99	0.05	23,29,163,174	0
3	CPS	E	201	42/42	0.99	0.06	22,30,179,192	0

The following is a graphical depiction of the model fit to experimental electron density of all instances of the Ligand of Interest. In addition, ligands with molecular weight > 250 and outliers as shown on the geometry validation Tables will also be included. Each fit is shown from different orientation to approximate a three-dimensional view.

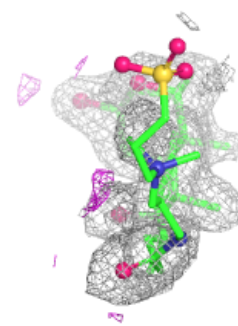
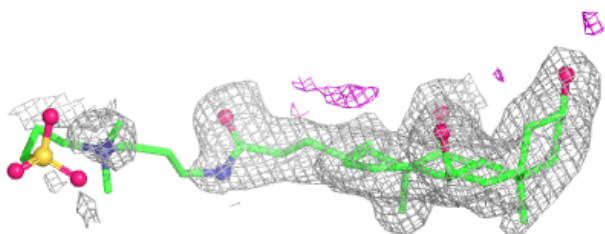
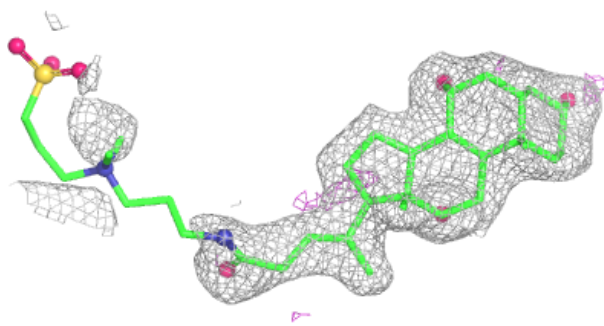


Electron density around CPS D 201:

$2mF_o-DF_c$ (at 0.7 rmsd) in gray
 mF_o-DF_c (at 3 rmsd) in purple (negative)
and green (positive)

**Electron density around CPS E 201:**

$2mF_o-DF_c$ (at 0.7 rmsd) in gray
 mF_o-DF_c (at 3 rmsd) in purple (negative)
and green (positive)



6.5 Other polymers [i](#)

There are no such residues in this entry.