



wwPDB X-ray Structure Validation Summary Report ⓘ

Mar 10, 2026 – 12:26 AM UTC

PDB ID : 1XPL / pdb_00001xpl
Title : Crystal Structure of Staphylococcus aureus HMG-COA Synthase with Acetoacetyl-COA and Acetylated Cysteine
Authors : Theisen, M.J.; Misra, I.; Saadat, D.; Campobasso, N.; Miziorko, H.M.; Harrison, D.H.T.
Deposited on : 2004-10-08
Resolution : 2.00 Å(reported)

This is a wwPDB X-ray Structure Validation Summary Report for a publicly released PDB entry.

We welcome your comments at validation@mail.wwpdb.org

A user guide is available at

<https://www.wwpdb.org/validation/2017/XrayValidationReportHelp>

with specific help available everywhere you see the ⓘ symbol.

The types of validation reports are described at

<http://www.wwpdb.org/validation/2017/FAQs#types>.

The following versions of software and data (see [references ⓘ](#)) were used in the production of this report:

MolProbity : 4-5-2 with Phenix2.0
Mogul : 2022.3.0, CSD as543be (2022)
Xtrriage (Phenix) : 2.0
EDS : 3.0
Buster-report : wwPDB partial adaption of 1.1.7 (2018)
Percentile statistics : 20250101.v01 (using entries in the PDB archive January 1st 2025)
CCP4 : 9.0.010 (Gargrove)
Density-Fitness : 1.0.12
Ideal geometry (proteins) : Engh & Huber (2001)
Ideal geometry (DNA, RNA) : Parkinson et al. (1996)
Validation Pipeline (wwPDB-VP) : 2.49

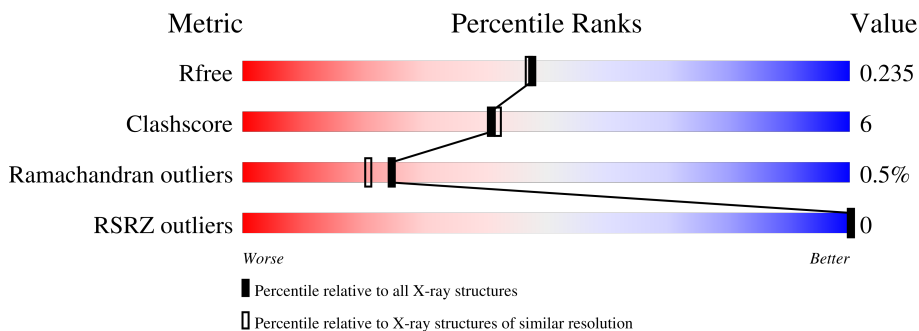
1 Overall quality at a glance

The following experimental techniques were used to determine the structure:

X-RAY DIFFRACTION

The reported resolution of this entry is 2.00 Å.

Percentile scores (ranging between 0-100) for global validation metrics of the entry are shown in the following graphic. The table shows the number of entries on which the scores are based.



Metric	Whole archive (#Entries)	Similar resolution (#Entries, resolution range(Å))
R_{free}	180053	10052 (2.00-2.00)
Clashscore	190562	11152 (2.00-2.00)
Ramachandran outliers	187476	11031 (2.00-2.00)
RSRZ outliers	180081	10067 (2.00-2.00)

The table below summarises the geometric issues observed across the polymeric chains and their fit to the electron density. The red, orange, yellow and green segments of the lower bar indicate the fraction of residues that contain outliers for ≥ 3 , 2, 1 and 0 types of geometric quality criteria respectively. A grey segment represents the fraction of residues that are not modelled. The numeric value for each fraction is indicated below the corresponding segment, with a dot representing fractions $\leq 5\%$. The upper red bar (where present) indicates the fraction of residues that have poor fit to the electron density. The numeric value is given above the bar.

Mol	Chain	Length	Quality of chain
1	A	397	 82% 16% ..
1	B	397	 82% 16% .
1	C	397	 81% 17% ..
1	D	397	 84% 13% ..

The following table lists non-polymeric compounds, carbohydrate monomers and non-standard residues in protein, DNA, RNA chains that are outliers for geometric or electron-density-fit crite-

ria:

Mol	Type	Chain	Res	Chirality	Geometry	Clashes	Electron density
1	SCY	B	111[A]	-	-	X	-
1	SCY	C	111[A]	-	-	X	-

2 Entry composition i

There are 4 unique types of molecules in this entry. The entry contains 12654 atoms, of which 0 are hydrogens and 0 are deuteriums.

In the tables below, the ZeroOcc column contains the number of atoms modelled with zero occupancy, the AltConf column contains the number of residues with at least one atom in alternate conformation and the Trace column contains the number of residues modelled with at most 2 atoms.

- Molecule 1 is a protein called 3-hydroxy-3-methylglutaryl CoA synthase.

Mol	Chain	Residues	Atoms					ZeroOcc	AltConf	Trace
			Total	C	N	O	S			
1	A	389	Total 2979	C 1905	N 501	O 562	S 11	0	4	0
1	B	389	Total 2973	C 1904	N 500	O 558	S 11	0	4	0
1	C	389	Total 3005	C 1922	N 505	O 567	S 11	0	7	0
1	D	389	Total 2986	C 1911	N 504	O 560	S 11	0	4	0

There are 44 discrepancies between the modelled and reference sequences:

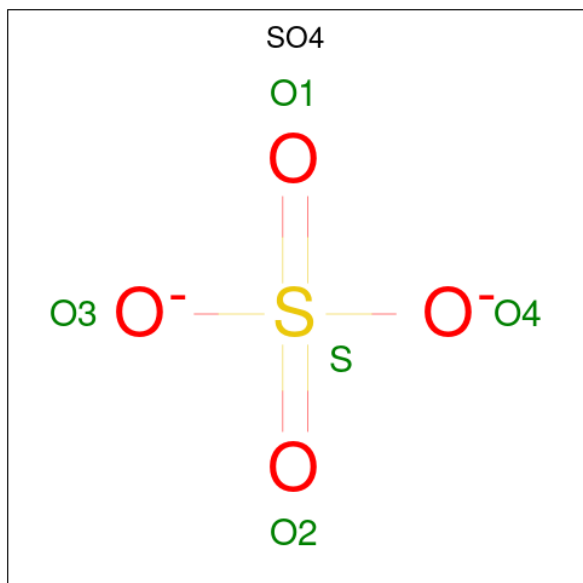
Chain	Residue	Modelled	Actual	Comment	Reference
A	1	MET	-	initiating methionine	UNP Q79ZY6
A	2	ALA	-	cloning artifact	UNP Q79ZY6
A	111	SCY	CYS	microheterogeneity	UNP Q79ZY6
A	389	LEU	-	cloning artifact	UNP Q79ZY6
A	390	GLU	-	cloning artifact	UNP Q79ZY6
A	391	HIS	-	expression tag	UNP Q79ZY6
A	392	HIS	-	expression tag	UNP Q79ZY6
A	393	HIS	-	expression tag	UNP Q79ZY6
A	394	HIS	-	expression tag	UNP Q79ZY6
A	395	HIS	-	expression tag	UNP Q79ZY6
A	396	HIS	-	expression tag	UNP Q79ZY6
B	1	MET	-	initiating methionine	UNP Q79ZY6
B	2	ALA	-	cloning artifact	UNP Q79ZY6
B	111	SCY	CYS	microheterogeneity	UNP Q79ZY6
B	389	LEU	-	cloning artifact	UNP Q79ZY6
B	390	GLU	-	cloning artifact	UNP Q79ZY6
B	391	HIS	-	expression tag	UNP Q79ZY6
B	392	HIS	-	expression tag	UNP Q79ZY6
B	393	HIS	-	expression tag	UNP Q79ZY6
B	394	HIS	-	expression tag	UNP Q79ZY6
B	395	HIS	-	expression tag	UNP Q79ZY6

Continued on next page...

Continued from previous page...

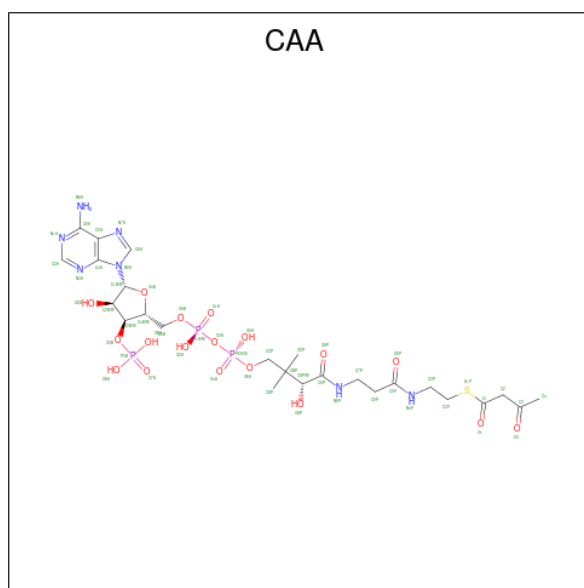
Chain	Residue	Modelled	Actual	Comment	Reference
B	396	HIS	-	expression tag	UNP Q79ZY6
C	1	MET	-	initiating methionine	UNP Q79ZY6
C	2	ALA	-	cloning artifact	UNP Q79ZY6
C	111	SCY	CYS	microheterogeneity	UNP Q79ZY6
C	389	LEU	-	cloning artifact	UNP Q79ZY6
C	390	GLU	-	cloning artifact	UNP Q79ZY6
C	391	HIS	-	expression tag	UNP Q79ZY6
C	392	HIS	-	expression tag	UNP Q79ZY6
C	393	HIS	-	expression tag	UNP Q79ZY6
C	394	HIS	-	expression tag	UNP Q79ZY6
C	395	HIS	-	expression tag	UNP Q79ZY6
C	396	HIS	-	expression tag	UNP Q79ZY6
D	1	MET	-	initiating methionine	UNP Q79ZY6
D	2	ALA	-	cloning artifact	UNP Q79ZY6
D	111	SCY	CYS	microheterogeneity	UNP Q79ZY6
D	389	LEU	-	cloning artifact	UNP Q79ZY6
D	390	GLU	-	cloning artifact	UNP Q79ZY6
D	391	HIS	-	expression tag	UNP Q79ZY6
D	392	HIS	-	expression tag	UNP Q79ZY6
D	393	HIS	-	expression tag	UNP Q79ZY6
D	394	HIS	-	expression tag	UNP Q79ZY6
D	395	HIS	-	expression tag	UNP Q79ZY6
D	396	HIS	-	expression tag	UNP Q79ZY6

- Molecule 2 is SULFATE ION (CCD ID: SO4) (formula: O₄S).



Mol	Chain	Residues	Atoms			ZeroOcc	AltConf
2	A	1	Total	O	S	0	0
			5	4	1		
2	A	1	Total	O	S	0	0
			5	4	1		
2	B	1	Total	O	S	0	0
			5	4	1		
2	B	1	Total	O	S	0	0
			5	4	1		
2	C	1	Total	O	S	0	0
			5	4	1		
2	C	1	Total	O	S	0	0
			5	4	1		
2	D	1	Total	O	S	0	0
			5	4	1		
2	D	1	Total	O	S	0	0
			5	4	1		

- Molecule 3 is ACETOACETYL-COENZYME A (CCD ID: CAA) (formula: $C_{25}H_{40}N_7O_{18}P_3S$).



Mol	Chain	Residues	Atoms					ZeroOcc	AltConf	
3	A	1	Total	C	N	O	P	S	0	0
			54	25	7	18	3	1		
3	B	1	Total	C	N	O	P	S	0	0
			54	25	7	18	3	1		
3	C	1	Total	C	N	O	P	S	0	0
			54	25	7	18	3	1		
3	D	1	Total	C	N	O	P	S	0	0
			54	25	7	18	3	1		

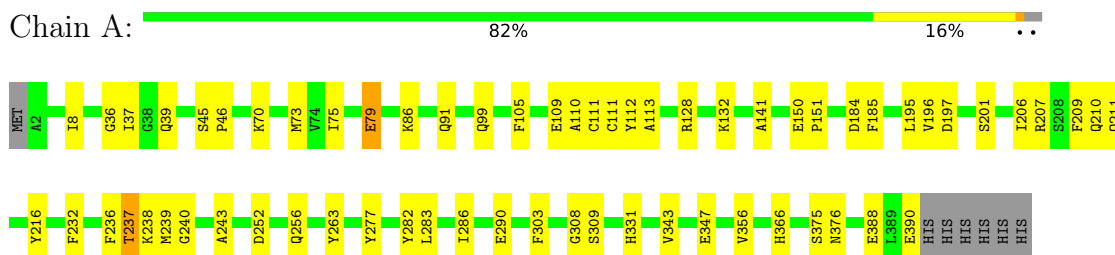
- Molecule 4 is water.

Mol	Chain	Residues	Atoms		ZeroOcc	AltConf
4	A	113	Total 113	O 113	0	0
4	B	121	Total 121	O 121	0	0
4	C	119	Total 119	O 119	0	1
4	D	102	Total 102	O 102	0	0

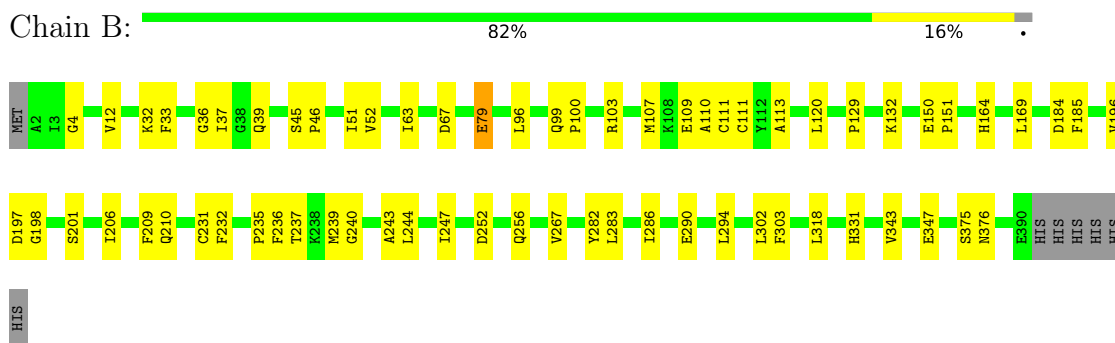
3 Residue-property plots

These plots are drawn for all protein, RNA, DNA and oligosaccharide chains in the entry. The first graphic for a chain summarises the proportions of the various outlier classes displayed in the second graphic. The second graphic shows the sequence view annotated by issues in geometry and electron density. Residues are color-coded according to the number of geometric quality criteria for which they contain at least one outlier: green = 0, yellow = 1, orange = 2 and red = 3 or more. A red dot above a residue indicates a poor fit to the electron density ($RSRZ > 2$). Stretches of 2 or more consecutive residues without any outlier are shown as a green connector. Residues present in the sample, but not in the model, are shown in grey.

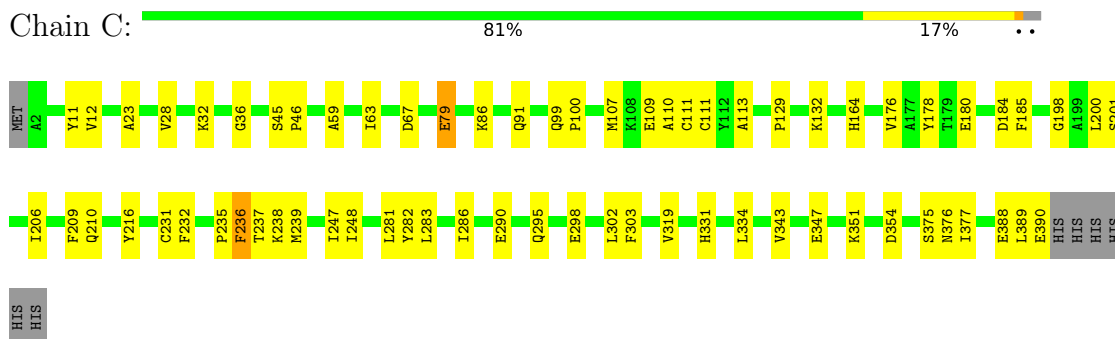
- Molecule 1: 3-hydroxy-3-methylglutaryl CoA synthase



- Molecule 1: 3-hydroxy-3-methylglutaryl CoA synthase

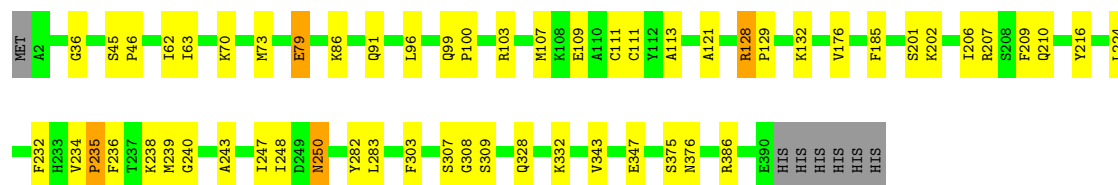


- Molecule 1: 3-hydroxy-3-methylglutaryl CoA synthase



- Molecule 1: 3-hydroxy-3-methylglutaryl CoA synthase





4 Data and refinement statistics i

Property	Value	Source
Space group	P 1 21 1	Depositor
Cell constants a, b, c, α , β , γ	65.33Å 118.41Å 121.63Å 90.00° 90.03° 90.00°	Depositor
Resolution (Å)	29.50 – 2.00 29.50 – 2.01	Depositor EDS
% Data completeness (in resolution range)	(Not available) (29.50-2.00) 86.1 (29.50-2.01)	Depositor EDS
R_{merge}	0.06	Depositor
R_{sym}	0.06	Depositor
$\langle I/\sigma(I) \rangle$ ¹	3.61 (at 2.01Å)	Xtrriage
Refinement program	CNS	Depositor
R, R_{free}	0.201 , 0.234 0.202 , 0.235	Depositor DCC
R_{free} test set	5269 reflections (5.00%)	wwPDB-VP
Wilson B-factor (Å ²)	20.8	Xtrriage
Anisotropy	0.492	Xtrriage
Bulk solvent k_{sol} (e/Å ³), B_{sol} (Å ²)	0.35 , 22.4	EDS
L-test for twinning ²	$\langle L \rangle = 0.49$, $\langle L^2 \rangle = 0.32$	Xtrriage
Estimated twinning fraction	0.000 for -h,l,k 0.000 for -h,-l,-k 0.467 for h,-k,-l	Xtrriage
F_o, F_c correlation	0.97	EDS
Total number of atoms	12654	wwPDB-VP
Average B, all atoms (Å ²)	22.0	wwPDB-VP

Xtrriage's analysis on translational NCS is as follows: *The analyses of the Patterson function reveals a significant off-origin peak that is 47.50 % of the origin peak, indicating pseudo-translational symmetry. The chance of finding a peak of this or larger height randomly in a structure without pseudo-translational symmetry is equal to 9.8286e-05. The detected translational NCS is most likely also responsible for the elevated intensity ratio.*

¹Intensities estimated from amplitudes.

²Theoretical values of $\langle |L| \rangle$, $\langle L^2 \rangle$ for acentric reflections are 0.5, 0.333 respectively for untwinned datasets, and 0.375, 0.2 for perfectly twinned datasets.

5 Model quality i

5.1 Standard geometry i

Bond lengths and bond angles in the following residue types are not validated in this section: CAA, SO4, SCY

The Z score for a bond length (or angle) is the number of standard deviations the observed value is removed from the expected value. A bond length (or angle) with $|Z| > 5$ is considered an outlier worth inspection. RMSZ is the root-mean-square of all Z scores of the bond lengths (or angles).

Mol	Chain	Bond lengths		Bond angles	
		RMSZ	# $ Z > 5$	RMSZ	# $ Z > 5$
1	A	0.38	0/3038	0.87	11/4128 (0.3%)
1	B	0.37	0/3032	0.87	9/4121 (0.2%)
1	C	0.38	0/3066	0.87	10/4169 (0.2%)
1	D	0.37	0/3043	0.90	15/4130 (0.4%)
All	All	0.37	0/12179	0.88	45/16548 (0.3%)

Chiral center outliers are detected by calculating the chiral volume of a chiral center and verifying if the center is modelled as a planar moiety or with the opposite hand. A planarity outlier is detected by checking planarity of atoms in a peptide group, atoms in a mainchain group or atoms of a sidechain that are expected to be planar.

Mol	Chain	#Chirality outliers	#Planarity outliers
1	A	0	1
1	B	0	1
1	C	0	1
1	D	0	1
All	All	0	4

There are no bond length outliers.

The worst 5 of 45 bond angle outliers are listed below:

Mol	Chain	Res	Type	Atoms	Z	Observed(°)	Ideal(°)
1	D	234	VAL	N-CA-C	9.33	117.39	108.15
1	B	113	ALA	N-CA-C	8.90	123.14	111.75
1	B	99	GLN	CA-C-N	7.20	127.20	119.28
1	B	99	GLN	C-N-CA	7.20	127.20	119.28
1	D	128	ARG	CA-C-N	6.62	126.86	119.32

There are no chirality outliers.

All (4) planarity outliers are listed below:

Mol	Chain	Res	Type	Group
1	A	282	TYR	Sidechain
1	B	282	TYR	Sidechain
1	C	282	TYR	Sidechain
1	D	282	TYR	Sidechain

5.2 Too-close contacts [i](#)

In the following table, the Non-H and H(model) columns list the number of non-hydrogen atoms and hydrogen atoms in the chain respectively. The H(added) column lists the number of hydrogen atoms added and optimized by MolProbity. The Clashes column lists the number of clashes within the asymmetric unit, whereas Symm-Clashes lists symmetry-related clashes.

Mol	Chain	Non-H	H(model)	H(added)	Clashes	Symm-Clashes
1	A	2979	0	2820	37	0
1	B	2973	0	2812	37	0
1	C	3005	0	2842	46	0
1	D	2986	0	2840	37	0
2	A	10	0	0	0	0
2	B	10	0	0	0	0
2	C	10	0	0	0	0
2	D	10	0	0	0	0
3	A	54	0	36	1	0
3	B	54	0	36	4	0
3	C	54	0	36	3	0
3	D	54	0	36	1	0
4	A	113	0	0	1	0
4	B	121	0	0	1	0
4	C	119	0	0	1	0
4	D	102	0	0	0	0
All	All	12654	0	11458	154	0

The all-atom clashscore is defined as the number of clashes found per 1000 atoms (including hydrogen atoms). The all-atom clashscore for this structure is 6.

The worst 5 of 154 close contacts within the same asymmetric unit are listed below, sorted by their clash magnitude.

Atom-1	Atom-2	Interatomic distance (Å)	Clash overlap (Å)
1:D:201:SER:O	1:D:201:SER:CA	1.82	1.27
1:D:201:SER:CA	1:D:202:LYS:N	2.20	1.04
1:C:235[B]:PRO:HG3	3:C:3401:CAA:H22	1.44	0.99
1:D:201:SER:O	1:D:202:LYS:N	1.96	0.99

Continued on next page...

Continued from previous page...

Atom-1	Atom-2	Interatomic distance (Å)	Clash overlap (Å)
1:C:36:GLY:O	1:C:238:LYS:HG3	1.83	0.77

There are no symmetry-related clashes.

5.3 Torsion angles [i](#)

5.3.1 Protein backbone [i](#)

In the following table, the Percentiles column shows the percent Ramachandran outliers of the chain as a percentile score with respect to all X-ray entries followed by that with respect to entries of similar resolution.

The Analysed column shows the number of residues for which the backbone conformation was analysed, and the total number of residues.

Mol	Chain	Analysed	Favoured	Allowed	Outliers	Percentiles	
1	A	389/397 (98%)	367 (94%)	21 (5%)	1 (0%)	36	35
1	B	389/397 (98%)	372 (96%)	15 (4%)	2 (0%)	24	21
1	C	392/397 (99%)	373 (95%)	16 (4%)	3 (1%)	16	11
1	D	387/397 (98%)	366 (95%)	19 (5%)	2 (0%)	24	21
All	All	1557/1588 (98%)	1478 (95%)	71 (5%)	8 (0%)	24	21

5 of 8 Ramachandran outliers are listed below:

Mol	Chain	Res	Type
1	A	109	GLU
1	B	109	GLU
1	C	109	GLU
1	C	236	PHE
1	C	389	LEU

5.3.2 Protein sidechains [i](#)

There are no protein residues with a non-rotameric sidechain to report in this entry.

5.3.3 RNA [i](#)

There are no RNA molecules in this entry.

5.4 Non-standard residues in protein, DNA, RNA chains

4 non-standard protein/DNA/RNA residues are modelled in this entry.

In the following table, the Counts columns list the number of bonds (or angles) for which Mogul statistics could be retrieved, the number of bonds (or angles) that are observed in the model and the number of bonds (or angles) that are defined in the Chemical Component Dictionary. The Link column lists molecule types, if any, to which the group is linked. The Z score for a bond length (or angle) is the number of standard deviations the observed value is removed from the expected value. A bond length (or angle) with $|Z| > 2$ is considered an outlier worth inspection. RMSZ is the root-mean-square of all Z scores of the bond lengths (or angles).

Mol	Type	Chain	Res	Link	Bond lengths			Bond angles		
					Counts	RMSZ	# Z > 2	Counts	RMSZ	# Z > 2
1	SCY	C	111[A]	1	7,8,9	0.59	0	4,9,11	0.77	0
1	SCY	D	111[A]	1	7,8,9	0.65	0	4,9,11	0.82	0
1	SCY	B	111[A]	1	7,8,9	0.63	0	4,9,11	0.77	0
1	SCY	A	111[A]	1	7,8,9	0.63	0	4,9,11	0.83	0

In the following table, the Chirals column lists the number of chiral outliers, the number of chiral centers analysed, the number of these observed in the model and the number defined in the Chemical Component Dictionary. Similar counts are reported in the Torsion and Rings columns. '-' means no outliers of that kind were identified.

Mol	Type	Chain	Res	Link	Chirals	Torsions	Rings
1	SCY	C	111[A]	1	-	2/5/7/9	-
1	SCY	D	111[A]	1	-	2/5/7/9	-
1	SCY	B	111[A]	1	-	2/5/7/9	-
1	SCY	A	111[A]	1	-	2/5/7/9	-

There are no bond length outliers.

There are no bond angle outliers.

There are no chirality outliers.

5 of 8 torsion outliers are listed below:

Mol	Chain	Res	Type	Atoms
1	A	111[A]	SCY	OCD-CD-SG-CB
1	A	111[A]	SCY	CE-CD-SG-CB
1	B	111[A]	SCY	OCD-CD-SG-CB
1	B	111[A]	SCY	CE-CD-SG-CB
1	C	111[A]	SCY	OCD-CD-SG-CB

There are no ring outliers.

4 monomers are involved in 15 short contacts:

Mol	Chain	Res	Type	Clashes	Symm-Clashes
1	C	111[A]	SCY	5	0
1	D	111[A]	SCY	2	0
1	B	111[A]	SCY	5	0
1	A	111[A]	SCY	3	0

5.5 Carbohydrates [i](#)

There are no oligosaccharides in this entry.

5.6 Ligand geometry [i](#)

12 ligands are modelled in this entry.

In the following table, the Counts columns list the number of bonds (or angles) for which Mogul statistics could be retrieved, the number of bonds (or angles) that are observed in the model and the number of bonds (or angles) that are defined in the Chemical Component Dictionary. The Link column lists molecule types, if any, to which the group is linked. The Z score for a bond length (or angle) is the number of standard deviations the observed value is removed from the expected value. A bond length (or angle) with $|Z| > 2$ is considered an outlier worth inspection. RMSZ is the root-mean-square of all Z scores of the bond lengths (or angles).

Mol	Type	Chain	Res	Link	Bond lengths			Bond angles		
					Counts	RMSZ	$\# Z > 2$	Counts	RMSZ	$\# Z > 2$
2	SO4	B	2501	-	4,4,4	0.65	0	6,6,6	6.17	1 (16%)
3	CAA	A	1401	-	53,56,56	0.94	3 (5%)	77,83,83	0.81	2 (2%)
2	SO4	A	1501	-	4,4,4	0.52	0	6,6,6	6.15	1 (16%)
2	SO4	C	3501	-	4,4,4	0.75	0	6,6,6	5.97	1 (16%)
2	SO4	A	1502	-	4,4,4	0.38	0	6,6,6	6.06	1 (16%)
3	CAA	B	2401	-	53,56,56	0.93	3 (5%)	77,83,83	0.82	2 (2%)
2	SO4	D	4502	-	4,4,4	0.90	0	6,6,6	6.06	1 (16%)
3	CAA	C	3401	-	53,56,56	0.92	2 (3%)	77,83,83	0.88	2 (2%)
2	SO4	B	2502	-	4,4,4	0.29	0	6,6,6	6.16	1 (16%)
3	CAA	D	4401	-	53,56,56	0.94	2 (3%)	77,83,83	0.85	2 (2%)
2	SO4	D	4501	-	4,4,4	1.08	1 (25%)	6,6,6	5.80	1 (16%)
2	SO4	C	3502	-	4,4,4	0.70	0	6,6,6	6.01	1 (16%)

In the following table, the Chirals column lists the number of chiral outliers, the number of chiral centers analysed, the number of these observed in the model and the number defined in the Chemical Component Dictionary. Similar counts are reported in the Torsion and Rings columns.

'-' means no outliers of that kind were identified.

Mol	Type	Chain	Res	Link	Chirals	Torsions	Rings
3	CAA	C	3401	-	-	19/55/71/71	0/3/3/3
3	CAA	B	2401	-	-	18/55/71/71	0/3/3/3
3	CAA	D	4401	-	-	12/55/71/71	0/3/3/3
3	CAA	A	1401	-	-	18/55/71/71	0/3/3/3

The worst 5 of 11 bond length outliers are listed below:

Mol	Chain	Res	Type	Atoms	Z	Observed(Å)	Ideal(Å)
3	D	4401	CAA	P1A-O3A	3.72	1.63	1.59
3	D	4401	CAA	P2A-O3A	3.71	1.63	1.59
3	C	3401	CAA	P2A-O3A	3.62	1.63	1.59
3	C	3401	CAA	P1A-O3A	3.60	1.63	1.59
3	B	2401	CAA	P2A-O3A	3.57	1.63	1.59

The worst 5 of 16 bond angle outliers are listed below:

Mol	Chain	Res	Type	Atoms	Z	Observed(°)	Ideal(°)
2	B	2501	SO4	O2-S-O1	-15.12	2.56	109.06
2	B	2502	SO4	O2-S-O1	-15.08	2.81	109.06
2	A	1501	SO4	O2-S-O1	-15.05	3.02	109.06
2	D	4502	SO4	O2-S-O1	-14.83	4.59	109.06
2	A	1502	SO4	O2-S-O1	-14.83	4.59	109.06

There are no chirality outliers.

5 of 67 torsion outliers are listed below:

Mol	Chain	Res	Type	Atoms
3	A	1401	CAA	C5B-O5B-P1A-O1A
3	A	1401	CAA	C5B-O5B-P1A-O2A
3	A	1401	CAA	CCP-O6A-P2A-O3A
3	A	1401	CAA	CCP-O6A-P2A-O4A
3	A	1401	CAA	CDP-CBP-CCP-O6A

There are no ring outliers.

4 monomers are involved in 9 short contacts:

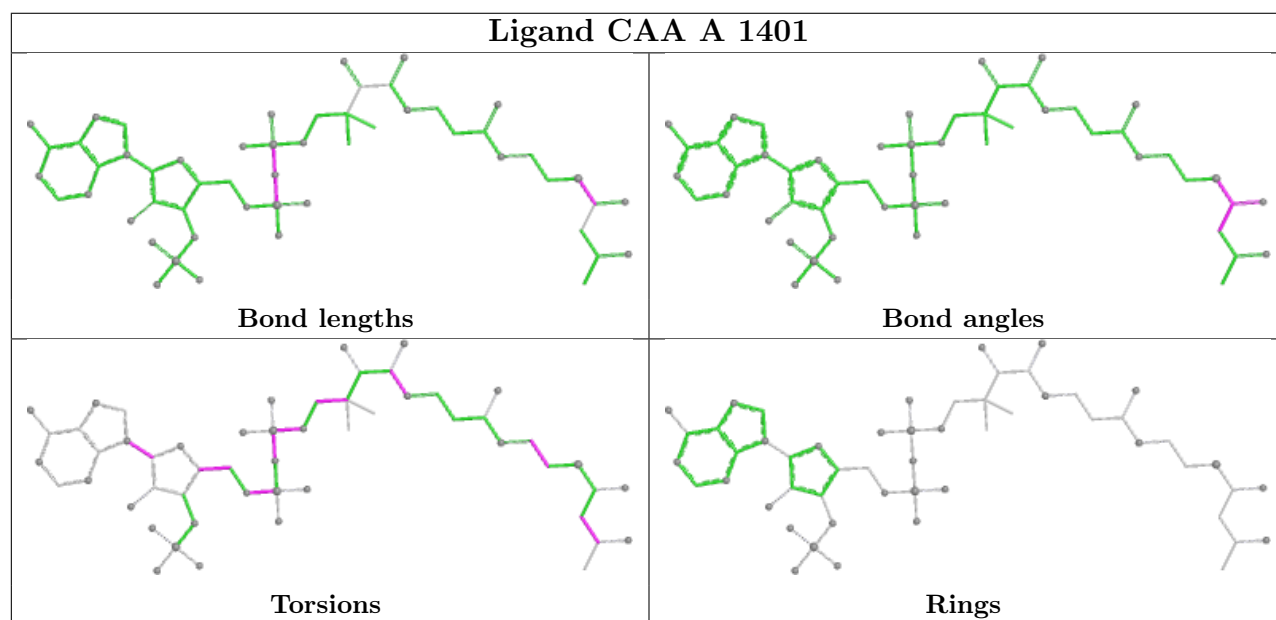
Mol	Chain	Res	Type	Clashes	Symm-Clashes
3	A	1401	CAA	1	0
3	B	2401	CAA	4	0

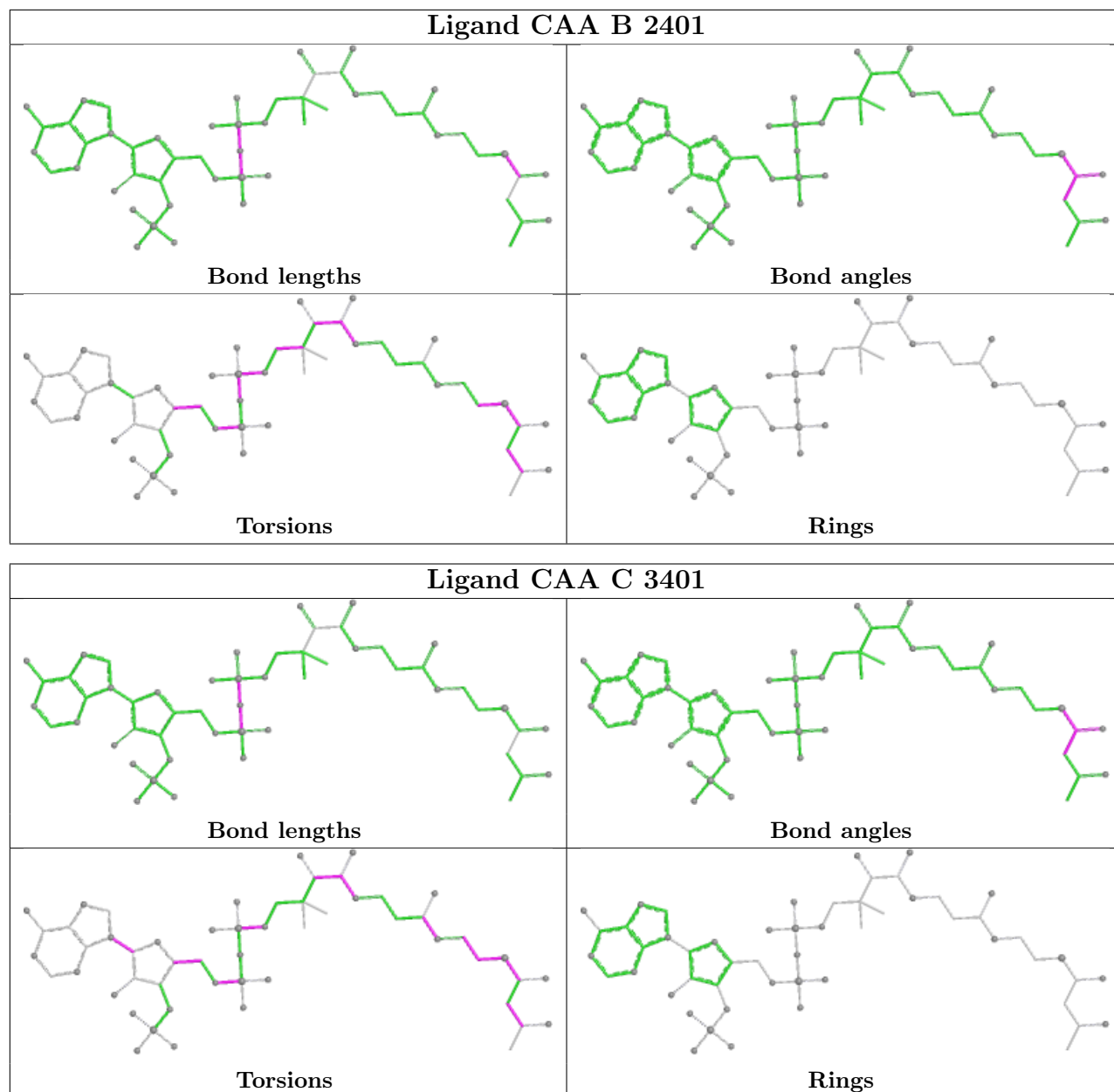
Continued on next page...

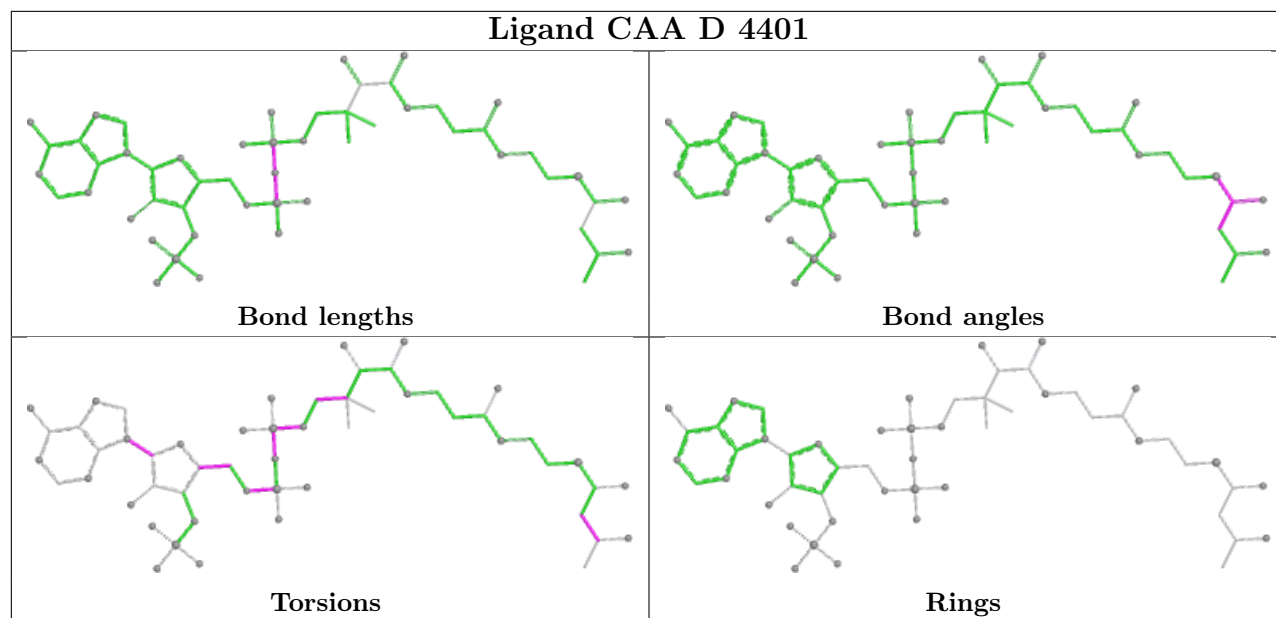
Continued from previous page...

Mol	Chain	Res	Type	Clashes	Symm-Clashes
3	C	3401	CAA	3	0
3	D	4401	CAA	1	0

The following is a two-dimensional graphical depiction of Mogul quality analysis of bond lengths, bond angles, torsion angles, and ring geometry for all instances of the Ligand of Interest. In addition, ligands with molecular weight > 250 and outliers as shown on the validation Tables will also be included. For torsion angles, if less than 5% of the Mogul distribution of torsion angles is within 10 degrees of the torsion angle in question, then that torsion angle is considered an outlier. Any bond that is central to one or more torsion angles identified as an outlier by Mogul will be highlighted in the graph. For rings, the root-mean-square deviation (RMSD) between the ring in question and similar rings identified by Mogul is calculated over all ring torsion angles. If the average RMSD is greater than 60 degrees and the minimal RMSD between the ring in question and any Mogul-identified rings is also greater than 60 degrees, then that ring is considered an outlier. The outliers are highlighted in purple. The color gray indicates Mogul did not find sufficient equivalents in the CSD to analyse the geometry.







5.7 Other polymers [i](#)

There are no such residues in this entry.

5.8 Polymer linkage issues [i](#)

There are no chain breaks in this entry.

6 Fit of model and data [i](#)

6.1 Protein, DNA and RNA chains [i](#)

In the following table, the column labelled ‘#RSRZ> 2’ contains the number (and percentage) of RSRZ outliers, followed by percent RSRZ outliers for the chain as percentile scores relative to all X-ray entries and entries of similar resolution. The OWAB column contains the minimum, median, 95th percentile and maximum values of the occupancy-weighted average B-factor per residue. The column labelled ‘Q< 0.9’ lists the number of (and percentage) of residues with an average occupancy less than 0.9.

Mol	Chain	Analysed	<RSRZ>	#RSRZ>2	OWAB(Å ²)	Q<0.9
1	A	388/397 (97%)	-1.51	0 100 100	7, 21, 35, 48	3 (0%)
1	B	388/397 (97%)	-1.52	0 100 100	8, 21, 35, 44	3 (0%)
1	C	388/397 (97%)	-1.52	0 100 100	7, 21, 35, 46	6 (1%)
1	D	388/397 (97%)	-1.52	0 100 100	7, 21, 35, 50	3 (0%)
All	All	1552/1588 (97%)	-1.52	0 100 100	7, 21, 35, 50	15 (0%)

There are no RSRZ outliers to report.

6.2 Non-standard residues in protein, DNA, RNA chains [i](#)

In the following table, the Atoms column lists the number of modelled atoms in the group and the number defined in the chemical component dictionary. The B-factors column lists the minimum, median, 95th percentile and maximum values of B factors of atoms in the group. The column labelled ‘Q< 0.9’ lists the number of atoms with occupancy less than 0.9.

Mol	Type	Chain	Res	Atoms	RSCC	RSR	B-factors(Å ²)	Q<0.9
1	SCY	D	111[A]	9/10	0.98	0.04	15,16,28,29	9
1	SCY	C	111[A]	9/10	0.99	0.03	13,16,29,31	9
1	SCY	A	111[A]	9/10	0.99	0.04	15,17,27,29	9
1	SCY	B	111[A]	9/10	1.00	0.03	12,16,28,28	9

6.3 Carbohydrates [i](#)

There are no oligosaccharides in this entry.

6.4 Ligands

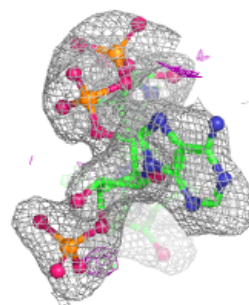
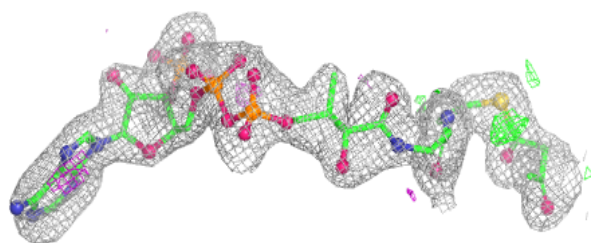
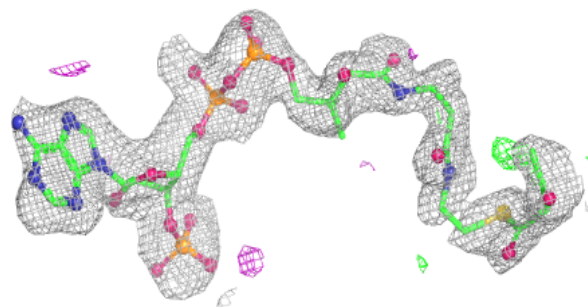
In the following table, the Atoms column lists the number of modelled atoms in the group and the number defined in the chemical component dictionary. The B-factors column lists the minimum, median, 95th percentile and maximum values of B factors of atoms in the group. The column labelled 'Q< 0.9' lists the number of atoms with occupancy less than 0.9.

Mol	Type	Chain	Res	Atoms	RSCC	RSR	B-factors(Å ²)	Q<0.9
2	SO4	D	4502	5/5	0.97	0.05	82,82,83,84	0
2	SO4	C	3502	5/5	0.98	0.05	90,90,91,95	0
2	SO4	A	1502	5/5	0.98	0.06	78,78,78,83	0
2	SO4	B	2502	5/5	0.99	0.05	81,82,82,87	0
2	SO4	C	3501	5/5	0.99	0.05	49,50,51,51	0
2	SO4	A	1501	5/5	0.99	0.06	45,47,48,48	0
2	SO4	D	4501	5/5	0.99	0.05	52,53,53,56	0
2	SO4	B	2501	5/5	0.99	0.06	44,44,46,50	0
3	CAA	A	1401	54/54	0.99	0.04	35,43,55,56	0
3	CAA	B	2401	54/54	0.99	0.04	37,50,61,62	0
3	CAA	C	3401	54/54	0.99	0.04	37,47,56,57	0
3	CAA	D	4401	54/54	0.99	0.04	26,38,54,55	0

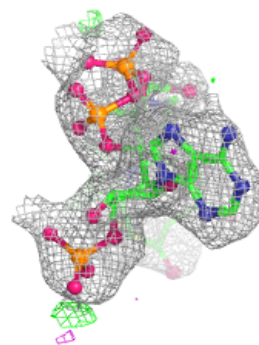
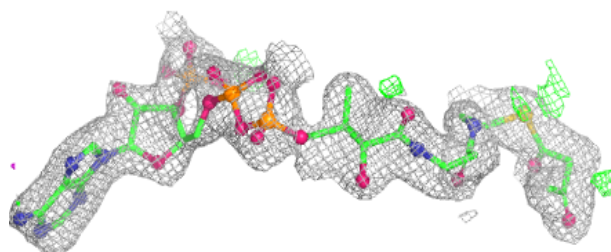
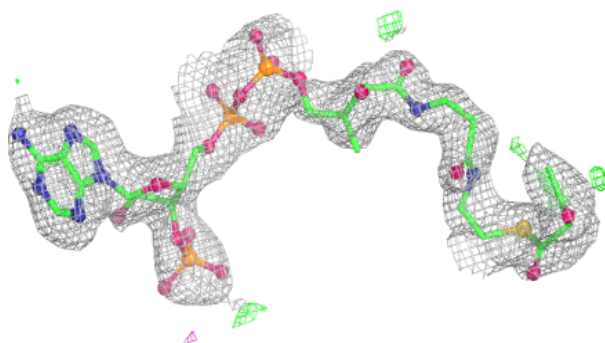
The following is a graphical depiction of the model fit to experimental electron density of all instances of the Ligand of Interest. In addition, ligands with molecular weight > 250 and outliers as shown on the geometry validation Tables will also be included. Each fit is shown from different orientation to approximate a three-dimensional view.

Electron density around CAA A 1401:

$2mF_o-DF_c$ (at 0.7 rmsd) in gray
 mF_o-DF_c (at 3 rmsd) in purple (negative)
and green (positive)

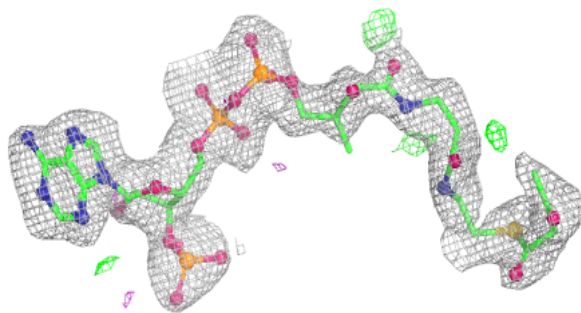
**Electron density around CAA B 2401:**

$2mF_o-DF_c$ (at 0.7 rmsd) in gray
 mF_o-DF_c (at 3 rmsd) in purple (negative)
and green (positive)

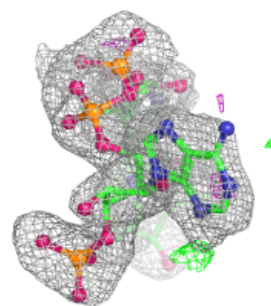
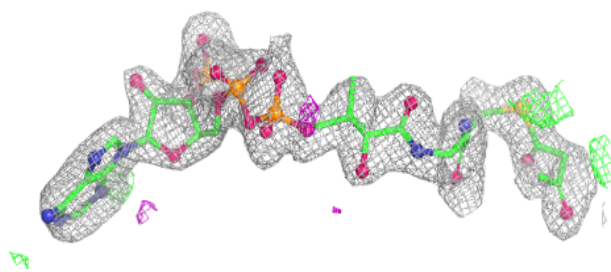
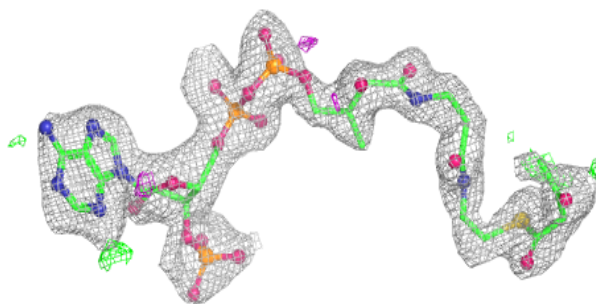


Electron density around CAA C 3401:

$2mF_o-DF_c$ (at 0.7 rmsd) in gray
 mF_o-DF_c (at 3 rmsd) in purple (negative)
and green (positive)

**Electron density around CAA D 4401:**

$2mF_o-DF_c$ (at 0.7 rmsd) in gray
 mF_o-DF_c (at 3 rmsd) in purple (negative)
and green (positive)



6.5 Other polymers [i](#)

There are no such residues in this entry.