



wwPDB X-ray Structure Validation Summary Report

Mar 20, 2026 – 07:56 PM UTC

PDB ID : 8XTG / pdb_00008xtg
Title : Crystal structure of methyltransferase MpaG' in complex with SAH and DMMPA
Authors : You, C.; Pan, Y.J.; Li, S.Y.; Feng, Y.G.
Deposited on : 2024-01-10
Resolution : 2.00 Å (reported)

This is a wwPDB X-ray Structure Validation Summary Report for a publicly released PDB entry.

We welcome your comments at validation@mail.wwpdb.org

A user guide is available at

<https://www.wwpdb.org/validation/2017/XrayValidationReportHelp>

with specific help available everywhere you see the  symbol.

The types of validation reports are described at

<http://www.wwpdb.org/validation/2017/FAQs#types>.

The following versions of software and data (see [references](#) ) were used in the production of this report:

MolProbity : 4-5-2 with Phenix2.0
Mogul : 2022.3.0, CSD as543be (2022)
Xtriage (Phenix) : 2.0
EDS : 3.0
Buster-report : wwPDB partial adaption of 1.1.7 (2018)
Percentile statistics : 20250101.v01 (using entries in the PDB archive January 1st 2025)
CCP4 : 9.0.010 (Gargrove)
Density-Fitness : 1.0.12
Ideal geometry (proteins) : Engh & Huber (2001)
Ideal geometry (DNA, RNA) : Parkinson et al. (1996)
Validation Pipeline (wwPDB-VP) : 2.49

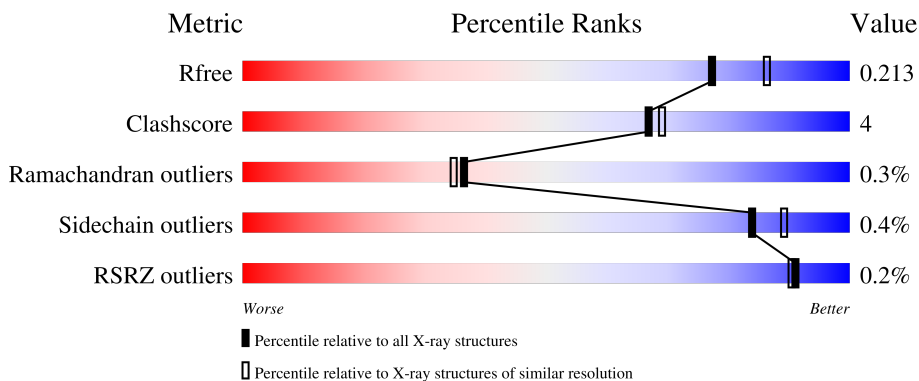
1 Overall quality at a glance

The following experimental techniques were used to determine the structure:

X-RAY DIFFRACTION

The reported resolution of this entry is 2.00 Å.

Percentile scores (ranging between 0-100) for global validation metrics of the entry are shown in the following graphic. The table shows the number of entries on which the scores are based.



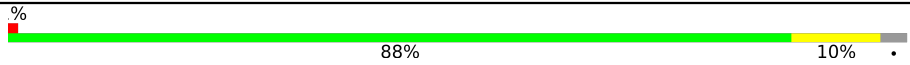
Metric	Whole archive (#Entries)	Similar resolution (#Entries, resolution range(Å))
R_{free}	180053	10052 (2.00-2.00)
Clashscore	190562	11152 (2.00-2.00)
Ramachandran outliers	187476	11031 (2.00-2.00)
Sidechain outliers	187428	11029 (2.00-2.00)
RSRZ outliers	180081	10067 (2.00-2.00)

The table below summarises the geometric issues observed across the polymeric chains and their fit to the electron density. The red, orange, yellow and green segments of the lower bar indicate the fraction of residues that contain outliers for ≥ 3 , 2, 1 and 0 types of geometric quality criteria respectively. A grey segment represents the fraction of residues that are not modelled. The numeric value for each fraction is indicated below the corresponding segment, with a dot representing fractions $\leq 5\%$. The upper red bar (where present) indicates the fraction of residues that have poor fit to the electron density. The numeric value is given above the bar.

Mol	Chain	Length	Quality of chain
1	A	400	 89% 10%
1	B	400	 90% 9%
1	C	400	 90% 8%
1	D	400	 90% 8%
1	E	400	 86% 12%

Continued on next page...

Continued from previous page...

Mol	Chain	Length	Quality of chain
1	F	400	 <p>A horizontal bar chart representing the quality of the chain. The bar is 100% long. It is divided into three segments: a small red segment at the beginning (approximately 2%), a large green segment (88%), and a small yellow segment at the end (10%). A small black dot is located at the far right end of the bar. The percentage values '88%' and '10%' are printed below the green and yellow segments, respectively. A '%' symbol is located at the top left of the bar.</p>

2 Entry composition [i](#)

There are 4 unique types of molecules in this entry. The entry contains 20311 atoms, of which 0 are hydrogens and 0 are deuteriums.

In the tables below, the ZeroOcc column contains the number of atoms modelled with zero occupancy, the AltConf column contains the number of residues with at least one atom in alternate conformation and the Trace column contains the number of residues modelled with at most 2 atoms.

- Molecule 1 is a protein called O-methyltransferase mpaG'.

Mol	Chain	Residues	Atoms					ZeroOcc	AltConf	Trace
			Total	C	N	O	S			
1	A	394	3048	1932	526	579	11	0	0	0
1	B	395	3061	1940	528	581	12	0	1	0
1	C	393	3042	1929	525	577	11	0	0	0
1	D	395	3053	1935	527	580	11	0	0	0
1	E	391	3030	1921	523	575	11	0	0	0
1	F	389	3013	1912	521	569	11	0	0	0

There are 24 discrepancies between the modelled and reference sequences:

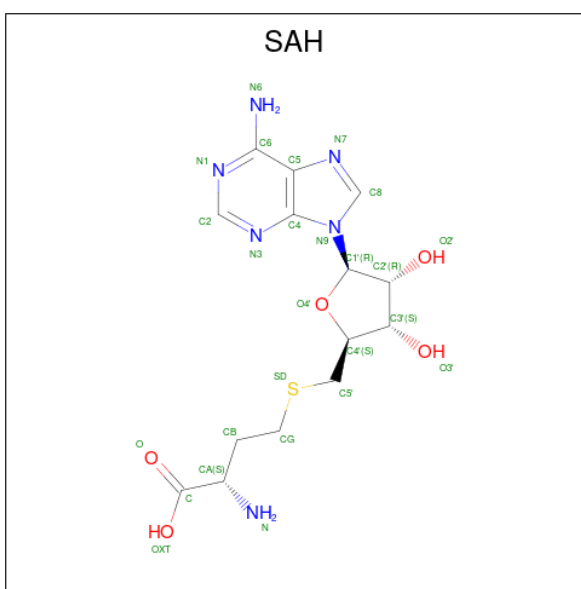
Chain	Residue	Modelled	Actual	Comment	Reference
A	-1	GLY	-	expression tag	UNP A0A0B5L781
A	0	ALA	-	expression tag	UNP A0A0B5L781
A	1	MET	-	expression tag	UNP A0A0B5L781
A	2	GLY	-	expression tag	UNP A0A0B5L781
B	-1	GLY	-	expression tag	UNP A0A0B5L781
B	0	ALA	-	expression tag	UNP A0A0B5L781
B	1	MET	-	expression tag	UNP A0A0B5L781
B	2	GLY	-	expression tag	UNP A0A0B5L781
C	-1	GLY	-	expression tag	UNP A0A0B5L781
C	0	ALA	-	expression tag	UNP A0A0B5L781
C	1	MET	-	expression tag	UNP A0A0B5L781
C	2	GLY	-	expression tag	UNP A0A0B5L781
D	-1	GLY	-	expression tag	UNP A0A0B5L781
D	0	ALA	-	expression tag	UNP A0A0B5L781
D	1	MET	-	expression tag	UNP A0A0B5L781
D	2	GLY	-	expression tag	UNP A0A0B5L781
E	-1	GLY	-	expression tag	UNP A0A0B5L781

Continued on next page...

Continued from previous page...

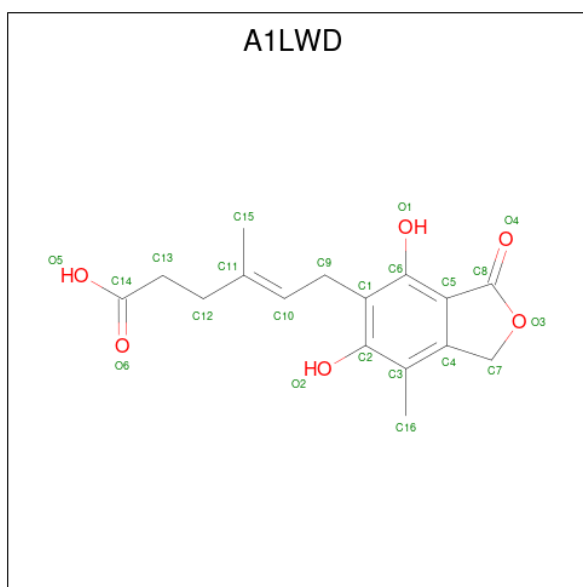
Chain	Residue	Modelled	Actual	Comment	Reference
E	0	ALA	-	expression tag	UNP A0A0B5L781
E	1	MET	-	expression tag	UNP A0A0B5L781
E	2	GLY	-	expression tag	UNP A0A0B5L781
F	-1	GLY	-	expression tag	UNP A0A0B5L781
F	0	ALA	-	expression tag	UNP A0A0B5L781
F	1	MET	-	expression tag	UNP A0A0B5L781
F	2	GLY	-	expression tag	UNP A0A0B5L781

- Molecule 2 is S-ADENOSYL-L-HOMOCYSTEINE (CCD ID: SAH) (formula: C₁₄H₂₀N₆O₅S) (labeled as "Ligand of Interest" by depositor).



Mol	Chain	Residues	Atoms					ZeroOcc	AltConf
			Total	C	N	O	S		
2	A	1	Total	C	N	O	S	0	0
			26	14	6	5	1		
2	B	1	Total	C	N	O	S	0	0
			26	14	6	5	1		
2	C	1	Total	C	N	O	S	0	0
			26	14	6	5	1		
2	D	1	Total	C	N	O	S	0	0
			26	14	6	5	1		
2	E	1	Total	C	N	O	S	0	0
			26	14	6	5	1		
2	F	1	Total	C	N	O	S	0	0
			26	14	6	5	1		

- Molecule 3 is O-desmethyl mycophenolic acid (CCD ID: A1LWD) (formula: C₁₆H₁₈O₆) (labeled as "Ligand of Interest" by depositor).



Mol	Chain	Residues	Atoms		ZeroOcc	AltConf
3	A	1	Total	C O	0	0
			22	16 6		
3	B	1	Total	C O	0	0
			22	16 6		
3	C	1	Total	C O	0	0
			22	16 6		
3	D	1	Total	C O	0	0
			22	16 6		
3	E	1	Total	C O	0	0
			22	16 6		
3	F	1	Total	C O	0	0
			22	16 6		

- Molecule 4 is water.

Mol	Chain	Residues	Atoms		ZeroOcc	AltConf
4	A	382	Total	O	0	0
			382	382		
4	B	407	Total	O	0	0
			407	407		
4	C	383	Total	O	0	0
			383	383		
4	D	356	Total	O	0	0
			356	356		
4	E	142	Total	O	0	0
			142	142		
4	F	106	Total	O	0	0
			106	106		

3 Residue-property plots [i](#)


These plots are drawn for all protein, RNA, DNA and oligosaccharide chains in the entry. The first graphic for a chain summarises the proportions of the various outlier classes displayed in the second graphic. The second graphic shows the sequence view annotated by issues in geometry and electron density. Residues are color-coded according to the number of geometric quality criteria for which they contain at least one outlier: green = 0, yellow = 1, orange = 2 and red = 3 or more. A red dot above a residue indicates a poor fit to the electron density ($RSRZ > 2$). Stretches of 2 or more consecutive residues without any outlier are shown as a green connector. Residues present in the sample, but not in the model, are shown in grey.

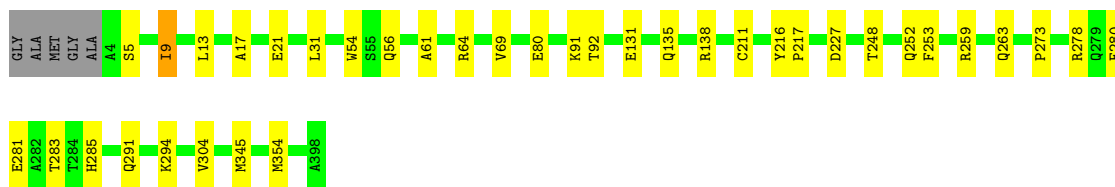
- Molecule 1: O-methyltransferase mpaG'

Chain A:  89% 10%




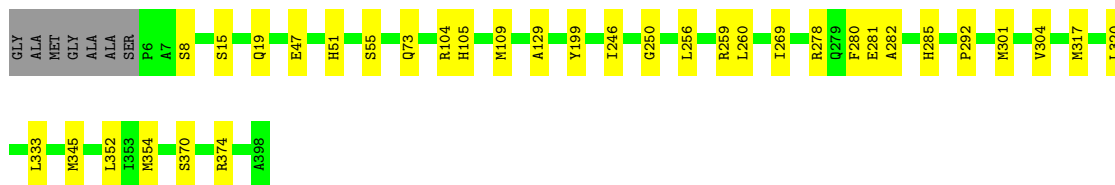
- Molecule 1: O-methyltransferase mpaG'

Chain B:  90% 9%




- Molecule 1: O-methyltransferase mpaG'

Chain C:  90% 8%



- Molecule 1: O-methyltransferase mpaG'

Chain D:  90% 8%





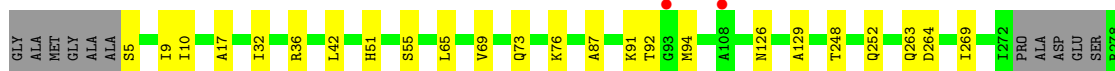
- Molecule 1: O-methyltransferase mpaG'

Chain E: 86% 12%



- Molecule 1: O-methyltransferase mpaG'

Chain F: 88% 10%



4 Data and refinement statistics i

Property	Value	Source
Space group	P 32	Depositor
Cell constants a, b, c, α , β , γ	199.54Å 199.54Å 67.15Å 90.00° 90.00° 120.00°	Depositor
Resolution (Å)	47.93 – 2.00 47.93 – 2.00	Depositor EDS
% Data completeness (in resolution range)	99.9 (47.93-2.00) 100.0 (47.93-2.00)	Depositor EDS
R_{merge}	0.13	Depositor
R_{sym}	(Not available)	Depositor
$\langle I/\sigma(I) \rangle$ ¹	153.50 (at 2.00Å)	Xtrriage
Refinement program	PHENIX 1.20.1_4487	Depositor
R, R_{free}	0.162 , 0.211 (Not available) , 0.213	Depositor DCC
R_{free} test set	10411 reflections (5.13%)	wwPDB-VP
Wilson B-factor (Å ²)	23.4	Xtrriage
Anisotropy	0.491	Xtrriage
Bulk solvent k_{sol} (e/Å ³), B_{sol} (Å ²)	0.36 , 32.5	EDS
L-test for twinning ²	$\langle L \rangle = 0.45$, $\langle L^2 \rangle = 0.27$	Xtrriage
Estimated twinning fraction	0.029 for -h,-k,l 0.389 for h,-h-k,-l 0.028 for -k,-h,-l	Xtrriage
F_o, F_c correlation	0.96	EDS
Total number of atoms	20311	wwPDB-VP
Average B, all atoms (Å ²)	30.0	wwPDB-VP

Xtrriage's analysis on translational NCS is as follows: *The largest off-origin peak in the Patterson function is 3.06% of the height of the origin peak. No significant pseudotranslation is detected.*

¹Intensities estimated from amplitudes.

²Theoretical values of $\langle |L| \rangle$, $\langle L^2 \rangle$ for acentric reflections are 0.5, 0.333 respectively for untwinned datasets, and 0.375, 0.2 for perfectly twinned datasets.

5 Model quality [i](#)

5.1 Standard geometry [i](#)

Bond lengths and bond angles in the following residue types are not validated in this section: SAH, A1LWD

The Z score for a bond length (or angle) is the number of standard deviations the observed value is removed from the expected value. A bond length (or angle) with $|Z| > 5$ is considered an outlier worth inspection. RMSZ is the root-mean-square of all Z scores of the bond lengths (or angles).

Mol	Chain	Bond lengths		Bond angles	
		RMSZ	# Z >5	RMSZ	# Z >5
1	A	0.17	0/3120	0.36	0/4239
1	B	0.16	0/3133	0.37	0/4256
1	C	0.17	0/3114	0.37	0/4230
1	D	0.16	0/3125	0.36	0/4246
1	E	0.13	0/3101	0.29	0/4212
1	F	0.13	0/3083	0.30	0/4186
All	All	0.16	0/18676	0.34	0/25369

There are no bond length outliers.

There are no bond angle outliers.

There are no chirality outliers.

There are no planarity outliers.

5.2 Too-close contacts [i](#)

In the following table, the Non-H and H(model) columns list the number of non-hydrogen atoms and hydrogen atoms in the chain respectively. The H(added) column lists the number of hydrogen atoms added and optimized by MolProbity. The Clashes column lists the number of clashes within the asymmetric unit, whereas Symm-Clashes lists symmetry-related clashes.

Mol	Chain	Non-H	H(model)	H(added)	Clashes	Symm-Clashes
1	A	3048	0	2967	25	0
1	B	3061	0	2980	23	0
1	C	3042	0	2963	23	0
1	D	3053	0	2972	29	0
1	E	3030	0	2950	30	0
1	F	3013	0	2939	27	0
2	A	26	0	19	2	0

Continued on next page...

Continued from previous page...

Mol	Chain	Non-H	H(model)	H(added)	Clashes	Symm-Clashes
2	B	26	0	19	0	0
2	C	26	0	19	0	0
2	D	26	0	19	2	0
2	E	26	0	19	0	0
2	F	26	0	19	2	0
3	A	22	0	0	1	0
3	B	22	0	0	1	0
3	C	22	0	0	2	0
3	D	22	0	0	2	0
3	E	22	0	0	1	0
3	F	22	0	0	1	0
4	A	382	0	0	2	0
4	B	407	0	0	2	0
4	C	383	0	0	1	0
4	D	356	0	0	4	0
4	E	142	0	0	2	0
4	F	106	0	0	0	0
All	All	20311	0	17885	136	0

The all-atom clashscore is defined as the number of clashes found per 1000 atoms (including hydrogen atoms). The all-atom clashscore for this structure is 4.

The worst 5 of 136 close contacts within the same asymmetric unit are listed below, sorted by their clash magnitude.

Atom-1	Atom-2	Interatomic distance (Å)	Clash overlap (Å)
1:D:73:GLN:HG3	1:D:129:ALA:HB1	1.68	0.75
1:C:73:GLN:HG3	1:C:129:ALA:HB1	1.71	0.73
1:D:145:ARG:NH2	4:D:504:HOH:O	2.26	0.68
1:E:345:MET:HE1	1:F:51:HIS:HD2	1.60	0.67
1:F:301:MET:HE3	1:F:305:PRO:HD3	1.80	0.63

There are no symmetry-related clashes.

5.3 Torsion angles [i](#)

5.3.1 Protein backbone [i](#)

In the following table, the Percentiles column shows the percent Ramachandran outliers of the chain as a percentile score with respect to all X-ray entries followed by that with respect to entries of similar resolution.

The Analysed column shows the number of residues for which the backbone conformation was analysed, and the total number of residues.

Mol	Chain	Analysed	Favoured	Allowed	Outliers	Percentiles	
1	A	392/400 (98%)	382 (97%)	9 (2%)	1 (0%)	36	35
1	B	394/400 (98%)	384 (98%)	9 (2%)	1 (0%)	36	35
1	C	391/400 (98%)	383 (98%)	7 (2%)	1 (0%)	36	35
1	D	393/400 (98%)	383 (98%)	9 (2%)	1 (0%)	36	35
1	E	389/400 (97%)	379 (97%)	9 (2%)	1 (0%)	36	35
1	F	385/400 (96%)	369 (96%)	15 (4%)	1 (0%)	36	35
All	All	2344/2400 (98%)	2280 (97%)	58 (2%)	6 (0%)	36	35

5 of 6 Ramachandran outliers are listed below:

Mol	Chain	Res	Type
1	A	304	VAL
1	B	304	VAL
1	C	304	VAL
1	D	304	VAL
1	E	304	VAL

5.3.2 Protein sidechains [i](#)

In the following table, the Percentiles column shows the percent sidechain outliers of the chain as a percentile score with respect to all X-ray entries followed by that with respect to entries of similar resolution.

The Analysed column shows the number of residues for which the sidechain conformation was analysed, and the total number of residues.

Mol	Chain	Analysed	Rotameric	Outliers	Percentiles	
1	A	321/322 (100%)	318 (99%)	3 (1%)	70	78
1	B	322/322 (100%)	319 (99%)	3 (1%)	70	78
1	C	320/322 (99%)	319 (100%)	1 (0%)	86	91
1	D	321/322 (100%)	321 (100%)	0	100	100
1	E	319/322 (99%)	318 (100%)	1 (0%)	86	91
1	F	317/322 (98%)	317 (100%)	0	100	100
All	All	1920/1932 (99%)	1912 (100%)	8 (0%)	84	89

5 of 8 residues with a non-rotameric sidechain are listed below:

Mol	Chain	Res	Type
1	E	392	LEU
1	C	8	SER
1	B	345[A]	MET
1	B	9	ILE
1	B	345[B]	MET

Sometimes sidechains can be flipped to improve hydrogen bonding and reduce clashes. 5 of 14 such sidechains are listed below:

Mol	Chain	Res	Type
1	D	213	ASN
1	D	279	GLN
1	F	279	GLN
1	F	126	ASN
1	F	189	ASN

5.3.3 RNA [i](#)

There are no RNA molecules in this entry.

5.4 Non-standard residues in protein, DNA, RNA chains [i](#)

There are no non-standard protein/DNA/RNA residues in this entry.

5.5 Carbohydrates [i](#)

There are no oligosaccharides in this entry.

5.6 Ligand geometry [i](#)

12 ligands are modelled in this entry.

In the following table, the Counts columns list the number of bonds (or angles) for which Mogul statistics could be retrieved, the number of bonds (or angles) that are observed in the model and the number of bonds (or angles) that are defined in the Chemical Component Dictionary. The Link column lists molecule types, if any, to which the group is linked. The Z score for a bond length (or angle) is the number of standard deviations the observed value is removed from the expected value. A bond length (or angle) with $|Z| > 2$ is considered an outlier worth inspection. RMSZ is the root-mean-square of all Z scores of the bond lengths (or angles).

Mol	Type	Chain	Res	Link	Bond lengths			Bond angles		
					Counts	RMSZ	# Z > 2	Counts	RMSZ	# Z > 2
2	SAH	F	401	-	27,28,28	1.08	4 (14%)	36,40,40	1.98	9 (25%)
3	A1LWD	F	402	-	23,23,23	0.62	0	33,33,33	0.70	0
2	SAH	E	401	-	27,28,28	1.09	4 (14%)	36,40,40	2.02	10 (27%)
3	A1LWD	D	402	-	23,23,23	0.61	0	33,33,33	0.77	1 (3%)
2	SAH	A	401	-	27,28,28	1.04	4 (14%)	36,40,40	1.95	10 (27%)
3	A1LWD	E	402	-	23,23,23	0.61	0	33,33,33	0.75	1 (3%)
3	A1LWD	C	402	-	23,23,23	0.62	0	33,33,33	0.82	1 (3%)
3	A1LWD	A	402	-	23,23,23	0.61	0	33,33,33	0.78	1 (3%)
2	SAH	D	401	-	27,28,28	1.04	5 (18%)	36,40,40	2.00	10 (27%)
2	SAH	B	401	-	27,28,28	1.04	4 (14%)	36,40,40	1.98	10 (27%)
3	A1LWD	B	402	-	23,23,23	0.64	0	33,33,33	0.78	1 (3%)
2	SAH	C	401	-	27,28,28	1.07	4 (14%)	36,40,40	1.98	10 (27%)

In the following table, the Chirals column lists the number of chiral outliers, the number of chiral centers analysed, the number of these observed in the model and the number defined in the Chemical Component Dictionary. Similar counts are reported in the Torsion and Rings columns. '-' means no outliers of that kind were identified.

Mol	Type	Chain	Res	Link	Chirals	Torsions	Rings
2	SAH	F	401	-	-	2/15/31/31	0/3/3/3
3	A1LWD	F	402	-	-	0/10/19/19	0/2/2/2
2	SAH	E	401	-	-	2/15/31/31	0/3/3/3
3	A1LWD	D	402	-	-	0/10/19/19	0/2/2/2
2	SAH	A	401	-	-	0/15/31/31	0/3/3/3
3	A1LWD	E	402	-	-	2/10/19/19	0/2/2/2
3	A1LWD	C	402	-	-	1/10/19/19	0/2/2/2
3	A1LWD	A	402	-	-	0/10/19/19	0/2/2/2
2	SAH	D	401	-	-	2/15/31/31	0/3/3/3
2	SAH	B	401	-	-	0/15/31/31	0/3/3/3
3	A1LWD	B	402	-	-	0/10/19/19	0/2/2/2
2	SAH	C	401	-	-	0/15/31/31	0/3/3/3

The worst 5 of 25 bond length outliers are listed below:

Mol	Chain	Res	Type	Atoms	Z	Observed(Å)	Ideal(Å)
2	F	401	SAH	C2-N1	2.62	1.38	1.33
2	C	401	SAH	C2-N3	2.58	1.38	1.33
2	C	401	SAH	C2-N1	2.57	1.38	1.33
2	A	401	SAH	C2-N1	2.57	1.38	1.33

Continued on next page...

Continued from previous page...

Mol	Chain	Res	Type	Atoms	Z	Observed(Å)	Ideal(Å)
2	E	401	SAH	C2-N1	2.55	1.38	1.33

The worst 5 of 64 bond angle outliers are listed below:

Mol	Chain	Res	Type	Atoms	Z	Observed(°)	Ideal(°)
2	E	401	SAH	N3-C2-N1	-5.55	120.18	128.58
2	B	401	SAH	N3-C2-N1	-5.47	120.31	128.58
2	C	401	SAH	N3-C2-N1	-5.43	120.37	128.58
2	D	401	SAH	N3-C2-N1	-5.38	120.44	128.58
2	A	401	SAH	N3-C2-N1	-5.27	120.61	128.58

There are no chirality outliers.

5 of 9 torsion outliers are listed below:

Mol	Chain	Res	Type	Atoms
2	F	401	SAH	C-CA-CB-CG
2	F	401	SAH	CB-CG-SD-C5'
2	D	401	SAH	O-C-CA-N
2	D	401	SAH	OXT-C-CA-N
3	E	402	A1LWD	C12-C13-C14-O5

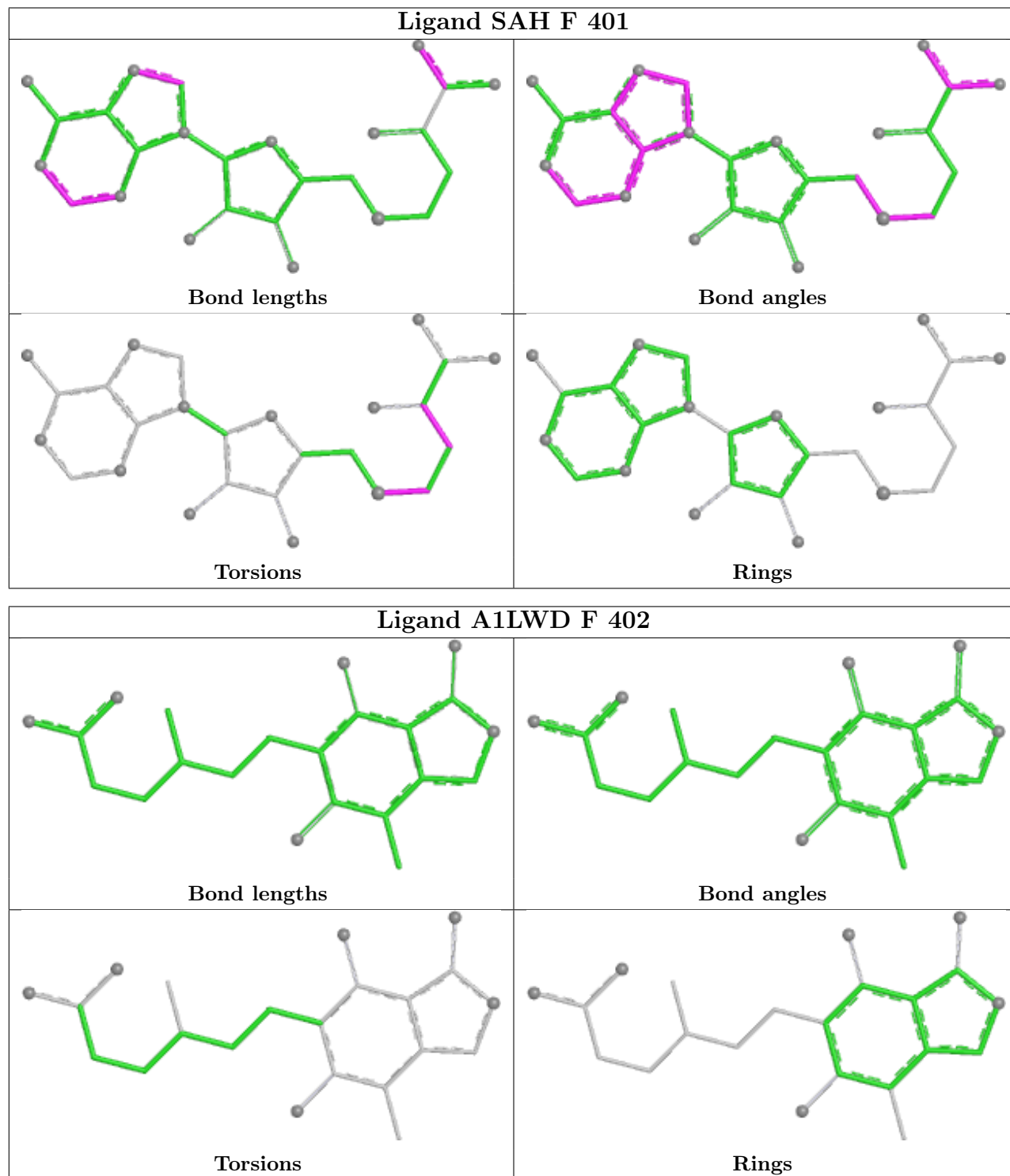
There are no ring outliers.

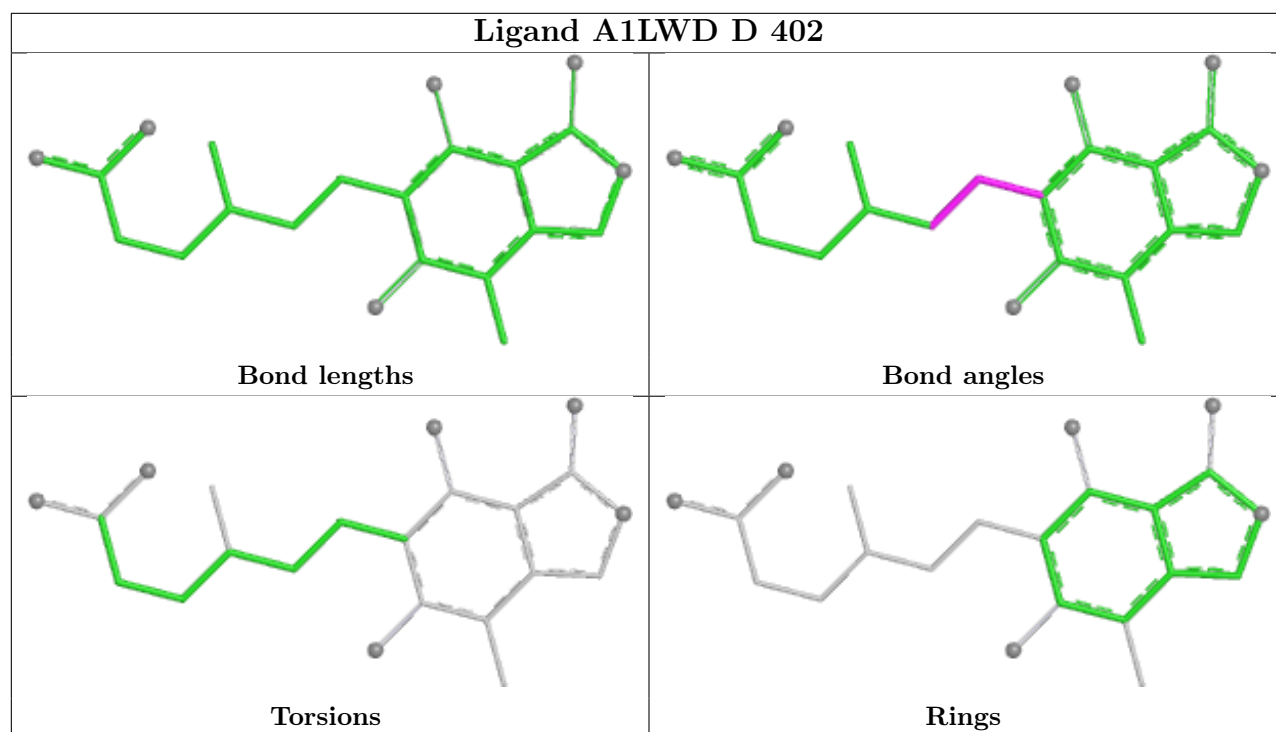
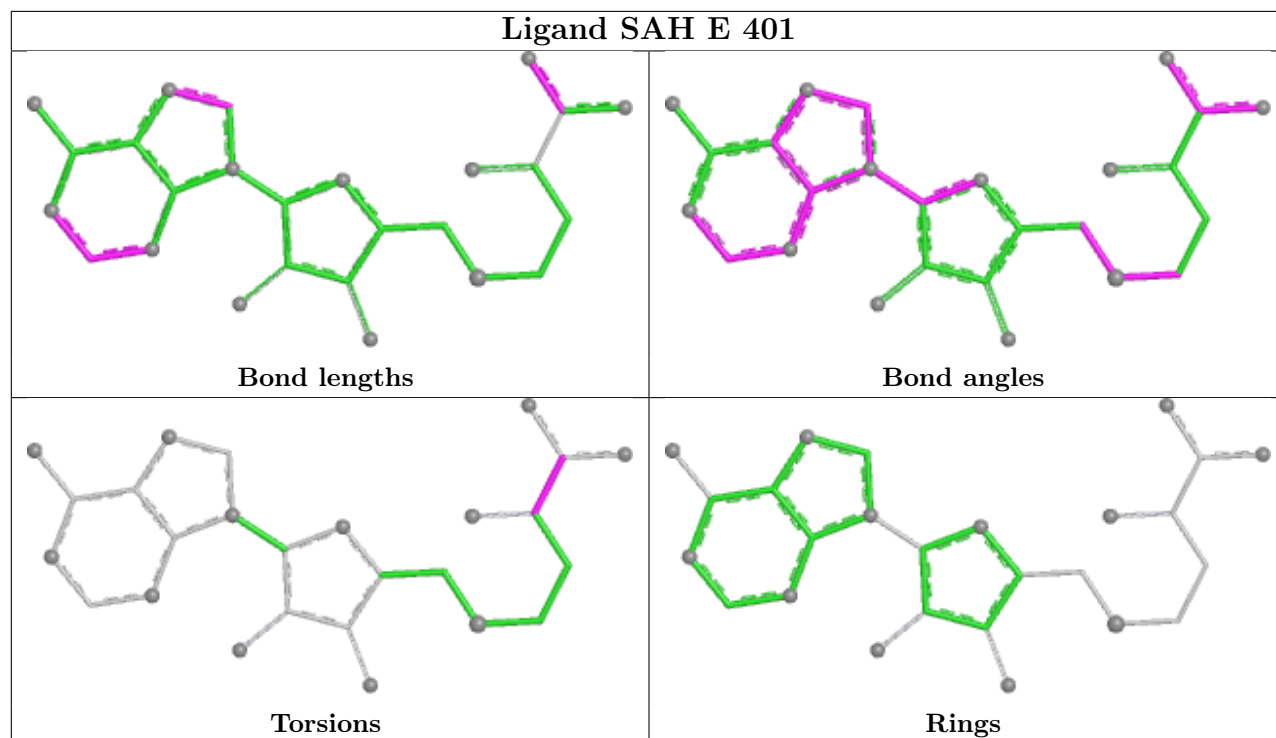
9 monomers are involved in 14 short contacts:

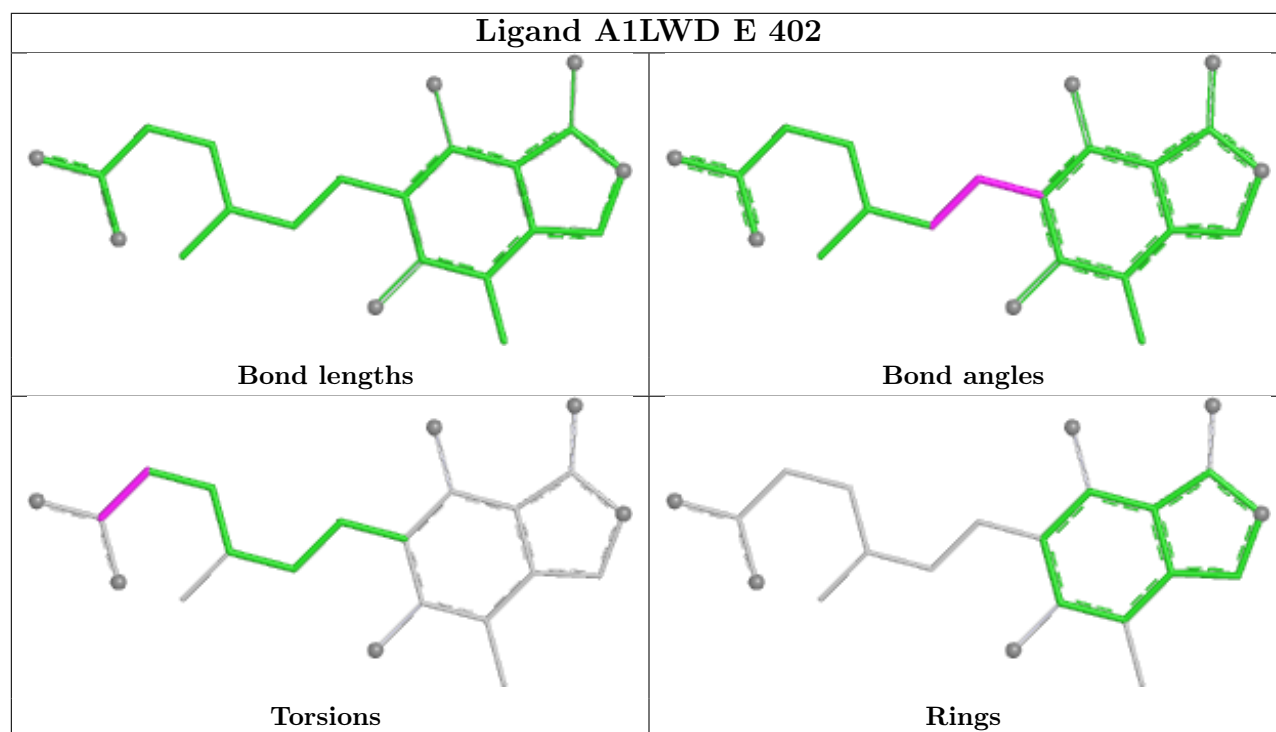
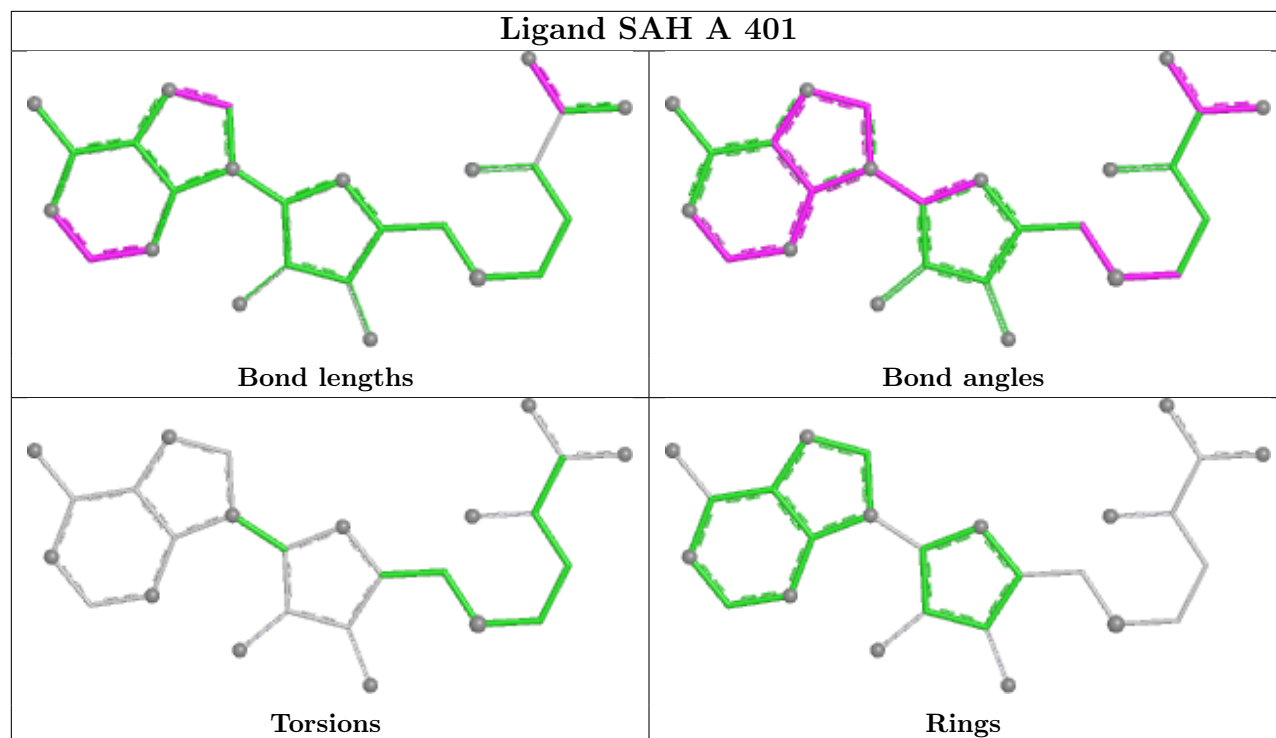
Mol	Chain	Res	Type	Clashes	Symm-Clashes
2	F	401	SAH	2	0
3	F	402	A1LWD	1	0
3	D	402	A1LWD	2	0
2	A	401	SAH	2	0
3	E	402	A1LWD	1	0
3	C	402	A1LWD	2	0
3	A	402	A1LWD	1	0
2	D	401	SAH	2	0
3	B	402	A1LWD	1	0

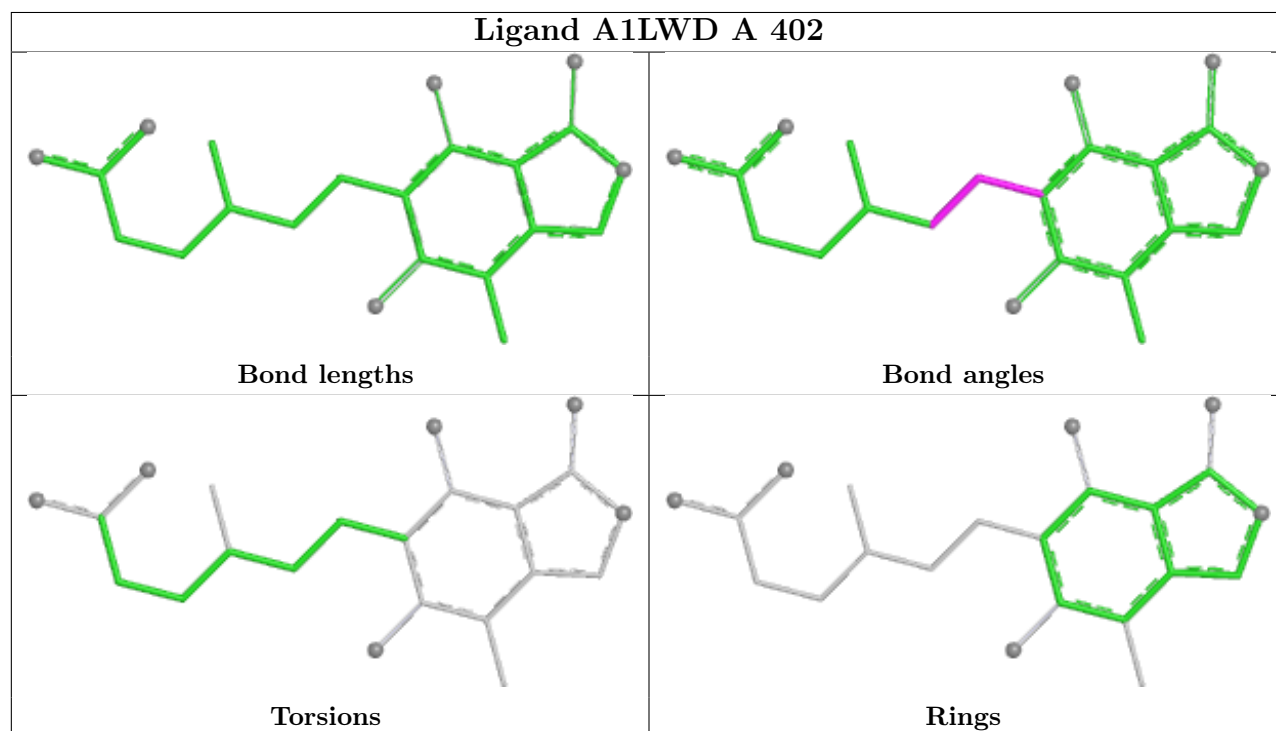
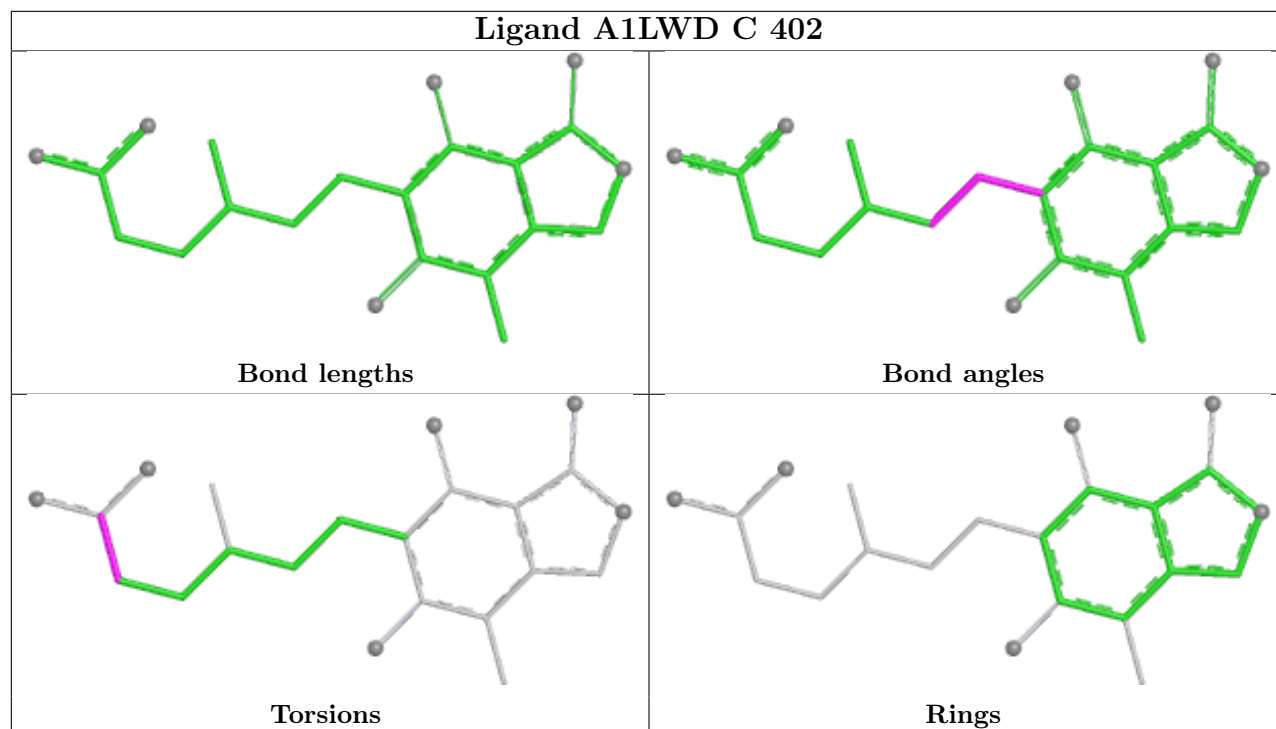
The following is a two-dimensional graphical depiction of Mogul quality analysis of bond lengths, bond angles, torsion angles, and ring geometry for all instances of the Ligand of Interest. In addition, ligands with molecular weight > 250 and outliers as shown on the validation Tables will also be included. For torsion angles, if less than 5% of the Mogul distribution of torsion angles is within 10 degrees of the torsion angle in question, then that torsion angle is considered an outlier. Any bond that is central to one or more torsion angles identified as an outlier by Mogul will be

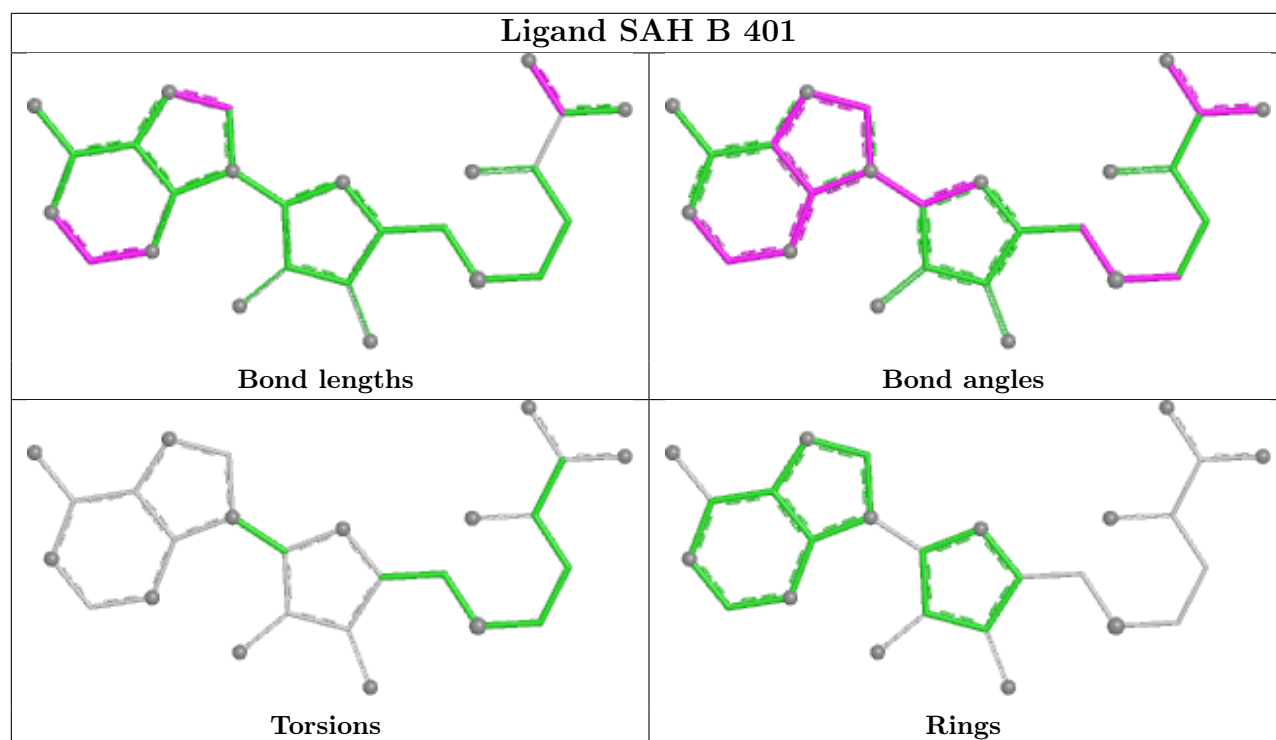
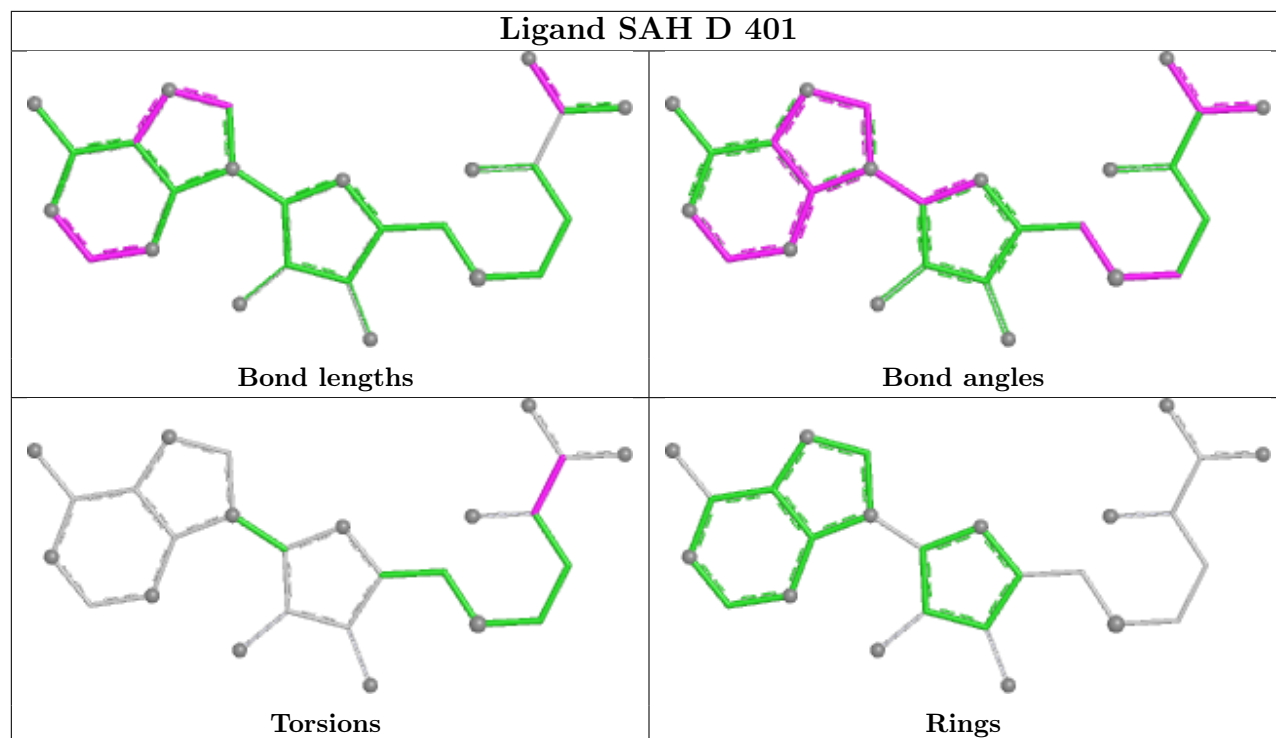
highlighted in the graph. For rings, the root-mean-square deviation (RMSD) between the ring in question and similar rings identified by Mogul is calculated over all ring torsion angles. If the average RMSD is greater than 60 degrees and the minimal RMSD between the ring in question and any Mogul-identified rings is also greater than 60 degrees, then that ring is considered an outlier. The outliers are highlighted in purple. The color gray indicates Mogul did not find sufficient equivalents in the CSD to analyse the geometry.

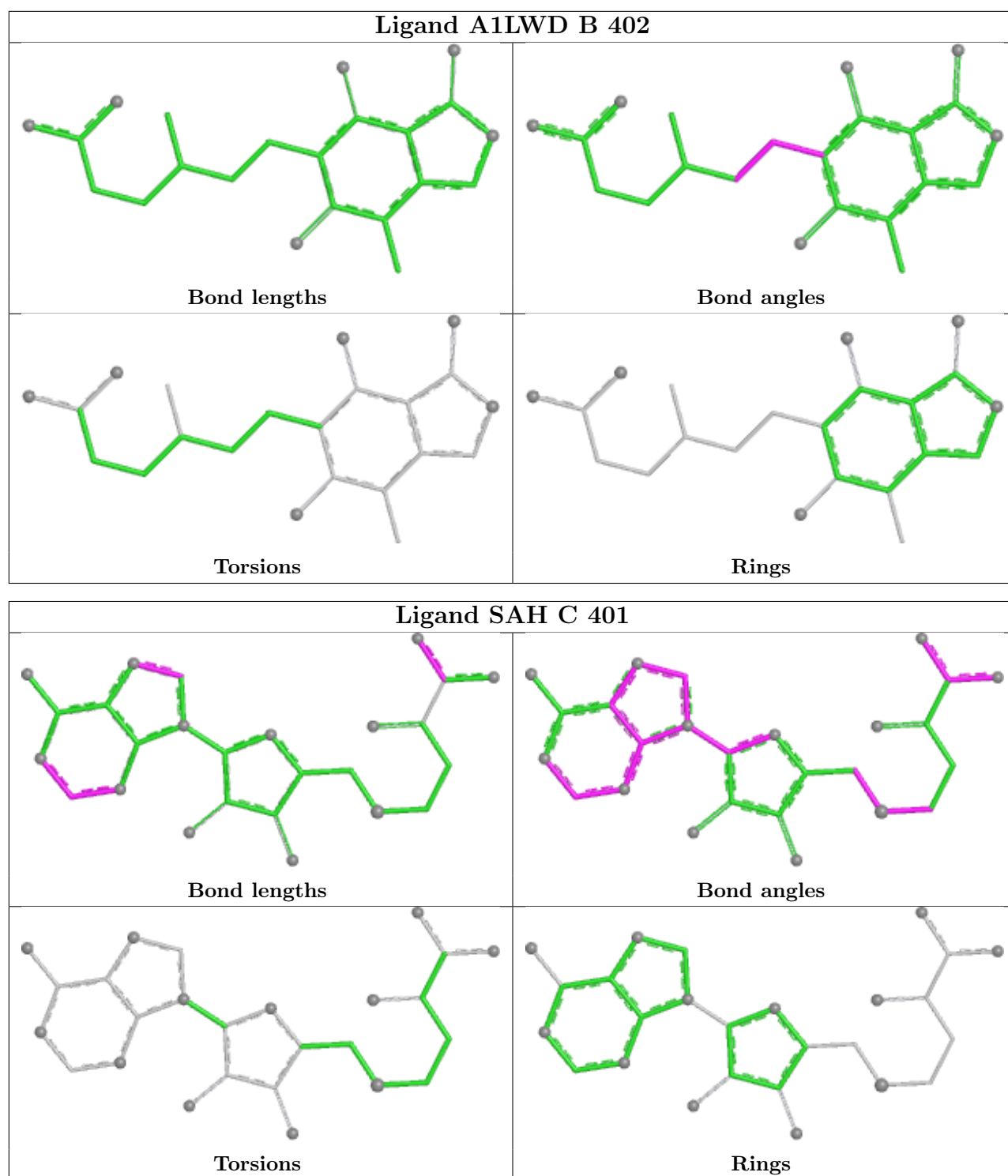












5.7 Other polymers [\(i\)](#)

There are no such residues in this entry.

5.8 Polymer linkage issues

There are no chain breaks in this entry.

6 Fit of model and data [i](#)

6.1 Protein, DNA and RNA chains [i](#)

In the following table, the column labelled ‘#RSRZ> 2’ contains the number (and percentage) of RSRZ outliers, followed by percent RSRZ outliers for the chain as percentile scores relative to all X-ray entries and entries of similar resolution. The OWAB column contains the minimum, median, 95th percentile and maximum values of the occupancy-weighted average B-factor per residue. The column labelled ‘Q< 0.9’ lists the number of (and percentage) of residues with an average occupancy less than 0.9.

Mol	Chain	Analysed	<RSRZ>	#RSRZ>2		OWAB(Å ²)	Q<0.9	
1	A	394/400 (98%)	-1.04	0	100	100	16, 22, 45, 72	0
1	B	395/400 (98%)	-1.08	0	100	100	12, 21, 43, 73	1 (0%)
1	C	393/400 (98%)	-1.09	0	100	100	16, 22, 41, 75	0
1	D	395/400 (98%)	-1.06	0	100	100	17, 22, 44, 75	0
1	E	391/400 (97%)	-0.41	1 (0%)	90	89	32, 40, 65, 94	0
1	F	389/400 (97%)	-0.35	3 (0%)	82	82	32, 43, 71, 91	0
All	All	2357/2400 (98%)	-0.84	4 (0%)	91	90	12, 25, 56, 94	1 (0%)

All (4) RSRZ outliers are listed below:

Mol	Chain	Res	Type	RSRZ
1	E	373	THR	2.5
1	F	372	LEU	2.4
1	F	108	ALA	2.2
1	F	93	GLY	2.1

6.2 Non-standard residues in protein, DNA, RNA chains [i](#)

There are no non-standard protein/DNA/RNA residues in this entry.

6.3 Carbohydrates [i](#)

There are no oligosaccharides in this entry.

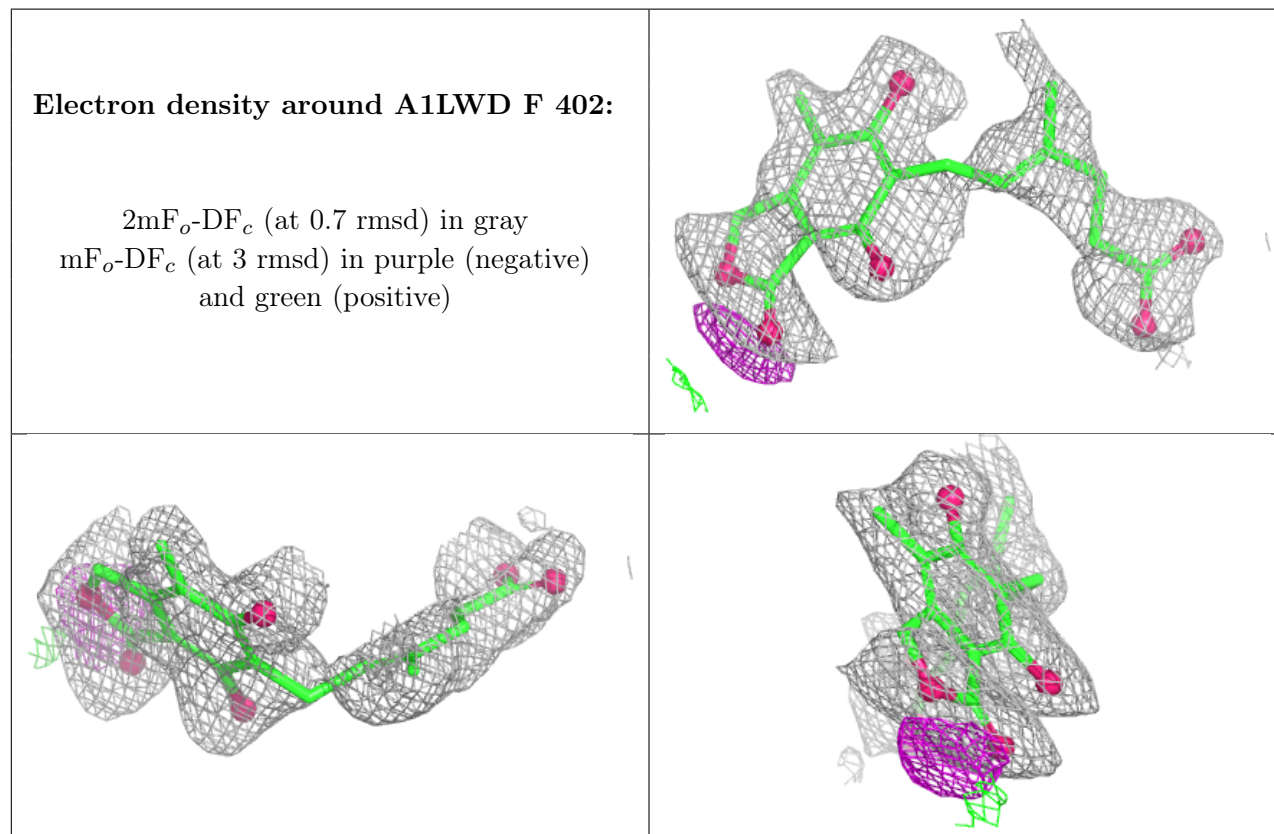
6.4 Ligands [i](#)

In the following table, the Atoms column lists the number of modelled atoms in the group and the number defined in the chemical component dictionary. The B-factors column lists the minimum,

median, 95th percentile and maximum values of B factors of atoms in the group. The column labelled 'Q< 0.9' lists the number of atoms with occupancy less than 0.9.

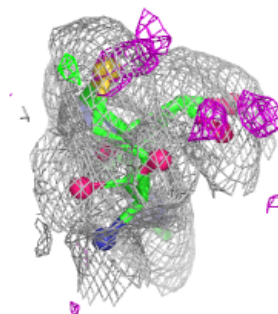
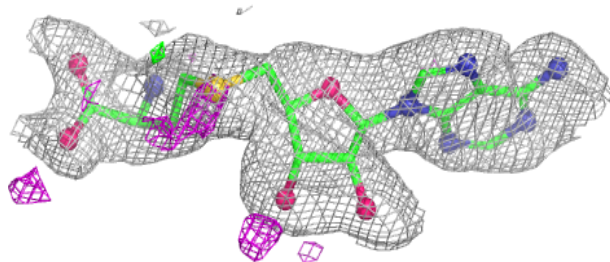
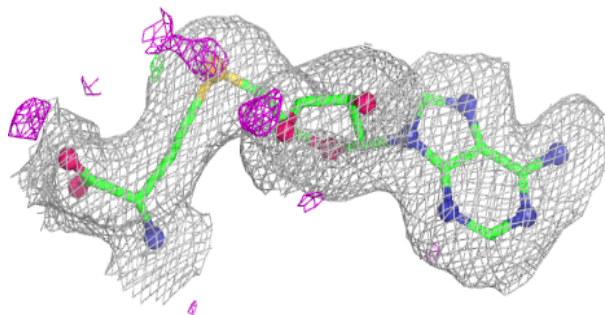
Mol	Type	Chain	Res	Atoms	RSCC	RSR	B-factors(Å ²)	Q<0.9
3	A1LWD	F	402	22/22	0.97	0.07	39,42,47,48	0
2	SAH	B	401	26/26	0.99	0.03	15,18,20,20	0
2	SAH	C	401	26/26	0.99	0.04	13,18,22,22	0
2	SAH	D	401	26/26	0.99	0.03	16,19,21,25	0
2	SAH	E	401	26/26	0.99	0.05	29,33,37,38	0
2	SAH	F	401	26/26	0.99	0.05	31,41,46,47	0
3	A1LWD	A	402	22/22	0.99	0.04	18,21,26,32	0
3	A1LWD	B	402	22/22	0.99	0.04	13,18,21,24	0
3	A1LWD	C	402	22/22	0.99	0.04	14,17,19,20	0
3	A1LWD	D	402	22/22	0.99	0.04	17,19,25,31	0
3	A1LWD	E	402	22/22	0.99	0.05	32,36,41,46	0
2	SAH	A	401	26/26	0.99	0.03	14,19,21,23	0

The following is a graphical depiction of the model fit to experimental electron density of all instances of the Ligand of Interest. In addition, ligands with molecular weight > 250 and outliers as shown on the geometry validation Tables will also be included. Each fit is shown from different orientation to approximate a three-dimensional view.

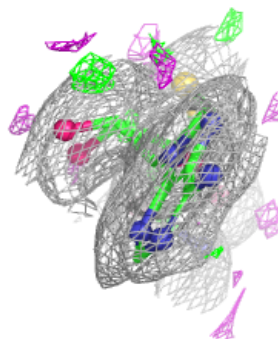
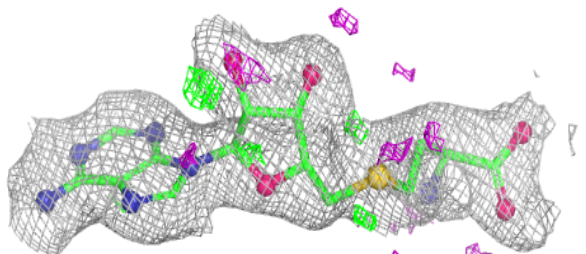
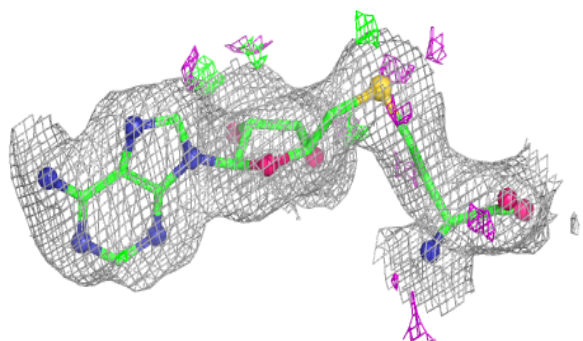


Electron density around SAH B 401:

$2mF_o-DF_c$ (at 0.7 rmsd) in gray
 mF_o-DF_c (at 3 rmsd) in purple (negative)
and green (positive)

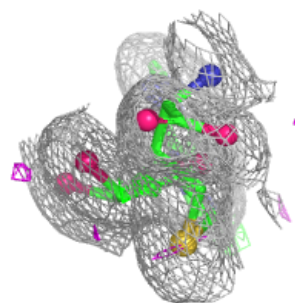
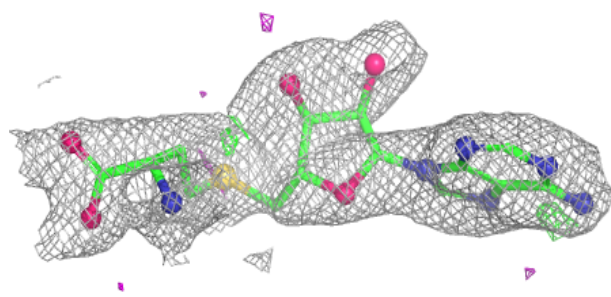
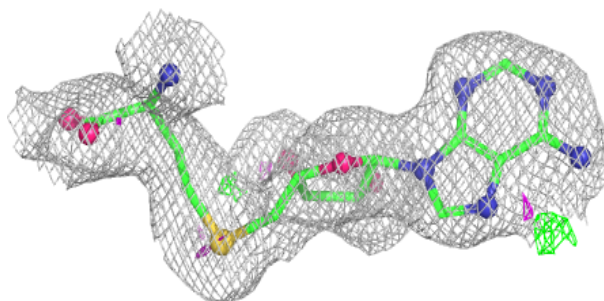
**Electron density around SAH C 401:**

$2mF_o-DF_c$ (at 0.7 rmsd) in gray
 mF_o-DF_c (at 3 rmsd) in purple (negative)
and green (positive)

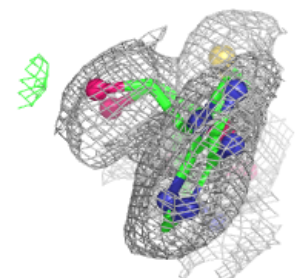
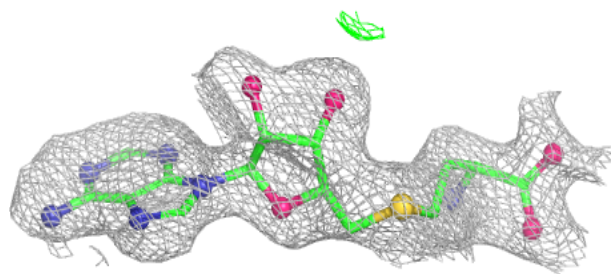
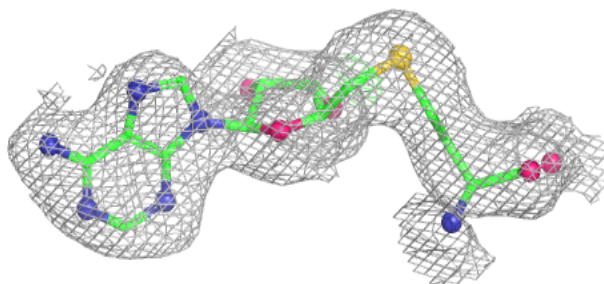


Electron density around SAH D 401:

$2mF_o-DF_c$ (at 0.7 rmsd) in gray
 mF_o-DF_c (at 3 rmsd) in purple (negative)
and green (positive)

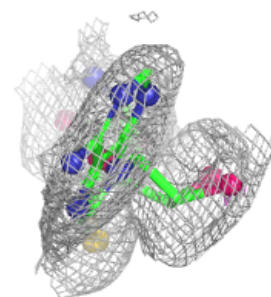
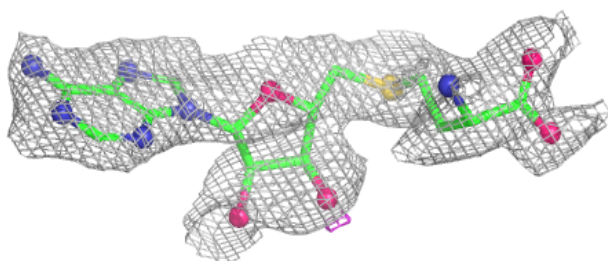
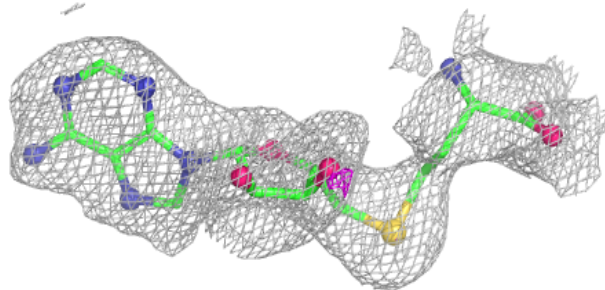
**Electron density around SAH E 401:**

$2mF_o-DF_c$ (at 0.7 rmsd) in gray
 mF_o-DF_c (at 3 rmsd) in purple (negative)
and green (positive)

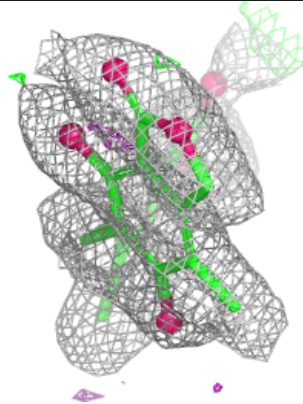
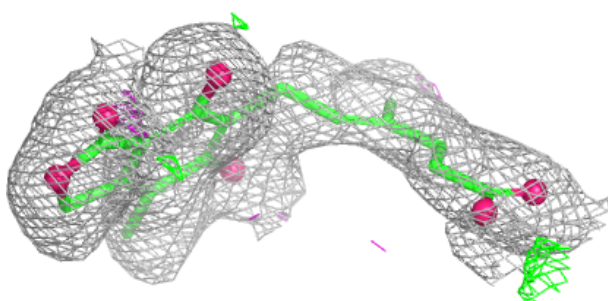
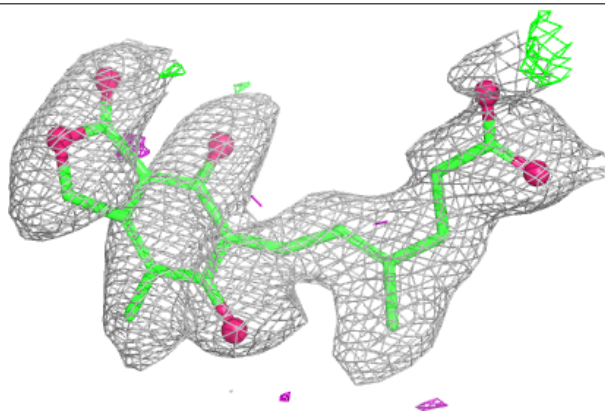


Electron density around SAH F 401:

$2mF_o-DF_c$ (at 0.7 rmsd) in gray
 mF_o-DF_c (at 3 rmsd) in purple (negative)
and green (positive)

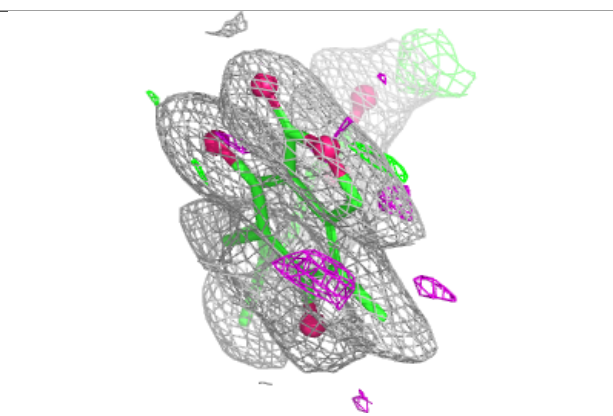
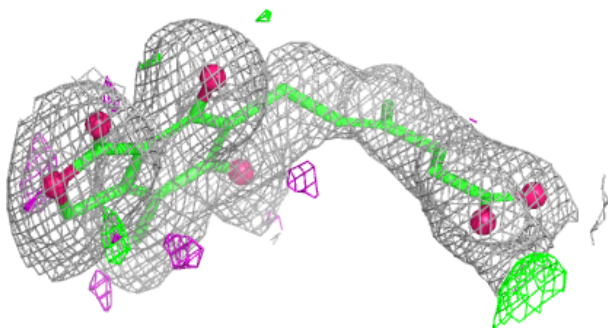
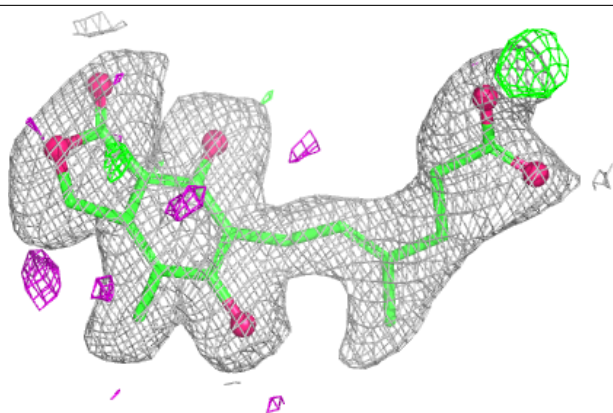
**Electron density around A1LWD A 402:**

$2mF_o-DF_c$ (at 0.7 rmsd) in gray
 mF_o-DF_c (at 3 rmsd) in purple (negative)
and green (positive)

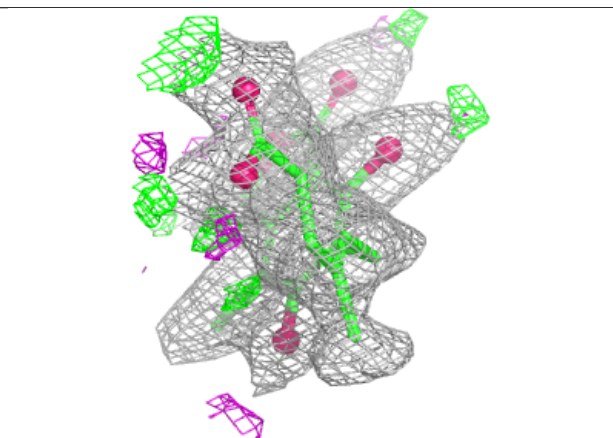
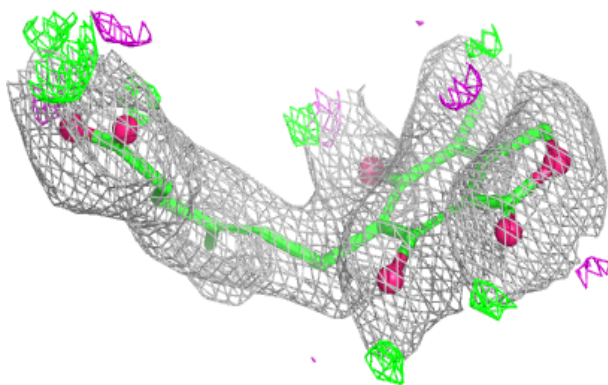
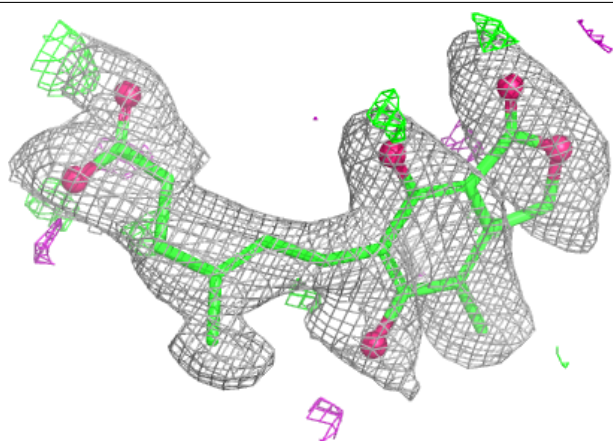


Electron density around A1LWD B 402:

$2mF_o-DF_c$ (at 0.7 rmsd) in gray
 mF_o-DF_c (at 3 rmsd) in purple (negative)
and green (positive)

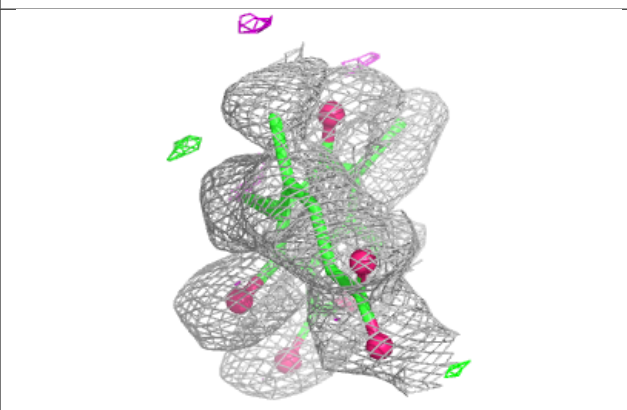
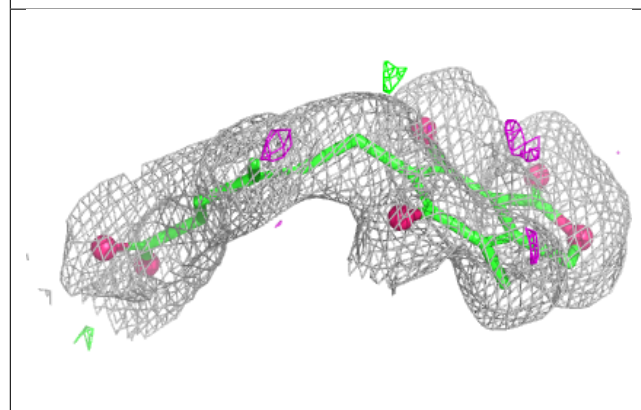
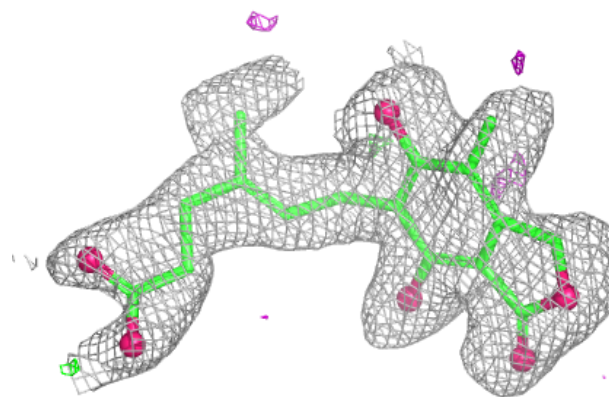
**Electron density around A1LWD C 402:**

$2mF_o-DF_c$ (at 0.7 rmsd) in gray
 mF_o-DF_c (at 3 rmsd) in purple (negative)
and green (positive)

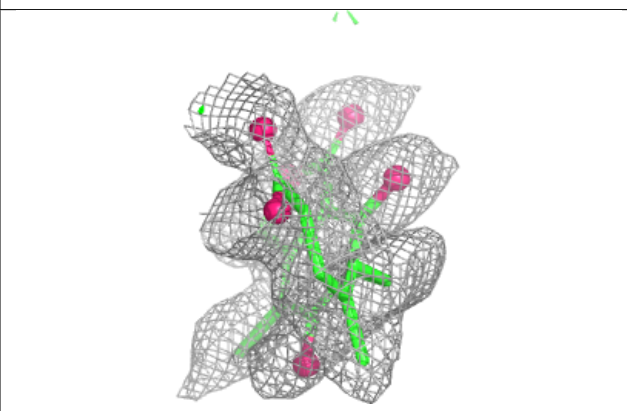
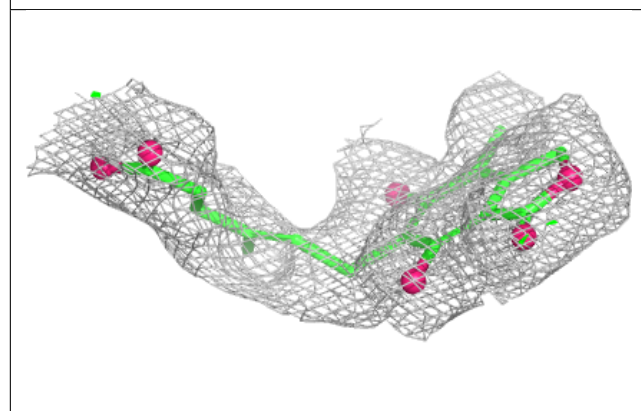
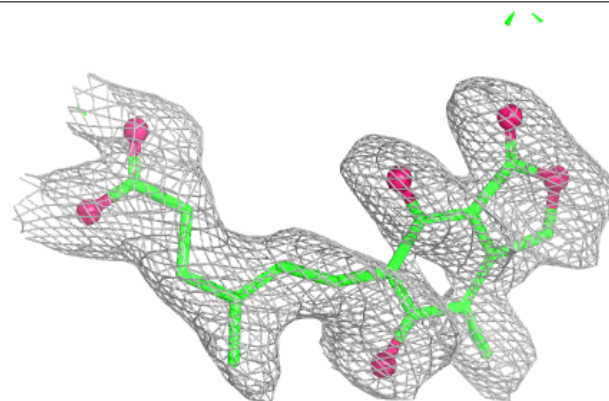


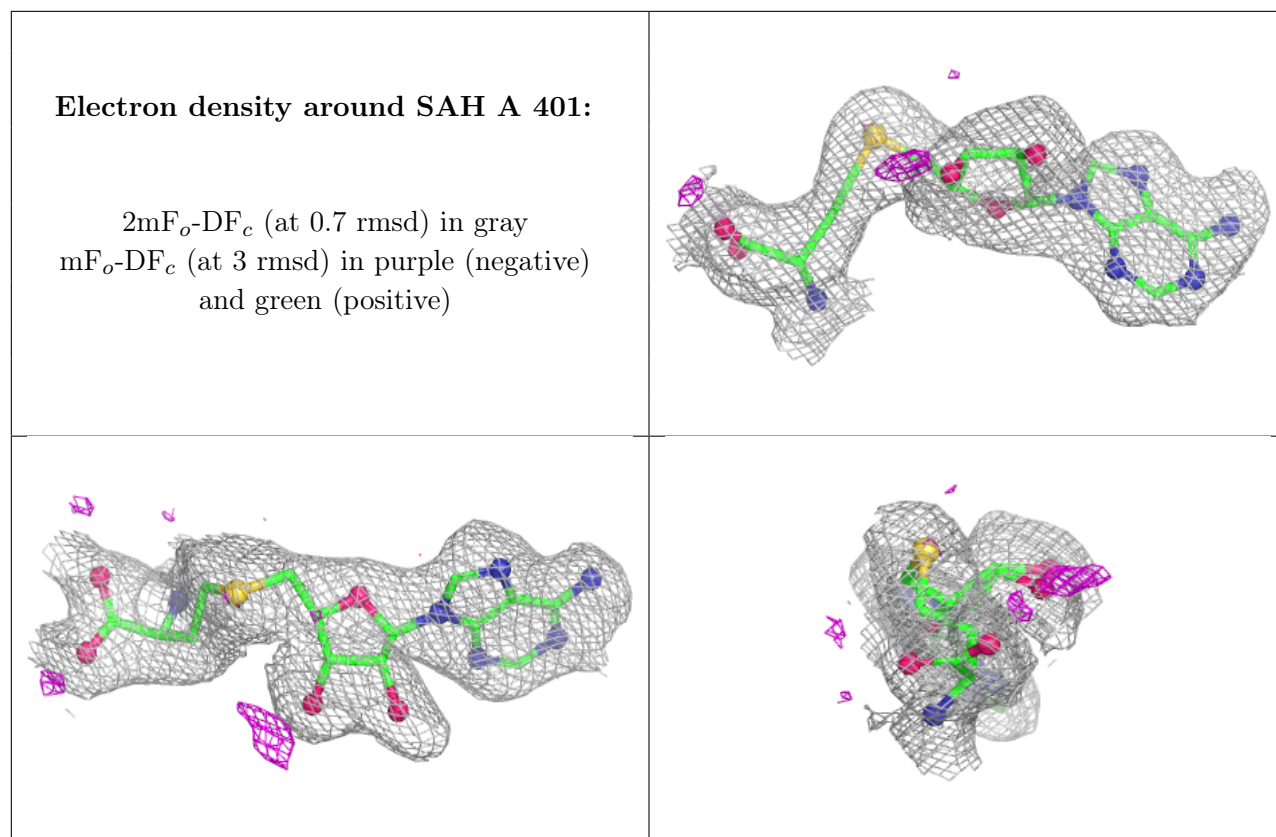
Electron density around A1LWD D 402:

$2mF_o-DF_c$ (at 0.7 rmsd) in gray
 mF_o-DF_c (at 3 rmsd) in purple (negative)
and green (positive)

**Electron density around A1LWD E 402:**

$2mF_o-DF_c$ (at 0.7 rmsd) in gray
 mF_o-DF_c (at 3 rmsd) in purple (negative)
and green (positive)





6.5 Other polymers [i](#)

There are no such residues in this entry.