



Full wwPDB X-ray Structure Validation Report

Mar 8, 2026 – 12:53 PM UTC

PDB ID : 2YNE / pdb_00002yne
Title : Plasmodium vivax N-myristoyltransferase in complex with a benzothiophene inhibitor
Authors : Wright, M.H.; Clough, B.; Rackham, M.D.; Brannigan, J.A.; Grainger, M.; Bottrill, A.R.; Heal, W.P.; Broncel, M.; Serwa, R.A.; Mann, D.; Leatherbarrow, R.J.; Wilkinson, A.J.; Holder, A.A.; Tate, E.W.
Deposited on : 2012-10-13
Resolution : 1.72 Å(reported)

This is a Full wwPDB X-ray Structure Validation Report for a publicly released PDB entry.

We welcome your comments at validation@mail.wwpdb.org

A user guide is available at

<https://www.wwpdb.org/validation/2017/XrayValidationReportHelp>

with specific help available everywhere you see the  symbol.

The types of validation reports are described at

<http://www.wwpdb.org/validation/2017/FAQs#types>.

The following versions of software and data (see [references](#) ①) were used in the production of this report:

MolProbity : 4-5-2 with Phenix2.0
Mogul : 2022.3.0, CSD as543be (2022)
Xtrriage (Phenix) : 2.0
EDS : 3.0
Buster-report : wwPDB partial adaption of 1.1.7 (2018)
Percentile statistics : 20250101.v01 (using entries in the PDB archive January 1st 2025)
CCP4 : 9.0.010 (Gargrove)
Density-Fitness : 1.0.12
Ideal geometry (proteins) : Engh & Huber (2001)
Ideal geometry (DNA, RNA) : Parkinson et al. (1996)
Validation Pipeline (wwPDB-VP) : 2.49

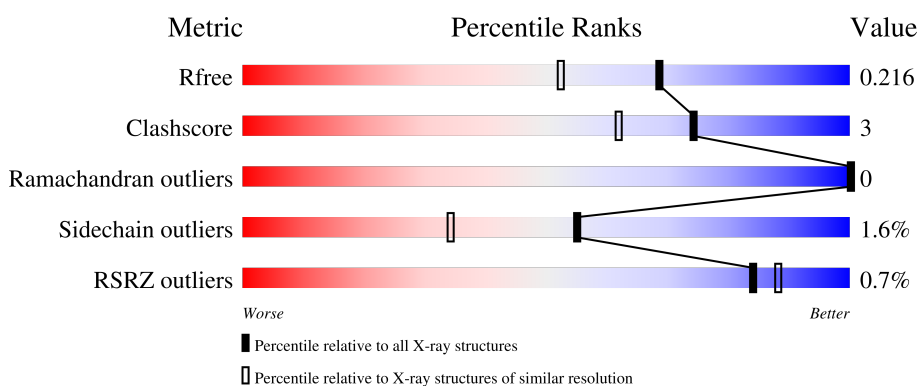
1 Overall quality at a glance

The following experimental techniques were used to determine the structure:

X-RAY DIFFRACTION

The reported resolution of this entry is 1.72 Å.

Percentile scores (ranging between 0-100) for global validation metrics of the entry are shown in the following graphic. The table shows the number of entries on which the scores are based.



Metric	Whole archive (#Entries)	Similar resolution (#Entries, resolution range(Å))
R_{free}	180053	1039 (1.72-1.72)
Clashscore	190562	1049 (1.72-1.72)
Ramachandran outliers	187476	1041 (1.72-1.72)
Sidechain outliers	187428	1041 (1.72-1.72)
RSRZ outliers	180081	1039 (1.72-1.72)

The table below summarises the geometric issues observed across the polymeric chains and their fit to the electron density. The red, orange, yellow and green segments of the lower bar indicate the fraction of residues that contain outliers for ≥ 3 , 2, 1 and 0 types of geometric quality criteria respectively. A grey segment represents the fraction of residues that are not modelled. The numeric value for each fraction is indicated below the corresponding segment, with a dot representing fractions $\leq 5\%$. The upper red bar (where present) indicates the fraction of residues that have poor fit to the electron density. The numeric value is given above the bar.

Mol	Chain	Length	Quality of chain
1	A	384	 88% 11% .
1	B	384	 86% 13% .
1	C	384	 84% 11% . .

2 Entry composition [i](#)

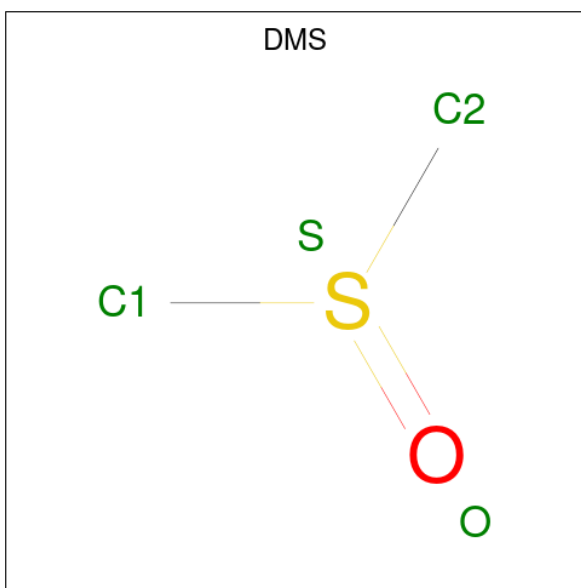
There are 8 unique types of molecules in this entry. The entry contains 11389 atoms, of which 0 are hydrogens and 0 are deuteriums.

In the tables below, the ZeroOcc column contains the number of atoms modelled with zero occupancy, the AltConf column contains the number of residues with at least one atom in alternate conformation and the Trace column contains the number of residues modelled with at most 2 atoms.

- Molecule 1 is a protein called GLYCYLPEPTIDE N-TETRADECANOYLTRANSFERASE.

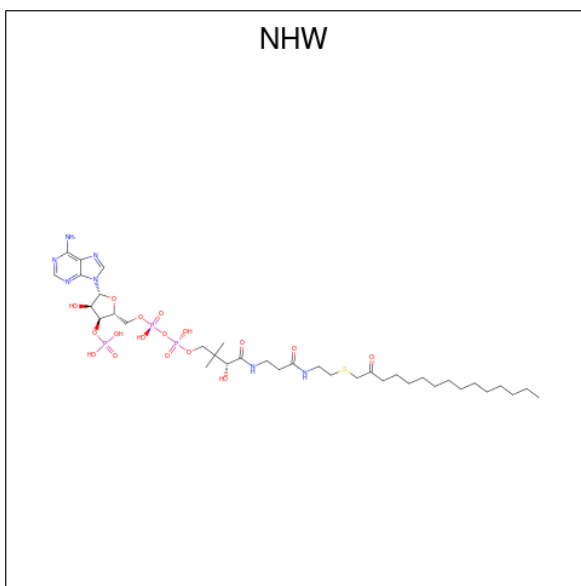
Mol	Chain	Residues	Atoms					ZeroOcc	AltConf	Trace
			Total	C	N	O	S			
1	A	384	Total 3301	C 2144	N 534	O 611	S 12	0	22	0
1	B	384	Total 3276	C 2133	N 532	O 599	S 12	0	18	0
1	C	367	Total 3131	C 2041	N 500	O 580	S 10	0	16	0

- Molecule 2 is DIMETHYL SULFOXIDE (CCD ID: DMS) (formula: C₂H₆OS).



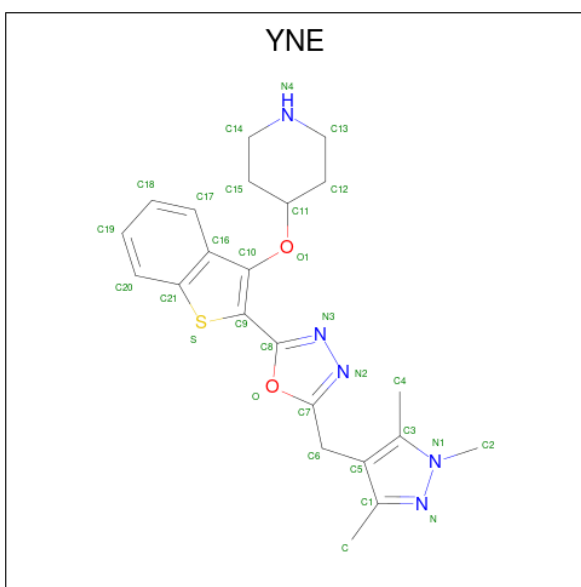
Mol	Chain	Residues	Atoms				ZeroOcc	AltConf
			Total	C	O	S		
2	A	1	Total 4	C 2	O 1	S 1	0	0
2	B	1	Total 4	C 2	O 1	S 1	0	0
2	C	1	Total 4	C 2	O 1	S 1	0	0

- Molecule 3 is 2-oxopentadecyl-CoA (CCD ID: NHW) (formula: $C_{36}H_{64}N_7O_{17}P_3S$).



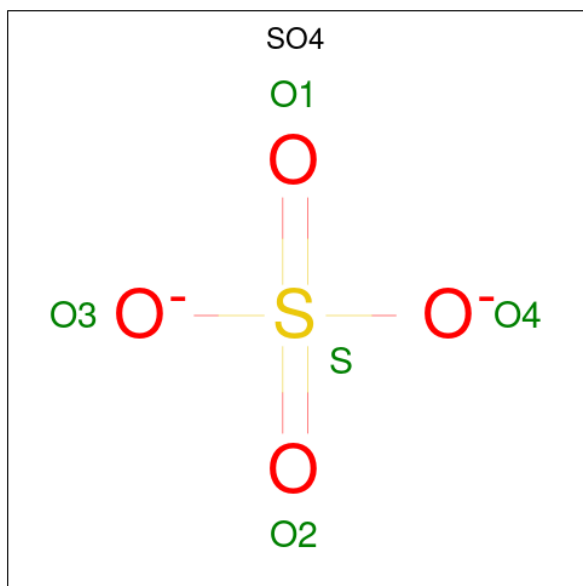
Mol	Chain	Residues	Atoms					ZeroOcc	AltConf		
			Total	C	N	O	P			S	
3	A	1	Total	64	36	7	17	3	1	0	0
3	B	1	Total	64	36	7	17	3	1	0	0
3	C	1	Total	64	36	7	17	3	1	0	0

- Molecule 4 is 2-(3-piperidin-4-yloxy-1-benzothiophen-2-yl)-5-[(1,3,5-trimethylpyrazol-4-yl)methyl]-1,3,4-oxadiazole (CCD ID: YNE) (formula: $C_{22}H_{25}N_5O_2S$).



Mol	Chain	Residues	Atoms					ZeroOcc	AltConf
4	A	1	Total	C	N	O	S	0	0
			30	22	5	2	1		
4	B	1	Total	C	N	O	S	0	0
			30	22	5	2	1		
4	C	1	Total	C	N	O	S	0	0
			30	22	5	2	1		

- Molecule 5 is SULFATE ION (CCD ID: SO4) (formula: O₄S).



Mol	Chain	Residues	Atoms			ZeroOcc	AltConf
5	A	1	Total	O	S	0	0
			5	4	1		

- Molecule 6 is MAGNESIUM ION (CCD ID: MG) (formula: Mg).

Mol	Chain	Residues	Atoms		ZeroOcc	AltConf
6	A	1	Total	Mg	0	0
			1	1		
6	B	1	Total	Mg	0	0
			1	1		
6	C	1	Total	Mg	0	0
			1	1		

- Molecule 7 is CHLORIDE ION (CCD ID: CL) (formula: Cl).

Mol	Chain	Residues	Atoms	ZeroOcc	AltConf
7	A	2	Total Cl 2 2	0	0
7	B	1	Total Cl 1 1	0	0
7	C	1	Total Cl 1 1	0	0

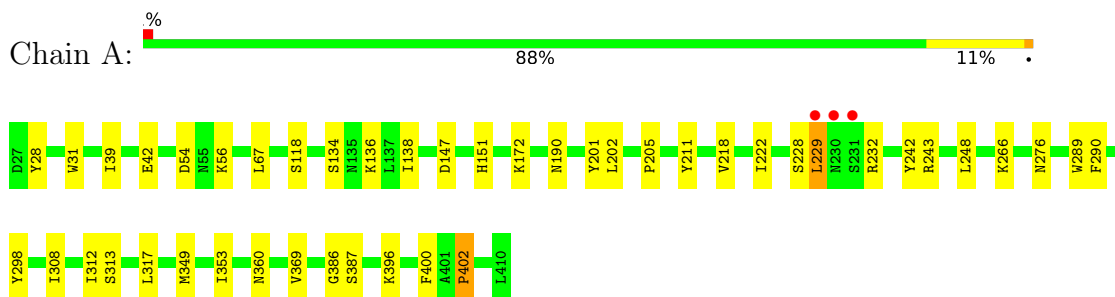
- Molecule 8 is water.

Mol	Chain	Residues	Atoms	ZeroOcc	AltConf
8	A	507	Total O 507 507	0	0
8	B	470	Total O 470 470	0	0
8	C	398	Total O 398 398	0	0

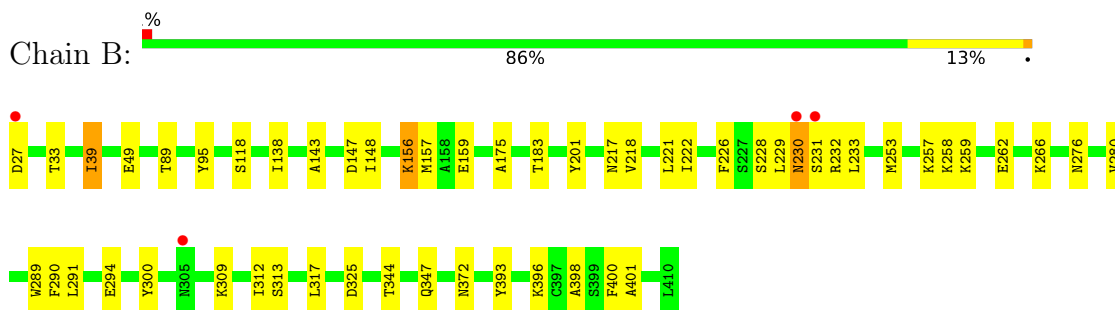
3 Residue-property plots [i](#)

These plots are drawn for all protein, RNA, DNA and oligosaccharide chains in the entry. The first graphic for a chain summarises the proportions of the various outlier classes displayed in the second graphic. The second graphic shows the sequence view annotated by issues in geometry and electron density. Residues are color-coded according to the number of geometric quality criteria for which they contain at least one outlier: green = 0, yellow = 1, orange = 2 and red = 3 or more. A red dot above a residue indicates a poor fit to the electron density ($RSRZ > 2$). Stretches of 2 or more consecutive residues without any outlier are shown as a green connector. Residues present in the sample, but not in the model, are shown in grey.

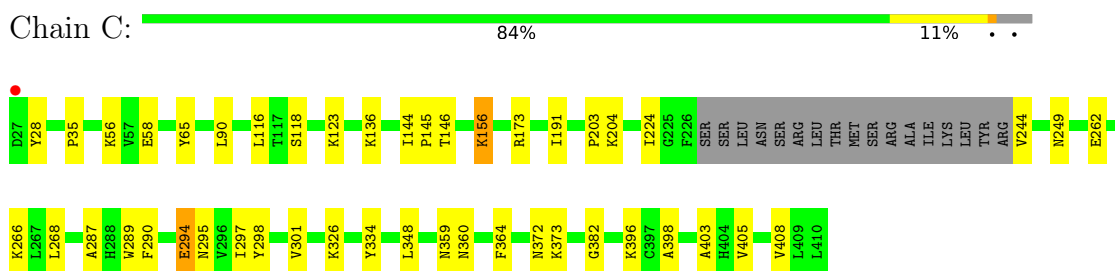
- Molecule 1: GLYCYLPEPTIDE N-TETRADECANOYLTRANSFERASE



- Molecule 1: GLYCYLPEPTIDE N-TETRADECANOYLTRANSFERASE



- Molecule 1: GLYCYLPEPTIDE N-TETRADECANOYLTRANSFERASE



4 Data and refinement statistics

Property	Value	Source
Space group	P 21 21 21	Depositor
Cell constants a, b, c, α , β , γ	57.62Å 121.85Å 179.16Å 90.00° 90.00° 90.00°	Depositor
Resolution (Å)	44.83 – 1.72 44.83 – 1.72	Depositor EDS
% Data completeness (in resolution range)	99.4 (44.83-1.72) 99.5 (44.83-1.72)	Depositor EDS
R_{merge}	0.16	Depositor
R_{sym}	(Not available)	Depositor
$\langle I/\sigma(I) \rangle$ ¹	2.25 (at 1.72Å)	Xtrriage
Refinement program	REFMAC 5.7.0029	Depositor
R, R_{free}	0.173 , 0.218 0.172 , 0.216	Depositor DCC
R_{free} test set	6725 reflections (5.02%)	wwPDB-VP
Wilson B-factor (Å ²)	17.3	Xtrriage
Anisotropy	0.290	Xtrriage
Bulk solvent k_{sol} (e/Å ³), B_{sol} (Å ²)	0.33 , 35.2	EDS
L-test for twinning ²	$\langle L \rangle = 0.46$, $\langle L^2 \rangle = 0.29$	Xtrriage
Estimated twinning fraction	No twinning to report.	Xtrriage
F_o, F_c correlation	0.96	EDS
Total number of atoms	11389	wwPDB-VP
Average B, all atoms (Å ²)	17.0	wwPDB-VP

Xtrriage's analysis on translational NCS is as follows: *The largest off-origin peak in the Patterson function is 4.31% of the height of the origin peak. No significant pseudotranslation is detected.*

¹Intensities estimated from amplitudes.

²Theoretical values of $\langle |L| \rangle$, $\langle L^2 \rangle$ for acentric reflections are 0.5, 0.333 respectively for untwinned datasets, and 0.375, 0.2 for perfectly twinned datasets.

5 Model quality i

5.1 Standard geometry i

Bond lengths and bond angles in the following residue types are not validated in this section: YNE, CL, NHW, MG, SO4, DMS

The Z score for a bond length (or angle) is the number of standard deviations the observed value is removed from the expected value. A bond length (or angle) with $|Z| > 5$ is considered an outlier worth inspection. RMSZ is the root-mean-square of all Z scores of the bond lengths (or angles).

Mol	Chain	Bond lengths		Bond angles	
		RMSZ	# Z >5	RMSZ	# Z >5
1	A	1.49	16/3432 (0.5%)	1.23	7/4648 (0.2%)
1	B	1.45	15/3404 (0.4%)	1.24	10/4604 (0.2%)
1	C	1.43	19/3252 (0.6%)	1.20	5/4404 (0.1%)
All	All	1.46	50/10088 (0.5%)	1.23	22/13656 (0.2%)

All (50) bond length outliers are listed below:

Mol	Chain	Res	Type	Atoms	Z	Observed(Å)	Ideal(Å)
1	C	145	PRO	C-O	7.16	1.30	1.23
1	C	35	PRO	CA-C	7.12	1.59	1.52
1	B	398	ALA	C-O	7.03	1.32	1.23
1	A	147	ASP	C-O	7.01	1.32	1.24
1	C	301	VAL	C-O	6.96	1.31	1.23
1	C	398	ALA	C-O	6.94	1.32	1.23
1	C	408	VAL	C-O	6.90	1.31	1.24
1	B	175	ALA	N-CA	6.47	1.53	1.46
1	C	405	VAL	CA-C	6.17	1.59	1.52
1	A	202	LEU	N-CA	5.99	1.50	1.46
1	B	218	VAL	CA-CB	5.89	1.60	1.54
1	B	401	ALA	N-CA	5.84	1.53	1.45
1	A	386	GLY	N-CA	5.73	1.52	1.45
1	A	134	SER	N-CA	5.72	1.53	1.46
1	B	393	TYR	C-O	5.61	1.30	1.24
1	A	205	PRO	C-O	5.57	1.30	1.23
1	B	259	LYS	N-CA	5.53	1.53	1.46
1	C	297	ILE	CA-C	5.51	1.59	1.52
1	A	313	SER	N-CA	5.50	1.52	1.45
1	A	308	ILE	N-CA	5.49	1.52	1.46
1	B	95	TYR	C-O	5.47	1.29	1.23
1	C	144	ILE	CA-CB	5.45	1.61	1.55
1	C	173	ARG	CA-CB	5.43	1.61	1.53

Continued on next page...

Continued from previous page...

Mol	Chain	Res	Type	Atoms	Z	Observed(Å)	Ideal(Å)
1	B	280	VAL	CA-CB	5.42	1.59	1.53
1	B	226	PHE	C-O	-5.33	1.17	1.24
1	A	353	ILE	N-CA	5.30	1.52	1.46
1	A	312	ILE	C-O	5.29	1.29	1.24
1	A	190	ASN	CA-CB	5.29	1.61	1.53
1	C	334	TYR	CA-C	-5.26	1.46	1.52
1	C	287	ALA	C-O	5.25	1.30	1.24
1	B	183	THR	CA-C	5.24	1.59	1.52
1	B	33	THR	N-CA	5.23	1.52	1.46
1	C	268	LEU	CA-C	-5.14	1.46	1.52
1	C	65	TYR	C-O	5.14	1.30	1.23
1	B	313	SER	C-O	5.13	1.29	1.23
1	C	364	PHE	CA-CB	5.12	1.61	1.53
1	C	298	TYR	C-O	5.12	1.29	1.24
1	A	387	SER	C-O	5.11	1.30	1.23
1	A	248	LEU	C-O	5.09	1.30	1.23
1	C	249	ASN	N-CA	5.09	1.52	1.46
1	C	116	LEU	C-O	-5.08	1.17	1.24
1	A	211	TYR	C-O	5.07	1.29	1.23
1	C	382	GLY	CA-C	-5.07	1.48	1.52
1	B	257	LYS	CE-NZ	5.07	1.64	1.49
1	B	317	LEU	N-CA	5.05	1.51	1.46
1	C	90	LEU	N-CA	5.05	1.52	1.46
1	B	89	THR	C-O	5.05	1.29	1.24
1	A	229	LEU	C-O	-5.04	1.18	1.23
1	A	349	MET	N-CA	5.03	1.52	1.46
1	A	298	TYR	N-CA	5.02	1.52	1.46

All (22) bond angle outliers are listed below:

Mol	Chain	Res	Type	Atoms	Z	Observed(°)	Ideal(°)
1	B	257	LYS	CD-CE-NZ	8.78	140.00	111.90
1	B	49	GLU	CA-C-N	-8.58	111.53	120.03
1	B	49	GLU	C-N-CA	-8.58	111.53	120.03
1	A	317	LEU	CA-C-N	-7.95	112.52	120.31
1	A	317	LEU	C-N-CA	-7.95	112.52	120.31
1	B	49	GLU	N-CA-C	6.50	113.85	108.07
1	B	226	PHE	N-CA-C	-6.40	103.59	111.40
1	A	396	LYS	N-CA-CB	-6.16	100.90	110.57
1	C	290	PHE	CA-C-N	-5.79	112.77	120.65
1	C	290	PHE	C-N-CA	-5.79	112.77	120.65
1	B	396	LYS	N-CA-CB	-5.75	101.53	110.57

Continued on next page...

Continued from previous page...

Mol	Chain	Res	Type	Atoms	Z	Observed(°)	Ideal(°)
1	A	67	LEU	CA-C-N	-5.66	114.55	120.38
1	A	67	LEU	C-N-CA	-5.66	114.55	120.38
1	A	290	PHE	N-CA-C	5.66	120.84	113.88
1	A	402	PRO	N-CA-C	5.41	120.87	113.84
1	B	309	LYS	CA-CB-CG	-5.41	103.29	114.10
1	B	372	ASN	N-CA-C	5.40	117.25	111.36
1	C	403	ALA	N-CA-C	-5.39	105.96	112.54
1	C	372	ASN	N-CA-C	5.29	117.05	111.28
1	C	348	LEU	N-CA-C	-5.29	105.43	111.14
1	B	290	PHE	CA-C-N	-5.11	113.82	120.67
1	B	290	PHE	C-N-CA	-5.11	113.82	120.67

There are no chirality outliers.

There are no planarity outliers.

5.2 Too-close contacts [i](#)

In the following table, the Non-H and H(model) columns list the number of non-hydrogen atoms and hydrogen atoms in the chain respectively. The H(added) column lists the number of hydrogen atoms added and optimized by MolProbity. The Clashes column lists the number of clashes within the asymmetric unit, whereas Symm-Clashes lists symmetry-related clashes.

Mol	Chain	Non-H	H(model)	H(added)	Clashes	Symm-Clashes
1	A	3301	0	3306	15	0
1	B	3276	0	3306	29	0
1	C	3131	0	3118	16	1
2	A	4	0	6	0	0
2	B	4	0	6	0	0
2	C	4	0	6	0	0
3	A	64	0	60	0	0
3	B	64	0	60	0	0
3	C	64	0	60	0	0
4	A	30	0	25	1	0
4	B	30	0	25	1	0
4	C	30	0	25	1	0
5	A	5	0	0	0	0
6	A	1	0	0	0	0
6	B	1	0	0	0	0
6	C	1	0	0	0	0
7	A	2	0	0	0	0
7	B	1	0	0	0	0

Continued on next page...

Continued from previous page...

Mol	Chain	Non-H	H(model)	H(added)	Clashes	Symm-Clashes
7	C	1	0	0	0	0
8	A	507	0	0	3	1
8	B	470	0	0	5	0
8	C	398	0	0	5	0
All	All	11389	0	10003	62	1

The all-atom clashscore is defined as the number of clashes found per 1000 atoms (including hydrogen atoms). The all-atom clashscore for this structure is 3.

All (62) close contacts within the same asymmetric unit are listed below, sorted by their clash magnitude.

Atom-1	Atom-2	Interatomic distance (Å)	Clash overlap (Å)
1:B:156[A]:LYS:HE3	8:B:2216:HOH:O	1.65	0.95
1:B:262:GLU:HG2	1:B:266[B]:LYS:HE3	1.60	0.82
1:B:156[A]:LYS:HE2	1:B:156[A]:LYS:HA	1.66	0.77
1:B:39:ILE:HD11	1:B:201:TYR:HE2	1.49	0.76
1:B:147[B]:ASP:OD1	1:B:156[B]:LYS:HG3	1.84	0.76
1:C:58[B]:GLU:H	1:C:58[B]:GLU:CD	1.95	0.72
1:B:156[A]:LYS:HD3	8:B:2234:HOH:O	1.93	0.68
1:A:42[B]:GLU:HG3	1:B:344:THR:HG21	1.75	0.67
1:A:222[A]:ILE:HD12	1:A:229:LEU:HG	1.78	0.65
1:B:39:ILE:HD11	1:B:201:TYR:CE2	2.35	0.59
1:C:136:LYS:HE3	8:C:2168:HOH:O	2.03	0.58
1:C:56:LYS:HB3	1:C:58[B]:GLU:OE1	2.04	0.57
1:A:54[B]:ASP:OD1	1:A:56:LYS:NZ	2.39	0.56
1:B:230[A]:ASN:ND2	1:B:232:ARG:HB2	2.20	0.55
1:B:262:GLU:CG	1:B:266[B]:LYS:HE3	2.35	0.54
1:C:262[B]:GLU:H	1:C:262[B]:GLU:CD	2.16	0.53
1:A:138:ILE:C	1:A:138:ILE:HD12	2.33	0.52
1:B:258[B]:LYS:HD3	1:B:291:LEU:HD11	1.92	0.52
1:B:266[B]:LYS:HG3	8:B:2348:HOH:O	2.08	0.52
1:C:326[A]:LYS:HE3	8:C:2329:HOH:O	2.10	0.51
4:A:1001:YNE:C17	4:A:1001:YNE:H11	2.42	0.50
1:C:146[A]:THR:CG2	8:C:2174:HOH:O	2.59	0.50
1:B:222:ILE:HD12	1:B:229:LEU:HG	1.94	0.49
1:A:266:LYS:NZ	1:A:266:LYS:HB3	2.27	0.49
1:C:146[A]:THR:HG22	8:C:2174:HOH:O	2.13	0.49
1:A:151[A]:HIS:HA	1:A:276[A]:ASN:OD1	2.12	0.49
1:B:230[B]:ASN:HB2	1:B:233:LEU:H	1.77	0.48
1:C:118:SER:HB3	1:C:289:TRP:CZ2	2.48	0.48
1:B:258[B]:LYS:HD2	8:B:2343:HOH:O	2.13	0.48

Continued on next page...

Continued from previous page...

Atom-1	Atom-2	Interatomic distance (Å)	Clash overlap (Å)
1:A:118:SER:HB3	1:A:289:TRP:CZ2	2.49	0.47
1:A:276[A]:ASN:ND2	1:A:400:PHE:CE2	2.81	0.47
1:B:253[B]:MET:HE2	1:B:312:ILE:HD12	1.96	0.47
1:C:123:LYS:HG3	8:C:2155:HOH:O	2.13	0.47
1:A:360[A]:ASN:ND2	8:A:2310:HOH:O	2.48	0.47
1:B:156[A]:LYS:CD	8:B:2234:HOH:O	2.58	0.46
1:B:156[A]:LYS:HE2	1:B:156[A]:LYS:CA	2.35	0.46
1:B:276[A]:ASN:ND2	1:B:400:PHE:CE1	2.84	0.45
1:C:294[A]:GLU:HG3	1:C:295:ASN:N	2.32	0.44
1:C:156:LYS:HG3	1:C:191:ILE:HG12	2.00	0.44
1:A:218[A]:VAL:HG21	1:A:242:TYR:HB2	1.99	0.44
1:B:253[A]:MET:HG3	1:B:300:TYR:HB3	1.98	0.44
4:B:1001:YNE:C17	4:B:1001:YNE:H11	2.47	0.43
1:C:359:ASN:O	1:C:360[A]:ASN:HB3	2.19	0.42
1:A:243[B]:ARG:HG2	8:A:2338:HOH:O	2.18	0.42
4:C:1001:YNE:H11	4:C:1001:YNE:C17	2.49	0.42
1:B:118:SER:HB3	1:B:289:TRP:CZ2	2.53	0.42
1:A:172:LYS:HG2	8:A:2262:HOH:O	2.20	0.42
1:B:143:ALA:HA	1:B:159:GLU:O	2.20	0.42
1:C:56:LYS:HD2	1:C:58[B]:GLU:OE1	2.20	0.42
1:A:369:VAL:HA	1:A:402:PRO:O	2.20	0.41
1:B:344:THR:OG1	1:B:347:GLN:HG3	2.21	0.41
1:B:217:ASN:O	1:B:221:LEU:HG	2.20	0.41
1:C:203:PRO:HA	1:C:204:LYS:HA	1.86	0.41
1:A:39:ILE:HD12	1:A:201:TYR:HE2	1.85	0.41
1:B:230[A]:ASN:OD1	1:B:231:SER:N	2.54	0.41
1:C:156:LYS:HB2	1:C:156:LYS:HZ2	1.85	0.41
1:B:138:ILE:HD12	1:B:138:ILE:C	2.46	0.40
1:A:28:TYR:HB3	1:A:31:TRP:HB2	2.03	0.40
1:B:233:LEU:HD12	1:B:233:LEU:HA	1.93	0.40
1:B:148:ILE:HB	1:B:157:MET:HE3	2.03	0.40
1:B:253[B]:MET:HE3	1:B:300:TYR:HB3	2.04	0.40

All (1) symmetry-related close contacts are listed below. The label for Atom-2 includes the symmetry operator and encoded unit-cell translations to be applied.

Atom-1	Atom-2	Interatomic distance (Å)	Clash overlap (Å)
1:C:28:TYR:OH	8:A:2222:HOH:O[4_456]	2.16	0.04

5.3 Torsion angles [i](#)

5.3.1 Protein backbone [i](#)

In the following table, the Percentiles column shows the percent Ramachandran outliers of the chain as a percentile score with respect to all X-ray entries followed by that with respect to entries of similar resolution.

The Analysed column shows the number of residues for which the backbone conformation was analysed, and the total number of residues.

Mol	Chain	Analysed	Favoured	Allowed	Outliers	Percentiles	
1	A	404/384 (105%)	390 (96%)	14 (4%)	0	100	100
1	B	400/384 (104%)	391 (98%)	9 (2%)	0	100	100
1	C	379/384 (99%)	369 (97%)	10 (3%)	0	100	100
All	All	1183/1152 (103%)	1150 (97%)	33 (3%)	0	100	100

There are no Ramachandran outliers to report.

5.3.2 Protein sidechains [i](#)

In the following table, the Percentiles column shows the percent sidechain outliers of the chain as a percentile score with respect to all X-ray entries followed by that with respect to entries of similar resolution.

The Analysed column shows the number of residues for which the sidechain conformation was analysed, and the total number of residues.

Mol	Chain	Analysed	Rotameric	Outliers	Percentiles	
1	A	372/350 (106%)	369 (99%)	3 (1%)	73	61
1	B	368/350 (105%)	359 (98%)	9 (2%)	43	20
1	C	350/350 (100%)	342 (98%)	8 (2%)	44	21
All	All	1090/1050 (104%)	1070 (98%)	20 (2%)	55	29

All (20) residues with a non-rotameric sidechain are listed below:

Mol	Chain	Res	Type
1	A	136	LYS
1	A	228	SER
1	A	232	ARG
1	B	27	ASP
1	B	39	ILE

Continued on next page...

Continued from previous page...

Mol	Chain	Res	Type
1	B	156[A]	LYS
1	B	156[B]	LYS
1	B	228	SER
1	B	230[A]	ASN
1	B	230[B]	ASN
1	B	294	GLU
1	B	325	ASP
1	C	156	LYS
1	C	224	ILE
1	C	244	VAL
1	C	266	LYS
1	C	294[A]	GLU
1	C	294[B]	GLU
1	C	373	LYS
1	C	396	LYS

Sometimes sidechains can be flipped to improve hydrogen bonding and reduce clashes. All (21) such sidechains are listed below:

Mol	Chain	Res	Type
1	A	34	GLN
1	A	101	ASN
1	A	249	ASN
1	A	320	GLN
1	A	350	GLN
1	A	359	ASN
1	A	372	ASN
1	B	34	GLN
1	B	55	ASN
1	B	106	ASN
1	B	135	ASN
1	B	249	ASN
1	B	295	ASN
1	B	320	GLN
1	B	360	ASN
1	B	372	ASN
1	C	34	GLN
1	C	40	ASN
1	C	101	ASN
1	C	320	GLN
1	C	372	ASN

5.3.3 RNA [i](#)

There are no RNA molecules in this entry.

5.4 Non-standard residues in protein, DNA, RNA chains [i](#)

There are no non-standard protein/DNA/RNA residues in this entry.

5.5 Carbohydrates [i](#)

There are no oligosaccharides in this entry.

5.6 Ligand geometry [i](#)

Of 17 ligands modelled in this entry, 7 are monoatomic - leaving 10 for Mogul analysis.

In the following table, the Counts columns list the number of bonds (or angles) for which Mogul statistics could be retrieved, the number of bonds (or angles) that are observed in the model and the number of bonds (or angles) that are defined in the Chemical Component Dictionary. The Link column lists molecule types, if any, to which the group is linked. The Z score for a bond length (or angle) is the number of standard deviations the observed value is removed from the expected value. A bond length (or angle) with $|Z| > 2$ is considered an outlier worth inspection. RMSZ is the root-mean-square of all Z scores of the bond lengths (or angles).

Mol	Type	Chain	Res	Link	Bond lengths			Bond angles		
					Counts	RMSZ	# Z > 2	Counts	RMSZ	# Z > 2
4	YNE	B	1001	-	34,34,34	2.23	10 (29%)	43,49,49	2.32	18 (41%)
4	YNE	A	1001	-	34,34,34	2.61	12 (35%)	43,49,49	2.52	17 (39%)
3	NHW	A	1000	6	64,66,66	1.65	8 (12%)	87,92,92	1.62	14 (16%)
2	DMS	A	999	-	3,3,3	0.36	0	3,3,3	0.81	0
2	DMS	C	999	-	3,3,3	0.69	0	3,3,3	1.39	1 (33%)
3	NHW	B	1000	6	64,66,66	1.81	12 (18%)	87,92,92	1.48	17 (19%)
4	YNE	C	1001	-	34,34,34	2.37	10 (29%)	43,49,49	2.65	16 (37%)
5	SO4	A	1411	-	4,4,4	0.42	0	6,6,6	1.63	2 (33%)
3	NHW	C	1000	6	64,66,66	1.64	9 (14%)	87,92,92	1.83	17 (19%)
2	DMS	B	999	-	3,3,3	0.70	0	3,3,3	0.80	0

In the following table, the Chirals column lists the number of chiral outliers, the number of chiral centers analysed, the number of these observed in the model and the number defined in the Chemical Component Dictionary. Similar counts are reported in the Torsion and Rings columns. '-' means no outliers of that kind were identified.

Mol	Type	Chain	Res	Link	Chirals	Torsions	Rings
4	YNE	B	1001	-	-	2/12/20/20	0/5/5/5
4	YNE	A	1001	-	-	0/12/20/20	0/5/5/5
3	NHW	A	1000	6	-	1/65/81/81	0/3/3/3
3	NHW	B	1000	6	-	5/65/81/81	0/3/3/3
4	YNE	C	1001	-	-	2/12/20/20	0/5/5/5
3	NHW	C	1000	6	-	4/65/81/81	0/3/3/3

All (61) bond length outliers are listed below:

Mol	Chain	Res	Type	Atoms	Z	Observed(Å)	Ideal(Å)
4	A	1001	YNE	C10-C9	7.99	1.49	1.37
3	B	1000	NHW	P2A-O3A	-7.56	1.51	1.59
4	C	1001	YNE	C8-N3	6.86	1.35	1.29
4	B	1001	YNE	C10-C9	5.98	1.46	1.37
3	A	1000	NHW	P2A-O3A	-5.96	1.53	1.59
3	C	1000	NHW	P1A-O3A	5.76	1.65	1.59
3	B	1000	NHW	P1A-O3A	5.72	1.65	1.59
4	C	1001	YNE	C16-C21	5.47	1.49	1.41
4	A	1001	YNE	C16-C21	5.45	1.49	1.41
4	C	1001	YNE	C10-C9	5.40	1.45	1.37
3	C	1000	NHW	P3X-O3X	5.33	1.68	1.59
3	A	1000	NHW	C12-C11	4.86	1.60	1.52
4	B	1001	YNE	C7-N2	4.82	1.34	1.28
4	B	1001	YNE	C5-C1	4.62	1.51	1.40
4	C	1001	YNE	C7-N2	4.50	1.34	1.28
4	B	1001	YNE	C8-N3	4.19	1.32	1.29
4	A	1001	YNE	C7-N2	4.10	1.33	1.28
4	C	1001	YNE	C5-C1	3.97	1.49	1.40
3	A	1000	NHW	C3-N4	3.72	1.54	1.46
3	C	1000	NHW	CP-C1M	3.66	1.57	1.51
4	B	1001	YNE	C16-C21	3.62	1.46	1.41
4	A	1001	YNE	C3-C5	3.54	1.47	1.40
4	A	1001	YNE	C21-S	-3.52	1.67	1.74
4	B	1001	YNE	O-C7	-3.51	1.31	1.36
4	A	1001	YNE	C19-C20	3.50	1.44	1.38
4	A	1001	YNE	C8-N3	3.32	1.32	1.29
4	A	1001	YNE	O-C8	-3.32	1.30	1.37
3	B	1000	NHW	C5X-C4X	3.15	1.61	1.51
4	C	1001	YNE	C1-N	3.15	1.38	1.32
3	B	1000	NHW	O10-C10	3.07	1.47	1.42
4	A	1001	YNE	C5-C1	3.05	1.47	1.40
3	A	1000	NHW	P3X-O3X	2.96	1.64	1.59

Continued on next page...

Continued from previous page...

Mol	Chain	Res	Type	Atoms	Z	Observed(Å)	Ideal(Å)
3	C	1000	NHW	O4X-C4X	2.89	1.51	1.45
3	B	1000	NHW	CP-S1	2.85	1.88	1.81
4	A	1001	YNE	C17-C16	2.84	1.44	1.39
3	A	1000	NHW	C8A-N7A	2.84	1.37	1.31
4	A	1001	YNE	C18-C17	2.83	1.43	1.38
3	C	1000	NHW	P2A-O4A	-2.82	1.42	1.55
3	B	1000	NHW	P3X-O3X	2.75	1.64	1.59
4	B	1001	YNE	C3-C5	2.73	1.46	1.40
3	B	1000	NHW	O4X-C1X	2.71	1.48	1.42
3	C	1000	NHW	C8A-N7A	2.68	1.36	1.31
4	B	1001	YNE	C19-C20	2.67	1.43	1.38
3	B	1000	NHW	O6A-C12	2.63	1.52	1.43
3	C	1000	NHW	O10-C10	2.46	1.46	1.42
3	A	1000	NHW	C7-C6	2.38	1.59	1.51
3	A	1000	NHW	C8A-N9A	-2.37	1.33	1.37
3	B	1000	NHW	C2X-C3X	2.35	1.58	1.53
4	C	1001	YNE	C18-C17	2.32	1.42	1.38
4	B	1001	YNE	C9-S	-2.29	1.70	1.74
4	C	1001	YNE	C6-C5	-2.26	1.47	1.51
3	C	1000	NHW	C5A-N7A	-2.24	1.35	1.39
3	A	1000	NHW	O2X-C2X	2.20	1.48	1.43
4	A	1001	YNE	C9-S	-2.15	1.70	1.74
4	B	1001	YNE	C2-N1	2.11	1.50	1.46
3	C	1000	NHW	O1M-C1M	2.08	1.25	1.21
3	B	1000	NHW	C13-C11	2.08	1.58	1.53
4	C	1001	YNE	C17-C16	2.06	1.43	1.39
3	B	1000	NHW	C3M-C2M	2.05	1.59	1.52
4	C	1001	YNE	C21-S	-2.03	1.70	1.74
3	B	1000	NHW	C7-N8	2.01	1.50	1.46

All (102) bond angle outliers are listed below:

Mol	Chain	Res	Type	Atoms	Z	Observed(°)	Ideal(°)
3	C	1000	NHW	N3A-C2A-N1A	-7.65	117.01	128.58
4	C	1001	YNE	C8-N3-N2	-7.03	100.52	106.03
4	B	1001	YNE	C10-C9-S	-6.51	106.74	111.49
4	A	1001	YNE	O-C8-N3	6.50	119.09	113.00
4	A	1001	YNE	C21-S-C9	6.39	97.82	91.02
4	C	1001	YNE	O-C8-N3	5.68	118.32	113.00
3	A	1000	NHW	C5A-C4A-N3A	-5.64	118.94	126.72
4	B	1001	YNE	C8-N3-N2	-5.64	101.61	106.03
3	C	1000	NHW	C5A-C4A-N3A	-5.33	119.37	126.72

Continued on next page...

Continued from previous page...

Mol	Chain	Res	Type	Atoms	Z	Observed(°)	Ideal(°)
4	B	1001	YNE	C21-S-C9	5.21	96.56	91.02
4	C	1001	YNE	C20-C21-C16	-5.06	116.16	121.47
4	C	1001	YNE	C10-C9-S	-4.92	107.91	111.49
3	A	1000	NHW	C4A-C5A-N7A	-4.84	105.05	110.58
3	C	1000	NHW	C2A-N3A-C4A	4.72	123.37	111.83
4	A	1001	YNE	C5-C1-N	-4.70	105.99	111.37
4	C	1001	YNE	C7-N2-N3	4.61	108.75	106.25
4	C	1001	YNE	C5-C1-N	-4.52	106.20	111.37
4	A	1001	YNE	C8-N3-N2	-4.40	102.58	106.03
3	C	1000	NHW	N3A-C4A-N9A	4.35	134.56	127.17
3	C	1000	NHW	N9A-C8A-N7A	-4.32	107.81	113.94
3	A	1000	NHW	C2-C3-N4	-4.30	103.44	112.41
4	C	1001	YNE	C21-S-C9	4.29	95.58	91.02
3	B	1000	NHW	C5A-C4A-N3A	-4.10	121.06	126.72
4	A	1001	YNE	O-C7-C6	4.05	121.51	117.72
4	B	1001	YNE	C5-C1-N	-3.86	106.95	111.37
3	A	1000	NHW	C5A-C4A-N9A	3.85	110.00	105.81
4	A	1001	YNE	C7-N2-N3	-3.84	104.16	106.25
4	A	1001	YNE	C1-N-N1	3.81	109.80	105.55
3	C	1000	NHW	C4A-N9A-C8A	3.78	109.71	105.74
3	A	1000	NHW	C6A-C5A-C4A	3.77	122.32	117.18
3	B	1000	NHW	P3X-O3X-C3X	-3.70	113.56	123.43
4	A	1001	YNE	C19-C18-C17	3.63	124.71	120.24
3	C	1000	NHW	O1M-C1M-CP	-3.53	117.14	122.17
4	C	1001	YNE	C21-C16-C10	-3.48	105.41	110.45
3	A	1000	NHW	C2-S1-CP	-3.45	96.03	101.72
3	C	1000	NHW	C13-C11-C10	3.44	114.63	108.77
4	C	1001	YNE	O-C7-C6	3.43	120.93	117.72
3	B	1000	NHW	O1M-C1M-CP	-3.43	117.28	122.17
3	B	1000	NHW	N3A-C4A-N9A	3.27	132.73	127.17
3	A	1000	NHW	C5A-N7A-C8A	3.26	108.58	103.45
3	A	1000	NHW	N9A-C8A-N7A	-3.26	109.31	113.94
4	B	1001	YNE	C6-C7-N2	3.25	128.78	118.34
4	C	1001	YNE	C-C1-N	3.20	125.61	119.39
3	A	1000	NHW	CP-C1M-C2M	3.19	122.29	115.55
3	C	1000	NHW	P3X-O3X-C3X	-3.05	115.30	123.43
3	B	1000	NHW	C4A-N9A-C8A	2.99	108.88	105.74
4	C	1001	YNE	C17-C16-C21	2.97	122.16	118.77
3	C	1000	NHW	C2-S1-CP	2.96	106.61	101.72
4	A	1001	YNE	C7-O-C8	-2.95	99.87	102.67
4	A	1001	YNE	C4-C3-N1	2.93	127.60	122.97
4	A	1001	YNE	C12-C13-N4	2.88	116.24	110.81

Continued on next page...

Continued from previous page...

Mol	Chain	Res	Type	Atoms	Z	Observed(°)	Ideal(°)
3	C	1000	NHW	C2A-N1A-C6A	2.83	123.39	118.73
4	C	1001	YNE	C7-O-C8	-2.83	99.99	102.67
4	B	1001	YNE	C2-N1-C3	2.79	130.64	128.09
4	A	1001	YNE	C15-C14-N4	-2.75	105.63	110.81
4	B	1001	YNE	C-C1-N	2.74	124.71	119.39
4	B	1001	YNE	C1-N-N1	2.73	108.60	105.55
3	B	1000	NHW	O10-C10-C11	-2.70	103.92	110.18
3	B	1000	NHW	C13-C11-C10	2.67	113.32	108.77
3	A	1000	NHW	O1M-C1M-CP	-2.66	118.38	122.17
3	B	1000	NHW	N9A-C8A-N7A	-2.65	110.18	113.94
4	C	1001	YNE	C15-C14-N4	-2.65	105.82	110.81
4	B	1001	YNE	C21-C16-C10	-2.64	106.64	110.45
4	B	1001	YNE	O-C8-N3	2.58	115.42	113.00
4	C	1001	YNE	C6-C7-N2	2.57	126.61	118.34
5	A	1411	SO4	O3-S-O2	-2.53	96.36	109.56
3	B	1000	NHW	C13-C11-C12	-2.51	104.08	108.22
3	B	1000	NHW	C2-C3-N4	-2.50	107.19	112.41
4	B	1001	YNE	C7-N2-N3	2.49	107.60	106.25
4	C	1001	YNE	C2-N1-N	-2.49	115.57	119.29
4	A	1001	YNE	C10-C9-S	-2.48	109.68	111.49
4	A	1001	YNE	C18-C17-C16	-2.46	115.34	119.80
3	A	1000	NHW	C5X-C4X-C3X	-2.45	106.23	114.38
4	B	1001	YNE	C20-C21-C16	-2.42	118.93	121.47
4	B	1001	YNE	C15-C14-N4	-2.41	106.27	110.81
4	B	1001	YNE	C8-C9-S	2.39	124.84	116.91
4	B	1001	YNE	C2-N1-N	-2.39	115.72	119.29
3	C	1000	NHW	O3A-P2A-O5A	-2.38	103.54	110.70
3	C	1000	NHW	O2A-P1A-O3A	2.34	113.61	107.27
3	B	1000	NHW	N3A-C2A-N1A	-2.34	125.03	128.58
3	C	1000	NHW	C5A-N7A-C8A	2.29	107.05	103.45
3	A	1000	NHW	N3A-C4A-N9A	2.28	131.05	127.17
4	B	1001	YNE	C16-C10-C9	2.28	117.46	114.01
3	A	1000	NHW	C6-C7-N8	-2.26	107.19	112.00
5	A	1411	SO4	O3-S-O1	-2.25	97.80	109.56
3	C	1000	NHW	C2-C3-N4	-2.25	107.72	112.41
3	B	1000	NHW	O3A-P2A-O5A	-2.24	103.97	110.70
4	B	1001	YNE	C12-C13-N4	2.23	115.00	110.81
4	C	1001	YNE	C2-N1-C3	2.20	130.10	128.09
3	A	1000	NHW	C2A-N3A-C4A	2.18	117.15	111.83
3	B	1000	NHW	O2A-P1A-O3A	2.17	113.15	107.27
3	B	1000	NHW	O4A-P2A-O3A	2.17	113.13	107.27
3	C	1000	NHW	O7A-P3X-O9A	2.15	119.22	110.83

Continued on next page...

Continued from previous page...

Mol	Chain	Res	Type	Atoms	Z	Observed(°)	Ideal(°)
4	A	1001	YNE	C16-C10-C9	-2.15	110.75	114.01
3	B	1000	NHW	O6A-C12-C11	-2.15	107.09	110.55
4	A	1001	YNE	C11-O1-C10	-2.14	112.21	122.72
4	A	1001	YNE	C8-C9-S	2.09	123.83	116.91
4	B	1001	YNE	C17-C16-C21	2.08	121.13	118.77
3	B	1000	NHW	C6-C5-N4	-2.06	112.59	116.34
2	C	999	DMS	C2-S-C1	2.04	108.87	98.42
3	C	1000	NHW	O5-C5-C6	-2.02	118.36	122.02
3	B	1000	NHW	C6A-C5A-C4A	2.01	119.92	117.18

There are no chirality outliers.

All (14) torsion outliers are listed below:

Mol	Chain	Res	Type	Atoms
3	C	1000	NHW	C12-O6A-P2A-O5A
3	B	1000	NHW	C6-C7-N8-C9
3	B	1000	NHW	C12-O6A-P2A-O5A
4	C	1001	YNE	O-C8-C9-S
3	C	1000	NHW	C7M-C8M-C9M-CAM
3	B	1000	NHW	C7M-C8M-C9M-CAM
3	B	1000	NHW	C9M-CAM-CBM-CCM
3	B	1000	NHW	P2A-O3A-P1A-O1A
3	C	1000	NHW	C11-C12-O6A-P2A
4	B	1001	YNE	O-C8-C9-C10
3	A	1000	NHW	C3-C2-S1-CP
4	B	1001	YNE	N3-C8-C9-S
4	C	1001	YNE	N3-C8-C9-S
3	C	1000	NHW	P2A-O3A-P1A-O1A

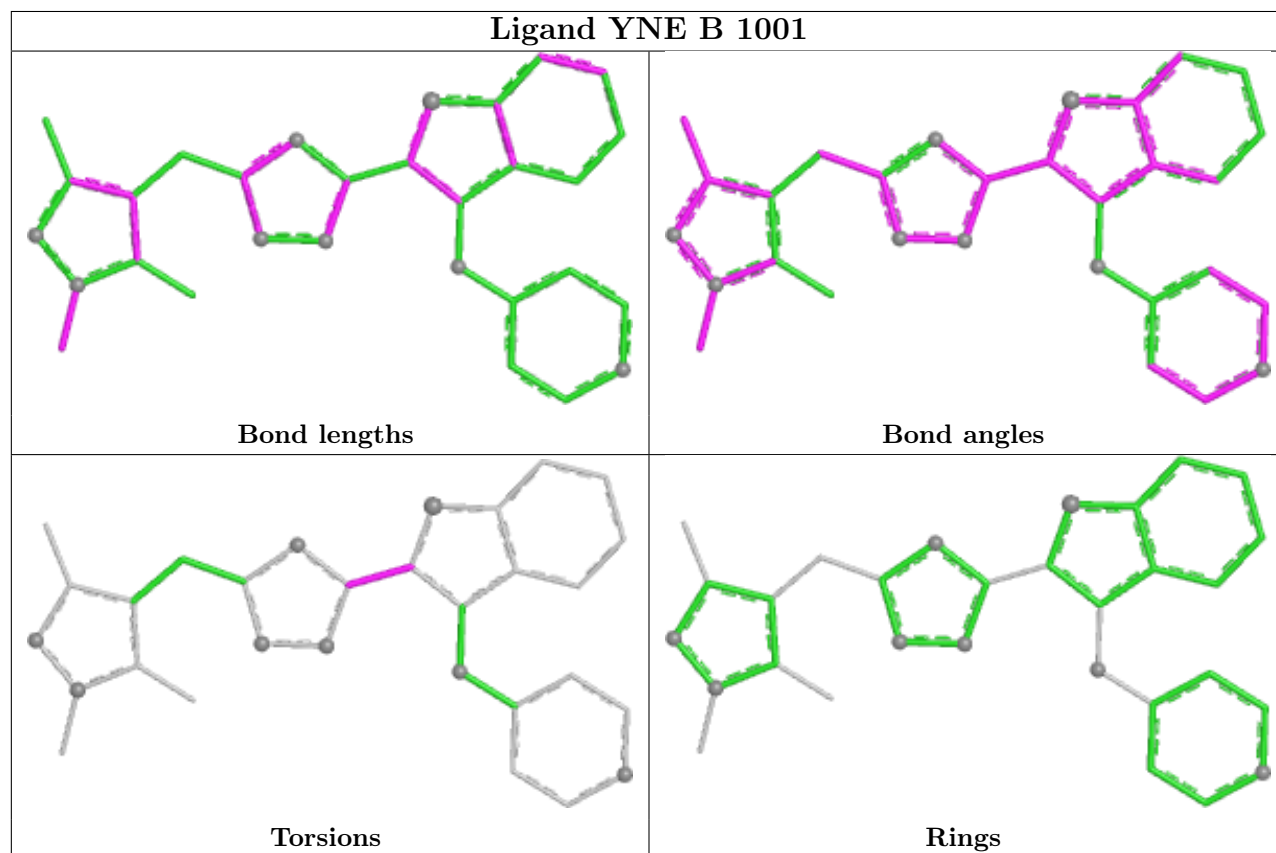
There are no ring outliers.

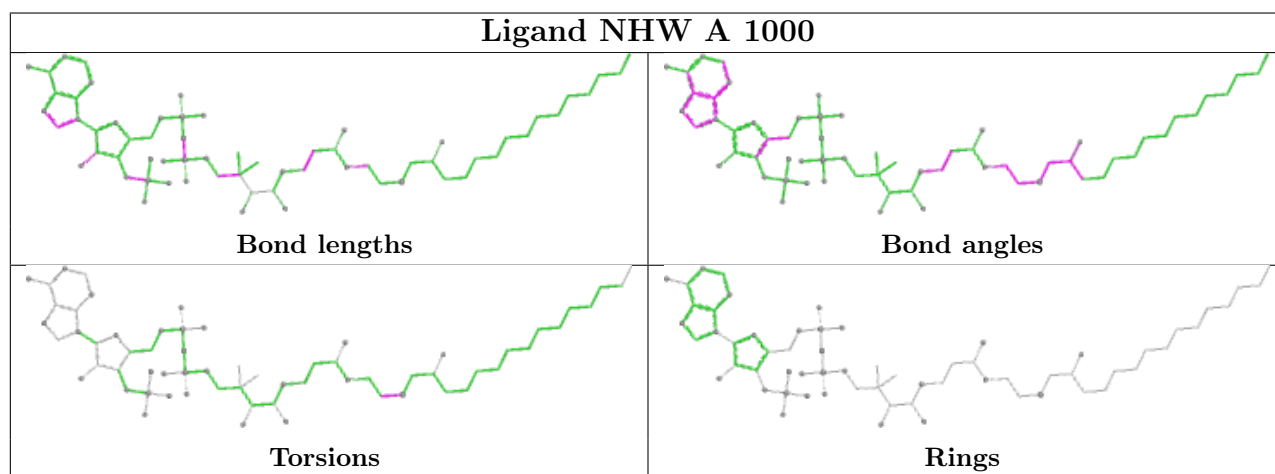
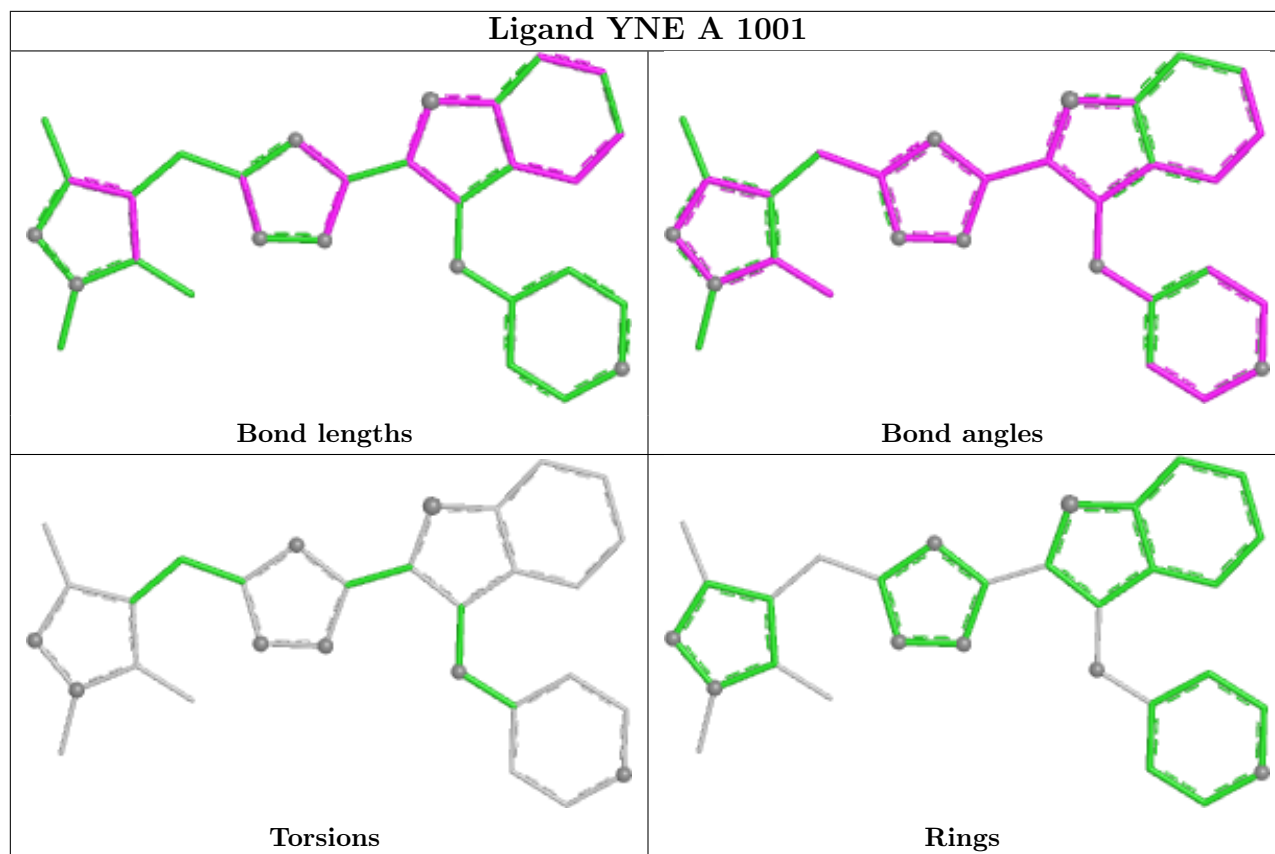
3 monomers are involved in 3 short contacts:

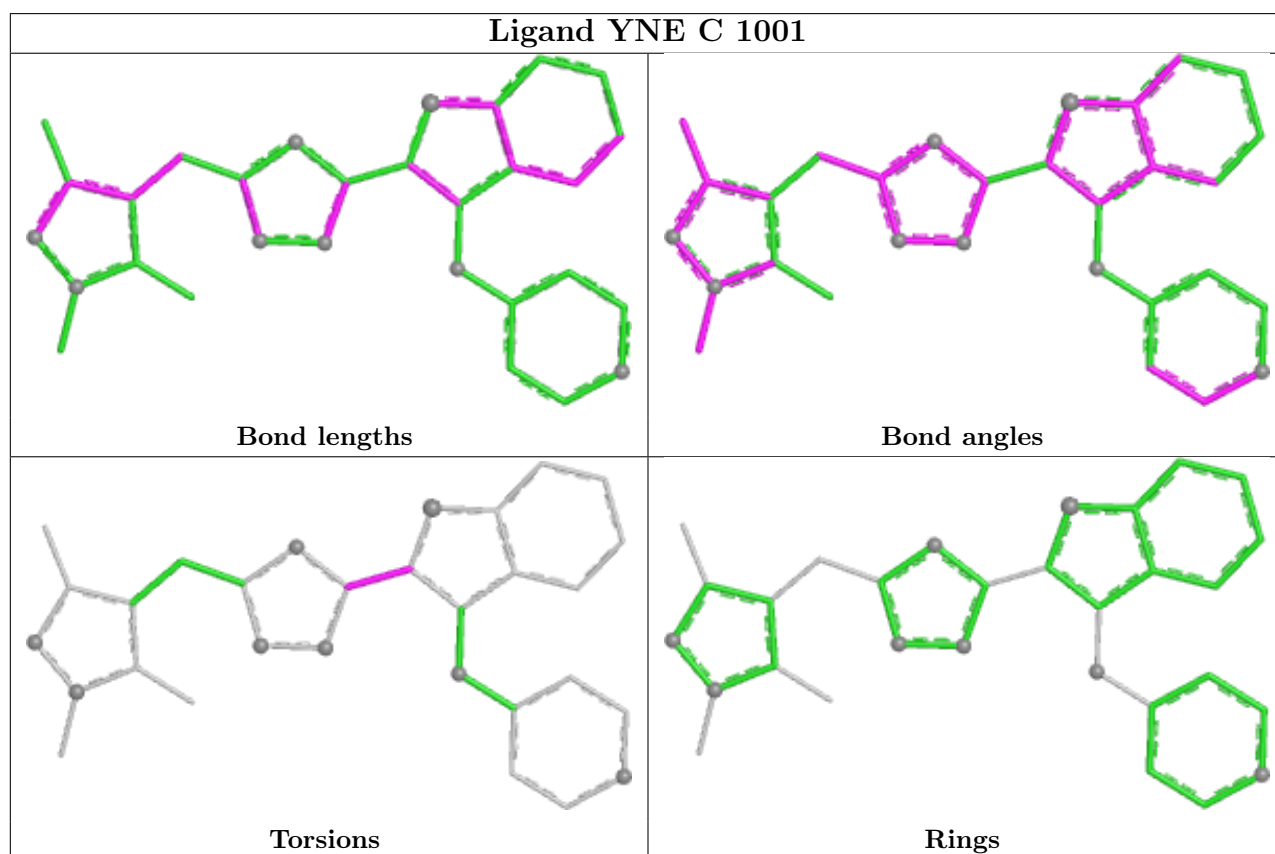
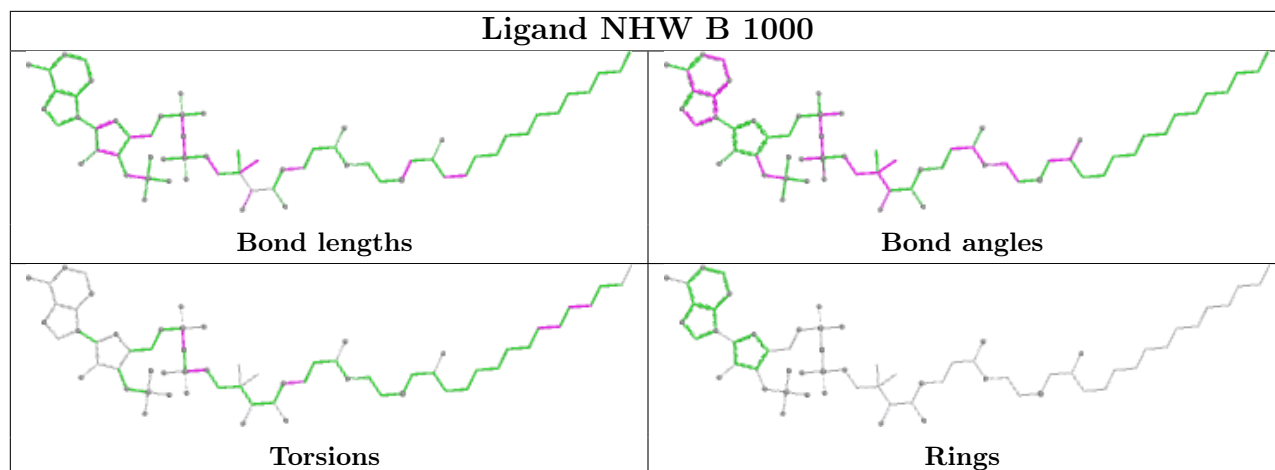
Mol	Chain	Res	Type	Clashes	Symm-Clashes
4	B	1001	YNE	1	0
4	A	1001	YNE	1	0
4	C	1001	YNE	1	0

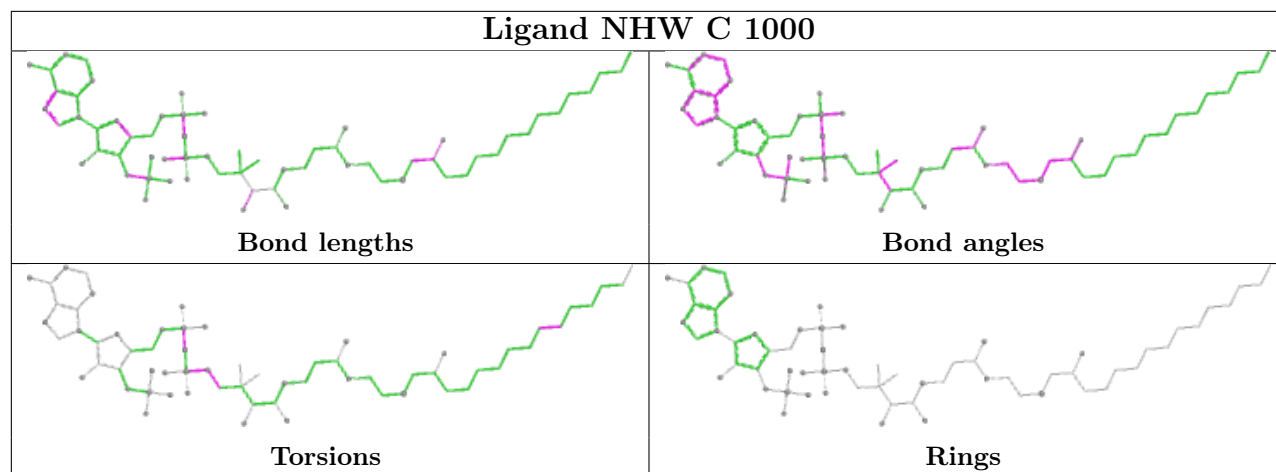
The following is a two-dimensional graphical depiction of Mogul quality analysis of bond lengths, bond angles, torsion angles, and ring geometry for all instances of the Ligand of Interest. In addition, ligands with molecular weight > 250 and outliers as shown on the validation Tables will also be included. For torsion angles, if less than 5% of the Mogul distribution of torsion angles is within 10 degrees of the torsion angle in question, then that torsion angle is considered an outlier.

Any bond that is central to one or more torsion angles identified as an outlier by Mogul will be highlighted in the graph. For rings, the root-mean-square deviation (RMSD) between the ring in question and similar rings identified by Mogul is calculated over all ring torsion angles. If the average RMSD is greater than 60 degrees and the minimal RMSD between the ring in question and any Mogul-identified rings is also greater than 60 degrees, then that ring is considered an outlier. The outliers are highlighted in purple. The color gray indicates Mogul did not find sufficient equivalents in the CSD to analyse the geometry.









5.7 Other polymers [\(i\)](#)

There are no such residues in this entry.

5.8 Polymer linkage issues [\(i\)](#)

There are no chain breaks in this entry.

6 Fit of model and data [i](#)

6.1 Protein, DNA and RNA chains [i](#)

In the following table, the column labelled '#RSRZ > 2' contains the number (and percentage) of RSRZ outliers, followed by percent RSRZ outliers for the chain as percentile scores relative to all X-ray entries and entries of similar resolution. The OWAB column contains the minimum, median, 95th percentile and maximum values of the occupancy-weighted average B-factor per residue. The column labelled 'Q < 0.9' lists the number of (and percentage) of residues with an average occupancy less than 0.9.

Mol	Chain	Analysed	<RSRZ>	#RSRZ>2	OWAB(Å ²)	Q<0.9
1	A	384/384 (100%)	-0.55	3 (0%) 82 87	6, 14, 27, 75	34 (8%)
1	B	384/384 (100%)	-0.58	4 (1%) 79 83	8, 14, 30, 68	28 (7%)
1	C	367/384 (95%)	-0.48	1 (0%) 90 92	9, 15, 30, 56	27 (7%)
All	All	1135/1152 (98%)	-0.54	8 (0%) 84 88	6, 14, 30, 75	89 (7%)

All (8) RSRZ outliers are listed below:

Mol	Chain	Res	Type	RSRZ
1	A	230	ASN	3.1
1	B	230[A]	ASN	2.9
1	C	27	ASP	2.7
1	B	27	ASP	2.6
1	B	231	SER	2.6
1	A	231	SER	2.5
1	B	305	ASN	2.3
1	A	229	LEU	2.2

6.2 Non-standard residues in protein, DNA, RNA chains [i](#)

There are no non-standard protein/DNA/RNA residues in this entry.

6.3 Carbohydrates [i](#)

There are no oligosaccharides in this entry.

6.4 Ligands [i](#)

In the following table, the Atoms column lists the number of modelled atoms in the group and the number defined in the chemical component dictionary. The B-factors column lists the minimum,

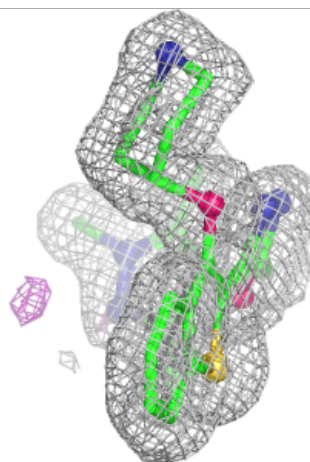
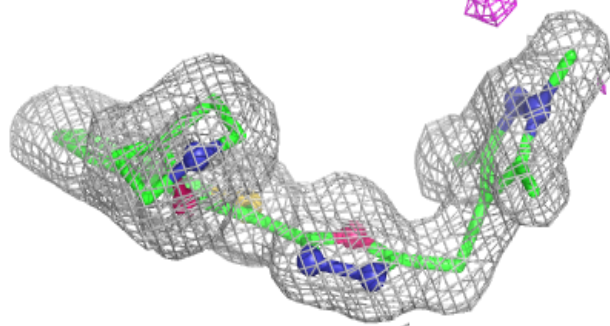
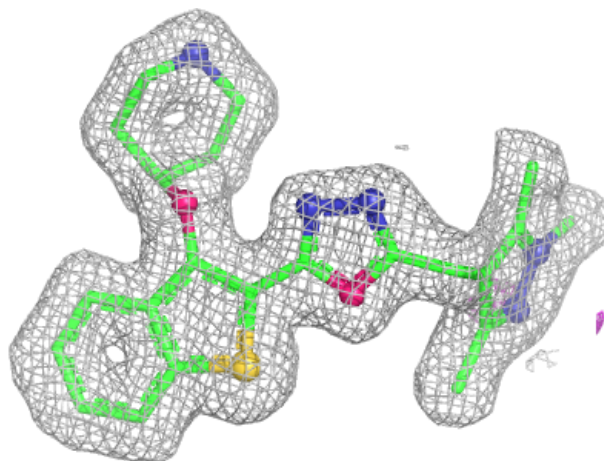
median, 95th percentile and maximum values of B factors of atoms in the group. The column labelled 'Q< 0.9' lists the number of atoms with occupancy less than 0.9.

Mol	Type	Chain	Res	Atoms	RSCC	RSR	B-factors(Å ²)	Q<0.9
5	SO4	A	1411	5/5	0.92	0.10	35,40,47,49	0
2	DMS	A	999	4/4	0.97	0.08	17,18,22,22	0
6	MG	B	1411	1/1	0.97	0.04	26,26,26,26	0
4	YNE	A	1001	30/30	0.98	0.04	10,13,15,16	0
4	YNE	B	1001	30/30	0.98	0.04	9,12,15,16	0
4	YNE	C	1001	30/30	0.98	0.04	12,15,17,21	0
2	DMS	C	999	4/4	0.98	0.10	8,8,10,10	4
3	NHW	A	1000	64/64	0.98	0.04	9,12,14,17	0
7	CL	A	1413	1/1	0.98	0.05	36,36,36,36	0
2	DMS	B	999	4/4	0.99	0.07	18,21,21,23	0
3	NHW	B	1000	64/64	0.99	0.03	8,12,15,17	0
6	MG	C	1411	1/1	0.99	0.08	22,22,22,22	0
3	NHW	C	1000	64/64	0.99	0.04	8,12,17,21	0
7	CL	B	1412	1/1	0.99	0.02	13,13,13,13	0
7	CL	A	1414	1/1	1.00	0.02	12,12,12,12	0
6	MG	A	1412	1/1	1.00	0.06	23,23,23,23	0
7	CL	C	1412	1/1	1.00	0.05	14,14,14,14	0

The following is a graphical depiction of the model fit to experimental electron density of all instances of the Ligand of Interest. In addition, ligands with molecular weight > 250 and outliers as shown on the geometry validation Tables will also be included. Each fit is shown from different orientation to approximate a three-dimensional view.

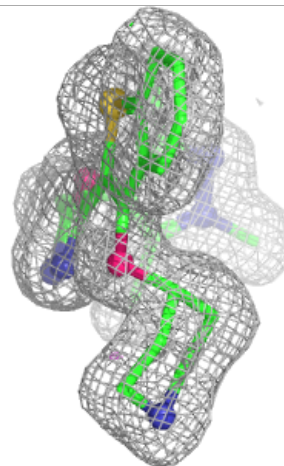
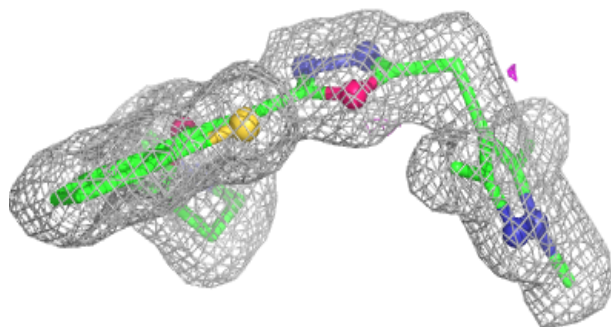
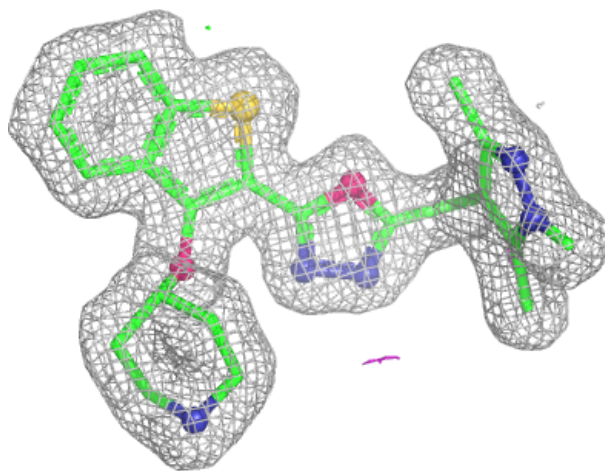
Electron density around YNE A 1001:

$2mF_o-DF_c$ (at 0.7 rmsd) in gray
 mF_o-DF_c (at 3 rmsd) in purple (negative)
and green (positive)



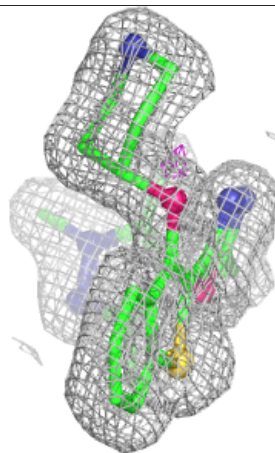
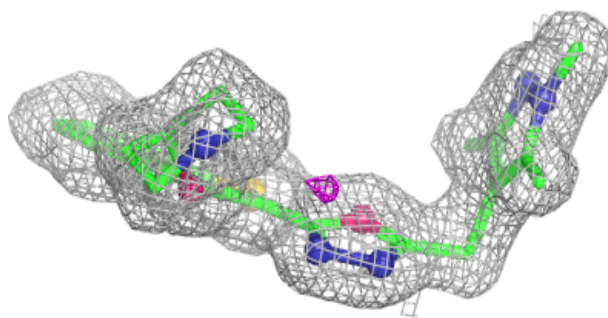
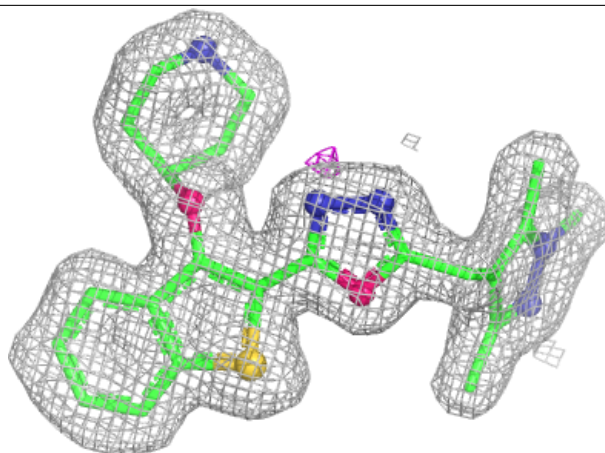
Electron density around YNE B 1001:

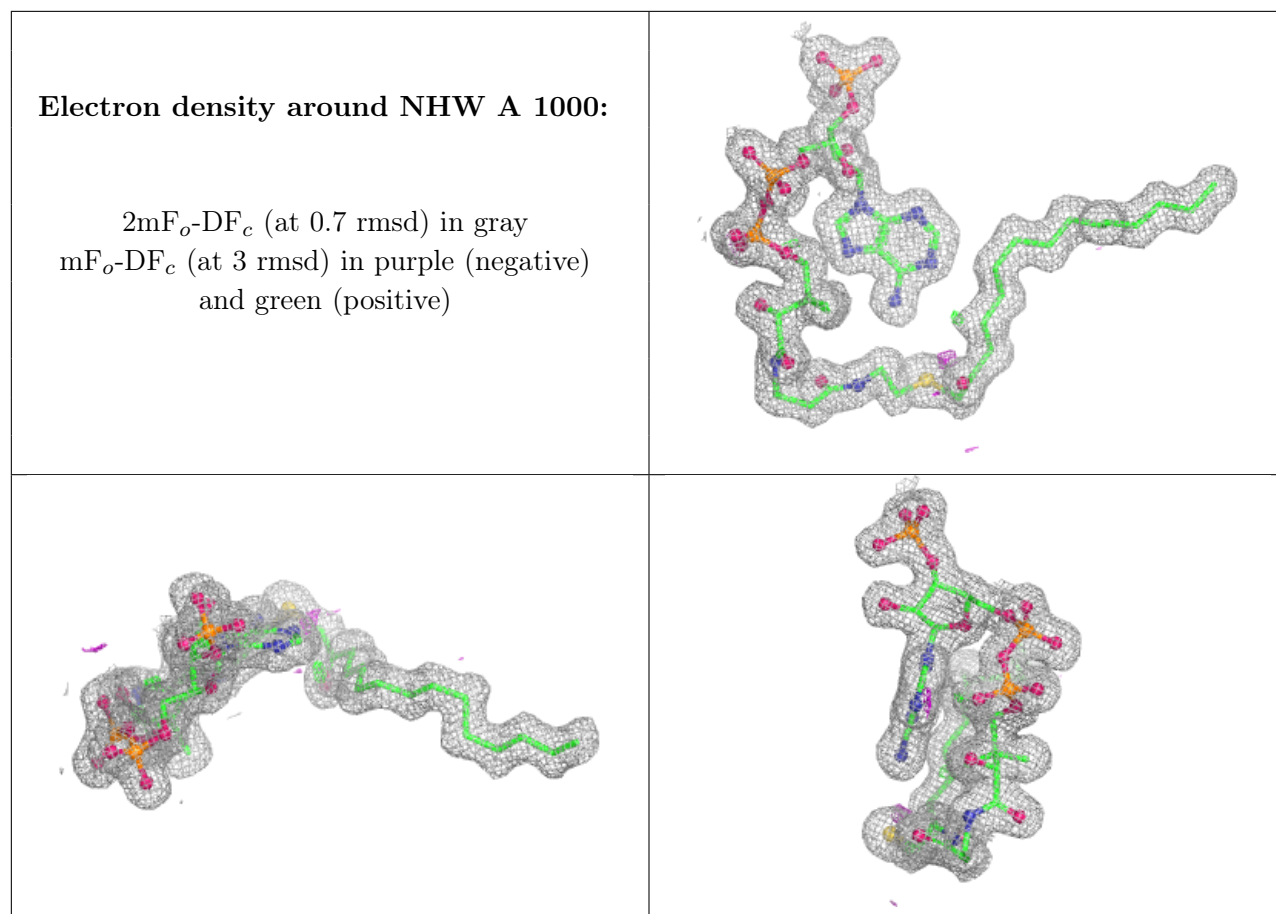
$2mF_o-DF_c$ (at 0.7 rmsd) in gray
 mF_o-DF_c (at 3 rmsd) in purple (negative)
and green (positive)



Electron density around YNE C 1001:

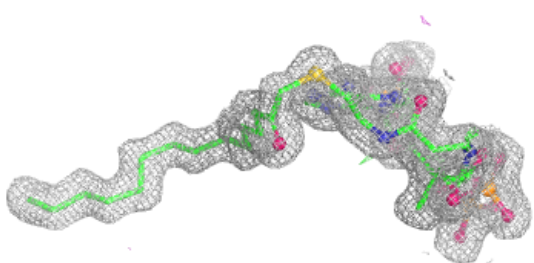
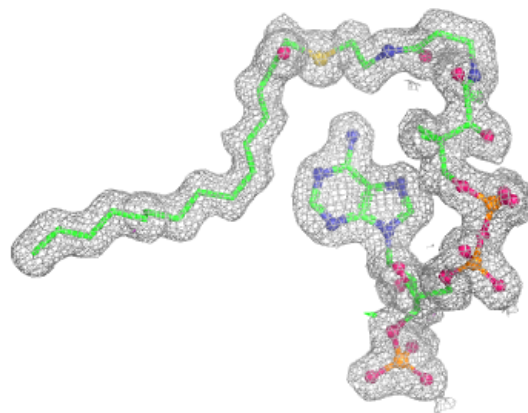
$2mF_o-DF_c$ (at 0.7 rmsd) in gray
 mF_o-DF_c (at 3 rmsd) in purple (negative)
and green (positive)



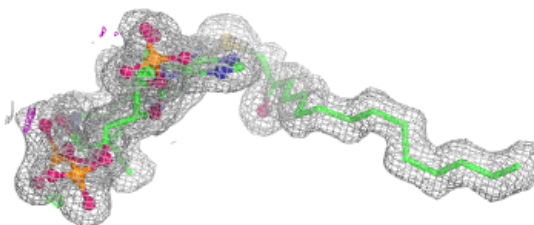
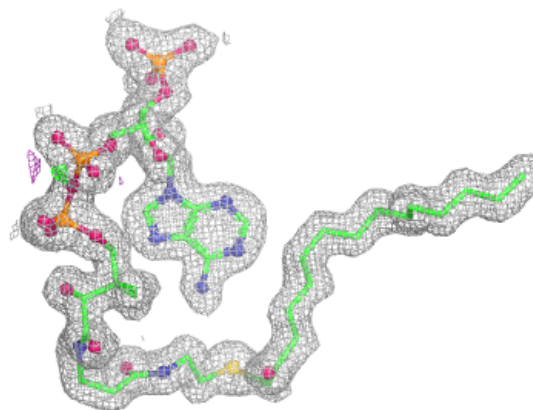


Electron density around NHW B 1000:

$2mF_o-DF_c$ (at 0.7 rmsd) in gray
 mF_o-DF_c (at 3 rmsd) in purple (negative)
and green (positive)

**Electron density around NHW C 1000:**

$2mF_o-DF_c$ (at 0.7 rmsd) in gray
 mF_o-DF_c (at 3 rmsd) in purple (negative)
and green (positive)



6.5 Other polymers [i](#)

There are no such residues in this entry.