



wwPDB X-ray Structure Validation Summary Report ⓘ

Mar 20, 2026 – 06:19 AM UTC

PDB ID : 7YO7 / pdb_00007yo7
Title : Bifunctional xylosidase/glucosidase LXYL with intermediate substrate xylose,
5 seconds
Authors : Yang, L.Y.
Deposited on : 2022-08-01
Resolution : 1.81 Å(reported)

This is a wwPDB X-ray Structure Validation Summary Report for a publicly released PDB entry.

We welcome your comments at validation@mail.wwpdb.org

A user guide is available at

<https://www.wwpdb.org/validation/2017/XrayValidationReportHelp>

with specific help available everywhere you see the ⓘ symbol.

The types of validation reports are described at

<http://www.wwpdb.org/validation/2017/FAQs#types>.

The following versions of software and data (see [references ⓘ](#)) were used in the production of this report:

MolProbity : 4-5-2 with Phenix2.0
Mogul : 2022.3.0, CSD as543be (2022)
Xtrriage (Phenix) : 2.0
EDS : 3.0
Buster-report : wwPDB partial adaption of 1.1.7 (2018)
Percentile statistics : 20250101.v01 (using entries in the PDB archive January 1st 2025)
CCP4 : 9.0.010 (Gargrove)
Density-Fitness : 1.0.12
Ideal geometry (proteins) : Engh & Huber (2001)
Ideal geometry (DNA, RNA) : Parkinson et al. (1996)
Validation Pipeline (wwPDB-VP) : 2.49

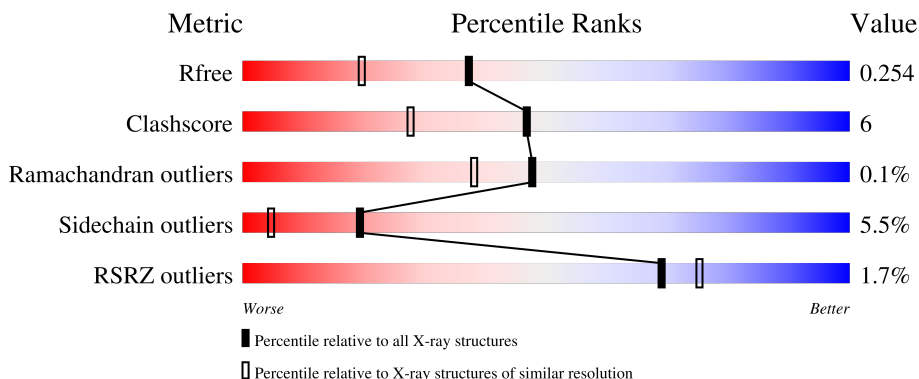
1 Overall quality at a glance

The following experimental techniques were used to determine the structure:

X-RAY DIFFRACTION

The reported resolution of this entry is 1.81 Å.

Percentile scores (ranging between 0-100) for global validation metrics of the entry are shown in the following graphic. The table shows the number of entries on which the scores are based.



Metric	Whole archive (#Entries)	Similar resolution (#Entries, resolution range(Å))
R_{free}	180053	1112 (1.82-1.82)
Clashscore	190562	1148 (1.82-1.82)
Ramachandran outliers	187476	1140 (1.82-1.82)
Sidechain outliers	187428	1140 (1.82-1.82)
RSRZ outliers	180081	1112 (1.82-1.82)

The table below summarises the geometric issues observed across the polymeric chains and their fit to the electron density. The red, orange, yellow and green segments of the lower bar indicate the fraction of residues that contain outliers for ≥ 3 , 2, 1 and 0 types of geometric quality criteria respectively. A grey segment represents the fraction of residues that are not modelled. The numeric value for each fraction is indicated below the corresponding segment, with a dot representing fractions $\leq 5\%$. The upper red bar (where present) indicates the fraction of residues that have poor fit to the electron density. The numeric value is given above the bar.

Mol	Chain	Length	Quality of chain
1	A	803	82% 10% • 6%
1	B	803	79% 13% •• 6%
2	C	4	75% 25%
3	D	2	100%
3	G	2	100%

Continued on next page...

Continued from previous page...

Mol	Chain	Length	Quality of chain
3	H	2	 100%
3	I	2	 50% 50%
3	J	2	 50% 50%
4	E	2	 100%
4	F	2	 100%

2 Entry composition [i](#)

There are 8 unique types of molecules in this entry. The entry contains 12859 atoms, of which 0 are hydrogens and 0 are deuteriums.

In the tables below, the ZeroOcc column contains the number of atoms modelled with zero occupancy, the AltConf column contains the number of residues with at least one atom in alternate conformation and the Trace column contains the number of residues modelled with at most 2 atoms.

- Molecule 1 is a protein called Beta-D-xylosidase/beta-D-glucosidase.

Mol	Chain	Residues	Atoms					ZeroOcc	AltConf	Trace
			Total	C	N	O	S			
1	A	756	Total 5706	C 3615	N 954	O 1120	S 17	0	0	0
1	B	757	Total 5713	C 3619	N 955	O 1122	S 17	0	0	0

- Molecule 2 is an oligosaccharide called 2-acetamido-2-deoxy-beta-D-glucopyranose-(1-1)-alpha-D-mannopyranose-(3-4)-2-acetamido-2-deoxy-beta-D-glucopyranose-(1-4)-2-acetamido-2-deoxy-beta-D-glucopyranose.

Mol	Chain	Residues	Atoms				ZeroOcc	AltConf	Trace
			Total	C	N	O			
2	C	4	Total 53	C 30	N 3	O 20	0	0	0

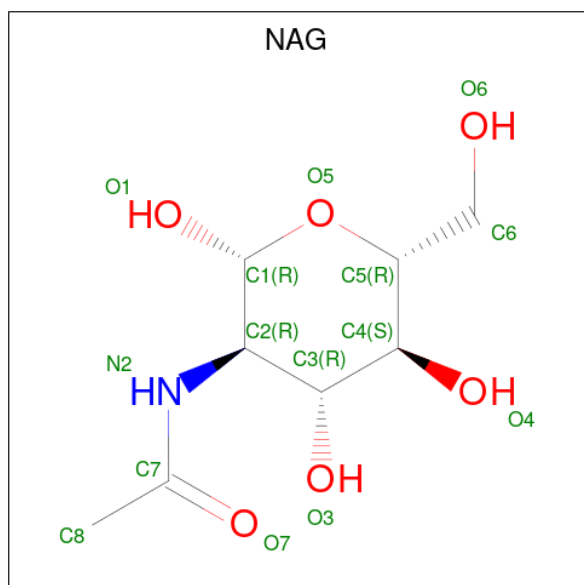
- Molecule 3 is an oligosaccharide called 2-acetamido-2-deoxy-beta-D-glucopyranose-(1-4)-2-acetamido-2-deoxy-beta-D-glucopyranose.

Mol	Chain	Residues	Atoms				ZeroOcc	AltConf	Trace
			Total	C	N	O			
3	D	2	Total 28	C 16	N 2	O 10	0	0	0
3	G	2	Total 28	C 16	N 2	O 10	0	0	0
3	H	2	Total 28	C 16	N 2	O 10	0	0	0
3	I	2	Total 28	C 16	N 2	O 10	0	0	0
3	J	2	Total 28	C 16	N 2	O 10	0	0	0

- Molecule 4 is an oligosaccharide called 2-acetamido-2-deoxy-beta-D-glucopyranose-(1-3)-alpha-D-mannopyranose.

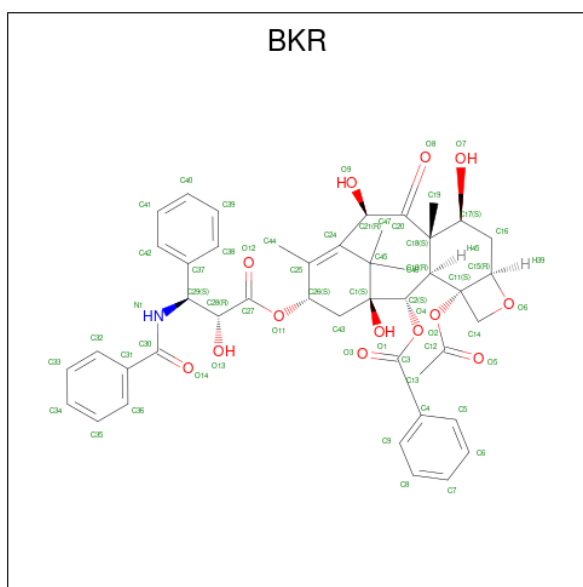
Mol	Chain	Residues	Atoms				ZeroOcc	AltConf	Trace
4	E	2	Total	C	N	O	0	0	0
			25	14	1	10			
4	F	2	Total	C	N	O	0	0	0
			26	14	1	11			

- Molecule 5 is 2-acetamido-2-deoxy-beta-D-glucopyranose (CCD ID: NAG) (formula: $C_8H_{15}NO_6$).



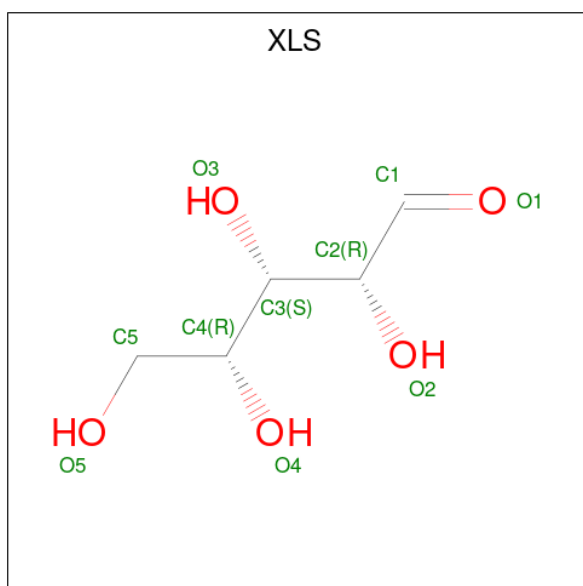
Mol	Chain	Residues	Atoms				ZeroOcc	AltConf
5	A	1	Total	C	N	O	0	0
			14	8	1	5		
5	A	1	Total	C	N	O	0	0
			14	8	1	5		
5	A	1	Total	C	N	O	0	0
			15	8	1	6		
5	A	1	Total	C	N	O	0	0
			14	8	1	5		
5	B	1	Total	C	N	O	0	0
			14	8	1	5		
5	B	1	Total	C	N	O	0	0
			14	8	1	5		

- Molecule 6 is Deacetyltaxol (CCD ID: BKR) (formula: $C_{45}H_{49}NO_{13}$).



Mol	Chain	Residues	Atoms			ZeroOcc	AltConf	
6	A	1	Total	C	N	O	0	0
			59	45	1	13		
6	B	1	Total	C	N	O	0	0
			59	45	1	13		

- Molecule 7 is D-xylose (CCD ID: XLS) (formula: C₅H₁₀O₅) (labeled as "Ligand of Interest" by depositor).



Mol	Chain	Residues	Atoms			ZeroOcc	AltConf
7	A	1	Total	C	O	0	0
			10	5	5		

Continued on next page...

Continued from previous page...

Mol	Chain	Residues	Atoms			ZeroOcc	AltConf
7	B	1	Total	C	O	0	0
			10	5	5		

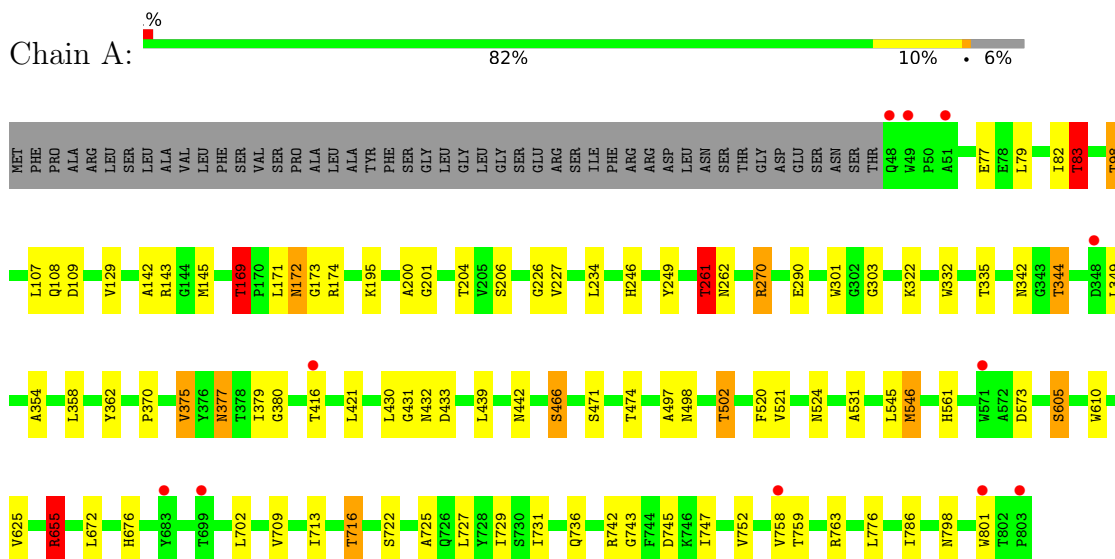
- Molecule 8 is water.

Mol	Chain	Residues	Atoms		ZeroOcc	AltConf
8	A	486	Total	O	0	0
			486	486		
8	B	487	Total	O	0	0
			487	487		

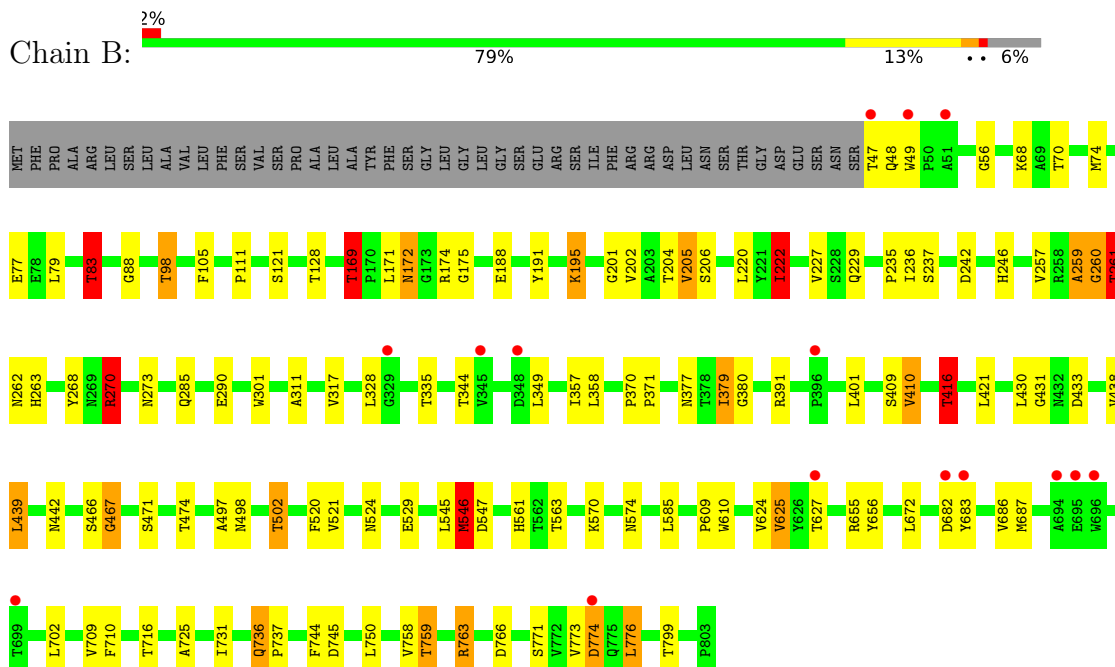
3 Residue-property plots [i](#)

These plots are drawn for all protein, RNA, DNA and oligosaccharide chains in the entry. The first graphic for a chain summarises the proportions of the various outlier classes displayed in the second graphic. The second graphic shows the sequence view annotated by issues in geometry and electron density. Residues are color-coded according to the number of geometric quality criteria for which they contain at least one outlier: green = 0, yellow = 1, orange = 2 and red = 3 or more. A red dot above a residue indicates a poor fit to the electron density ($RSRZ > 2$). Stretches of 2 or more consecutive residues without any outlier are shown as a green connector. Residues present in the sample, but not in the model, are shown in grey.

- Molecule 1: Beta-D-xylosidase/beta-D-glucosidase



- Molecule 1: Beta-D-xylosidase/beta-D-glucosidase



- Molecule 2: 2-acetamido-2-deoxy-beta-D-glucopyranose-(1-1)-alpha-D-mannopyranose-(3-4)-2-acetamido-2-deoxy-beta-D-glucopyranose-(1-4)-2-acetamido-2-deoxy-beta-D-glucopyranose

Chain C:  75% 25%

MAG1
MAG2
MAG3
MAG4

- Molecule 3: 2-acetamido-2-deoxy-beta-D-glucopyranose-(1-4)-2-acetamido-2-deoxy-beta-D-glucopyranose

Chain D:  100%

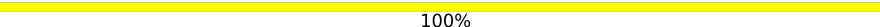
MAG1
MAG2

- Molecule 3: 2-acetamido-2-deoxy-beta-D-glucopyranose-(1-4)-2-acetamido-2-deoxy-beta-D-glucopyranose

Chain G:  100%

MAG1
MAG2

- Molecule 3: 2-acetamido-2-deoxy-beta-D-glucopyranose-(1-4)-2-acetamido-2-deoxy-beta-D-glucopyranose

Chain H:  100%

MAG1
MAG2

- Molecule 3: 2-acetamido-2-deoxy-beta-D-glucopyranose-(1-4)-2-acetamido-2-deoxy-beta-D-glucopyranose

Chain I:  50% 50%

MAG1
MAG2

- Molecule 3: 2-acetamido-2-deoxy-beta-D-glucopyranose-(1-4)-2-acetamido-2-deoxy-beta-D-glucopyranose

Chain J:  50% 50%

MAG1
MAG2

- Molecule 4: 2-acetamido-2-deoxy-beta-D-glucopyranose-(1-3)-alpha-D-mannopyranose

Chain E:  100%

MAN1
MAG2

- Molecule 4: 2-acetamido-2-deoxy-beta-D-glucopyranose-(1-3)-alpha-D-mannopyranose

Chain F:

100%

MAN1
MAG2

4 Data and refinement statistics

Property	Value	Source
Space group	C 2 2 21	Depositor
Cell constants a, b, c, α , β , γ	80.35Å 182.57Å 242.16Å 90.00° 90.00° 90.00°	Depositor
Resolution (Å)	73.54 – 1.81 73.54 – 1.81	Depositor EDS
% Data completeness (in resolution range)	99.9 (73.54-1.81) 99.9 (73.54-1.81)	Depositor EDS
R_{merge}	0.14	Depositor
R_{sym}	(Not available)	Depositor
$\langle I/\sigma(I) \rangle$ ¹	2.18 (at 1.81Å)	Xtrriage
Refinement program	REFMAC 5.8.0135	Depositor
R, R_{free}	0.212 , 0.250 0.219 , 0.254	Depositor DCC
R_{free} test set	7850 reflections (4.86%)	wwPDB-VP
Wilson B-factor (Å ²)	30.7	Xtrriage
Anisotropy	0.037	Xtrriage
Bulk solvent k_{sol} (e/Å ³), B_{sol} (Å ²)	0.34 , 30.0	EDS
L-test for twinning ²	$\langle L \rangle = 0.46$, $\langle L^2 \rangle = 0.29$	Xtrriage
Estimated twinning fraction	No twinning to report.	Xtrriage
F_o, F_c correlation	0.96	EDS
Total number of atoms	12859	wwPDB-VP
Average B, all atoms (Å ²)	35.0	wwPDB-VP

Xtrriage's analysis on translational NCS is as follows: *The analyses of the Patterson function reveals a significant off-origin peak that is 44.96 % of the origin peak, indicating pseudo-translational symmetry. The chance of finding a peak of this or larger height randomly in a structure without pseudo-translational symmetry is equal to 1.4148e-04. The detected translational NCS is most likely also responsible for the elevated intensity ratio.*

¹Intensities estimated from amplitudes.

²Theoretical values of $\langle |L| \rangle$, $\langle L^2 \rangle$ for acentric reflections are 0.5, 0.333 respectively for untwinned datasets, and 0.375, 0.2 for perfectly twinned datasets.

5 Model quality [i](#)

5.1 Standard geometry [i](#)

Bond lengths and bond angles in the following residue types are not validated in this section: BKR, MAN, NAG, XLS

The Z score for a bond length (or angle) is the number of standard deviations the observed value is removed from the expected value. A bond length (or angle) with $|Z| > 5$ is considered an outlier worth inspection. RMSZ is the root-mean-square of all Z scores of the bond lengths (or angles).

Mol	Chain	Bond lengths		Bond angles	
		RMSZ	# Z >5	RMSZ	# Z >5
1	A	1.28	12/5847 (0.2%)	1.19	21/8000 (0.3%)
1	B	1.26	13/5854 (0.2%)	1.22	33/8010 (0.4%)
All	All	1.27	25/11701 (0.2%)	1.20	54/16010 (0.3%)

Chiral center outliers are detected by calculating the chiral volume of a chiral center and verifying if the center is modelled as a planar moiety or with the opposite hand. A planarity outlier is detected by checking planarity of atoms in a peptide group, atoms in a mainchain group or atoms of a sidechain that are expected to be planar.

Mol	Chain	#Chirality outliers	#Planarity outliers
1	B	0	3

The worst 5 of 25 bond length outliers are listed below:

Mol	Chain	Res	Type	Atoms	Z	Observed(Å)	Ideal(Å)
1	B	371	PRO	CA-C	8.34	1.56	1.51
1	A	332	TRP	CA-C	-8.12	1.49	1.53
1	B	260	GLY	N-CA	-7.23	1.34	1.45
1	A	752	VAL	C-O	-7.08	1.16	1.24
1	A	201	GLY	N-CA	6.82	1.55	1.45

The worst 5 of 54 bond angle outliers are listed below:

Mol	Chain	Res	Type	Atoms	Z	Observed(°)	Ideal(°)
1	B	169	THR	CB-CA-C	-10.49	93.14	108.88
1	B	774	ASP	CA-C-N	-9.26	110.38	122.79
1	B	774	ASP	C-N-CA	-9.26	110.38	122.79
1	A	83	THR	N-CA-CB	-8.96	97.47	110.56
1	A	261	THR	CB-CA-C	-8.41	95.77	109.72

There are no chirality outliers.

All (3) planarity outliers are listed below:

Mol	Chain	Res	Type	Group
1	B	201	GLY	Peptide
1	B	259	ALA	Peptide
1	B	683	TYR	Peptide

5.2 Too-close contacts [i](#)

In the following table, the Non-H and H(model) columns list the number of non-hydrogen atoms and hydrogen atoms in the chain respectively. The H(added) column lists the number of hydrogen atoms added and optimized by MolProbity. The Clashes column lists the number of clashes within the asymmetric unit, whereas Symm-Clashes lists symmetry-related clashes.

Mol	Chain	Non-H	H(model)	H(added)	Clashes	Symm-Clashes
1	A	5706	0	5494	50	0
1	B	5713	0	5502	72	0
2	C	53	0	46	3	0
3	D	28	0	25	0	0
3	G	28	0	25	0	0
3	H	28	0	25	0	0
3	I	28	0	25	2	0
3	J	28	0	25	1	0
4	E	25	0	22	3	0
4	F	26	0	24	0	0
5	A	57	0	54	2	0
5	B	28	0	26	2	0
6	A	59	0	0	1	0
6	B	59	0	0	4	0
7	A	10	0	10	2	0
7	B	10	0	10	2	0
8	A	486	0	0	4	0
8	B	487	0	0	9	0
All	All	12859	0	11313	131	0

The all-atom clashscore is defined as the number of clashes found per 1000 atoms (including hydrogen atoms). The all-atom clashscore for this structure is 6.

The worst 5 of 131 close contacts within the same asymmetric unit are listed below, sorted by their clash magnitude.

Atom-1	Atom-2	Interatomic distance (Å)	Clash overlap (Å)
2:C:3:MAN:O4	4:E:1:MAN:C1	2.01	1.09
1:A:521:VAL:HG11	1:A:546:MET:HE3	1.34	1.08
1:A:546:MET:HE2	1:A:546:MET:HA	1.43	1.00
1:B:416:THR:HG21	8:B:1175:HOH:O	1.69	0.92
1:B:235:PRO:O	1:B:270:ARG:HD3	1.75	0.87

There are no symmetry-related clashes.

5.3 Torsion angles [i](#)

5.3.1 Protein backbone [i](#)

In the following table, the Percentiles column shows the percent Ramachandran outliers of the chain as a percentile score with respect to all X-ray entries followed by that with respect to entries of similar resolution.

The Analysed column shows the number of residues for which the backbone conformation was analysed, and the total number of residues.

Mol	Chain	Analysed	Favoured	Allowed	Outliers	Percentiles	
1	A	754/803 (94%)	720 (96%)	34 (4%)	0	100	100
1	B	755/803 (94%)	721 (96%)	32 (4%)	2 (0%)	36	26
All	All	1509/1606 (94%)	1441 (96%)	66 (4%)	2 (0%)	48	38

All (2) Ramachandran outliers are listed below:

Mol	Chain	Res	Type
1	B	48	GLN
1	B	236	ILE

5.3.2 Protein sidechains [i](#)

In the following table, the Percentiles column shows the percent sidechain outliers of the chain as a percentile score with respect to all X-ray entries followed by that with respect to entries of similar resolution.

The Analysed column shows the number of residues for which the sidechain conformation was analysed, and the total number of residues.

Continued on next page...

Continued from previous page...

Mol	Chain	Analysed	Rotameric	Outliers	Percentiles	
1	A	607/648 (94%)	575 (95%)	32 (5%)	20	5
1	B	608/648 (94%)	573 (94%)	35 (6%)	18	4
All	All	1215/1296 (94%)	1148 (94%)	67 (6%)	19	5

5 of 67 residues with a non-rotameric sidechain are listed below:

Mol	Chain	Res	Type
1	B	627	THR
1	B	682	ASP
1	B	776	LEU
1	A	672	LEU
1	A	655	ARG

Sometimes sidechains can be flipped to improve hydrogen bonding and reduce clashes. 5 of 25 such sidechains are listed below:

Mol	Chain	Res	Type
1	B	239	ASN
1	B	273	ASN
1	B	781	ASN
1	B	262	ASN
1	B	313	ASN

5.3.3 RNA [i](#)

There are no RNA molecules in this entry.

5.4 Non-standard residues in protein, DNA, RNA chains [i](#)

There are no non-standard protein/DNA/RNA residues in this entry.

5.5 Carbohydrates [i](#)

18 monosaccharides are modelled in this entry.

In the following table, the Counts columns list the number of bonds (or angles) for which Mogul statistics could be retrieved, the number of bonds (or angles) that are observed in the model and the number of bonds (or angles) that are defined in the Chemical Component Dictionary. The

Link column lists molecule types, if any, to which the group is linked. The Z score for a bond length (or angle) is the number of standard deviations the observed value is removed from the expected value. A bond length (or angle) with $|Z| > 2$ is considered an outlier worth inspection. RMSZ is the root-mean-square of all Z scores of the bond lengths (or angles).

Mol	Type	Chain	Res	Link	Bond lengths			Bond angles		
					Counts	RMSZ	# Z > 2	Counts	RMSZ	# Z > 2
2	NAG	C	1	2,1	14,14,15	0.74	0	17,19,21	1.11	2 (11%)
2	NAG	C	2	2	14,14,15	0.67	0	17,19,21	1.77	4 (23%)
2	MAN	C	3	2	11,11,12	1.27	1 (9%)	14,15,17	3.01	9 (64%)
2	NAG	C	4	2	14,14,15	1.18	1 (7%)	17,19,21	2.84	7 (41%)
3	NAG	D	1	3,1	14,14,15	1.04	1 (7%)	17,19,21	1.27	3 (17%)
3	NAG	D	2	3	14,14,15	1.28	1 (7%)	17,19,21	1.70	4 (23%)
4	MAN	E	1	4	11,11,12	0.68	0	15,15,17	1.48	2 (13%)
4	NAG	E	2	4	14,14,15	0.81	0	17,19,21	2.42	6 (35%)
4	MAN	F	1	4	12,12,12	1.22	1 (8%)	17,17,17	1.86	4 (23%)
4	NAG	F	2	4	14,14,15	1.37	2 (14%)	17,19,21	3.03	9 (52%)
3	NAG	G	1	3,1	14,14,15	0.66	0	17,19,21	1.18	1 (5%)
3	NAG	G	2	3	14,14,15	1.11	1 (7%)	17,19,21	1.24	2 (11%)
3	NAG	H	1	3,1	14,14,15	0.94	0	17,19,21	1.47	4 (23%)
3	NAG	H	2	3	14,14,15	1.01	0	17,19,21	1.17	2 (11%)
3	NAG	I	1	3,1	14,14,15	0.93	0	17,19,21	1.83	3 (17%)
3	NAG	I	2	3	14,14,15	1.00	0	17,19,21	2.27	6 (35%)
3	NAG	J	1	3,1	14,14,15	0.81	0	17,19,21	1.60	4 (23%)
3	NAG	J	2	3	14,14,15	0.81	0	17,19,21	1.38	2 (11%)

In the following table, the Chirals column lists the number of chiral outliers, the number of chiral centers analysed, the number of these observed in the model and the number defined in the Chemical Component Dictionary. Similar counts are reported in the Torsion and Rings columns. '-' means no outliers of that kind were identified.

Mol	Type	Chain	Res	Link	Chirals	Torsions	Rings
2	NAG	C	1	2,1	-	0/6/23/26	0/1/1/1
2	NAG	C	2	2	-	0/6/23/26	0/1/1/1
2	MAN	C	3	2	-	1/2/18/22	0/1/1/1
2	NAG	C	4	2	-	2/6/23/26	0/1/1/1
3	NAG	D	1	3,1	-	0/6/23/26	0/1/1/1
3	NAG	D	2	3	-	0/6/23/26	0/1/1/1
4	MAN	E	1	4	-	2/2/19/22	0/1/1/1
4	NAG	E	2	4	-	2/6/23/26	0/1/1/1

Continued on next page...

Continued from previous page...

Mol	Type	Chain	Res	Link	Chirals	Torsions	Rings
4	MAN	F	1	4	-	0/2/22/22	0/1/1/1
4	NAG	F	2	4	-	3/6/23/26	0/1/1/1
3	NAG	G	1	3,1	-	0/6/23/26	0/1/1/1
3	NAG	G	2	3	-	0/6/23/26	0/1/1/1
3	NAG	H	1	3,1	-	0/6/23/26	0/1/1/1
3	NAG	H	2	3	-	2/6/23/26	0/1/1/1
3	NAG	I	1	3,1	-	0/6/23/26	0/1/1/1
3	NAG	I	2	3	-	0/6/23/26	0/1/1/1
3	NAG	J	1	3,1	-	0/6/23/26	0/1/1/1
3	NAG	J	2	3	-	1/6/23/26	0/1/1/1

The worst 5 of 8 bond length outliers are listed below:

Mol	Chain	Res	Type	Atoms	Z	Observed(Å)	Ideal(Å)
4	F	2	NAG	C1-C2	3.62	1.57	1.52
4	F	1	MAN	O1-C1	2.97	1.48	1.39
3	D	2	NAG	C4-C5	2.63	1.58	1.53
3	D	1	NAG	C2-N2	-2.56	1.42	1.46
4	F	2	NAG	C2-N2	2.55	1.50	1.46

The worst 5 of 74 bond angle outliers are listed below:

Mol	Chain	Res	Type	Atoms	Z	Observed(°)	Ideal(°)
2	C	4	NAG	O5-C1-C2	7.37	122.69	111.29
4	E	2	NAG	C1-O5-C5	7.09	121.69	112.19
4	F	2	NAG	C1-O5-C5	6.34	120.68	112.19
2	C	3	MAN	O5-C5-C4	5.36	117.41	110.10
4	F	2	NAG	C2-N2-C7	5.04	129.65	122.90

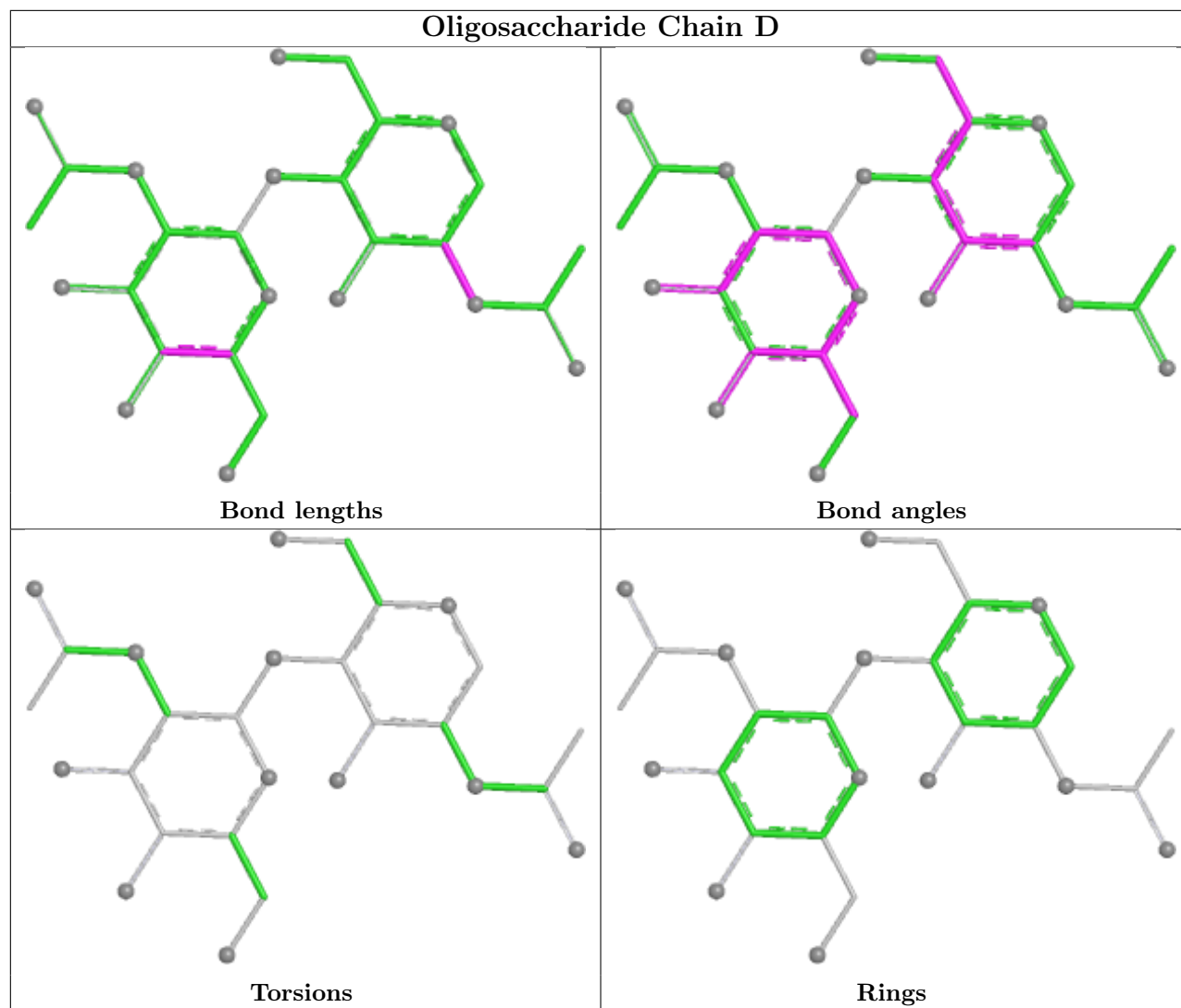
There are no chirality outliers.

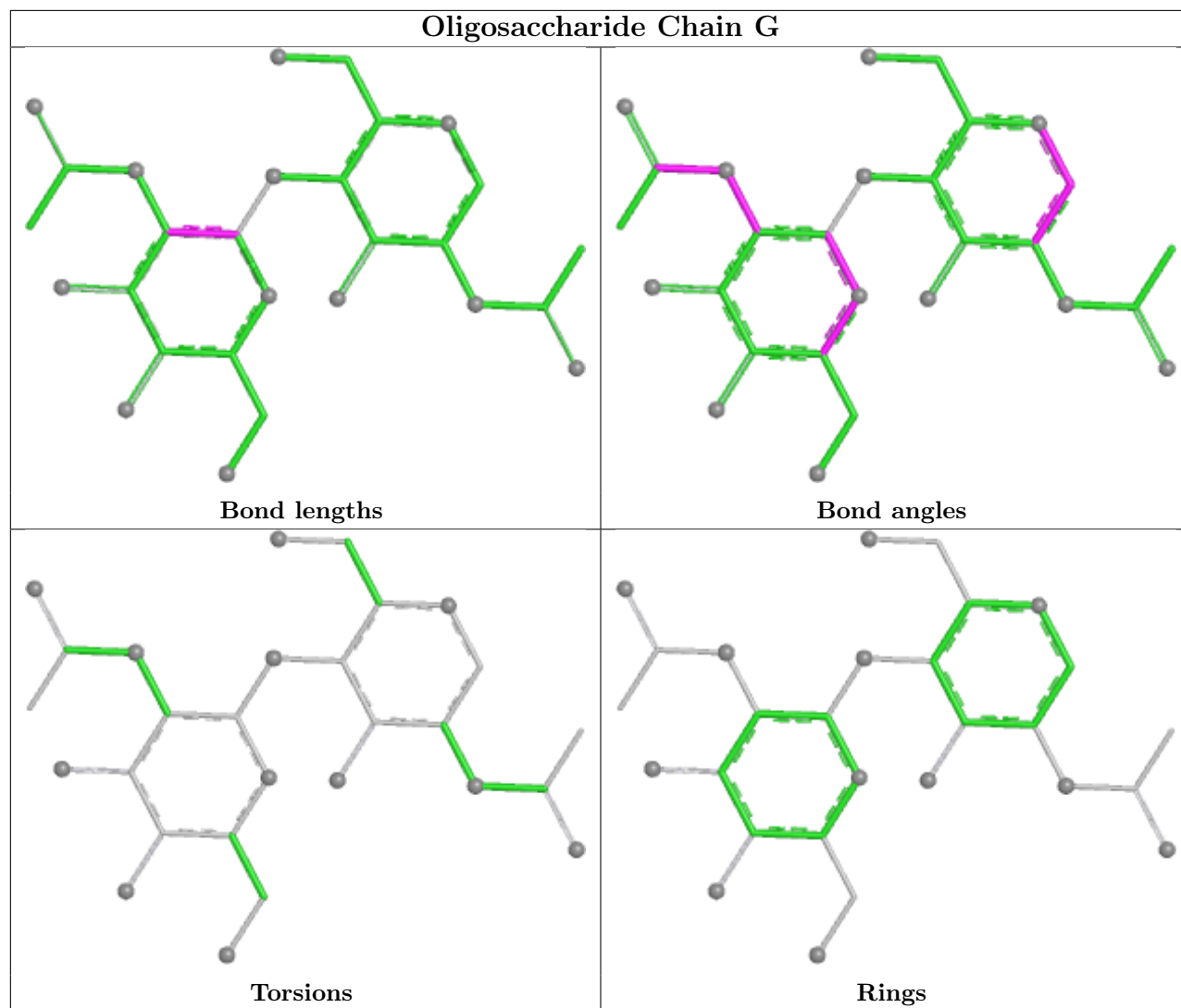
5 of 13 torsion outliers are listed below:

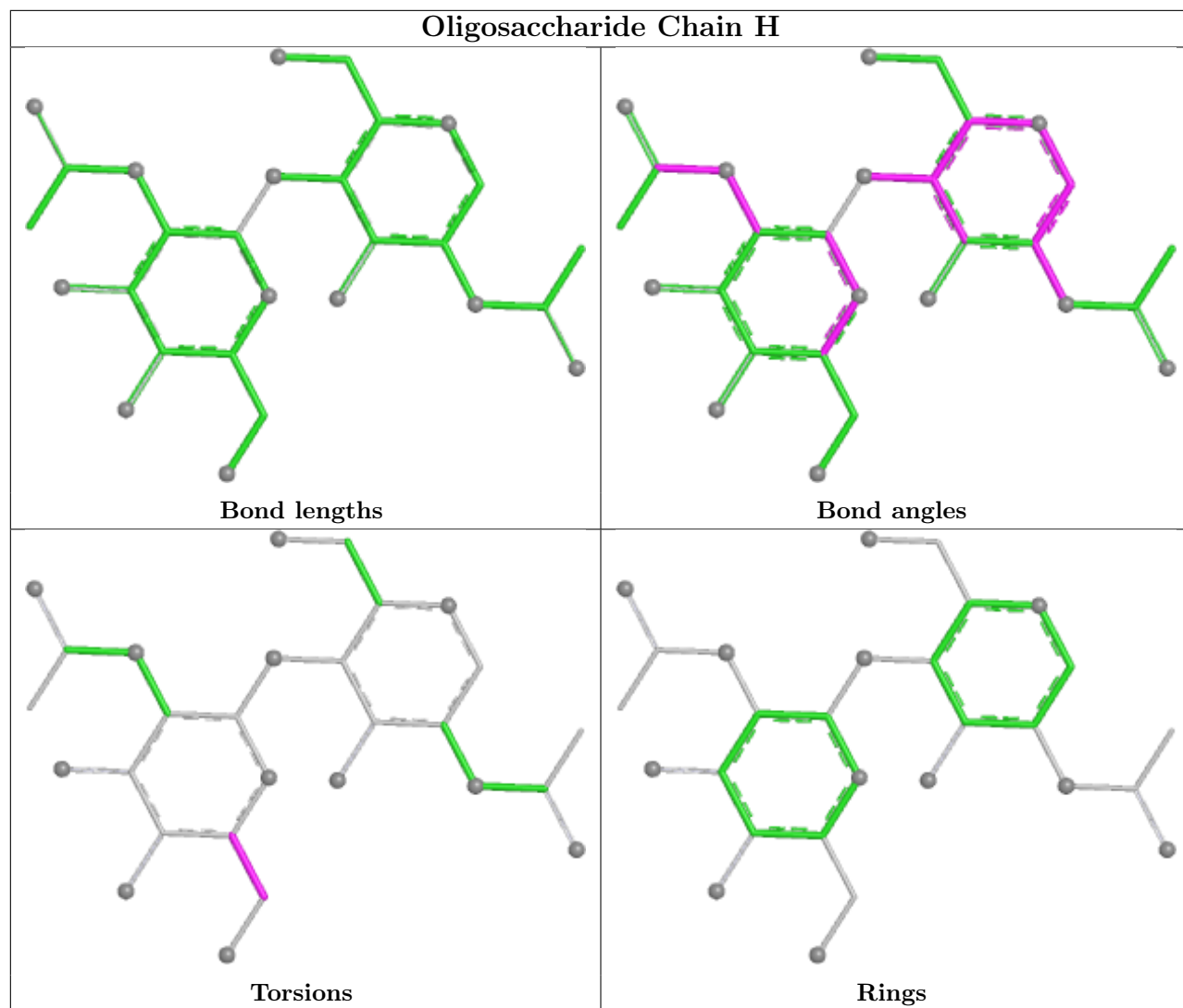
Mol	Chain	Res	Type	Atoms
4	F	2	NAG	C3-C2-N2-C7
4	E	1	MAN	C4-C5-C6-O6
4	E	2	NAG	O5-C5-C6-O6
4	E	2	NAG	C4-C5-C6-O6
4	F	2	NAG	C4-C5-C6-O6

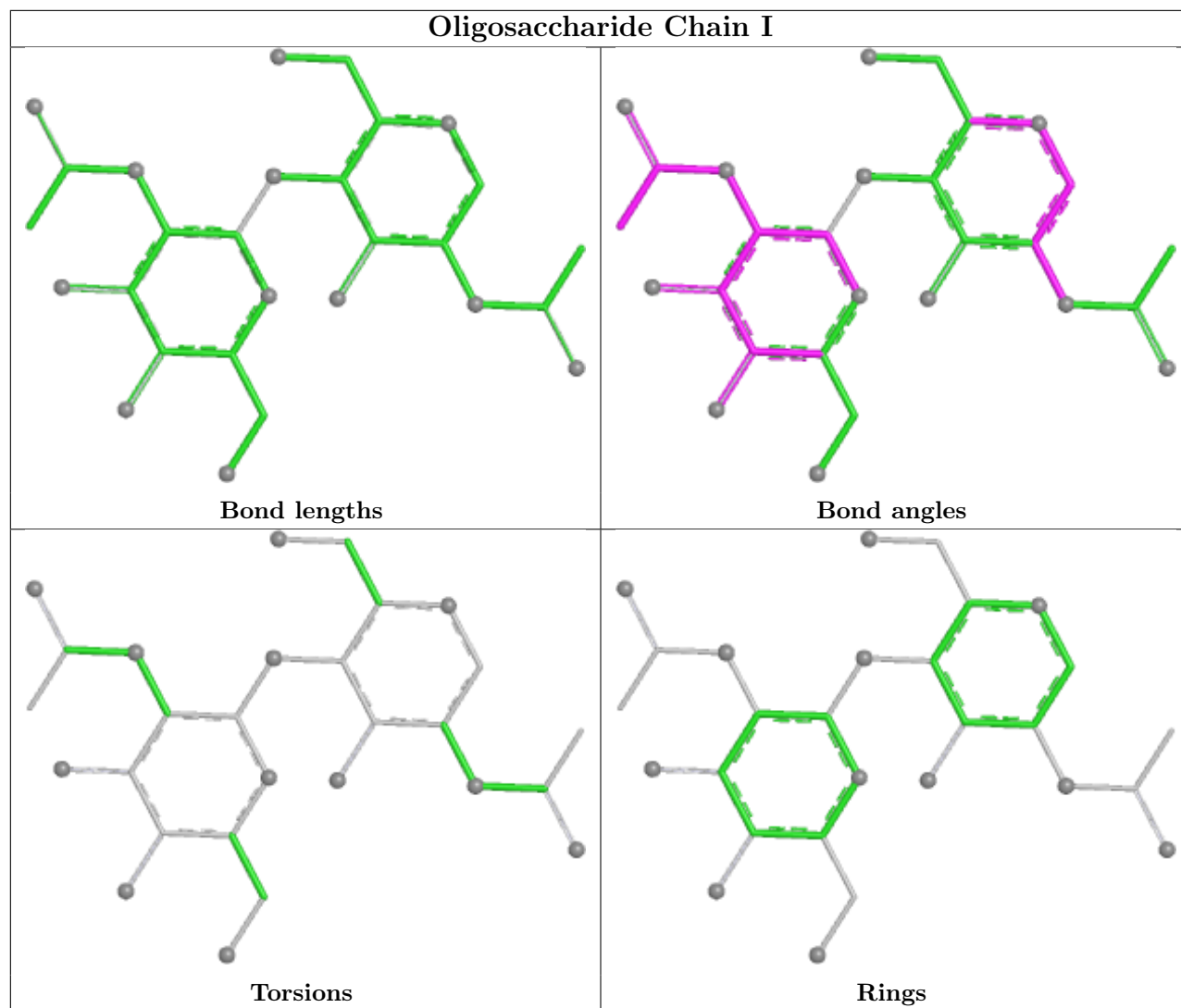
There are no ring outliers.

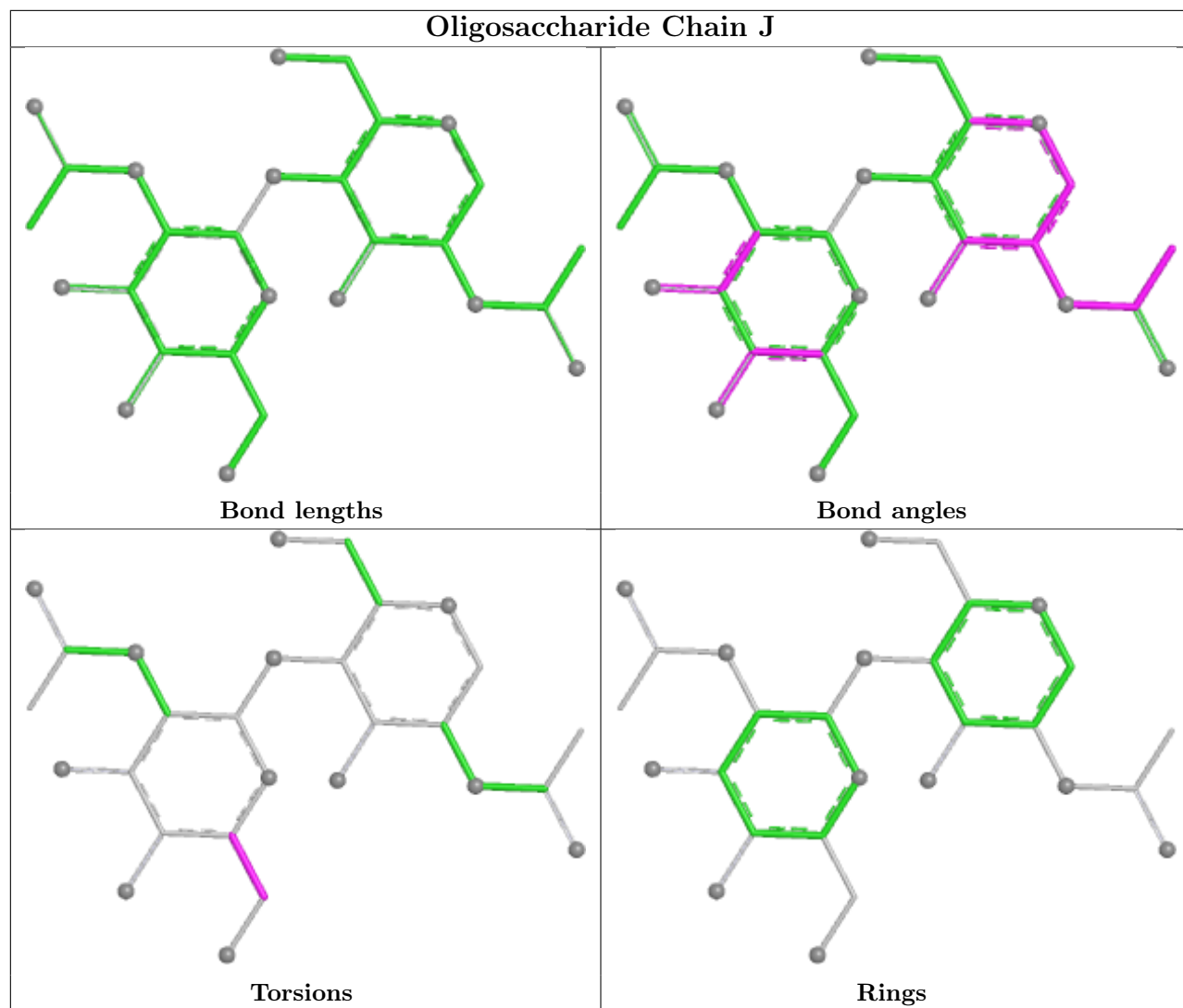
5 monomers are involved in 7 short contacts:

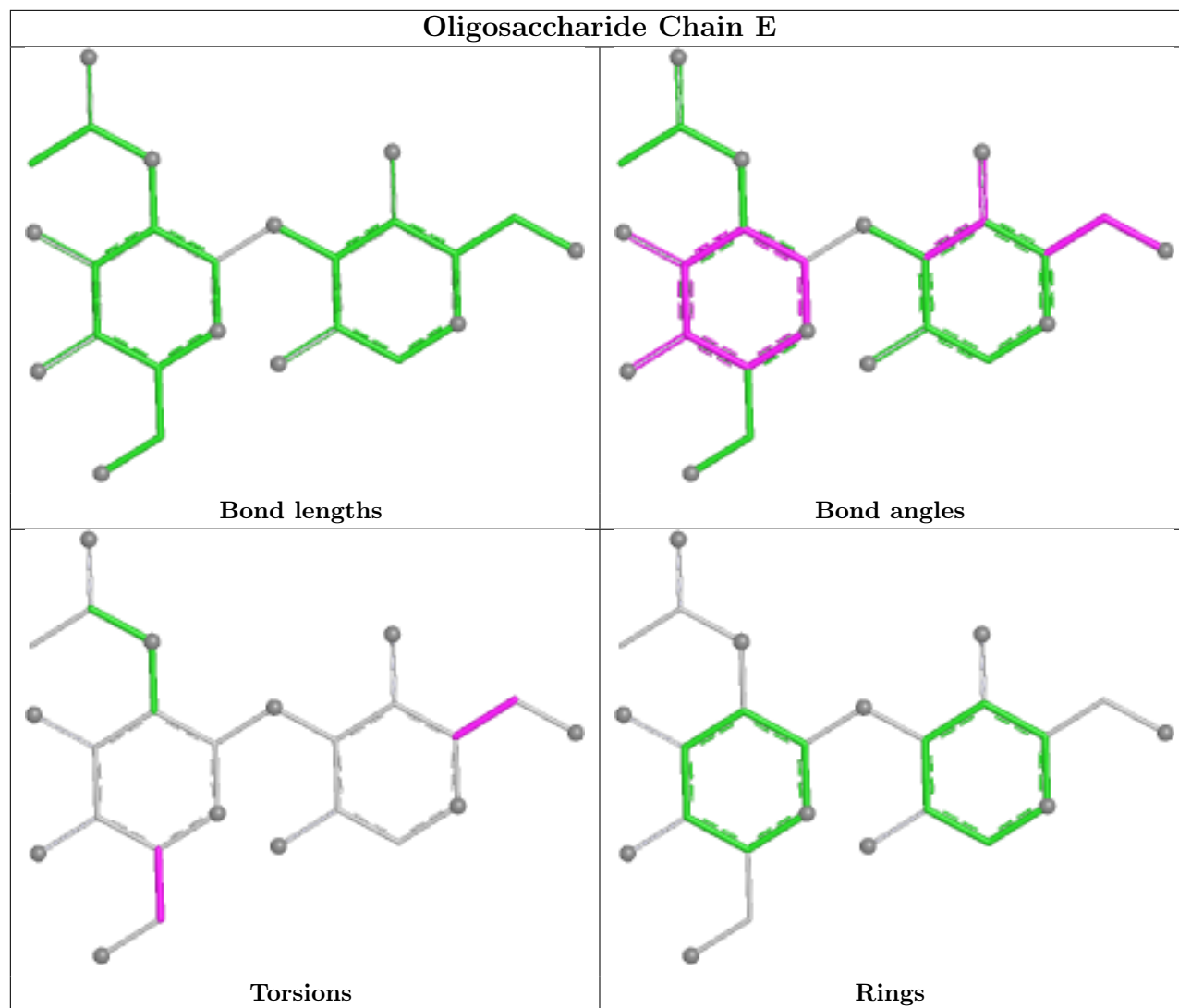


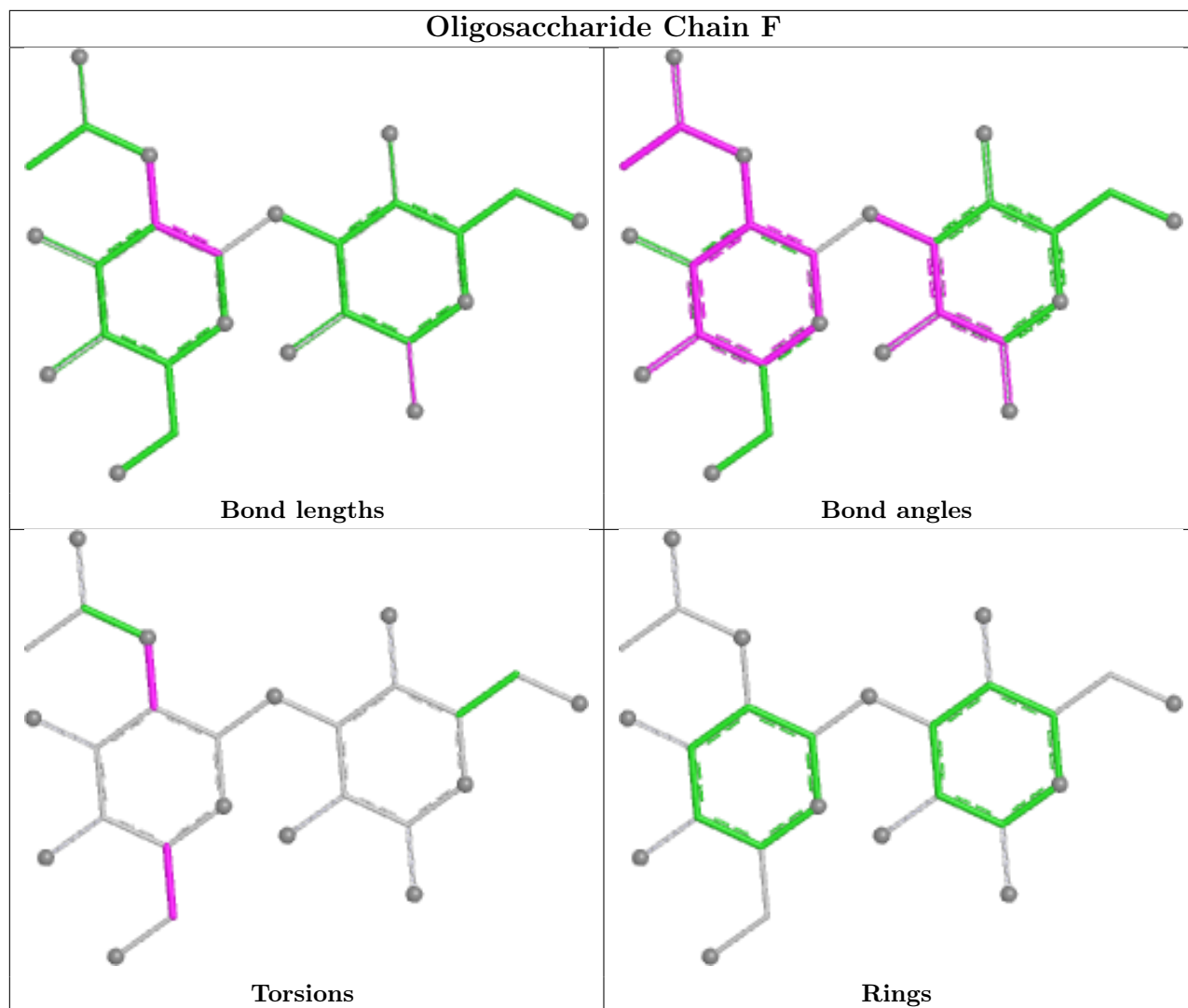












5.6 Ligand geometry [i](#)

10 ligands are modelled in this entry.

In the following table, the Counts columns list the number of bonds (or angles) for which Mogul statistics could be retrieved, the number of bonds (or angles) that are observed in the model and the number of bonds (or angles) that are defined in the Chemical Component Dictionary. The Link column lists molecule types, if any, to which the group is linked. The Z score for a bond length (or angle) is the number of standard deviations the observed value is removed from the expected value. A bond length (or angle) with $|Z| > 2$ is considered an outlier worth inspection. RMSZ is the root-mean-square of all Z scores of the bond lengths (or angles).

Mol	Type	Chain	Res	Link	Bond lengths			Bond angles		
					Counts	RMSZ	$\# Z > 2$	Counts	RMSZ	$\# Z > 2$
6	BKR	B	903	-	65,65,65	1.38	4 (6%)	101,101,101	1.40	15 (14%)
5	NAG	A	901	-	14,14,15	0.92	0	19,19,21	1.28	1 (5%)
7	XLS	B	904	-	8,9,9	0.76	0	10,11,11	2.17	6 (60%)

Mol	Type	Chain	Res	Link	Bond lengths			Bond angles		
					Counts	RMSZ	# Z > 2	Counts	RMSZ	# Z > 2
5	NAG	B	902	1	14,14,15	0.64	0	17,19,21	1.49	3 (17%)
5	NAG	A	906	1	14,14,15	0.79	0	17,19,21	1.07	1 (5%)
6	BKR	A	903	-	65,65,65	1.24	4 (6%)	101,101,101	1.42	16 (15%)
7	XLS	A	904	-	8,9,9	0.77	0	10,11,11	2.57	6 (60%)
5	NAG	A	905	-	15,15,15	1.22	2 (13%)	21,21,21	3.66	12 (57%)
5	NAG	B	901	-	14,14,15	1.03	1 (7%)	19,19,21	1.20	1 (5%)
5	NAG	A	902	1	14,14,15	0.76	0	17,19,21	1.94	4 (23%)

In the following table, the Chirals column lists the number of chiral outliers, the number of chiral centers analysed, the number of these observed in the model and the number defined in the Chemical Component Dictionary. Similar counts are reported in the Torsion and Rings columns. '-' means no outliers of that kind were identified.

Mol	Type	Chain	Res	Link	Chirals	Torsions	Rings
6	BKR	B	903	-	-	3/37/123/123	0/7/7/7
5	NAG	A	901	-	-	2/6/22/26	0/1/1/1
7	XLS	B	904	-	-	5/11/12/12	-
5	NAG	B	902	1	-	0/6/23/26	0/1/1/1
5	NAG	A	906	1	-	1/6/23/26	0/1/1/1
6	BKR	A	903	-	-	3/37/123/123	0/7/7/7
7	XLS	A	904	-	-	4/11/12/12	-
5	NAG	A	905	-	-	5/6/26/26	0/1/1/1
5	NAG	B	901	-	-	1/6/22/26	0/1/1/1
5	NAG	A	902	1	-	0/6/23/26	0/1/1/1

The worst 5 of 11 bond length outliers are listed below:

Mol	Chain	Res	Type	Atoms	Z	Observed(Å)	Ideal(Å)
6	B	903	BKR	O2-C3	5.52	1.45	1.34
6	A	903	BKR	O2-C3	5.40	1.45	1.34
6	B	903	BKR	O11-C27	5.30	1.46	1.34
6	A	903	BKR	O11-C27	3.47	1.42	1.34
6	B	903	BKR	O4-C12	3.31	1.42	1.35

The worst 5 of 65 bond angle outliers are listed below:

Mol	Chain	Res	Type	Atoms	Z	Observed(°)	Ideal(°)
5	A	905	NAG	C8-C7-N2	8.72	130.58	116.12
5	A	905	NAG	C1-O5-C5	5.64	124.56	113.65

Continued on next page...

Continued from previous page...

Mol	Chain	Res	Type	Atoms	Z	Observed(°)	Ideal(°)
5	A	905	NAG	C2-N2-C7	5.52	136.04	123.11
5	A	905	NAG	O7-C7-C8	-5.46	112.33	122.05
5	A	905	NAG	O5-C1-C2	5.43	114.97	109.52

There are no chirality outliers.

5 of 24 torsion outliers are listed below:

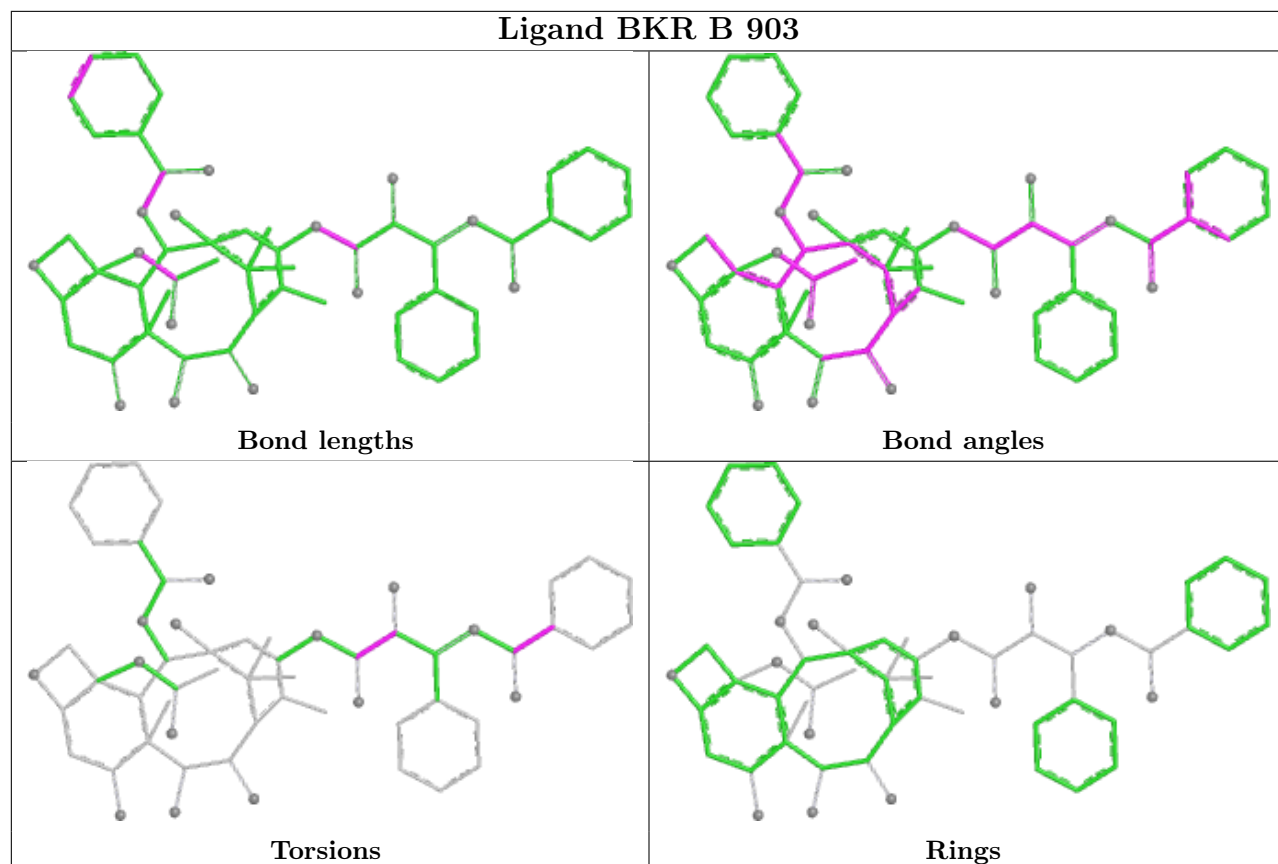
Mol	Chain	Res	Type	Atoms
5	A	905	NAG	C8-C7-N2-C2
5	A	905	NAG	O7-C7-N2-C2
7	A	904	XLS	O1-C1-C2-C3
7	A	904	XLS	C2-C3-C4-C5
7	B	904	XLS	O1-C1-C2-C3

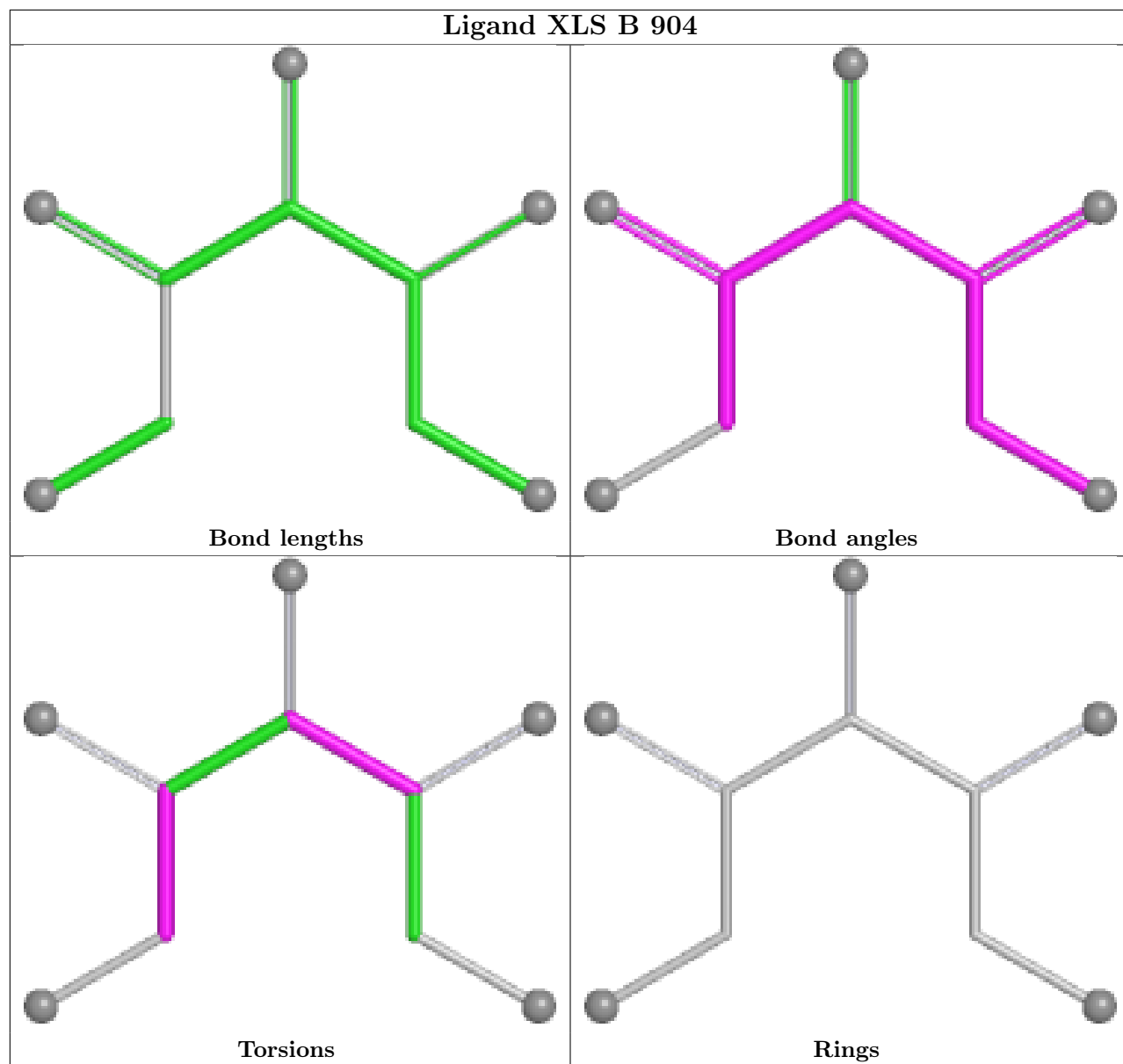
There are no ring outliers.

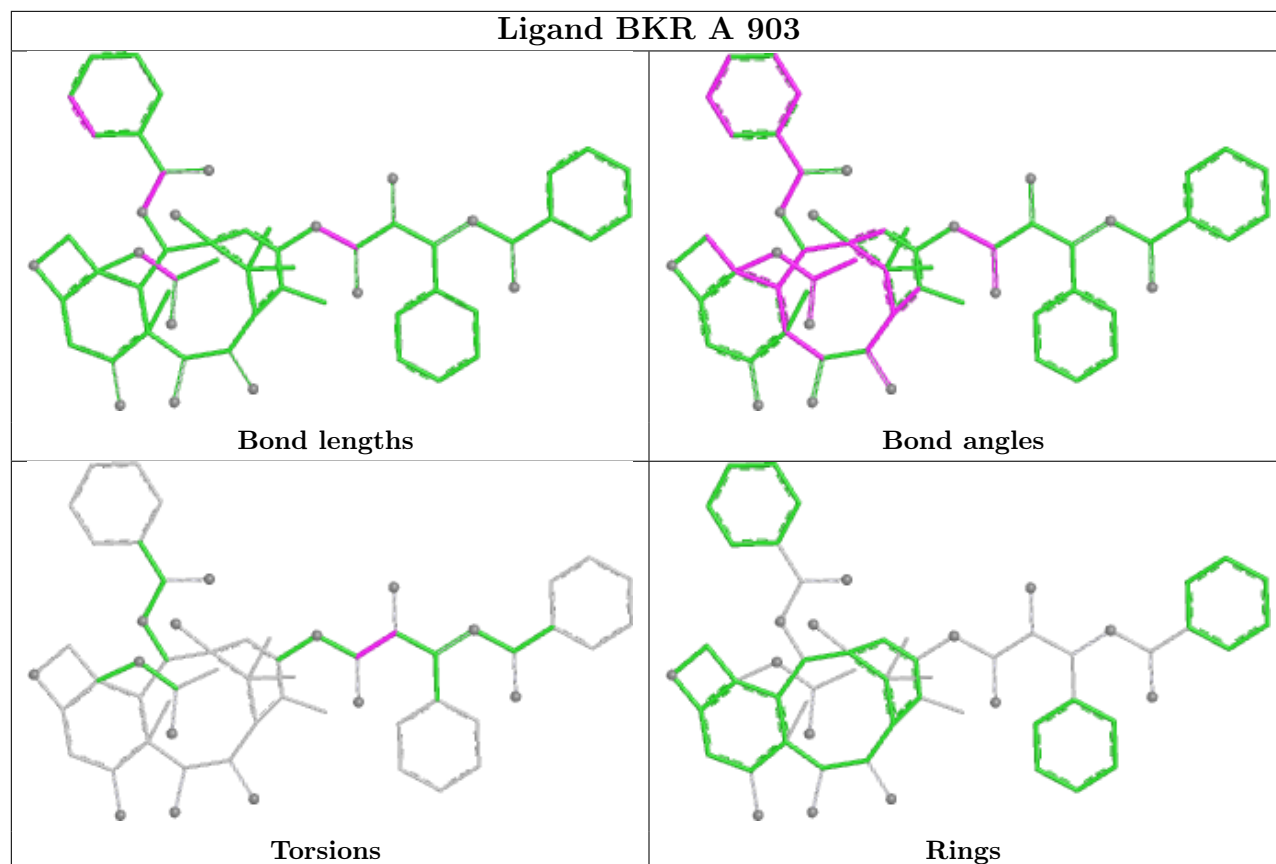
6 monomers are involved in 13 short contacts:

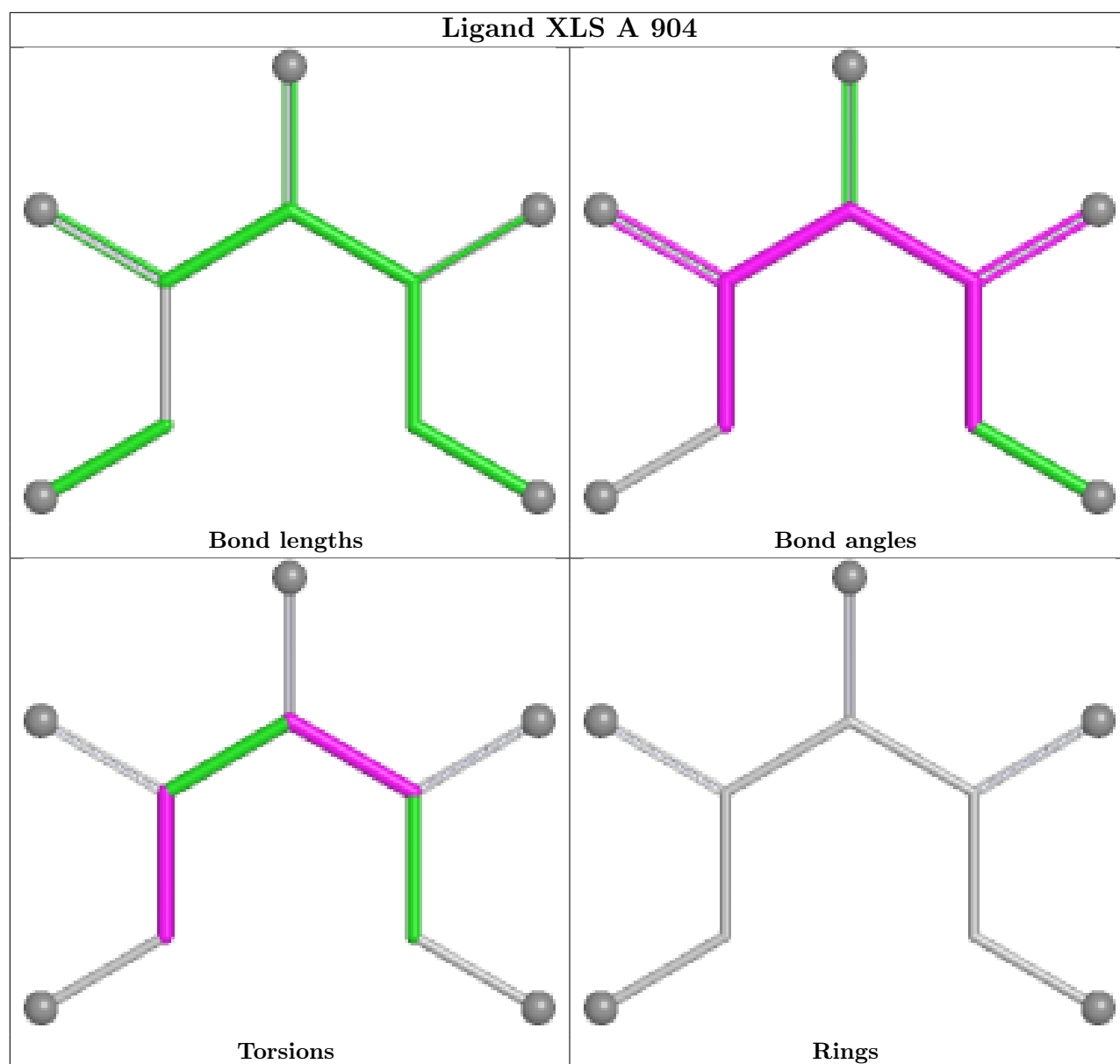
Mol	Chain	Res	Type	Clashes	Symm-Clashes
6	B	903	BKR	4	0
5	A	901	NAG	2	0
7	B	904	XLS	2	0
6	A	903	BKR	1	0
7	A	904	XLS	2	0
5	B	901	NAG	2	0

The following is a two-dimensional graphical depiction of Mogul quality analysis of bond lengths, bond angles, torsion angles, and ring geometry for all instances of the Ligand of Interest. In addition, ligands with molecular weight > 250 and outliers as shown on the validation Tables will also be included. For torsion angles, if less than 5% of the Mogul distribution of torsion angles is within 10 degrees of the torsion angle in question, then that torsion angle is considered an outlier. Any bond that is central to one or more torsion angles identified as an outlier by Mogul will be highlighted in the graph. For rings, the root-mean-square deviation (RMSD) between the ring in question and similar rings identified by Mogul is calculated over all ring torsion angles. If the average RMSD is greater than 60 degrees and the minimal RMSD between the ring in question and any Mogul-identified rings is also greater than 60 degrees, then that ring is considered an outlier. The outliers are highlighted in purple. The color gray indicates Mogul did not find sufficient equivalents in the CSD to analyse the geometry.









5.7 Other polymers [i](#)

There are no such residues in this entry.

5.8 Polymer linkage issues [i](#)

There are no chain breaks in this entry.

6 Fit of model and data [i](#)

6.1 Protein, DNA and RNA chains [i](#)

In the following table, the column labelled '#RSRZ > 2' contains the number (and percentage) of RSRZ outliers, followed by percent RSRZ outliers for the chain as percentile scores relative to all X-ray entries and entries of similar resolution. The OWAB column contains the minimum, median, 95th percentile and maximum values of the occupancy-weighted average B-factor per residue. The column labelled 'Q < 0.9' lists the number of (and percentage) of residues with an average occupancy less than 0.9.

Mol	Chain	Analysed	<RSRZ>	#RSRZ>2	OWAB(Å ²)	Q<0.9
1	A	756/803 (94%)	0.29	11 (1%) 72 78	21, 33, 47, 75	0
1	B	757/803 (94%)	0.38	15 (1%) 65 71	24, 34, 48, 75	0
All	All	1513/1606 (94%)	0.33	26 (1%) 69 75	21, 33, 47, 75	0

The worst 5 of 26 RSRZ outliers are listed below:

Mol	Chain	Res	Type	RSRZ
1	B	683	TYR	3.5
1	B	49	TRP	3.5
1	A	683	TYR	3.3
1	B	699	THR	3.3
1	B	51	ALA	2.8

6.2 Non-standard residues in protein, DNA, RNA chains [i](#)

There are no non-standard protein/DNA/RNA residues in this entry.

6.3 Carbohydrates [i](#)

In the following table, the Atoms column lists the number of modelled atoms in the group and the number defined in the chemical component dictionary. The B-factors column lists the minimum, median, 95th percentile and maximum values of B factors of atoms in the group. The column labelled 'Q < 0.9' lists the number of atoms with occupancy less than 0.9.

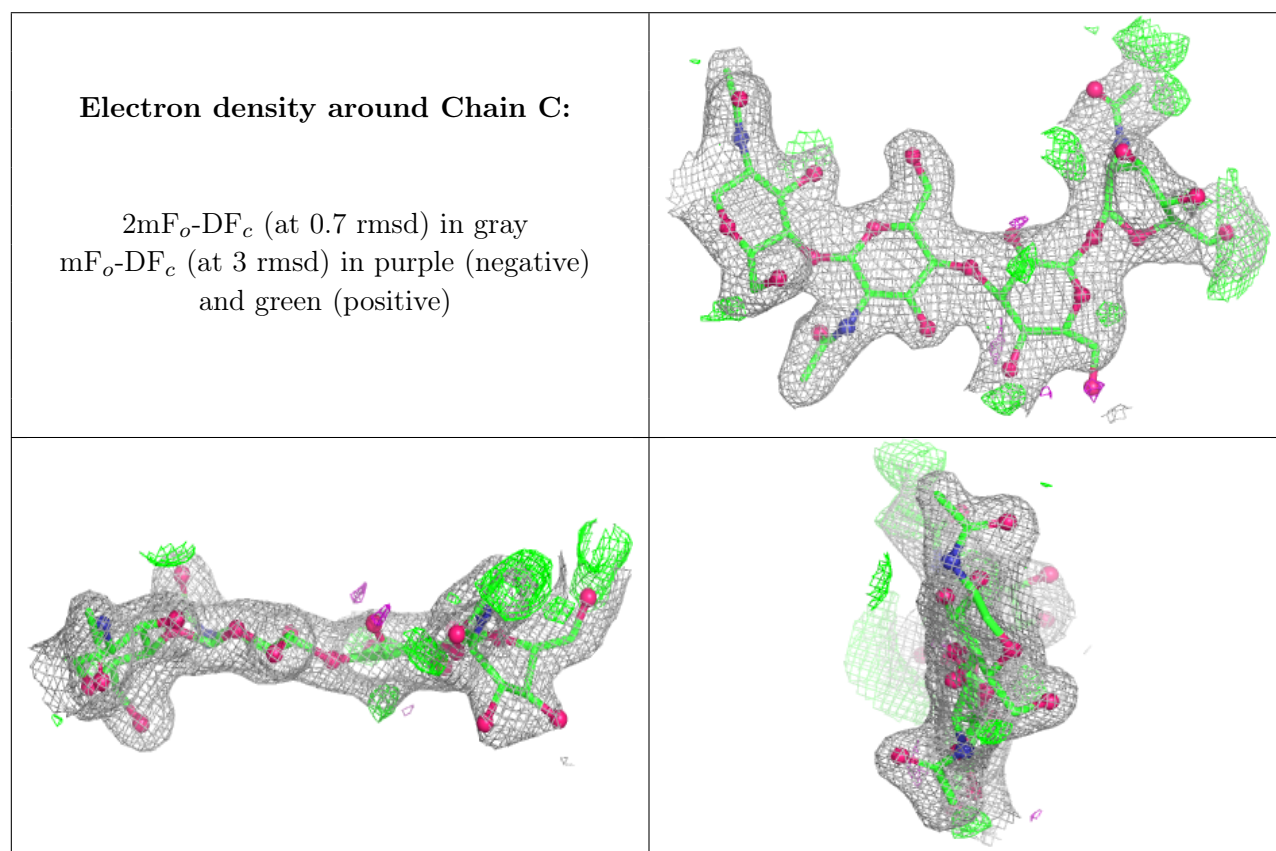
Mol	Type	Chain	Res	Atoms	RSCC	RSR	B-factors(Å ²)	Q<0.9
2	NAG	C	4	14/15	0.54	0.20	51,61,67,80	0
4	NAG	F	2	14/15	0.76	0.17	43,54,59,61	0
3	NAG	I	2	14/15	0.82	0.13	42,51,61,64	0
4	NAG	E	2	14/15	0.83	0.16	51,64,82,85	0
4	MAN	E	1	11/12	0.83	0.11	43,50,55,55	0

Continued on next page...

Continued from previous page...

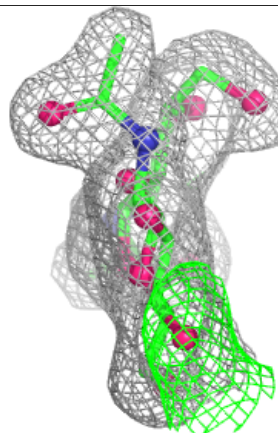
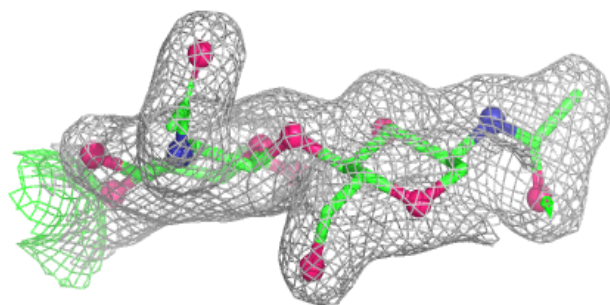
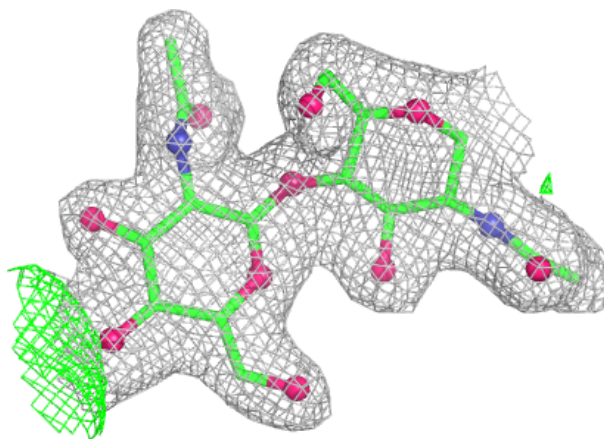
Mol	Type	Chain	Res	Atoms	RSCC	RSR	B-factors(\AA^2)	Q<0.9
3	NAG	J	2	14/15	0.85	0.12	45,52,58,59	0
3	NAG	D	2	14/15	0.87	0.10	33,37,41,44	0
2	MAN	C	3	11/12	0.87	0.16	40,45,62,70	0
4	MAN	F	1	12/12	0.88	0.10	40,43,47,48	0
3	NAG	G	2	14/15	0.88	0.10	33,41,48,50	0
3	NAG	H	2	14/15	0.91	0.09	36,38,48,54	0
2	NAG	C	1	14/15	0.92	0.09	35,39,42,42	0
3	NAG	J	1	14/15	0.94	0.08	34,35,39,40	0
2	NAG	C	2	14/15	0.94	0.08	34,38,43,47	0
3	NAG	I	1	14/15	0.95	0.07	33,35,37,39	0
3	NAG	D	1	14/15	0.95	0.07	32,37,43,46	0
3	NAG	H	1	14/15	0.95	0.08	30,32,35,38	0
3	NAG	G	1	14/15	0.95	0.07	27,30,34,38	0

The following is a graphical depiction of the model fit to experimental electron density for oligosaccharide. Each fit is shown from different orientation to approximate a three-dimensional view.



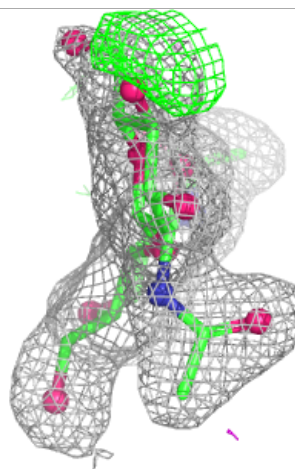
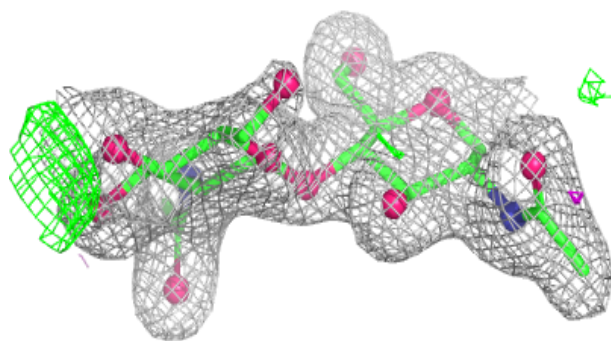
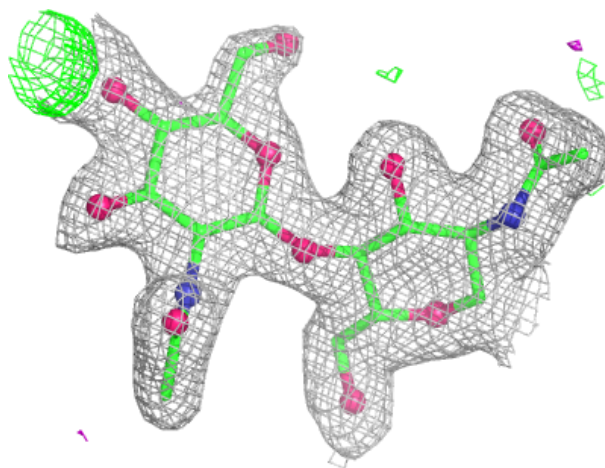
Electron density around Chain D:

$2mF_o-DF_c$ (at 0.7 rmsd) in gray
 mF_o-DF_c (at 3 rmsd) in purple (negative)
and green (positive)



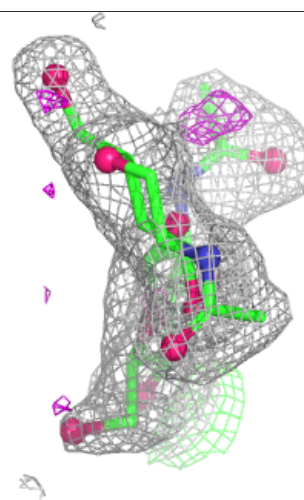
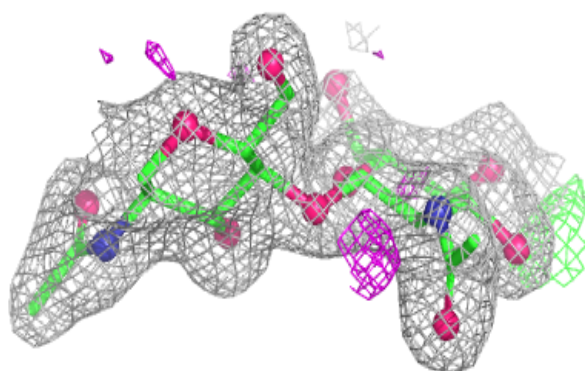
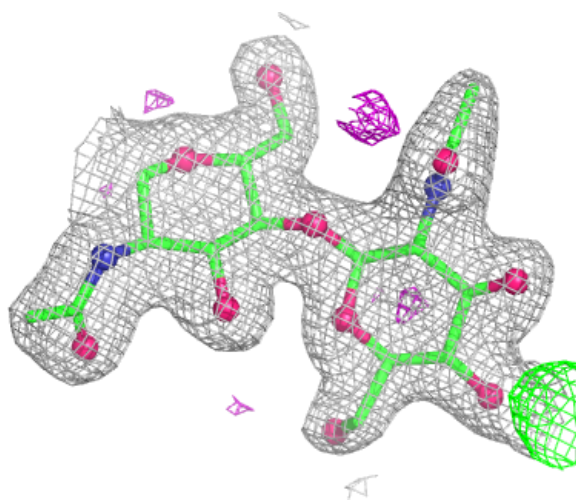
Electron density around Chain G:

$2mF_o-DF_c$ (at 0.7 rmsd) in gray
 mF_o-DF_c (at 3 rmsd) in purple (negative)
and green (positive)



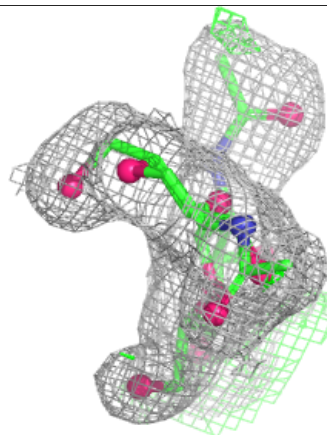
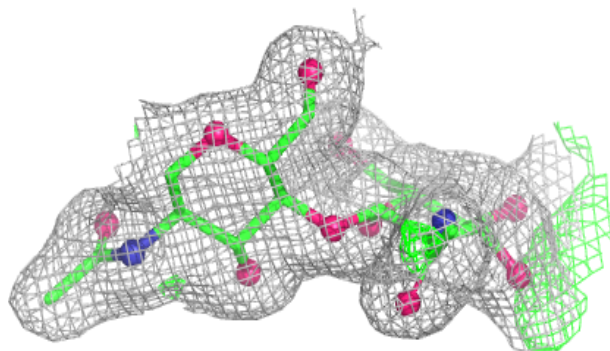
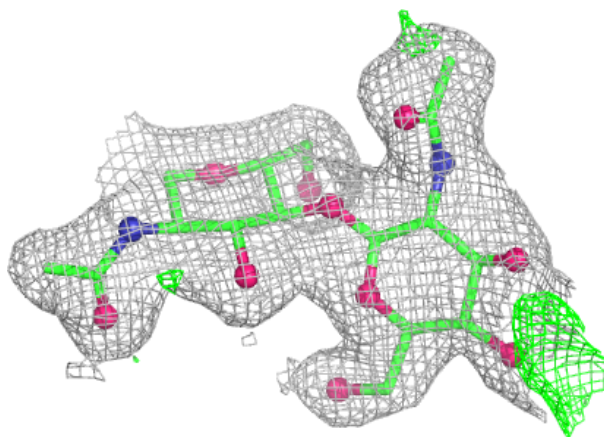
Electron density around Chain H:

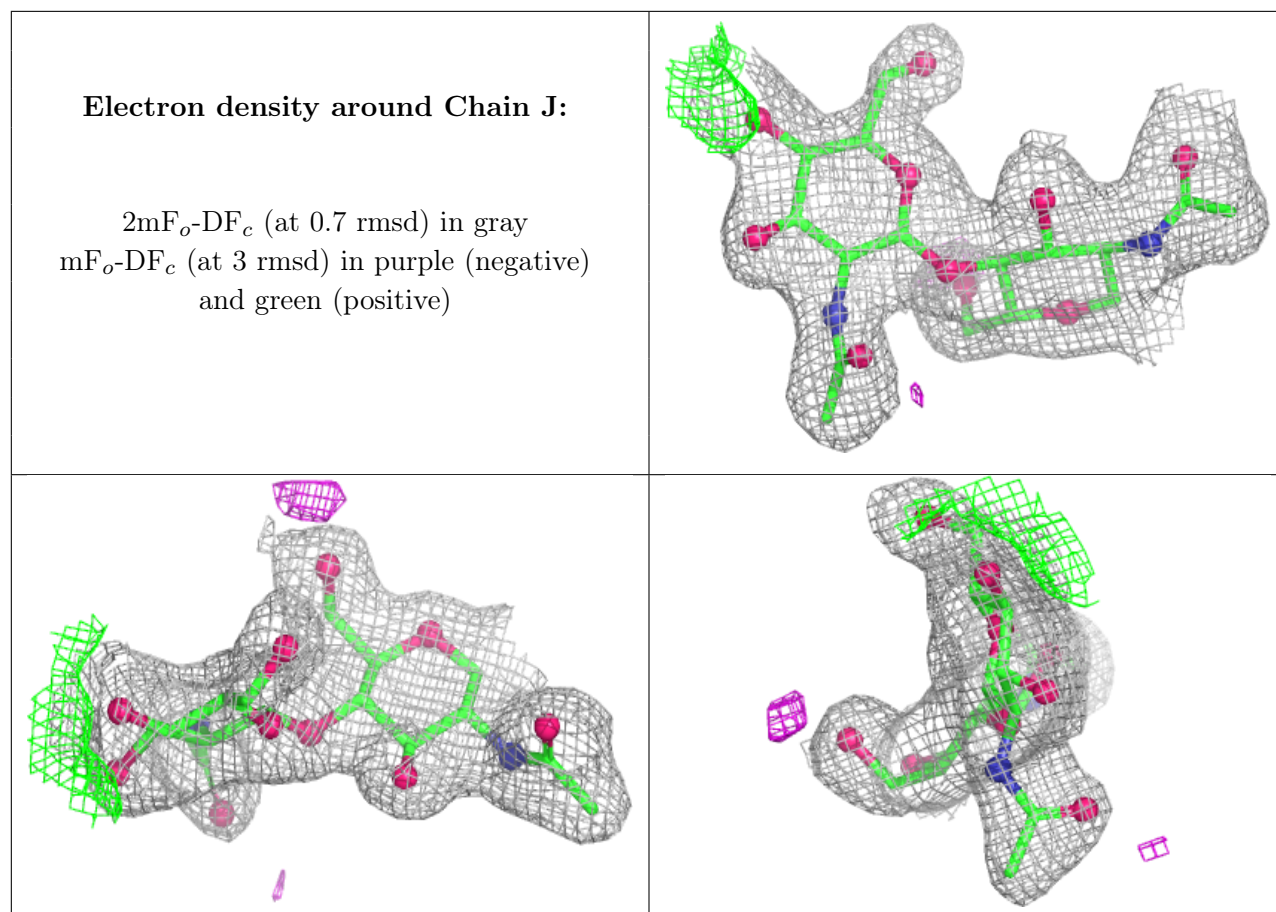
$2mF_o-DF_c$ (at 0.7 rmsd) in gray
 mF_o-DF_c (at 3 rmsd) in purple (negative)
and green (positive)



Electron density around Chain I:

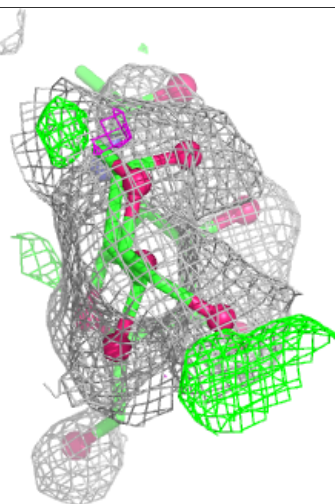
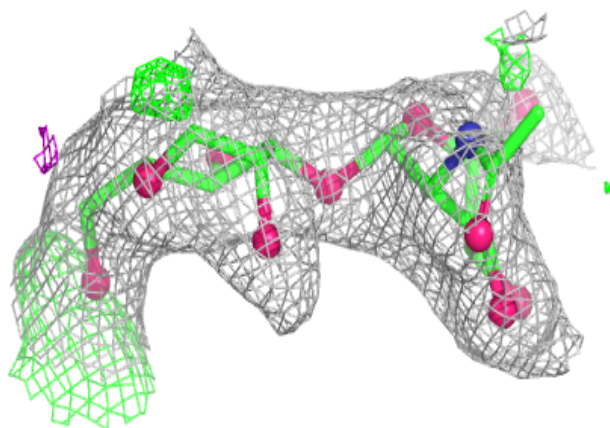
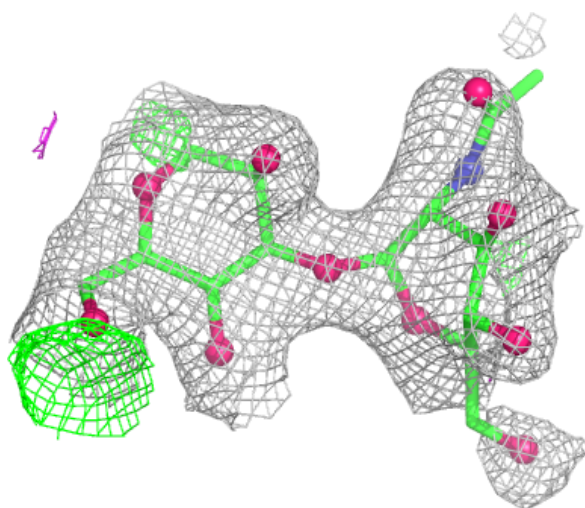
$2mF_o-DF_c$ (at 0.7 rmsd) in gray
 mF_o-DF_c (at 3 rmsd) in purple (negative)
and green (positive)

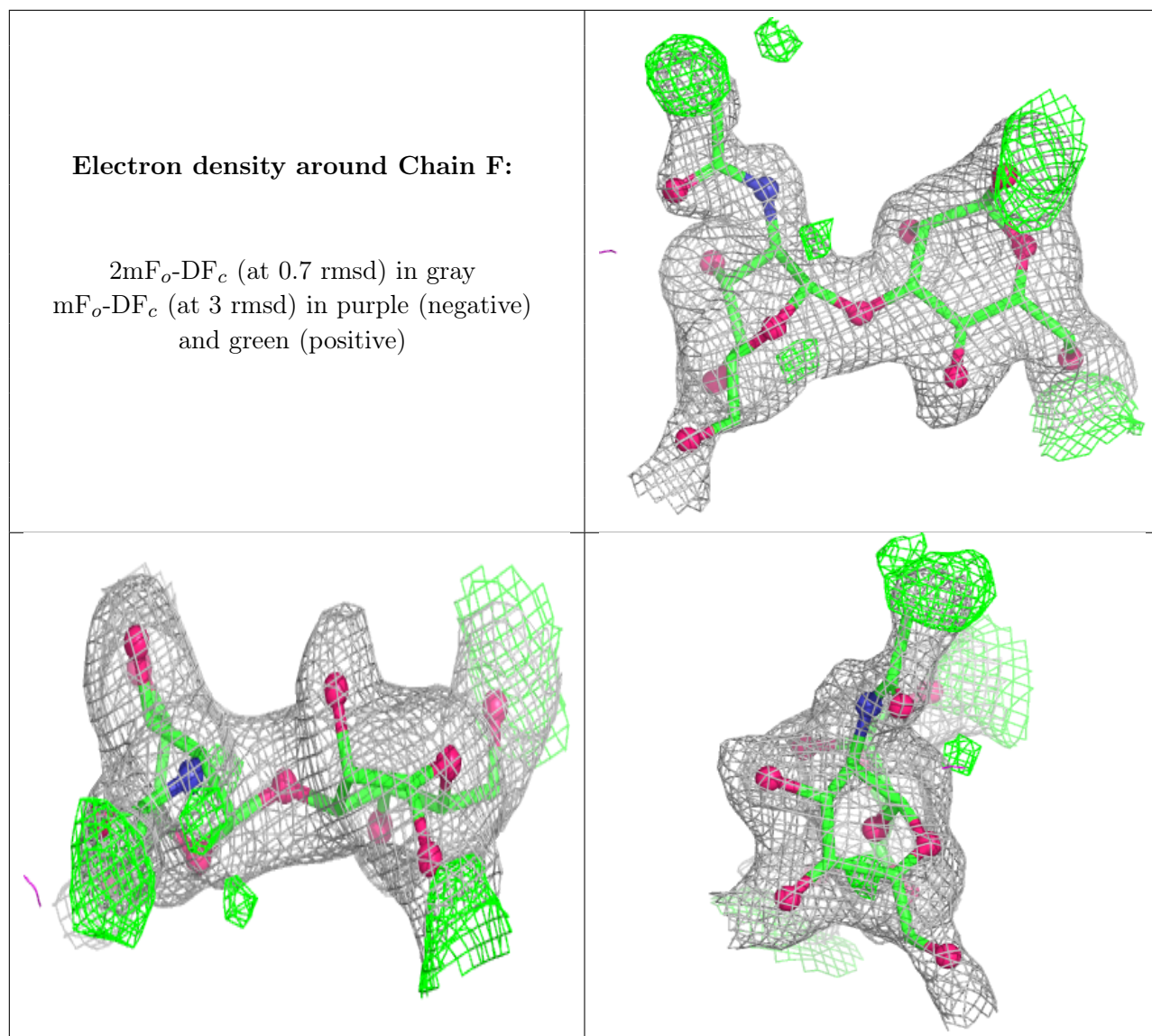




Electron density around Chain E:

$2mF_o-DF_c$ (at 0.7 rmsd) in gray
 mF_o-DF_c (at 3 rmsd) in purple (negative)
and green (positive)





6.4 Ligands [i](#)

In the following table, the Atoms column lists the number of modelled atoms in the group and the number defined in the chemical component dictionary. The B-factors column lists the minimum, median, 95th percentile and maximum values of B factors of atoms in the group. The column labelled 'Q < 0.9' lists the number of atoms with occupancy less than 0.9.

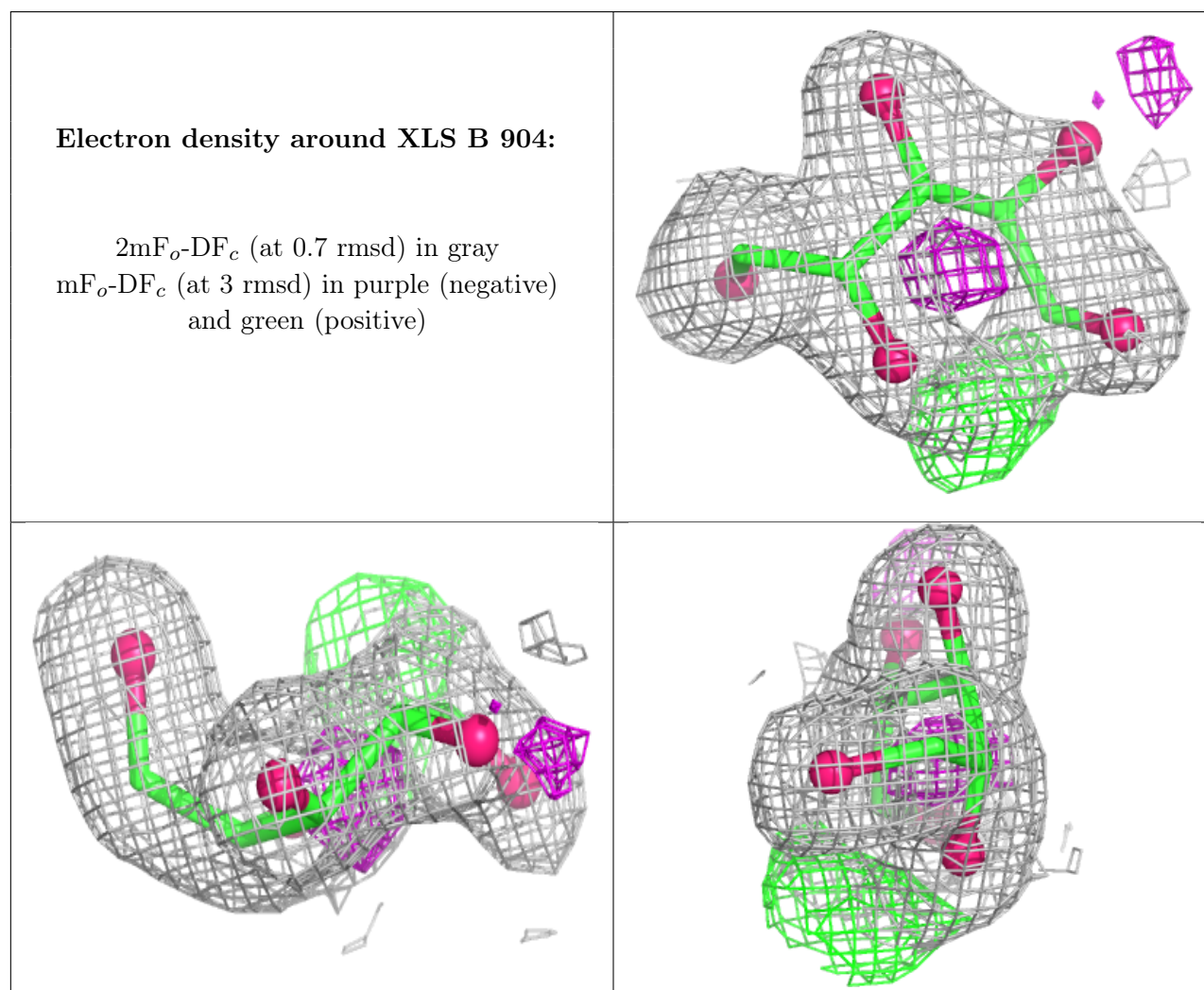
Mol	Type	Chain	Res	Atoms	RSCC	RSR	B-factors(Å ²)	Q<0.9
5	NAG	A	905	15/15	0.70	0.18	35,53,59,67	0
5	NAG	A	901	14/15	0.81	0.15	67,72,77,79	0
7	XLS	B	904	10/10	0.82	0.14	30,38,57,59	0
5	NAG	B	901	14/15	0.85	0.12	57,67,79,81	0
6	BKR	B	903	59/59	0.90	0.10	34,41,45,47	0
5	NAG	A	906	14/15	0.90	0.09	37,43,49,51	0

Continued on next page...

Continued from previous page...

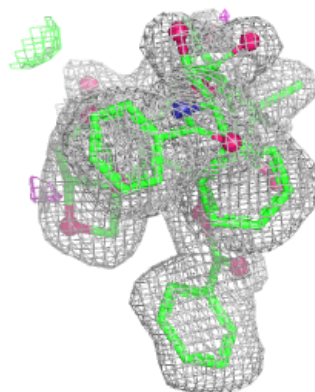
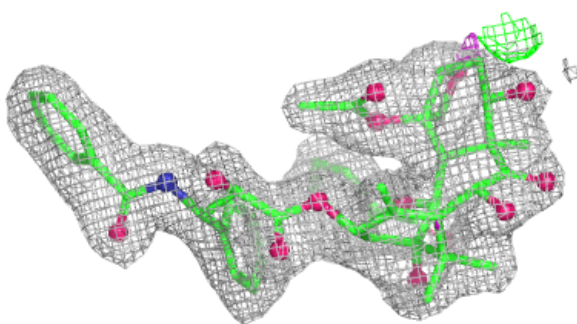
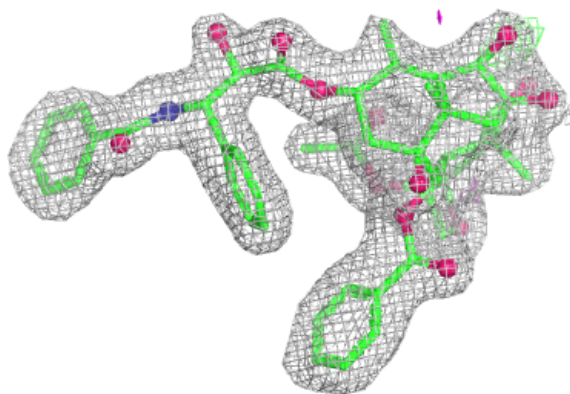
Mol	Type	Chain	Res	Atoms	RSCC	RSR	B-factors(\AA^2)	Q<0.9
6	BKR	A	903	59/59	0.91	0.10	32,40,44,48	0
7	XLS	A	904	10/10	0.92	0.09	29,35,49,49	0
5	NAG	B	902	14/15	0.93	0.07	38,41,45,49	0
5	NAG	A	902	14/15	0.94	0.07	33,37,43,44	0

The following is a graphical depiction of the model fit to experimental electron density of all instances of the Ligand of Interest. In addition, ligands with molecular weight > 250 and outliers as shown on the geometry validation Tables will also be included. Each fit is shown from different orientation to approximate a three-dimensional view.

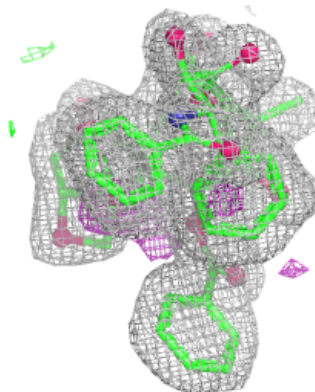
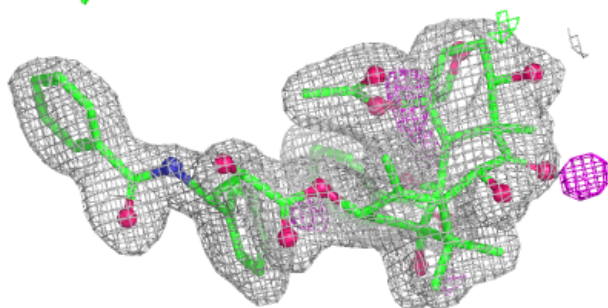
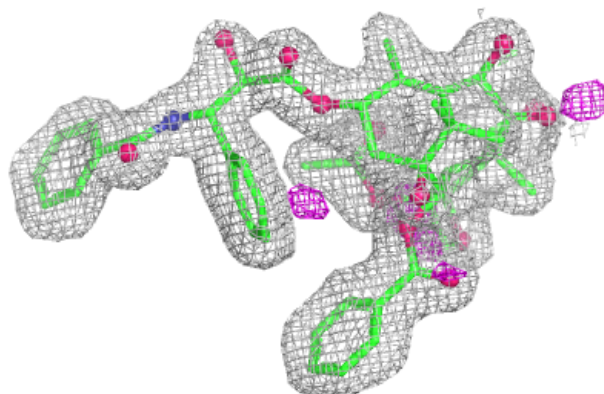


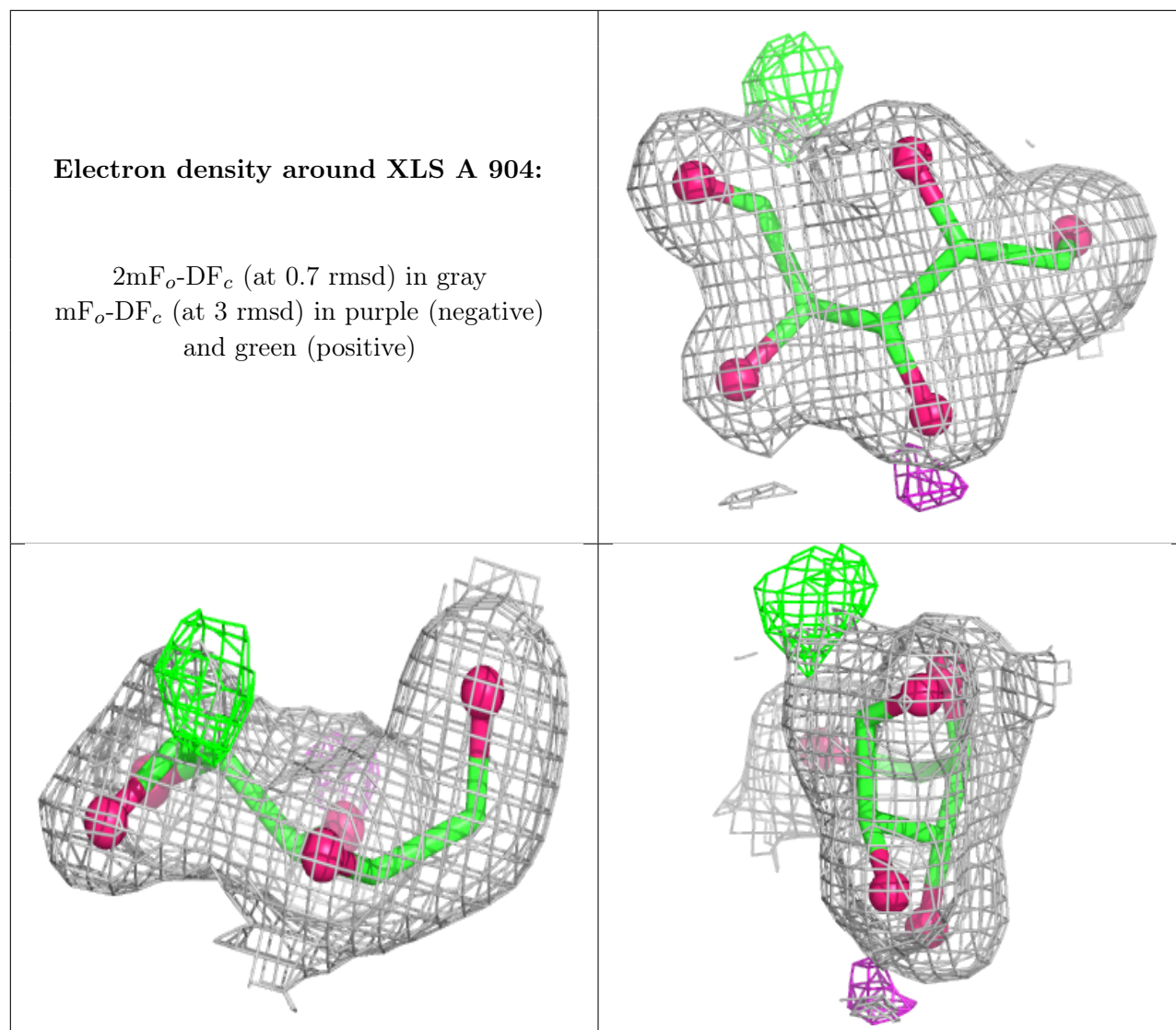
Electron density around BKR B 903:

$2mF_o-DF_c$ (at 0.7 rmsd) in gray
 mF_o-DF_c (at 3 rmsd) in purple (negative)
and green (positive)

**Electron density around BKR A 903:**

$2mF_o-DF_c$ (at 0.7 rmsd) in gray
 mF_o-DF_c (at 3 rmsd) in purple (negative)
and green (positive)





6.5 Other polymers [i](#)

There are no such residues in this entry.